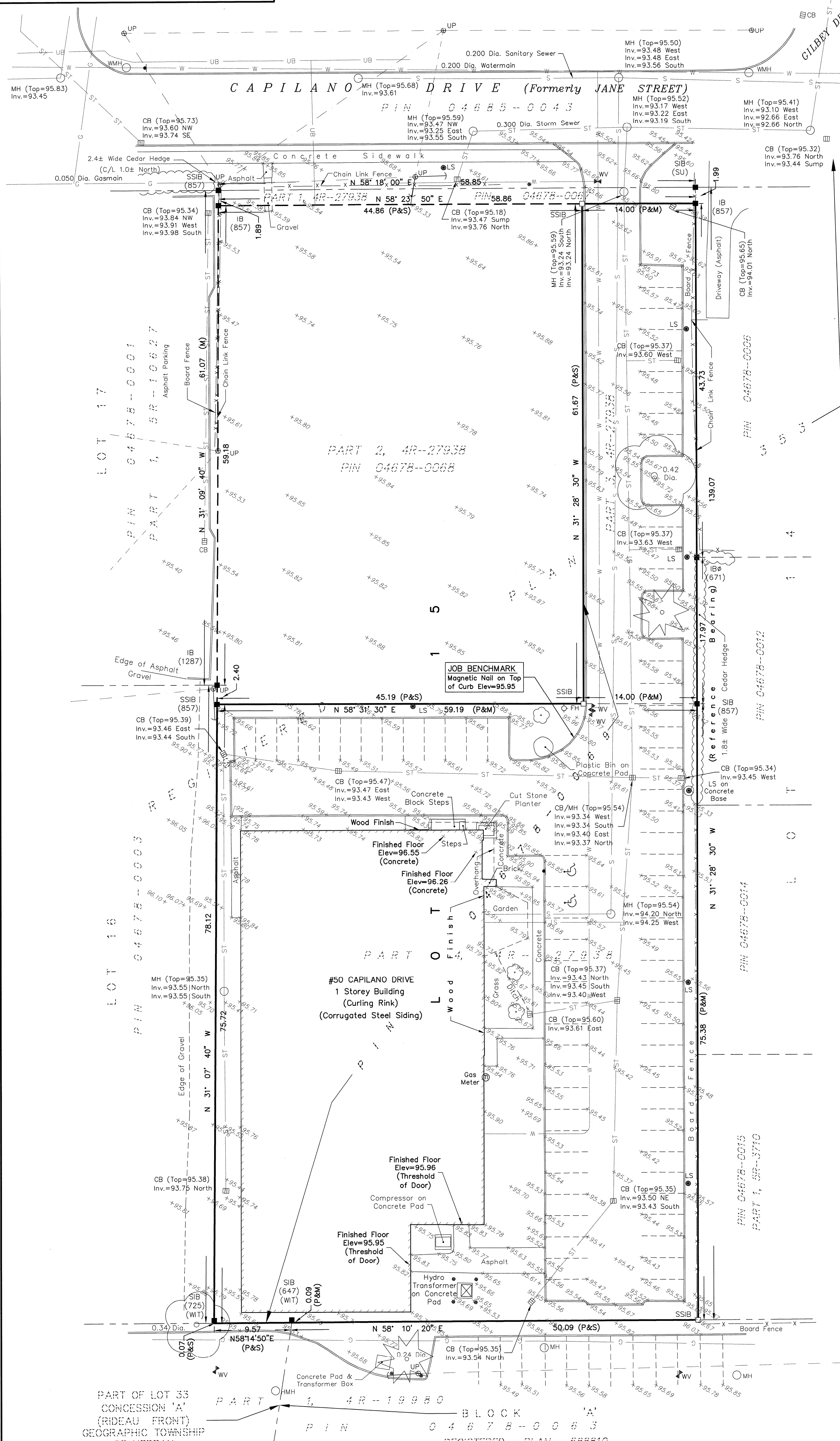


METRIC
DISTANCES AND ELEVATIONS SHOWN ON THIS PLAN ARE IN METRES
AND CAN BE CONVERTED TO FEET BY DIVIDING BY 0.3048



**TOPOGRAPHIC SURVEY OF
PART OF LOT 15
REGISTERED PLAN 353
CITY OF OTTAWA**

SCALE 1 : 300
0 5 10 20 30 metres

FAIRHALL, MOFFATT & WOODLAND LIMITED
ONTARIO LAND SURVEYORS

ELEVATION NOTES

- ELEVATIONS SHOWN HEREON ARE REFERRED TO GEODETIC DATUM.
- ELEVATIONS FOR MANHOLE COVERS AND CATCH BASINS HAVE TO BE INDEPENDENTLY CONFIRMED BEFORE THEY CAN BE ACCEPTED FOR FINAL DESIGN OR CONSTRUCTION PURPOSES.
- IT IS THE RESPONSIBILITY OF THE USER OF THIS INFORMATION TO VERIFY THAT THE JOB BENCHMARK HAS NOT BEEN ALTERED OR DISTURBED AND THAT ITS RELATIVE ELEVATION AND DESCRIPTION AGREE WITH THE INFORMATION SHOWN ON THIS DRAWING.

UTILITY NOTES

- THIS DRAWING CANNOT BE ACCEPTED AS ACKNOWLEDGING ALL OF THE UNDERGROUND UTILITIES AND IT WILL BE THE RESPONSIBILITY OF THE USER TO CONTACT THE RESPECTIVE UTILITY AUTHORITIES FOR CONFIRMATION OR LOCATION.
- UNDERGROUND UTILITIES, AS REPORTED ON THIS DRAWING, ARE NOT BASED ON AN ACTUAL 'FIELD LOCATE' BY THE RESPECTIVE UTILITY AGENCIES BUT HAVE BEEN COMPILED FROM DATA OBTAINED FROM THE FOLLOWING SOURCE:
 - CITY OF OTTAWA PUBLIC UTILITIES REGISTRY
 - TOPOGRAPHIC PLAN OF SURVEY BY FAIRHALL, MOFFATT & WOODLAND LIMITED, O.L.S. DATED MAY 18, 2012 (REF. 1 (a) -353 NP).
 - SITE SERVICING PLAN BY D. B. GRAY ENGINEERING INC. (REV.7 DEC 17-14).
- BEFORE ANY WORK INVOLVING PROBING, EXCAVATING, ETC., A FIELD LOCATION OF UNDERGROUND PLANT BY THE PERTINENT UTILITY AUTHORITY IS MANDATORY.

NOTE

BEARINGS HEREON ARE ASTRONOMIC AND ARE REFERRED TO THE EASTERLY LIMIT OF PARTS 3 & 4 AS SHOWN ON PLAN 4R-27938, HAVING A BEARING OF N 31° 28' 30" W.

LEGEND

□	- SURVEY MONUMENT SET	☼	- CONIFEROUS TREE
■	- SURVEY MONUMENT FOUND	☺	- DECIDUOUS TREE
SIB	- STANDARD IRON BAR	⊕	- HANDICAP
SSIB	- SHORT STANDARD IRON BAR	—W—	- WATERMAIN
IB	- IRON BAR	—U—	- OVERHEAD UTILITY WIRES
⊕	- ROUND	—UH—	- UNDERGROUND HYDRO
CP	- CONCRETE PIN	—UB—	- UNDERGROUND BELL
(P)	- PLAN 4R-27938	—G—	- GASMAIN
(M)	- MEASURED	—ST—	- STORM SEWER
(S)	- SET	—S—	- SANITARY SEWER
(671)	- F. H. GOOCH, O.L.S.	—C—	- CURB
(725)	- R. W. ARNETT, O.L.S.		
(857)	- FAIRHALL, MOFFATT & WOODLAND LIMITED, O.L.S. (REF. 1-353 NP)		
(1287)	- FARLEY, SMITH & MURRAY SURVEYING LTD., O.L.S.		
(MTO)	- MINISTRY OF TRANSPORTATION OF ONTARIO		
(SU)	- SOURCE UNKNOWN		
(WIT)	- WITNESS		
DIA.	- DIAMETER		
INV.	- INVERT		
PIN	- PROPERTY IDENTIFIER NUMBER		
NW	- NORTHWEST		
NE	- NORTHEAST		
CB	- CATCH BASIN		
MH	- MANHOLE		
WMH	- WATER MANHOLE		
HMH	- HYDRO MANHOLE		
LS	- LAMP STANDARD		
UP	- UTILITY POLE		
WV	- WATER VALVE		
—	- GUY WIRE AND ANCHOR		
•	- BOLLARD		
▲	- SIGN		

SURVEYOR'S CERTIFICATE

I CERTIFY THAT:
1. THIS SURVEY AND PLAN ARE CORRECT AND IN ACCORDANCE WITH THE SURVEYS ACT, THE SURVEYORS ACT, THE LAND TITLES ACT AND THE REGULATIONS MADE UNDER THEM.
2. THE SURVEY WAS COMPLETED ON JULY 21, 2016.

2016/07/21
DATE
JOHN H. GUTRI
ONTARIO LAND SURVEYOR

ASSOCIATION OF ONTARIO
LAND SURVEYORS
PLAN SUBMISSION FORM
1985862

THIS PLAN IS NOT VALID
UNLESS IT IS AN EMBOSSED
ORIGINAL COPY
ISSUED BY THE SURVEYOR
in accordance with
Regulation 1026, Section 29 (3).

**Fairhall
Moffatt &
Woodland**
L I M I T E D
ONTARIO LAND SURVEYORS
O T T A W A

Surveying and Land Information Services
100-600 TERRY FOX DRIVE, KANATA, ONTARIO K2L 4B6
TEL: (613) 591-2580 FAX: (613) 591-1495
www.fmw.on.ca

JOB No.	V 2 2 2 0 0
E	364815, N 5024269
REFERENCE No.	1 (c) - 353 NP
S:\JBS\22200\DWGS 2016-07-21	TP222V.DWG (nj)