

- CONNECT TO EXISTING WATERMAIN (CITY FORCES)
- ROAD CUT TO BE REINSTATED AS PER DETAIL R-10
- REMOVE AND REPLACE EXISTING CONCRETE SIDEWALK AND CURB
- REMOVE AND REPLACE EXISTING CONCRETE ISLAND AND CURB
- ROAD CUT TO BE REINSTATED AS PER DETAIL R-10
- WM CROSSING (TYP) TO BE PER WS25.2 C/W 45° VERT. BENDS PROVIDE 75mm HI-40 INSULATION TOP OF WATERMAIN 61.75
- CONNECT TO EXISTING WATERMAIN (CITY FORCES)
- REMOVE AND REPLACE EXISTING CONCRETE SIDEWALK AND CURB

CLIENT

MAGIL LAURENTIENNE
 ML Wellington Realty Investments Inc.
 C/O ML DEVCO INC
 651, Church Avenue N
 Ottawa (Ontario) K1Z 5G2
 Tel: 613-686-6319

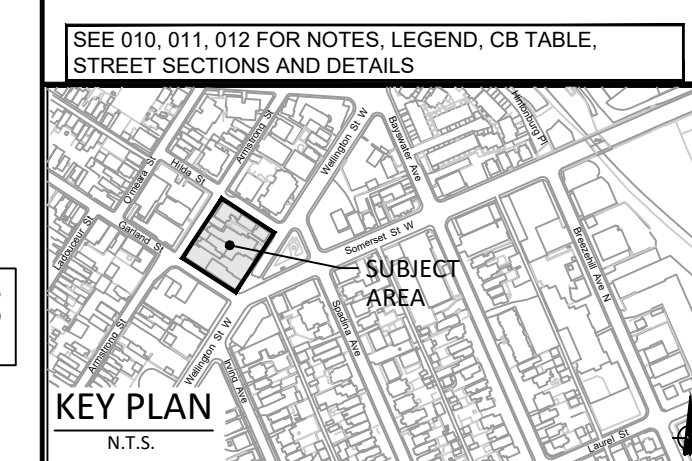
COPYRIGHT

This drawing has been prepared solely for the intended use. Any reproduction or distribution for any purpose other than that authorized by IBI Group is forbidden. Written dimensions shall have precedence over scaled dimensions. Contractors shall verify and be responsible for all dimensions and conditions on the job, and IBI Group shall be relieved of any liability from the dimensions and conditions shown on the drawing. Shop drawings shall be submitted to IBI Group for general conference before proceeding with fabrication.

IBI Group Professional Services (Canada) Inc.
 is a member of the IBI Group of companies

ISSUES

No.	DESCRIPTION	DATE
1	ISSUED FOR COORDINATION	2022-01-28
2	ISSUED FOR PERMITS	2022-09-16
3	REVISED AS PER CITY COMMENTS	2022-11-28
4	REVISED PER CLIENT COMMENTS	2022-11-29
5	ISSUED FOR TENDER	2023-02-24



CONSULTANTS

Site Planner
FOTENN CONSULTANTS INC.
 396 Cooper Street, Suite 300
 Ottawa, Ontario, K2P 2H7
 T: 613 730 5709
 F: 613 730 1195
 E: nbsche@fotenn.com

Geotechnical Engineer
PATERSON GROUP
 154 Colborne Road South
 Ottawa, Ontario, K2E 7J5
 T: 613 226 7381
 E: info@patersongroup.ca

Transportation Engineer
CGH TRANSPORTATION INC.
 13 Marlborough Avenue
 Ottawa, Ontario, K2G 3Z1
 T: 343 999 8177
 E: info@cgtransportation.com

Structural Engineer
88 GROUP
 333 Preston Street, Suite 400
 Ottawa, Ontario, K1S 9N4
 T: 613 225 1311
 F: 613 225 9868
 E: info@88group.com

Architecture
RODERICK LAHEY ARCHITECTS
 58 Beech Street
 Ottawa, Ontario, K1S 3J6
 T: 613 724 9932
 E: edwin@rlaheyarchitecture.ca

Surveyors
ANNE O'SULLIVAN VOLLEBEK LTD.
 Ontario Land Surveyors
 14 Concourse Gate, Suite 500,
 Nepean, Ontario, K2E 7S0
 T: 613 727 0850
 F: 613 727 0779
 E: edp@ovktd.com

SEAL

J. I. MOFFATT
 2023/02/24
 PROVINCE OF ONTARIO

IBI GROUP
 400 - 333 Preston Street
 Ottawa ON K1S 9M4 Canada
 tel 613 225 1311 fax 613 225 9868
 ibigroup.com

PROJECT
 979, WELLINGTON

PROJECT NO:
126031

DRAWN BY:
J.B./D.P.S.

CHECKED BY:
J.I.M.

PROJECT MGR:
J.I.M.

APPROVED BY:
J.B.

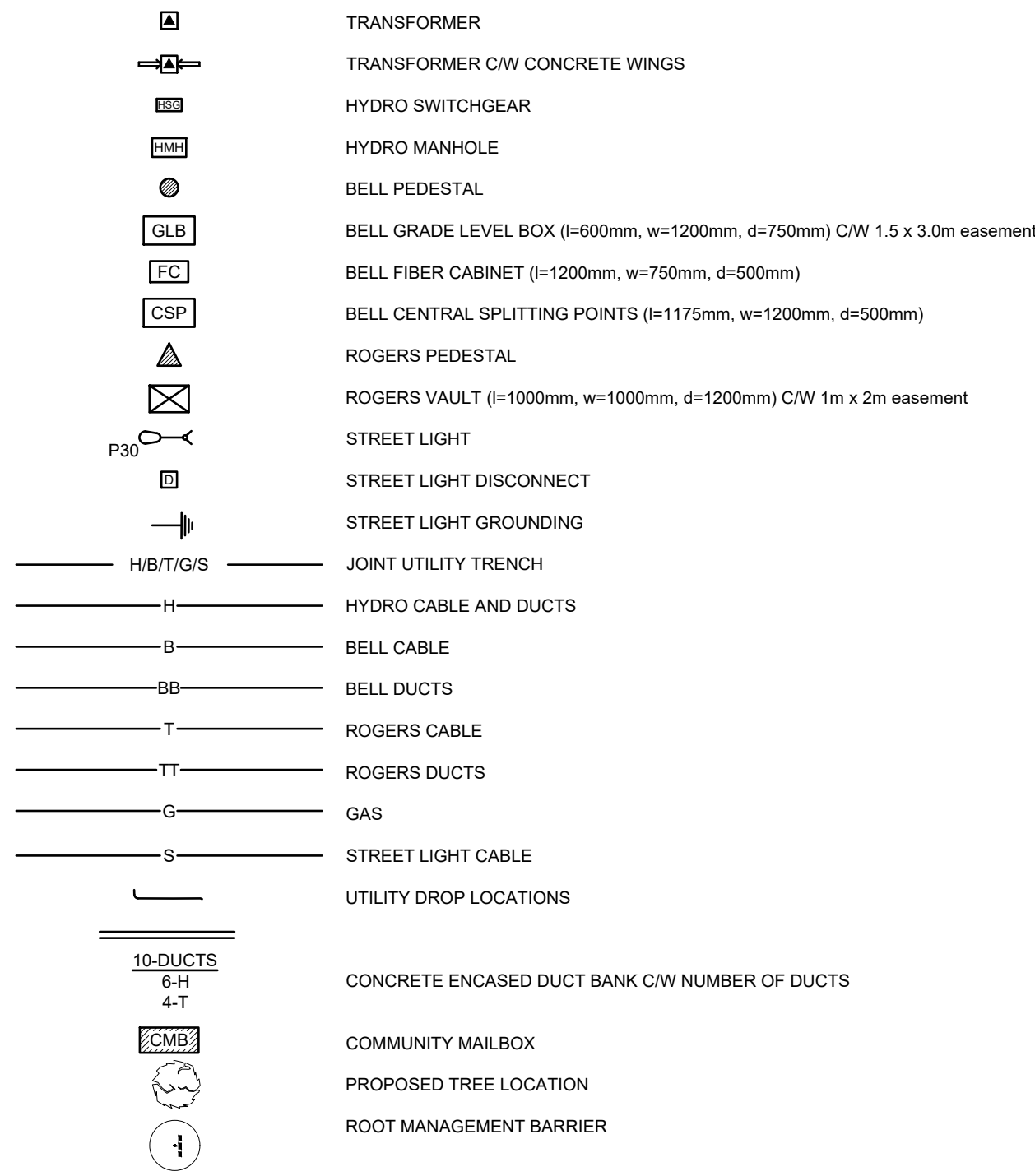
SHEET TITLE
 SITE SERVICING PLAN

SHEET NUMBER
 C-001

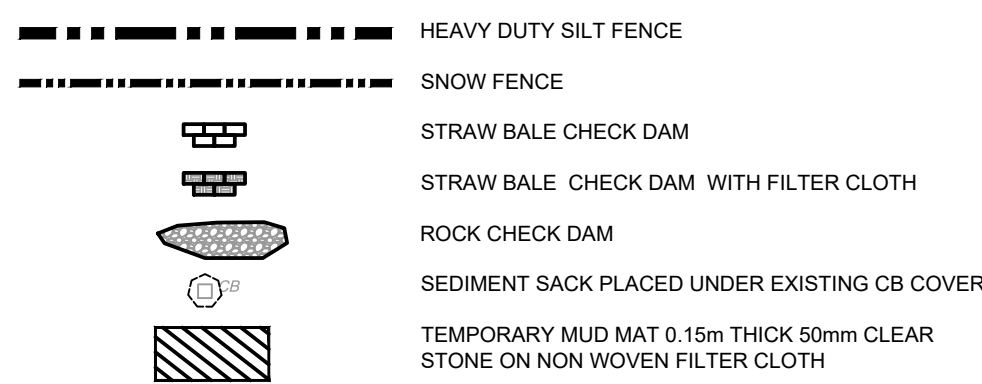
ISSUE
 5

File Location: \\128031_979Wellington\0_Production\03_Design\04_Civil\Sheets\C-001-SITE PLAN.dwg Last Saved: February 23, 2023, by: stefan.gaiser Plotted: Thursday, February 23, 2023, 12:55:40 PM by: Stefan Gaiser
 SCALE CHECK CITY FILE No. D07-12-21-0228

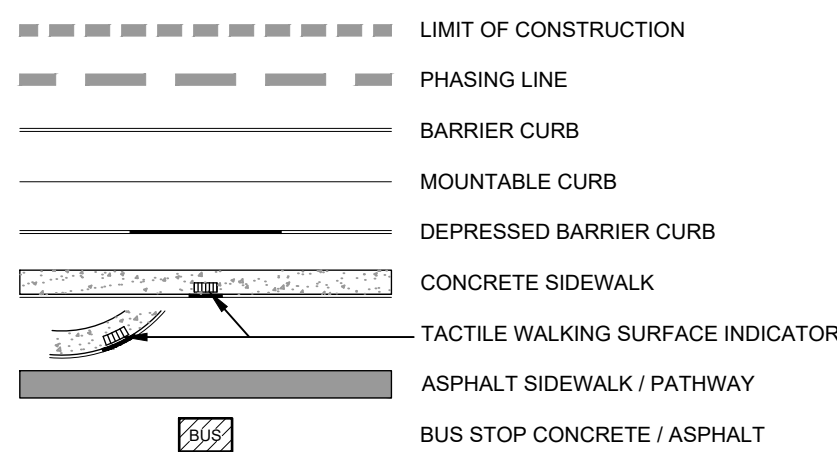
UTILITY LEGEND



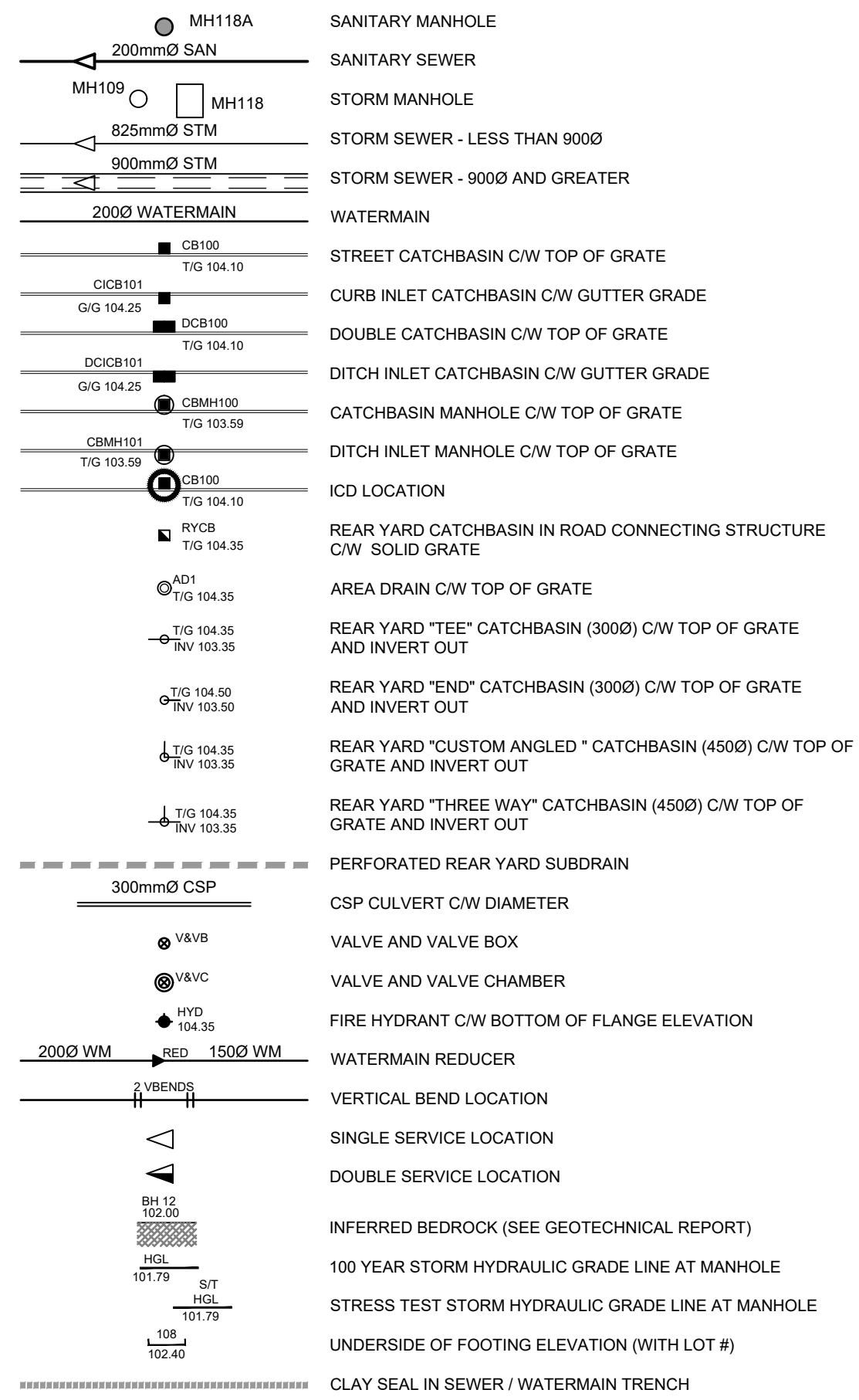
SEDIMENT EROSION LEGEND



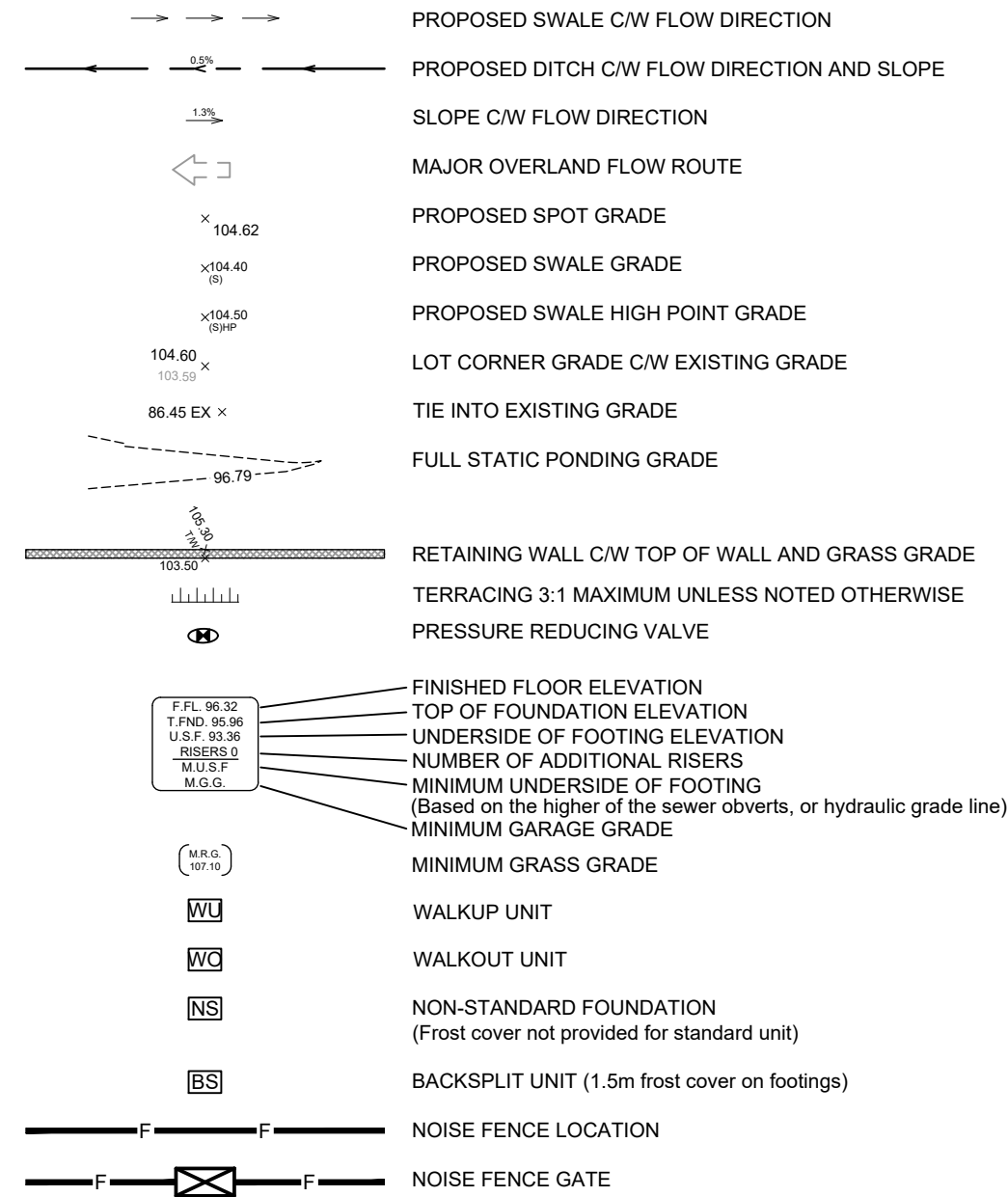
GENERAL LEGEND



SERVICING LEGEND



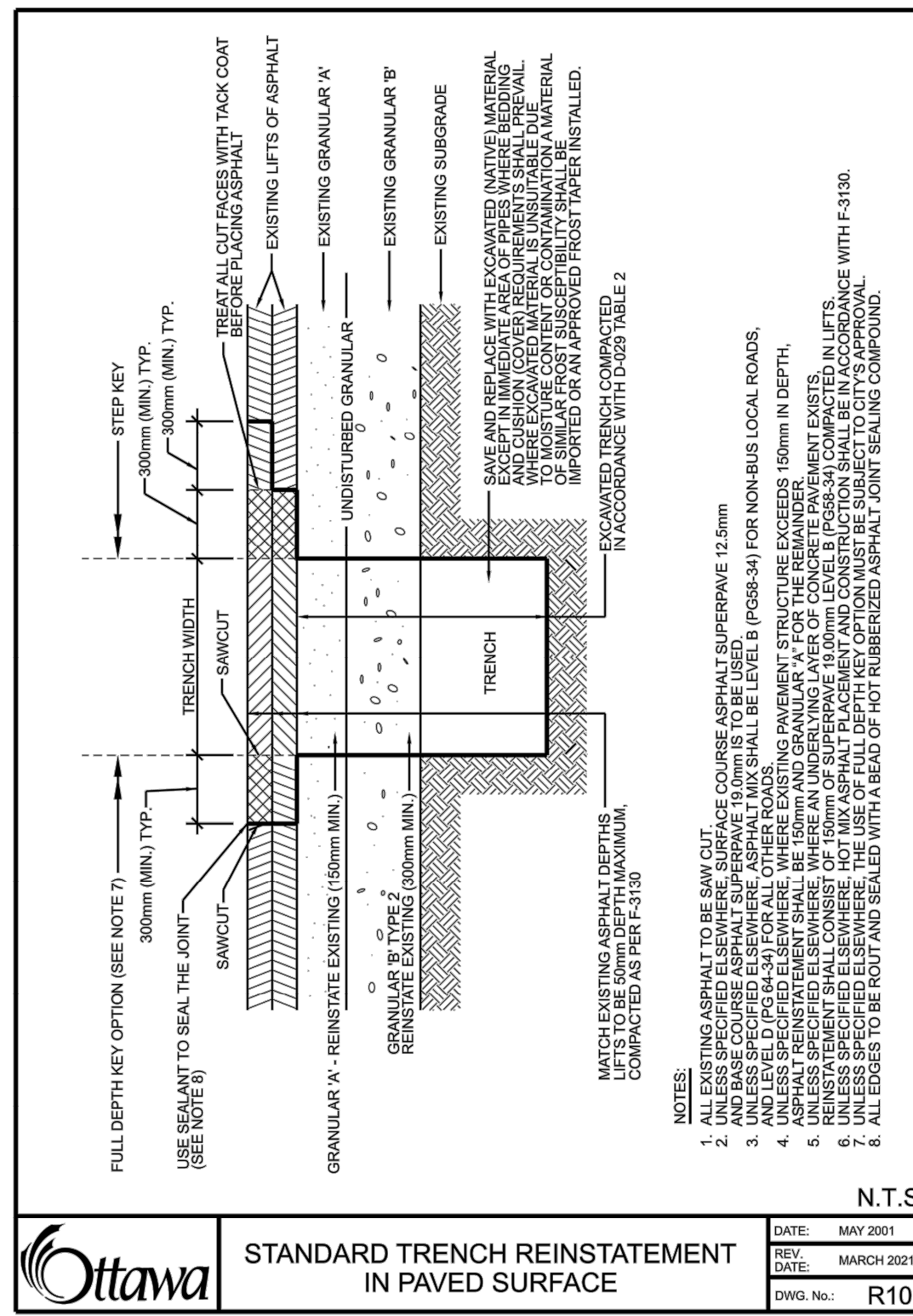
GRADING LEGEND



NOTES :

- ALL MATERIALS AND CONSTRUCTION IS TO BE IN ACCORDANCE WITH THE CURRENT CITY OF OTTAWA STANDARD DRAWINGS & SPECIFICATIONS OR OPSD/OPSS IF CITY DRAWINGS AND SPECIFICATIONS DO NOT APPLY.
- THE CONTRACTOR IS RESPONSIBLE FOR DETERMINING THE EXACT LOCATION, SIZE, MATERIAL AND ELEVATION OF ALL EXISTING SERVICES AND UTILITIES PRIOR TO CONSTRUCTION AND SHALL PROTECT AND ASSUME RESPONSIBILITY FOR ALL UTILITIES WHETHER OR NOT SHOWN ON THESE DRAWINGS.
- ROADWAY SECTIONS REQUIRING GRADE RAISE TO PROPOSED SUB GRADE LEVEL TO BE FILLED WITH ACCEPTABLE NATIVE EARTH BORROW OR IMPORTED OPSS SELECTED SUBGRADE MATERIAL IF NATIVE MATERIAL IS DEFICIENT AS PER RECOMMENDATION OF GEOTECHNICAL ENGINEER.
- IN AREAS WHERE EXISTING GROUND IS BELOW THE PROPOSED ELEVATION OF SEWER AND WATERMANS, GRADE RAISING AND FILLING IS TO BE IN ACCORDANCE WITH THE RECOMMENDATIONS OF THE GEOTECHNICAL REPORT. AS PER CITY GUIDELINES ALL WATERMANS IN FILL AREAS ARE TO BE TIED WITH RESTRAINING JOINTS AND THRUST BLOCKS.
- CONTRACTORS SHALL BE RESPONSIBLE FOR KEEPING CLEAN ALL ROADS WHICH BECOME COVERED IN DUST, DEBRIS AND/OR MUD AS A RESULT OF ITS CONSTRUCTION OPERATIONS.
- SILT FENCE TO BE ERRECTED PRIOR TO EARTH WORKS BEING COMMENCED. SILT FENCE TO BE MAINTAINED UNTIL VEGETATION IS ESTABLISHED OR UNTIL START OF SUBSEQUENT PHASE.
- STRAW BALE SEDIMENT TRAPS TO BE PLACED AND MAINTAINED IN EXISTING AND CONSTRUCTED ROADSIDE DITCHES. TRAPS TO REMAIN AND BE MAINTAINED UNTIL VEGETATION IS ESTABLISHED (IF APPLICABLE).
- SILT SACK TO BE PLACED AND MAINTAINED UNDER COVER OF ALL CATCHBASINS. GEOTEXTILE FABRIC IN RVCBs TO REMAIN UNTIL VEGETATION IS ESTABLISHED. ALL CATCHBASINS TO BE REGULARLY INSPECTED AND CLEANED, AS NECESSARY, UNTIL SOD AND CURBS ARE CONSTRUCTED.
- ALL CONNECTIONS TO EXISTING WATERMANS ARE TO BE COMPLETED BY CITY FORCES. CONTRACTOR IS TO EXCAVATE, BACKFILL, COMPACT AND REINSTATE.
- ANY WATERMAIN WITH LESS THAN 2.4M DEPTH OF COVER REQUIRES THERMAL INSULATION AS PER CITY OF OTTAWA STANDARD W22, OR AS APPROVED BY THE ENGINEER.
- ALL LEADS FOR STREET CBs TO AND ICBs CONNECTED TO MAIN SHALL BE 200mmØ PVC DR35 @ MIN 2% SLOPE UNLESS NOTED OTHERWISE. ALL LEADS FOR RVCBs CONNECTED TO MAIN SHALL BE 200mmØ PVC DR35 @ MIN 1% SLOPE UNLESS NOTED OTHERWISE.
- EACH BUILDING SHALL BE EQUIPPED WITH A SANITARY AND STORM SEWER BACKWATER VALVE AS PER CITY STDS S14, S14.1 OR S14.2.
- THESE DRAWINGS ARE NOT TO BE SCALED OR USED FOR LAYOUT PURPOSES.
- THE COMPOSITE UTILITY PLAN HAS BEEN REVIEWED BY IBI GROUP FOR CONFORMITY TO THE DESIGN CONCEPT FOR THE DEVELOPMENT AND FOR GENERAL ARRANGEMENT ONLY AND AS SUCH SHALL NOT RELIEVE THE CONTRACTOR OF RESPONSIBILITY FOR ERRORS OR OMISSIONS IN EITHER LAYOUT OR WORKMANSHIP.
- ALL UTILITY BOXES (I.E. PEDESTALS, TRANSFORMERS, ETC) ARE TO BE INSTALLED IN ACCORDANCE WITH THE LATEST EDITION OF THE CITY OF OTTAWA'S "GUIDELINES FOR UTILITY PEDESTALS WITHIN THE ROAD RIGHT OF WAY".
- THIS DRAWING IS A COMPILED OF OTHER UTILITY DESIGNS AND DOES NOT INDICATE IN ANY WAY THAT THE PARTY SIGNING THIS DRAWING HAS DESIGNED OR APPROVED THE RESPECTIVE UTILITY PLANTS INDICATED ON THIS DRAWING. THE DRAWING WAS PREPARED TO BE USED AS REFERENCE ONLY AS PER REQUIREMENTS OF THE CITY OF OTTAWA. IT IS THE CONTRACTORS RESPONSIBILITY TO ENSURE IT HAS REVIEWED THE CURRENT AND EXISTING DESIGNS BY HYDRO, STREET LIGHTING, BELL, CANADA POST, O.C. TRANSP. CABLE TV AND ANY OTHER PARTIES INCLUDED BUT NOT MENTIONED AND COMPLETE THE INSTALLATION IN ACCORDANCE WITH THE REQUIREMENTS OF THE STAKEHOLDER UTILITY DESIGNS.
- CONTRACTOR TO REVIEW AND FOLLOW ALL RELEVANT CITY STANDARD DRAWINGS DURING CONSTRUCTION.
- OBTAIN ALL NECESSARY PERMITS AND APPROVAL FROM CITY OF OTTAWA BEFORE COMMENCING WORK.
- THERMAL INSULATION TO BE PROVIDED FOR WATER SERVICES LESS THAN 2.4m FROM OPEN STRUCTURES PER CITY OF OTTAWA STD W23.
- WATER SERVICE TO HAVE MORE THAN 2.4M OF COVER OR BE INSULATED PER CITY OF OTTAWA STD W22.
- ALL SANITARY SEWER MAINS TO BE CSA CERTIFIED, BELL AND SPIGOT TYPE. ONLY FACTORY FITTINGS TO BE USED. SEWER TO BE INSTALLED AS PER OPSD 1005.01. SANITARY SEWER MATERIALS TO BE: 200mmØ - PVC DR 35
- ALL STORM SEWER MAINS TO BE CSA CERTIFIED, BELL AND SPIGOT TYPE. ONLY FACTORY FITTINGS TO BE USED. SEWER TO BE INSTALLED AS PER OPSD 1005.01. STORM SEWER MATERIALS TO BE: 450mmØ AND SMALLER - PVC DR 35
- ALL WATERMANS TO BE PVC DR 18, WITH MINIMUM COVER OF 2.4m AND INSTALLED PER CITY OF OTTAWA STANDARDS. ALL DOMESTIC WATER SERVICES ARE TO BE 200mmØ.

CROSSING SCHEDULE	
1	200mmØ WATERMAIN OVER 1200mmØ SANITARY SEWER - CLEARANCE 0.25m (INSULATION REQUIRED)
2	200mmØ WATERMAIN OVER 675mmØ S/STORM SEWER - CLEARANCE 0.40m
3	200mmØ SANITARY SEWER UNDER 675mmØ STORM SEWER - CLEARANCE 0.25m
4	200mmØ SANITARY SEWER UNDER 300mmØ STORM SEWER - CLEARANCE 0.40m



	STANDARD TRENCH REINSTATEMENT IN PAVED SURFACE	N.T.S.
	DATE: MAY 2021	
	REV: MARCH 2021	
	DWG. No.: R10	

CLIENT

MAGIL LAURENTIENNE
ML Wellington Realty Investments Inc.
C/O ML DEVCO INC.
651, Churchill Avenue N.
Ottawa (Ontario) K1Z 5G2
Tel: 613-686-6319

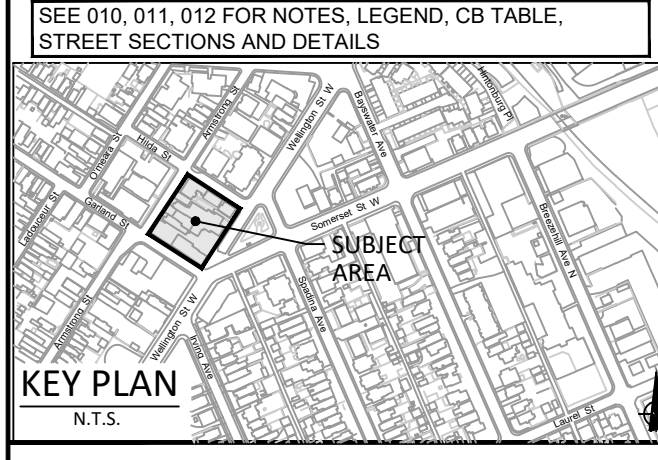
COPYRIGHT

This drawing has been prepared solely for the intended use. Any reproduction or distribution for any purpose other than authorized by IBI Group is forbidden. Written dimensions shall have precedence over scaled dimensions. Contractors shall verify and be responsible for all dimensions and conditions on the job, and IBI Group shall be informed of any variations from the dimensions and conditions shown on the drawing. Shop drawings shall be submitted to IBI Group for general confirmation before proceeding with fabrication.

IBI Group Professional Services (Canada) Inc.
is a member of the IBI Group of companies.

ISSUES

No.	DESCRIPTION	DATE
1	ISSUED FOR COORDINATION	2022-01-28
2	ISSUED FOR PERMITS	2022-09-16
3	REVISED AS PER CITY COMMENTS	2022-11-28
4	ISSUED FOR TENDER	2023-02-24
5		



CONSULTANTS

Geotechnical Engineer
FOITEN CONSULTANTS INC.
286 Cooper Street, Suite 300
Ottawa, Ontario, K2P 2V7
T: 613 730 5709
F: 613 730 1136
E: ntsche@foiten.com

Structural Engineer
PATERSON GROUP
154 Colborne Road South
Ottawa, Ontario, K2E 7J5
T: 613 226 7381
E: mferny@patergroup.com

Transportation Engineer
TRANSPORTECH ENGINEERING
113 Marlborough Avenue
Ottawa, Ontario, K2G 3Z1
T: 343 999 6117
E: chris@transportech.com

CGH TRANSPORTATION INC.
333 Preston Street, Suite 400
Ottawa, Ontario, K1S 0K4
T: 613 226 1311
F: 613 226 8868
E: jprof@cggroup.com

Architect
RODERICK LAHEY ARCHITECTS
56 Beech Street
Ottawa, Ontario, K1S 3J6
T: 613 724 9932
E: adam@rodericklahey.com

Structural
ANNE'S O'SULLIVAN VOLLEBEK LTD.
Ontario Land Surveyors
14 Concourse Gate, Suite 500,
Nepean, Ontario, K2E 7S6
T: 613 727 0850
F: 613 727 0779
E: edh@ovkl.com

SEAL

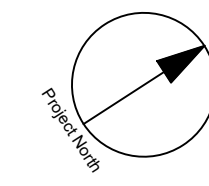
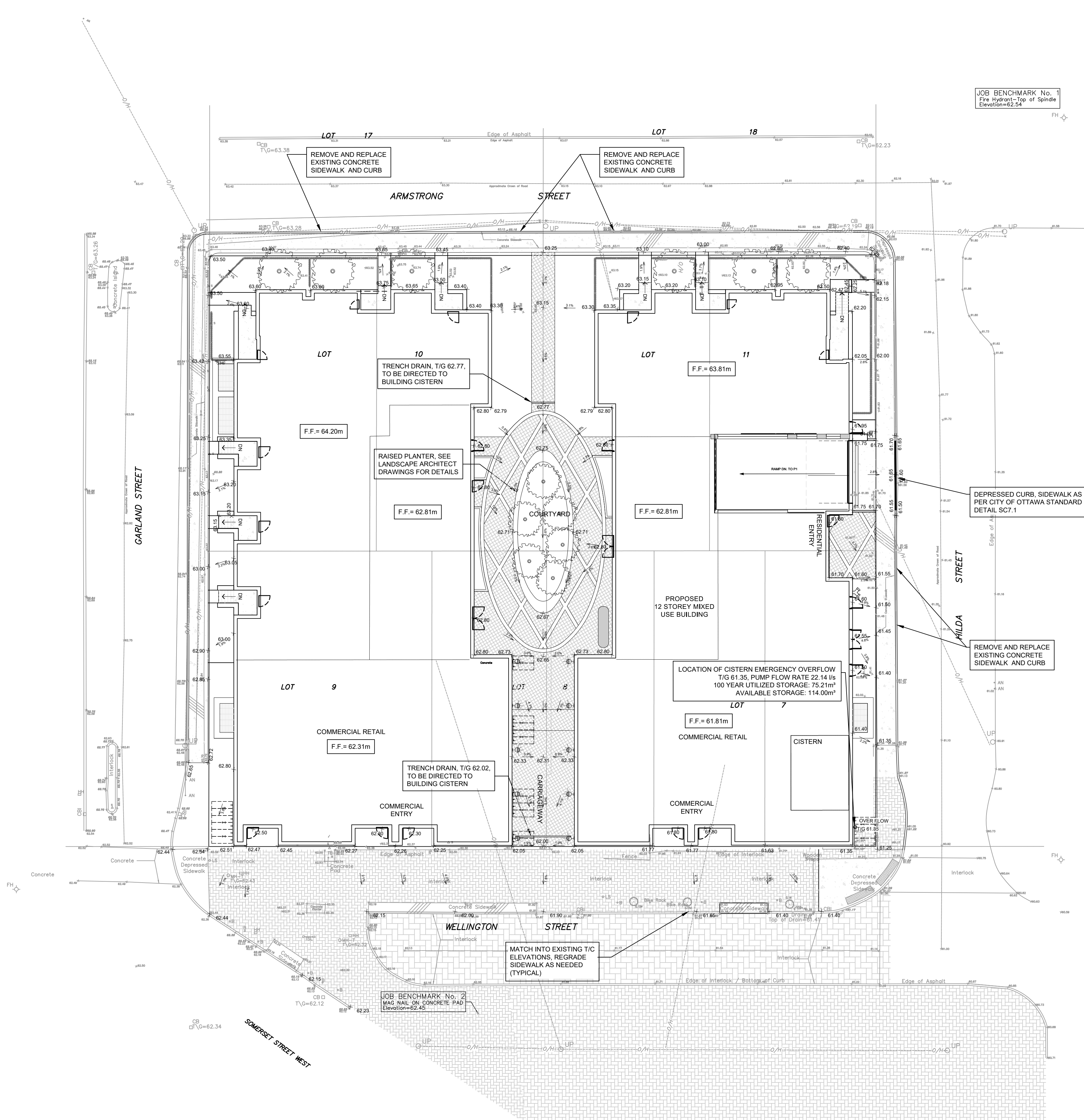
IBI GROUP
400 - 333 Preston Street
Ottawa ON K1S 5M4 Canada
tel 613 225 1311 fax 613 225 9868
ibigroup.com

PROJECT
979, WELLINGTON

PROJECT NO: 126031	CHECKED BY: S.E.L.
DRAWN BY: D.P.S.	APPROVED BY: J.I.M.
PROJECT MGR: J.I.M.	

SHEET TITLE
GENERAL NOTES, AND LEGEND

SHEET NUMBER C-010	ISSUE 5
------------------------------	-------------------



JOB BENCHMARK No. 1
 Iron Nail on Concrete Pad
 Elevation=62.54

JOB BENCHMARK No. 2
 MAG NAIL ON CONCRETE PAD
 Elevation=62.45

CLIENT

MAGIL LAURENTIENNE
 M.L. Wellington Realty Investments Inc.
 C/O ML DEVCO INC.
 651, Churchill Avenue N
 Ottawa (Ontario) K1Z 5G2
 Tel: 613-686-6319

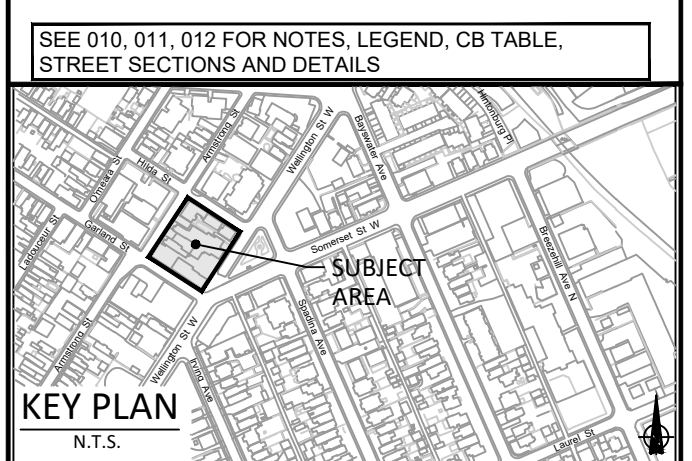
COPYRIGHT

This drawing has been prepared solely for the intended use. Any reproduction or distribution for any purpose other than authorized by IBI Group is forbidden. Written dimensions shall have precedence over scaled dimensions. Contractors shall verify and be responsible for all dimensions and conditions on the job, and IBI Group shall be informed of any variations from the dimensions and conditions shown on the drawing. Shop drawings shall be submitted to IBI Group for general concurrence before proceeding with fabrication.

IBI Group Professional Services (Canada) Inc.
 is a member of the IBI Group of companies

ISSUES

No.	DESCRIPTION	DATE
1	ISSUED FOR COORDINATION	2022-01-28
2	ISSUED FOR PERMITS	2022-09-16
3	REVISED AS PER CITY COMMENTS	2022-11-28
4	ISSUED FOR TENDER	2023-02-24
5		



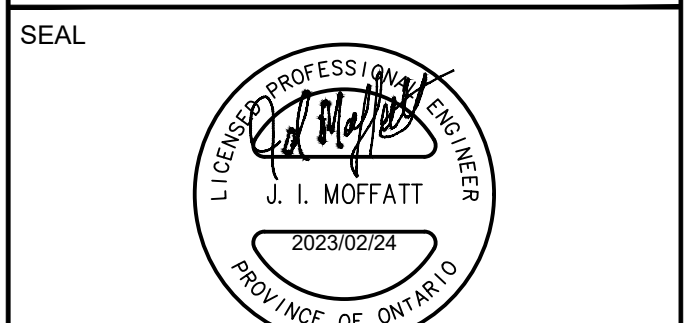
CONSULTANTS

Geotechnical Engineer
PATERSON GROUP
 286 Cooper Street, Suite 300
 Ottawa, Ontario, K2P 2V7
 T: 613 730 5709
 F: 613 730 1136
 E: mbsche@paterson.com

Transportation Engineer
COH TRANSPORTATION INC.
 13 Marlborough Avenue
 Ottawa, Ontario, K2G 3Z1
 T: 343 999 9117
 E: cohes@cohtransportation.com

Architecture
RODERICK LAHEY ARCHITECTS
 56 Beech Street
 Ottawa, Ontario, K1S 3J6
 T: 613 724 9932
 E: adam@rodericklahey.com

Structural
ANNE'S COLLAMAN VOLLEBEK LTD.
 Ontario Land Surveyors
 14 Concourse Gate, Suite 500
 Nepean, Ontario, K2E 7S6
 T: 613 727 0850
 F: 613 727 0779
 E: edh@avkl.com



SCALE

1:200

IBI GROUP
 400 - 333 Preston Street
 Ottawa ON K1S 5M4 Canada
 tel 613 225 1311 fax 613 225 5866
 ibigroup.com

PROJECT

979, WELLINGTON

PROJECT NO:
126031

DRAWN BY:
J.B./D.P.S.

CHECKED BY:
J.B.

PROJECT MGR:
J.I.M.

APPROVED BY:
J.I.M.

SHEET TITLE

SITE GRADING PLAN

SHEET NUMBER

C-200

ISSUE

5

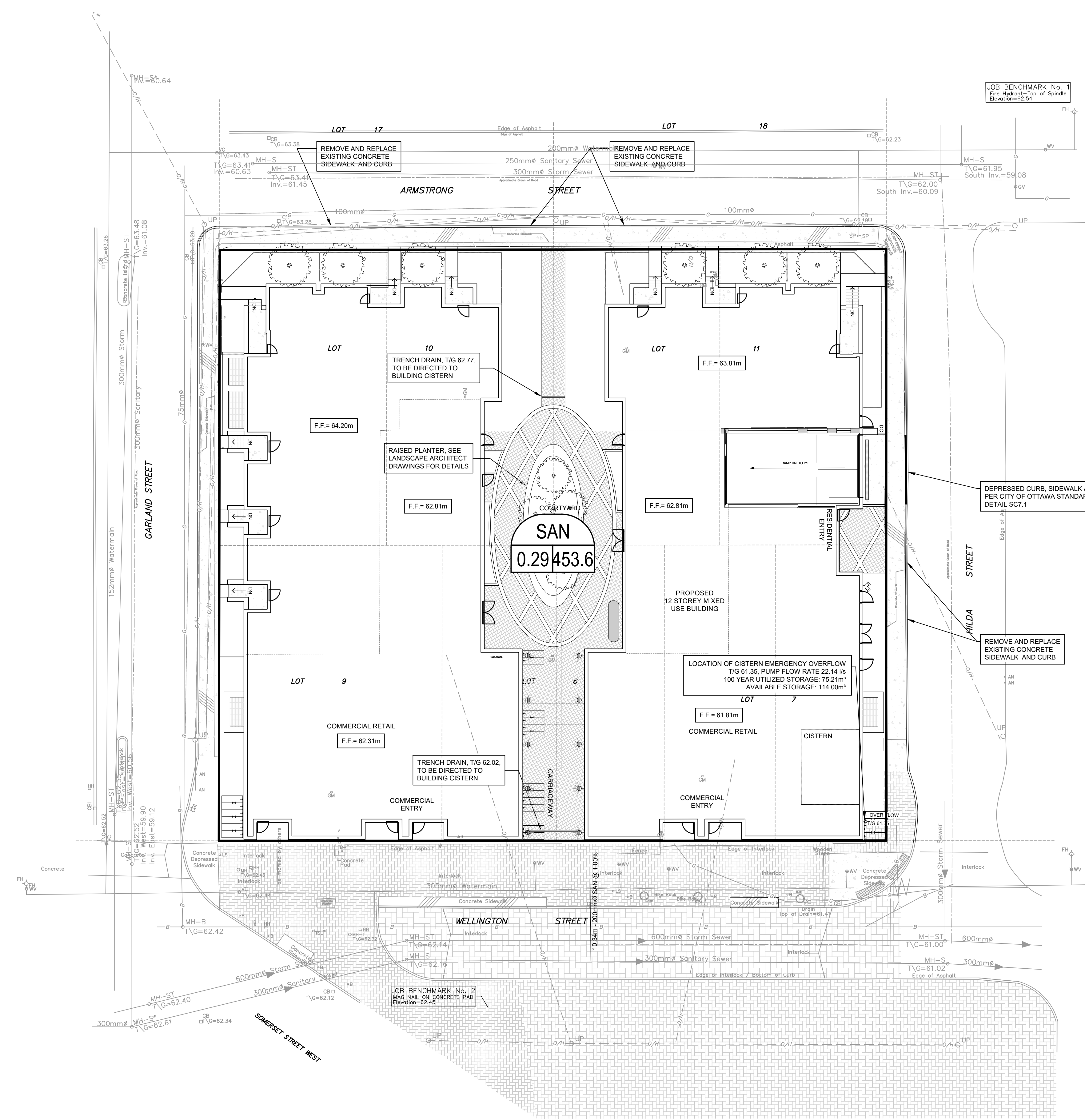
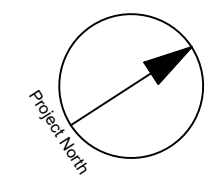
CITY PLAN No. xxxxx

File Location: \\128031_979Wellington\0_Production\03_Design\04_Civil\Sheets\C-200 SITE GRADING PLAN.dwg Last Saved: February 21, 2023, by stefan.geisser
 Printed: Thursday, February 23, 2023, 12:46:11 PM by Stefan Geisser
 SCALE CHECK
 CITY FILE No. D07-12-21-0228

LEGEND :

A AREA NUMBER
0.55 0.90 POPULATION
 AREA IN HECTARES

— DRAINAGE AREA LIMITS



CLIENT

MAGIL LAURENTIENNE
 ML Wellington Realty Investments Inc.
 C/O ML DEVCO INC
 651, Church Avenue N
 Ottawa (Ontario) K1Z 5G2
 Tel: 613-686-6319

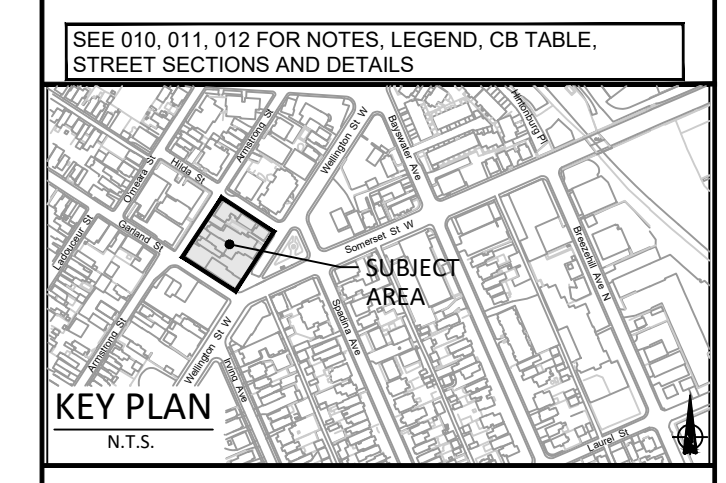
COPYRIGHT

This drawing has been prepared solely for the intended use, thus any reproduction or distribution for any purpose other than that authorized by IBI Group is forbidden. Written dimensions shall have precedence over scaled dimensions. Contractors shall verify and be responsible for all dimensions and conditions on the job, and IBI Group shall be informed of any variations from the dimensions and conditions shown on the drawing. Shop drawings shall be submitted to IBI Group for general conformance before proceeding with fabrication.

IBI Group Professional Services (Canada) Inc.
 is a member of the IBI Group of companies.

ISSUES

No.	DESCRIPTION	DATE
1	ISSUED FOR COORDINATION	2023-01-28
2	ISSUED FOR PERMITS	2023-09-16
3	REVISED AS PER CITY COMMENTS	2023-11-28
4	ISSUED FOR TENDER	2023-02-24
5		



CONSULTANTS

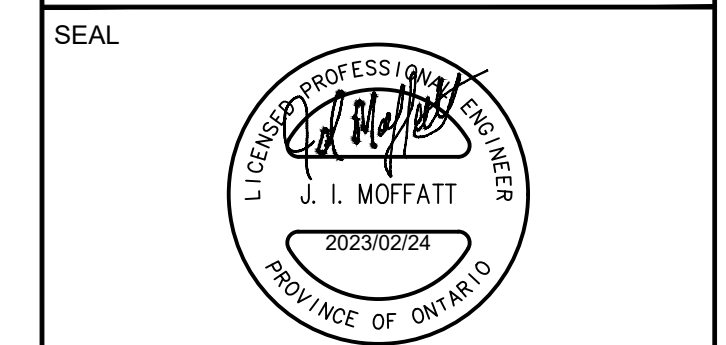
FORTE CONSULTANTS INC.
 286 Cooper Street, Suite 300
 Ottawa, Ontario, K2P 2V7
 T: 613 730 5709
 F: 613 730 1136
 E: info@fortecan.com

Geotechnical Engineer
PATERSON GROUP
 154 Colborne Road South
 Ottawa, Ontario, K2E 1J5
 T: 613 229 7381
 E: info@patersongroup.com

Transportation Engineer
COH TRANSPORTATION INC.
 113 Marlborough Avenue
 Ottawa, Ontario, K2G 3Z1
 T: 343 999 9117
 E: chris@cohtransport.com

Architecture
RODERICK LAHEY ARCHITECTS
 56 Beech Street
 Ottawa, Ontario, K1S 3J6
 T: 613 724 9932
 E: adam@rodericklahey.com

Structural
ANNE'S O'SULLIVAN VOLLEBEK LTD.
 Ontario Land Surveyors
 14 Concourse Gate, Suite 500
 Nepean, Ontario, K2E 1S6
 T: 613 727 0850
 F: 613 727 0709
 E: edh@sovll.com



SCALE

1:200

IBI GROUP
 400 - 333 Preston Street
 Ottawa ON K1S 5M4 Canada
 tel 613 225 1311 fax 613 225 5868
 ibigroup.com

PROJECT

979, WELLINGTON

PROJECT NO:
126031

DRAWN BY:
J.B./D.P.S.

CHECKED BY:
J.B.

PROJECT MGR:
J.I.M.

APPROVED BY:
J.I.M.

SHEET TITLE

SANITARY DRAINAGE AREA PLAN

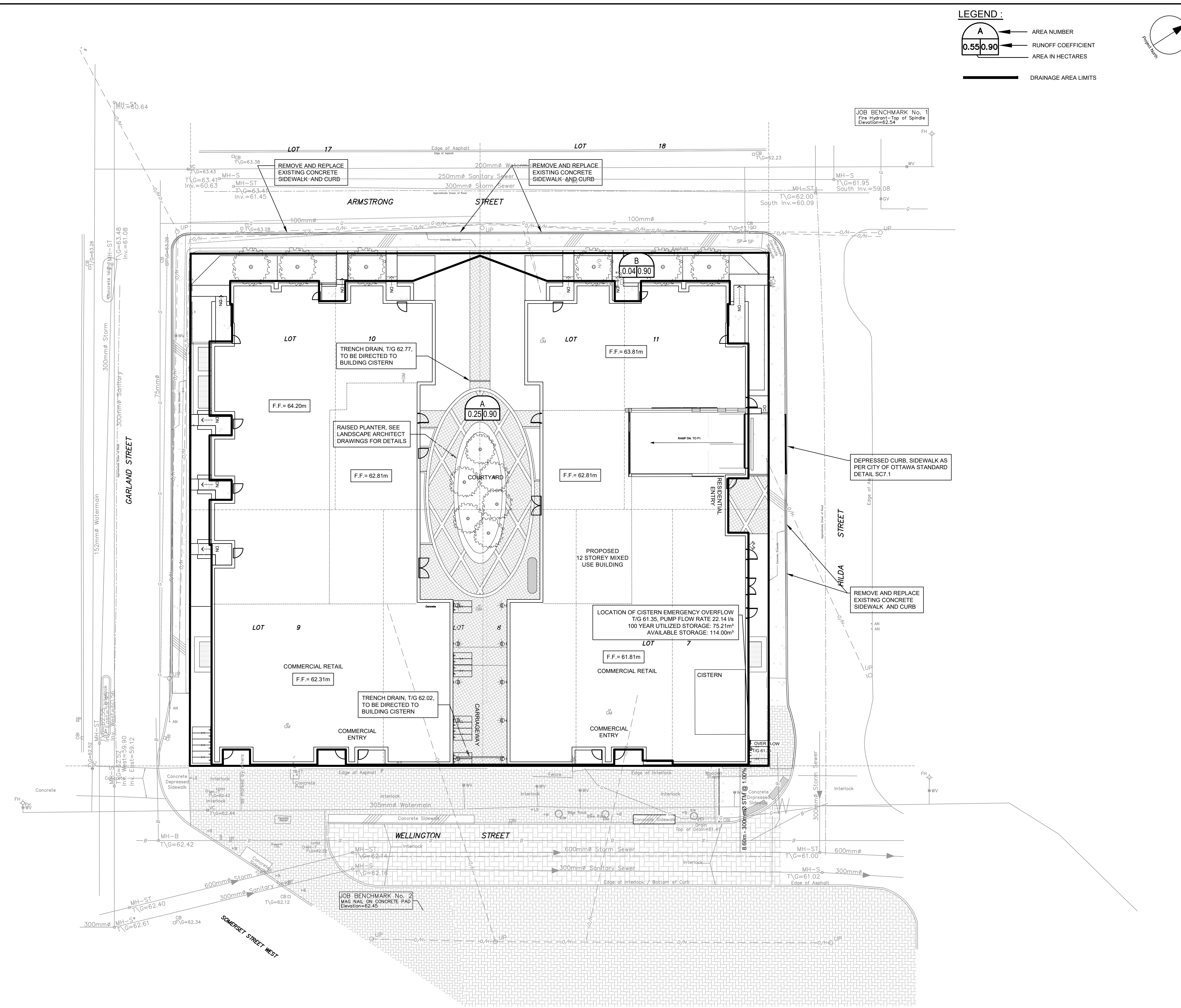
SHEET NUMBER

C-400

ISSUE

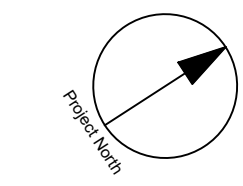
5

CITY FILE No. D07-12-21-0228



LEGEND :

- AREA NUMBER
- RUNOFF COEFFICIENT
- AREA IN HECTARES
- DRAINAGE AREA LIMITS



CLIENT

MAGIL LAURENTIENNE
 ML Wellington Realty Investments Inc.
 C/O ML DEVCO INC
 651, Church Avenue N
 Ottawa (Ontario) K1Z 5G2
 Tel: 613-686-6319

COPYRIGHT

This drawing has been prepared solely for the intended use, thus any reproduction or distribution for any purpose other than that authorized by IBI Group is forbidden. Written dimensions shall have precedence over scaled dimensions. Contractors shall verify and be responsible for all dimensions and conditions on the job, and IBI Group shall be informed of any variations from the dimensions and conditions shown on the drawing. Shop drawings shall be submitted to IBI Group for general conformance before proceeding with fabrication.

IBI Group Professional Services (Canada) Inc.
 is a member of the IBI Group of companies.

ISSUES

No.	DESCRIPTION	DATE
1	ISSUED FOR COORDINATION	2023-01-28
2	ISSUED FOR PERMITS	2023-09-16
3	REVISED AS PER CITY COMMENTS	2023-11-28
4	ISSUED FOR TENDER	2023-02-24
5		

SEE 010, 011, 012 FOR NOTES, LEGEND, CB TABLE, STREET SECTIONS AND DETAILS.

KEY PLAN
 N.T.S.

CONSULTANTS

FOITEN CONSULTANTS INC.
 286 Cooper Street, Suite 300
 Ottawa, Ontario, K2P 2V7
 T: 613 730 5709
 F: 613 730 1136
 E: info@foiten.com

Geotechnical Engineer
PATERSON GROUP
 154 Colborne Road South
 Ottawa, Ontario, K2E 1J5
 T: 613 226 7381
 E: info@patersongroup.com

Transportation Engineer
CGH TRANSPORTATION INC.
 113 Marlborough Avenue
 Ottawa, Ontario, K2G 3Z1
 T: 343 999 9117
 E: chris@cgtransportation.com

Structural Engineer
RODERICK LAHEY ARCHITECTS
 56 Beech Street
 Ottawa, Ontario, K1S 3J6
 T: 613 724 9932
 E: adam@rodericklahey.com

Surveyor
ANNE'S O'SULLIVAN VOLLEBECK LTD.
 Ontario Land Surveyors
 14 Concourse Gate, Suite 500,
 Nepean, Ontario, K2E 1S6
 T: 613 727 0850
 F: 613 727 0719
 E: edh@sovnl.com

SEAL

IBI GROUP
 400 - 333 Preston Street
 Ottawa ON K1S 5M4 Canada
 tel 613 225 1311 fax 613 225 5866
 ibigroup.com

PROJECT

979, WELLINGTON

PROJECT NO:
126031

DRAWN BY: J.B./D.P.S. **CHECKED BY:** J.B.

PROJECT MGR: J.I.M. **APPROVED BY:** J.I.M.

SHEET TITLE

STORM DRAINAGE AREA PLAN

SHEET NUMBER **ISSUE**

C-500 **5**

CITY FILE No. D07-12-21-0228
 Last Saved: February 22, 2023, by stefan.gaiser
 Printed: Thursday, February 23, 2023 12:46:45 PM by Stefan Gaiser

