

1 OVERALL SITE NEW
A100 1:200

ZONING PROVISION	REQUIRED	PROVIDED
MIN. LOT WIDTH	18m	44.86m
MIN. LOT AREA	1,400 m ²	2,774.84 m ²
MIN. FRONT YARD SETBACK	Avg. of nearest lots to max of 3 m	3 m
MIN. REAR YARD SETBACK	4.5 m	4.5 m
MIN. INTERIOR YARD SETBACK	West Lot Line: 3m East Lot Line: To Be Confirmed by City Staff	3 m 3 m
MAX. HEIGHT	Low-rise apartment: 14.5 m Townhouse: 11 m	Low-rise apartment: 13.09 m Townhouse: 6.79 m
AMENITY AREA	Low-rise apartment: 15m ² /unit for first 8 units + 6m ² /unit thereafter = 396 m ² Minimum 120 m ² communal, 80% soft landscaped May not be located in front yard	245m ² exterior amenity space (labelled on site plan). + 285m ² interior amenities (Tenant Resource Centre, & Multi-purpose Rm.)
LANDSCAPED AREA	Min 30% lot area = 832.5 m ²	41.32% - 1146m ²

PARKING QUEUING + LOADING	REQUIRED	PROVIDED
RESIDENTIAL SPACES	0	0
VISITOR SPACES	12	15
ACCESSIBLE PARKING	0	1
BICYCLE PARKING	27	14 Exterior Spaces + 13 Interior Spaces (Located in appartment basement)
GARBAGE COLLECTION	1 x 6 Yard bin	2 x 4 Yard bin
GMP COLLECTION	1 x Yard bin	3 x 240L Bins
FIBRE COLLECTION	2 x Yard bin	8 x 240L Bins
ORGANICS COLLECTION	1 x 240L Bin	1 x 240L Bin

LEGAL DESCRIPTION
Part 2, 4R-27938 PIN 04678-0068

REFERENCE SURVEY
Fairhall, Moffatt & Woodland Ltd V22200

MUNICIPAL ADDRESS
56 Capilano Drive

SITE AREA 2,775 m²

APARTMENT BUILDING AREA 775 m²
TOWNHOUSE BUILDING AREA 324 m²

APARTMENT GROSS FLOOR AREA 3101 m²
TOWNHOUSE GROSS FLOOR AREA 648.5 m²

APARTMENT BUILDING HEIGHT 13.09 m 4 STOREYS
TOWNHOUSE BUILDING HEIGHT 6.79 m 2 STOREYS

ZONE R4Z(2840)-h

SCHEDULE 1: AREA C
SCHEDULE 1A: AREA C

SITE PLAN GENERAL NOTES:

- ALL GENERAL SITE INFORMATION AND CONDITIONS COMPILED FROM EXISTING PLANS AND SURVEYS
- DO NOT SCALE THIS DRAWING
- REPORT ANY DISCREPANCIES PRIOR TO COMMENCING WORK. NO RESPONSIBILITY IS BORN BY THE CONSULTANT FOR UNKNOWN SUBSURFACE CONDITIONS
- CONTRACTOR TO CHECK AND VERIFY ALL DIMENSIONS ON SITE AND REPORT ANY ERRORS AND/OR OMISSIONS TO THE CONSULTANT
- REINSTATE ALL AREAS AND ITEMS DAMAGED AS A RESULT OF CONSTRUCTION ACTIVITIES TO THE SATISFACTION OF THE CONSULTANT
- CONTRACTOR TO LAYOUT PLANTING BEDS, PATHWAYS ETC. TO APPROVAL OF CONSULTANT PRIOR TO ANY JOB EXCAVATION
- THE ACCURACY OF THE POSITION OF UTILITIES IS NOT GUARANTEED - CONTRACTOR TO VERIFY PRIOR TO EXCAVATION
- INDIVIDUAL UTILITY COMPANY MUST BE CONTACTED FOR CONFIRMATION OF UTILITY EXISTENCE AND LOCATION PRIOR TO DIGGING
- ALL DISTURBED AREAS TO BE RESTORED TO ORIGINAL CONDITION OR BETTER UNLESS OTHERWISE NOTED

SITE PLAN KEYNOTES:

- SHADE STRUCTURE
- TANDEM NEXT CONCRETE BLOCK RETAINING WALL
- CANOPY STRUCTURE
- CEDAR FENCE 1800mm HIGH. GATES AS SHOWN
- 1070mm HIGH STAINLESS STEEL GUARD ANCHORED TO CONCRETE BLOCK RETAINING WALL
- WINDOW WELL
- GARDEN PLOTS
- HYDRO TRANSFORMER
- 600mm DEEP TACTILE INDICATION SURFACE CAST INTO CONCRETE WALKWAY
- TYPE 2 ELECTRIC CAR CHARGING STATION WITH DUAL CHARGERS
- 1800x600mm BICYCLE PARKING SPACE c/w PARKING RACK/RING CENTERED BETWEEN EVERY TWO PARKING SPACES.
- EXISTING GUY WIRE TO REMAIN

SITE PLAN LEGEND:

- NEW BUILDING
- EXISTING ASPHALT PAVING
- NEW ASPHALT PAVING
- EXISTING GRASS
- NEW GRASS AND SOFT LANDSCAPING
- EXISTING CONCRETE SIDEWALK
- NEW CONCRETE SIDEWALK
- CRUSHED STONE
- NEW CONCRETE PAD
- BUILDING MAIN ENTRANCE
- SECONDARY ENTRANCE / EMERGENCY EXIT
- SERVICE ENTRANCE
- PROPERTY LINE
- FENCE PER LANDSCAPE
- NEW DOMESTIC WATER
- NEW SANITARY
- NEW STORM
- NEW ELECTRICAL SERVICE (BELOW GRADE)
- EXISTING OVERHEAD WIRE
- DC DROPPED CURB
- CB NEW CATCH BASIN PER CIVIL
- MH NEW MANHOLE PER CIVIL
- CB EXISTING CATCH BASIN - TO REMAIN
- MH EXISTING MANHOLE - TO REMAIN
- LS EXISTING LIGHT STANDARD - TO REMAIN
- FH EXISTING FIRE HYDRANT - TO REMAIN
- UP EXISTING UTILITY POLE - TO REMAIN
- NT NEW TREE

sustainable design · conception écologique
613.564.8118 190 O Connor Street, Suite 100
www.csv.ca Ottawa, Ontario, K2P 2R3



STRUCTURAL ENGINEER
Cleland Jardine Engineering Ltd
580 Terry Fox Drive, Suite 200
Ottawa, ON
613-591-1533
mail@clelandjardine.com



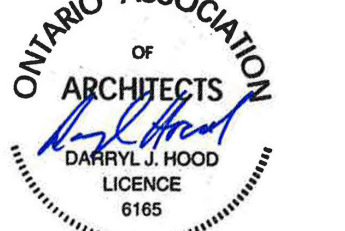
MECHANICAL & ELECTRICAL ENGINEER
Chorley + Bisset Consulting Engineers
250 City Centre Ave.,
Ottawa, ON
613-241-0030
email@chorley.com



CIVIL ENGINEER
McIntosh Perry
115 Walgreen Road
RR3 Carp, ON
613-836-2184
info@mcintoshperry.com



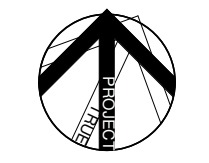
LANDSCAPE ARCHITECT
Fotenn
396 Cooper St, Suite 300
Ottawa, ON
613-730-5709
info@fotenn.com



STAMP

2 2023.03.08 ISSUED FOR SITE PLAN CONTROL
1 2023.02.03 ISSUED FOR RHI 3 APPLICATION

REV DATE ISSUE



NOTES

- OWNERSHIP OF THE COPYRIGHT OF THE DESIGN AND THE WORKS EXECUTED FROM THE DESIGN REMAINS WITH CSV ARCHITECTS, AND MAY NOT BE REPRODUCED IN ANY FORM WITHOUT THE WRITTEN CONSENT OF CSV ARCHITECTS.
- THE DRAWINGS, PRESENTATIONS AND SPECIFICATIONS AS INSTRUMENTS OF SERVICE ARE AND SHALL REMAIN THE PROPERTY OF CSV ARCHITECTS. THEY ARE NOT TO BE USED BY THE CLIENT ON OTHER PROJECTS OR ON EXTENSIONS TO THIS PROJECT WITHOUT THE WRITTEN CONSENT OF CSV ARCHITECTS.
- THIS DRAWING IS TO BE READ IN CONJUNCTION WITH ALL OTHER PROJECT DRAWINGS AND SPECIFICATIONS.
- DO NOT SCALE DRAWINGS. CONTRACTOR SHALL BE RESPONSIBLE TO VERIFY DIMENSIONS ON SITE.
- ALL WORK SHALL BE IN ACCORDANCE WITH THE ONTARIO BUILDING CODE AND ALL SUPPLEMENTS AND APPLICABLE MUNICIPAL REGULATIONS.

CLIENT

OTTAWA SALUS
200 Scott Street
Ottawa Ontario
K1Z 6T2
Salusottawa.org

PROJECT

SALUS 56 CAPILANO
56 Capilano Drive, Ottawa, ON

TITLE

SITE PLAN

PROJECT NO: 2019-0291
DRAWN: AS
APPROVED: DH
SCALE: 1 : 200

REV DRAWING NO.

2 A100



STRUCTURAL ENGINEER
 Cleland Jardine Engineering Ltd
 580 Terry Fox Drive, Suite 200
 Ottawa, ON K1S 5R1
 613-591-1533
 mail@clelandjardine.com



MECHANICAL & ELECTRICAL ENGINEER
 Chorley + Bisset Consulting Engineers
 250 City Centre Ave.,
 Ottawa, ON K1P 1H1
 613-241-0030
 email@chorley.com



CIVIL ENGINEER
 McIntosh Perry
 115 Walgreen Road
 RR3 Carp, ON K0S 1L0
 613-836-2184
 info@mcintoshperry.com



LANDSCAPE ARCHITECT
 Fotenn
 396 Cooper St, Suite 300
 Ottawa, ON K1P 5Y9
 613-730-5709
 info@fotenn.com



STAMP

2 2023.03.08 ISSUED FOR SITE PLAN CONTROL
 1 2023.02.03 ISSUED FOR RHI 3 APPLICATION
 REV DATE ISSUE

NOTES

1. OWNERSHIP OF THE COPYRIGHT OF THE DESIGN AND THE WORKS EXECUTED FROM THE DESIGN REMAINS WITH CSV ARCHITECTS, AND MAY NOT BE REPRODUCED IN ANY FORM WITHOUT THE WRITTEN CONSENT OF CSV ARCHITECTS.
2. THE DRAWINGS, PRESENTATIONS AND SPECIFICATIONS AS INSTRUMENTS OF SERVICE ARE AND SHALL REMAIN THE PROPERTY OF CSV ARCHITECTS. THEY ARE NOT TO BE USED BY THE CLIENT ON OTHER PROJECTS OR ON EXTENSIONS TO THIS PROJECT WITHOUT THE WRITTEN CONSENT OF CSV ARCHITECTS.
3. THIS DRAWING IS TO BE READ IN CONJUNCTION WITH ALL OTHER PROJECT DRAWINGS AND SPECIFICATIONS.
4. DO NOT SCALE DRAWINGS. CONTRACTOR SHALL BE RESPONSIBLE TO VERIFY DIMENSIONS ON SITE.
5. ALL WORK SHALL BE IN ACCORDANCE WITH THE ONTARIO BUILDING CODE AND ALL SUPPLEMENTS AND APPLICABLE MUNICIPAL REGULATIONS.

CLIENT

OTTAWA SALUS

200 Scott Street
 Ottawa Ontario
 K1Z 6T2
 Salusottawa.org

PROJECT

SALUS 56 CAPILANO

56 Capilano Drive, Ottawa, ON

TITLE

APARTMENT ELEVATIONS

PROJECT NO: 2019-0291
 DRAWN: AS, KV
 APPROVED: DH
 SCALE: 1 : 100

REV DRAWING NO.

2 A301

ELEVATION NOTES:

CONTRACTOR TO COORDINATE WITH MANUFACTURER'S SPECIFICATIONS AND INSTALLATIONS GUIDELINES FOR ALL MATERIAL SEALING, TRANSITIONS, SEPARATIONS, FLASHING DETAILS, CONNECTIONS, ANCHORAGES, ETC. CONTRACTOR TO PROVIDE DETAIL DRAWINGS OR MOCK-UP FOR ARCHITECTS REVIEW AND APPROVAL FOR ALL SPECIAL CONDITIONS NOT SHOWN IN THE CONTRACT DOCUMENTS.

ELEVATION KEYNOTES:

- 1 OVERFLOW SCUPPER FLASHING COLOUR TO MATCH PARAPET CAP FLASHING
- 2 FUTURE PHOTOVOLTAIC ARRAY
- 3 ROOF ACCESS HATCH
- 4 PRE FINISHED METAL PARAPET CAP FLASHING
- 5 CANOPY STRUCTURE
- 6 MECHANICAL VENTILATION WELL
- 7 BICYCLE PARKING RACK/RING
- 8 BUILDING SIGNAGE
- 9 WALL MOUNTED EXTERIOR LIGHT
- 10 1070mm HIGH STAINLESS STEEL GUARD ANCHORED TO CONCRETE BLOCK RETAINING WALL
- 11 CONCRETE FACED INSULATION PANEL
- 12 STANDING SEAM METAL ROOF

ELEVATION LEGEND:

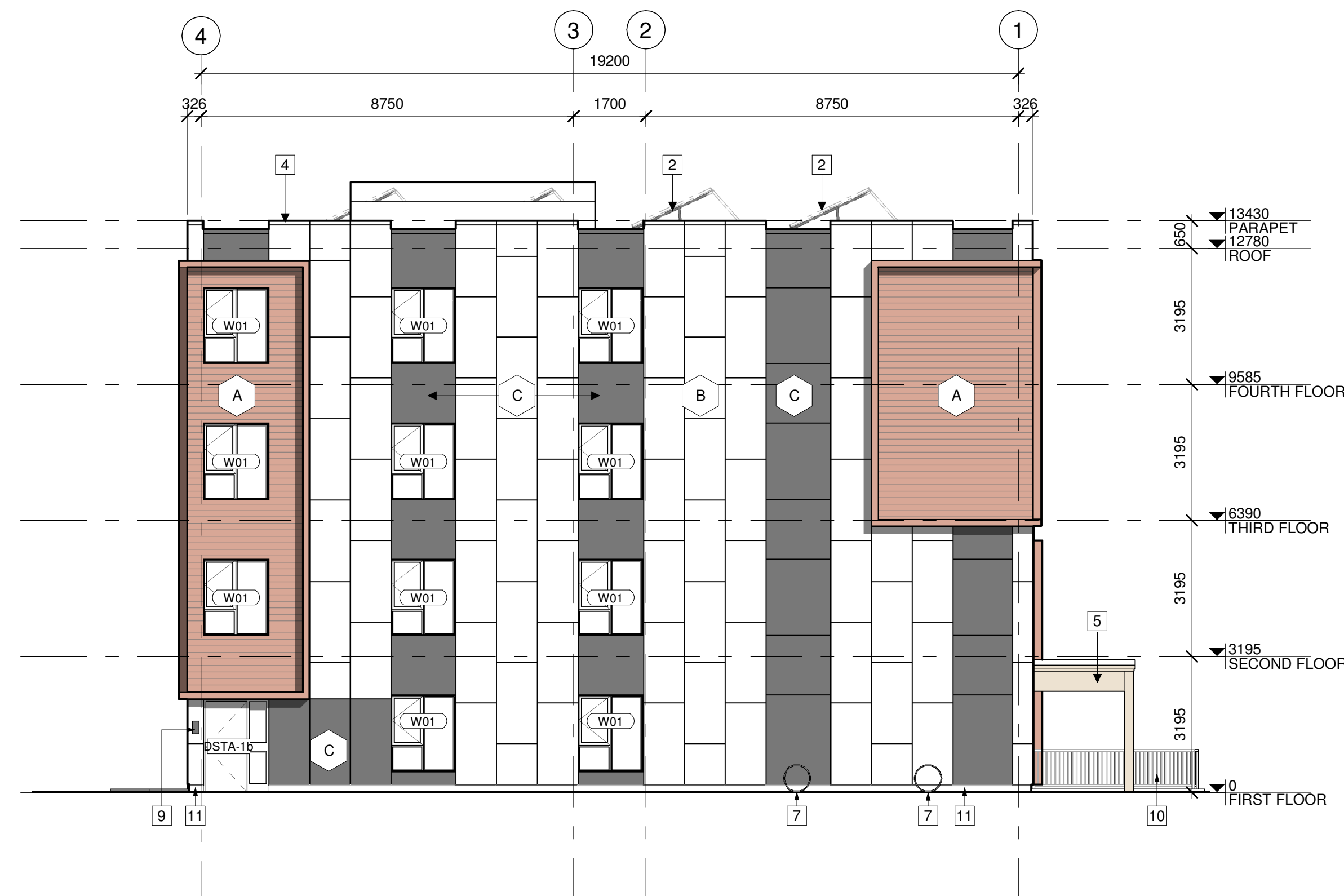
HATCH PATTERNS SHOWN ARE FOR GRAPHIC PURPOSES ONLY AND SHOULD BE COORDINATED WITH ACTUAL SPECIFIED MATERIALS.

HATCH	SYMBOL	DESCRIPTION
	A	SIMULATED WOOD PLANK ALUMINIUM SIDING MANUFACTURER: TBD COLOUR: TBD
	B	METAL CASSETTE PANEL CLADDING MANUFACTURER: TBD COLOUR: TBD
	C	CONCRETE REINFORCED PANEL CLADDING MANUFACTURER: TBD COLOUR: TBD



1 ELEVATION - NORTH

A301 1:100



3 ELEVATION - EAST

A301 1:100

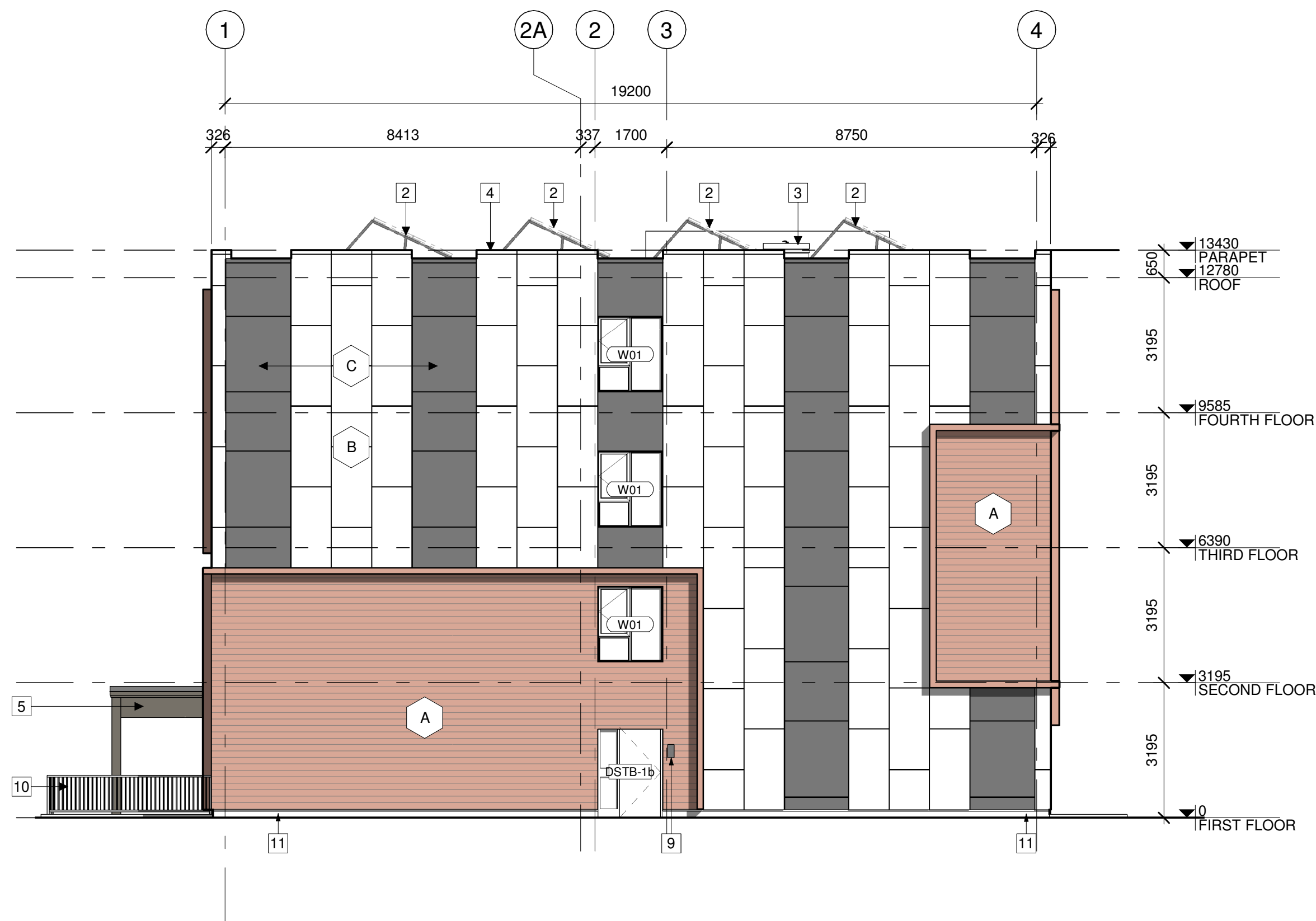


2 NORTH/EAST PERSPECTIVE VIEW

A301



1 ELEVATION - SOUTH
A302 1:100



2 ELEVATION - WEST
A302 1:100



3 SOUTH/WEST PERSPECTIVE VIEW
A302

ELEVATION NOTES:

CONTRACTOR TO COORDINATE WITH MANUFACTURER'S SPECIFICATIONS AND INSTALLATIONS GUIDELINES FOR ALL MATERIAL SEALING, TRANSITIONS, SEPARATIONS, FLASHING DETAILS, CONNECTIONS, ANCHORAGES, ETC. CONTRACTOR TO PROVIDE DETAIL DRAWINGS OR MOCK-UP FOR ARCHITECTS REVIEW AND APPROVAL FOR ALL SPECIAL CONDITIONS NOT SHOWN IN THE CONTRACT DOCUMENTS.

ELEVATION KEYNOTES:

- 1 OVERFLOW SCUPPER FLASHING COLOUR TO MATCH PARAPET CAP FLASHING
- 2 FUTURE PHOTOVOLTAIC ARRAY
- 3 ROOF ACCESS HATCH
- 4 PRE FINISHED METAL PARAPET CAP FLASHING
- 5 CANOPY STRUCTURE
- 6 MECHANICAL VENTILATION WELL
- 7 BICYCLE PARKING RACK/RING
- 8 BUILDING SIGNAGE
- 9 WALL MOUNTED EXTERIOR LIGHT
- 10 1070mm HIGH STAINLESS STEEL GUARD ANCHORED TO CONCRETE BLOCK RETAINING WALL
- 11 CONCRETE FACED INSULATION PANEL
- 12 STANDING SEAM METAL ROOF

ELEVATION LEGEND:

HATCH PATTERNS SHOWN ARE FOR GRAPHIC PURPOSES ONLY AND SHOULD BE COORDINATED WITH ACTUAL SPECIFIED MATERIALS.

HATCH	SYMBOL	DESCRIPTION
	A	SIMULATED WOOD PLANK ALUMINIUM SIDING MANUFACTURER: TBD COLOUR: TBD
	B	METAL CASSETTE PANEL CLADDING MANUFACTURER: TBD COLOUR: TBD
	C	CONCRETE REINFORCED PANEL CLADDING MANUFACTURER: TBD COLOUR: TBD



STRUCTURAL ENGINEER
Cleland Jardine Engineering Ltd
580 Terry Fox Drive, Suite 200
Ottawa, ON
613-591-1533
mail@clelandjardine.com



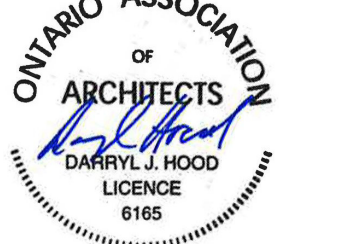
MECHANICAL & ELECTRICAL ENGINEER
Chorley + Bisset Consulting Engineers
250 City Centre Ave.,
Ottawa, ON
613-241-0030
email@chorley.com



CIVIL ENGINEER
McIntosh Perry
115 Walgreen Road
RR3 Carp, ON
613-836-2184
info@mcintoshperry.com



LANDSCAPE ARCHITECT
Fotenn
396 Cooper St, Suite 300
Ottawa, ON
613-730-5709
info@fotenn.com



STAMP

2 2023.03.08 ISSUED FOR SITE PLAN CONTROL
1 2023.02.03 ISSUED FOR RHI-3 APPLICATION
REV DATE ISSUE

NOTES

1. OWNERSHIP OF THE COPYRIGHT OF THE DESIGN AND THE WORKS EXECUTED FROM THE DESIGN REMAINS WITH CSV ARCHITECTS, AND MAY NOT BE REPRODUCED IN ANY FORM WITHOUT THE WRITTEN CONSENT OF CSV ARCHITECTS.
2. THE DRAWINGS, PRESENTATIONS AND SPECIFICATIONS AS INSTRUMENTS OF SERVICE ARE AND SHALL REMAIN THE PROPERTY OF CSV ARCHITECTS. THEY ARE NOT TO BE USED BY THE CLIENT ON OTHER PROJECTS OR ON EXTENSIONS TO THIS PROJECT WITHOUT THE WRITTEN CONSENT OF CSV ARCHITECTS.
3. THIS DRAWING IS TO BE READ IN CONJUNCTION WITH ALL OTHER PROJECT DRAWINGS AND SPECIFICATIONS.
4. DO NOT SCALE DRAWINGS. CONTRACTOR SHALL BE RESPONSIBLE TO VERIFY DIMENSIONS ON SITE.
5. ALL WORK SHALL BE IN ACCORDANCE WITH THE ONTARIO BUILDING CODE AND ALL SUPPLEMENTS AND APPLICABLE MUNICIPAL REGULATIONS.

CLIENT

OTTAWA SALUS

200 Scott Street
Ottawa Ontario
K1Z 6T2
Salusottawa.org

PROJECT

SALUS 56 CAPILANO

56 Capilano Drive, Ottawa, ON

TITLE

APARTMENT ELEVATIONS

PROJECT NO: 2019-0291
DRAWN: AS, KV
APPROVED: DH
SCALE: 1:100

REV DRAWING NO.

2 A302



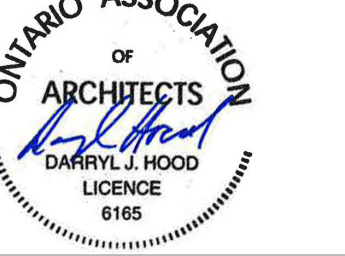
STRUCTURAL ENGINEER
 Cleland Jardine Engineering Ltd
 580 Terry Fox Drive, Suite 200
 Ottawa, ON 613-591-1533
 mail@clelandjardine.com



MECHANICAL & ELECTRICAL ENGINEER
 Chorley + Bisset Consulting Engineers
 250 City Centre Ave.,
 Ottawa, ON 613-241-0030
 email@chorley.com

CIVIL ENGINEER
 McIntosh Perry
 115 Walgreen Road
 RR3 Carp, ON 613-836-2184
 info@mcintoshperry.com

LANDSCAPE ARCHITECT
 Fotenn Planning + Design
 396 Cooper St, Suite 300
 Ottawa, ON 613-730-5709
 info@fotenn.com



STAMP

2 2023.03.08 ISSUED FOR SITE PLAN CONTROL
 1 2023.02.03 ISSUED FOR RHI 3 APPLICATION
 REV DATE ISSUE

NOTES

1. OWNERSHIP OF THE COPYRIGHT OF THE DESIGN AND THE WORKS EXECUTED FROM THE DESIGN REMAINS WITH CSV ARCHITECTS, AND MAY NOT BE REPRODUCED IN ANY FORM WITHOUT THE WRITTEN CONSENT OF CSV ARCHITECTS.
2. THE DRAWINGS, PRESENTATIONS AND SPECIFICATIONS AS INSTRUMENTS OF SERVICE ARE AND SHALL REMAIN THE PROPERTY OF CSV ARCHITECTS. THEY ARE NOT TO BE USED BY THE CLIENT ON OTHER PROJECTS OR ON EXTENSIONS TO THIS PROJECT WITHOUT THE WRITTEN CONSENT OF CSV ARCHITECTS.
3. THIS DRAWING IS TO BE READ IN CONJUNCTION WITH ALL OTHER PROJECT DRAWINGS AND SPECIFICATIONS.
4. DO NOT SCALE DRAWINGS. CONTRACTOR SHALL BE RESPONSIBLE TO VERIFY DIMENSIONS ON SITE.
5. ALL WORK SHALL BE IN ACCORDANCE WITH THE ONTARIO BUILDING CODE AND ALL SUPPLEMENTS AND APPLICABLE MUNICIPAL REGULATIONS.

CLIENT

OTTAWA SALUS

200 Scott Street
 Ottawa Ontario
 K1Z 6T2
 Salusottawa.org

PROJECT

SALUS 56 CAPILANO

56 Capilano Drive, Ottawa, ON

TITLE

TOWNHOUSE ELEVATIONS

PROJECT NO: 2019-0291
 DRAWN: AS, KV
 APPROVED: DH
 SCALE: 1 : 100

REV DRAWING NO.

2 A310

ELEVATION NOTES:

CONTRACTOR TO COORDINATE WITH MANUFACTURER'S SPECIFICATIONS AND INSTALLATIONS GUIDELINES FOR ALL MATERIAL SEALING, TRANSITIONS, SEPARATIONS, FLASHING DETAILS, CONNECTIONS, ANCHORAGES, ETC. CONTRACTOR TO PROVIDE DETAIL DRAWINGS OR MOCK-UP FOR ARCHITECTS REVIEW AND APPROVAL FOR ALL SPECIAL CONDITIONS NOT SHOWN IN THE CONTRACT DOCUMENTS.

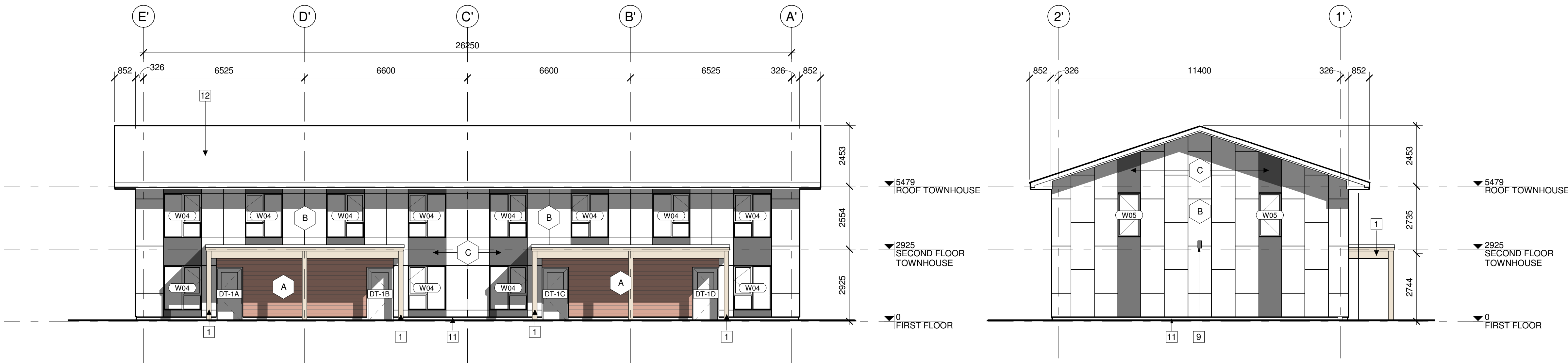
ELEVATION KEYNOTES:

- 1 OVERFLOW SCUPPER FLASHING COLOUR TO MATCH PARAPET CAP FLASHING
- 2 FUTURE PHOTOVOLTAIC ARRAY
- 3 ROOF ACCESS HATCH
- 4 PRE FINISHED METAL PARAPET CAP FLASHING
- 5 CANOPY STRUCTURE
- 6 MECHANICAL VENTILATION WELL
- 7 BICYCLE PARKING RACK/RING
- 8 BUILDING SIGNAGE
- 9 WALL MOUNTED EXTERIOR LIGHT
- 10 1070mm HIGH STAINLESS STEEL GUARD ANCHORED TO CONCRETE BLOCK RETAINING WALL
- 11 CONCRETE FACED INSULATION PANEL
- 12 STANDING SEAM METAL ROOF

ELEVATION LEGEND:

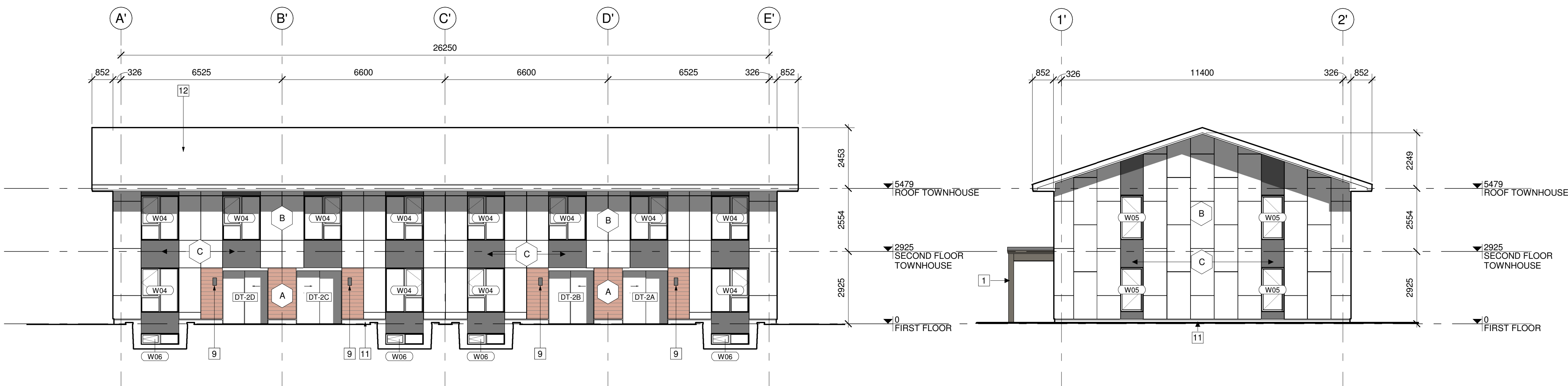
HATCH PATTERNS SHOWN ARE FOR GRAPHIC PURPOSES ONLY AND SHOULD BE COORDINATED WITH ACTUAL SPECIFIED MATERIALS.

HATCH	SYMBOL	DESCRIPTION
	A	SIMULATED WOOD PLANK ALUMINIUM SIDING MANUFACTURER: TBD COLOUR: TBD
	B	METAL CASSETTE PANEL CLADDING MANUFACTURER: TBD COLOUR: TBD
	C	CONCRETE REINFORCED PANEL CLADDING MANUFACTURER: TBD COLOUR: TBD



1 TOWNHOUSES NORTH ELEVATION
 A310 1:100

2 TOWNHOUSES EAST ELEVATION
 A310 1:100



3 TOWNHOUSES SOUTH ELEVATION
 A310 1:100

4 TOWNHOUSES WEST ELEVATION
 A310 1:100



5 TOWNHOUSE NORTH/EAST PERSPECTIVE VIEW
 A310



6 TOWNHOUSE SOUTH/WEST PERSPECTIVE VIEW
 A310