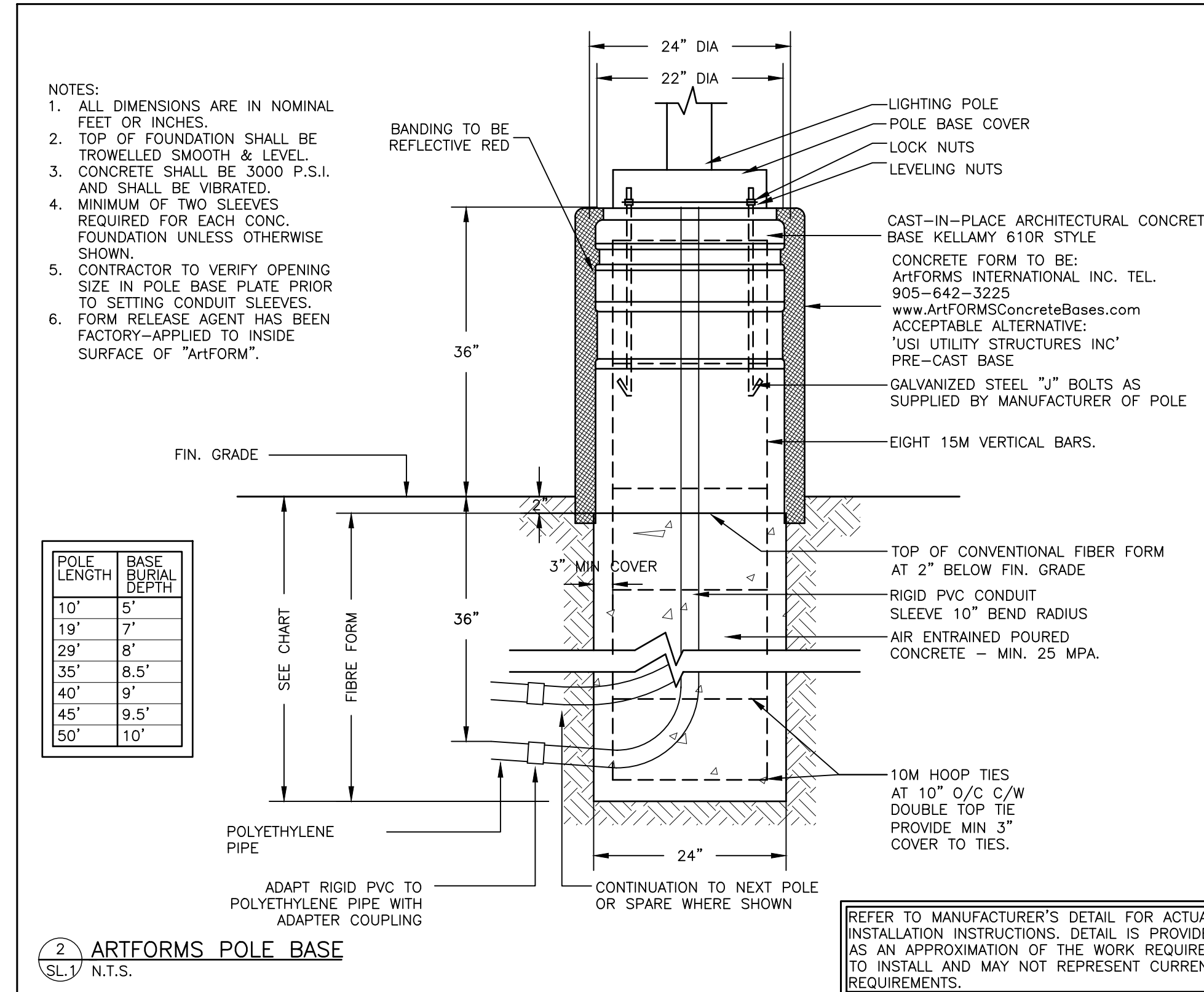


LUMINAIRE SCHEDULE

TYPE	ACCEPTABLE MANUFACTURERS	MODELS	CATALOGUE NUMBERS	DESCRIPTION NUM OF LAMPS VOLTAGE	LOCATION MOUNTING HEIGHT	NOTES
AA	LITHONIA	D SERIES 0	DSXO.LED.P1.30K.80CRI.BLC3 MVOLT.SPA.FAO.DDBXD C/W BACKLIGHT CONTROL	POLE LIGHT 3.3W 3000K 120V	EXT. POLE POLE+BASE 25FT+3FT	C/W 25FT SQUARE STEEL GALVANIZED POLE +3FT BASE. CONFIRM FINISHES WITH ARCHITECT. FIELD ADJUSTABLE OUTPUT INITIAL SETTING AT 100%. SEE NOTES.
BB	LITHONIA	D SERIES 0	DSXO.LED.P4.30K.80CRI.BLC3 MVOLT.SPA.DDBXD C/W BACKLIGHT CONTROL	POLE LIGHT 9.3W 3000K 120V	EXT. POLE POLE+BASE 25FT+3FT	C/W 25FT SQUARE STEEL GALVANIZED POLE +3FT BASE. CONFIRM FINISHES WITH ARCHITECT.
CC	LITHONIA	D SERIES 0	DSXO.LED.P4.30K.80CRI.BLC4 MVOLT.SPA.DDBXD C/W BACKLIGHT CONTROL	POLE LIGHT 9.3W 3000K 120V	EXT. POLE POLE+BASE 25FT+3FT	C/W 25FT SQUARE STEEL GALVANIZED POLE +3FT BASE. CONFIRM FINISHES WITH ARCHITECT.
DD	LITHONIA	WST LED	WST.LED.P1.30K.VF.MVOLT	WALL PACK-FWD 11W 3000K 120V	EXT. WALL WALL ~12FT	COORDINATE EXACT MOUNTING HEIGHTS WITH ARCHITECTURAL ELEVATIONS.
EE	LITHONIA	WST LED	WST.LED.P1.30K.VW.MVOLT	WALL PACK-WIDE 11W 3000K 120V	EXT. WALL WALL ~12FT	COORDINATE EXACT MOUNTING HEIGHTS WITH ARCHITECTURAL FEATURES AND ELEVATIONS.
FF	GOTHAM	EVO4SH	EVO4SH.30.10.DFBR.SMO.MVOLT	4" POT LIGHT 8.8W 3000K 120V	EXT. CANOPY RECESSED CANOPY	WET LOCATION LISTED. CONFIRM CANOPY COLOUR PRIOR TO ORDERING (WHITE/BLACK TRIM)



- #### SITE LIGHTING NOTES:
- THIS DRAWING IS FOR FIXTURE LOCATIONS AND PHOTOMETRIC LAYOUT OF SITE LIGHTING ONLY. CONTACT ELECTRICAL CONSULTANT FOR BUILDING ELECTRICAL SITE PLAN TO CONFIRM LAYOUT OF CONDUIT ROUTING, CIRCUIT ARRANGEMENT, AND WIRE SIZING.
 - VOLTAGES OF FIXTURES ARE TO BE VERIFIED WITH THE ELECTRICAL SITE PLANS PRIOR TO ORDERING FIXTURES.
 - ELEVATIONS OF BASES ARE TO BE COORDINATED WITH SITE GRADING PLAN.
 - LIGHT STANDARDS ARE TO BE COORDINATED WITH WINDOW LOCATIONS. ANY FIXTURES WITHIN 10' (3m) OF THE BUILDING OR ANY CHANGES MADE TO THE BUILDING ENVELOPE ARE TO BE BROUGHT TO THE ATTENTION OF THE SITE LIGHTING CONSULTANT OR PROJECT MANAGER.
 - SUBSTITUTIONS OF LIGHT FIXTURES ARE NOT PERMITTED. IF THE CONTRACTOR SUBSTITUTES LIGHTING FIXTURES THE CONTRACTOR SHALL CARRY ALL COSTS TO HAVE PHOTOMETRIC CALCULATIONS DONE BY THE OFFICE OF THE SITE LIGHTING CONSULTANT AND ALL COSTS ASSOCIATED WITH SITE PLAN RE-SUBMISSION TO THE CITY.
 - PHOTOMETRICS SHOWN CONSIDER ALL FACTORS AFFECTING LIGHT OUTPUT LEVELS SUCH AS LAMP AND BALLAST DEPRECIATION AND DIRT ACCUMULATION OVER AN ESTIMATED ONE-YEAR PERIOD.
 - PHOTOMETRIC VALUES ARE SHOWN IN FOOTCANDLES(fc). A LIGHT LOSS FACTOR OF 0.9 WAS USED IN THE CALCULATION.
 - HOUSE SIDE SHIELDS ARE USED WHERE INDICATED IN LUMINAIRE SCHEDULE. NO ADDITIONAL SHIELDING IS PROVIDED.
 - ALL EXTERIOR LIGHTING POLES ARE TO BE GALVANIZED TO PREVENT CORROSION.
 - FIELD ADJUSTABLE OPTION IS INSTALLED ON TYPE 'AA' POLES. POLES ALONG ENTRY DRIVEWAY MAY BE ADJUSTED DOWN TO 60% OF LIGHT OUTPUT TO MINIMIZE LIGHT SPILL INTO NEW BUILDING. PHOTOMETRICS SHOWN ARE CALCULATED AT 100% WITH LIGHT LOSS FACTOR OF 0.9. AT 100%, THE ENTRY DRIVEWAY MAINTAINS AN AVERAGE OF 0.9 FOOTCANDLES (fc). AT 60%, THE ENTRY DRIVEWAY MAINTAINS AN AVERAGE OF 0.6 FOOTCANDLES(fc).

CALCULATION	HORIZONTAL ILLUMINATION (FOOTCANDLES)
NORTH PARKING AREA	
MINIMUM	0.5
AVERAGE	1.4
MAXIMUM	4.3
UNIFORMITY RATIO	
MAXIMUM-MINIMUM	8.6:1
AVERAGE-MINIMUM	2.8:1
SOUTH PARKING AREA	
MINIMUM	0.2
AVERAGE	0.8
MAXIMUM	4.4
UNIFORMITY RATIO	
MAXIMUM-MINIMUM	22:1
AVERAGE-MINIMUM	4:1
WEST PARKING AREA	
MINIMUM	1.1
AVERAGE	2.3
MAXIMUM	4.7
UNIFORMITY RATIO	
MAXIMUM-MINIMUM	4.3:1
AVERAGE-MINIMUM	2.1:1

- #### EXTERIOR LIGHTING CONTROL:
- ALL EXTERIOR LIGHTING MUST BE CONTROLLED BY PHOTOCELL, ASTRONOMICAL TIME CLOCK, OR A COMBINATION OF BOTH TO ENSURE THAT IT IS NOT 'ON' DURING TIMES WHEN SUFFICIENT DAYLIGHT IS AVAILABLE.

ELECTRICAL LEGEND

	LIGHT FIXTURE (z = TYPE AS PER SCHEDULE)
	WALL MOUNTED LIGHT FIXTURE (z = TYPE AS PER SCHEDULE)
	POLE LIGHT FIXTURE (z = TYPE AS PER SCHEDULE)

5		
4		
3	RE-ISSUED FOR SPA	2023.01.27
2	RE-ISSUED FOR SPA	2022.12.07
1	ISSUED FOR SPA	2022.02.23
No	REVISION	DATE

MIGHTON ENGINEERING

300 VICTORIA ST N, 2ND FL
KITCHENER, ON
N2H 6R9

PH (519) 745-3703
FAX (519) 745-5081
WEB www.mighton.com

PROJECT TITLE:
PROPOSED CHORAC OTTAWA
PLAN#: 18738
FILE#: DO7-12-22-0061
2375 ST. LAURENT BLVD.
OTTAWA, ONTARIO

DRAWING TITLE:
SITE LIGHTING PLAN

DRAWN BY: T.S.	CUSTOMER PROJECT No. -
CHECKED BY: T.A.	MIGHTON PROJECT No. 42171
DATE: FEBRUARY 2022	DRAWING No. SL.1
SCALE: 1:300	