

FOOTING SCHEDULE				
MARK	SIZE (mm)	DEPTH (mm)	REINFORCING	
			No.	SIZE
SF1	250	600	3	15M
SF2	250	800	3	15M LONG , 15M @ 400 SHORT
F1	1000 x 1000	250	3	15M BEW
F2	1500 x 1500	250	5	15M BEW
F3	2500 x 2500	400	10	20M BEW
CF4	2500 x 3400	400	13	20M B SHORT
			10	20M B LONG

PIER SCHEDULE			
MARK	SIZE (mm)	TIES	REINFORCEMENT
P1	500 x 500	10M @ 300mm	4 - 15M V
P2	600 x 600	10M @ 300mm	4 - 15M V

FOUNDATION WALL SCHEDULE		
MARK	SIZE (mm)	REINFORCEMENT
FW1	200	REFER TO WALL SECTIONS
FW2	254	REFER TO WALL SECTIONS
FW3	300	REFER TO WALL SECTIONS
FW4	406	REFER TO WALL SECTIONS

WOOD LINTEL SCHEDULE				
MARK	MEMBER SIZE	CLEAR OPENING (mm)	MINIMUM BEARING LENGTH (mm)	REMARKS
L-1	LVL - 2 - 44mm x 241mm	VARIABLES	75mm	
L-2	LVL - 44mm x 302mm	VARIABLES	75mm	
L-3	3 - 38mm x 235mm	VARIABLES	75mm	
L-4	LVL - 2 - 44mm x 302mm	VARIABLES	75mm	
L-5	2 - 38mm x 140mm	VARIABLES	75mm	
L-6	2 - 38mm x 184mm	VARIABLES	75mm	
L-7	LVL - 44mm x 356mm	VARIABLES	75mm	
L-8	LVL - 2 - 44mm x 184mm	VARIABLES	75mm	
ML-1	2 - 38mm x 184mm	VARIABLES	75mm	
ML-2	2 - 38mm x 235mm	VARIABLES	75mm	

NOTES :

- LAMINATED VENEER LUMBER CAN BE SOLID MEMBER OR BUILT UP PLIES CONNECTED AS PER MANUFACTURE SPECS.
- USE 2.0E SELECTED LAMINATED VENEER LUMBER OR EQUIVALENT.
- STEEL LINTEL FOR ARCHITECTURER VENEER:
 

L90x90x6.4	FOR OPENING SPAN	= 1010
L125x90x6.4 (LLV)	FOR OPENING SPAN BETWEEN	= 1010mm TO 2610mm

WOOD SHEAR WALL SCHEDULE							
MARK	SIZE	ENDS STUDS	END ANCHORS	SHEATHING	SHEATHING NAILS	BOTTOM PLATE ANCHORS	REMARKS
SW1	38 x 241 LSL @ 400mm	3 - 38 x 241 LSL	HD5B SIMPSON STRONG TIE w/ 2 - 20mm STUD BOLTS	10mm OSB	3.25mm x 64mm @ 100	16mm x 450mm ANCHOR BOLTS	PROVIDE END STUDS, END ANCHORS, AND BOTTOM PLATE ANCHORS @ 'HD' LOCATIONS NOTED ON PLAN  LAP ANCHOR BOLTS WITH 2 - 15M V. REBAR FROM FOUNDATION WALL
SW2	38 x 140 @ 400mm	3 - 38 x 140	HD12 SIMPSON STRONG TIE w/ 4 - 25mm STUD BOLTS	10mm OSB (BOTH SIDES)	3.25mm x 64mm @ 75	25mm x 450mm ANCHOR BOLTS	
SW3	38 x 140 @ 400mm	3 - 38 x 140	HD9B SIMPSON STRONG TIE w/ 3 - 22mm STUD BOLTS	10mm OSB	3.25mm x 64mm @ 75	22mm x 450mm ANCHOR BOLTS	
SW4	38 x 184 @ 400mm	3 - 38 x 184	HD12 SIMPSON STRONG TIE w/ 4 - 25mm STUD BOLTS	10mm OSB (BOTH SIDES)	3.25mm x 64mm @ 100	25mm x 450mm ANCHOR BOLTS	
SW5	38 x 241 LSL @ 400mm	4 - 38 x 241 LSL	HD19 SIMPSON STRONG TIE w/ 5 - 25mm STUD BOLTS	10mm OSB (BOTH SIDES)	3.25mm x 64mm @ 100	28mm x 450mm ANCHOR BOLTS	
SW6	38 x 140 @ 400mm	3 - 38 x 140	HD12 SIMPSON STRONG TIE w/ 4 - 25mm STUD BOLTS	12mm OSB (BOTH SIDES)	3.25mm x 64mm @ 50	25mm x 450mm ANCHOR BOLTS	
SW7	38 x 184 @ 400mm	4 - 38 x 184	HD19 SIMPSON STRONG TIE w/ 5 - 25mm STUD BOLTS	15mm OSB (BOTH SIDES)	3.25mm x 64mm @ 100	28mm x 450mm ANCHOR BOLTS	

WOOD STUD WALL SCHEDULE		
MARK	SIZE	REMARKS
W1	38 x 241 @ 400mm	- 1.5E TIMBERSTRAND LSL STUDS - PROVIDE BLOCKING BETWEEN STUDS @ 1200
W2	38 x 140 @ 400mm	- SPF No.1 / No.2 - PROVIDE BLOCKING BETWEEN STUDS @ 1200
W3	38 x 184 @ 400mm	- SPF No.1 / No.2 - PROVIDE BLOCKING BETWEEN STUDS @ 1200

STEEL COLUMN SCHEDULE											
	C1	C2	C3	C4	C5	C6	C7	C8	C9	C10	
TOP OF EAVE ELEV. = 80.10m (SEE ARCHL. DWGS.)											
U/S OF FOYER ROOF ELEV. = 88.10m (SEE ARCHL. DWGS.)											
U/S OF OFFICE ROOF ELEV. = 81.25m (SEE ARCHL. DWGS.)											
TOP MAIN LEVEL ELEV. = 84.00m (SEE ARCHL. DWGS.)											
UNDERSIDE OF BASE PLATE ELEV. = -0.250m (-250mm) BELOW FIN. FLR. TYPICAL UNLESS NOTED OTHERWISE											
BASE PLATE SIZE AND THICKNESS (L x W x THK.)	350 x 350 x 20	350 x 350 x 20	400 x 400 x 25	450 x 450 x 30	350 x 350 x 20	350 x 350 x 20	375 x 375 x 25	400 x 400 x 20	350 x 350 x 20	350 x 350 x 20	
CENTER TO CENTER OF ANCHOR BOLTS	Ax	250	250	300	350	250	250	275	300	250	250
	Ay	250	250	300	350	250	250	275	300	250	250
BASE PLATE TYPE	A	A	A	B	A	A	A	A	A	A	A
ANCHOR BOLTS	4 - 20M	4 - 20M	4 - 25M	6 - 25M	4 - 20M	4 - 20M	4 - 25M	4 - 20M	4 - 20M	4 - 20M	4 - 20M

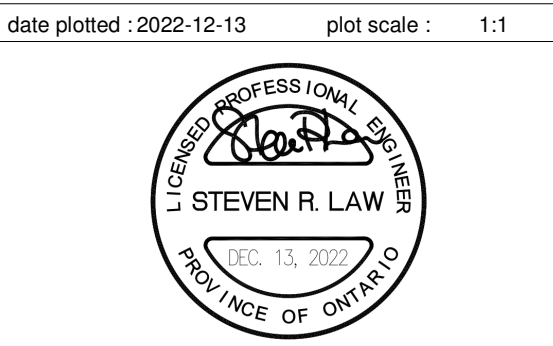
ANCHOR BOLT

BASE PLATE TYPE 'A'

BASE PLATE TYPE 'B'

1	RE-ISSUED FOR SPA	2023-01-27	KR/ PF
0	ISSUED FOR SPA	2022-12-13	PF
no.	revisions	date	init.

GENERAL NOTE:  
 THESE DRAWINGS ARE COPYRIGHT AND THE PROPERTY OF REINDERS + LAW LTD. THE DRAWINGS MAY NOT BE USED FOR CONSTRUCTION WITHOUT THE PERMISSION OF REINDERS + LAW LTD. AND UNLESS SEALED AND SIGNED BY THE ARCHITECT/ENGINEER. REPRODUCTION OF THESE DRAWINGS WITHOUT THE CONSENT OF REINDERS + LAW IS STRICTLY PROHIBITED.  
 DO NOT SCALE THESE DRAWINGS. ANY ERROR OR DISCREPANCY IS TO BE REPORTED IMMEDIATELY TO: REINDERS + LAW LTD.



date plotted : 2022-12-13    plot scale : 1:1

drawn : J.M.  
 designed : P.F.  
 reviewed : S.L.  
 date : 2022-12-13  
 scale : As indicated

project :  
 C.H.O.R.A.C.  
 2375 St. Laurent Blvd, Ottawa ON

PLAN #: 18738  
 FILE #: D07-12-22-0061

drawing : SCHEDULES

