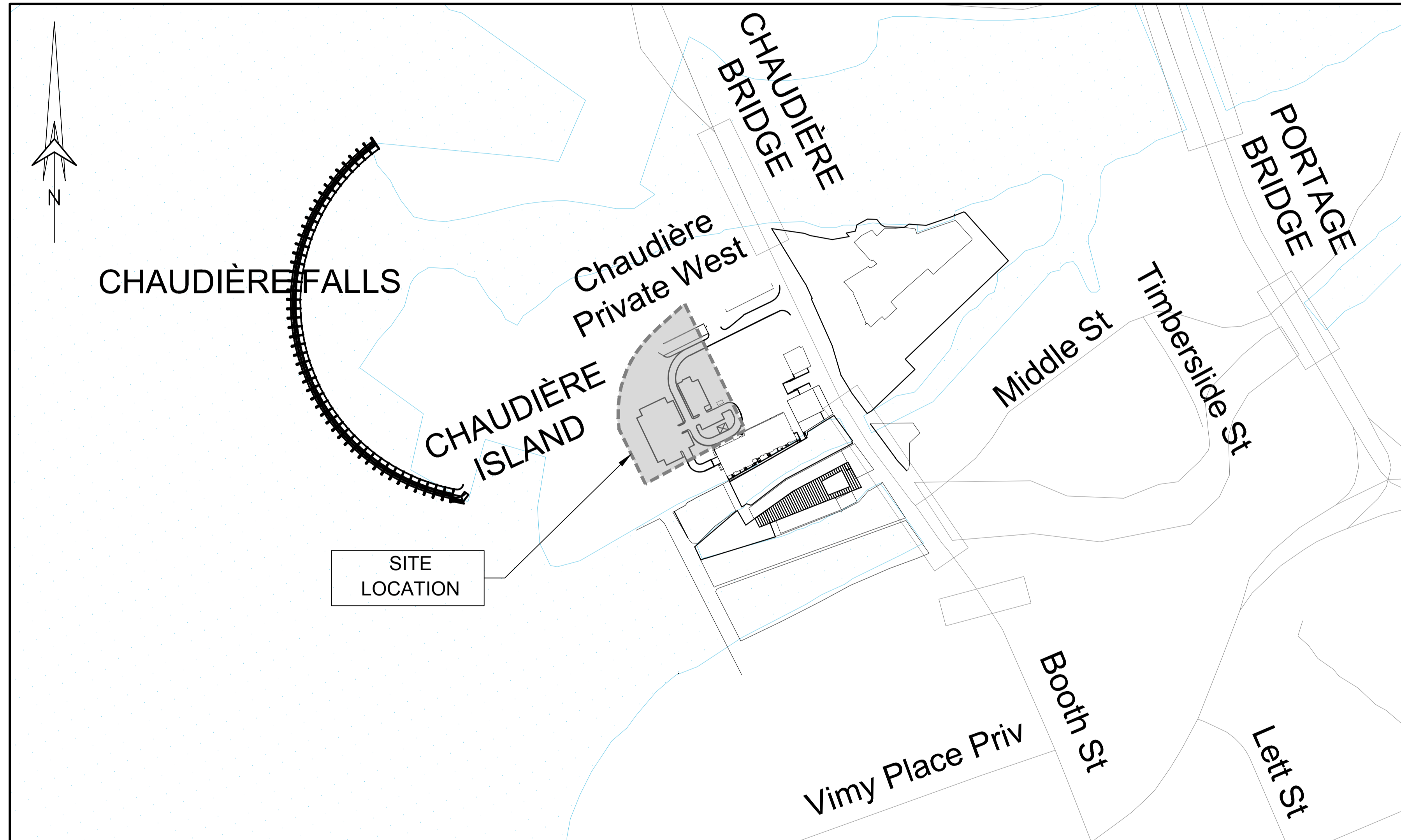


DREAM THEIA BLOCK 204A L



LIST OF DRAWINGS

PLAN No:	DESCRIPTION
C000	COVER PAGE
C001	TOPOGRAPHICAL SURVEY PLAN
C002	NOTES PLAN
C003	SEDIMENT AND EROSION CONTROL PLAN
C004	GRADE CONTROL AND DRAINAGE PLAN
C005	SITE SERVICING LAYOUT
C006A	PLAN AND PROFILE STA. 1+000 TO 1+145
C006B	PLAN AND PROFILE STA. 2+000 TO 2+100
C007	CROSS-SECTIONS AND DETAILS
C008	STORM WATER MANAGEMENT PLAN

ZIBI ONTARIO 315 PRIVE MIWATE, CHAUDIÈRE ISLAND OTTAWA, ONTARIO

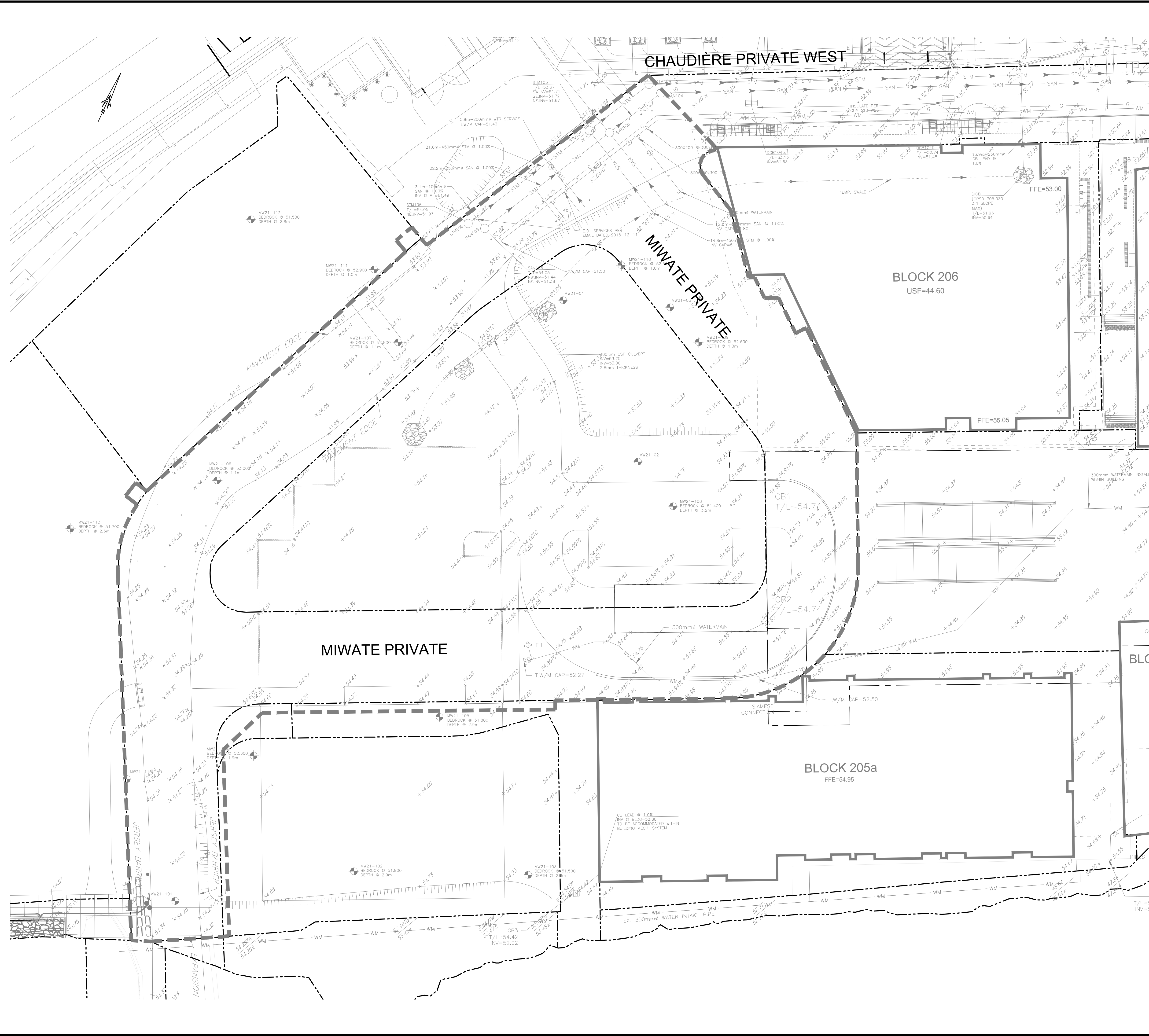


7-814-888-8888
119-360 Chaudière Street, Ottawa, ON K1P 3B8 CANADA

DREAM THEIA BLOCK 204A L
ZIBI ONTARIO, 315 PRIVE MIWATE,
CHAUDIÈRE ISLAND, OTTAWA, ONTARIO
ISSUED FOR ECA, FEBRUARY 03rd, 2023

City of Ottawa Project # : D07-12-22-0071
City of Ottawa Plan # : 18749

TITLE LOCK 2438 VERT ENG 3.0
 PRINT DATE: 2023/03/14 PAPER SIZE: A0
 PATH: Z:\Cma-C1\01\Projects\A000991_24u_Bloc 7_Ottawa400_Drafting\400_Civic-1_topo.dwg / LAYOUT: C001_Topo



EXISTING

- WM WATERMAIN
- SAN SANITARY SEWER
- STM STORM SEWER
- D DRAIN
- G GAS LINE (APPROX. LOC.)
- U UNDERGROUND TELEPHONE (APPROX. LOC.)
- T UNDERGROUND TRAFFIC CABLE (APPROX. LOC.)
- E UNDERGROUND ELECTRICITY (APPROX. LOC.)
- OH OVERHEAD WIRES
- CA LOT LINE
- E RIGHT-OF-WAY LIMITS
- EASEMENT
- TOP OF SLOPE
- BOTTOM OF SLOPE
- CATCHBASIN
- MANHOLE/CATCHBASIN
- MANHOLE
- FIRE HYDRANT
- VALVE
- REDUCER
- TEE
- VALVE CHAMBER
- PRIVATE UTILITIES (WATERMAIN)
- NATURAL GAS VALVE
- SIGN
- STOP SIGN
- TRAFFIC LIGHT
- ELECTRICITY POLE
- TELEPHONE POLE
- ELECT. TEL. STREET LIGHT POLE
- ELECT. TEL. TRANSFORMER POLE
- PRIVATE STREET LIGHT
- ELECTRICITY MANHOLE
- TELEPHONE MANHOLE
- SURVEY STATION
- ELEVATION
- INVERT
- BORHOLE (LOC. APPROX.)
- WORK LIMIT

PROPOSED

ABBREVIATIONS

- STM → STORM
- SAN → SANITARY
- WM → WATERMAIN
- WTR → WATER
- INV → INVERT
- MH → MANHOLE
- CB → CATCHBASIN
- TL → TOP OF LID
- OBV → OBVERT
- FFE → FINISHED FLOOR ELEVATION
- BLDG → BUILDING
- SERV → SERVICE

1:250

No.	Date	Description	By
4	FEB 03, 2023	ISSUED FOR ECA	A.C.
3	NOV 21, 2022	ISSUED FOR SITE PLAN APPLICATION	A.C.
2	AUG 31, 2022	ISSUED FOR SITE PLAN APPLICATION	A.C.
1	APR. 18, 2022	ISSUED FOR SITE PLAN APPLICATION	A.C.

TOPOGRAPHIC INFORMATION

- CHAUDIÈRE AND ALBERT ISLAND TOPOGRAPHIC INFORMATION PROVIDED BY FAIRHALL, MOFFATT & WOODLAND LIMITED, DATED JANUARY 15, 2019.
- BOOTH STREET/FLEET STREET/LOYD STREET/ALBERT STREET TOPOGRAPHIC INFORMATION PROVIDED BY STANTEC GEOMATICS LIMITED, DATED APRIL 20, 2018.
- TEMPORARY ROAD CHAUDIÈRE & ALBERT STREET TOPOGRAPHIC INFORMATION PROVIDED BY STANTEC GEOMATICS LIMITED, DATED AUGUST 08, 2019.

LEGAL INFORMATION

- LEGAL SURVEY PROVIDED BY STANTEC GEOMATICS LIMITED, DATED 2022

BENCH MARK

POINT	NORTHING	EASTING	ELEVATION	DESCRIPTION
10	5031271	365915.9320	54.3480	CP
85591	5031480	366018.9270	51.8200	BOLT
86037	5031454	366008.0430	52.0910	PKN
1000010	5031523	365993.0550	51.2040	MON 2018-007

NOTE OF CAUTION

THE GEODETIC COORDINATES OF EVERY ITEM INCLUDED AS PART OF THIS DOCUMENT ARE IN NAD83 - ORIGINAL / MTM - REFERENCE SYSTEM AND HAVE NO LEGAL VALUE. THE SITE LAYOUT MUST BE COMPLETED USING THE OFFICIAL BENCHMARKS OF AN ACCREDITED LAND SURVEYOR IN THE NAD83 - ORIGINAL / MTM - REFERENCE SYSTEM.

THE UNDERGROUND FEATURES AND INFORMATION THAT APPEAR ON THE DRAWINGS WERE OBTAINED FROM THE PUBLIC UTILITY COMPANIES AND/OR FROM THE CITY EACH RESPECTIVELY.

ALL INFORMATION UNDER THE LEGEND 'EXISTING' IS FOR INFORMATION ONLY. COMPLETE OR EXACT LOCATION AND ELEVATION OF UNDERGROUND SERVICES ARE NOT GUARANTEED.

CERTAIN UNDERGROUND FEATURES ON PRIVATE PROPERTY ARE NOT SHOWN ON THE CURRENT DRAWING.

ANYONE WHO PROCEEDS WITH EXCAVATION WORK SHALL VERIFY THE EXACT LOCATION OF ALL UNDERGROUND FEATURES, BY EXPLORATORY EXCAVATIONS, AND SHALL ASSUME FULL RESPONSIBILITY IF THERE IS ANY DAMAGE THAT OCCURS DURING WORK.

THE CONTRACTOR WILL HAVE THE RESPONSIBILITY AND THE OBLIGATION TO VALIDATE, BY EXPLORATORY EXCAVATION, THE SIZE OF THE PUBLIC UTILITIES UNDERGROUND SERVICES AND TO WARN THE ENGINEER OF ANY CONFLICT WITH THE PROJECTED WORK.

CLIENT:
 DREAM UNLIMITED
 30 ADELAIDE STREET EAST
 SUITE 301
 TORONTO, ON, M5C 3H1
 613-219-2722

ZIBI (Project Address)
 310 Miwate Private
 OTTAWA, ONTARIO
 K1R 0E1

PROJECT NAME:
 ZIBI ONTARIO
 BLOCK 204
 315 PRIVE MIWATE PRIVATE,
 CHAUDIÈRE ISLAND
 OTTAWA, ONTARIO

DESIGNED BY: [Signature] **APPROVED BY:** [Signature]

ENGINEER:

SHEET TITLE:
 TOPOGRAPHICAL
 SURVEY PLAN

DISCIPLINE:
 CIVIL

DRAWER: S.C. POGGIOLI **SCALE:** 1:250

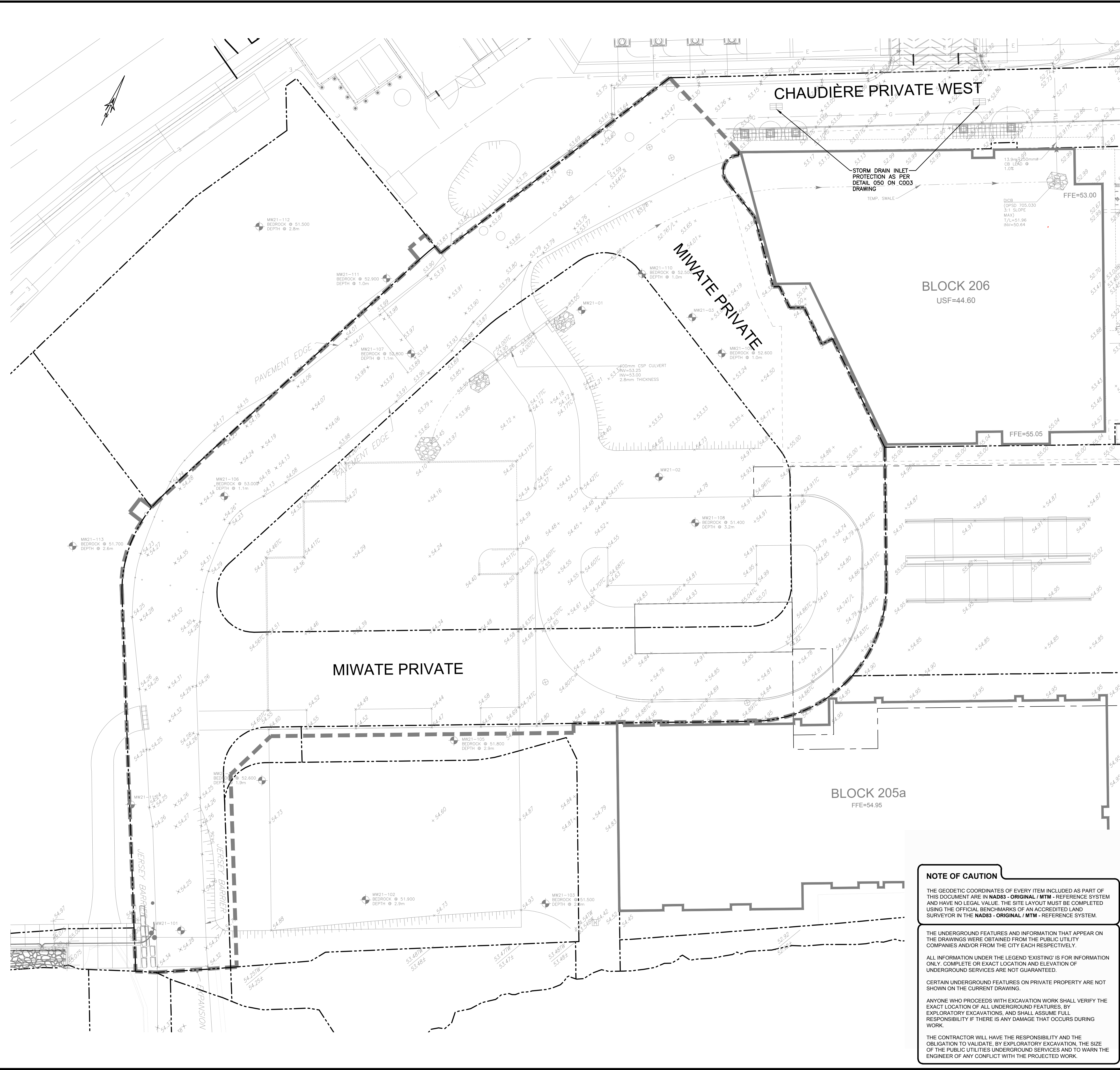
DESIGNER: J. SALUVE **DATE:** 2022/03/14

APPROVER: A. CHAUMONT **APPROVER:** A. CHAUMONT

PROJECT NO.: A000991 **DRAWING NO.:** C001

SHEET NO.: 1 of 11

TITLE LOCK 24328 VERT ENG 3.0
 PRINT DATE: 2023/03/14 PAPER SIZE: A0
 PATH: Z:\Cma-CI\01\01\Projects\A000931_24u_Block 7_Ottawa400_SedimentErosion.dwg_LAYOUT_C003_SEC



CHAUDIÈRE PRIVATE WEST

STORM DRAIN INLET PROTECTION AS PER DETAIL 050 ON C003 DRAWING

BLOCK 206
USF=44.60

MIWATE PRIVATE

MIWATE PRIVATE

BLOCK 205a
FFE=54.95

NOTE OF CAUTION

THE GEODETIC COORDINATES OF EVERY ITEM INCLUDED AS PART OF THIS DOCUMENT ARE IN NAD83 - ORIGINAL / MTM - REFERENCE SYSTEM AND HAVE NO LEGAL VALUE. THE SITE LAYOUT MUST BE COMPLETED USING THE OFFICIAL BENCHMARKS OF AN ACCREDITED LAND SURVEYOR IN THE NAD83 - ORIGINAL / MTM - REFERENCE SYSTEM.

THE UNDERGROUND FEATURES AND INFORMATION THAT APPEAR ON THE DRAWINGS WERE OBTAINED FROM THE PUBLIC UTILITY COMPANIES AND/OR FROM THE CITY EACH RESPECTIVELY.

ALL INFORMATION UNDER THE LEGEND 'EXISTING' IS FOR INFORMATION ONLY. COMPLETE OR EXACT LOCATION AND ELEVATION OF UNDERGROUND SERVICES ARE NOT GUARANTEED.

CERTAIN UNDERGROUND FEATURES ON PRIVATE PROPERTY ARE NOT SHOWN ON THE CURRENT DRAWING.

ANYONE WHO PROCEEDS WITH EXCAVATION WORK SHALL VERIFY THE EXACT LOCATION OF ALL UNDERGROUND FEATURES, BY EXPLORATORY EXCAVATIONS, AND SHALL ASSUME FULL RESPONSIBILITY IF THERE IS ANY DAMAGE THAT OCCURS DURING WORK.

THE CONTRACTOR WILL HAVE THE RESPONSIBILITY AND THE OBLIGATION TO VALIDATE, BY EXPLORATORY EXCAVATION, THE SIZE OF THE PUBLIC UTILITIES UNDERGROUND SERVICES AND TO WARN THE ENGINEER OF ANY CONFLICT WITH THE PROJECTED WORK.

- 1. SEDIMENT AND EROSION CONTROL**
- The contractor shall implement best management practices to provide for protection of the area drainage system and the receiving watercourse. During construction activities the contractor acknowledges that failure to implement appropriate erosion and sediment control measures may be subject to penalties imposed by any applicable regulatory agency.
 - Unless otherwise indicated, all materials and construction methods to be in accordance with the requirements of the latest edition of the Ontario Provincial Standard Specifications and Drawings (OPSS and OPSD), the Ontario Ministry of Environment, Conservation and Parks (MECP), applicable Conservation authorities, the municipal standard specifications and drawings, and all other governing authorities as they apply.
 - Wherever standards, laws and/or regulations are mentioned they refer to their current versions, modifications included.
 - Specifically, sediment and erosion control measures to be constructed as per OPSS MUNI 805.
 - The Contractor must implement best management practices and provide adequate sediment and erosion control measures during construction:
 - Prevent soil erosion which can result from stormwater runoff or wind erosion during construction;
 - Prevent sediment deposits in the storm sewer and/or collecting streams and;
 - Prevent air pollution from dust and particulate matter.
 - Provisions must be made for sediment and erosion control measures prior to stripping the site of vegetation and other deleterious materials. Measures such as phase stripping, vegetation buffer zones, silt fences, straw bales, sediment traps/basins, rock checks, etc. must be constructed and maintained in order to control sediment, as required by the provincial and municipal governing authorities.
 - The Contractor must set up the measures shown on the plan, inspect them frequently and clean and repair or replace the deteriorated structures.
 - When the sediment and erosion control measures have to be removed in order to complete a portion of the work, these same measures must be reinstated.
 - When storing soil on site in piles the Contractor must cover each pile with tarps, straw or a geotextile fabric to avoid fine particle transport by wind and/or streaming rain water.
 - During the construction period, sediment capture silt sacks or filter cloths must be installed and maintained between the frame and cover of all catchbasins and catchbasin/manholes to minimize sediments entering the storm sewer system. All landscaping areas must be completed prior to the removal of the silt sacks or filter cloths.
 - The light duty silt fence barrier must be installed as per OPSD 219.110.
 - At all times the Contractor must maintain the municipal access roads clean and free of sediments. When cleaning the access roads, the Contractor must take the necessary precautions to clear the surfaces covered with sediment prior to cleaning with water.
 - For dust control, Contractor to apply calcium chloride (Type I - OPSS 2501 and CAN/CSB-15-1) and water with equipment approved by the Owner's representative at rate in accordance to OPSS MUNI 506 when directed by Owner's representative.
 - At the end of the construction period, the Contractor is responsible for removal of the temporary sediment and erosion control measures and reconditioning the affected areas.
 - This plan is a "Living Document" which may be revised in the event that the control measures are not sufficient.

EXISTING

- WM WATERMAIN
- SAN SANITARY SEWER
- STW STORM SEWER
- D DRAIN
- G GAS LINE (APPROX. LOC.)
- T UNDERGROUND TELEPHONE (APPROX. LOC.)
- CA UNDERGROUND TRAFFIC CABLE (APPROX. LOC.)
- E UNDERGROUND ELECTRICITY (APPROX. LOC.)
- OT OVERHEAD WIRE
- LOT LINE
- RIGHT-OF-WAY LIMITS
- EASEMENT
- TOP OF SLOPE
- DITCH CENTER
- BOTTOM OF SLOPE
- CATCHBASIN
- MANHOLE/CATCHBASIN
- MANHOLE
- FIRE HYDRANT
- VALVE
- REDUCER
- TEE
- VALVE CHAMBER
- PRIVATE UTILITIES (WATERMAIN)
- NATURAL GAS VALVE
- SIEN SIGN
- STOP SIGN
- TRAFFIC LIGHT
- ELECTRICITY POLE
- TELEPHONE POLE
- ELECT.-TEL. STREET LIGHT POLE
- ELECT.-TEL. TRANSFORMER POLE
- PRIVATE STREET LIGHT
- ELECTRICITY MANHOLE
- TELEPHONE MANHOLE
- SURVEY STATION
- ELEVATION
- MW21-01 BOREHOLE (LOC. APPROX.)
- WORK LIMIT

PROPOSED

ABBREVIATIONS

- STM → STORM
- SAN → SANITARY
- WM → WATERMAIN
- WTR → WATER
- INV → INVERT
- MH → MANHOLE
- CB → CATCHBASIN
- TL → TOP OF LID
- OBV → OVERT
- FFE → FINISHED FLOOR ELEVATION
- BLDG → BUILDING
- SERV → SERVICE

1:250
0 2.5 5 10 15m

No.	Date	Description	By
4	FEB 03, 2023	ISSUED FOR ECA	A.C.
3	NOV 21, 2022	ISSUED FOR SITE PLAN APPLICATION	A.C.
2	AUG 31, 2022	ISSUED FOR SITE PLAN APPLICATION	A.C.
1	APR 18, 2022	ISSUED FOR SITE PLAN APPLICATION	A.C.

STAMPS

LICENSED PROFESSIONAL ENGINEER
 J. A. SAUVÉ
 100200100
 PROVINCE OF ONTARIO

LICENSED PROFESSIONAL ENGINEER
 A. CHAUMONT
 90409194
 PROVINCE OF ONTARIO

DESIGNED BY: [Signature]
 APPROVED BY: [Signature]

ENGINEER:
CIMA+

CLIENT:
 DREAM UNLIMITED
 30 ADELAIDE STREET EAST
 SUITE 301
 TORONTO, ON, M5C 3H1
 613-219-2722
ZIBI (Project Address)
 310 Miwate Private
 OTTAWA, ONTARIO
 K1R 0E1

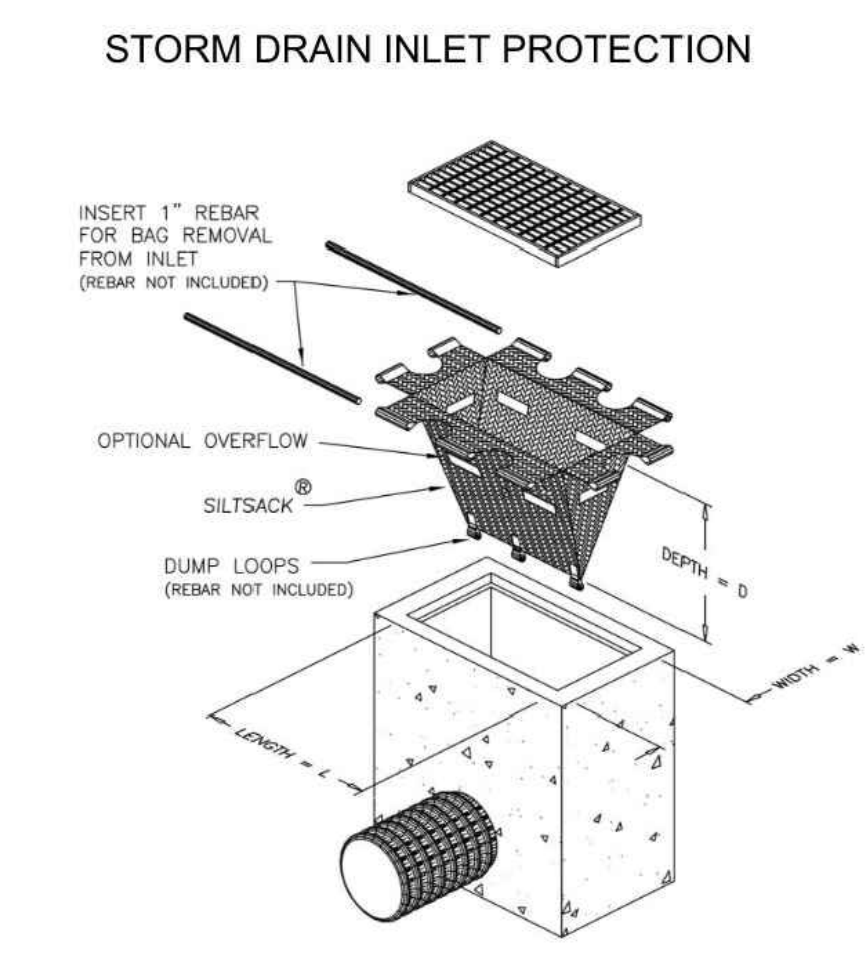
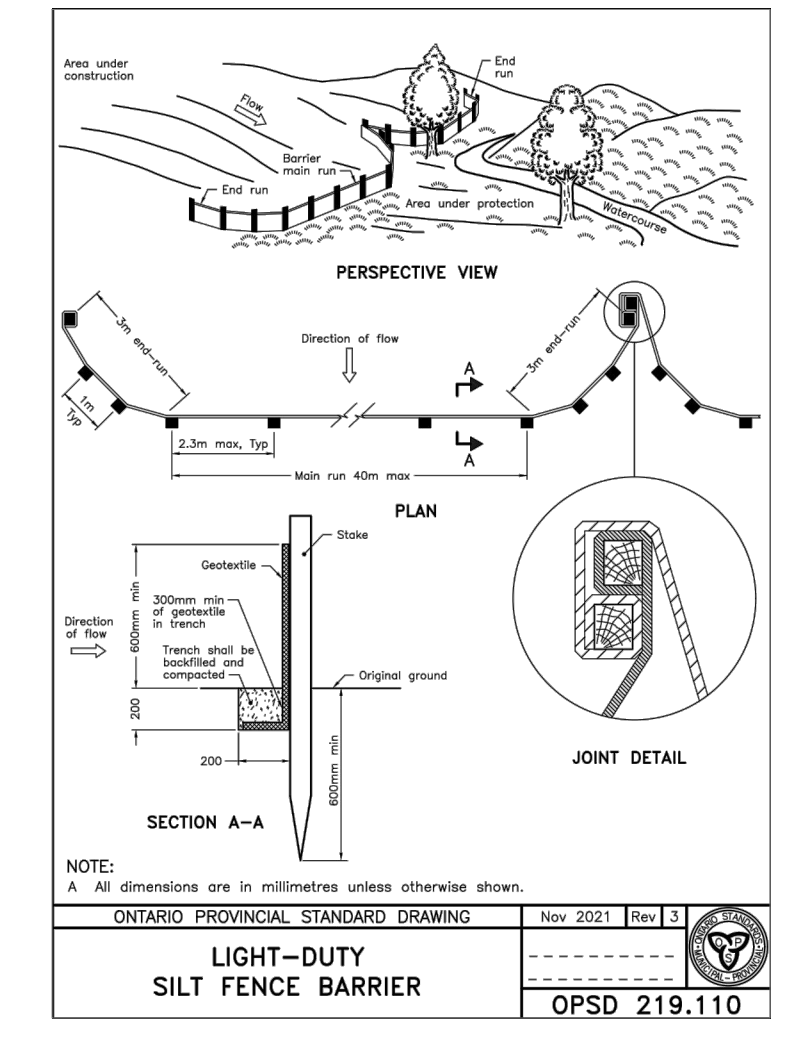
PROJECT NAME:
 ZIBI ONTARIO
 BLOCK 204
 315 PRIVE MIWATE PRIVATE,
 CHAUDIERE ISLAND
 OTTAWA, ONTARIO

SHEET TITLE:
SEDIMENT & EROSION CONTROL PLAN

DISCIPLINE:
 CIVIL

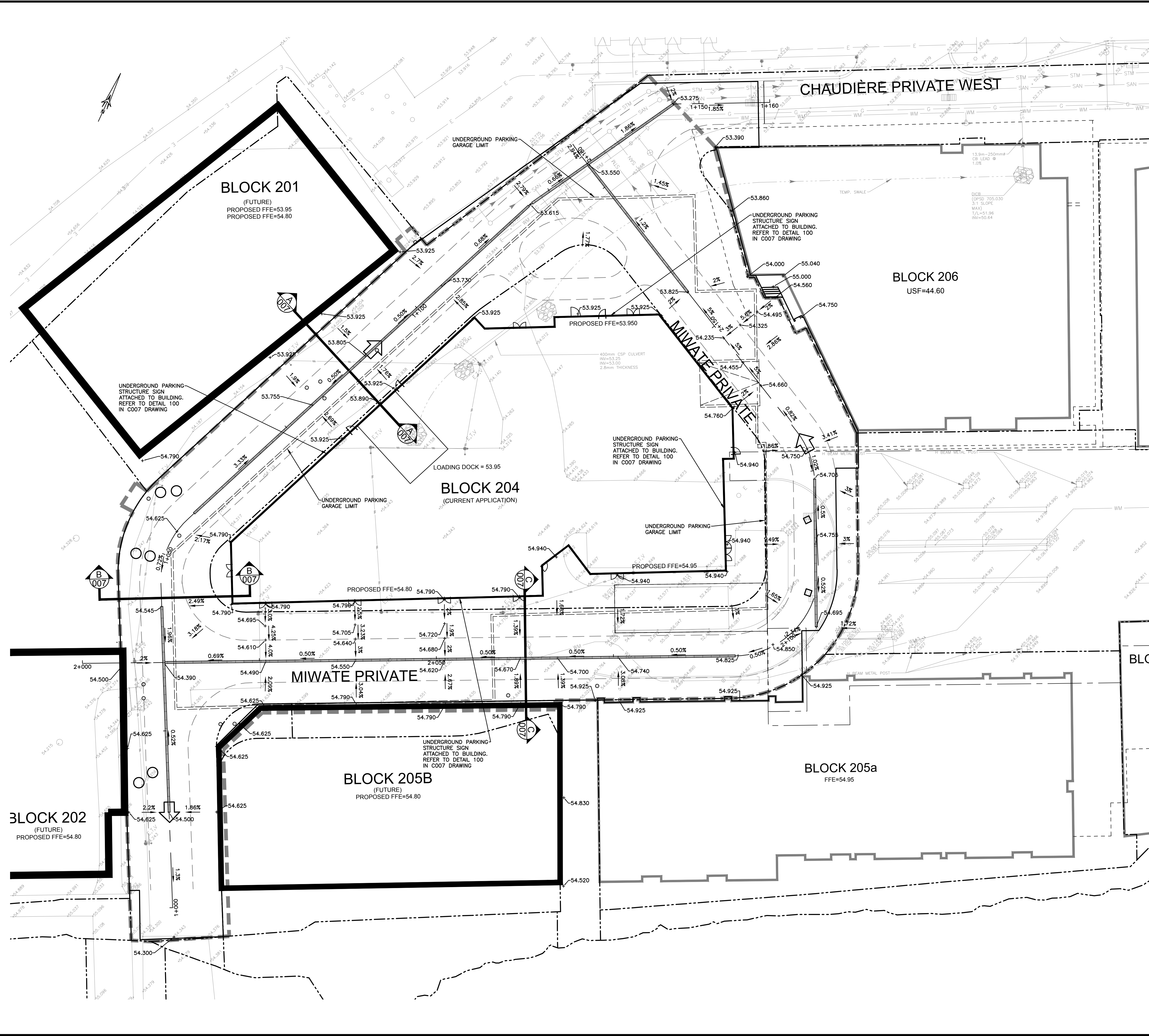
DRAWER: S.C. POGGIOLI
DESIGNER: J. SAUVÉ
APPROVER: A. CHAUMONT
PROJECT No.: A000931
SHEET No.: 3 of 11

SCALE: 1:250
DATE: 2022/03/14
APPROVER: A. CHAUMONT
DRAWING No.: C003



050 STORM DRAIN INLET PROTECTION
 SCALE: NTS

TITLE BLOCK 2438 VERT ENG 3.0
 PRINT DATE: 2023/03/14 / PAPER SIZE: A0
 PATH: Z:\Cma-CI\01\01\Projects\A000931_Zbu_Block 7_Ottawa\400_Drafting\400_Civic-4_Grading.dwg / LAYOUT: C004



EXISTING

- WM WATERMAIN
- SAN SANITARY SEWER
- STM STORM SEWER
- D DRAIN
- G GAS LINE (APPROX. LOC.)
- U UNDERGROUND TELEPHONE (APPROX. LOC.)
- CA UNDERGROUND TRAFFIC CABLE (APPROX. LOC.)
- F FENCE
- E UNDERGROUND ELECTRICITY (APPROX. LOC.)
- OW OVERHEAD WIRES

PROPOSED

- LOT LINE
- RIGHT-OF-WAY LIMITS
- EASEMENT
- TOP OF SLOPE
- DITCH CENTER
- BOTTOM OF SLOPE
- CATCHBASIN
- MANHOLE/CATCHBASIN
- MANHOLE
- FIRE HYDRANT
- VALVE
- REDUCER
- TEE
- VALVE CHAMBER
- PRIVATE UTILITIES (WATERMAIN)
- NATURAL GAS VALVE
- SIGN
- STOP SIGN
- TRAFFIC LIGHT
- ELECTRICITY POLE
- TELEPHONE POLE
- ELECT. TEL. STREET LIGHT POLE
- ELECT. TEL. TRANSFORMER POLE
- PRIVATE STREET LIGHT
- ELECTRICITY MANHOLE
- TELEPHONE MANHOLE
- SURVEY STATION
- ELEVATION + 99,000
- BOREHOLE (LOC. APPROX.)
- OVERLAND FLOW
- TRENCH DRAIN
- WORK LIMIT
- UNDERGROUND PARKING GARAGE LIMIT

ABBREVIATIONS

- STM → STORM
- SAN → SANITARY
- WM → WATERMAIN
- WTR → WATER
- INV → INVERT
- MH → MANHOLE
- CB → CATCHBASIN
- TL → TOP OF LID
- OBV → OVERT
- FFE → FINISHED FLOOR ELEVATION
- BLDG → BUILDING
- SERV → SERVICE

1:250 0 2.5 5 10 15m

No.	Date	Description	By
4	FEB 03, 2023	ISSUED FOR ECA	A.C.
3	NOV 21, 2022	ISSUED FOR SITE PLAN APPLICATION	A.C.
2	AUG 31, 2022	ISSUED FOR SITE PLAN APPLICATION	A.C.
1	APR. 18, 2022	ISSUED FOR SITE PLAN APPLICATION	A.C.

STAMPS

DESIGNED BY

APPROVED BY

CIMA+

CLIENT:
 DREAM UNLIMITED
 30 ADELAÏDE STREET EAST
 SUITE 301
 TORONTO, ON, M5C 3H1
 613-219-2722
ZIBI (Project Address)
 310 Miwate Private
 OTTAWA, ONTARIO
 K1R 0E1

PROJECT NAME:
 ZIBI ONTARIO
 BLOCK 204
 315 PRIVE MIWATE PRIVATE,
 CHAUDIÈRE ISLAND
 OTTAWA, ONTARIO

SHEET TITLE:
 GRADE CONTROL AND
 DRAINAGE PLAN

DISCIPLINE:
 CIVIL

DRAWER: S.C. POGGIOLI	SCALE: 1:250
DESIGNER: J. SAUVÉ	DATE: 2022/03/14
APPROVER: A. CHAUMONT	APPROVER: A. CHAUMONT
PROJECT NO.: A000931	DRAWING NO.: C004
SHEET NO.: 5 of 11	

NOTE OF CAUTION

THE GEODETIC COORDINATES OF EVERY ITEM INCLUDED AS PART OF THIS DOCUMENT ARE IN NAD83 - ORIGINAL / MTM - REFERENCE SYSTEM AND HAVE NO LEGAL VALUE. THE SITE LAYOUT MUST BE COMPLETED USING THE OFFICIAL BENCHMARKS OF AN ACCREDITED LAND SURVEYOR IN THE NAD83 - ORIGINAL / MTM - REFERENCE SYSTEM.

THE UNDERGROUND FEATURES AND INFORMATION THAT APPEAR ON THE DRAWINGS WERE OBTAINED FROM THE PUBLIC UTILITY COMPANIES AND/OR FROM THE CITY EACH RESPECTIVELY.

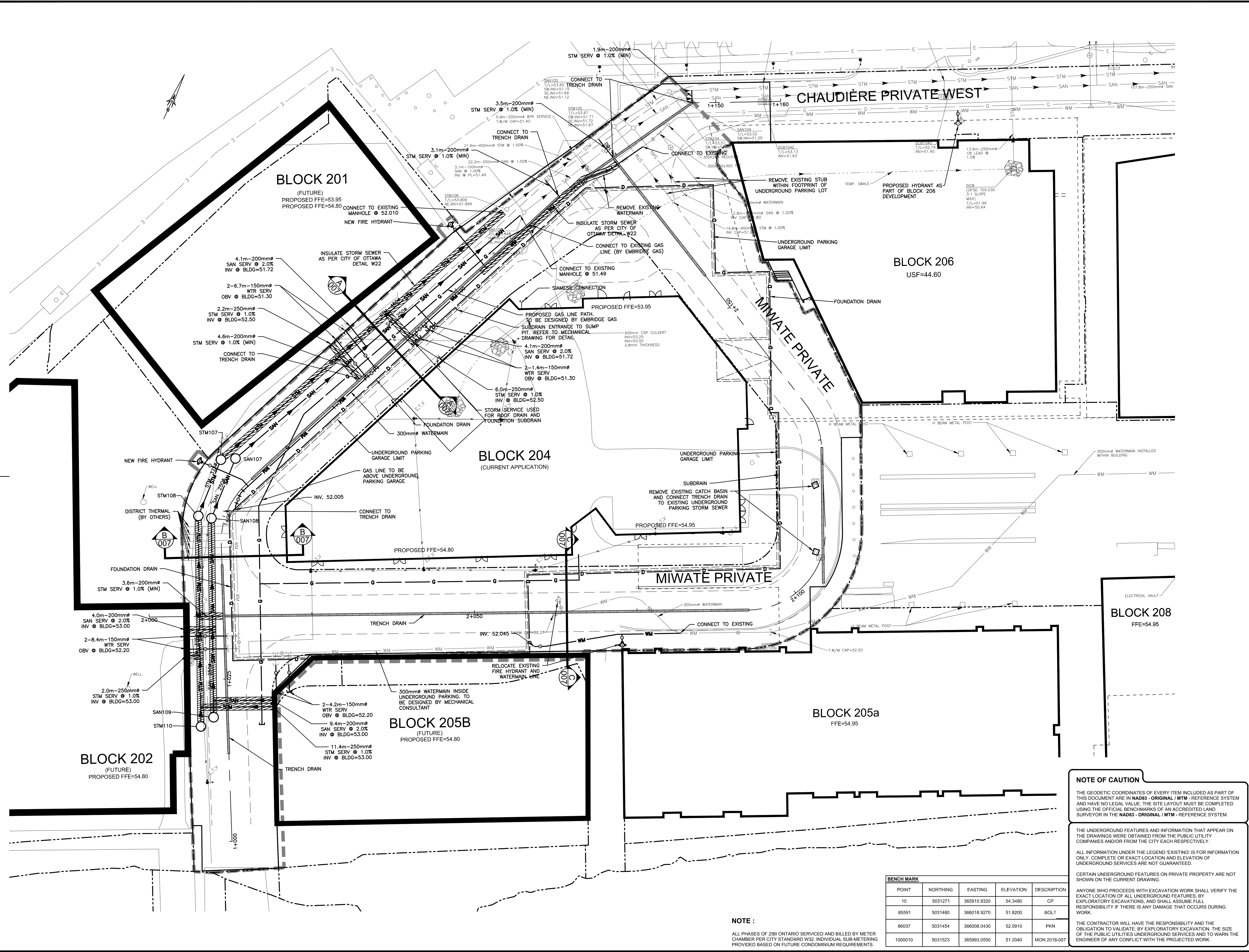
ALL INFORMATION UNDER THE LEGEND 'EXISTING' IS FOR INFORMATION ONLY. COMPLETE OR EXACT LOCATION AND ELEVATION OF UNDERGROUND SERVICES ARE NOT GUARANTEED.

CERTAIN UNDERGROUND FEATURES ON PRIVATE PROPERTY ARE NOT SHOWN ON THE CURRENT DRAWING.

ANYONE WHO PROCEEDS WITH EXCAVATION WORK SHALL VERIFY THE EXACT LOCATION OF ALL UNDERGROUND FEATURES, BY EXPLORATORY EXCAVATIONS, AND SHALL ASSUME FULL RESPONSIBILITY IF THERE IS ANY DAMAGE THAT OCCURS DURING WORK.

THE CONTRACTOR WILL HAVE THE RESPONSIBILITY AND THE OBLIGATION TO VALIDATE, BY EXPLORATORY EXCAVATION, THE SIZE OF THE PUBLIC UTILITIES UNDERGROUND SERVICES AND TO WARN THE ENGINEER OF ANY CONFLICT WITH THE PROJECTED WORK.

TITLEBLOCK 24238 VERT ENG 3.0
 PRINT DATE: 2023/03/14 PAPER SIZE: A0
 PATH: Z:\Cma-C\101\Projects\A000931_Zib\B\07_Ottawa400_Drafting\400_Civic-6_Servicing.dwg / LAYOUT: C005



EXISTING		PROPOSED	
WM	WATERMAIN	WM	WATERMAIN
SAN	SANITARY SEWER	SAN	SANITARY SEWER
STM	STORM SEWER	STM	STORM SEWER
D	DRAIN	D	DRAIN
G	GAS LINE (APPROX. LOC.)	G	GAS LINE (APPROX. LOC.)
T	UNDERGROUND TELEPHONE (APPROX. LOC.)	T	UNDERGROUND TELEPHONE (APPROX. LOC.)
CA	UNDERGROUND TRAFFIC CABLE (APPROX. LOC.)	CA	UNDERGROUND TRAFFIC CABLE (APPROX. LOC.)
E	UNDERGROUND ELECTRICITY (APPROX. LOC.)	E	UNDERGROUND ELECTRICITY (APPROX. LOC.)
OT	OVERHEAD WIRES	OT	OVERHEAD WIRES
RL	RIGHT-OF-WAY LIMITS	RL	RIGHT-OF-WAY LIMITS
ES	EASEMENT	ES	EASEMENT
TS	TOP OF SLOPE	TS	TOP OF SLOPE
BS	BOTTOM OF SLOPE	BS	BOTTOM OF SLOPE
CB	CATCHBASIN	CB	CATCHBASIN
MCB	MANHOLE/CATCHBASIN	MCB	MANHOLE/CATCHBASIN
MH	MANHOLE	MH	MANHOLE
FH	FIRE HYDRANT	FH	FIRE HYDRANT
V	VALVE	V	VALVE
R	REDUCER	R	REDUCER
T	TEE	T	TEE
VC	VALVE CHAMBER	VC	VALVE CHAMBER
PGV	PRIVATE UTILITIES (WATERMAIN)	PGV	PRIVATE UTILITIES (WATERMAIN)
NGV	NATURAL GAS VALVE	NGV	NATURAL GAS VALVE
TD	TRENCH DRAIN	TD	TRENCH DRAIN
S	STOP SIGN	S	STOP SIGN
TL	TRAFFIC LIGHT	TL	TRAFFIC LIGHT
EP	ELECTRICITY POLE	EP	ELECTRICITY POLE
TP	TELEPHONE POLE	TP	TELEPHONE POLE
ESLP	ELECT-STREET LIGHT POLE	ESLP	ELECT-STREET LIGHT POLE
ETSP	ELECT-TEL-TURNFORMER POLE	ETSP	ELECT-TEL-TURNFORMER POLE
PSL	PRIVATE STREET LIGHT	PSL	PRIVATE STREET LIGHT
EMH	ELECTRICITY MANHOLE	EMH	ELECTRICITY MANHOLE
TMH	TELEPHONE MANHOLE	TMH	TELEPHONE MANHOLE
WS	SURVEY STATION	WS	SURVEY STATION
WI	WATERMAIN INSULATION	WI	WATERMAIN INSULATION
UGO	UNDERGROUND PARKING GARAGE OUTLINE	UGO	UNDERGROUND PARKING GARAGE OUTLINE
BO	BOREHOLE (LOC. APPROX.)	BO	BOREHOLE (LOC. APPROX.)
WL	WORK LIMIT	WL	WORK LIMIT

1:250

No.	Date	Description	By
4	FEB 03, 2023	ISSUED FOR ECA	A.C.
3	NOV 21, 2022	ISSUED FOR SITE PLAN APPLICATION	A.C.
2	AUG 31, 2022	ISSUED FOR SITE PLAN APPLICATION	A.C.
1	APR 18, 2022	ISSUED FOR SITE PLAN APPLICATION	A.C.

DESIGNED BY:

APPROVED BY:

ENGINEER: **CIMA+**

CLIENT: DREAM UNLIMITED
 30 ADELAIDE STREET EAST
 SUITE 301
 TORONTO, ON, M5C 3H1
 613-219-2722

ZIBI (Project Address)
 310 Miwate Private
 OTTAWA, ONTARIO
 K1R 0E1

PROJECT NAME: ZIBI ONTARIO
 BLOCK 204
 315 PRIVE MIWATE PRIVATE,
 CHAUDIERE ISLAND
 OTTAWA, ONTARIO

SHEET TITLE: **SITE SERVICING LAYOUT**

DISCIPLINE: **CIVIL**

DRAWER: S.C. POGGIOLI	SCALE: 1:250
DESIGNER: J. SALUVE	DATE: 2022/03/14
APPROVER: A. CHALOMONT	APPROVER: A. CHALOMONT
PROJECT No.: A000931	DRAWING No.: C005
SHEET No.: 7 of 11	

NOTE OF CAUTION

THE GEODETIC COORDINATES OF EVERY ITEM INCLUDED AS PART OF THIS DOCUMENT ARE IN NAD83 - ORIGINAL / MTM - REFERENCE SYSTEM AND HAVE NO LEGAL VALUE. THE SITE LAYOUT MUST BE COMPLETED USING THE OFFICIAL BENCHMARKS OF AN ACCREDITED LAND SURVEYOR IN THE NAD83 - ORIGINAL / MTM - REFERENCE SYSTEM.

THE UNDERGROUND FEATURES AND INFORMATION THAT APPEAR ON THE DRAWINGS WERE OBTAINED FROM THE PUBLIC UTILITY COMPANIES AND/OR FROM THE CITY EACH RESPECTIVELY.

ALL INFORMATION UNDER THE LEGEND 'EXISTING' IS FOR INFORMATION ONLY. COMPLETE OR EXACT LOCATION AND ELEVATION OF UNDERGROUND SERVICES ARE NOT GUARANTEED.

CERTAIN UNDERGROUND FEATURES ON PRIVATE PROPERTY ARE NOT SHOWN ON THE CURRENT DRAWING.

ANYONE WHO PROCEEDS WITH EXCAVATION WORK SHALL VERIFY THE EXACT LOCATION OF ALL UNDERGROUND FEATURES, BY EXPLORATORY EXCAVATIONS, AND SHALL ASSUME FULL RESPONSIBILITY IF THERE IS ANY DAMAGE THAT OCCURS DURING WORK.

THE CONTRACTOR WILL HAVE THE RESPONSIBILITY AND THE OBLIGATION TO VALIDATE, BY EXPLORATORY EXCAVATION, THE SIZE OF THE PUBLIC UTILITIES UNDERGROUND SERVICES AND TO WARN THE ENGINEER OF ANY CONFLICT WITH THE PROJECTED WORK.

BENCH MARK

POINT	NORTHING	EASTING	ELEVATION	DESCRIPTION
10	5031271	365915.9320	54.3480	CP
85591	5031480	366018.9270	51.8200	BOLT
88037	5031454	366008.0430	52.0910	PKN
1000010	5031523	365903.0550	51.2040	MON 2018-007

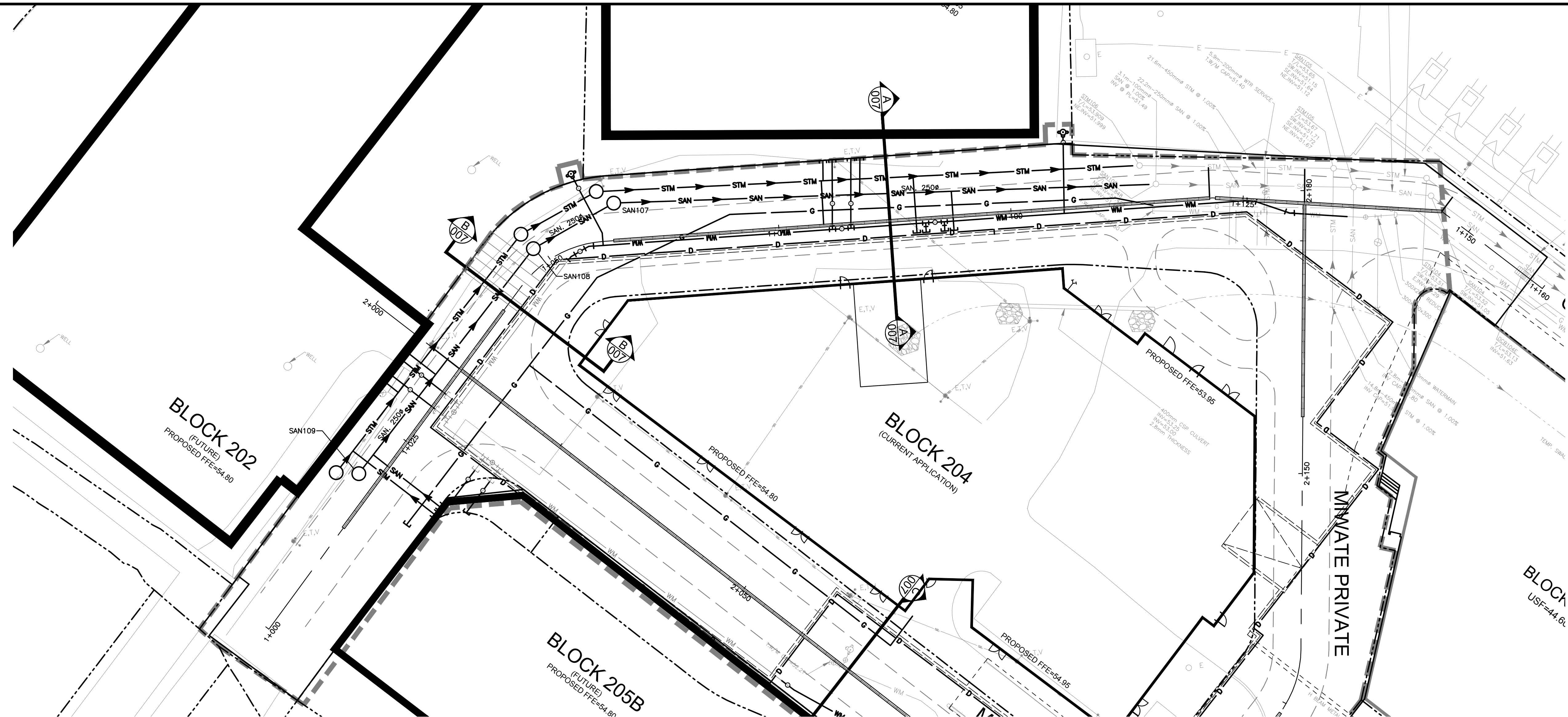
NOTE:

ALL PHASES OF ZIBI ONTARIO SERVICED AND BILLED BY METER CHAMBER PER CITY STANDARD W32. INDIVIDUAL SUB-METERING PROVIDED BASED ON FUTURE CONDOMINIUM REQUIREMENTS.

TITLE BLOCK 24068 VERT ENG 3.0

PRINT DATE: 2023/03/14 PAPER SIZE: A0

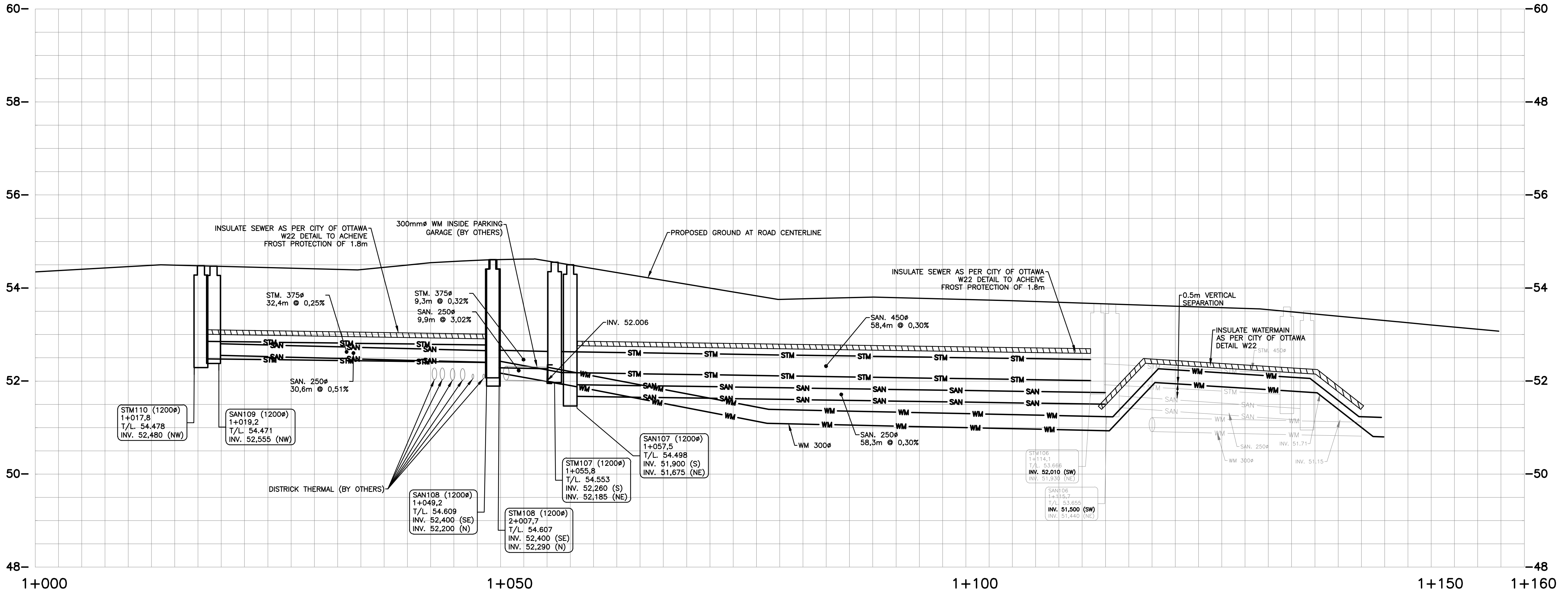
PATH: Z:\Cma-C\01001_P\Project\A000931_Z01_Bloc 7 - Ottawa\A001_Drafting\480_Civic-3_Servicing.dwg / LAYOUT: C006A



EXISTING	WATERMAIN	PROPOSED
WM	WATERMAIN	WM
SAN	SANITARY SEWER	SAN
STM	STORM SEWER	STM
D	DRAIN	D
G	GAS LINE (APPROX. LOC.)	G
T	UNDERGROUND TELEPHONE (APPROX. LOC.)	T
CA	UNDERGROUND TRAFFIC CABLE (APPROX. LOC.)	CA
E	UNDERGROUND ELECTRICITY (APPROX. LOC.)	E
	OVERHEAD WIRES	
	LOT LINE	
	RIGHT-OF-WAY LIMITS	
	EASEMENT	
	TOP OF SLOPE	
	DITCH CENTER	
	BOTTOM OF SLOPE	
	CATCHBASIN	
	MANHOLE	
	FIRE HYDRANT	
	VALVE	
	REDUCER	
	TEE	
	VALVE CHAMBER	
	PRIVATE UTILITIES (WATERMAIN)	
	NATURAL GAS VALVE	
	TRENCH DRAIN	
	STOP SIGN	
	TRAFFIC LIGHT	
	ELECTRICITY POLE	
	ELECT. TEL. STREET LIGHT POLE	
	ELECT. TEL. TRANSFORMER POLE	
	PRIVATE STREET LIGHT	
	ELECTRICITY MANHOLE	
	TELEPHONE MANHOLE	
	SURVEY STATION	
	WATERMAIN INSULATION	
	UNDERGROUND PARKING	
	GARAGE OUTLINE	
	BORHOLE (LOC. APPROX.)	
	WORK LIMIT	

1:250

No.	Date	Description	By
4	FEB 03, 2023	ISSUED FOR ECA	A.C.
3	NOV 21, 2022	ISSUED FOR SITE PLAN APPLICATION	A.C.
2	AUG. 31, 2022	ISSUED FOR SITE PLAN APPLICATION	A.C.
1	APR. 18, 2022	ISSUED FOR SITE PLAN APPLICATION	A.C.



DESIGNED BY: J.A. SAUVE (Professional Engineer License 100200100, 23-02-03)

APPROVED BY: A. CHAUMONT (Professional Engineer License 90409194, 23-02-03)

CIMA+

CLIENT: DREAM UNLIMITED
30 ADELAIDE STREET EAST
SUITE 301
TORONTO, ON, M5C 3H1
613-219-2722

ZIBI (Project Address)
310 Mivate Private
OTTAWA, ONTARIO
K1R 0E1

PROJECT NAME: ZIBI ONTARIO
BLOCK 204
315 PRIVE MIWATE PRIVATE,
CHAUDIERE ISLAND
OTTAWA, ONTARIO

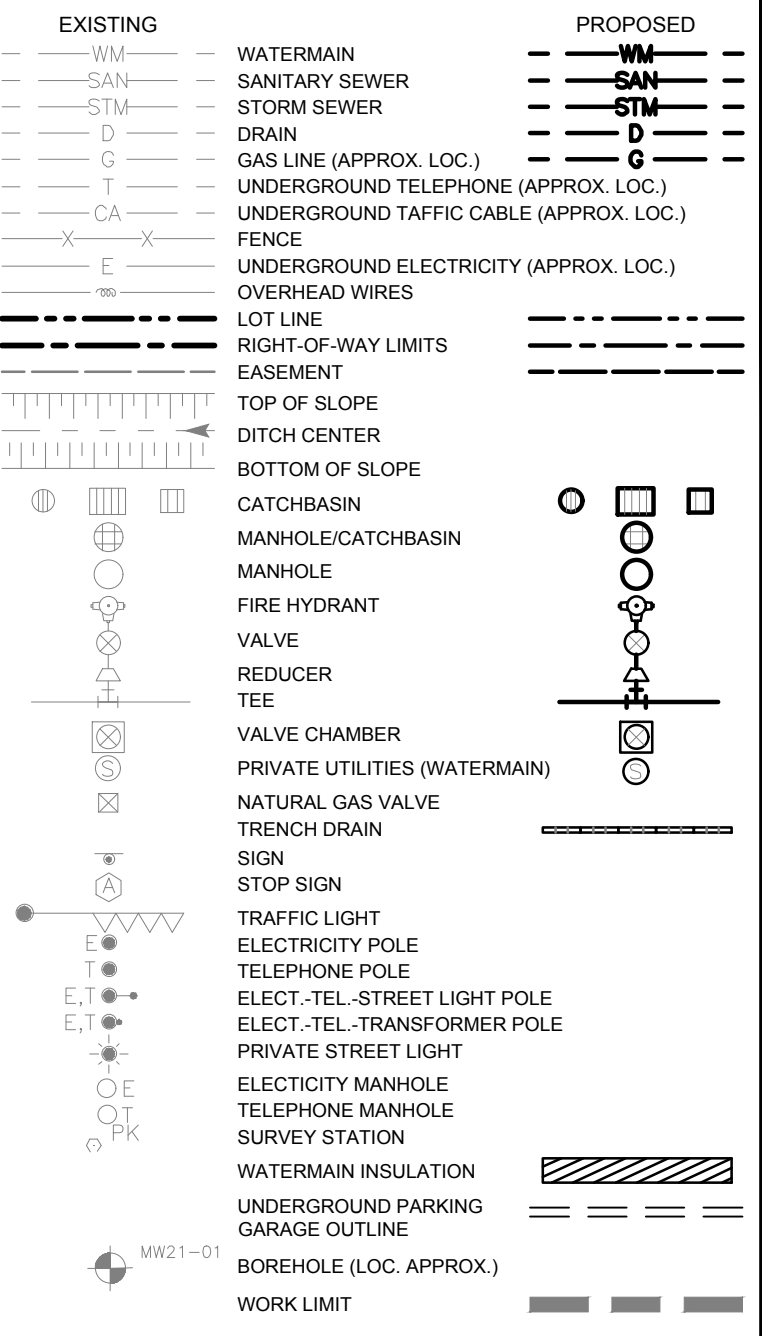
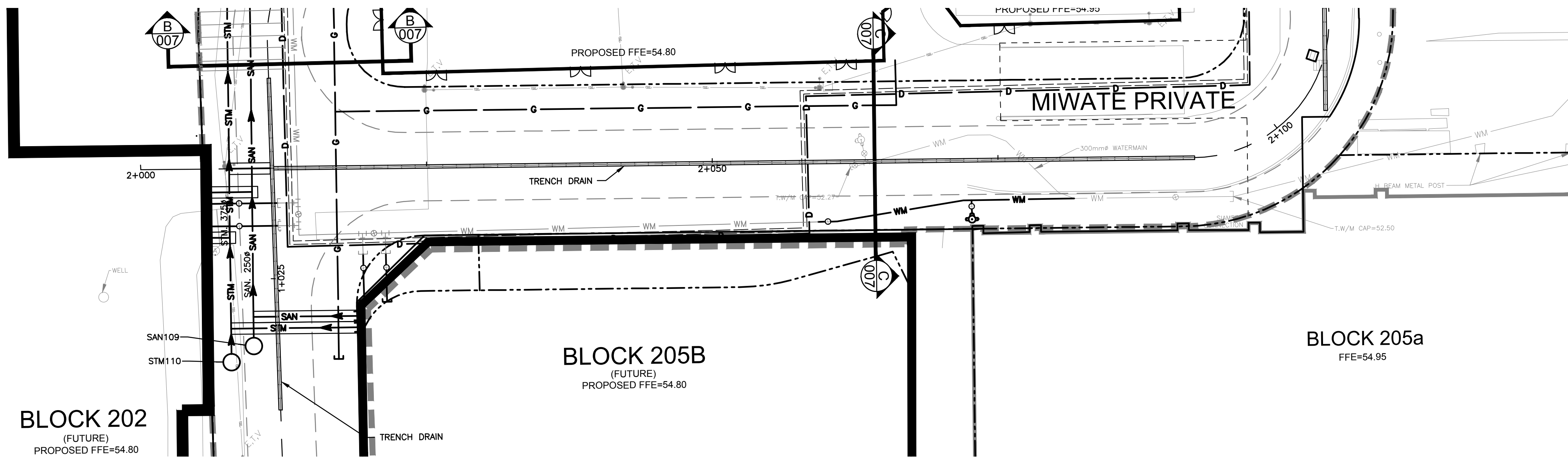
SHEET TITLE: PLAN AND PROFILE
STA. 1+000 TO 1+145

DISCIPLINE: CIVIL

DRAFTER: S.C. POGGIOLI
DESIGNER: J. SAUVE
APPROVER: A. CHAUMONT

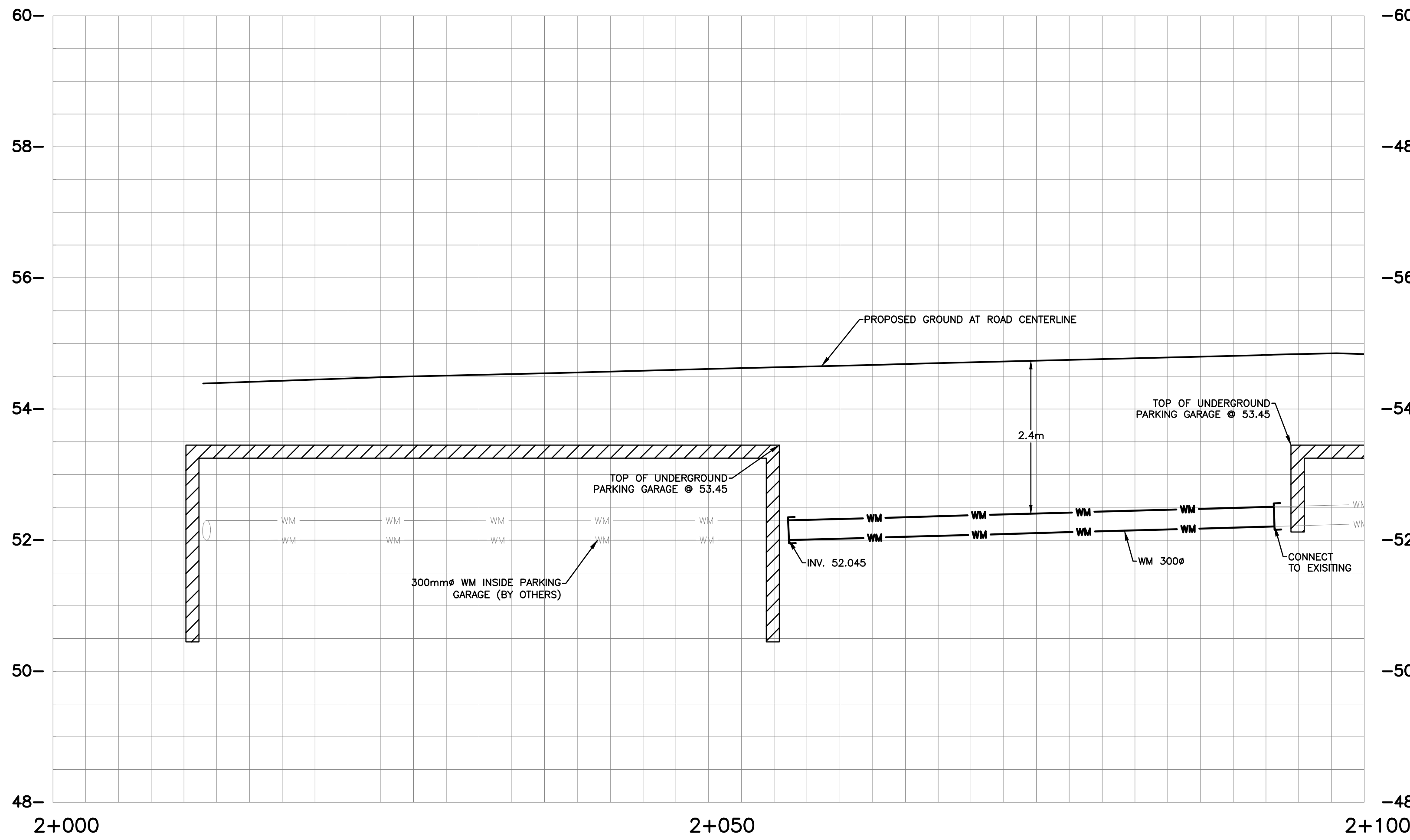
SCALE: H=1:250 V=1:50
DATE: 2022/03/14
APPROVER: A. CHAUMONT

PROJECT No.: A000931
SHEET No.: 8 of 11
DRAWING No.: C006A



ABBREVIATIONS

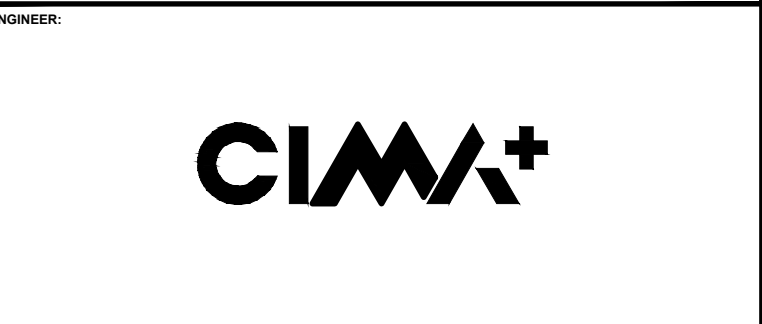
STM	→	STORM
SAN	→	SANITARY
WM	→	WATERMAIN
WTR	→	WATER
INV	→	INVERT
MH	→	MANHOLE
CB	→	CATCHBASIN
T/L	→	TOP OF LID
OBV	→	OBVERT
FFE	→	FINISHED FLOOR ELEVATION
BLDG	→	BUILDING
SERV	→	SERVICE



No.	Date	Description	By
4	FEB 03, 2023	ISSUED FOR ECA	A.C.
3	NOV 21, 2022	ISSUED FOR SITE PLAN APPLICATION	A.C.
2	AUG. 31, 2022	ISSUED FOR SITE PLAN APPLICATION	A.C.
1	APR. 18, 2022	ISSUED FOR SITE PLAN APPLICATION	A.C.

DESIGNED BY: [Signature] APPROVED BY: [Signature]

ENGINEER: [Signature]



CLIENT:
DREAM UNLIMITED
 30 ADELAIDE STREET EAST
 SUITE 301
 TORONTO, ON, M5C 3H1
 613-219-2722

ZIBI (Project Address)
 310 Miwate Private
 OTTAWA, ONTARIO
 K1R 0E1

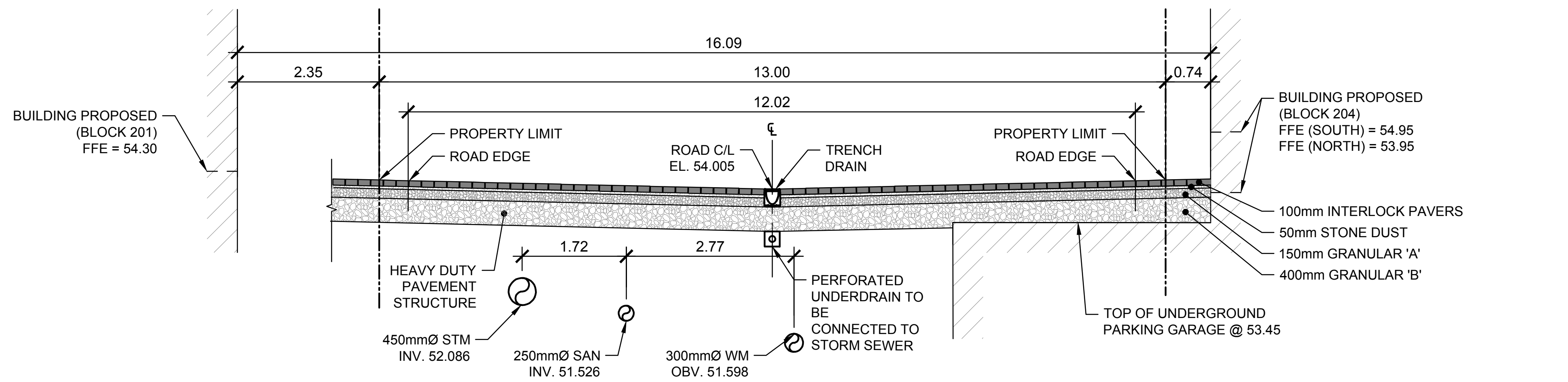
PROJECT NAME:
**ZIBI ONTARIO
 BLOCK 204
 315 PRIVE MIWATE PRIVATE,
 CHAUDIERE ISLAND
 OTTAWA, ONTARIO**

SHEET TITLE:
**PLAN AND PROFILE
 STA. 2+000 TO 2+100**

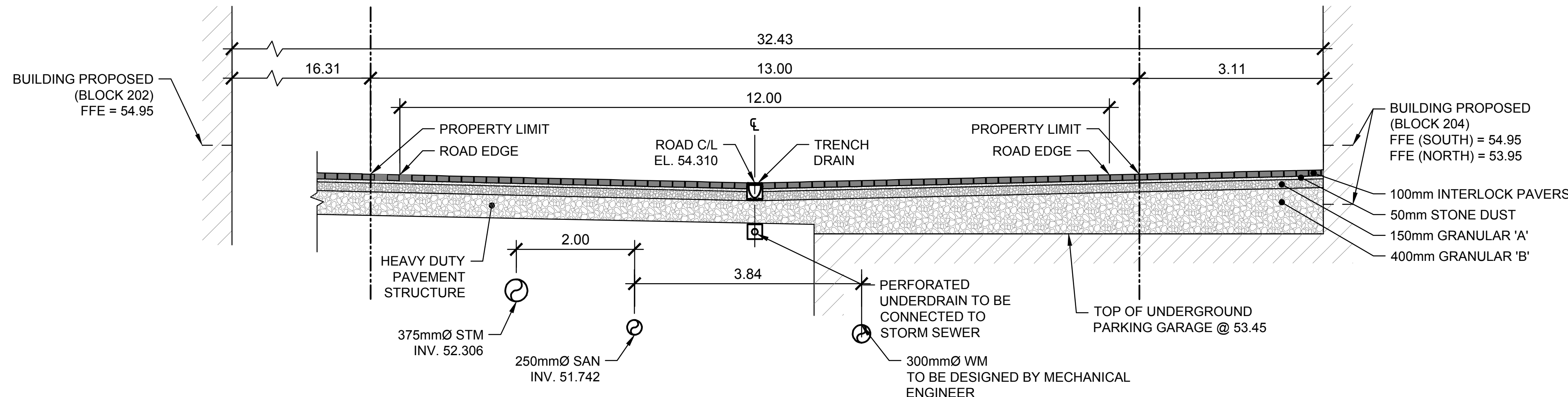
DISCIPLINE: **CIVIL**

DRAFTER: S.C. POGGIOLI	SCALE: H=1:250 V=1:50
DESIGNER: J. SAUVÉ	DATE: 2022/03/14
APPROVER: A. CHAUMONT	APPROVER: A. CHAUMONT
PROJECT No.: A000931	DRAWING No.: C006B
SHEET No.: 9 of 11	

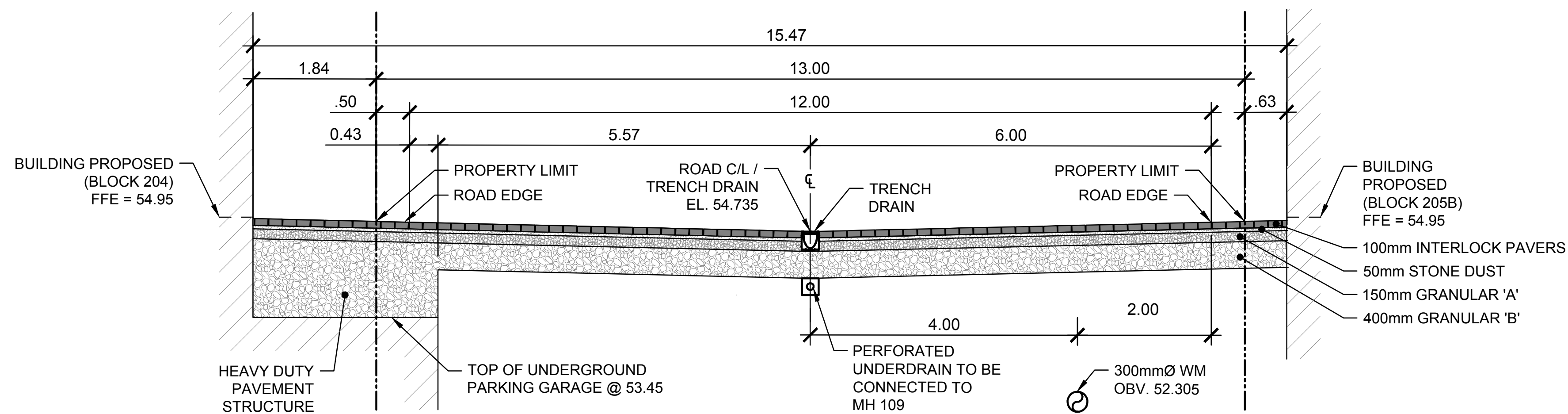
TITLEBLOCK 24x36 VERT ENG 3.0
 PRINT DATE: 2023/03/14 / PAPER SIZE: A1
 PATH: Z:\Cms-C\010\01_P\Projects\A000931_Zib\07_Block 7_Ottawa\001_Drafting\400_Civic-3_Servicing.dwg / LAYOUT: C007



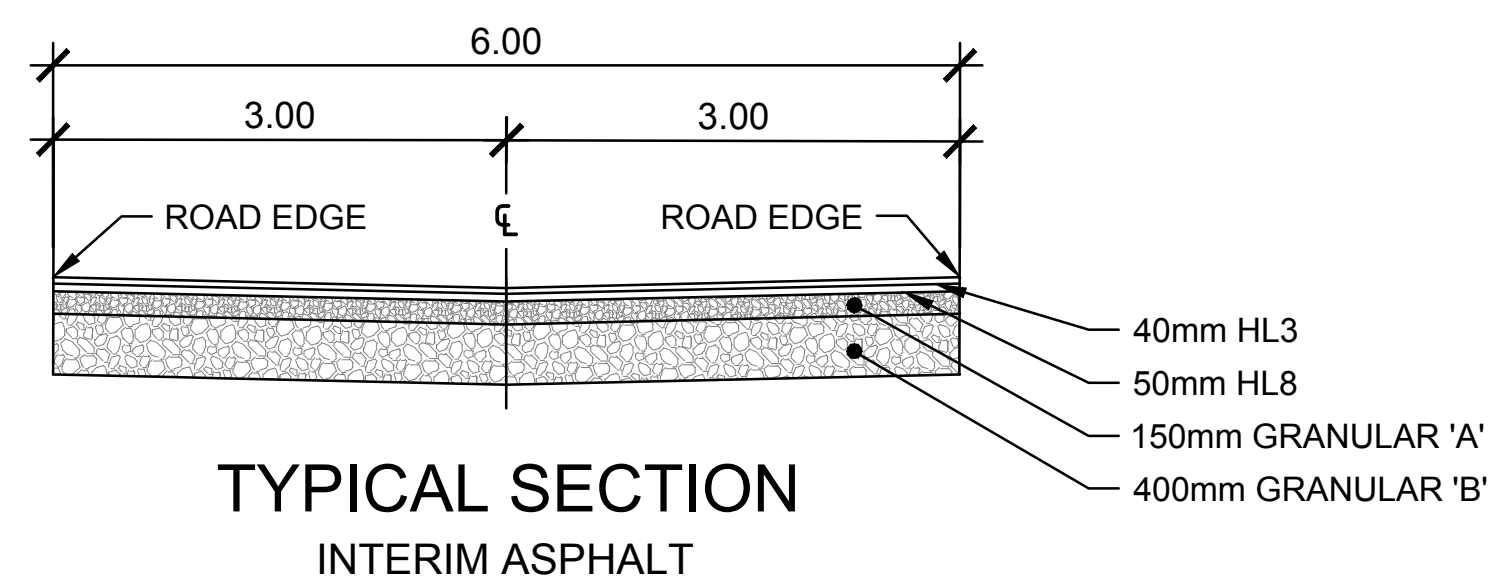
SECTION A-A
 STA 1+091.31



SECTION B-B
 STA 1+048.15



SECTION C-C
 STA 2+056.38



TYPICAL SECTION
 INTERIM ASPHALT



APPROX. 16"W x 24"H



APPROX. 16"W x 6"H

100 UNDERGROUND PARKING STRUCTURE SIGN
 SCALE: NTS

NOTE:
 SIGNS TO BE MANUFACTURED OF METAL OR PLASTIC LAMICOID WITH APPROXIMATE DIMENSION SHOWN IN DETAIL. SIGNS TO BE INSTALLED ON EXTERIOR BUILDING WALL. SIGNS TO BE VISIBLE AND INSTALLED AT A HEIGHT OF 60'- 96" FROM THE GROUND.

No.	Date	Description	By
4	FEB 03, 2023	ISSUED FOR ECA	A.C.
3	NOV 21, 2022	ISSUED FOR SITE PLAN APPLICATION	A.C.
2	AUG. 31, 2022	ISSUED FOR SITE PLAN APPLICATION	A.C.
1	APR. 18, 2022	ISSUED FOR SITE PLAN APPLICATION	A.C.



CLIENT:
 DREAM UNLIMITED
 30 ADELAIDE STREET EAST
 SUITE 301
 TORONTO, ON, M5C 3H1
 613-219-2722
ZIBI (Project Address)
 310 Mivatte Private
 OTTAWA, ONTARIO
 K1R 0E1

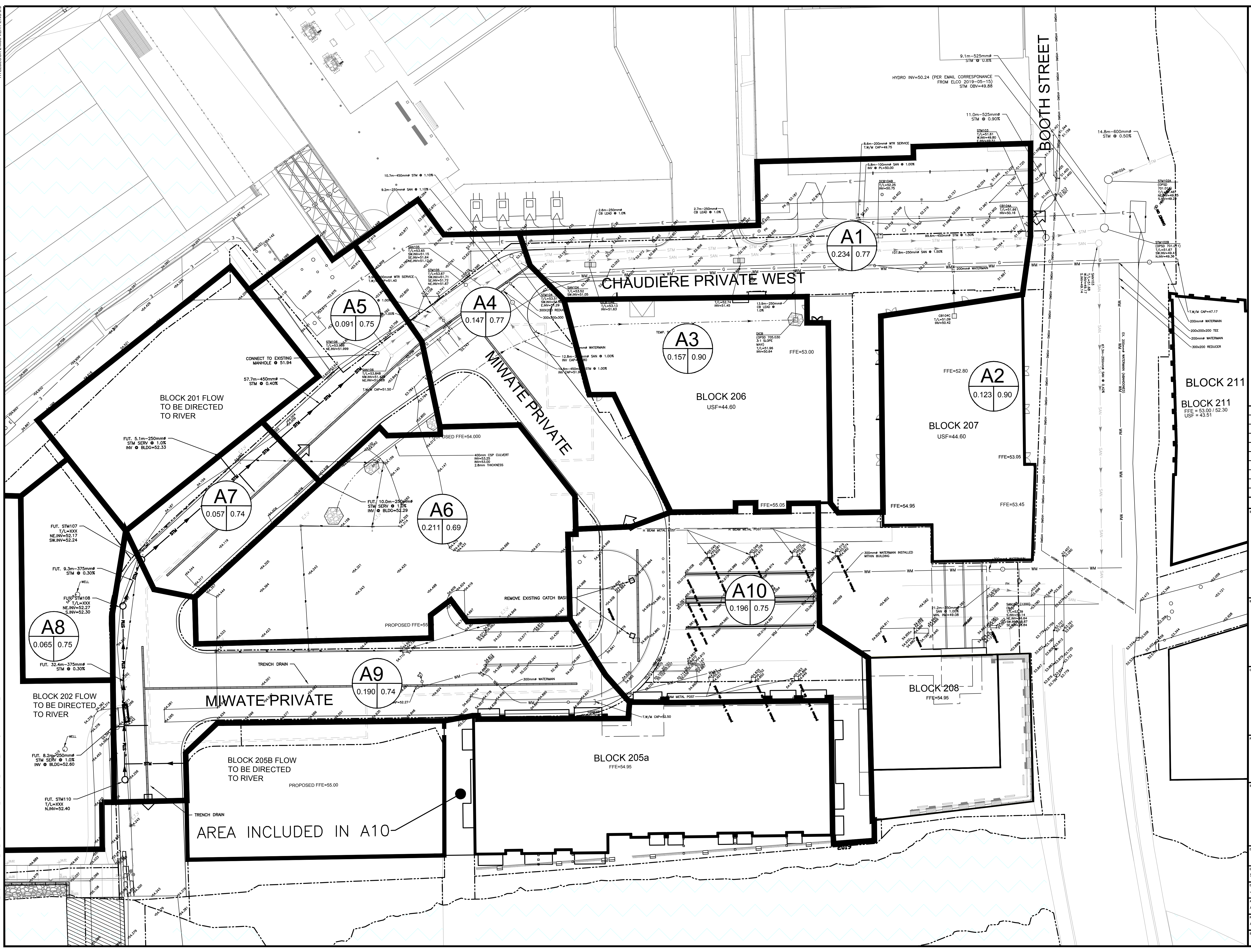
PROJECT NAME:
 ZIBI ONTARIO
 BLOCK 204
 315 PRIVE MIWATE PRIVATE,
 CHAUDIERE ISLAND
 OTTAWA, ONTARIO

SHEET TITLE:
 TYPICAL CROSS SECTIONS
 AND DETAILS

DISCIPLINE:
 CIVIL

DRAFTER: S.C. POGGIOLI	SCALE: 1:50
DESIGNER: J. SAUVÉ	DATE: 2022/03/14
APPROVER: A. CHAUMONT	APPROVER: A. CHAUMONT
PROJECT No.: A000931	DRAWING No.: C007
SHEET No.: 10 of 11	

TITLE LOCK 2438 VERT ENG 3.0
 PRINT DATE: 2023/03/14 PAPER SIZE: A0
 PATH: Z:\C:\C:\C:\C:\C\Projects\A000931_28u_Block 7_Ottawa400_Drafting\400_Civic-4_SWM.dwg / LAYOUT: C008_SWM



EXISTING		PROPOSED	
WM	WATERMAIN	WM	WATERMAIN
SS	SANITARY SEWER	SS	SANITARY SEWER
STM	STORM SEWER	STM	STORM SEWER
D	DRAIN	D	DRAIN
G	GAS LINE (APPROX. LOC.)	G	GAS LINE (APPROX. LOC.)
T	UNDERGROUND TELEPHONE (APPROX. LOC.)	T	UNDERGROUND TELEPHONE (APPROX. LOC.)
CA	UNDERGROUND TRAFFIC CABLE (APPROX. LOC.)	CA	UNDERGROUND TRAFFIC CABLE (APPROX. LOC.)
E	OVERHEAD WIRES	E	OVERHEAD WIRES
	UNDERGROUND ELECTRICITY (APPROX. LOC.)		UNDERGROUND ELECTRICITY (APPROX. LOC.)
	FENCE		FENCE
	LOT LINE		LOT LINE
	RIGHT-OF-WAY LIMITS		RIGHT-OF-WAY LIMITS
	EASEMENT		EASEMENT
	TOP OF SLOPE		TOP OF SLOPE
	DITCH CENTER		DITCH CENTER
	BOTTOM OF SLOPE		BOTTOM OF SLOPE
	CATCHBASIN		CATCHBASIN
	MANHOLE/CATCHBASIN		MANHOLE/CATCHBASIN
	MANHOLE		MANHOLE
	FIRE HYDRANT		FIRE HYDRANT
	VALVE		VALVE
	REDUCER		REDUCER
	TEE		TEE
	VALVE CHAMBER		VALVE CHAMBER
	PRIVATE UTILITIES (WATERMAIN)		PRIVATE UTILITIES (WATERMAIN)
	ELEVATION		ELEVATION
	BOREHOLE (LOC. APPROX.)		BOREHOLE (LOC. APPROX.)
	OVERLAND FLOW		OVERLAND FLOW
	TRENCH DRAIN		TRENCH DRAIN
	WORK LIMIT		WORK LIMIT
	UNDERGROUND PARKING		UNDERGROUND PARKING
	GARAGE LIMIT		GARAGE LIMIT

Sub-catchment	A4	0.305	0.69
Area in Hectares			
Coefficient de Ruissellement			
Overland Flow			
Catchment Area Limit			

No.	Date	Description	By
4	FEB 03, 2023	ISSUED FOR ECA	A.C.
3	NOV 21, 2022	ISSUED FOR SITE PLAN APPLICATION	A.C.
2	AUG 31, 2022	ISSUED FOR SITE PLAN APPLICATION	A.C.
1	APR 18, 2022	ISSUED FOR SITE PLAN APPLICATION	A.C.

STAMPS:

DESIGNED BY: J.A. SAUVÉ (PROFESSIONAL ENGINEER, 10020/100, PROVINCE OF ONTARIO)

APPROVED BY: A. CHAUMONT (PROFESSIONAL ENGINEER, 90409194, PROVINCE OF ONTARIO)

ENGINEER: CIM+

CLIENT: DREAM UNLIMITED
 30 ADELAIDE STREET EAST
 SUITE 301
 TORONTO, ON, M5C 3H1
 613-219-2722

ZIBI (Project Address)
 310 Mivatte Private
 OTTAWA, ONTARIO
 K1R 0E1

PROJECT NAME: ZIBI ONTARIO BLOCK 204
 315 PRIVE MIWATTE PRIVATE,
 CHAUDIERE ISLAND
 OTTAWA, ONTARIO

SHEET TITLE: STORMWATER MANAGEMENT PLAN

DISCIPLINE: CIVIL

DRAWN BY: S.C. POGGIOLI
 DESIGNER: J. SAUVÉ
 APPROVER: A. CHAUMONT

SCALE: 1:300
 DATE: 2022/03/14
 APPROVER: A. CHAUMONT

PROJECT No.: A000931
 SHEET No.: 11 of 11

C008