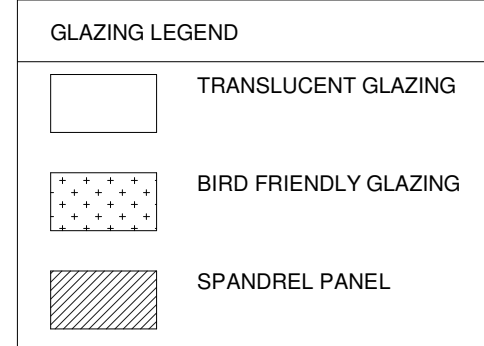
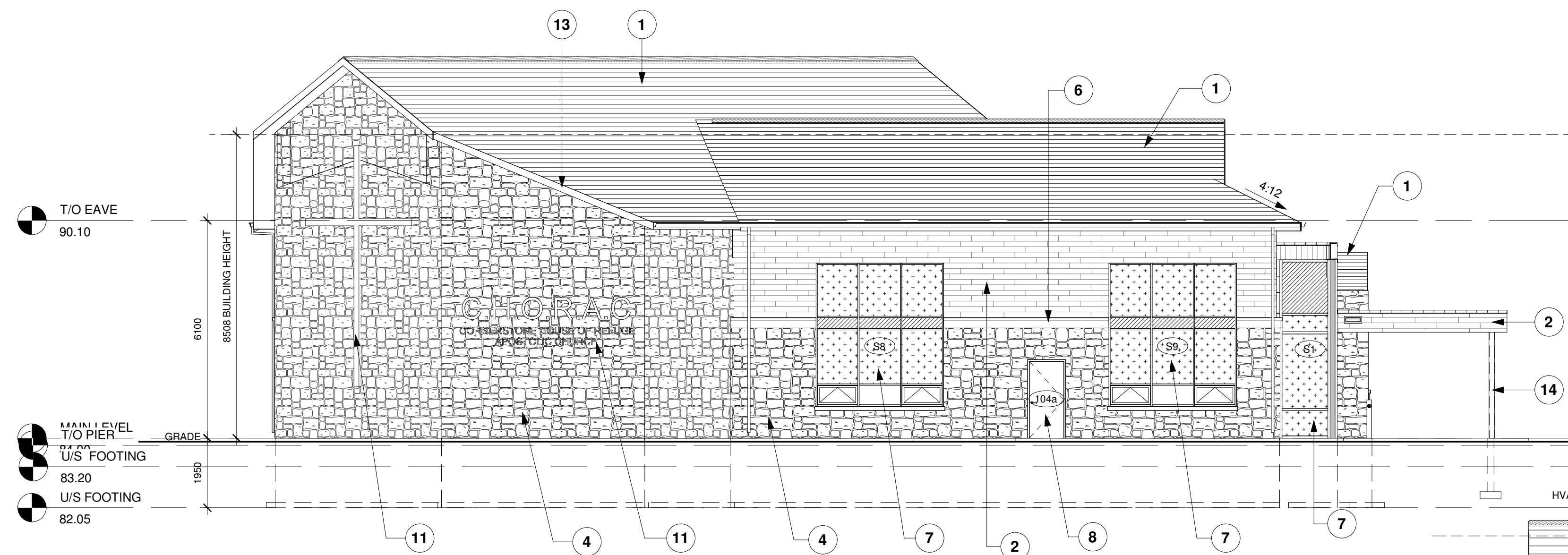
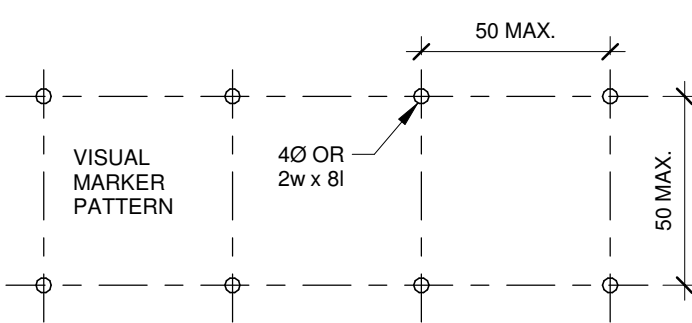


BIRD-SAFE GLAZING
 OTTAWA BIRD-SAFE DESIGN GUIDELINES RECOMMENDS
 90% OF GLASS WITHIN THE FIRST 16m OF HEIGHT TO BE
 BIRD-SAFE.
 PROJECT GLASS AREA = 135.08m²
 PROJECT BIRD-SAFE GLASS = 120.55m² = 89%

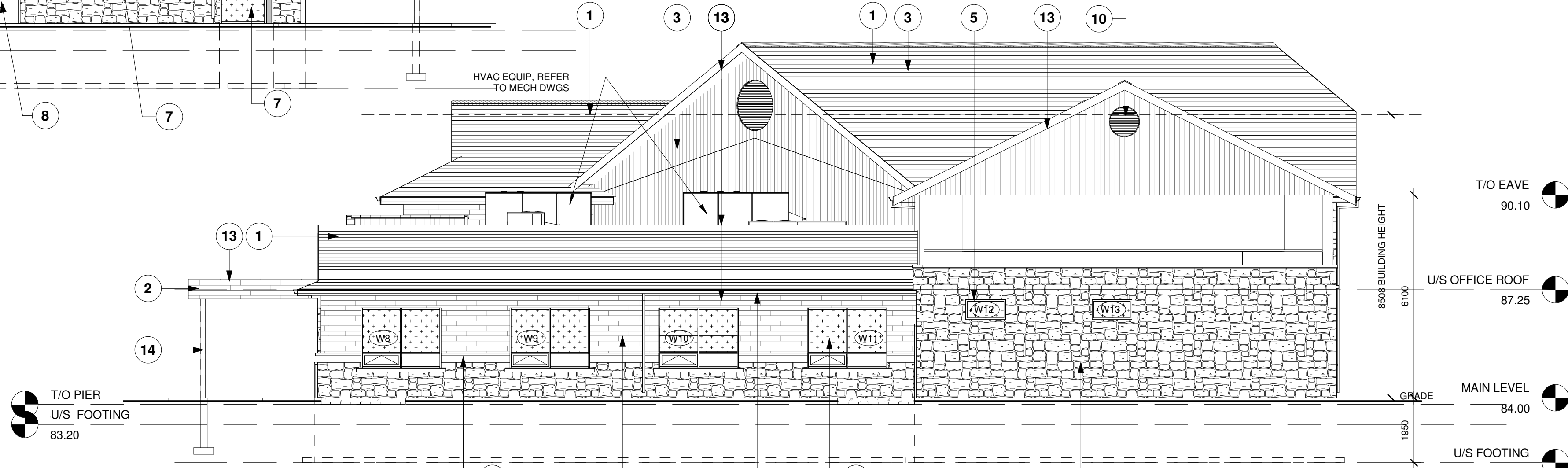


MATERIAL LEGEND

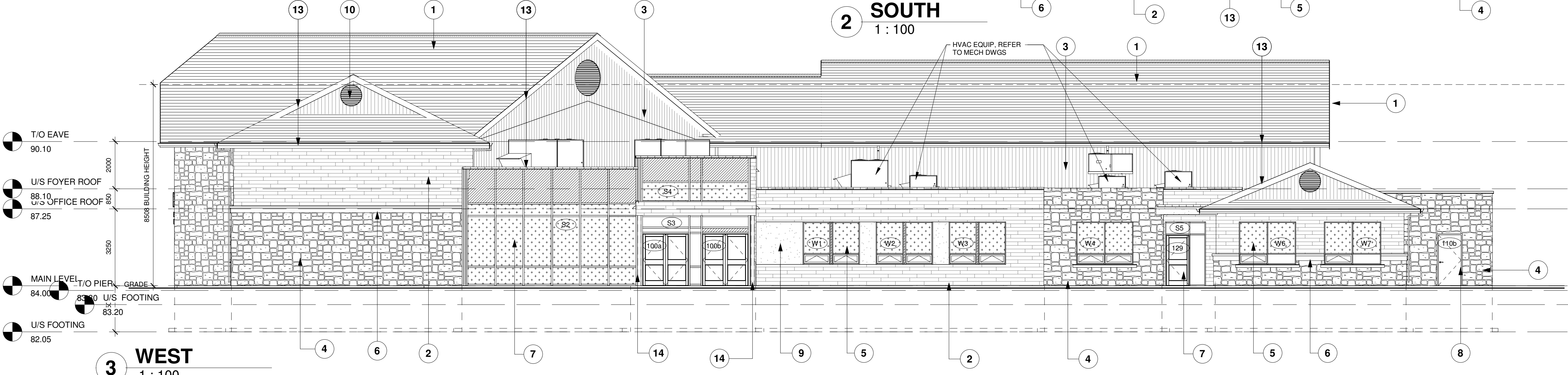
VALUE	MATERIAL DESCRIPTION
1	ASPHALT SHINGLES - TIMBERLINE HD CHARCOAL
2	SIDING - PREFINISHED ALUMINUM PANEL - WOOD GRAIN (WALNUT)
3	SIDING - HARDIE PANEL VERT. SIDING SELECT CEDAR MILL BOARD & BATTEN AND TRIM - MONTEREY TAUPE
4	STONE MASONRY VENEER - PERMACON LAFIT STONE - RANGE NEWPORT GREY
5	CLEAR ANODIZED ALUMINUM WINDOWS CW CLEAR FLOAT DOUBLE GLAZING.
6	PRECAST ARCHITECTURAL STONE TRIM
7	ENTRANCE WINDOWS - WHITE PREFINISHED THERMAL BROKEN ALUMINUM STOREFRONT SYSTEM W/ DOUBLE-GLAZED INSULATED CLEAR GLASS
8	DOORS - HOLLOW METAL INSULATED DOOR & FRAME WHITE
9	STUCCO - CHARCOAL, COLOUR TO MATCH FACIA
10	LOUVERS - FYPON DECORATIVE ROUND LOUVER CHARCOAL
11	SIGNAGE - PREFINISHED ALUMINUM CHARCOAL
12	POURED CONCRETE FOOTINGS & FOUNDATIONS.
13	FASCIA, GUTTER, DOWNSPOUTS & SCOFFIT - PREFINISHED ALUMINUM CHARCOAL
14	PAINTED STEEL COLUMN.



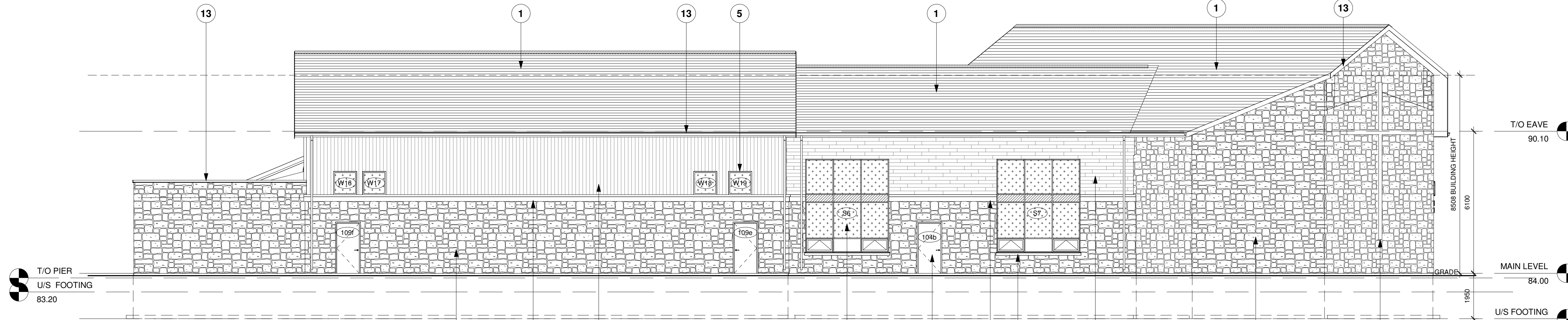
1 NORTH
1 : 100



2 SOUTH
1 : 100



3 WEST
1 : 100

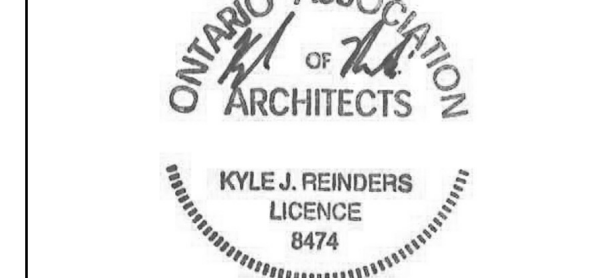


4 EAST
1 : 100

no.	revisions	date	init.
2	RE-ISSUED FOR SPA	2023-01-27	KR/ PF
1	RE-ISSUED FOR SPA	2022-12-09	KR
0	ISSUED FOR SPA	2022-02-28	KR

GENERAL NOTE:
 THESE DRAWINGS ARE COPYRIGHT AND THE PROPERTY OF REINDERS + LAW LTD. THE DRAWINGS MAY NOT BE USED FOR CONSTRUCTION WITHOUT THE PERMISSION OF REINDERS + LAW LTD. AND UNLESS SEALED AND SIGNED BY THE ARCHITECT/ENGINEER REPRODUCTION OF THESE DRAWINGS WITHOUT THE CONSENT OF REINDERS + LAW IS STRICTLY PROHIBITED.
 DO NOT SCALE THESE DRAWINGS. ANY ERROR OR DISCREPANCY IS TO BE REPORTED IMMEDIATELY TO: REINDERS + LAW LTD.

date plotted : 09/25/17 plot scale : 1:1



drawn : LC
 designed : GDR
 reviewed : KR
 date : 09/25/17
 scale : As indicated

project :
 C.H.O.R.A.C.
 2375 St. Laurent Blvd, Ottawa ON
 PLAN #: 18738
 FILE #: D07-12-22-0061

drawing : BUILDING ELEVATIONS



drawing no. : 20037_A200 rev. no. : 2