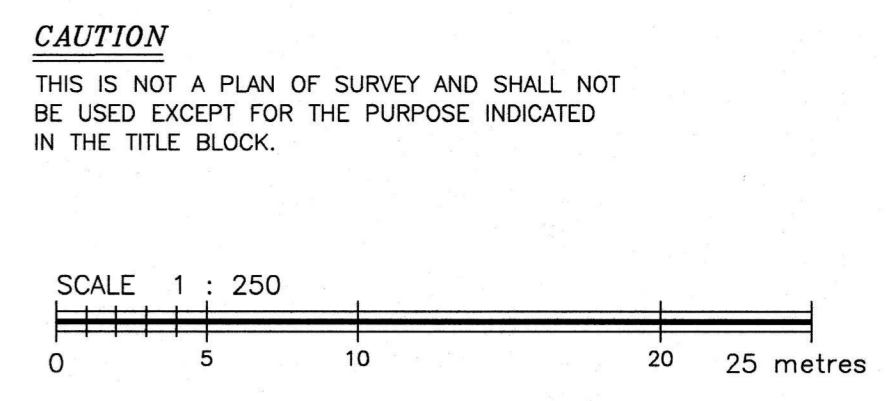
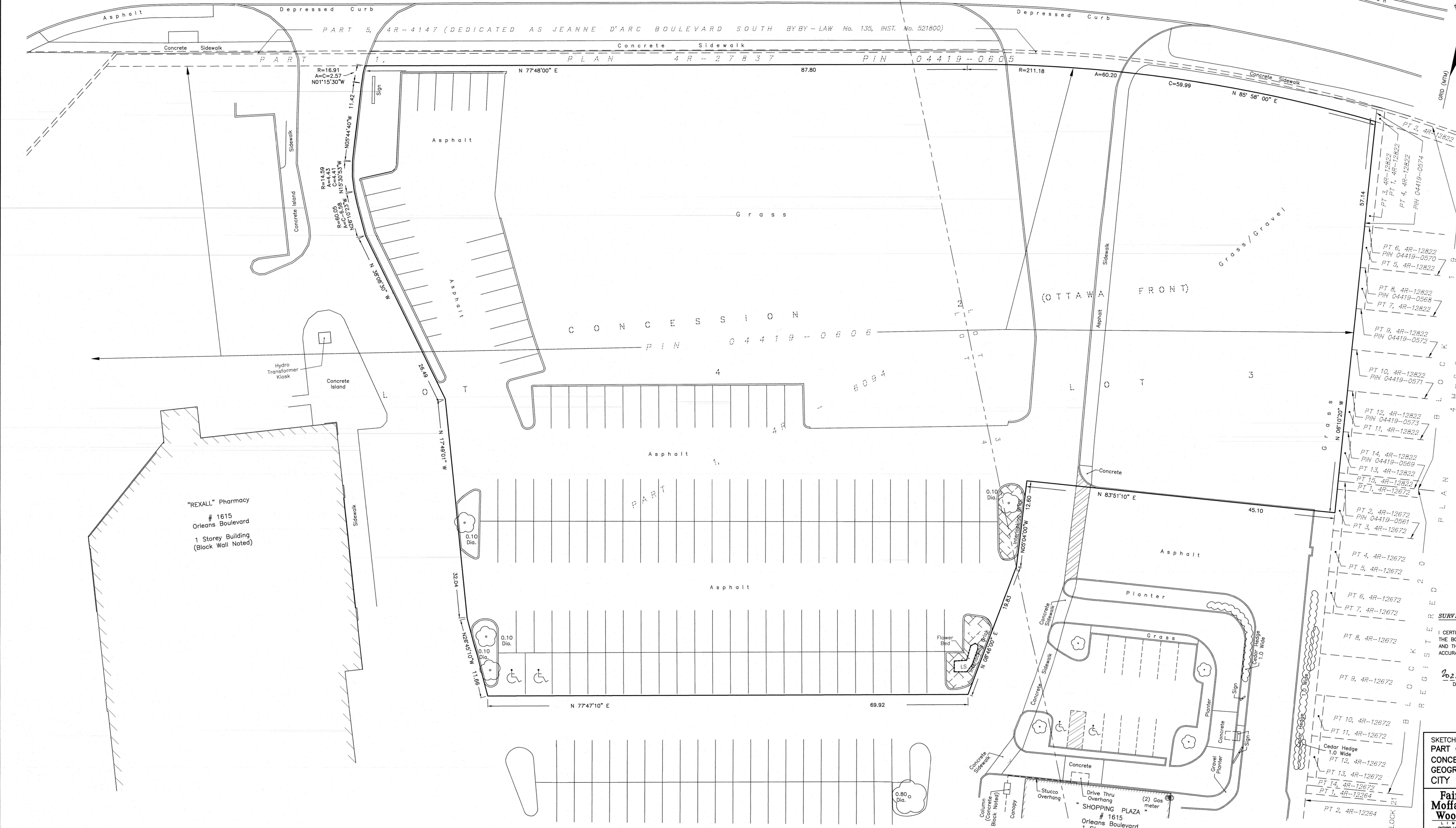


METRIC
DISTANCES AND COORDINATES SHOWN ON THIS PLAN ARE IN METRES
AND CAN BE CONVERTED TO FEET BY DIVIDING BY 0.3048

P I N 1, 4 4 R - 4 1 4 7
(D E D I C A T E D A S J E A N N E D ' A R C B O U L E V A R D S O U T H B Y B Y - L A W N o. 3 O F 1 9 8 7, I N S T. N o. 5 3 1 2 8 6)



CAUTION
THIS IS NOT A PLAN OF SURVEY AND SHALL NOT
BE USED EXCEPT FOR THE PURPOSE INDICATED
IN THE TITLE BLOCK.

- NOTES
1. BEARINGS ARE GRID, DERIVED FROM GPS REAL-TIME NETWORK (RTN) OBSERVATIONS AND ARE REFERRED TO THE CENTRAL MERIDIAN, 76°30'W LONGITUDE MTM ZONE 9, (NAD83 ORIGINAL).
 2. DISTANCES ARE GROUND AND CAN BE CONVERTED TO GRID BY MULTIPLYING BY THE COMBINED SCALE FACTOR 0.999963.
 3. PROPERTY LIMITS SHOWN ARE PER PLAN 4R-27837 AND NOTES OF FAIRHALL, MOFFATT & WOODLAND LIMITED. REF. (175(g)-2(OP)GR)

LEGEND
PIN - PROPERTY IDENTIFIER NUMBER

SURVEYOR'S CERTIFICATE
I CERTIFY THAT:
THE BOUNDARIES OF THE LANDS SHOWN ON THIS SKETCH
AND THEIR RELATIONSHIP TO ADJOINING LANDS HAVE BEEN
ACCURATELY AND CORRECTLY SHOWN.

2022/02/22
DATE
JOHN H. GUTRI
ONTARIO LAND SURVEYOR

SKETCH SHOWING PROPOSED LIMITS OF
PART OF LOTS 3 & 4
CONCESSION 2 (OTTAWA FRONT)
GEOGRAPHIC TOWNSHIP OF GLOUCESTER
CITY OF OTTAWA

**Fairhall
Moffatt &
Woodland**
LIMITED
OTTAWA
Ontario Land Surveyors
Surveying and Land Information Services
100-600 TERRY FOX DRIVE, KANATA, ONTARIO K2L 4R6
TEL: (613) 591-2580 FAX: (613) 591-1495
www.fmw.co.ca

JOB No. AC21700
E 381073, N 5036200
REFERENCE No. 175(k)-2(OP)GR
S:\JHM\AC21700\DWG rplan_ac217.dwg (r/kr)

THIS IS NOT
A VALID COPY
UNLESS EMBOSSED
WITH SEAL

© COPYRIGHT 2022. REPRODUCTION, ALTERATION OR DISTRIBUTION
OF THIS PLAN WITHOUT THE WRITTEN CONSENT OF
FAIRHALL, MOFFATT & WOODLAND LIMITED IS PROHIBITED.