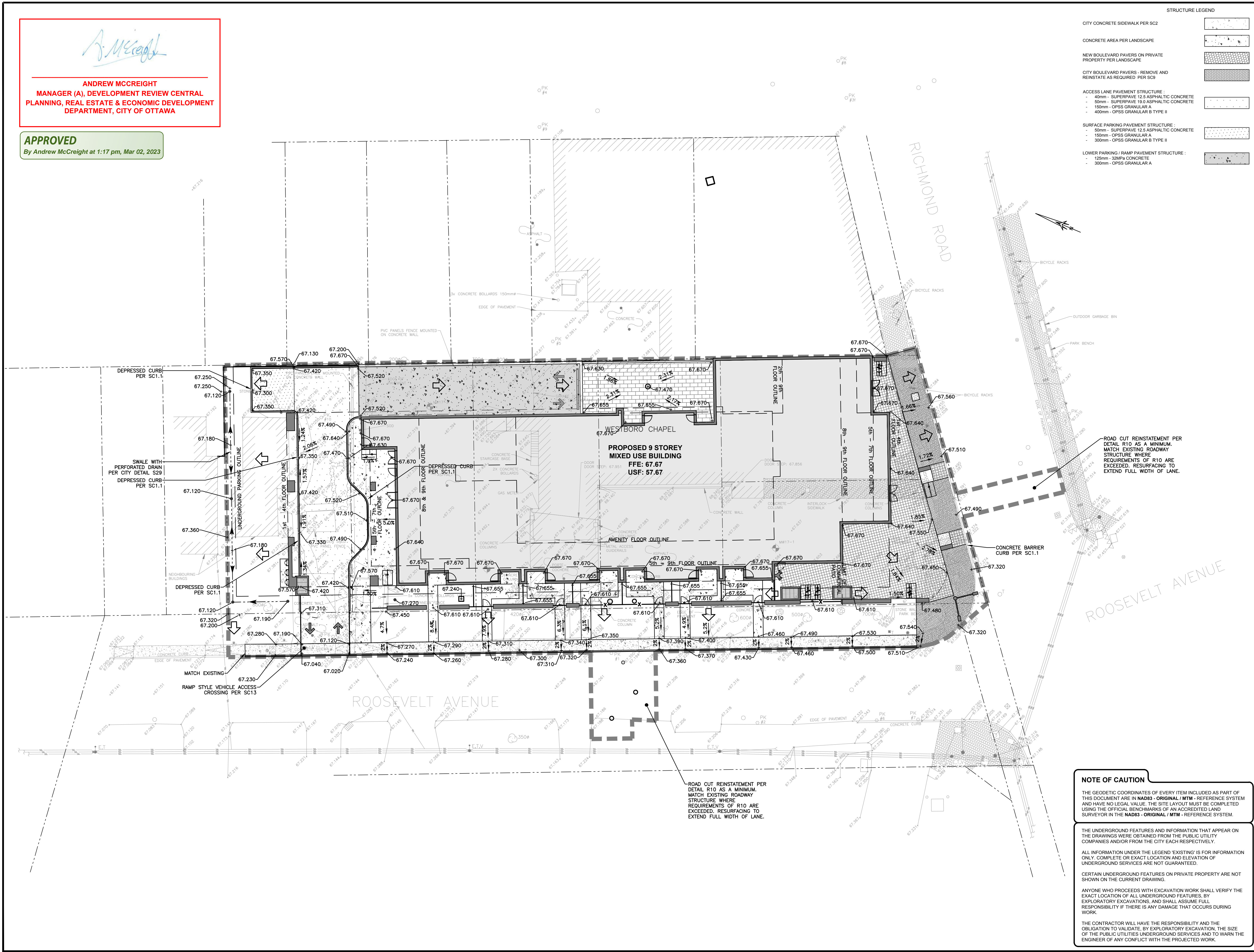


Andrew McCreight
ANDREW MCCREIGHT
 MANAGER (A), DEVELOPMENT REVIEW CENTRAL
 PLANNING, REAL ESTATE & ECONOMIC DEVELOPMENT
 DEPARTMENT, CITY OF OTTAWA

APPROVED
 By Andrew McCreight at 1:17 pm, Mar 02, 2023

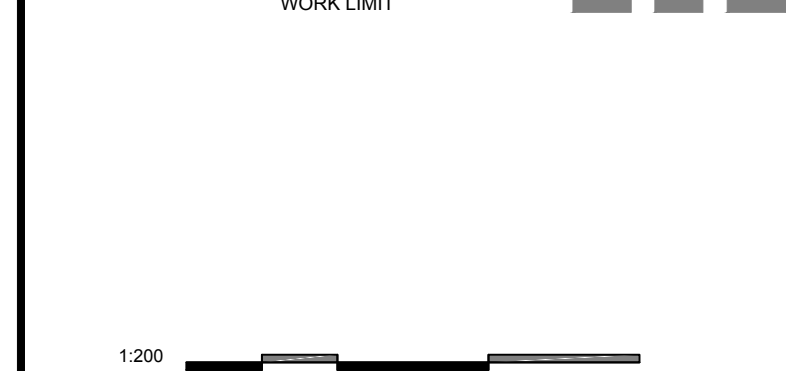


STRUCTURE LEGEND

CITY CONCRETE SIDEWALK PER SC2	[Symbol]
CONCRETE AREA PER LANDSCAPE	[Symbol]
NEW BOULEVARD PAVERS ON PRIVATE PROPERTY PER LANDSCAPE	[Symbol]
CITY BOULEVARD PAVERS - REMOVE AND REINSTATE AS REQUIRED PER SC9	[Symbol]
ACCESS LANE PAVEMENT STRUCTURE: - 40mm - SUPERPAVE 12.5 ASPHALTIC CONCRETE - 50mm - SUPERPAVE 19.0 ASPHALTIC CONCRETE - 150mm - OPSS GRANULAR A - 400mm - OPSS GRANULAR B TYPE II	[Symbol]
SURFACE PARKING PAVEMENT STRUCTURE: - 50mm - SUPERPAVE 12.5 ASPHALTIC CONCRETE - 150mm - OPSS GRANULAR A - 300mm - OPSS GRANULAR B TYPE II	[Symbol]
LOWER PARKING / RAMP PAVEMENT STRUCTURE: - 125mm - 32MPa CONCRETE - 300mm - OPSS GRANULAR A	[Symbol]

EXISTING

[Symbol]	WATERMAIN
[Symbol]	SANITARY SEWER
[Symbol]	STORM SEWER
[Symbol]	DRAIN
[Symbol]	GAS LINE (APPROX. LOC.)
[Symbol]	UNDERGROUND TELEPHONE (APPROX. LOC.)
[Symbol]	UNDERGROUND TRAFFIC CABLE (APPROX. LOC.)
[Symbol]	FENCE
[Symbol]	UNDERGROUND ELECTRICITY (APPROX. LOC.)
[Symbol]	OVERHEAD WIRES
[Symbol]	LOT LINE
[Symbol]	RIGHT-OF-WAY LIMITS
[Symbol]	EASEMENT
[Symbol]	TOP OF SLOPE
[Symbol]	DITCH CENTER
[Symbol]	BOTTOM OF SLOPE
[Symbol]	WOOD AREA
[Symbol]	GRADE CROSSING
[Symbol]	FLAGPOLE
[Symbol]	CATCHBASIN
[Symbol]	MANHOLE/CATCHBASIN
[Symbol]	MANHOLE
[Symbol]	FIRE HYDRANT
[Symbol]	VALVE
[Symbol]	REDUCER
[Symbol]	TEE
[Symbol]	VALVE CHAMBER
[Symbol]	PRIVATE UTILITIES (WATERMAIN)
[Symbol]	EXTERIOR WATER FAUCET
[Symbol]	SLUCEWAY
[Symbol]	NATURAL GAS VALVE
[Symbol]	SIGN
[Symbol]	STOP SIGN
[Symbol]	TRAFFIC LIGHT
[Symbol]	ELECTRICITY POLE
[Symbol]	TELEPHONE POLE
[Symbol]	ELECT.-TEL.-STREET LIGHT POLE
[Symbol]	ELECT.-TEL.-TRANSFORMER POLE
[Symbol]	PRIVATE STREET LIGHT
[Symbol]	ELECTRICITY MANHOLE
[Symbol]	TELEPHONE MANHOLE
[Symbol]	SURVEY STATION
[Symbol]	ELEVATION
[Symbol]	DRAINAGE DIRECTION
[Symbol]	BOREHOLE (LOC. APPROX.)
[Symbol]	OVERLAND FLOW
[Symbol]	WORK LIMIT



No.	Date	Description	By
4	23/01/20	RE-ISSUED FOR SITE PLAN CONTROL	T.K
3	22/11/07	RE-ISSUED FOR SITE PLAN CONTROL	T.K
2	22/10/14	RE-ISSUED FOR SITE PLAN CONTROL	T.K
1	22/04/07	ISSUED FOR SITE PLAN CONTROL	T.K

DESIGNED BY: **J. C. ADAMS**
 100519478
 20 January 2023
 PROVINCE OF ONTARIO

APPROVED BY: **T. G. KENNEDY**
 100173201
 January 20, 2023
 PROVINCE OF ONTARIO



PROJECT NAME:
 403 RICHMOND ROAD &
 389 ROOSEVELT AVENUE

SHEET TITLE:
 GRADE CONTROL AND
 DRAINAGE PLAN

DISCIPLINE: CIVIL	
DRAWN BY: S.C. POGGIOLI	SCALE: 1:200
DESIGNER: J. ADAMS	DATE: 2022/04/07
APPROVER: T. KENNEDY	APPROVER: T. KENNEDY
PROJECT No.: A001046	DRAWING No.: C005
SHEET No.: 5 of 12	

NOTE OF CAUTION

THE GEODETIC COORDINATES OF EVERY ITEM INCLUDED AS PART OF THIS DOCUMENT ARE IN NAD83 - ORIGINAL / MTM - REFERENCE SYSTEM AND HAVE NO LEGAL VALUE. THE SITE LAYOUT MUST BE COMPLETED USING THE OFFICIAL BENCHMARKS OF AN ACCREDITED LAND SURVEYOR IN THE NAD83 - ORIGINAL / MTM - REFERENCE SYSTEM.

THE UNDERGROUND FEATURES AND INFORMATION THAT APPEAR ON THE DRAWINGS WERE OBTAINED FROM THE PUBLIC UTILITY COMPANIES AND/OR FROM THE CITY EACH RESPECTIVELY.

ALL INFORMATION UNDER THE LEGEND 'EXISTING' IS FOR INFORMATION ONLY. COMPLETE OR EXACT LOCATION AND ELEVATION OF UNDERGROUND SERVICES ARE NOT GUARANTEED.

CERTAIN UNDERGROUND FEATURES ON PRIVATE PROPERTY ARE NOT SHOWN ON THE CURRENT DRAWING.

ANYONE WHO PROCEEDS WITH EXCAVATION WORK SHALL VERIFY THE EXACT LOCATION OF ALL UNDERGROUND FEATURES, BY EXPLORATORY EXCAVATIONS, AND SHALL ASSUME FULL RESPONSIBILITY IF THERE IS ANY DAMAGE THAT OCCURS DURING WORK.

THE CONTRACTOR WILL HAVE THE RESPONSIBILITY AND THE OBLIGATION TO VALIDATE, BY EXPLORATORY EXCAVATION, THE SIZE OF THE PUBLIC UTILITIES UNDERGROUND SERVICES AND TO WARN THE ENGINEER OF ANY CONFLICT WITH THE PROJECTED WORK.