

Ottawa

Draw No. **CF-00564** of **G09**

Sheet of

Project No. **12+700**

Client **S. Gallagher, B. Ely, R.M.P.**

Project Name **BANK STREET WIDENING AND RECONSTRUCTION**

Stationing **STA. 12+400 TO STA. 12+700**

Scale **AS SHOWN**

Author **J.S.**

Checked **J.S.**

Drawn **J.S.**

City **J.S.**

Utility **J.S.**

Contract No. **12+700**

Project No. **12+700**

Revision No. **10**

Horizontal **10**

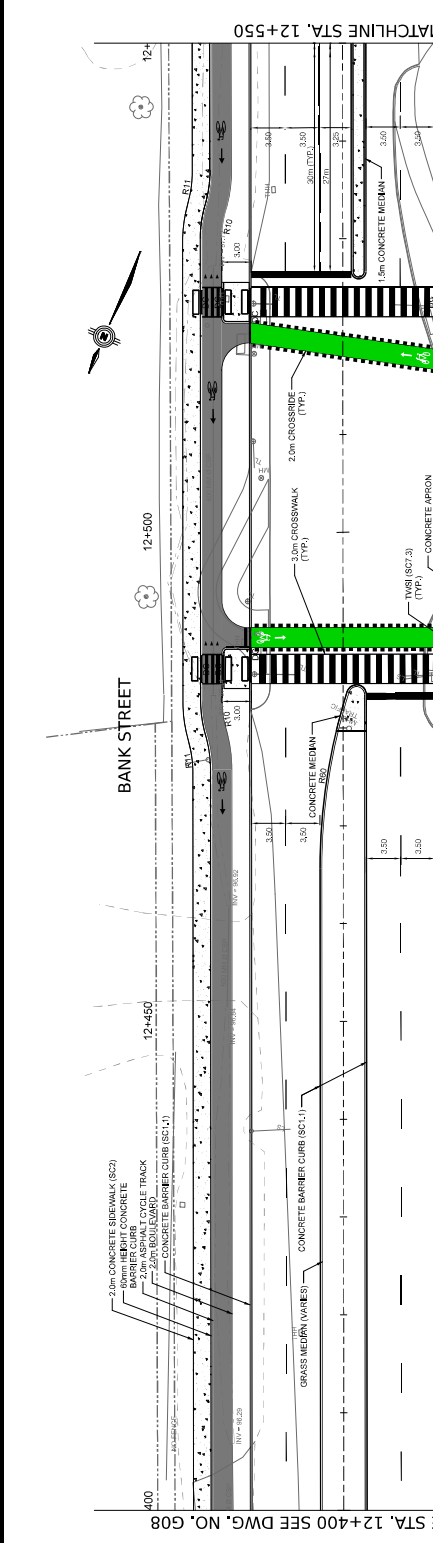
Vertical **10**

DATE: 12/12/2023

BY: J.S.

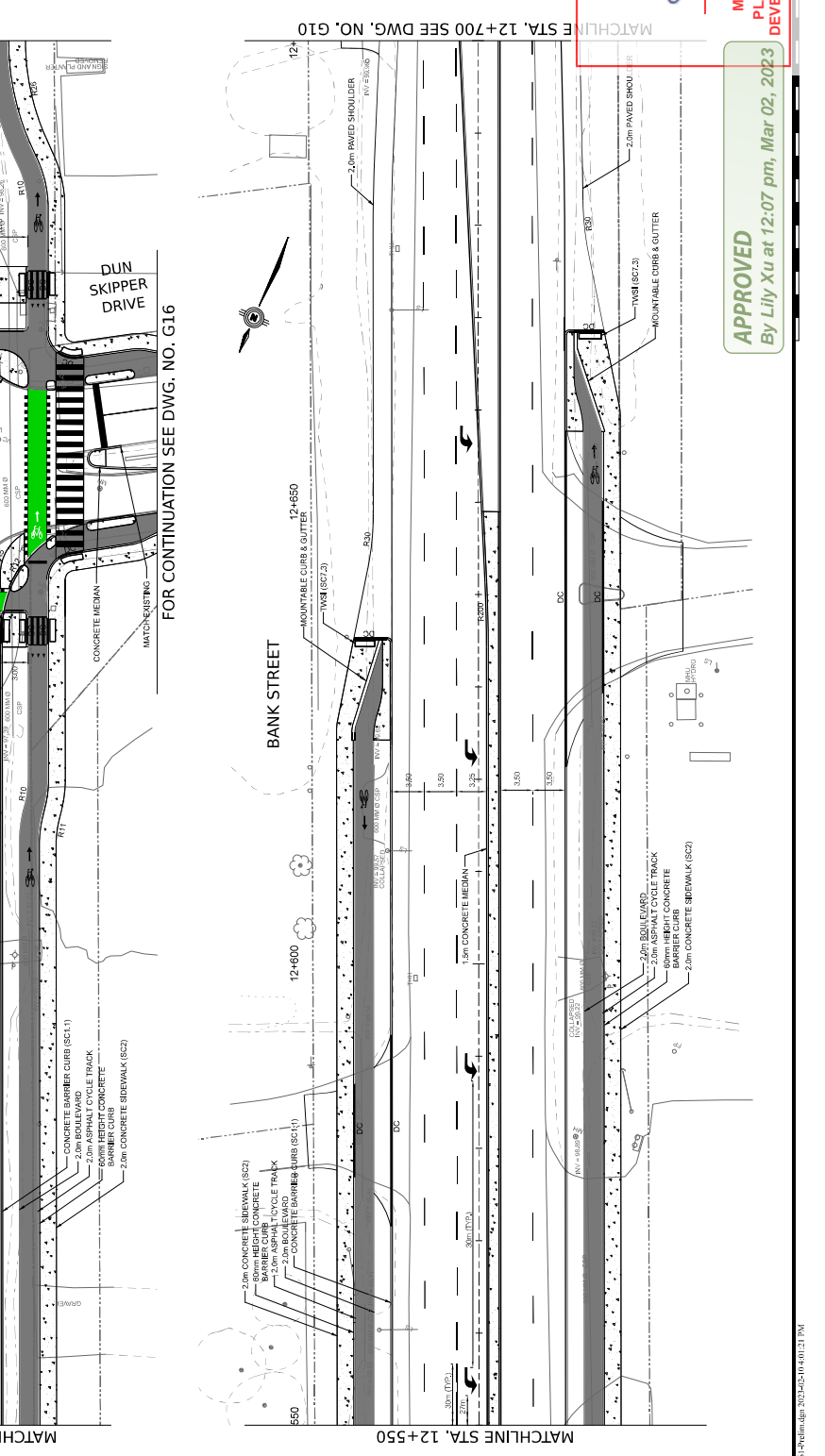
REVISIONS

1. ISSUED FOR PRELIMINARY DESIGN



MATCHLINE STA. 12+400 SEE DWG. NO. G08

MATCHLINE STA. 12+550



MATCHLINE STA. 12+550

MATCHLINE STA. 12+700 SEE DWG. NO. G10

FOR CONTINUATION SEE DWG. NO. G16

BANK STREET WIDENING AND RECONSTRUCTION

GEOMETRY & GENERAL LAYOUT

STA. 12+400 TO STA. 12+700

Robinson Consultants

NOTE: The Engineer undertakes no liability for the construction of the works shown on this drawing unless it is made responsible for damage to the works or to the public or to the property of others.

NOT FOR CONSTRUCTION

Lily Xu

LILY XU, MCIIP, RPP

MANAGER, INFRASTRUCTURE & ECONOMIC DEVELOPMENT DEPARTMENT, CITY OF OTTAWA

APPROVED

By Lily Xu at 12:07 pm, Mar 02, 2023