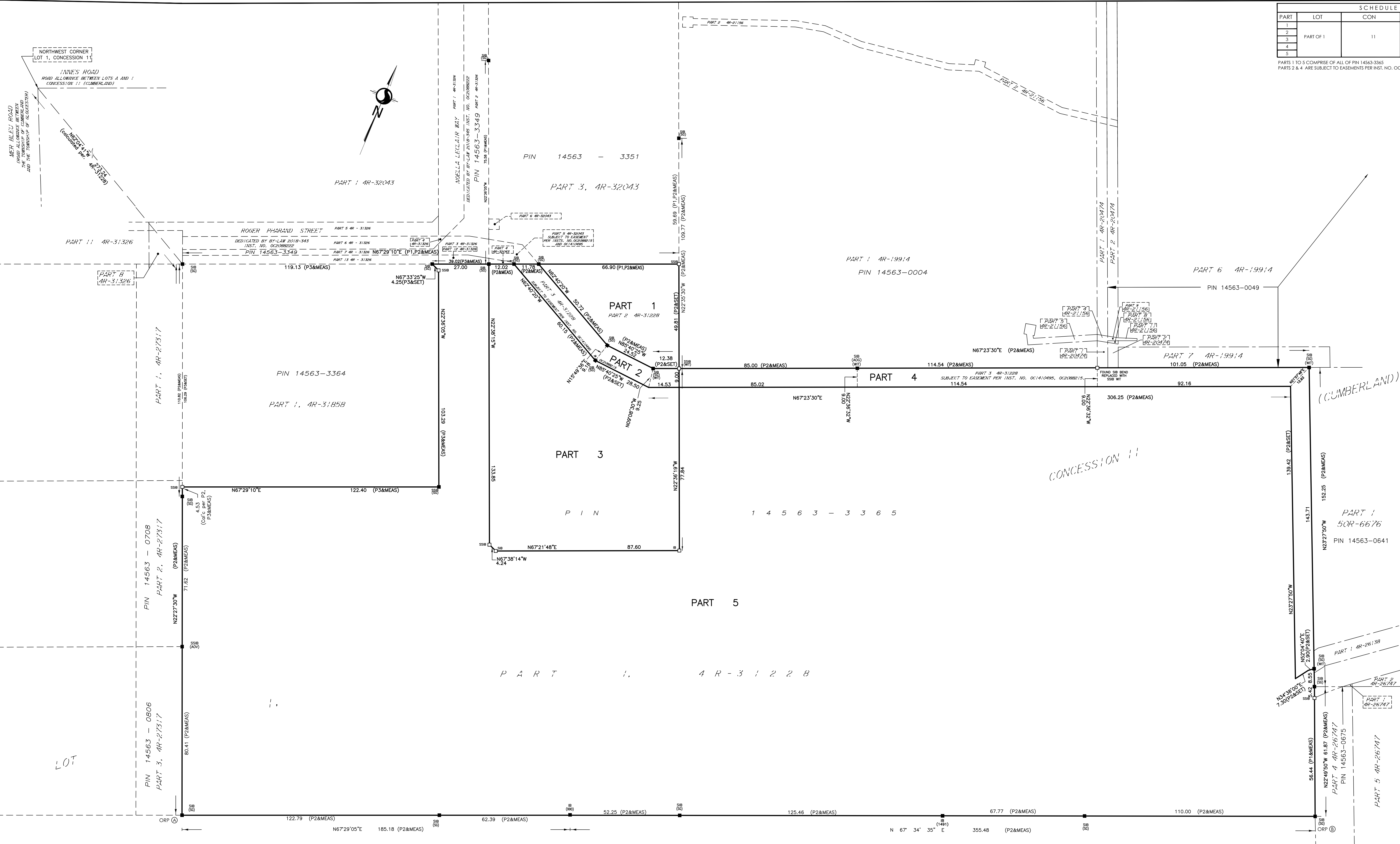


July 4, 2022

PLAN 4R-34739
 Received and deposited
July 5th, 2022
Susy Martino
 Representative for the
 Land Registrar for the
 Land Titles Division of
 Ottawa-carleton (No.4)

SCHEDULE			
PART	LOT	CON	PIN
1			
2	PART OF 1		
3		11	ALL OF 14563-3365
4			
5			

PARTS 1 TO 5 COMPRISE OF ALL OF PIN 14563-3365
 PARTS 2 & 4 ARE SUBJECT TO EASEMENTS PER INST. NO. OC1410495 & OC208215.



PLAN OF SURVEY OF
PART OF LOT 1
CONFESSION 11
 (GEOGRAPHIC TOWNSHIP OF CUMBERLAND)
CITY OF OTTAWA

Scale 1:750

THE INTENDED PLOT SIZE OF THIS PLAN IS 914 mm IN WIDTH BY 610 mm IN HEIGHT WHEN PLOTTED AT A SCALE OF 1:500m.

METRIC CONVERSION
 DISTANCES AND COORDINATES SHOWN ON THIS PLAN ARE IN METRES AND CAN BE CONVERTED TO FEET BY DIVIDING BY 0.3048

GRID SCALE CONVERSION
 DISTANCES ARE GROUND AND CAN BE CONVERTED TO GRID BY MULTIPLYING BY THE COMBINED SCALE FACTOR OF 0.999966.

BEARING NOTE
 BEARINGS ARE GRID, DERIVED FROM THE CAN-NET VRS NETWORK OBSERVATIONS ON NCC HORIZONTAL CONTROL MONUMENTS 19773035 AND 19680191, CENTRAL MERIDIAN, 76°30' WEST LONGITUDE MTM ZONE 9, NAD83 [ORIGINAL].

19773035 N:500060.42 E:324888.04
 19680191 N:5033564.26 E:388044.94

LEGEND

[Symbol]	DENOTES	FOUND MONUMENTS
[Symbol]	-	SET MONUMENTS
[Symbol]	-	IRON BAR
[Symbol]	-	ROUND IRON BAR
[Symbol]	-	STANDARD IRON BAR
[Symbol]	-	SHORT STANDARD IRON BAR
[Symbol]	-	CUT CROSS
[Symbol]	-	CONCRETE PIN
[Symbol]	-	WITNESS
[Symbol]	-	PROPERTY IDENTIFICATION NUMBER
[Symbol]	-	MEASURED
[Symbol]	-	PROPORTIONED
[Symbol]	-	ORIGIN UNKNOWN
[Symbol]	-	STANTEC GEOMATICS LTD.
[Symbol]	-	PLAN 4R-32043
[Symbol]	-	PLAN 4R-31228
[Symbol]	-	PLAN 4R-31858

OBSERVED REFERENCE POINTS DERIVED FROM THE CAN-NET VRS NETWORK GPS OBSERVATIONS ON NCC HORIZONTAL CONTROL MONUMENTS 19773035 AND 19680191, CENTRAL MERIDIAN, 76° 30' WEST LONGITUDE MTM ZONE 9, NAD83 (ORIGINAL). COORDINATES TO UTM ACCURACY PER SEC 14(2) OF O. REG. 216(10)

ORP ID	NORTHING	EASTING
①	5035192.24	382999.31
②	5035398.73	383498.92

COORDINATES CANNOT, IN THEMSELVES, BE USED TO RE-ESTABLISH CORNERS OR BOUNDARIES SHOWN ON THIS PLAN.

SURVEYOR'S CERTIFICATE
 I CERTIFY THAT:
 1. THIS SURVEY AND PLAN ARE CORRECT AND IN ACCORDANCE WITH THE SURVEY ACT; THE SURVEYORS ACT AND THE LAND TILES ACT AND THE REGULATIONS MADE UNDER THEM.
 2. THE SURVEY WAS COMPLETED ON THE 31st DAY OF MAY, 2022.

July 4, 2022
 DATE FRANCIS LAU
 ONTARIO LAND SURVEYOR

THIS PLAN OF SURVEY RELATES TO AOLS PLAN SUBMISSION FORM NUMBER V-21308.

Stantec Geomatics Ltd.
 CANADA LANDS SURVEYORS
 ONTARIO LAND SURVEYORS
 1331 CLYDE AVENUE, SUITE 400
 OTTAWA, ONTARIO, K2C 3G4
 TEL: 613.722.4400 FAX: 613.722.9999
 stantec.com

DRAWN: ME CHECKED: CK PLAN: FL FIELD: CA PROJECT: NO: 161614424-114

D:\Projects\161614424\Drawings\161614424-114_Surveyor_02.dwg
 161614424-114 (1491)