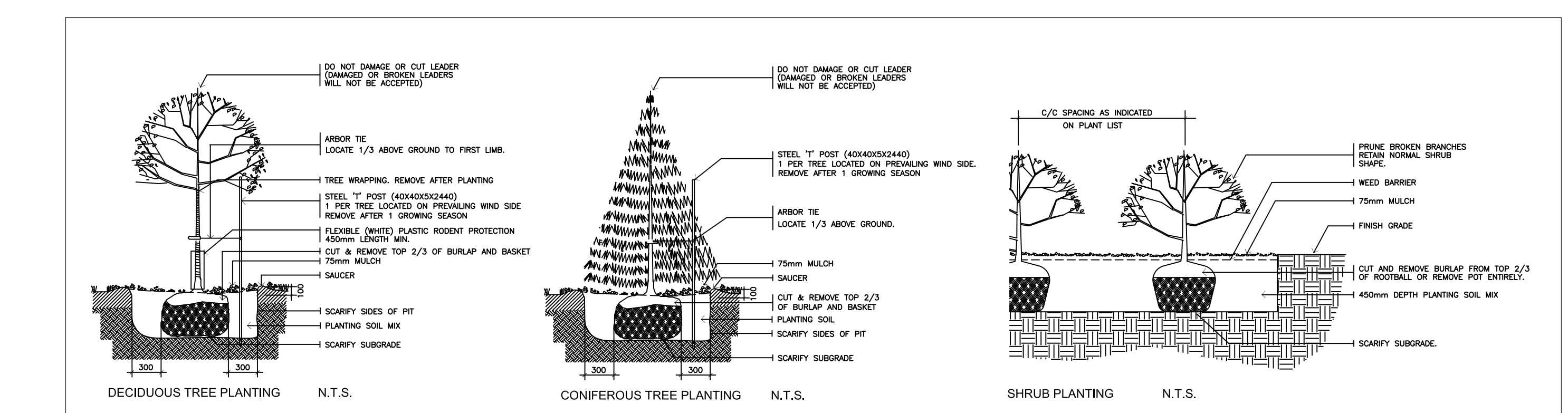
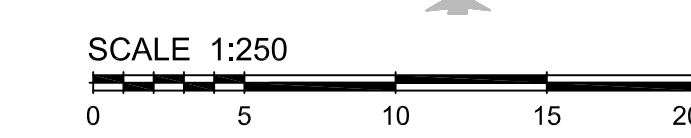
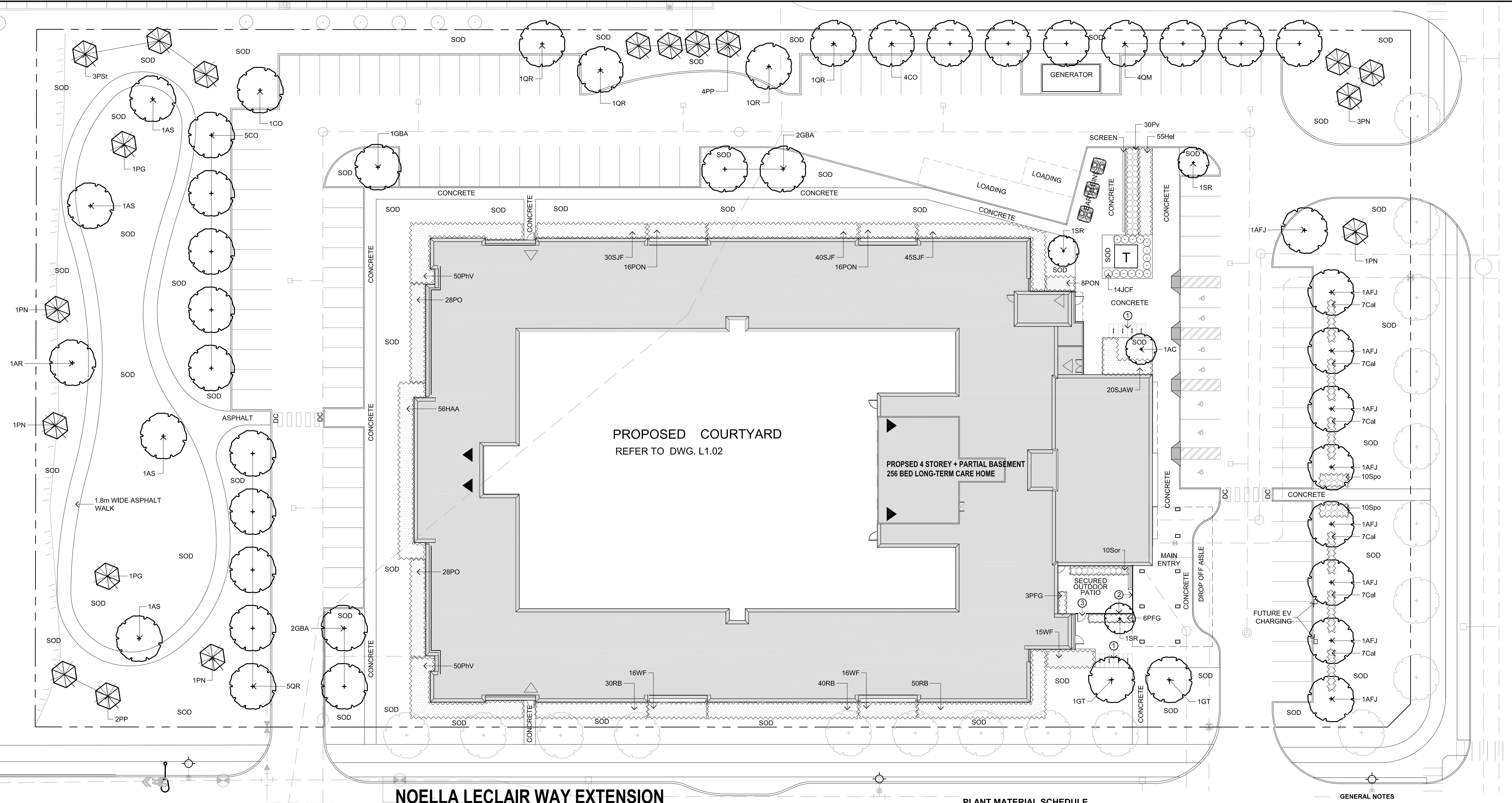


LEGEND / SYMBOL

- PROPOSED TREE (PER SUBDIVISION) \*TO BE ADJUSTED TO ULTIMATE/ FINAL ROAD ALIGNMENT
- PROPOSED DECIDUOUS TREE DETAIL 1/L1.01
- PROPOSED CONIFEROUS TREE DETAIL 1/L1.01
- PROPOSED SHRUBS / PERENNIALS / GRASSES DETAIL 1/L1.01
- PROPOSED BICYCLE PARKING SPACES PROVIDED: 16 PROPOSED BICYCLE RACK PROPOSED QTY: 8
- PROPOSED 1.8m HT. DECORATIVE METAL FENCE
- PROPOSED 1.8m HT. DECORATIVE METAL FENCE GATE



1 PLANTING DETAILS (TYPICAL) NTS

PLANT MATERIAL SCHEDULE

CODE	BOTANICAL NAME	COMMON NAME	QTY.	SIZE	REMARKS
<b>DECIDUOUS TREES</b>					
TAC	AMELANCHIER CANADENSIS	SHADBLOW SERVICEBERRY	1	50mm cal	B&B, Single Stem
AFJ	ACER X FREEMANII JEFFERSRED	AUTUMN BLAZE MAPLE	9	50mm cal	B&B, Single Stem
AR	ACER RUBRUM	RED MAPLE	1	50mm cal	B&B, Single Stem
AS	ACER SACCHARUM	SUGAR MAPLE	4	50mm cal	B&B, Single Stem
CO	CELTIS OCCIDENTALIS	COMMON HACKBERRY	10	50mm cal	B&B, Single Stem
GBA	GINKGO BILOBA 'AUTUMN GOLD'	AUTUMN GOLD MAIDENHAIR TREE	5	50mm cal	B&B, Single Stem
GT	GLEDTISIA TRIACANTHOS SKYLINE	SKYLINE HONEYLOCUST	2	50mm cal	B&B, Single Stem
QM	QUERCUS MACROCARPA	BUR OAK	4	50mm cal	B&B, Single Stem
QR	QUERCUS RUBRA	RED OAK	9	50mm cal	B&B, Single Stem
SR	SYRINGA RETICULATA 'IVORY SILK'	IVORY SILK JAPANESE TREE LILAC	3	50mm cal	B&B, Single Stem
<b>CONIFEROUS TREES</b>					
PG	PICEA GLAUCA	WHITE SPRUCE	2	200 cm ht	B&B
PN	PINUS NIGRA	AUSTRIAN PINE	7	200 cm ht	B&B
PP	PICEA PUNGENS	COLORADO GREEN SPRUCE	6	200 cm ht	B&B
PSI	PINUS STROBUS	WHITE PINE	3	200 cm ht	B&B
<b>DECIDUOUS SHRUBS</b>					
HAA	HYDRANGEA ARBORESCENS ANNABELLE	ANNABELLE HYDRANGEA	56	50cm ht	potted, 100cm o/c
PFG	POTENTILLA FRUTICOSA GOLDFINGER	GOLDFINGER CINQUEFOIL	9	50cm ht	potted, 100cm o/c
PHV	PHILADELPHUS X VIRGINIALIS	MOCKORANGE	100	50cm ht	potted, 100cm o/c
PO	PHYSOCARPUS OPULEFOLIUS	COMMON NINEBARK	56	50cm ht	potted, 100cm o/c
PON	PHYSOCARPUS OPULEFOLIUS NANUS	DWARF NINEBARK	40	50cm ht	potted, 100cm o/c
RB	ROSA BLANDA	SHRUB ROSE	120	50cm ht	potted, 100cm o/c
SJAW	SPIRAEA JAPONICA 'ANTHONY WATERER'	ANTHONY WATERER SPIREA	20	50cm ht	potted, 100cm o/c
SJF	SPIRAEA JAPONICA 'FROEBELII'	FROEBEL SPIREA	115	50cm ht	potted, 100cm o/c
WF	WEIGELA FLORIDA 'POLKA'	POLKA WEIGELA	47	50cm ht	potted, 100cm o/c
<b>CONIFEROUS SHRUBS</b>					
JCF	JUNIPERUS CHINENSIS 'FAIRVIEW'	FAIRVIEW JUNIPER	14	125cm ht	potted, 100cm o/c
<b>PERENNIALS</b>					
Hel	HELIOPSIS helianthoides 'Tuscan Sun'	TUSCAN SUNFLOWER	55	15 cm pot	plant 60cm o/c
<b>ORNAMENTAL GRASSES</b>					
Cal	CALAMAGROSTIS x acutiflora 'Karl Foerster'	KARL FOERSTER REED GRASS	42	15cm pot	plant 75cm o/c
Pv	PANICUM virgatum	SWITCH GRASS	30	15cm pot	plant 75cm o/c
Sc	SORGHASTRUM nutans	INDIAN GRASS	10	15cm pot	plant 75cm o/c
Spa	SPOROBOLUS heterolepis	PRAIRIE DROPSEED	20	15cm pot	plant 75cm o/c

GENERAL NOTES

- 1 This drawing shall be read in conjunction with all relevant Architectural, Engineering and related Drawings and Documents.
- 2 Refer to Engineering Drawings for Grading and Servicing.
- 3 Refer to Architectural Drawings for Site layout.
- 4 Contractor shall provide the location(s) of all services/utilities by consulting Municipal Authorities and Utility companies and shall be responsible for adequate protection from damage during construction.
- 5 Plant material shall be No.1 Grade and shall comply with the Metric Guide Specifications For Nursery Stock (latest edition), published by the Canadian Nursery Trades Association.
- 6 Plant Material locations are Schematic / Approximate only. Contractor shall stake out locations on site prior to work.
- 7 Contractor shall guarantee all plant material for a period of one (1) full year from the date of final acceptance.
- 8 Shrubs shall be planted in a continuous prepared bed of 450mm depth planting soil mix covered over with a woven polypropylene weed control fabric (LANDSCAPE FABRIC-Green-Line by Traco-LINQ) and 75mm depth composted pine mulch to finish grade, as specified.
- 9 Perennials and Ornamental Grasses shall be planted in a continuous prepared bed of 450mm depth planting soil mix covered over with 75mm depth composted pine mulch to finish grade. (NO WEED CONTROL FABRIC), as specified.
- 10 Sod areas to receive 125mm topsoil. Sod shall be No. 1 quality conforming to the Canadian Nursery Sod Growers Specification.
- 11 Reinststate all areas damaged or disturbed beyond the limit of Work.
- 12 Plant Material substitutions shall not be permitted without written approval from the Consultant.
- 13 Contractor shall advise Consultant a minimum of 48hrs. prior to proceeding landscape work and any required Field Reviews.
- 14 THIS PLAN HAS BEEN PREPARED FOR MUNICIPAL SITE PLAN APPROVAL ONLY AND MAY NOT BE USED FOR ANY OTHER PURPOSE.

FOR APPROVAL ONLY

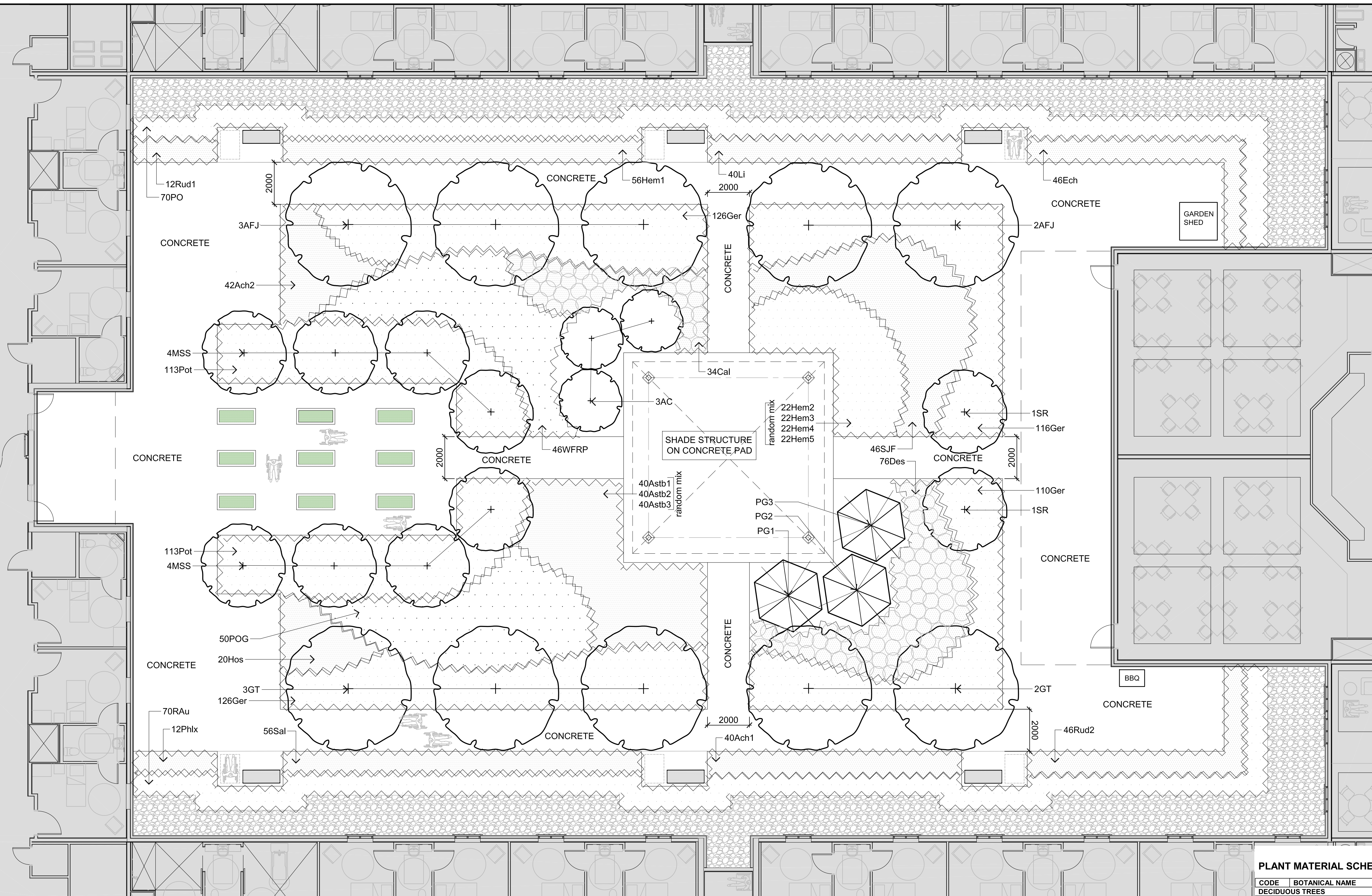
1.	FEB. 17/23	ISSUE FOR SPA
no.	date	revision
North Arrow		
		Stamp

Contractor shall check and verify all dimensions on site and report all errors and/or omissions to the Consultant.  
 Work to be done in accordance with all applicable codes and by-laws.  
 Do not scale Drawing.  
 This Drawing shall not be used for construction until signed by the Consultant.  
 Copyright reserved. This Drawing is the exclusive property of Levstek Consultants Inc. and shall not be used without consent.

Consultant  
**LEVSTEK CONSULTANTS**  
 LANDSCAPE ARCHITECTS  
 8871 Hugh Crescent - Ottawa - Ontario - K0A 2W0  
 613 - 826 - 0318

Client  
**ORLEANS EXTENDICARE**  
 ORLEANS, ONTARIO

Drawing Title <b>LANDSCAPE PLAN</b>		
Drawn MGB	Date JAN 2023	Drawing No. L1.01
Scale 1:250	Project No. 1217	



LEGEND / SYMBOL

- PROPOSED DECIDUOUS TREE  
DETAIL 1/L1.01
- PROPOSED DECIDUOUS SPECIMEN SHRUB  
DETAIL 1/L1.01
- PROPOSED CONIFEROUS TREE  
DETAIL 1/L1.01
- PROPOSED SHRUBS /  
PERENNIALS / GRASSES  
DETAIL 1/L1.01
- PROPOSED RIVERSTONE
- PROPOSED RAISED PLANTER  
(TO BE SUPPLIED BY OWNER)
- PROPOSED BENCH

GENERAL NOTES

- 1 This drawing shall be read in conjunction with all relevant Architectural, Engineering and related Drawings and Documents.
- 2 Refer to Architectural Drawings for Site layout.
- 3 Plant material shall be No. 1 Grade and shall comply with the Metric Guide Specifications For Nursery Stock (latest edition), published by the Canadian Nursery Trades Association.
- 4 Plant Material locations are **Schematic / Approximate only**. Contractor shall stake out locations on site prior to work.
- 5 Contractor shall guarantee all plant material for a period of one (1) full year from the date of final acceptance.
- 6 **Shrubs** shall be planted in a continuous prepared bed of 450mm depth planting soil mix covered over with a woven polypropylene weed control fabric (LANDSCAPE FABRIC-Green-Line by Tirace-LINQ) and 75mm depth composted pine mulch to finish grade, as specified.
- 7 **Perennials and Ornamental Grasses** shall be planted in a continuous prepared bed of 450mm depth planting soil mix covered over with 75mm depth composted pine mulch to finish grade. (**NO WEED CONTROL FABRIC**), as specified.
- 8 Plant Material substitutions shall not be permitted without written approval from the Consultant.
- 9 Contractor shall advise Consultant a minimum of **48hrs.** prior to proceeding landscape work and any required Field Reviews.
- 10 **THIS PLAN HAS BEEN PREPARED FOR MUNICIPAL SITE PLAN APPROVAL ONLY AND MAY NOT BE USED FOR ANY OTHER PURPOSE.**

FOR APPROVAL ONLY

1.	FEB. 17/23	ISSUE FOR SPA
no.	date	revision

North Arrow

Stamp

Contractor shall check and verify all dimensions on site and report all errors and/or omissions to the Consultant.  
Work to be done in accordance with all applicable codes and by-laws.  
Do not scale Drawing.  
This Drawing shall not be used for construction until signed by the Consultant.

Copyright reserved. This Drawing is the exclusive property of Levstek Consultants Inc. and shall not be used without consent.

Consultant

**LEVSTEK CONSULTANTS**  
L A N D S C A P E A R C H I T E C T S

5871 Hugh Crescent - Ottawa - Ontario - K0A 2W0  
613 - 824 - 8318

Client

Project

**ORLEANS EXTENDICARE**  
ORLEANS, ONTARIO

Drawing Title

**COURTYARD**  
**LANDSCAPE PLAN**

Drawn	Date	Drawing No.
MGB	JAN 2023	
Scale	Project No.	
1:100	1217	L1.02

PLANT MATERIAL SCHEDULE

(COURTYARD PLANTING)

CODE	BOTANICAL NAME	COMMON NAME	QTY.	SIZE	REMARKS
<b>DECIDUOUS TREES</b>					
AFJ	ACER x FREEMANII JEFFERSRED	AUTUMN BLAZE MAPLE	5	50mm cal	B&B, Single Stem
GT	GLEDITSIA TRIACANTHOS	SUNBURST HONEYLOCUST	5	50mm cal	B&B, Single Stem
MSS	MALUS SPRING SNOW	SPRING SNOW CRABAPPLE	8	50mm cal	B&B, Single Stem
SR	SYRINGA RETICULATA 'IVORY SILK'	IVORY SILK JAPANESE TREE LILAC	2	50mm cal	B&B, Single Stem
<b>CONIFEROUS TREES</b>					
PG1	PICEA GLAUCA	WHITE SPRUCE	1	200 cm ht	B&B
PG2	PICEA GLAUCA	WHITE SPRUCE	1	150cm ht	B&B
PG3	PICEA GLAUCA	WHITE SPRUCE	1	100cm ht	B&B
<b>DECIDUOUS SHRUBS</b>					
AC	AMELANCHIER CANADENSIS	DOWNY SERVICEBERRY	3	150cm ht	B&B, multi-stem
PO	PHYSOCARPUS OPULIFOLIUS	COMMON NINEBARK	70	50cm ht	potted, 100cm o/c
POG	PHYSOCARPUS OPULIFOLIUS	DART'S GOLD NINEBARK	50	50cm ht	potted, 100cm o/c
Rau	RIBES AUREUM	FLOWERING CURRANT	70	50cm ht	potted, 100cm o/c
SJF	SPIRAEA JAPONICA 'FROEBELI'	FROEBEL SPIREA	46	50cm ht	potted, 100cm o/c
WFRP	WEIGELA FLORIDA 'RED PRINCE'	RED PRINCE WEIGELA	46	50cm ht	potted, 100cm o/c
<b>PERENNIALS</b>					
Ach1	Achillea 'Moonshine'	MOONSHINE YARROW	40	15 cm pot	plant 60cm o/c
Ach2	Achillea millefolium 'Cerise Queen'	CERISE QUEEN YARROW	42	15 cm pot	plant 60cm o/c
Astb1	ASTILBE ardensis 'Amethyst'	FALSE SPIREA (lavender)	40	15 cm pot	plant 60cm o/c
Astb2	ASTILBE ardensis 'Fanal'	FALSE SPIREA (red)	40	15 cm pot	plant 60cm o/c
Astb3	Astilbe x 'Yonique Carmine'	YOUNIQUE CARMINE ASTILBE	40	15 cm pot	plant 60cm o/c
Ech	ECHINACEA pallida	PALE PURPLE CONEFLOWER	46	15 cm pot	plant 60cm o/c
Ger	GERANIUM maculatum	WILD GERANIUM	478	15 cm pot	plant 60cm o/c
Hem1	HEMEROCALLIS 'Hyperion'	Hyperion DAYLILY	56	15 cm pot	plant 60cm o/c
Hem2	HEMEROCALLIS 'Stella De Oro'	'Stella De Oro (yellow) DAYLILY	22	15 cm pot	plant 60cm o/c
Hem3	HEMEROCALLIS 'Little Dandy'	'Little Dandy' (purple/red) DAYLILY	22	15 cm pot	plant 60cm o/c
Hem4	HEMEROCALLIS 'Alpine Mist'	'Alpine Mist' (light red) DAYLILY	22	15 cm pot	plant 60cm o/c
Hem5	HEMEROCALLIS 'Sammy Russe'	'Sammy Russe' (orange/red) DAYLILY	22	15 cm pot	plant 60cm o/c
Hos	HOSTA 'Big Daddy'	'Big Daddy' HOSTA	20	15 cm pot	plant 75cm o/c
Li	LIATRIS spicata 'Floristan Purple'	FLORISTAN PURPLE BLAZING STAR	40	15 cm pot	plant 60cm o/c
Phlx	PHILOX paniculata 'Glamour Girl'	GARDEN PHLOX	12	15 cm pot	plant 60cm o/c
Pot	POTENTILLA werna nana	ALPINE CINQUEFOIL	226	15 cm pot	plant 60cm o/c
Rud1	RUDBECKIA laciniata	CUTLEAF CONEFLOWER	12	15 cm pot	plant 60cm o/c
Rud2	RUDBECKIA fulgida 'Goldstrum'	GLORIOSA DAISY	46	15 cm pot	plant 60cm o/c
Sal	SALVIA x sylvestris 'May Night'	MAY NIGHT SAGE	56	15 cm pot	plant 60cm o/c
<b>ORNAMENTAL GRASSES</b>					
Cal	CALAMAGROSTIS canadensis	CANADA BLUEJOINT	34	15cm pot	plant 75cm o/c
Des	DESCHAMPSIA caespitosa 'Goldschleier'	GOLDEN VEIL TUFT HAIR GRASS	76	15 cm pot	plant 75cm o/c

