

LEGEND:

STORM MANHOLE		PROPOSED	
CATCH BASIN		EXISTING	
HEAVY DRAIN			
TRENCH DRAIN			
SEWERY MANHOLE			
BUILDING			
LANDSCAPING			
HEAVY-DUTY ASPHALT			
LIGHT-DUTY ASPHALT			
CONCRETE			
RETAINING WALL			
SPOT ELEVATION			
ROAD GRADE			
OVERLAND FLOW DIRECTION			
QUARD RAIL			
CONSTRUCTION LIMIT			
PROPERTY LINE			
1/4" PLAN			
LABEL LEGEND:			
○ = CENTER MARK			
⊙ = MANHOLE			
⊙ = TOP OF CURB			
⊙ = TOP OF GROUND			
⊙ = TOP OF WALL			
⊙ = TOP OF WALL			

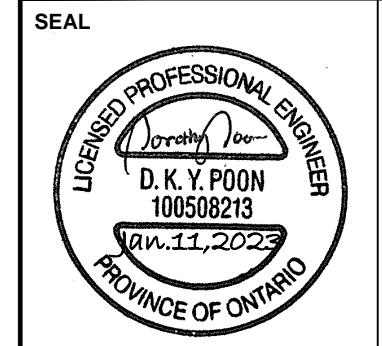
DesignWorks Engineering
 P: 647 660 7117 F: 647 660 7117
 Suite 1020, 181 Bay Street (Brookfield Place)
 Toronto, ON M5J 2V1
 info@designworksend.com
 www.designworksend.com
 COPYRIGHT 2020
 DESIGN WORKS ENGINEERING LTD.

COPYRIGHT RESERVED
 THESE DRAWINGS AND DESIGN ARE THE EXCLUSIVE PROPERTY OF DESIGN WORKS ENGINEERING LTD. AND MAY NOT BE REPRODUCED IN ANY WAY OR FORM WITHOUT THE DIRECT WRITTEN PERMISSION OF DESIGN WORKS ENGINEERING LTD.
NOTES
 THIS DRAWING IS NOT TO BE USED FOR CONSTRUCTION UNLESS IT IS SIGNED AND SEALED. AND DRAWINGS HAVE BEEN ISSUED FOR CONSTRUCTION IN THE TABLE BELOW.
 DO NOT SCALE THIS DRAWING.
BENCHMARK
 ELEVATIONS SHOWN ARE GEODETIC AND ARE REFERRED TO CITY OF OTTAWA VERTICAL BENCHMARK NO. 396 (1919680138), HAVING AN ELEVATION OF 95.06 METRES (ICGV28 GEODETIC DATUM).

BE ADVISED THAT SHOULD ANY PARTY, INCLUDING THE APPLICANT OR ANY SUBSEQUENT OWNER, APPLY FOR MORE THAN ONE CONDOMINIUM CORPORATION ENCOMPASSING ANY OR ALL OF THIS DEVELOPMENT OR MAKE AN APPLICATION THAT RESULTS IN A LAND DIVISION, STAFF MAY REQUIRE LEGAL ASSURANCES, INCLUDING BUT NOT LIMITED TO EASEMENTS, WITH RESPECT TO THE APPROVED SERVICES. SUCH ASSURANCES WILL BE DETERMINED AT THE TIME OF APPLICATION FOR CONDOMINIUM APPROVAL.

REVISIONS

No.	Comment	Date
1	ISSUED FOR CLC SUBMISSION	2022-10-25
2	ISSUED FOR CLC SUBMISSION	2023-01-11



CLIENT
 WestUrban Developments Ltd.

PROJECT
 1050 TAWADINA ROAD
 1050 TAWADINA ROAD
 OTTAWA, ON K1K 4E4

PROJECT DETAILS
 ENGINEER: DOROTHY POON, P.ENG.
 CHECKED BY: D.P.
 DRAWN BY: B.B.
 DESIGN BY: B.B.
 PROJECT No.: 2021630
 DATE: OCTOBER 2022
 SCALE: 1:200

DRAWING TITLE
 SITE GRADING PLAN
DRAWING NO.
 C1.00
SHEET
 1 / 4

LEGEND:

	PROPOSED	EXISTING
STORM SEWER		
WATER LINE		
SANITARY SEWER		
PIPE FLOW DIRECTION		
STORM MANHOLE		
AREA DRAIN		
CATCH BASIN		
DOUBLE CATCH BASIN		
TRENCH DRAIN		
PIPE INSULATION		
SANITARY MANHOLE		
WATER HYDRANT		
WATER VALVE		
90° BEND		
45° BEND		
TEE FITTING		
PIPE CROSSING NUMBER		
BUILDING		
RETAINING WALL		
CONSTRUCTION LIMIT		
PROPERTY LINE		
R/W PLAN		

LABEL LEGEND:

1/A - TOP OF GRADE
CS - CATCH BASIN
CB - DOUBLE CATCH BASIN
W - WATER
WV - WATER VALVE
FV - FIRE WATER SERVICE
A - AREA DRAIN

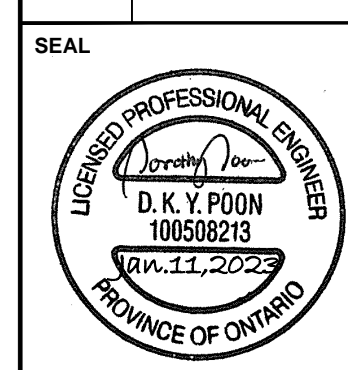
- NOTES:**
- IT IS THE RESPONSIBILITY OF THE APPLICANT/CONSULTANT TO ENSURE COMPLIANCE WITH ALL APPLICABLE PROVINCIAL STANDARDS AND TO OBTAIN ALL PROVINCIAL APPROVALS, INCLUDING BUT NOT LIMITED ENVIRONMENTAL COMPLIANCE APPROVALS.
 - THE CONTRACTOR SHALL ENSURE ALL MATERIAL AND CONSTRUCTION IS IN ACCORDANCE WITH THE CITY OF OTTAWA STANDARD DRAWINGS AND SPECIFICATIONS. DRAWINGS AND SPECIFICATIONS FROM OPSS & OPSD, SHALL BE USED WHERE THERE IS NO EQUIVALENT FROM CITY STANDARDS.
 - THE CONTRACTOR SHALL VERIFY ALL SURVEY STAKE LAYOUT POINTS AND DIMENSIONS AND ANY DISCREPANCIES SHALL BE REPORTED TO THE CONSULTANT PRIOR TO CONSTRUCTION. ANY DISCREPANCIES ARE TO BE IMMEDIATELY REPORTED TO THE CONSULTANT.
 - ALL EXISTING UTILITIES SHOWN ON DRAWINGS (PLAN AND PROFILE) ARE FOR REFERENCE PURPOSES ONLY. THE CONTRACTOR SHALL SATISFY THEMSELVES AS TO THE ACTUAL LOCATION AND DEPTH OF ANY UTILITY AND SHALL BE LIABLE FOR ALL OR ANY DAMAGES.
 - THE POSITION OF ALL STATIC STRUCTURES, SHALLOW UTILITIES, DEEP UTILITIES, AND ANY OTHER ABOVEGROUND OR UNDERGROUND UTILITIES STRUCTURES AND APPURTENANCES SHALL BE FIELD VERIFIED BY THE CONTRACTOR TO SATISFY HIMSELF AND SHALL ASSUME LIABILITY FOR ANY DAMAGES TO THEM DURING CONSTRUCTION. ANY DAMAGES ARE TO BE RECTIFIED TO THE SATISFACTION OF THE CITY INSPECTOR OR FRANCHISE UTILITY OWNERS.
 - REFER TO THE PRELIMINARY GEOTECHNICAL INVESTIGATION REPORT COMPLETED BY ENGLOBE ON OCTOBER 11TH, 2022 FOR GEOTECHNICAL INFORMATION.
 - ALL SEWER AND WATERMAIN PIPES SHALL BE INSTALLED AT A MINIMUM FROST COVER OF 2.0m.
 - ALL PROPOSED SERVICE CONNECTIONS WITHIN MUNICIPAL R.O.W.'S TO BE INSTALLED BY CITY FORCES AT THE OWNER'S EXPENSE.

SEWER CROSSING TABLE

NO	BOTTOM OF PIPE	TOP OF PIPE	CLEARANCE
1	88.828 STM	88.353 WTR	0.475
2	88.904 STM	88.731 SAN	0.173
3	87.905 WTR	88.929 SAN	0.976

REVISIONS

No.	Comment	Date
1	ISSUED FOR CLC SUBMISSION	2022-10-25
2	ISSUED FOR CLC SUBMISSION	2023-01-11



CLIENT

**WestUrban
Developments
Ltd.**

PROJECT

1050 TAWADINA ROAD

1050 TAWADINA ROAD
OTTAWA, ON K1K 4E4

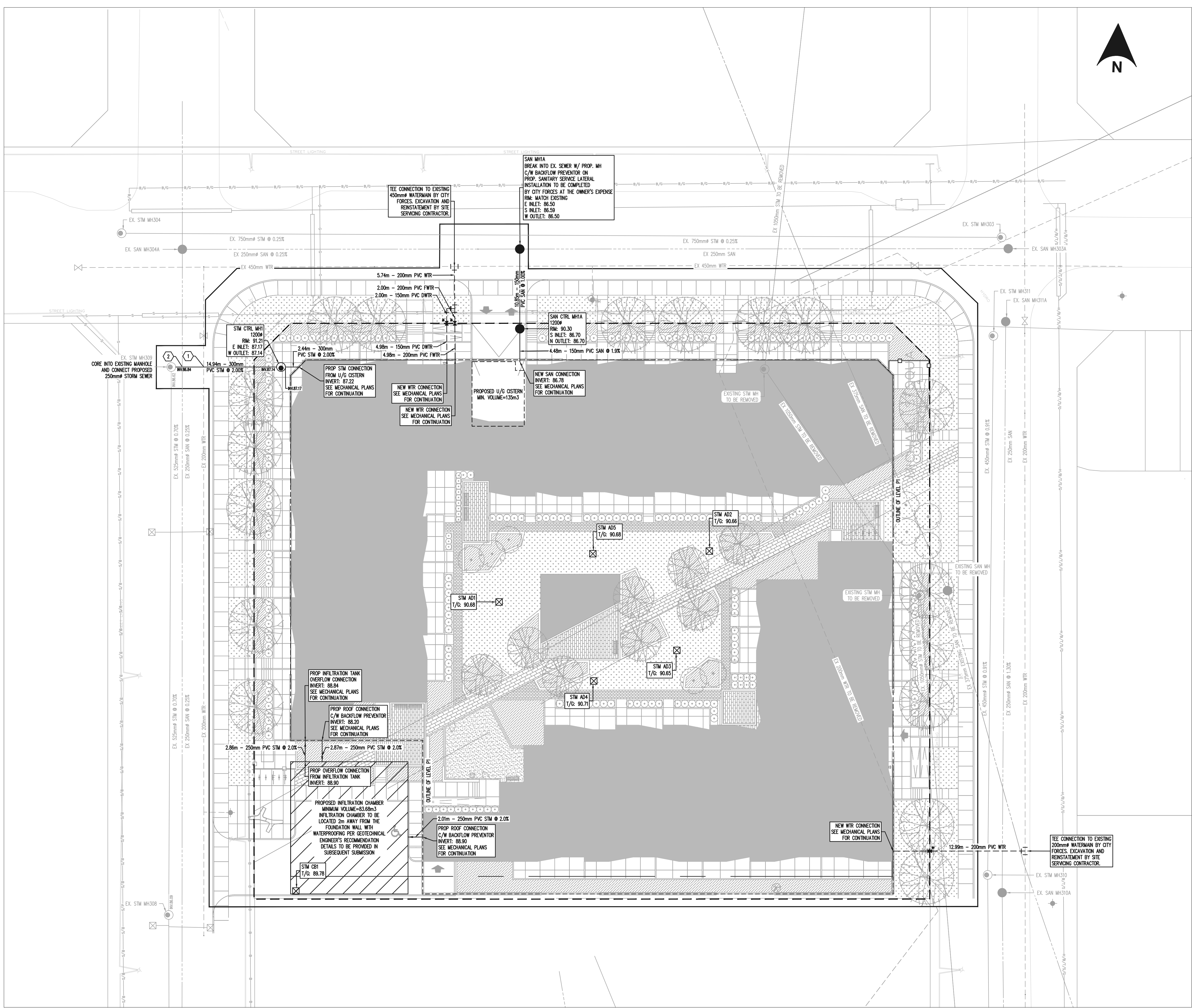
PROJECT DETAILS

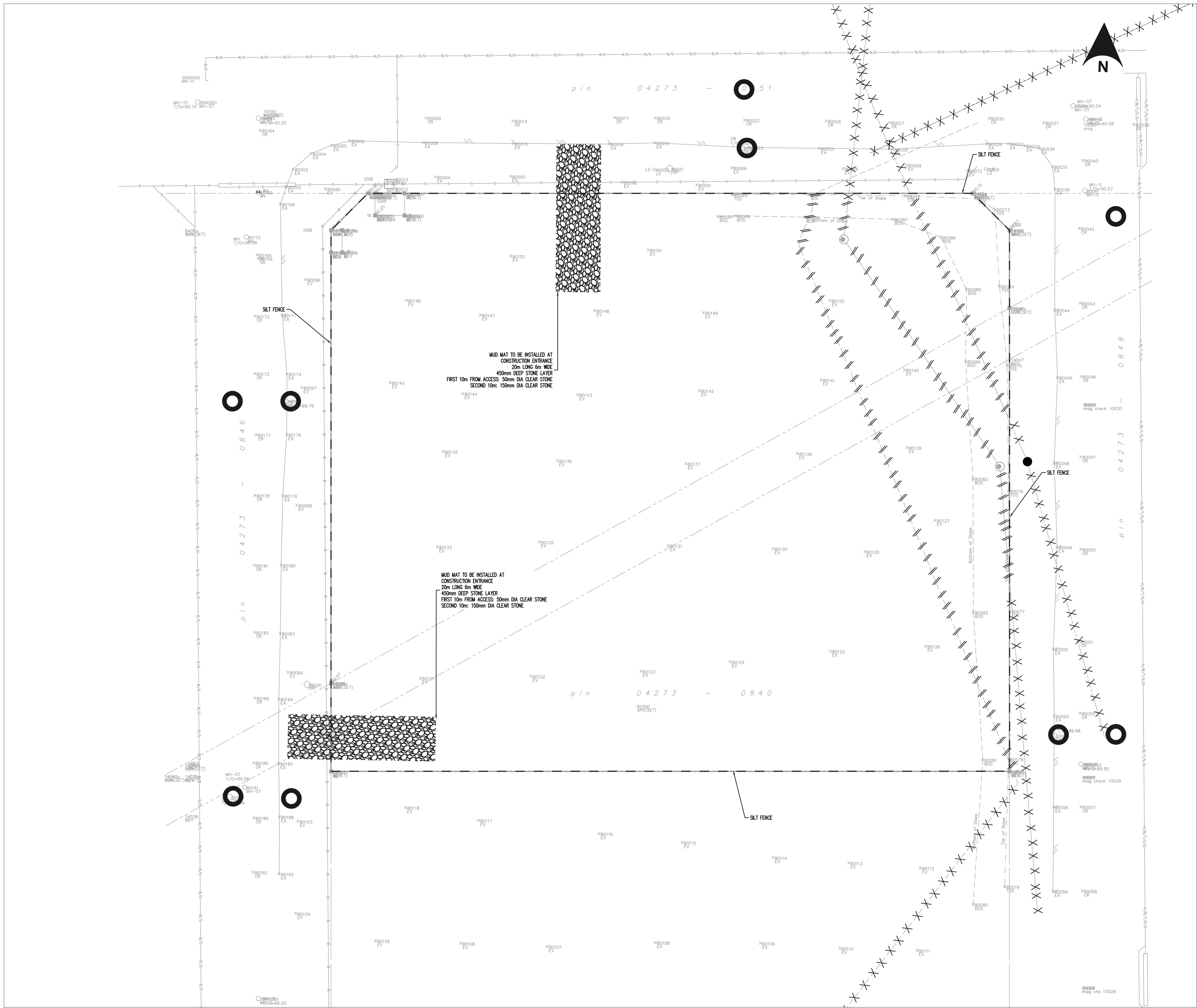
ENGINEER: DOROTHY POON, P.ENG.
CHECKED BY: D.P.
DRAWN BY: B.B.
DESIGN BY: B.B.
PROJECT No.: 2021630
DATE: OCTOBER 2022
SCALE: 1:250
DRAWING TITLE

SITE SERVICING PLAN

DRAWING NO.
C2.00

SHEET
2
4





LEGEND:

	PROPOSED	EXISTING
STORM SEWER	---	---
WATER LINE	---	---
SANITARY SEWER	---	---
PIPE FLOW DIRECTION	○	○
STORM MANHOLE	□	□
AREA DRAIN	□	□
CATCH BASIN	□	□
DOUBLE CATCH BASIN	□	□
TRENCH DRAIN	---	---
PIPE INSULATION	---	---
SANITARY MANHOLE	○	○
WATER HYDRANT	○	○
WATER VALVE	○	○
90° BEND	○	○
45° BEND	○	○
TEE FITTING	○	○
PIPE CROSSING NUMBER	○	○
BUILDING	---	---
RETAINING WALL	---	---
CONSTRUCTION LIMIT	---	---
PROPERTY LINE	---	---
R/W PLAN LABEL LEGEND:		
1/2" = TOP OF GRADE	○	○
OS = CATCH BASIN	□	□
DS = DOUBLE CATCH BASIN	□	□
WS = WATER SERVICE	---	---
WFS = PRE-WAS SERVICE	---	---
AS = AREA DRAIN	---	---
SLT FENCING	---	---
OB INLET PROTECTION REQUIRED	○	○
UTILITY/SERVICE LINE TO BE REMOVED	---	---
UTILITY/SERVICE LINE TO BE ABANDONED	---	---

- NOTES:**
- IT IS THE RESPONSIBILITY OF THE APPLICANT/CONSULTANT TO ENSURE COMPLIANCE WITH ALL APPLICABLE PROVINCIAL STANDARDS AND TO OBTAIN ALL PROVINCIAL APPROVALS, INCLUDING BUT NOT LIMITED TO ENVIRONMENTAL COMPLIANCE APPROVALS.
 - EROSION AND SEDIMENT CONTROL (ESC) MEASURES WILL BE IMPLEMENTED PRIOR TO, AND MAINTAINED, DURING CONSTRUCTION PHASES TO PREVENT ENTRY OF SEDIMENT INTO THE WATER. ALL DAMAGED ESC MEASURES SHOULD BE REPAIRED AND/OR REPLACED WITHIN 48 HOURS OF INSPECTION.
 - ALL DISTURBED AREAS WILL BE MINIMIZED TO THE EXTENT POSSIBLE AND TEMPORARILY OR PERMANENTLY STABILIZED OR RESTORED AS WORK PROGRESSES.
 - THE ESC STRATEGIES OUTLINED IN THE REPORTS AND IN THESE NOTES ARE NOT STATIC AND MAY NEED TO BE UPGRADED/AMENDED AS SITE CONDITIONS CHANGE TO MINIMIZE SEDIMENT LOADED RUNOFF FROM LEAVING THE WORK AREA. IF THE PRESCRIBED MEASURES IN THE REPORTS AND NOTES ARE NOT EFFECTIVE IN PREVENTING THE RELEASE OF DELETERIOUS SUBSTANCE, THEN ALTERNATIVE MEASURES MUST BE IMPLEMENTED IMMEDIATELY TO MINIMIZE POTENTIAL ECOLOGICAL IMPACTS AND A TORONTO REGION CONSERVATION AUTHORITY ENFORCEMENT OFFICE SHOULD BE IMMEDIATELY CONTACTED. ADDITIONAL ESC MEASURES TO BE KEPT ON SITE AND USED AS NECESSARY.
 - ALL ACTIVITIES, INCLUDING MAINTENANCE PROCEDURES, WILL BE CONTROLLED TO PREVENT THE ENTRY OF PETROLEUM PRODUCTS, DEBRIS, RUBBLE, CONCRETE, OR OTHER DELETERIOUS SUBSTANCES INTO THE WATER. VEHICULAR REFUELING AND MAINTENANCE WILL BE CONDUCTED A MINIMUM OF 30m FROM ANY ON-SITE WATER BODY OR DRAINAGE WAY.
 - FILTER FABRIC TO BE PLACED UNDER GRATES ON ALL CATCH BASINS SURROUNDING THE SITE, TO TRAP SEDIMENT. SILT TRAPS ARE TO BE CLEANED REGULARLY AND ARE NOT TO BE REMOVED UNTIL SUCH TIME AS THE CONSTRUCTION IS COMPLETE AND THE LANDSCAPING IS GRADED AND SLOPED. FILTER FABRIC FOR SILT CONTROL TO BE TERRA FIX 270R OR APPROVED EQUIVALENT.
 - ALL EROSION AND SEDIMENT CONTROL MEASURES SHALL MEET THE REQUIREMENTS SET OUT IN OPS 804, OPS 805, CITY OF OTTAWA CONSTRUCTION SPECIFICATION 01 57 13, CITY OF OTTAWA STANDARD SPECIFICATION SP F-100 AND CITY OF OTTAWA STANDARD SPECIFICATION SP F-804.

DesignWorks Engineering
 P: 647 660 7117 F: 647 660 7117
 Suite 1020, 181 Bay Street (Brookfield Place)
 Toronto, ON M5J 2V1
 info@designworksend.com
 www.designworksend.com
 COPYRIGHT 2020
 DESIGN WORKS ENGINEERING LTD.

COPYRIGHT RESERVED
 THESE DRAWINGS AND DESIGN ARE THE EXCLUSIVE PROPERTY OF DESIGN WORKS ENGINEERING LTD. AND MAY NOT BE REPRODUCED IN ANY WAY OR FORM WITHOUT THE DIRECT WRITTEN PERMISSION OF DESIGN WORKS ENGINEERING LTD.
NOTES
 THIS DRAWING IS NOT TO BE USED FOR CONSTRUCTION UNLESS IT IS SIGNED AND SEALED. AND DRAWINGS HAVE BEEN ISSUED FOR CONSTRUCTION IN THE TABLE BELOW.
 DO NOT SCALE THIS DRAWING.

BENCHMARK
 ELEVATIONS SHOWN ARE GEODETIC AND ARE REFERRED TO CITY OF OTTAWA VERTICAL BENCHMARK NO. 396 (01919680138), HAVING AN ELEVATION OF 95.06 METRES (CGVD28 GEODETIC DATUM).

BE ADVISED THAT SHOULD ANY PARTY, INCLUDING THE APPLICANT OR ANY SUBSEQUENT OWNER, APPLY FOR MORE THAN ONE CONDOMINIUM CORPORATION ENCOMPASSING ANY OR ALL OF THIS DEVELOPMENT OR MAKE AN APPLICATION THAT RESULTS IN A LAND DIVISION, STAFF MAY REQUIRE LEGAL ASSURANCES, INCLUDING BUT NOT LIMITED TO EASEMENTS, WITH RESPECT TO THE APPROVED SERVICES. SUCH ASSURANCES WILL BE DETERMINED AT THE TIME OF APPLICATION FOR CONDOMINIUM APPROVAL.

REVISIONS

No.	Comment	Date
1	ISSUED FOR CLC SUBMISSION	2022-10-25
2	ISSUED FOR CLC SUBMISSION	2023-01-11



CLIENT
 WestUrban Developments Ltd.

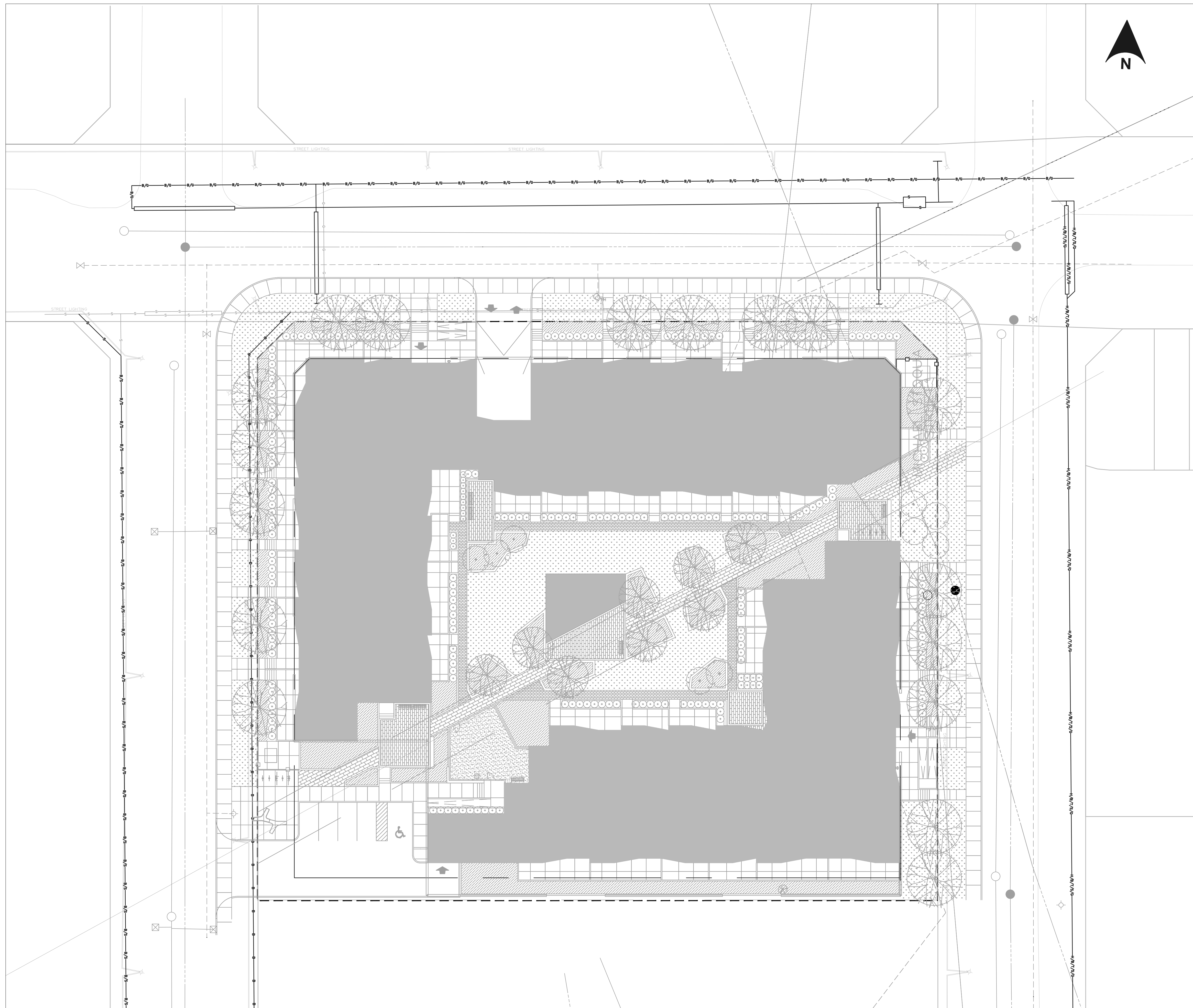
PROJECT
 1050 TAWADINA ROAD
 1050 TAWADINA ROAD
 OTTAWA, ON K1K 4E4

PROJECT DETAILS
 ENGINEER: DOROTHY POON, P.ENG.
 CHECKED BY: D.P.
 DRAWN BY: B.B.
 DESIGN BY: B.B.
 PROJECT No.: 2021630
 DATE: OCTOBER 2022
 SCALE: 1:250

DRAWING TITLE
 SITE EROSION AND SEDIMENT CONTROL PLAN

DRAWING NO.
 C3.00

SHEET
 3 / 4



LEGEND:

	PROPOSED	EXISTING
STORM SEWER	--- (dashed)	--- (dashed)
WATER LINE	--- (dashed)	--- (dashed)
SANITARY SEWER	--- (dashed)	--- (dashed)
PIPE FLOW DIRECTION	--- (dashed)	--- (dashed)
STORM MANHOLE	○ (circle)	○ (circle)
AREA DRAIN	⊞ (square)	⊞ (square)
CATCH BASIN	⊞ (square)	⊞ (square)
DOUBLE CATCH BASIN	⊞ (square)	⊞ (square)
TRENCH DRAIN	--- (dashed)	--- (dashed)
PIPE INSULATION	--- (dashed)	--- (dashed)
SANITARY MANHOLE	● (circle)	● (circle)
WATER HYDRANT	⊕ (circle)	⊕ (circle)
WATER VALVE	⊕ (circle)	⊕ (circle)
90° BEND	⊕ (circle)	⊕ (circle)
45° BEND	⊕ (circle)	⊕ (circle)
TIE FITTING	⊕ (circle)	⊕ (circle)
PIPE CROSSING NUMBER	⊕ (circle)	⊕ (circle)
BUILDING	--- (dashed)	--- (dashed)
RETAINING WALL	--- (dashed)	--- (dashed)
CONSTRUCTION LIMIT	--- (dashed)	--- (dashed)
PROPERTY LINE	--- (dashed)	--- (dashed)
R/W PLAN	--- (dashed)	--- (dashed)
BELL CABLE/ROCKERS CABLE	--- (dashed)	--- (dashed)
STREET LIGHT CABLE	--- (dashed)	--- (dashed)
BELL CABLE	--- (dashed)	--- (dashed)
BELL CABLE/STREET LIGHT CABLE	--- (dashed)	--- (dashed)
BELL CABLE/GASMAIN	--- (dashed)	--- (dashed)
GASMAIN	--- (dashed)	--- (dashed)
JOINT UTILITY TRENCH	--- (dashed)	--- (dashed)

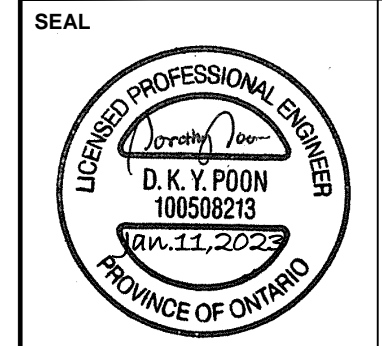
DesignWorks Engineering
 P: 647 660 7117 F: 647 660 7117
 Suite 1020, 181 Bay Street (Brookfield Place)
 Toronto, ON M5J 2V1
 info@designworkseng.com
 www.designworkseng.com
 COPYRIGHT 2020
 DESIGN WORKS ENGINEERING LTD.

COPYRIGHT RESERVED
 THESE DRAWINGS AND DESIGN ARE THE EXCLUSIVE PROPERTY OF DESIGN WORKS ENGINEERING LTD. AND MAY NOT BE REPRODUCED IN ANY WAY OR FORM WITHOUT THE DIRECT WRITTEN PERMISSION OF DESIGN WORKS ENGINEERING LTD.
NOTES
 THIS DRAWING IS NOT TO BE USED FOR CONSTRUCTION UNLESS IT IS SIGNED AND SEALED. AND DRAWINGS HAVE BEEN ISSUED FOR CONSTRUCTION IN THE TABLE BELOW.
 DO NOT SCALE THIS DRAWING.

BENCHMARK
 ELEVATIONS SHOWN ARE GEODETIC AND ARE REFERRED TO CITY OF OTTAWA VERTICAL BENCHMARK NO. 336 (1919680138), HAVING AN ELEVATION OF 95.06 METRES (CGVD28 GEODETIC DATUM).
BE ADVISED THAT SHOULD ANY PARTY, INCLUDING THE APPLICANT OR ANY SUBSEQUENT OWNER, APPLY FOR MORE THAN ONE CONDOMINIUM CORPORATION ENCOMPASSING ANY OR ALL OF THIS DEVELOPMENT OR MAKE AN APPLICATION THAT RESULTS IN A LAND DIVISION, STAFF MAY REQUIRE LEGAL ASSURANCES, INCLUDING BUT NOT LIMITED TO EASEMENTS, WITH RESPECT TO THE APPROVED SERVICES. SUCH ASSURANCES WILL BE DETERMINED AT THE TIME OF APPLICATION FOR CONDOMINIUM APPROVAL.

REVISIONS

No.	Comment	Date
1	ISSUED FOR CLC SUBMISSION	2022-10-25
2	ISSUED FOR CLC SUBMISSION	2023-01-11



CLIENT
 WestUrban Developments Ltd.

PROJECT
 1050 TAWADINA ROAD
 1050 TAWADINA ROAD
 OTTAWA, ON K1K 4E4

PROJECT DETAILS
 ENGINEER: DOROTHY POON, P.ENG.
 CHECKED BY: D.P.
 DRAWN BY: B.B.
 DESIGN BY: B.B.
 PROJECT No.: 2021630
 DATE: OCTOBER 2022
 SCALE: 1:250

DRAWING TITLE
 UTILITY PLAN

DRAWING NO.
 C4.00

SHEET
 4 / 4

K:\Project\Engineering\2021\1020\1050 Tawadina Village, Ottawa - WestUrban.C. CIVIL ENGINEERING\2. C4\2022\1030 - Contact Drawings.dwg (Printed: 1/11/2023 12:43 PM)