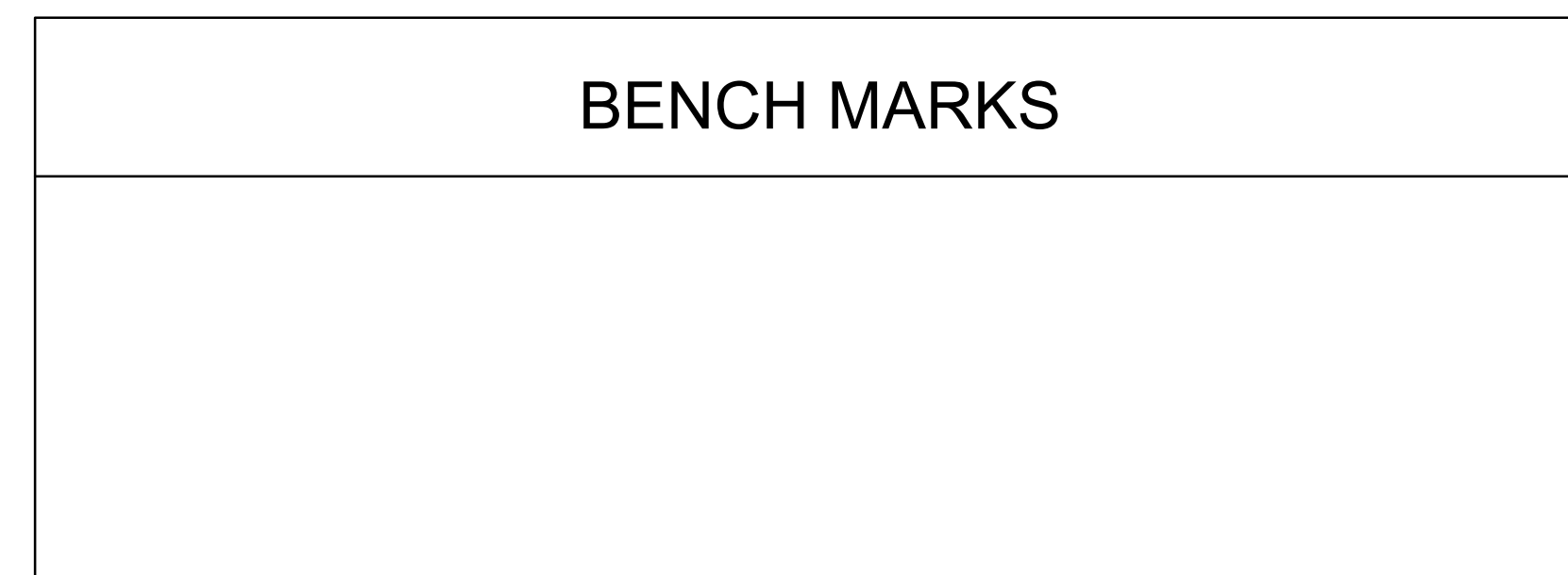
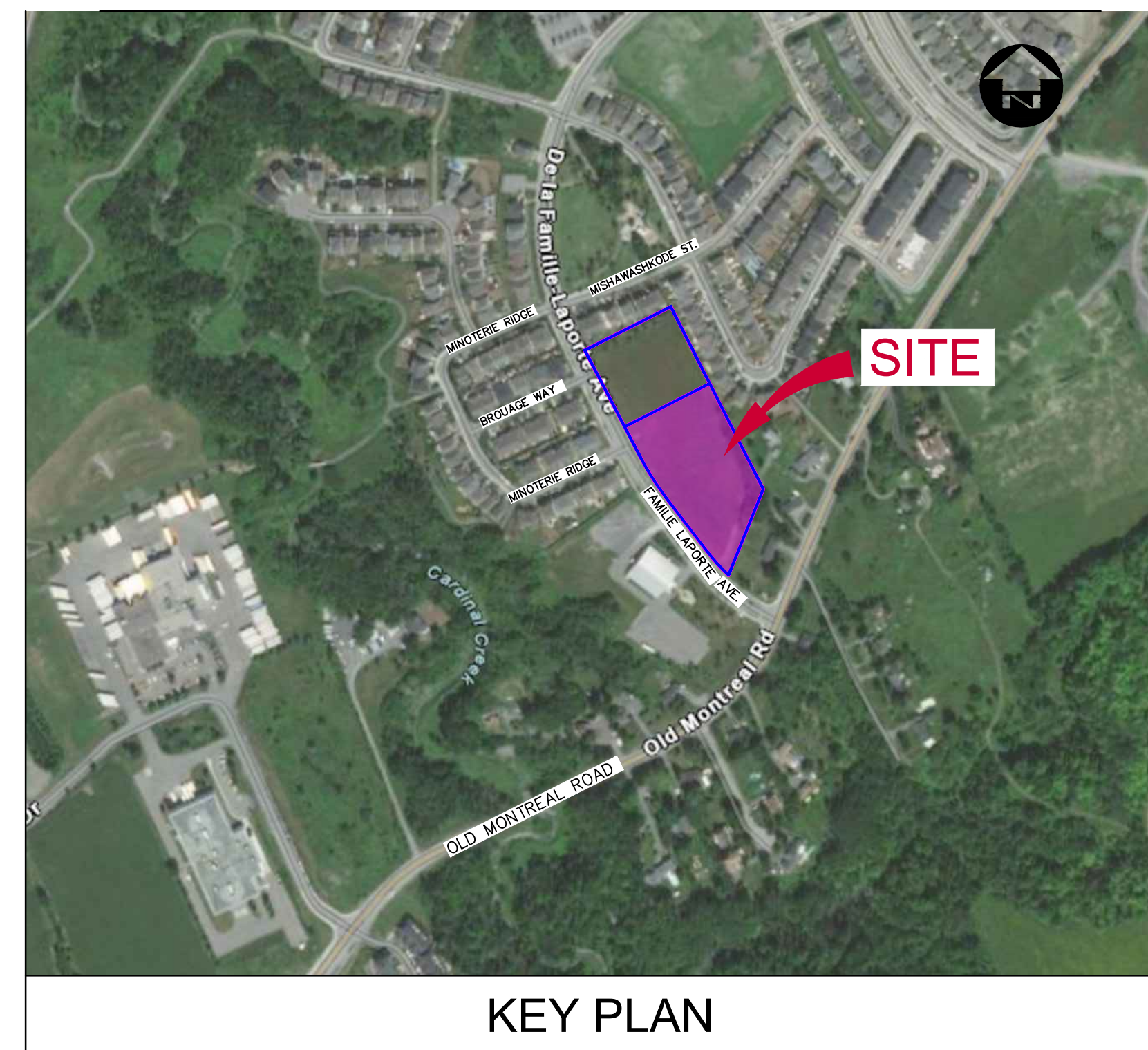


LONG TERM CARE FACILITY - ORLEANS

IN THE CITY OF OTTAWA,
ONTARIO

ARCH CORPORATION

LEGEND			
DESCRIPTION	EXISTING	ABANDONED	NEW
SEWERS			
SANITARY	250 S	AB 250 S	250 S
STORM	375 ST	AB 375 ST	375 ST
COMBINED	300 C	AB 300 C	300 C
MANHOLE	○ MH		● MH
CATCH BASIN	□ CB		■ CB
DITCH INLET CB	□ DICB		■ DICB
TWIN INLET CB	□ TICB		■ TICB
CULVERT	C-----C		
SANITARY SERVICE	S		S
STORM SERVICE	ST		ST
CLEANOUT	○ CO		○ CO
CURB INLET CB	□ CICB		□ CICB
TWIN CURB INLET CB	□ TCICB		■ TCICB
WATER			
MAIN	150 W	AB 150 W	200 W
MANHOLE	○ WMH		● WMH
VALVE	○ WV		○ WV
TAP SLEEVE & VALVE	○ FTV		○ TS&V
FIRE HYDRANT	◇ FH		◇ FH
BLOW-OFF	○ BO		○ BO
PRIVATE SERVICE	W		W
SERVICE VALVE	○ WSV		○ WSV
GAS			
MAIN	100 G	AB 100 G	
VALVE	○ GV		
BELL			
BURIED	B	AB B	
MANHOLE	○ BMH		
PEDESTAL, OPI	□ B PED	□ OPB	
POLE (GUY)	B		
HYDRO			
BURIED	H	AB H	H
MANHOLE	○ HMH		● HMH1
POLE (GUY)	H		H
LIGHT	L		LS 100
TRANSFORMER			T
VAULT			V
CABLE TV			
BURIED	TV	AB TV	CTV
PEDESTAL	□ TV PED		
POLE	TV		TV
TRAFFIC			
BURIED	T	AB T	T
MANHOLE	○ TMH		● TMH1
JUNCTION BOX	□ JB		□ JB1
CONTROLLER	□ TC		□ TC
POLE	T		TI
PAVEMENT			
CONCRETE	CONC		
ASPHALT	ASPH		
ASPH ON CONC	ASPH/CONC		
PAVING STONE	PAVER		
TAR AND CHIP	TAR & CHIP		
GRAVEL	GRAV		
MISCELLANEOUS			
SIDEWALK (CONC. or ASPH.)	CSW	ASW	
SIGN	* S		
TREE (dia) or BUSH	300	300	
HEDGE	X	X	
FENCE	X	X	
GATE	X	X	
BOREHOLE	○ BH		
AUGERHOLE	○ AH		
PROPERTY BAR	□ IP	□ SB	□ RB
NAIL	□ NAIL		
CONCRETE MONUMENT	□ MON		
GROUND ELEVATION	176.25		176.25



ALL EXISTING INVERTS TO BE FIELD CHECKED
PRIOR TO CONSTRUCTION

INDEX	
SHEET	DESCRIPTION
	COVER SHEET
CIV-1	SITE SERVICING PLAN
CIV-2	SITE GRADING PLAN
CIV-3	SOIL EROSION CONTROL PLAN
CIV-4	NOTES, CROSS SECTION AND DETAILS
CIV-5	NOTES AND MISCELLANEOUS DETAILS

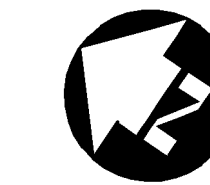
FILENAME: C:\P\WORKING DIRECTORY\PROJECTS 2021\2020 DAMS\2021\212847-00-CR-COR-CON-DWG PLOTTED BY: STODCA, DORNA
PLOT DATE: 2023-01-31 @ 3:42:26 PM PLOT SCALE: 1:25.4 PLOT STYLE: DILLON-STANDARD.CTB
DILLON CONSULTING LIMITED 3000 DEZIEL DRIVE SUITE 608, WINDSOR, ONTARIO, N9W 9K4, PHONE (519) 944-3000, FAX (519) 944-9244

ISSUED FOR BUILDING PERMIT
JANUARY 27, 2023
RE-ISSUED FOR SITE PLAN CONTROL APPLICATION AND ZONING BY-LAW AMENDMENT
AUGUST 19, 2022
ISSUED FOR SITE PLAN CONTROL AND ZONING BY-LAW AMENDMENT
DECEMBER 02, 2021



Conditions of Use

Verify elevations and/or dimensions on drawing prior to use. Report any discrepancies to Dillon Consulting Limited.
Do not scale dimensions from drawing.
Do not modify drawing, re-use it, or use it for purposes other than those intended at the time of its preparation without prior written permission from Dillon Consulting Limited.



3	27/01/2023	ISSUED FOR BUILDING PERMIT	CDP, DS
2	19/08/2022	RE-ISSUED FOR SITE PLAN CONTROL APPLICATION AND ZONING BY-LAW AMENDMENT	CDP, DS
1	12/02/2021	SPA / ZBA SUBMISSION	CDP

date: revision: by:

ALL drawing and specifications are the property of the architect. The contractor shall verify all dimensions and information on site and report any discrepancy to architect before proceeding.

Arch Corp - Orleans

1161 OLD MONTREAL RD.
ORLEANS ON, K4A 3N6

SITE SERVICING PLAN

scale: 1:250
drawn by: DS
reviewed by: CDP
job number: 21-2647
plot date: January 31, 2023
drawing number:

CIV-1

18897

UTILITY CROSSING

- 300mm STORM INV=64.37
150mm WATER T/P=63.87
LOWER WATERMAIN UNDER STORM PIPE TO PROVIDE 0.5m SEPARATION
- 450mm STORM INV=64.10
150mm WATER T/P=63.80
LOWER WATERMAIN UNDER STORM PIPE TO PROVIDE 0.5m SEPARATION
- 600mm STORM INV=64.365
150mm WATER T/P=63.86
LOWER WATERMAIN UNDER STORM PIPE TO PROVIDE 0.5m SEPARATION
- 600mm STORM INV=64.347
200mm SANITARY T/P=62.47
CLEAR=1.48m
- 150mm WATER BOTT/P=65.35
200mm SANITARY T/P=62.57
CLEAR=2.78m
- 150mm WATER B/P=65.45
750mm STORM T/P=64.866
CLEAR=0.56m
- 150mm WATER T/P=65.25
200mm STORM INV=65.75
CLEAR=0.5m

LEGEND:

- WV WATER VALVE
- HYD FIRE HYDRANT
- CB CATCH BASIN
- MH MANHOLE
- CBMH CATCHBASIN MANHOLE
- OF OVERFLOW MANHOLE

SANITARY SEWER INVERTS

MH-A - 1200 DIA
FRAME S25/COVER S24
EX. SW INV. 61.55m
E INV. 62.10m
RIM ELEV. 67.00m

MH-B - 1200 DIA WITH EXTERNAL DROP STRUCTURE
FRAME S25/COVER S24
NE INV. 62.97m TOP
W INV. 62.43m BOTTOM
RIM ELEV. 67.30m

SERVICE STUB
1.4m-200mm DIA. PVC BUILDING
SANITARY SERVICE AT 2.0%
INV. 63.00m

STORM SEWER INVERTS

EXISTING MH
NE INV. 63.308m
EX. SW INV. 63.258m (OUTLET)
RIM ELEV. 67.18m

MH 1 - 1200mm DIA.
FRAME S25/COVER S24.1
NW INV. 65.07
NE INV. 64.93
SE INV. 64.99m
RIM ELEV. 66.50m

MH 2 - 1200mm DIA.
FRAME S25/COVER S24.1
SW INV. 65.35m
NW INV. 64.90m
SE INV. 64.70m
RIM ELEV. 67.18m

MH 3 - 1800mm DIA.
FRAME S25/COVER S24.1
SE INV. 64.50m
NW INV. 64.35m
SW INV. 64.35m
RIM ELEV. 67.42m

MH 4B - 1800mm DIA.
FRAME S25/COVER S24.1
NW INV. 65.74m
NE INV. 64.28m
SW INV. 64.18m
RIM ELEV. 67.35m

MH 4A - 1800mm DIA.
FRAME S25/COVER S24.1
NW INV. 65.95m
NE INV. 64.17m
SW INV. 64.17m
RIM ELEV. 67.35m

MH 4 - 1800mm DIA.
FRAME S25/COVER S24.1
NE INV. 65.70m
NW INV. 64.12m
NW INV. 63.37m
RIM ELEV. 67.20m

MH 5 - 1200mm DIA.
FRAME S25/COVER S24.1
NW INV. 63.34m
SE INV. 63.31m
SW INV. 63.309m
RIM ELEV. 67.28m

MH 6 - 1500mm DIA.
FRAME S25/COVER S24.1
NW INV. 64.36m
NE INV. 64.08m
SE INV. 64.11m
RIM ELEV. 66.42m

MH 7 - 1200mm DIA.
FRAME S25/COVER S24.1
NW INV. 64.36m
NE INV. 64.26m
SE INV. 64.11m
RIM ELEV. 65.70

MH 8 - 1200mm DIA.
FRAME S25/COVER S24.1SW. NW
INV. 65.07m
SW INV. 64.83m
RIM ELEV. 66.55m

STORAGE CHAMBER 1 - 30m
2400mmx1800mm CONCRETE BOX
NW INV. 63.37m
SW INV. 63.34m

STORAGE CHAMBER 2 - 15m
2400mmx1800mm CONCRETE BOX
NW INV. 64.02m
SE INV. 63.37m
NW INV. 63.36m
SE INV. 63.36m

OF1 - OVERFLOW MANHOLE
INV 65.20m
RIM 67.11m

OF2 - OVERFLOW MANHOLE
INV 65.17m
RIM 67.00m

OF3 - OVERFLOW MANHOLE
INV 65.19m
RIM 66.95m

OF4 - OVERFLOW MANHOLE
INV 65.20m
RIM 66.80m

CB 10
600x600mm COVER S19.1
NE INV. 64.35m
RIM ELEV. 65.55m

CB 11
600x600mm COVER S19.1
SE INV. 64.65m
RIM ELEV. 65.85m

CB 12
600x600mm COVER S19.1
SE INV. 65.20m
RIM ELEV. 66.40m

CB 13
600x600mm COVER S19.1
NE INV. 65.17m
S INV. 65.12m
RIM ELEV. 66.50m

CB 14
600x600mm COVER S19.1
SE INV. 65.20m
RIM ELEV. 66.40m

CB 15
600x600mm COVER S19.1
NE INV. 65.90m
RIM ELEV. 67.00m

CB 16
600x600mm COVER S19.1
NE INV. 65.90m
RIM ELEV. 67.10m

CB 17
600x600mm COVER S19.1
NE INV. 66.00m
RIM ELEV. 67.20m

CB 18
600x600mm COVER S19.1
NE INV. 66.00m
RIM ELEV. 67.20m

CB 19
600x600mm COVER S19.1
NE INV. 66.00m
RIM ELEV. 67.20m

CB 20
600x600mm COVER S19.1
NW INV. 66.95m
RIM ELEV. 67.15m

CB 21
600x600mm COVER S19.1
NW INV. 64.08m
RIM ELEV. 67.20m

CB 22
600x600mm COVER S19.1
NW INV. 65.88m
RIM ELEV. 67.00m

CB 23
600x600mm COVER S19.1
NW INV. 65.80m
RIM ELEV. 67.00m

CBMH 24 - 1200mm DIA.
FRAME S25/COVER S24.1
NW INV. 66.13m
RIM ELEV. 67.80m

CB 25
600x600mm COVER S19.1
NW INV. 66.40m
RIM ELEV. 67.70m

CB 26
300mm# COVER S31
NW INV. 65.90m
RIM ELEV. 67.10m

CB 27
300mm# COVER S31
NW INV. 65.15m
RIM ELEV. 66.35m

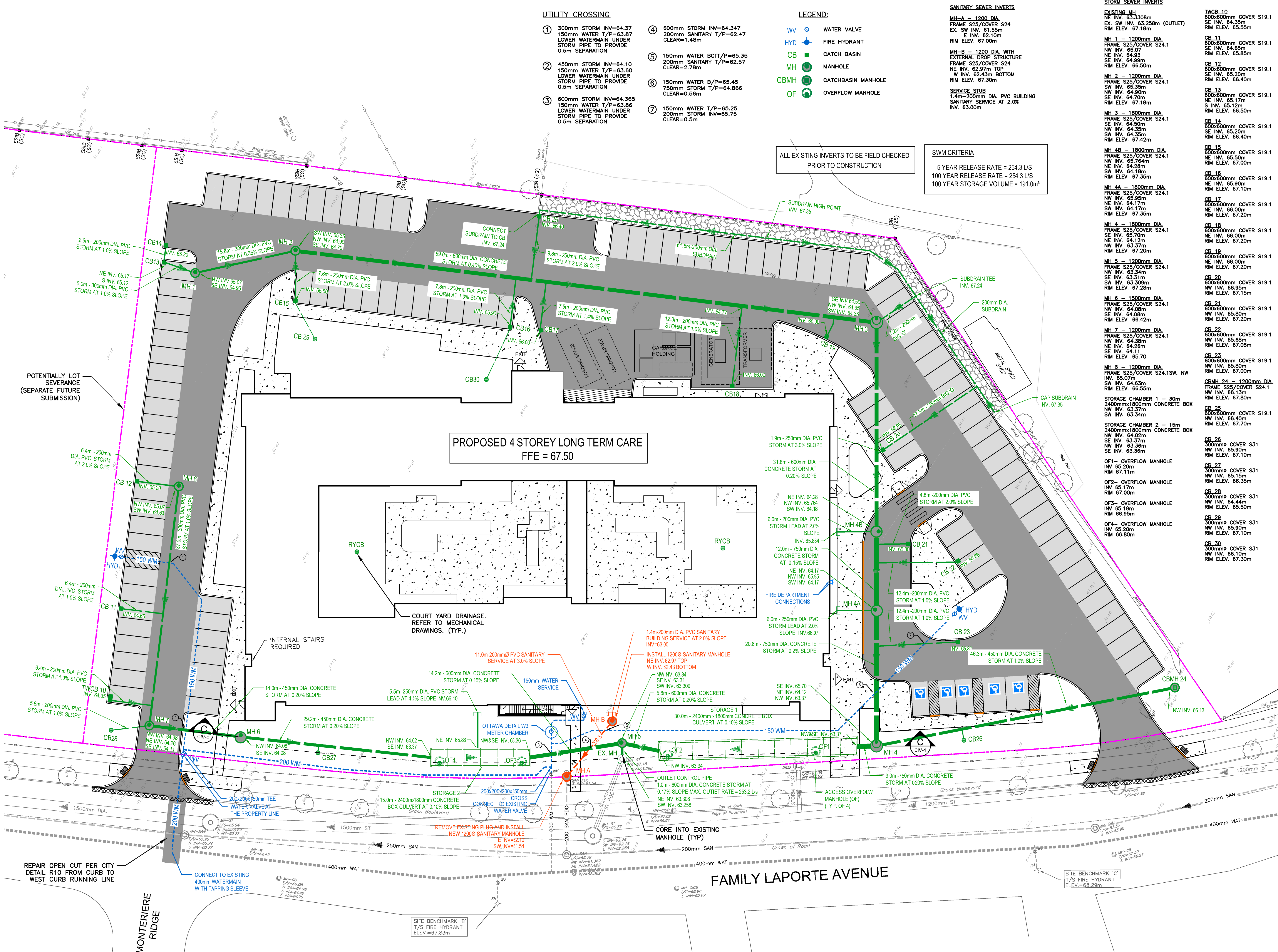
CB 28
300mm# COVER S31
NW INV. 64.44m
RIM ELEV. 65.50m

CB 29
300mm# COVER S31
NW INV. 66.10m
RIM ELEV. 67.10m

CB 30
300mm# COVER S31
NW INV. 66.10m
RIM ELEV. 67.30m

SWM CRITERIA
5 YEAR RELEASE RATE = 254.3 L/S
100 YEAR RELEASE RATE = 254.3 L/S
100 YEAR STORAGE VOLUME = 191.0m³

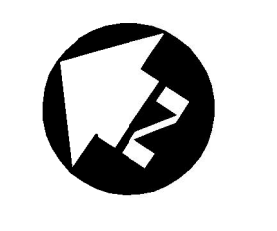
ALL EXISTING INVERTS TO BE FIELD CHECKED PRIOR TO CONSTRUCTION



FILENAME: C:\P\WORKING\DIRECTOR\PROJECTS\2021\2021-DIV-1\2021-01-31-10-00-00-CIV-CONV.DWG PLOTTED BY: STODIA, DORINA
 PLOT DATE: 2023-01-31 @ 4:08:36 PM PLOT SCALE: 1:1 PLOT STYLE: DILLON-STD-A0.DWG

Conditions of Use

Verify elevations and/or dimensions on drawing prior to use. Report any discrepancies to Dillon Consulting Limited.
Do not scale dimensions from drawing.
Do not modify drawing, re-use it, or use it for purposes other than those intended at the time of its preparation without prior written permission from Dillon Consulting Limited.



3	27/01/2023	ISSUED FOR BUILDING PERMIT	CDP, DS
2	19/08/2022	RE-ISSUED FOR SITE PLAN CONTROL APPLICATION AND ZONING BY-LAW AMENDMENT	CDP, DS
1	12/02/2021	SPA / ZBA SUBMISSION	CDP
#	date:	revision:	by:

All drawing and specifications are the property of the architect. The contractor shall verify all dimensions and information on site and report any discrepancy to architect before proceeding.

Arch Corp - Orleans

1161 OLD MONTREAL RD.
ORLEANS ON, K4A 3N6

SITE GRADING PLAN

scale: 1 : 250
drawn by: DS
reviewed by: CDP
job number: 21-2647
plot date: January 31, 2023
drawing number:

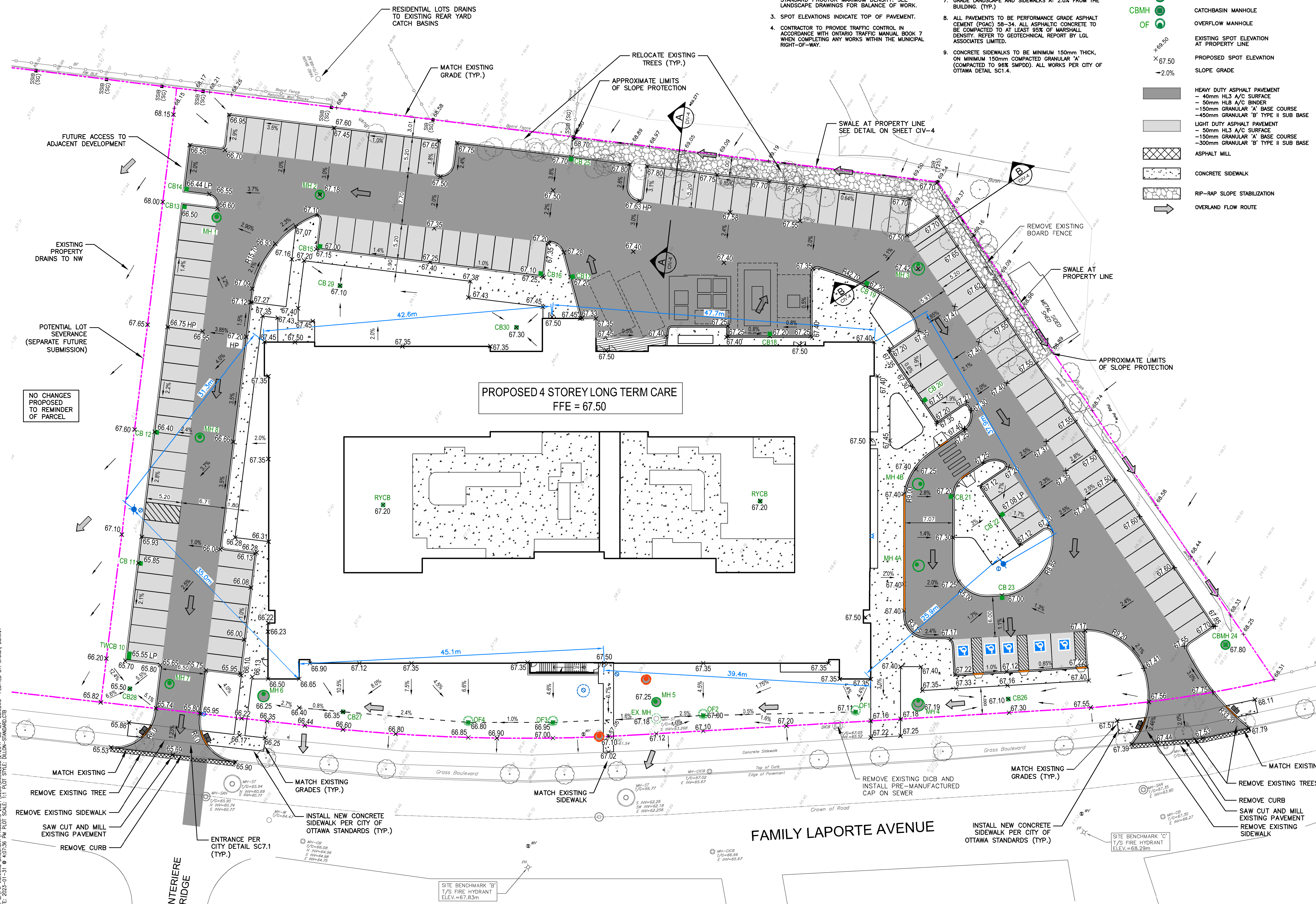
CIV-2

GENERAL GRADING NOTES:

- CONTRACTOR TO CONSTRUCT SITE TO WITHIN 5mm OF DESIGN GRADES AND DIMENSIONS, UNLESS OTHERWISE NOTED.
- ALL PROPOSED LANDSCAPE AREAS WITHIN CURB AND PROPERTY LIMITS TO BE GRADED 300mm BELOW TOP OF CURB WITH APPROVED FILL MATERIALS, MECHANICALLY COMPACTED TO 98% STANDARD PROCTOR MAXIMUM DENSITY. SEE LANDSCAPE DRAWINGS FOR BALANCE OF WORK.
- SPOT ELEVATIONS INDICATE TOP OF PAVEMENT.
- CONTRACTOR TO PROVIDE TRAFFIC CONTROL IN ACCORDANCE WITH ONTARIO TRAFFIC MANUAL BOOK 7 WHEN COMPLETING ANY WORKS WITHIN THE MUNICIPAL RIGHT-OF-WAY.
- ALL LINE PAINTING TO BE A DURABLE WATER BORNE TRAFFIC PAINT. PAVEMENT MARKINGS SHALL BE INSTALLED IN ACCORDANCE TO MANUFACTURER'S SPECIFICATIONS.
- ALL EXISTING TREES AND VEGETATION TO BE REMOVED PRIOR TO CONSTRUCTION.
- GRADE LANDSCAPE AND SIDEWALKS AT 2.0% FROM THE BUILDING. (TYP.)
- ALL PAVEMENTS TO BE PERFORMANCE GRADE ASPHALT CEMENT (PGAC) 58-34. ALL ASPHALTIC CONCRETE TO BE COMPACTED TO AT LEAST 95% OF MARSHALL DENSITY. REFER TO GEOTECHNICAL REPORT BY LGL ASSOCIATES LIMITED.
- CONCRETE SIDEWALKS TO BE MINIMUM 150mm THICK, ON MINIMUM 150mm COMPACTED GRANULAR 'A' (COMPACTED TO 98% SMPDD). ALL WORKS PER CITY OF OTTAWA DETAIL SC1.4.

LEGEND:

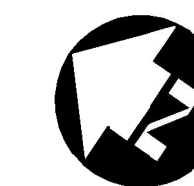
- WATER VALVE
- FIRE HYDRANT
- CATCH BASIN
- MANHOLE
- CATCHBASIN MANHOLE
- OVERFLOW MANHOLE
- EXISTING SPOT ELEVATION AT PROPERTY LINE
- PROPOSED SPOT ELEVATION
- SLOPE GRADE
- HEAVY DUTY ASPHALT PAVEMENT
- 40mm HL3 A/C SURFACE
- 50mm HL3 A/C BINDER
- 150mm GRANULAR 'A' BASE COURSE
- 450mm GRANULAR 'B' TYPE II SUB BASE
- LIGHT DUTY ASPHALT PAVEMENT
- 50mm HL3 A/C SURFACE
- 150mm GRANULAR 'A' BASE COURSE
- 300mm GRANULAR 'B' TYPE II SUB BASE
- ASPHALT MILL
- CONCRETE SIDEWALK
- RIP-RAP SLOPE STABILIZATION
- OVERLAND FLOW ROUTE



FILENAME: C:\P\WORKING DIRECTORIES\PROJECTS_2021\2025\0652260\12647-00-CIV-COM.DWG PLOTTED BY: STOCK, DORINA
 PLOT DATE: 2023-01-31 4:07:36 PM PLOT SCALE: 1:1 PLOT STYLE: DILLON-STANDARD.CTB

Conditions of Use

Verify elevations and/or dimensions on drawing prior to use. Report any discrepancies to Dillon Consulting Limited.
Do not scale dimensions from drawing.
Do not modify drawing, re-use it, or use it for purposes other than those intended at the time of its preparation without prior written permission from Dillon Consulting Limited.



#	date:	revision:	by:
3	27/01/2023	ISSUED FOR BUILDING PERMIT CONTROL APPLICATION AND ZONING BY-LAW AMENDMENT	CDP, DS
2	19/08/2022	RE-ISSUED FOR SITE PLAN CONTROL APPLICATION AND ZONING BY-LAW AMENDMENT	CDP, DS
1	12/02/2021	SPA / ZBA SUBMISSION	CDP

ALL drawing and specifications are the property of the architect. The contractor shall verify all dimensions and information on site and report any discrepancy to architect before proceeding.

Arch Corp - Orleans

1161 OLD MONTREAL RD.
ORLEANS ON, K4A 3N6

SOIL EROSION CONTROL PLAN

scale: 1:250
drawn by: DS
reviewed by: CDP
job number: 21-2647
plot date: January 31, 2023
drawing number:

CIV-3

18897

NOTES:

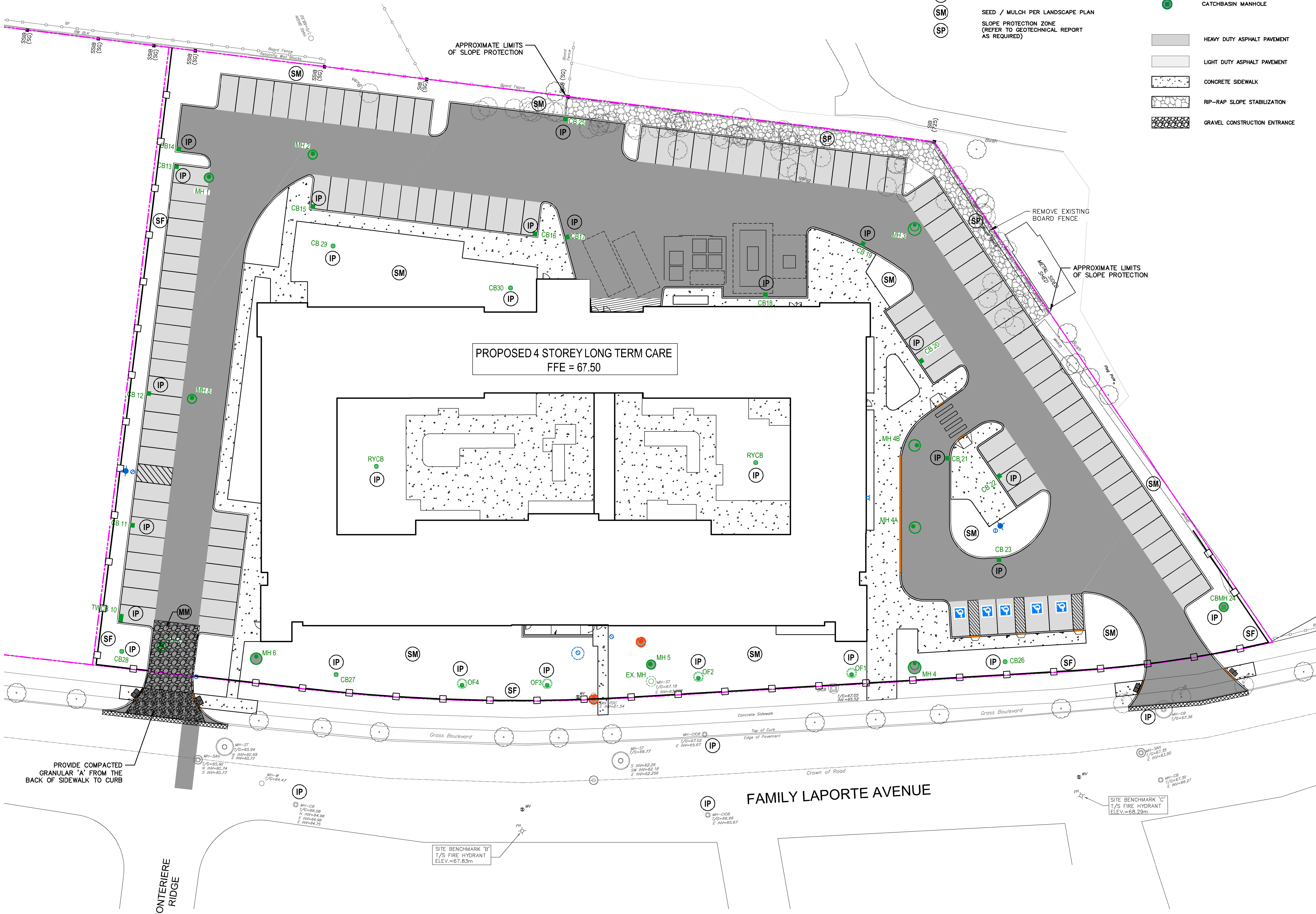
- ALL EROSION CONTROL MEASURES TO BE INSPECTED AND MAINTAINED BY THE CONTRACTOR ON A DAILY BASIS.
- REFER TO SHEET CIV-5 FOR EROSION CONTROL NOTES.

LEGEND:

- INLET PROTECTION
- SILT FENCE PER OPSD 219.110
- CONSTRUCTION ENTRANCE/ MUD MAT
- SEED / MULCH PER LANDSCAPE PLAN
- SLOPE PROTECTION ZONE (REFER TO GEOTECHNICAL REPORT AS REQUIRED)

LEGEND:

- WATER VALVE
- FIRE HYDRANT
- CATCH BASIN
- MANHOLE
- CATCHBASIN MANHOLE
- HEAVY DUTY ASPHALT PAVEMENT
- LIGHT DUTY ASPHALT PAVEMENT
- CONCRETE SIDEWALK
- RIP-RAP SLOPE STABILIZATION
- GRAVEL CONSTRUCTION ENTRANCE



FILENAME: C:\P\WORKING DIRECTORY\PROJECTS\2021\2647\2647-01-CIV-CORRIDOR PLOTTED BY: STOCK, DORINA
 PLOT DATE: 2023-01-31 @ 3:51:01 PM PLOT SCALE: 1:1 PLOT STYLE: DILLON-STANDARD.CTB

PROVIDE COMPACTED GRANULAR 'A' FROM THE BACK OF SIDEWALK TO CURB

SITE BENCHMARK 'B'
1/8" FIRE HYDRANT
ELEV.=67.83m

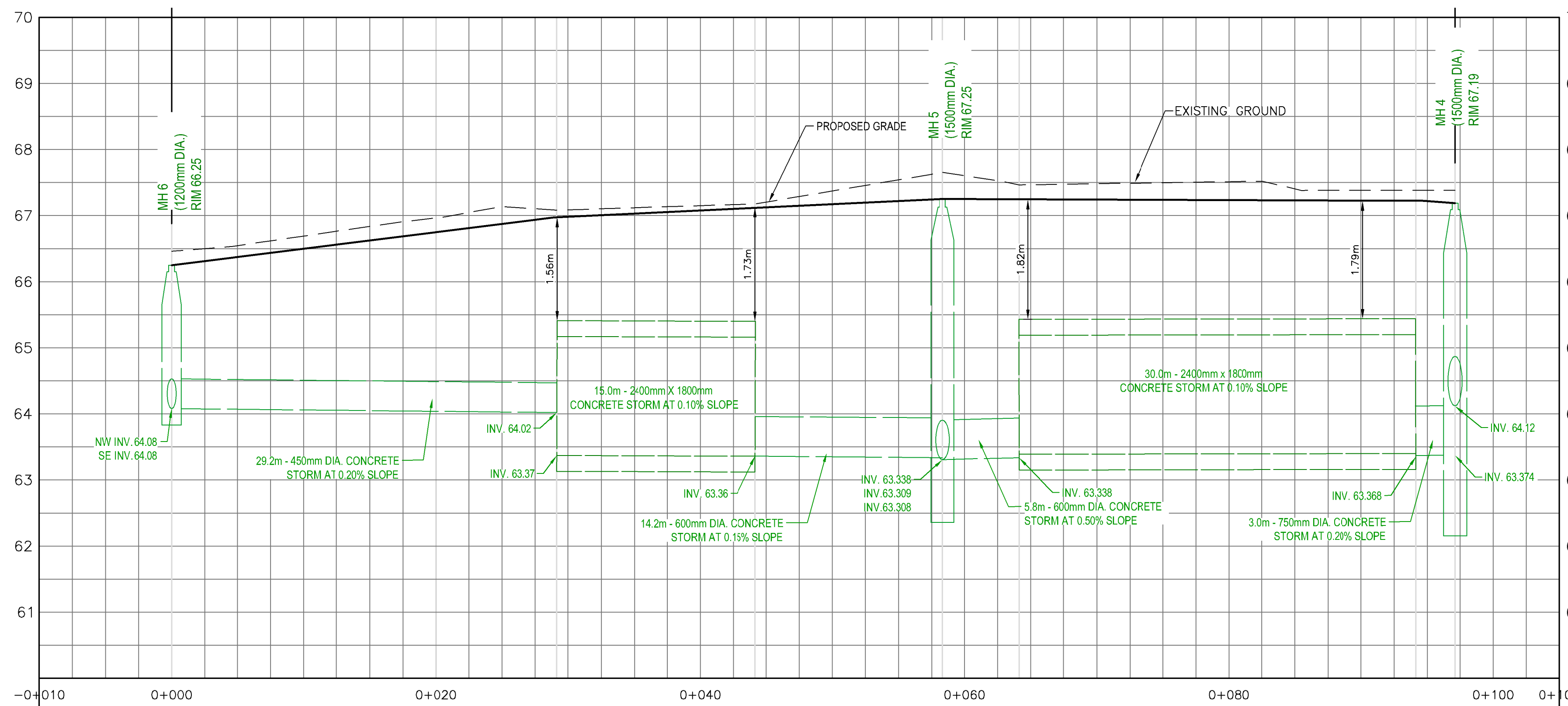
SITE BENCHMARK 'C'
1/8" FIRE HYDRANT
ELEV.=68.29m

Conditions of Use

Verify elevations and/or dimensions on drawing prior to use. Report any discrepancies to Dillon Consulting Limited.

Do not scale dimensions from drawing.

Do not modify drawing, re-use it, or use it for purposes other than those intended at the time of its preparation without prior written permission from Dillon Consulting Limited.



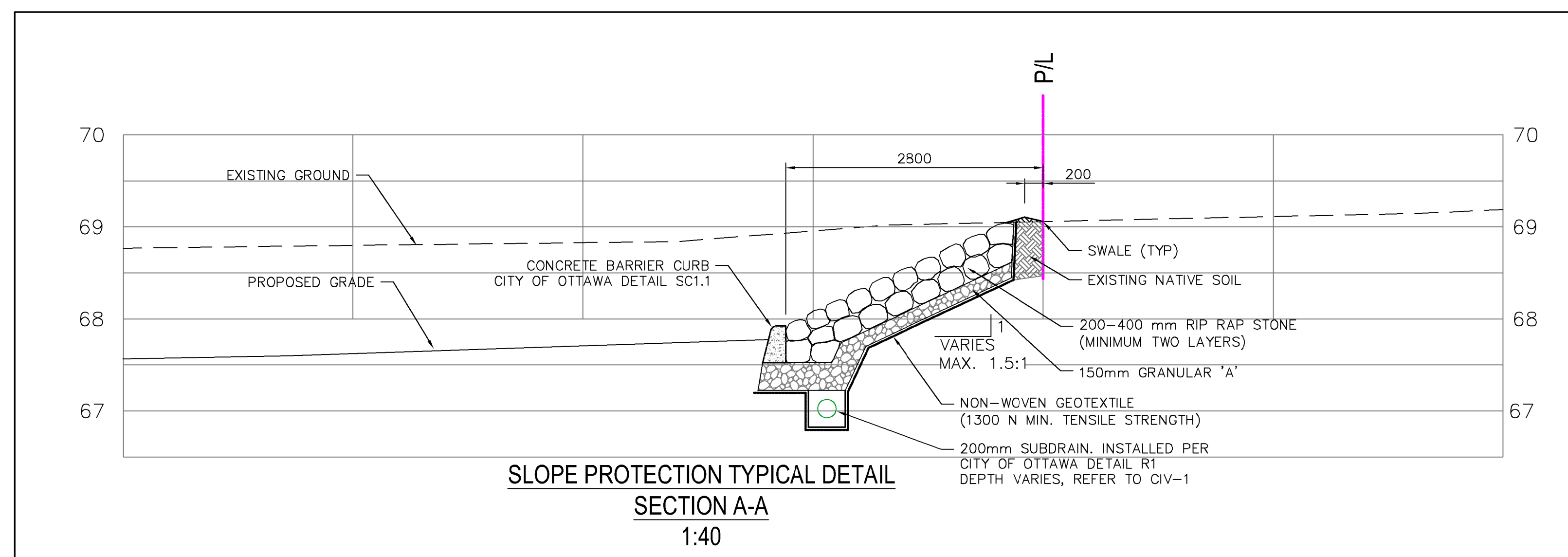
STORM STORAGE CHAMBERS - SECTION C-C

HORIZ: 1:250
VERT: 1:50

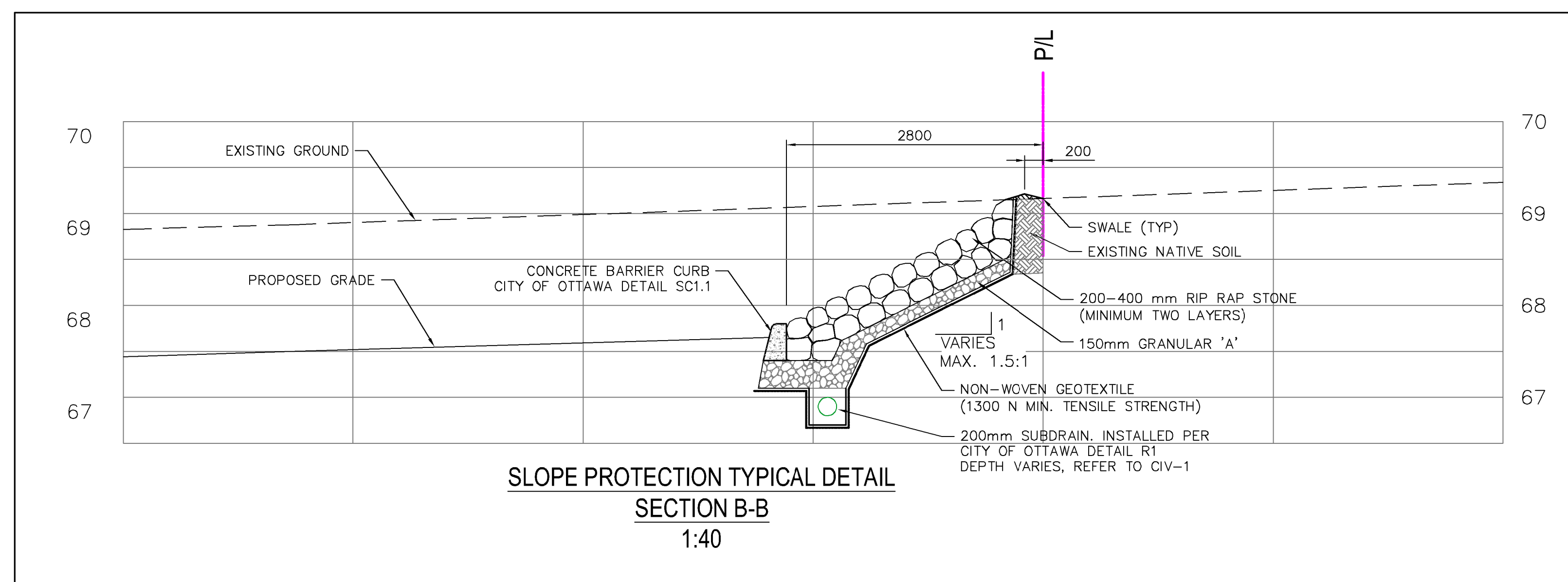
ALL EXISTING INVERTS TO BE FIELD CHECKED PRIOR TO CONSTRUCTION

GENERAL UTILITY NOTES:

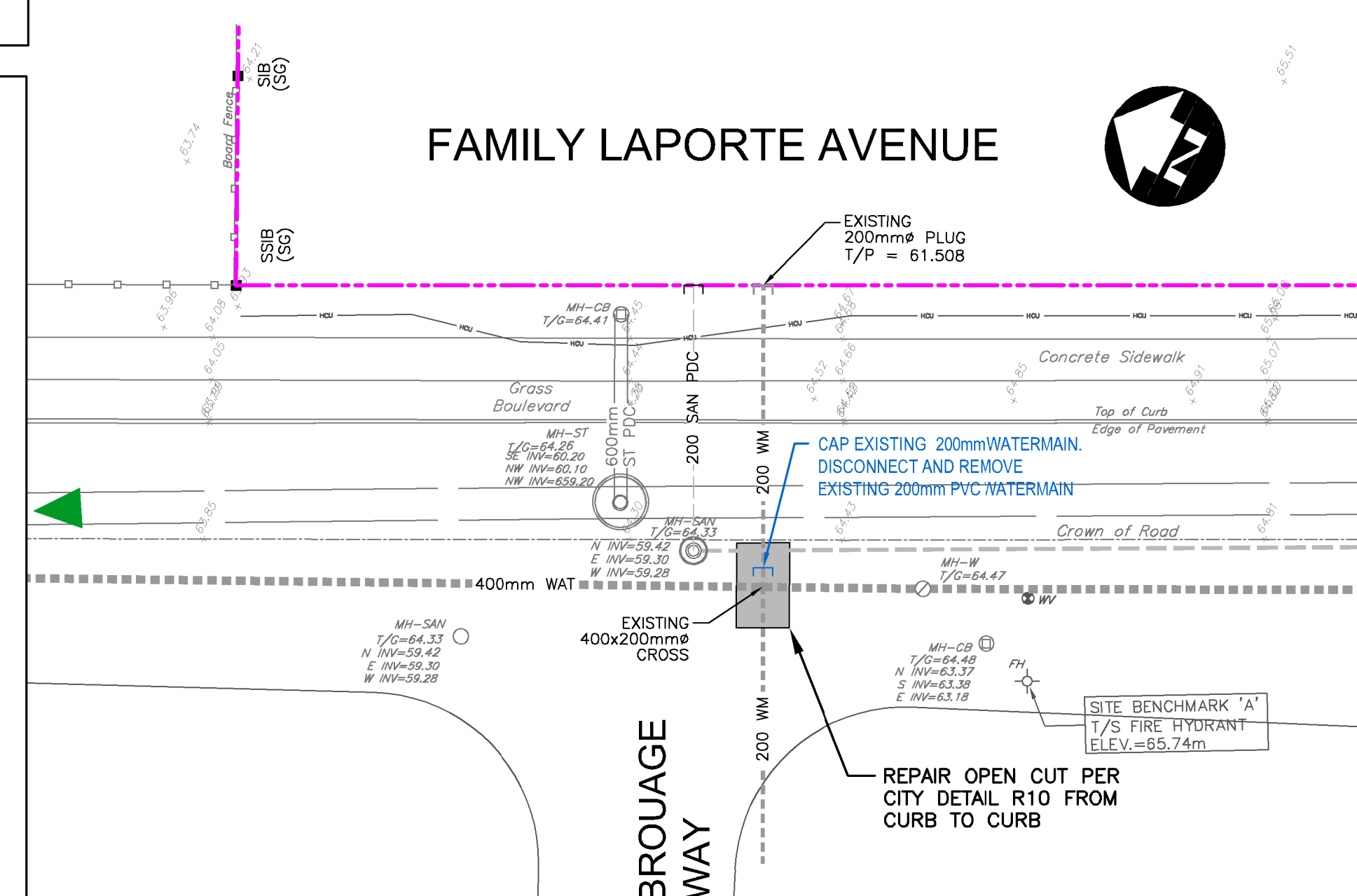
- THE OWNER AND DILLON CONSULTING LIMITED DO NOT GUARANTEE THE ACCURACY OF THE UTILITIES SHOWN ON THE DRAWINGS. OTHER UTILITIES MAY BE PRESENT OR THE UTILITIES SHOWN MAY DIFFER IN SIZE OR LOCATION FROM THOSE SHOWN. THE CONTRACTOR SHALL NOTE THAT SERVICES FROM THE MAIN LINES ARE NOT SHOWN. THE CONTRACTOR ASSUMES FULL RESPONSIBILITY TO CONTACT THE VARIOUS UTILITY COMPANIES AND TO REPAIR ANY DAMAGE IT MAY CAUSE TO THESE UTILITIES OR TO OTHER THIRD PARTIES. THE CONTRACTOR AGREES TO INDEMNIFY THE OWNER AND DILLON CONSULTING LIMITED AGAINST ANY CLAIMS WHICH MAY ARISE FROM THE CONTRACTOR'S ACTIONS.
- ALL WORKS SHALL COMPLY WITH THE CITY OF OTTAWA STANDARDS.
- DIMENSIONS AND/OR COORDINATES ARE TO BACK OF CURB, OUTSIDE FACE OF BUILDING, EDGE OF PAVEMENT OR CENTER OF STRUCTURE.
- ALL NEW WATER, STORM & SANITARY SEWER SERVICES TO BE INSTALLED TO 1.5m FROM THE BUILDING FACE AND CAPPED.
- MINIMUM SLOPE FOR STORM SEWER SERVICES TO BE 2% UNLESS NOTED OTHERWISE.
- CONTRACTOR TO USE "T-WYE" CONNECTIONS WHEN CONNECTING CATCHBASIN LEADS TO THE MAINLINE SEWER.
- ALL WATERMANS AND SERVICES TO HAVE A MINIMUM OF 2.50m OF COVER.
- INSTALL RAIN CATCHERS ON ALL SANITARY MANHOLES.
- ALL EXISTING TREES AND VEGETATION TO BE REMOVED PRIOR TO CONSTRUCTION.
- ALL WORK WITHIN FAMILY LAPORTE AVENUE RIGHT-OF-WAY AND/OR ON CITY OF OTTAWA. WATERMANS TO BE COMPLETED IN THE PRESENCE OF MUNICIPAL STAFF OR INSPECTOR.
- ALL DISTURBED AREAS WITHIN FAMILY LAPORTE AVENUE EXISTING RIGHT-OF-WAY TO BE RESTORED TO EXISTING OR BETTER CONDITION.
- ALL RESTORATIONS PER THE LANDSCAPING PLAN.
- ALL WORKS TO BE CONSTRUCTED TO A TOLERANCE OF 5mm±.
- ALL DIMENSIONS AND RADII ARE TO CONSTRUCTION BASELINE OR EDGE OF PAVEMENT.
- SEWER BEDDING PER MANUFACTURER RECOMMENDATIONS AND CITY OF OTTAWA STANDARDS. PIPE BEDDING TO BE A MINIMUM OF 150mm THICK. GRANULAR 'A' SHALL BE USED AS PIPE BEDDING, AT THE SPRINGLINE OF THE PIPE, AND A 300mm THICK LAYER ABOVE THE OVERT. REFER TO GEOTECHNICAL REPORT BY LRL ASSOCIATES LTD. ALL BEDDING TO BE COMPACTED TO A MINIMUM 95% SMPDD.
- WHERE WET SOIL CONDITIONS ARE ENCOUNTERED, THE USE OF "CLEAR STONE" BEDDING (19mm) MAY BE CONSIDERED AS A SUBSTITUTE IN CONJUNCTION WITH A GEOTEXTILE FILTER (TERRAFIX 270R). REFER TO GEOTECHNICAL REPORT BY LRL ASSOCIATES LTD.
- ALL SANITARY SEWER ARE TO BE PVC DR-35 UNLESS NOTED OTHERWISE.
- ALL STORM SEWERS 375mm DIA. OR SMALLER TO BE PVC DR-35. ALL STORM SEWERS 450mm OR LARGER TO BE CONCRETE A257.2 65-D UNLESS SHOWN OTHERWISE ON PLANS OR SPECIFICATIONS.
- ALL CATCH BASIN LEADS TO BE PVC DR-35 AND DIAMETER OF LEADS:
 - FROM SINGLE TO BE 200mm DIA.
 - FROM DOUBLE TO BE 250mm DIA.
 - FROM BCB TO BE 200mm DIA.
 - *UNLESS OTHERWISE SHOWN.
- CONNECTIONS TO PVC PIPE: THE CONTRACTOR SHALL BE REQUIRED TO USE ONLY PLANT MANUFACTURED TEES WHEN INSTALLING ALL CONNECTION. THE ANGULAR RISE OF THE CONNECTIONS SHALL BE BETWEEN 5° AND 85°. IF THE ANGULAR RISE EXCEED 45°, THE CONTRACTOR SHALL PROVIDE AN ADDITIONAL PVC COUPLING WITH STOP IMMEDIATELY BEYOND THE FITTING. A SHORT SECTION OF PVC PIPE IS TO BE USED TO CONNECT THE COUPLING TO THE FITTING. THE COUPLING SHALL REST DIRECTLY UPON THE BELL PORTION OF THE FITTING.
- CONNECTIONS ON CONCRETE PIPE: ALL CONNECTIONS GREATER THAN 250mm DIAMETER TO CONCRETE PIPES SHALL BE MADE WITH PRE-MANUFACTURED CONCRETE TEES. CONNECTIONS FOR 250mm AND SMALLER TO BE MADE WITH PRE-MANUFACTURED BOOTS. THE USE OF WINGED PVC AND COATED BELL WILL NO BE PERMITTED IN TAPPING CONCRETE PIPE.
- ALL WATERMANS INSTALLED VIA OPEN CUT TO BE 100mm DIA. TO 200mm DIA. TO BE PVC AWWA C-900 CLASS 150 DR18.
- ALL WATERMANS CROSSING MUNICIPAL ROAD TO BE INSTALLED VIA OPEN CUT TRENCH EXCAVATION. CONTRACTOR TO COORDINATE WITH CITY OF OTTAWA FOR REQUIRED ROAD CLOSURE AND PERMITS.
- ALL WATERMAIN WITH LESS THAN 2.50m COVER SHALL HAVE INSULATION PER CITY OF OTTAWA W22 DETAIL.
- AN GREASE AND OIL INTERCEPTOR ON ALL FIXTURES IS REQUIRED F0 RFACILITIES WHERE FOOD MAY BE PREPARED AS PER CITY OF OTTAWA SEWER USE P/LAW SECTION 15.
- THE SANITARY AND STORM BACKFLOW PREVENTORS TO BE PROVIDED AS PER CITY OF OTTAWA.



SLOPE PROTECTION TYPICAL DETAIL SECTION A-A
1:40



SLOPE PROTECTION TYPICAL DETAIL SECTION B-B
1:40



#	date:	revision:	by:
3	27/01/2023	ISSUED FOR BUILDING PERMIT	CDP, DS
2	19/08/2022	RE-ISSUED FOR SITE PLAN CONTROL APPLICATION AND ZONING BY-LAW AMENDMENT	CDP, DS
1	12/02/2021	SPA / ZBA SUBMISSION	CDP



Arch Corp - Orleans

1161 OLD MONTREAL RD.
ORLEANS ON, K4A 3N6

NOTES, CROSS SECTION AND DETAILS

scale: 1:250
drawn by: DS
reviewed by: CDP
job number: 21-2647
plot date: January 31, 2023
drawing number:

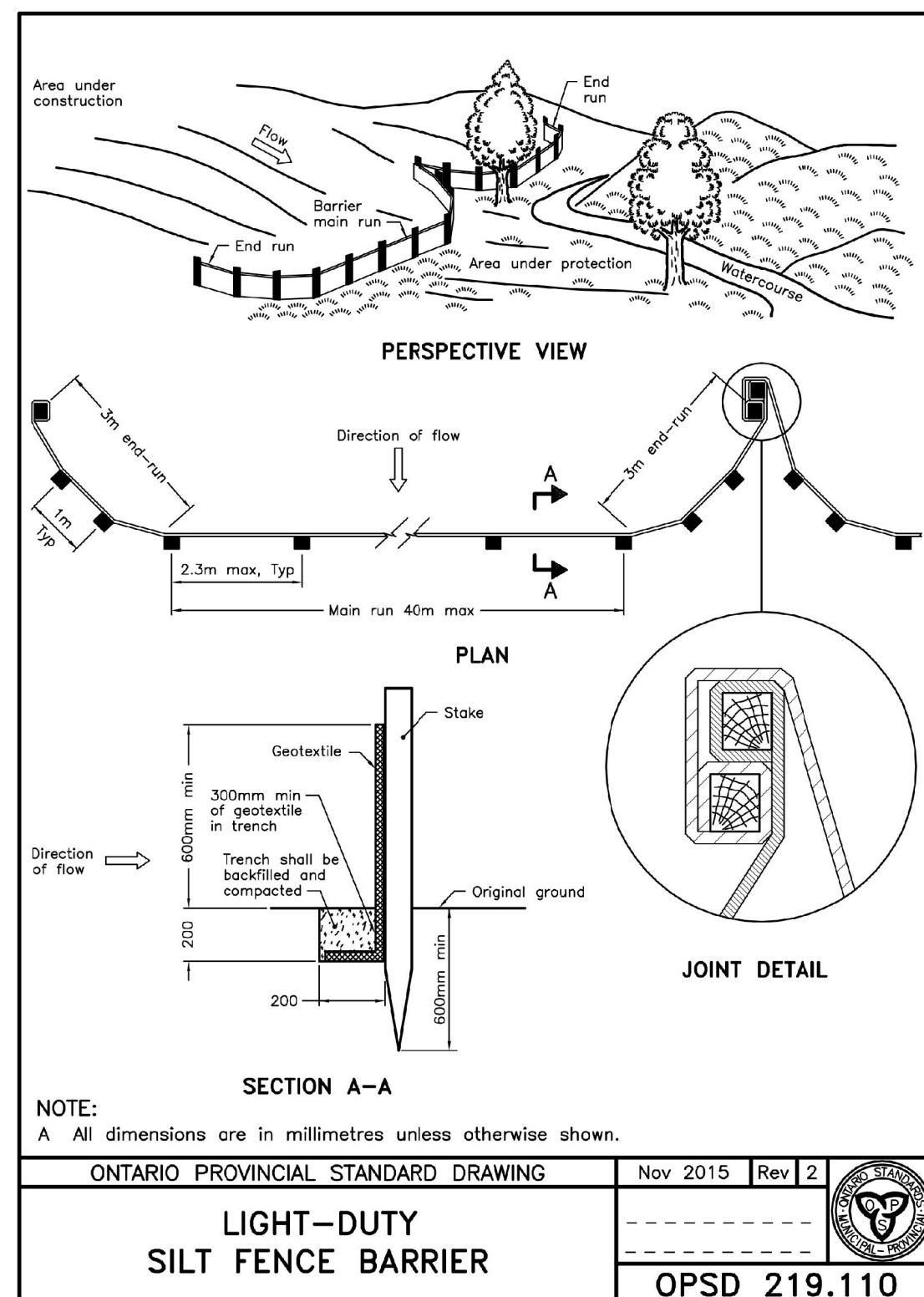
CIV-4

Conditions of Use

Verify elevations and/or dimensions on drawing prior to use. Report any discrepancies to Dillon Consulting Limited.

Do not scale dimensions from drawing.

Do not modify drawing, re-use it, or use it for purposes other than those intended at the time of its preparation without prior written permission from Dillon Consulting Limited.



EROSION AND SEDIMENT CONTROL

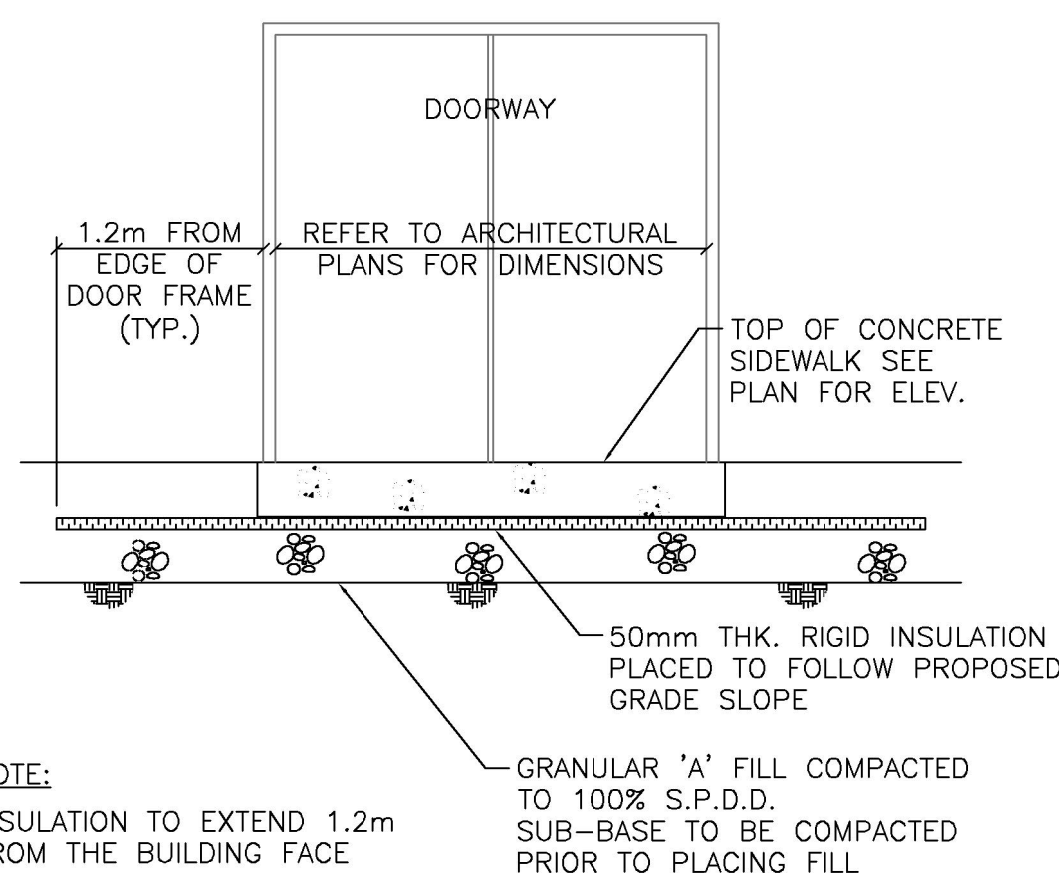
GENERAL NOTES:

1. PROVIDE TEMPORARY DRAINAGE AND PUMPING AS NECESSARY TO KEEP EXCAVATIONS AND SITE FREE FROM WATER. TEMPORARY PUMPING TO BE COMPLETED IN ACCORDANCE WITH OPSS 518 "CONSTRUCTION SPECIFICATIONS FOR CONTROL OF WATER FROM DEWATERING OPERATIONS". DO NOT DISCHARGE WATER CONTAINING SUSPENDED MATERIALS INTO WATERCOURSES, SEWER OR DRAINAGE SYSTEMS. CONTROLLED DISPOSAL OR RUNOFF OF WATER CONTAINING SUSPENDED MATERIALS OR OTHER HARMFUL SUBSTANCES MUST BE COMPLETED IN ACCORDANCE WITH FEDERAL, PROVINCIAL AND MUNICIPAL REQUIREMENTS. SEE ALSO DEWATERING NOTES.
2. WORKS AROUND WATERCOURSES AND WETLANDS SHALL BE COMPLETED IN ACCORDANCE WITH THE MOST RECENT VERSION OF THE CONSERVATION AUTHORITY, MUNICIPAL, PROVINCIAL AND FEDERAL BEST MANAGEMENT PRACTICES. FUELING OPERATIONS SHALL NOT BE CONDUCTED AND FUELING TANK SHALL NOT BE LOCATED WITHIN 30.0m OF A ROADSIDE DITCH, MUNICIPAL DRAIN, NATURAL WATERCOURSE, WETLAND OR FIELD TILE.
3. INSTALLATION OF TEMPORARY EROSION AND SEDIMENT CONTROL MEASURES SHALL BE COMPLETED IN ACCORDANCE WITH THE CITY OF OTTAWA STANDARDS AND OPSS 577 "CONSTRUCTION SPECIFICATION FOR TEMPORARY EROSION AND SEDIMENT CONTROL MEASURES", EROSION AND SEDIMENT CONTROL GUIDELINES FOR URBAN CONSTRUCTION (DECEMBER 2006) AND THE CONTRACT DRAWINGS.
4. THE CONTRACTOR IS RESPONSIBLE FOR MAINTAINING TEMPORARY EROSION AND POLLUTION CONTROL FEATURES THROUGHOUT THE PROJECT. THE CONTRACTOR IS RESPONSIBLE FOR INSPECTING ALL TEMPORARY EROSION CONTROLS AFTER EACH RAINFALL AND AT LEAST DAILY DURING PROLONGED RAINFALL AND CLEARED OF ACCUMULATED SEDIMENT WHEN 50% OF CAPACITY IS REACHED. SILT FENCES ARE TO BE INSTALLED ALONG THE PROPERTY LINE. STRAW BALES SHALL BE INSTALLED IN ADDITION TO SILT FENCING WHEN FLOW IS CHANNLED IN A PARTICULAR DIRECTION TO THE RECEIVING COURSE OR WHERE WARRANTED. SILT FENCES SHALL NOT BE PERMITTED IN AREAS OF STANDING WATER. ONCE A VIGOROUS GROWTH IS ESTABLISHED IN THE RE-VEGETATED AREAS THE CONTROLS AND ACCUMULATED SEDIMENT SHALL BE REMOVED IN THEIR ENTIRETY WITHIN 30 DAYS OF DIRECTION FROM THE ENGINEER.
5. INLET CONTROL DEVICES TO BE INSTALLED ON ALL NEW SITE CATCH BASINS, AND ON ADJACENT ROADWAY CATCHBASINS THAT ARE SUBJECT TO SITE RUNOFF. INLET PROTECTION DEVICES (IP) TO BE CITY OF OTTAWA APPROVED INSERTS SUCH AS STORMSOK, SILTSAK, FLEXSTORM OR SENTINEL. FILTER BAGS ARE TO BE INSPECTED REGULARLY AND CLEANED AFTER EACH RAIN EVENT. INLET FILTERS TO REMAIN IN PLACE UNTIL FINAL RESTORATION HAS ESTABLISHED.
6. TEMPORARY CONSTRUCTION ENTRANCE TO FAMILLE-LAPORTE AVENUE. CONSTRUCTION ENTRANCE TO CONSIST OF A SOIL STABILIZATION GEOTEXTILE FABRIC COVERED WITH MINIMUM 300mm THICK STONE RIP-RAP MAT. RIP-RAP TO BE 100mm TO 200mm IN SIZE. IF THE CONSTRUCTION ENTRANCE DOES NOT SUFFICIENTLY PREVENT SEDIMENT FROM BEING TRACKED ONTO ADJACENT ROADWAYS, A WHEEL WASH MAY BE REQUIRED.

SEQUENCING NOTES:

1. CONTRACTOR SHALL SUBMIT AN EROSION AND SEDIMENT CONTROL PLAN TO THE ENGINEER FOR APPROVAL.
2. INSTALL SILT CONTROL FENCING AROUND PERIMETER OF THE SITE AND CONSTRUCTION ENTRANCE.
3. STRIP TOPSOIL FROM WITHIN THE LIMITS OF GENERAL EARTHWORKS AND STORE TEMPORARILY WITHIN THE DESIGNATED AREAS AS DIRECTED BY THE OWNER.
4. REDISTRIBUTE TOPSOIL ON SITE AND RESTORE GRASSSED AREAS AS PER CONTRACT SPECIFICATIONS.
5. ALL EROSION CONTROL MEASURES TO BE MONITORED AS A MINIMUM ON A WEEKLY BASIS AND KEPT IN A FUNCTIONAL STATE.
6. ONCE A VIGOROUS GROWTH IS ESTABLISHED IN THE REVEGETATED AREAS, THE CONTROLS AND ACCUMULATED SEDIMENT SHALL BE REMOVED IN THEIR ENTIRETY WITHIN 30 DAYS OF DIRECTION FROM THE ENGINEER.

THE FOLLOWING CITY OF OTTAWA STANDARD DETAILS SHALL APPLY TO THIS CONTRACT	
SC1.1	CONCRETE BARRIER CURB FOR GRANULAR BASE PAVEMENT (MODIFIED OPSD-600.110)
SC1.4	CONCRETE BARRIER CURB WITH SIDEWALK
SC5	SIDEWALK CONSTRUCTION JOINTS
SC7.3	TWSI (TACTILE WALKING SURFACE INDICATOR) DETAIL
SC7.4	CURB RETURN ENTRANCES
S5	STANDARD TRENCH TERMINOLOGY
S6	SINGLE TRENCH (SEWER AND SEWER SERVICES)
S10	SUPPORT DETAIL FOR EXISTING UTILITY CROSSING OR WATERMAIN TRENCH
S19	HEAVY DUTY "FISH" TYPE SQUARE CATCH BASIN COVER (MODIFIED OPSD-400.07)
S19.1	HEAVY DUTY "FISH" TYPE SQUARE CATCH BASIN COVER
S24.1	STANDARD CIRCULAR STORM MAINTENANCE HOLE COVER
S25	STANDARD CIRCULAR FRAME FOR MAINTENANCE HOLES
S31	CATCH BASIN - ELBOW FOR REAR YARD DITCHED PIPE AND LANDSCAPING APPLICATIONS
R1	SUBDRAIN INSTALLATION DETAIL
R10	STANDARD TRENCH REINSTATEMENT IN PAVED SURFACE
W22	THERMAL INSULATION FOR WATERMAINS IN SHALLOW TRENCHES
W25.2	WATERMAIN CROSSING OVER SEWER
W25.4	THRUST BLOCK DIMENSION TABLES FOR PVC AND DI PIPE 400mm AND UNDER
W25.6	TABLES OF RESTRAINED LENGTHS FOR PVC AND DI PIPE 400mm AND UNDER
W3	CIRCULAR CHAMBER GATE VALVES
W40	PROTECTION FOR PVC WATERMAIN SYSTEM
W55	CONNECTION BETWEEN TRACER WIRE AND FITTING BOLT



SIDEWALK AT DOORWAY DETAIL
NOT TO SCALE

GENERAL NOTES:

1. THE OWNER AND DILLON CONSULTING LIMITED DO NOT GUARANTEE THE ACCURACY OF THE UTILITIES SHOWN ON THE DRAWINGS. OTHER UTILITIES MAY BE PRESENT OR THE UTILITIES SHOWN MAY DIFFER IN SIZE OR LOCATION FROM THOSE SHOWN. THE CONTRACTOR SHALL NOTE THAT SERVICES FROM THE MAIN LINES ARE NOT SHOWN. THE CONTRACTOR ASSUMES FULL RESPONSIBILITY TO CONTACT THE VARIOUS UTILITY COMPANIES AND TO REPAIR ANY DAMAGE IT MAY CAUSE TO THESE UTILITIES OR TO OTHER THIRD PARTIES. THE CONTRACTOR AGREES TO INDEMNIFY THE OWNER AND DILLON CONSULTING LIMITED AGAINST ANY CLAIMS WHICH MAY ARISE FROM THE CONTRACTOR'S ACTIONS.
2. ALL WORKS SHALL COMPLY WITH THE CITY OF OTTAWA OR OPS STANDARDS.

ALL EXISTING INVERTS TO BE FIELD CHECKED PRIOR TO CONSTRUCTION

THE FOLLOWING ONTARIO PROVINCIAL STANDARD DETAILS SHALL APPLY TO THIS CONTRACT	
701.010	PRECAST CONCRETE MAINTENANCE HOLE - 1200mm DIAMETER
705.010	PRECAST CONCRETE CATCH BASIN - 600x600mm
708.020	SUPPORT FOR PIPE AT CATCH BASIN OR MAINTENANCE HOLE
708.030	CATCH BASIN CONNECTION FOR FLEXIBLE MAIN PIPE SEWER
802.010	FLEXIBLE PIPE EMBEDMENT AND BACKFILL EARTH EXCAVATION
802.030	RIGID PIPE BEDDING, COVER, AND BACKFILL TYPE 1 OR 2 - EARTH EXCAVATION

#	date:	revision:	by:
3	27/01/2023	ISSUED FOR BUILDING PERMIT	CDP, DS
2	19/08/2022	RE-ISSUED FOR SITE PLAN CONTROL APPLICATION AND ZONING BY-LAW AMENDMENT	CDP, DS
1	12/02/2021	SPA / ZBA SUBMISSION	CDP



Arch Corp - Orleans

1161 OLD MONTREAL RD.
ORLEANS ON, K4A 3N6

NOTES AND MISCELLANEOUS DETAILS

scale: N.T.S.
drawn by: DS
reviewed by: CDP
job number: 21-2647
plot date: January 31, 2023
drawing number:

CIV-5