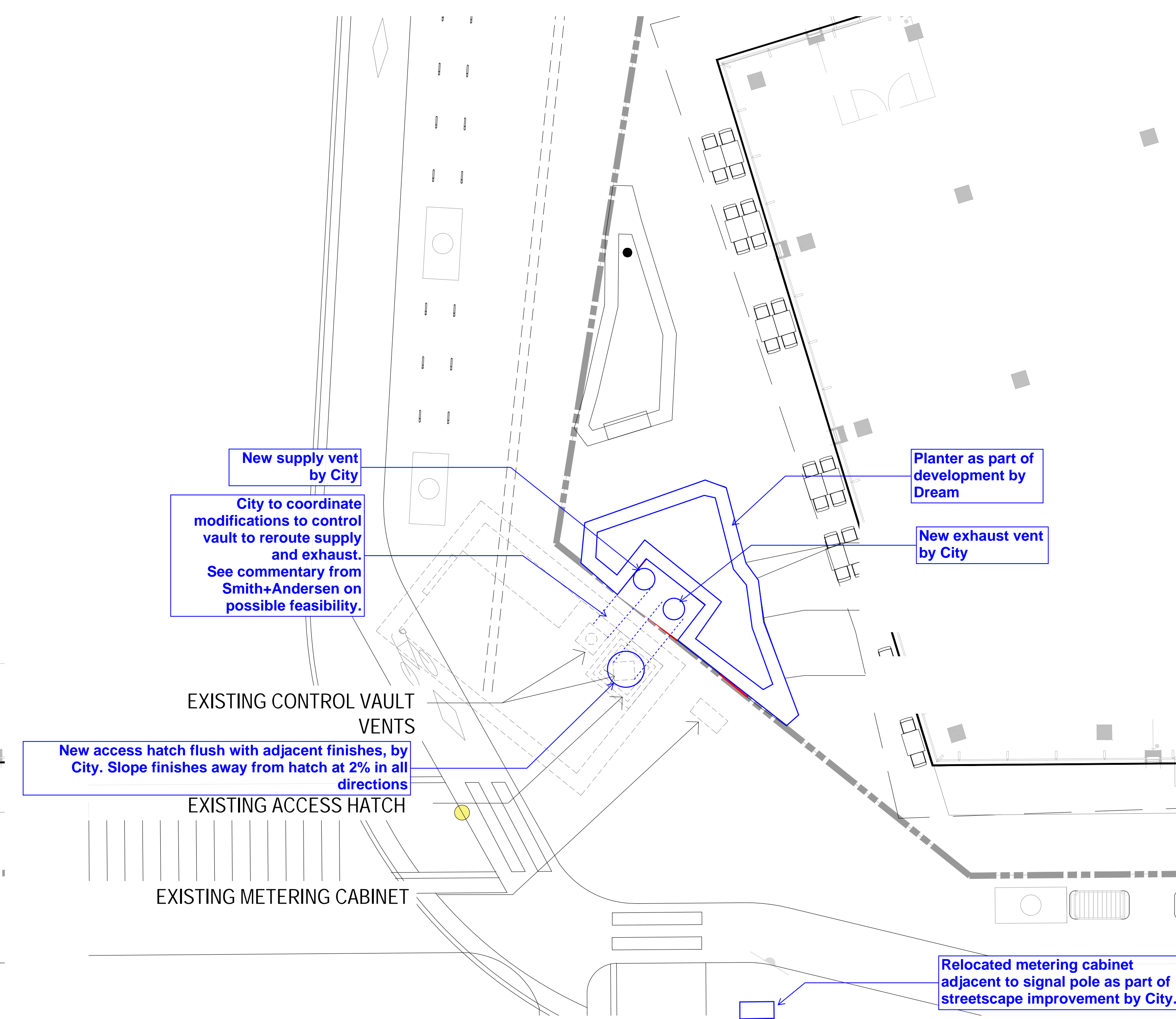
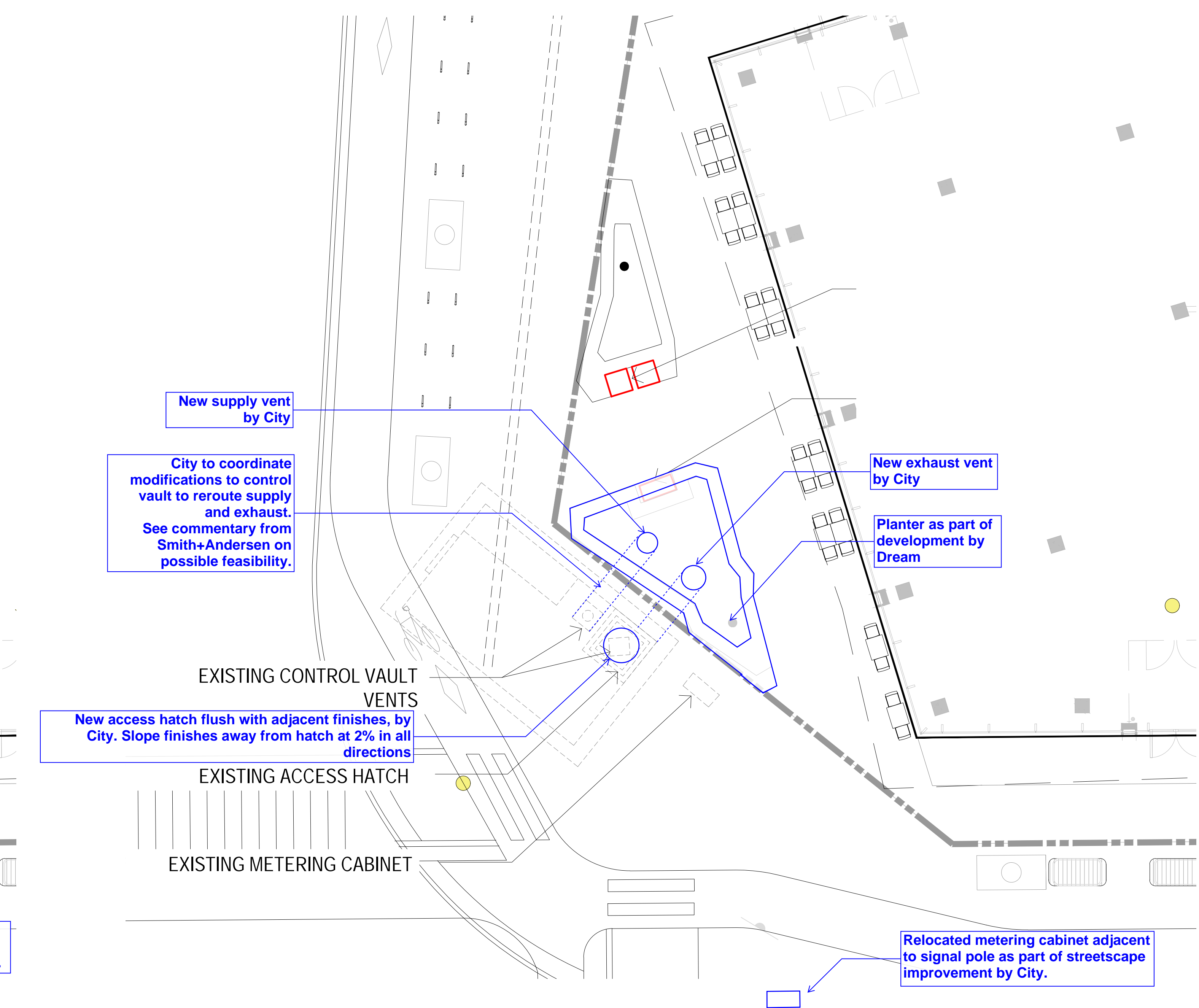


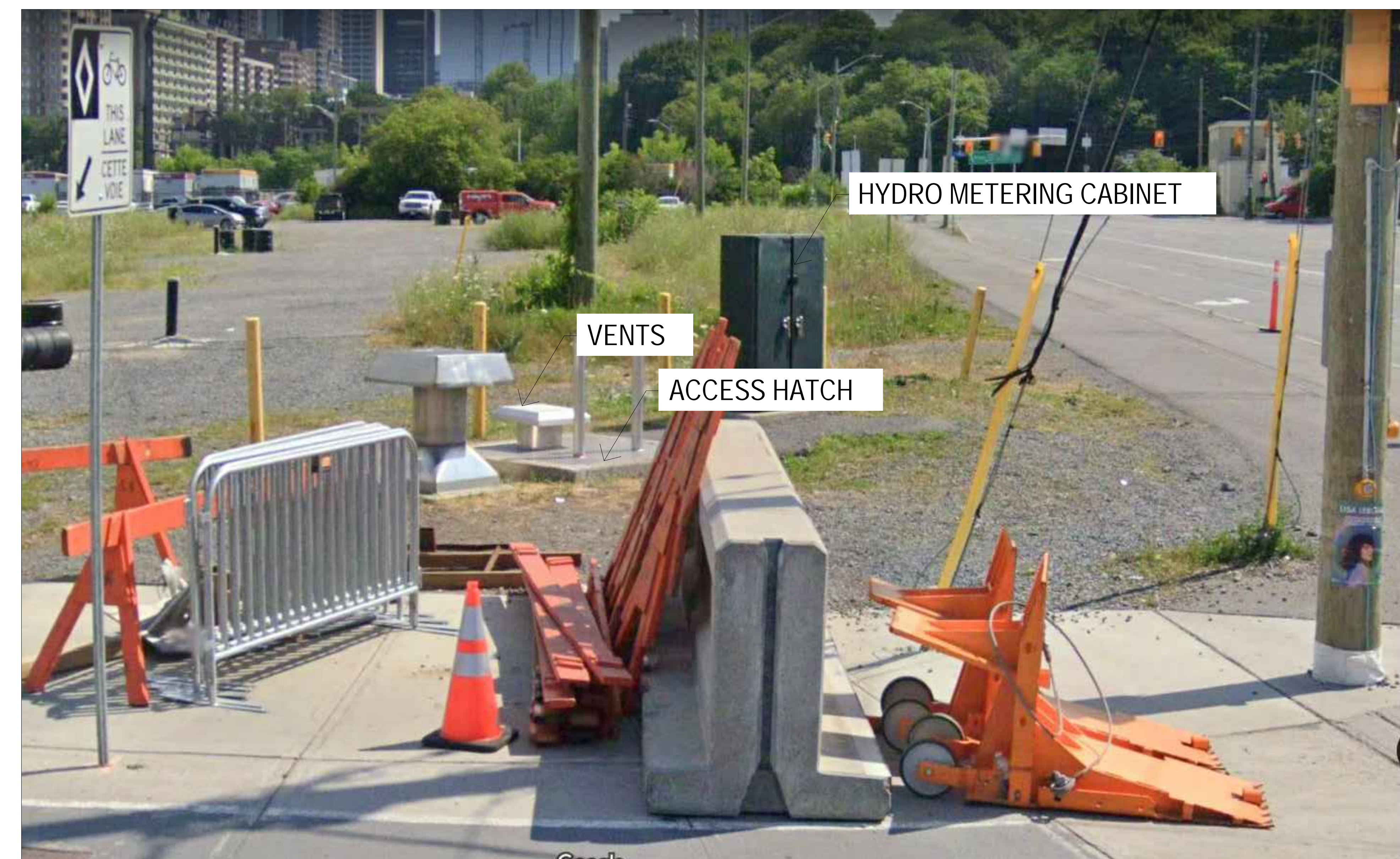
OPTION1: PLANTER TO BE PULLED OUTSIDE PL TO FRAME VENTS AND CABINET



OPTION2: VENTS AND CABINET TO BE TUCKED IN PLANTER



OPTION3: VENTS AND CABINET TO BE RELOCATED AND BLENDED INTO TWO RAISED PLANTED AREAS



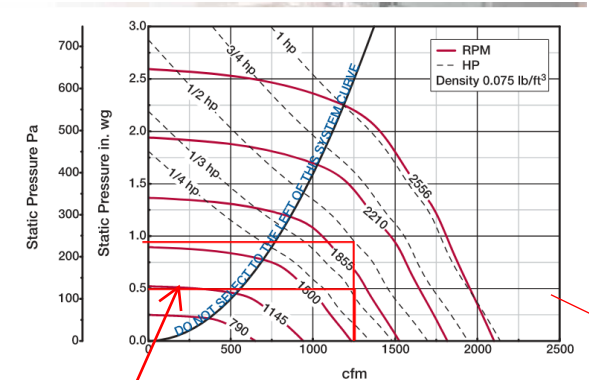
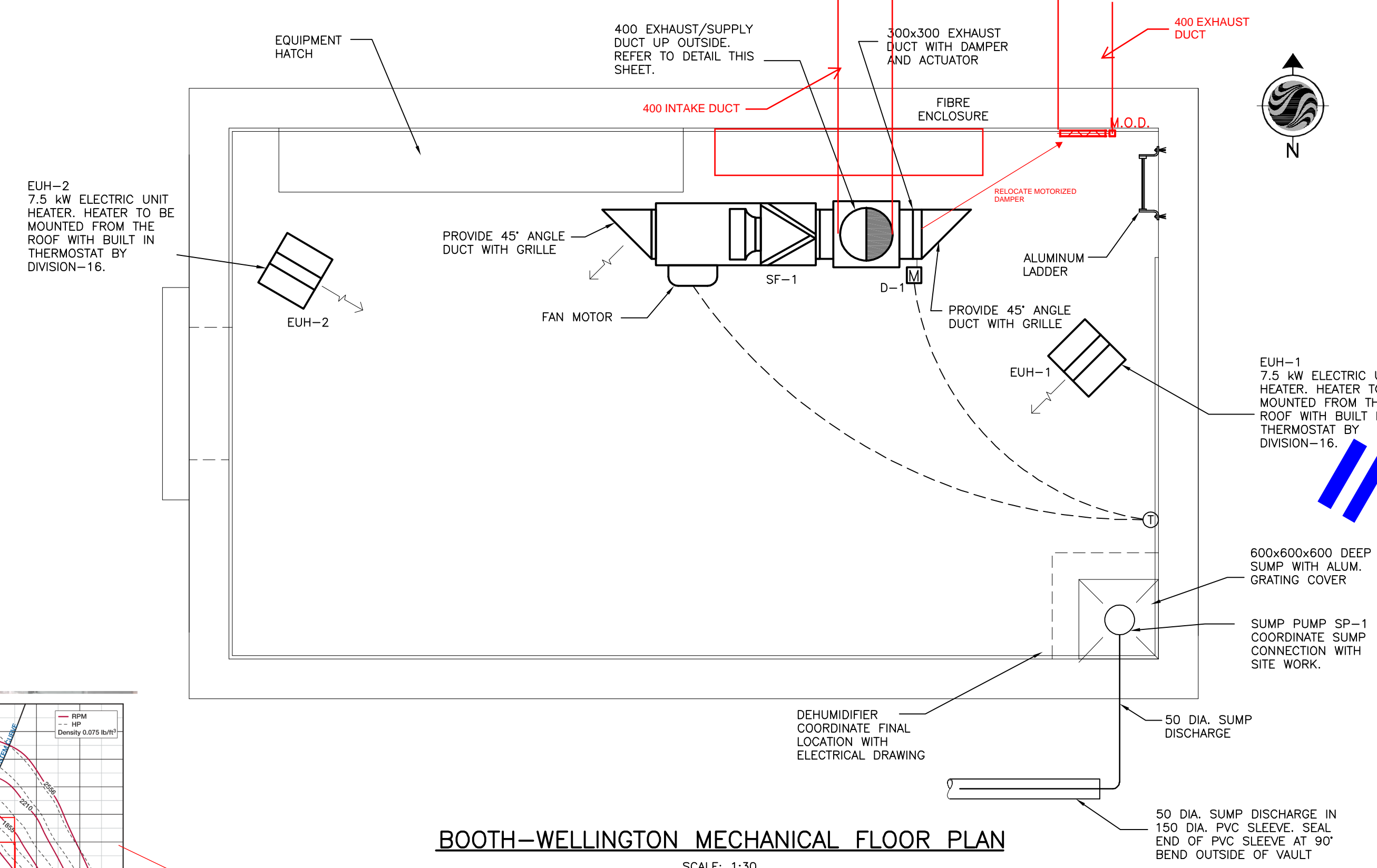
EXISTING CONDITIONS AT BOOTH ST AND ALBERT ST

**LEBRETON
LIBRARY
PARCEL
BOOTH
STREET
VAULT
2022-02-03**

E	AS BUILT	11.03.01
D	ISSUED FOR CONSTRUCTION	09.08.21
C	ISSUED FOR TENDER	09.04.09
B	ISSUED FOR 90% REVIEW	09.01.30
A	ISSUED FOR 60% REVIEW	08.11.21
No.	Revision	Date

DRAWING TITLE:
**REGULATOR CHAMBER
UPGRADES
BOOTH-WELLINGTON REGULATOR
CONTRACT No.ISB08-2017**

**BOOTH-WELLINGTON REGULATOR
CONTROL VAULT
MECHANICAL PLAN, DETAIL
& SCHEDULE**



EXHAUST FAN SCHEDULE

TAG	DESCRIPTION	LOCATION	MANUFACTURER	MODEL #	VOLUME (CFM)	S.P. ("WC)	ELECTRICAL (V/C/P)	MOTOR HP	MOTOR RPM	FLA (A)	REMARKS
SF-1	BELT DRIVE CENTRIFUGAL INLINE FAN	BOOTH-WELLINGTON VAULT	GREENHECK	BSQ-100-5	1250	0.5	115/60/1	1/2	1,429	9.5	CONTROLLED BY THERMOSTAT PROVIDED BY DIVISION-15.

EXISTING SUPPLY FAN SEEMS TO HAVE SUFFICIENT CAPACITY FOR ADDITIONAL DUCT AND FITTINGS IF THE FAN INSTALLED IS THE SAME AS THIS SCHEDULE

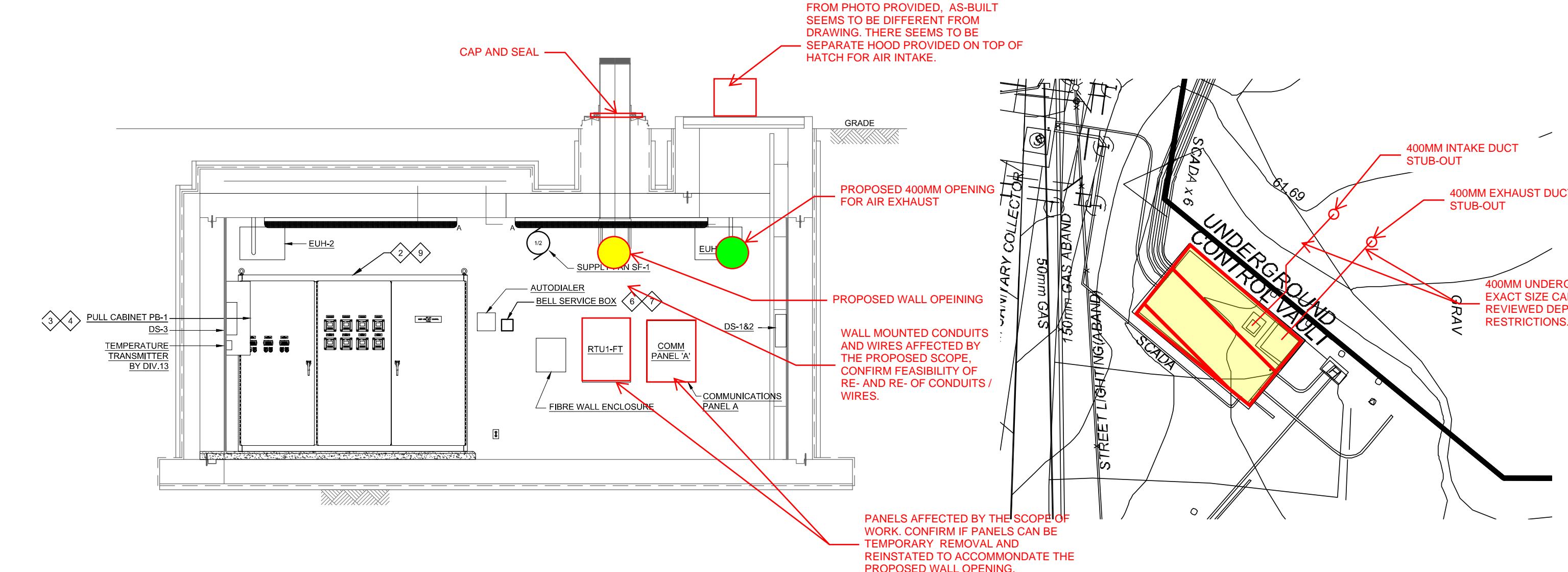
ELECTRIC UNIT HEATER

TAG	DESCRIPTION	LOCATION	MANUFACTURER	MODEL #	CAPACITY (kW)	ELECTRICAL (V/PH/Hz)	REMARKS
EUH-1	ELECTRIC UNIT HEATER	BOOTH-WELLINGTON VAULT	CALORITECH	GE-072	7.5	600/3/60	BUILT-IN THERMOSTAT
EUH-2	ELECTRIC UNIT HEATER	BOOTH-WELLINGTON VAULT	CALORITECH	GE-072	7.5	600/3/60	BUILT-IN THERMOSTAT

SUMP PUMP SCHEDULE

TAG	DESCRIPTION	LOCATION	MANUFACTURER	MODEL #	FLOWRATE (GPM)	SHUTOFF HEAD (FT.)	ELECTRICAL (V/C/P)	MOTOR HP	REMARKS
SP-1	SUMP PUMP	BOOTH-WELLINGTON VAULT	ITT FLYGT	READY 8	85	50	115/60/1	1.1	SEE NOTE 1

SUMP PUMP NOTES:
1. FURNISHED WITH CONTROL PANEL AND ALL NECESSARY ACCESSORIES. PROVIDE CHECK VALVE AT PUMP DISCHARGE. CONTROL PANEL TO HAVE UPS (1 HR. UNINTERRUPTIBLE POWER SUPPLY) BATTERY BACK-UP.



SKETCH FOR INFORMATION ONLY

