

TOPOGRAPHICAL PLAN OF SURVEY OF

PARTS OF LOTS 26 AND 27 REGISTERED PLAN 37221 CITY OF OTTAWA

Prepared by Annis, O'Sullivan, Vollebek Ltd.

Scale 1:100



Metric DISTANCES SHOWN ON THIS PLAN ARE IN METRES AND CAN BE CONVERTED TO FEET BY DIVIDING BY 0.3048

Surveyor's Certificate

I CERTIFY THAT:

- 1. This survey and plan are correct and in accordance with the Survey Act, the Surveyors Act and the Land Titles Act and the regulations made under them.
2. The survey was completed on the 28th day of November, 2019.

November 29, 2019 Date
Richard R. Gauthier Ontario Land Surveyor

Notes & Legend

- Denotes: Survey Monument Planted, Survey Monument Found, Standard Iron Bar, Iron Bar, Concrete Pin, Witness, Measured, (A00), (P1), (P2), (P3), (P4), Deciduous Tree, Fire Hydrant, Water Valve, Maintenance Hole (Storm Sewer), Maintenance Hole (Sanitary), Underground Storm Sewer, Underground Sanitary Sewer, Overhead Wires, Catch Basin, Chain Link Fence, Board Fence, Timber Retaining Wall, Concrete Sidewalk, Utility Pole, Utility Pole with Transformer, Anchor, Diameter, Location of Elevations, Top of Concrete Curb Elevation, Centreline, Property Line

ASSOCIATION OF ONTARIO LAND SURVEYORS PLAN SUBMISSION FORM 2/104/105

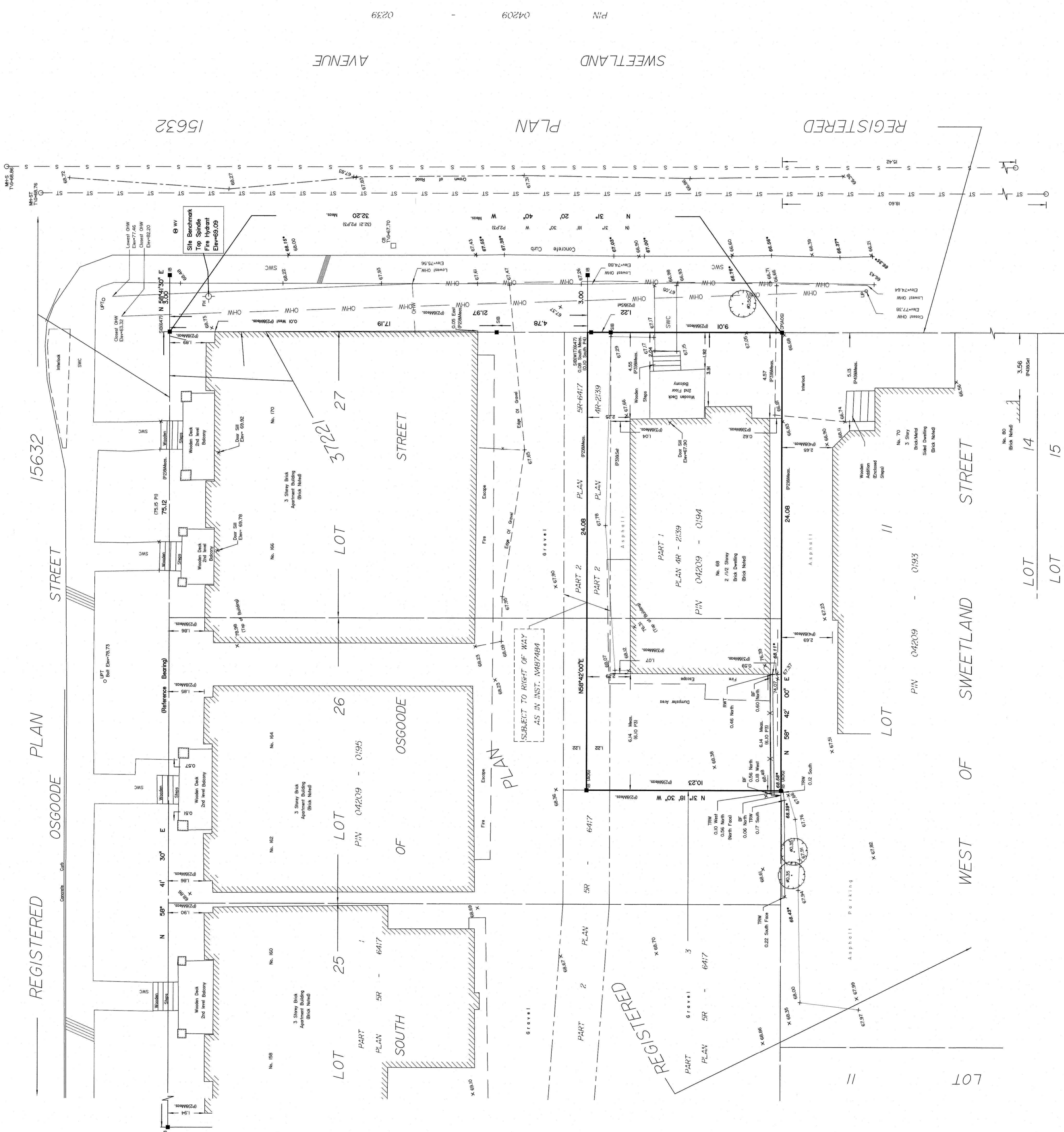


ELEVATION NOTES: 1. Elevations shown are geodetic and are referred to the CGVD28 geodetic datum. 2. It is the responsibility of the user of this information to verify that the job benchmark has not been altered or disturbed and that its relative elevation and description agrees with the information shown on this drawing.

UTILITY NOTES: 1. This drawing cannot be accepted as acknowledging all of the utilities and it will be the responsibility of the user to contact the respective utility authorities for confirmation. 2. Only visible surface utilities were located. 3. A field location of underground utility by the pertinent utility authority is mandatory before any work involving breaking ground, probing, excavating etc.

Benches are grid derived from CanMap 2016 Real Time Network GPS observations, and are referred to NAD 83 (7830' West Longitude) NAD-83 For Bearings Comparisons, a rotation of 0'02'45" Clockwise was applied for bearings on (P2).

© Annis, O'Sullivan, Vollebek Ltd. 2019. THIS PLAN IS PROTECTED BY COPYRIGHT. ANNIS, O'SULLIVAN, VOLLEBEK LTD. 14 Connaught Drive, Suite 200, Ottawa, Ontario, Canada K1R 8Y9. Phone: (613) 727-0680 / Fax: (613) 727-0799. Email: info@annisov.com



REGISTERED

PLAN

15632

STREET

15632

AVENUE

PLAN

SWEETLAND

REGISTERED

STREET

WEST OF SWEETLAND

LOT

LOT

14

15

LOT

LOT

ST

ST

ST

ST

ST

ST

ST

ST

ST

ST

ST

ST