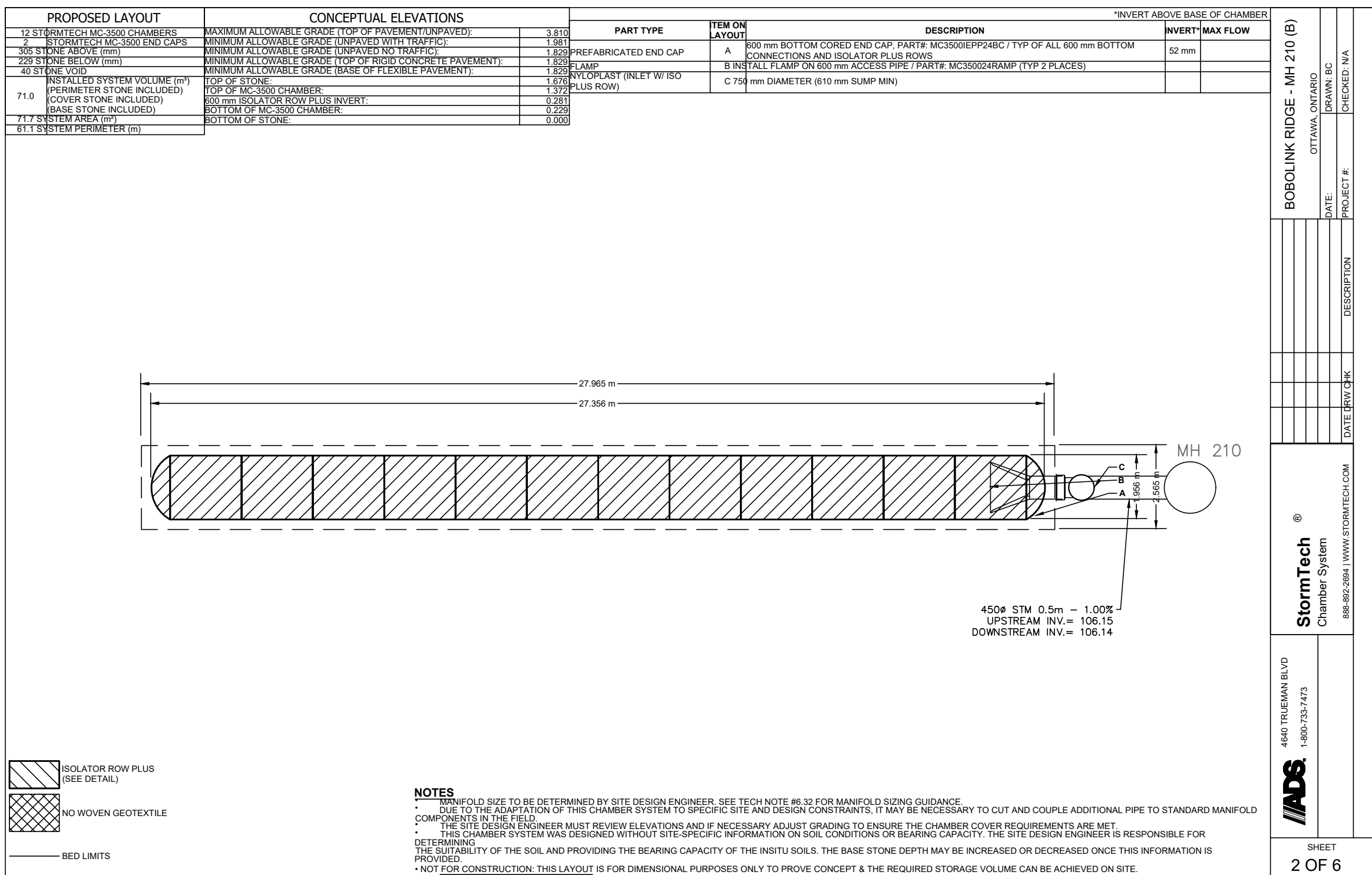
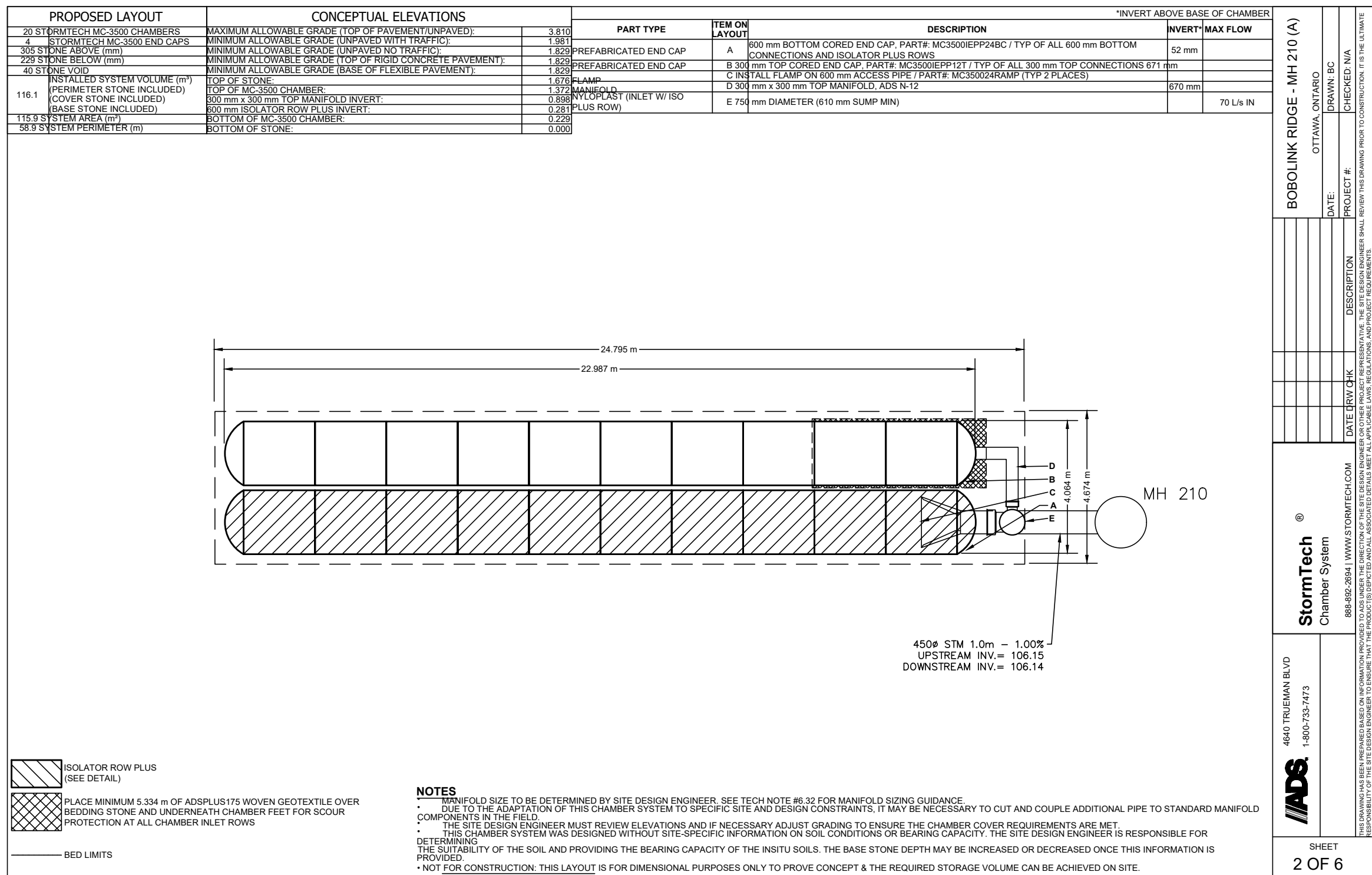
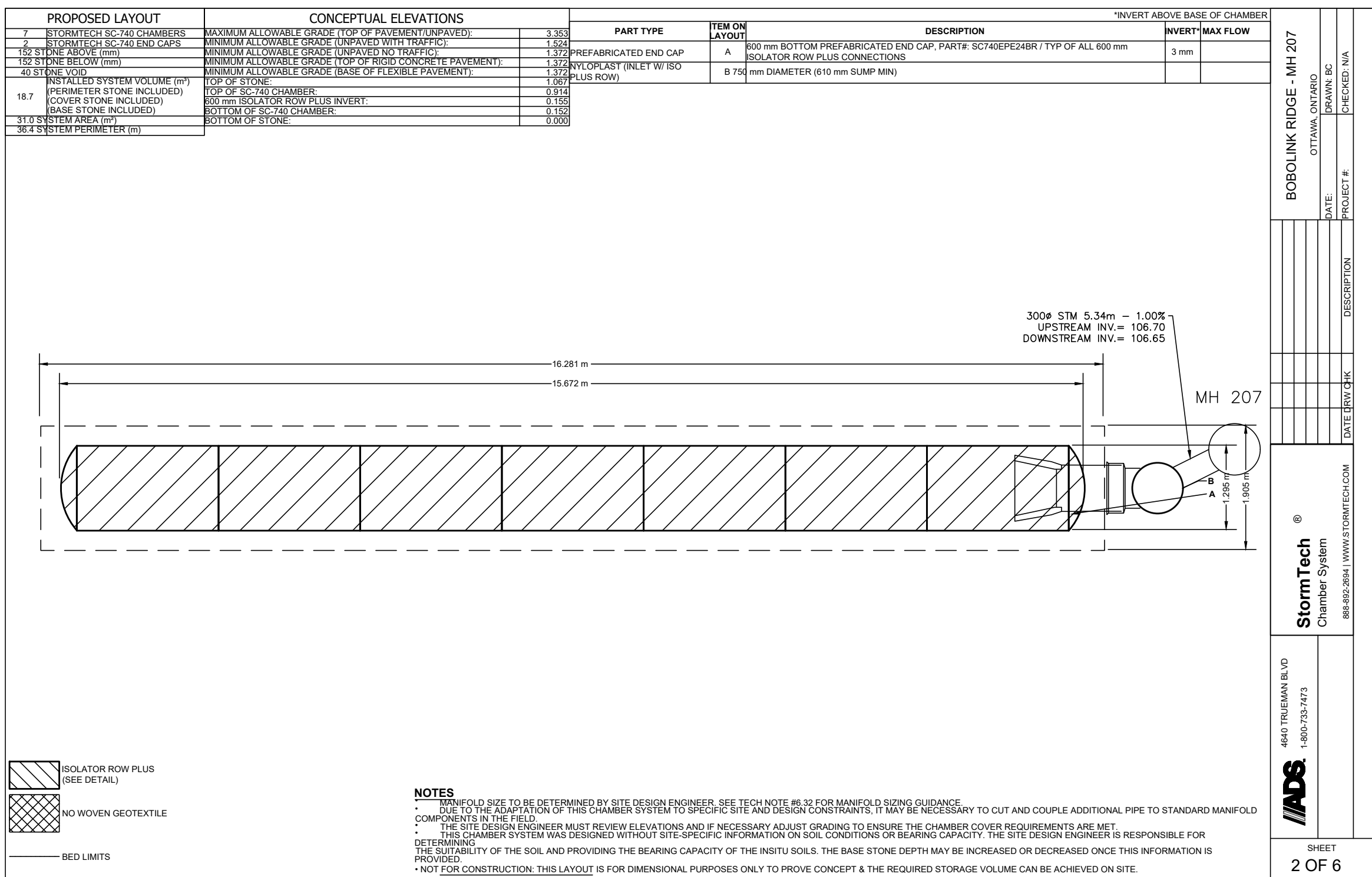
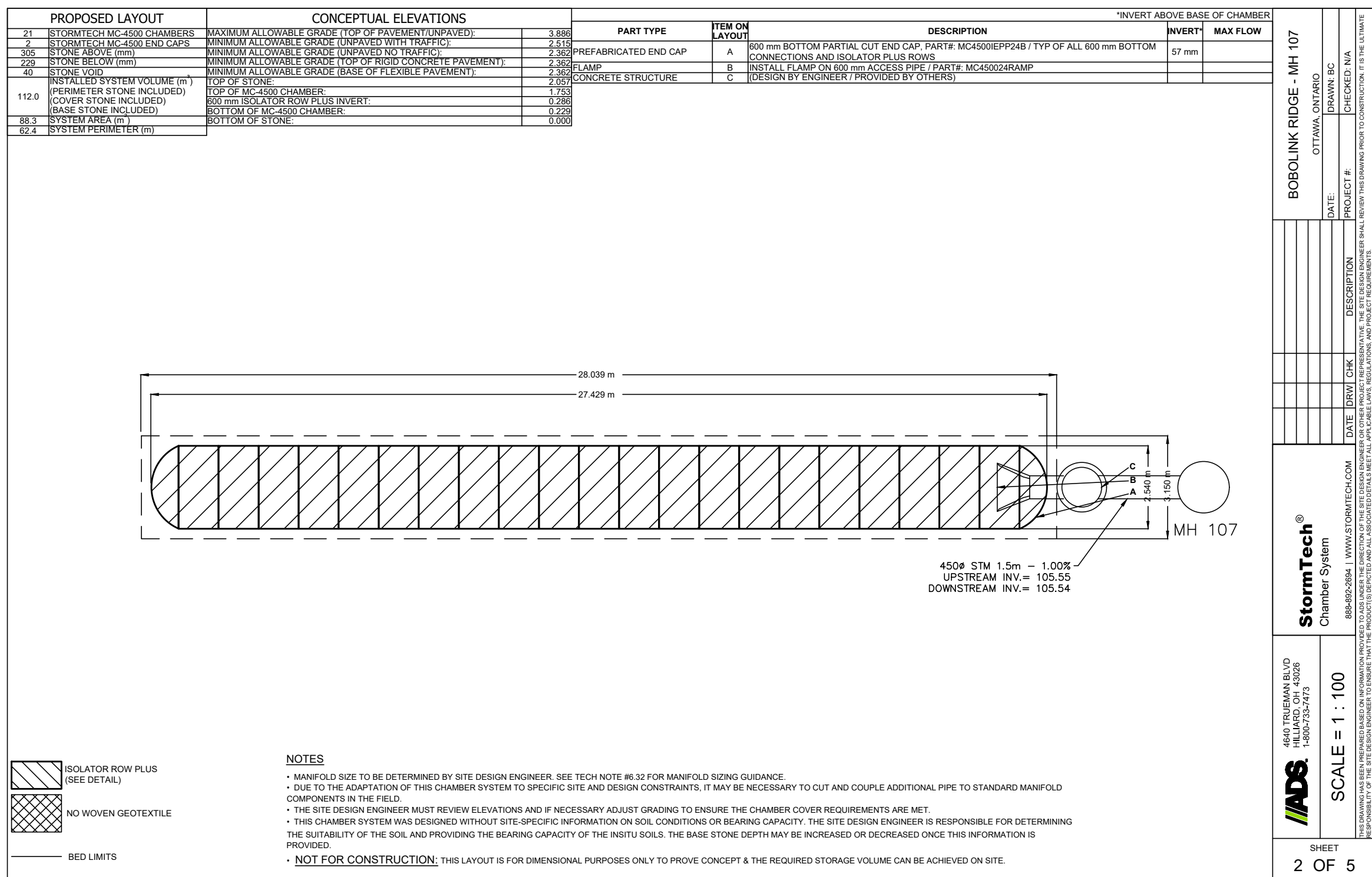


APPROVED
By Allison Hamlin at 7:53 pm, Jan 25, 2023

Allison Hamlin

ALLISON HAMLIN
MANAGER (A), DEVELOPMENT REVIEW WEST
PLANNING, REAL ESTATE & ECONOMIC DEVELOPMENT
DEPARTMENT, CITY OF OTTAWA



5	S.L.M.	22-12-19	ISSUED FOR CWN
4	S.L.M.	22-12-08	ISSUED FOR CWN
3	S.L.M.	22-09-02	3rd SUBMISSION
2	S.L.M.	22-06-10	2nd SUBMISSION
No.	BY	DATE	DESCRIPTION

TOPOGRAPHIC INFORMATION
TOPOGRAPHIC INFORMATION PROVIDED BY ANNIS, O'SULLIVAN, VOLLEBEKK LTD. PROJECT No. 22111-21 RECEIVED JUNE 24, 2021

LEGAL INFORMATION
CALCULATED M-PLAN PROVIDED BY ANNIS, O'SULLIVAN, VOLLEBEKK LTD., PROJECT No. 22111-21, DATED NOVEMBER 29, 2022.

BENCH MARK
SITE BENCHMARK #1, FIRE HYDRANT TOP OF SPINDLE
ELEVATION = 109.78m
SITE BENCHMARK #2, CP IN ASPHALT
ELEVATION = 109.09

TAMARACK HOMES

BOBOLINK RIDGE BLOCK 343

DSEL

120 Iber Road Unit 103
Stittsville, Ontario, K2S 1E9
Tel. (613) 836-0856
Fax. (613) 836-7183
www.DSEL.ca

LICENCED PROFESSIONAL ENGINEER
S. L. MERRICK
100186523
2022-12-19
PROVINCE OF ONTARIO

STORM STORAGE CHAMBER DETAILS

DRAWN BY: G.G.G. CHECKED BY: S.L.M. PROJECT No. 21-1261
DESIGNED BY: G.G.G. CHECKED BY: S.L.M.
SCALE: N.T.S. SHEET No. 4