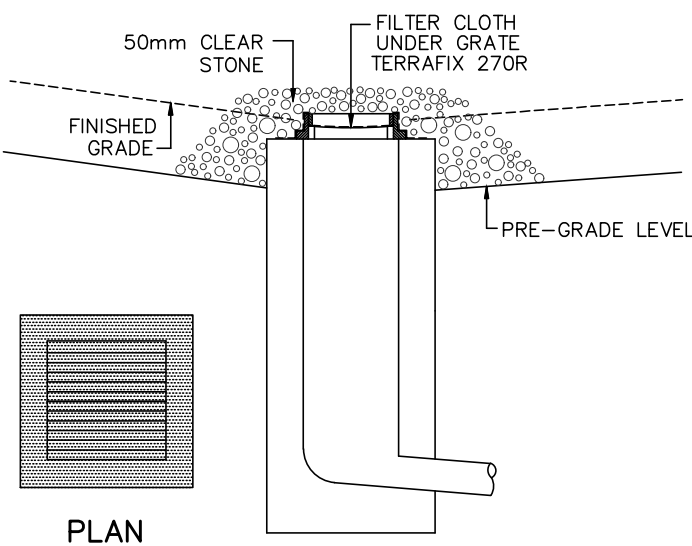


DETAIL FOR STREET CB SILT PROTECTION
SCALE: NTS



DETAIL FOR RLCB/DICB SILT PROTECTION
SCALE: NTS

FILTER CLOTH (INSERT) TO REMAIN ON OPEN SURFACE STRUCTURES SUCH AS MANHOLES AND CATCHBASINS UNTIL THESE STRUCTURES ARE COMMISSIONED AND PUT INTO USE. STREETS ARE ASPHALTED AND CURBED, AND THE SURROUNDING LANDSCAPE IS STABILIZED.

BULKHEAD BARRIERS TO BE INSTALLED OVER THE LOWER HALF OF THE OUTLETING SEWERS (WHERE REQUIRED) TO REDUCE SEDIMENT LOADINGS DURING CONSTRUCTION.

EROSION AND SEDIMENT CONTROL NOTES:

PRIOR TO TOPSOIL STRIPPING, EARTHWORKS, OR UNDERGROUND CONSTRUCTION, EROSION AND SEDIMENT CONTROLS SHALL BE IMPLEMENTED TO THE SATISFACTION OF THE AUTHORITY HAVING JURISDICTION.

SEDIMENT CONTROL FENCE SHALL BE CLEANED AND MAINTAINED IN GOOD REPAIR BY CONTRACTOR.

SEDIMENT CONTROL FENCE TO REMAIN IN PLACE UNTIL THE WORKING AREA HAS BEEN STABILIZED AND REVEGETATED.

ACCUMULATED SEDIMENT TO BE REMOVED OFF SITE PRIOR TO THE REMOVAL OF SEDIMENT CONTROL FENCE.

EROSION AND SEDIMENT CONTROL MEASURES MAY BE MODIFIED IN THE FIELD AT THE DISCRETION OF THE CITY OF OTTAWA SITE INSPECTOR OR CONSERVATION AUTHORITY PERSONNEL.

CONTRACTOR MUST USE BEST MANAGEMENT PRACTICES (BMPs) FOR EROSION AND SEDIMENT CONTROL.

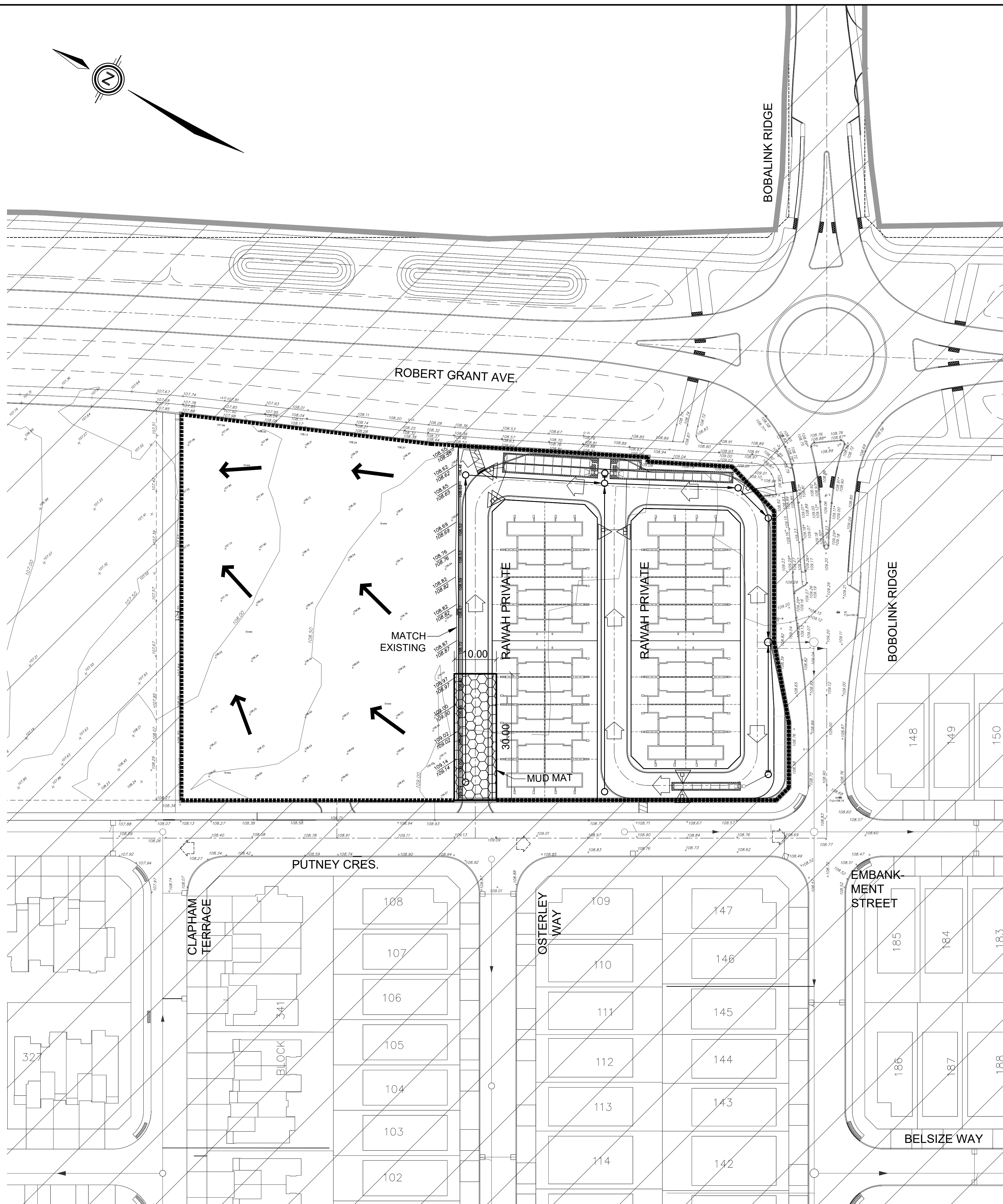
THE SILTATION CONTROL PLAN IS INTENDED TO ASSIST THE CONTRACTOR IN THE LAYOUT AND CONSTRUCTION OF THE SILTATION CONTROL FEATURES ONLY. THIS DRAWING SHALL NOT BE USED FOR CONSTRUCTION OF SITE SERVICES.

MONITORING OF SEDIMENT AND EROSION CONTROLS

MONITORING AND REPORTING TO BE COMPLETED IN ACCORDANCE WITH THE MINISTRY OF THE ENVIRONMENT AND CLIMATE CHANGE (MOEC) AND RIDEAU VALLEY CONSERVATION AUTHORITY (RVCA) APPROVALS.

MAINTENANCE PROGRAM

ALL DAMAGED EROSION MEASURES SHOULD BE REPAIRED AND/OR REPLACEMENT WITHIN 48 HOURS OF THE INSPECTION. THE ENVIRONMENTAL MONITOR IS REQUIRED TO SUBMIT UPDATES TO THE TOWN/ REGION/ CONSERVATION AUTHORITY BY EMAIL IN A TIMELY MANNER. SEDIMENT SHOULD BE REMOVED FROM THE SEDIMENT CONTROL FENCING ONCE SEDIMENT HAS ACCUMULATED TO A LEVEL OF ONE-THIRD THE HEIGHT OF FENCING OR TO A HEIGHT OF 30 cm. ANY AMOUNT OF ACCUMULATED SEDIMENT SHOULD BE REMOVED PRIOR TO THE REMOVAL OF THE CONTROL MEASURES.



LEGEND

- PROPOSED SILT FENCE
- PROPOSED SNOW FENCE
- PROPOSED ROCK FLOW CHECK DAM
- PROPOSED STRAW BALE BARRIER
- PROPOSED STRAW BALE BARRIER WITH FILTER CLOTH
- FILTER CLOTH FOR EXISTING STRUCTURE
- PROPOSED RIP RAP TREATMENT
- DITCH AND CULVERT
- MAJOR OVERLAND FLOW DIRECTION

APPROVED
By Allison Hamlin at 7:53 pm, Jan 25, 2023

Allison Hamlin

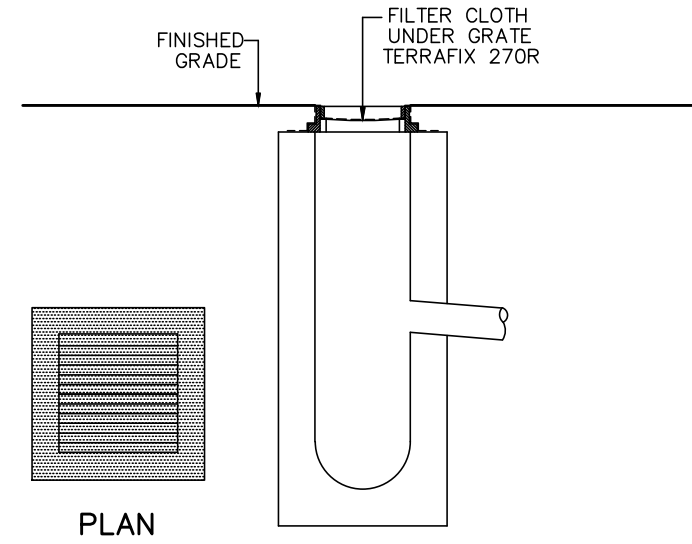
ALLISON HAMLIN
MANAGER (A), DEVELOPMENT REVIEW WEST
PLANNING, REAL ESTATE & ECONOMIC DEVELOPMENT
DEPARTMENT, CITY OF OTTAWA

5	S.L.M.	22-12-19	ISSUED FOR CWN
4	S.L.M.	22-12-08	ISSUED FOR CWN
3	S.L.M.	22-09-02	3rd SUBMISSION
2	S.L.M.	22-06-10	2nd SUBMISSION
No.	BY	DATE	DESCRIPTION
TOPOGRAPHIC INFORMATION			
TOPOGRAPHIC INFORMATION PROVIDED BY ANNIS, O'SULLIVAN, VOLLEBEKK LTD. PROJECT No. 22111-21 RECEIVED JUNE 24, 2021			
LEGAL INFORMATION			
CALCULATED M-PLAN PROVIDED BY ANNIS, O'SULLIVAN, VOLLEBEKK LTD., PROJECT No. 22111-21, DATED NOVEMBER 29, 2022.			
BENCH MARK			
SITE BENCHMARK #1, FIRE HYDRANT TOP OF SPINDLE			
ELEVATION = 109.78m			
SITE BENCHMARK #2, CP IN ASPHALT			
ELEVATION = 109.09			

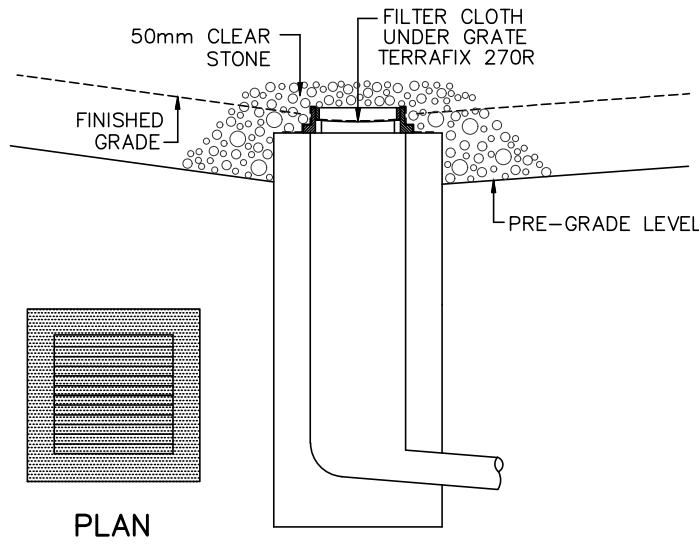
TAMARACK HOMES	BOBOLINK RIDGE BLOCK 343
DSEL 120 Iber Road Unit 103 Stittsville, Ontario, K2S 1E9 Tel. (613) 836-0856 Fax. (613) 836-7183 www.DSEL.ca	

EROSION AND SEDIMENT CONTROL PLAN INTERIM CONDITION

DRAWN BY: G.G.G.	CHECKED BY: S.L.M.	PROJECT No. 21-1261
DESIGNED BY: G.G.G.	CHECKED BY: S.L.M.	SHEET No. 17B
SCALE: 1:500		



DETAIL FOR STREET CB SILT PROTECTION
SCALE: NTS



DETAIL FOR RLCB/DICB SILT PROTECTION
SCALE: NTS

FILTER CLOTH (INSERT) TO REMAIN ON OPEN SURFACE STRUCTURES SUCH AS MANHOLES AND CATCHBASINS UNTIL THESE STRUCTURES ARE COMMISSIONED AND PUT INTO USE. STREETS ARE ASPHALTED AND CURBED, AND THE SURROUNDING LANDSCAPE IS STABILIZED.

BULKHEAD BARRIERS TO BE INSTALLED OVER THE LOWER HALF OF THE OUTLETTING SEWERS (WHERE REQUIRED) TO REDUCE SEDIMENT LOADINGS DURING CONSTRUCTION.

EROSION AND SEDIMENT CONTROL NOTES:

PRIOR TO TOPSOIL STRIPPING, EARTHWORKS, OR UNDERGROUND CONSTRUCTION, EROSION AND SEDIMENT CONTROLS SHALL BE IMPLEMENTED TO THE SATISFACTION OF THE AUTHORITY HAVING JURISDICTION.

SEDIMENT CONTROL FENCE SHALL BE CLEANED AND MAINTAINED IN GOOD REPAIR BY CONTRACTOR.

SEDIMENT CONTROL FENCE TO REMAIN IN PLACE UNTIL THE WORKING AREA HAS BEEN STABILIZED AND REVEGETATED.

ACCUMULATED SEDIMENT TO BE REMOVED OFF SITE PRIOR TO THE REMOVAL OF SEDIMENT CONTROL FENCE.

EROSION AND SEDIMENT CONTROL MEASURES MAY BE MODIFIED IN THE FIELD AT THE DISCRETION OF THE CITY OF OTTAWA SITE INSPECTOR OR CONSERVATION AUTHORITY PERSONNEL.

CONTRACTOR MUST USE BEST MANAGEMENT PRACTICES (BMPs) FOR EROSION AND SEDIMENT CONTROL.

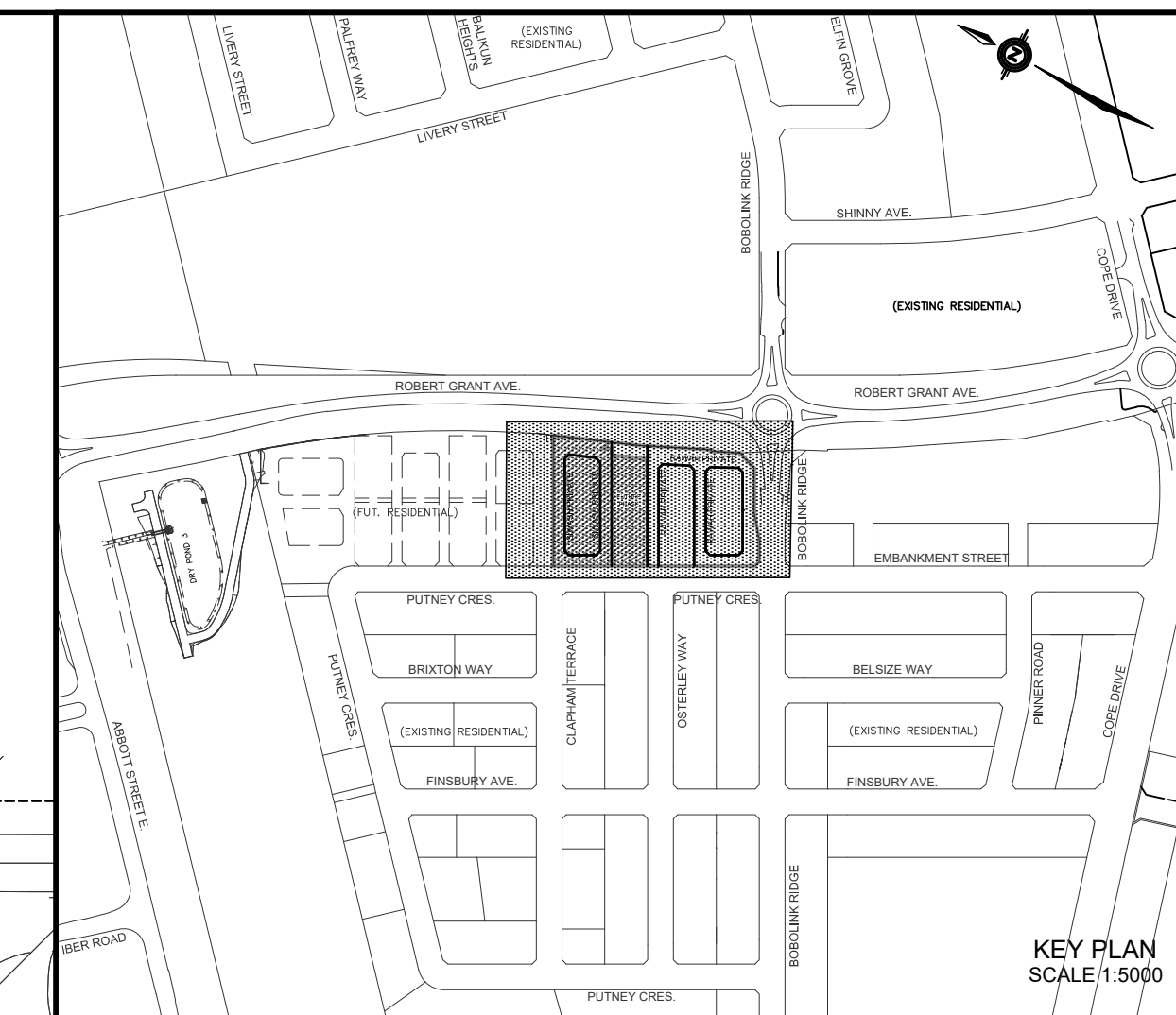
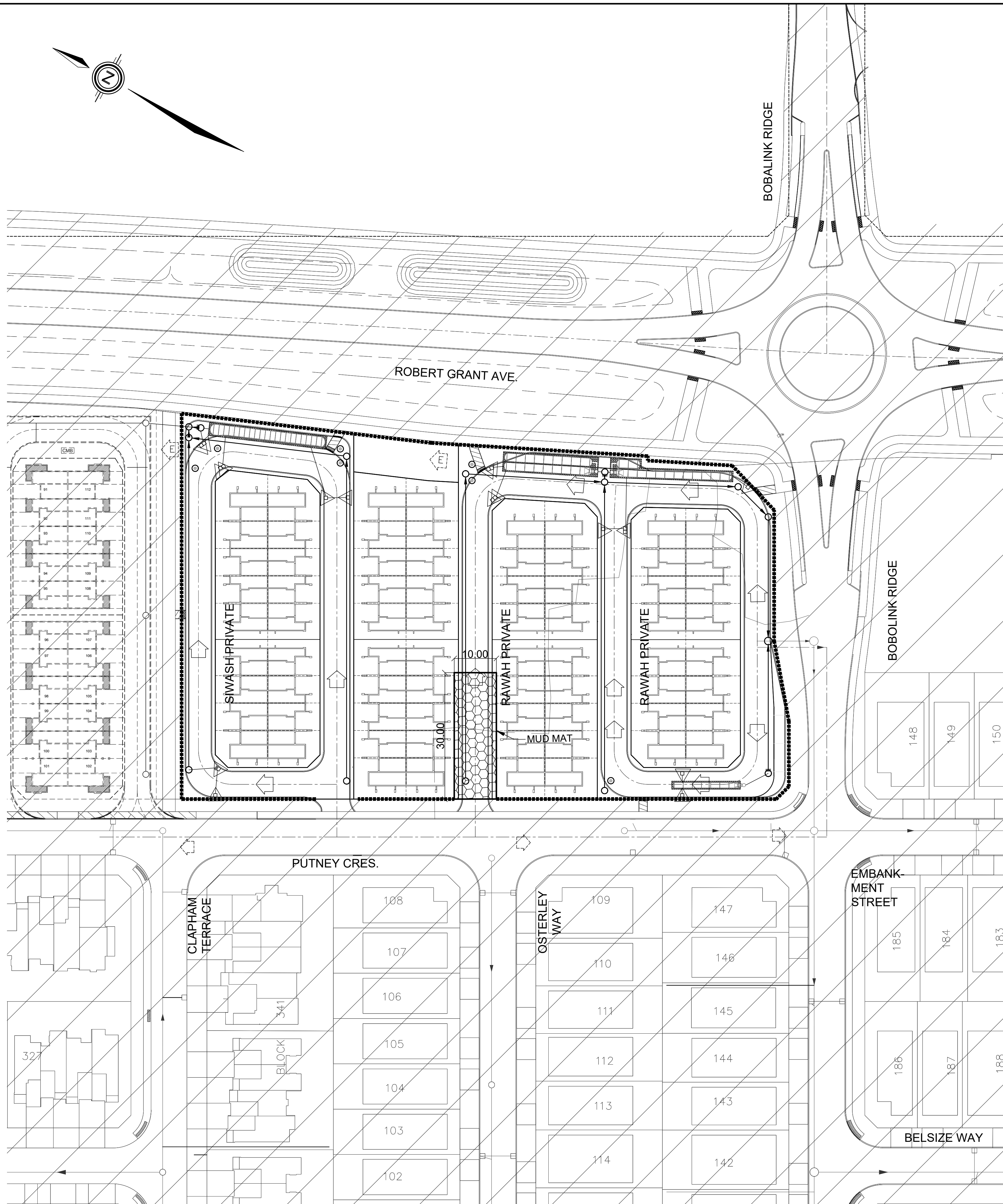
THE SILTATION CONTROL PLAN IS INTENDED TO ASSIST THE CONTRACTOR IN THE LAYOUT AND CONSTRUCTION OF THE SILTATION CONTROL FEATURES ONLY. THIS DRAWING SHALL NOT BE USED FOR CONSTRUCTION OF SITE SERVICES.

MONITORING OF SEDIMENT AND EROSION CONTROLS

MONITORING AND REPORTING TO BE COMPLETED IN ACCORDANCE WITH THE MINISTRY OF THE ENVIRONMENT AND CLIMATE CHANGE (MOEC) AND RIDEAU VALLEY CONSERVATION AUTHORITY (RVCA) APPROVALS.

MAINTENANCE PROGRAM

ALL DAMAGED EROSION MEASURES SHOULD BE REPAIRED AND/OR REPLACEMENT WITHIN 48 HOURS OF THE INSPECTION. THE ENVIRONMENTAL MONITOR IS REQUIRED TO SUBMIT UPDATES TO THE TOWN/REGION/CONSERVATION AUTHORITY BY EMAIL IN A TIMELY MANNER. SEDIMENT SHOULD BE REMOVED FROM THE SEDIMENT CONTROL FENCING ONCE SEDIMENT HAS ACCUMULATED TO A LEVEL OF ONE-THIRD THE HEIGHT OF FENCING OR TO A HEIGHT OF 30 cm. ANY AMOUNT OF ACCUMULATED SEDIMENT SHOULD BE REMOVED PRIOR TO THE REMOVAL OF THE CONTROL MEASURES.



LEGEND	
PROPOSED SILT FENCE	-----
PROPOSED SNOW FENCE	-----
PROPOSED ROCK FLOW CHECK DAM	-----
PROPOSED STRAW BALE BARRIER	-----
PROPOSED STRAW BALE BARRIER WITH FILTER CLOTH	-----
FILTER CLOTH FOR EXISTING STRUCTURE	-----
PROPOSED RIP RAP TREATMENT	-----
DITCH AND CULVERT	-----
MAJOR OVERLAND FLOW DIRECTION	-----

APPROVED
By Allison Hamlin at 7:53 pm, Jan 25, 2023

Allison Hamlin
ALLISON HAMLIN
MANAGER (A), DEVELOPMENT REVIEW WEST
PLANNING, REAL ESTATE & ECONOMIC DEVELOPMENT
DEPARTMENT, CITY OF OTTAWA

5	S.L.M.	22-12-19	ISSUED FOR CWN
4	S.L.M.	22-12-08	ISSUED FOR CWN
3	S.L.M.	22-09-02	3rd SUBMISSION
2	S.L.M.	22-06-10	2nd SUBMISSION
No.	BY	DATE	DESCRIPTION
TOPOGRAPHIC INFORMATION TOPOGRAPHIC INFORMATION PROVIDED BY ANNIS, O'SULLIVAN, VOLLEBEKK LTD. PROJECT No. 22111-21 RECEIVED JUNE 24, 2021			
LEGAL INFORMATION CALCULATED M-PLAN PROVIDED BY ANNIS, O'SULLIVAN, VOLLEBEKK LTD., PROJECT No. 22111-21, DATED NOVEMBER 29, 2022.			
BENCH MARK SITE BENCHMARK #1, FIRE HYDRANT TOP OF SPINDLE ELEVATION = 109.78m SITE BENCHMARK #2, CP IN ASPHALT ELEVATION = 109.09			
TAMARACK HOMES		BOBOLINK RIDGE BLOCK 343	
DSEL 120 Iber Road Unit 103 Stittsville, Ontario, K2S 1E9 Tel. (613) 836-0856 Fax. (613) 836-7183 www.DSEL.ca			
EROSION AND SEDIMENT CONTROL PLAN STAGE 2			
DRAWN BY: G.G.G.		CHECKED BY: S.L.M.	
DESIGNED BY: G.G.G.		CHECKED BY: S.L.M.	
SCALE: 1:500		PROJECT No. 21-1261	
		SHEET No. 18	