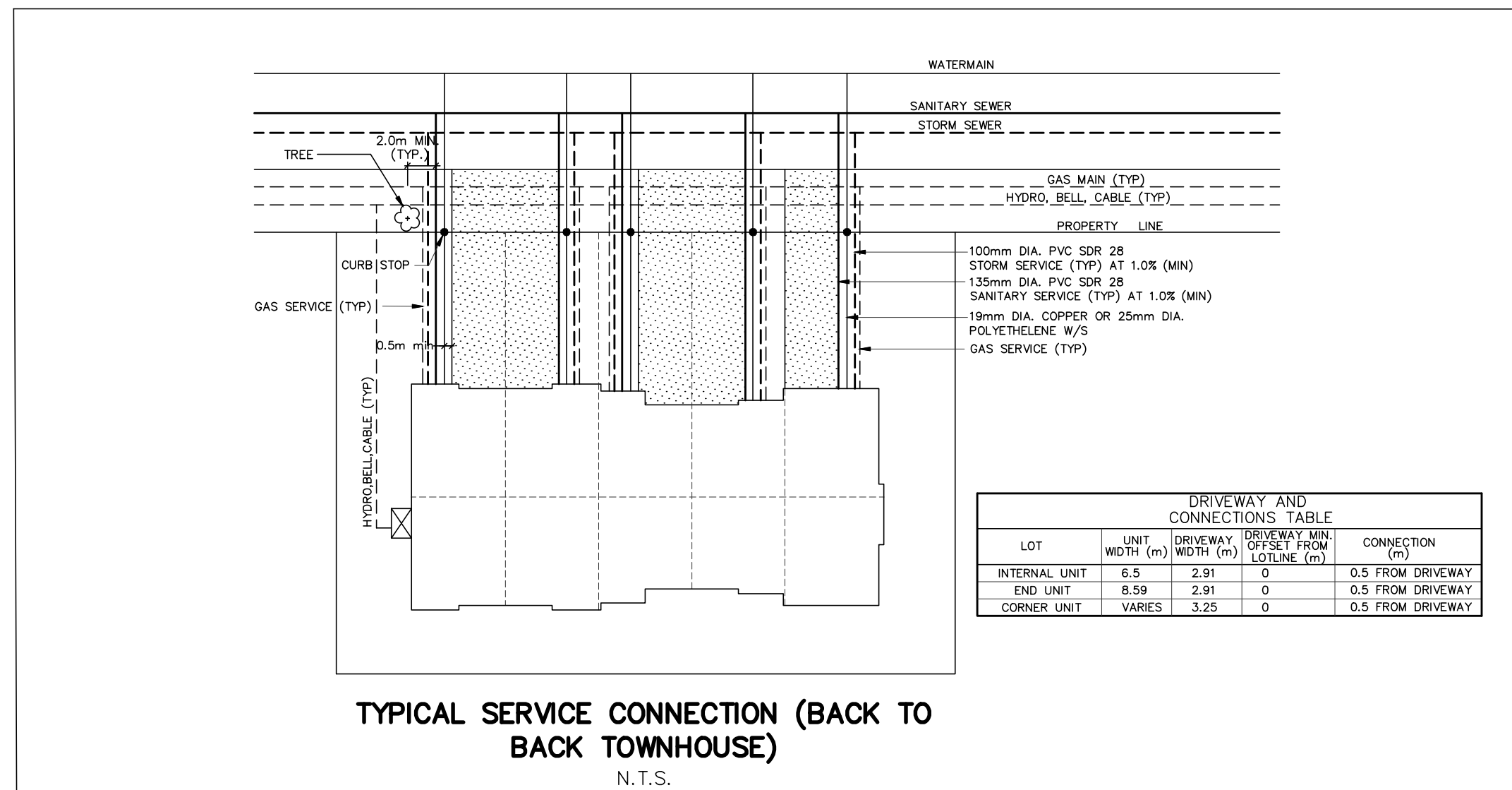
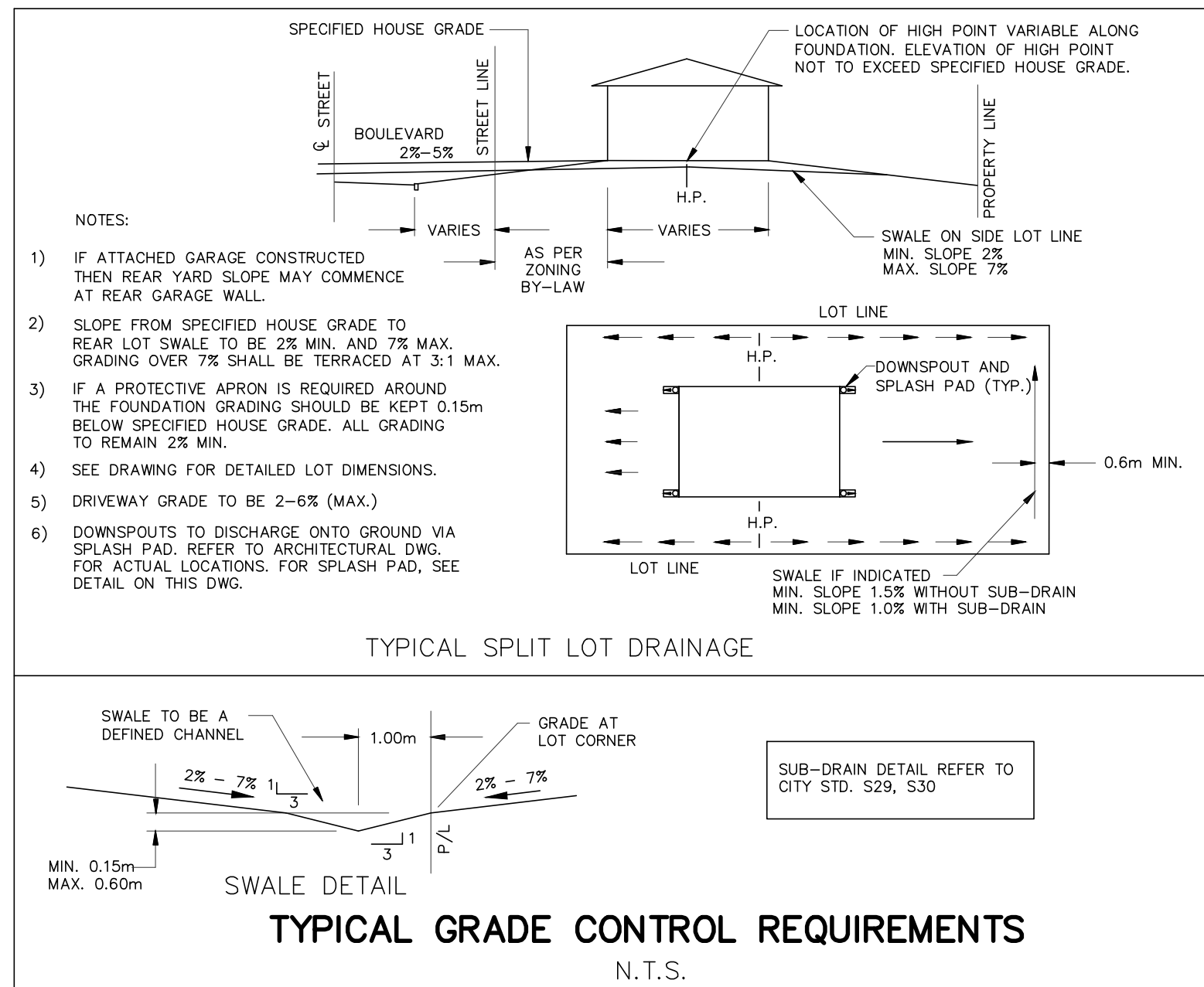
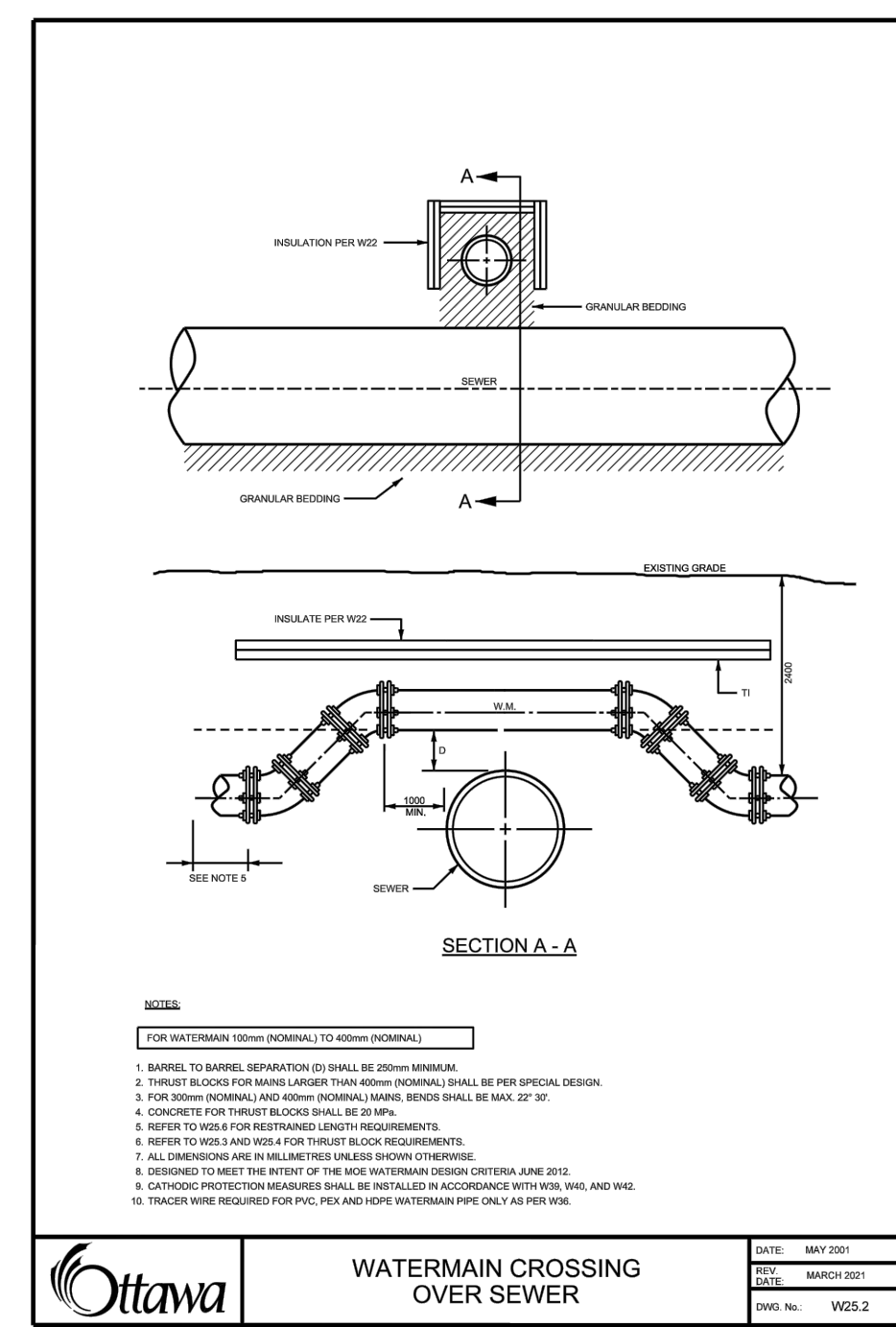
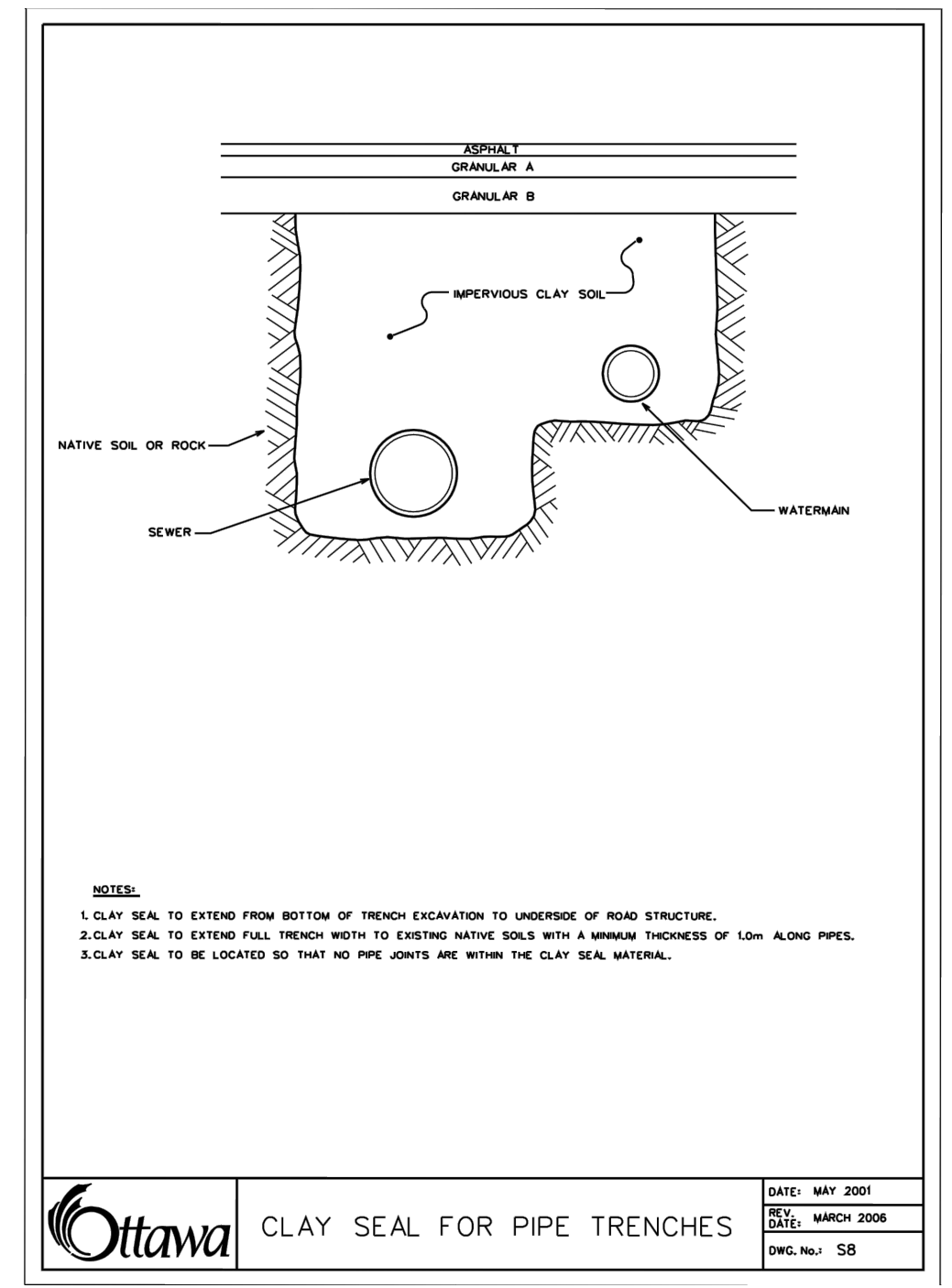
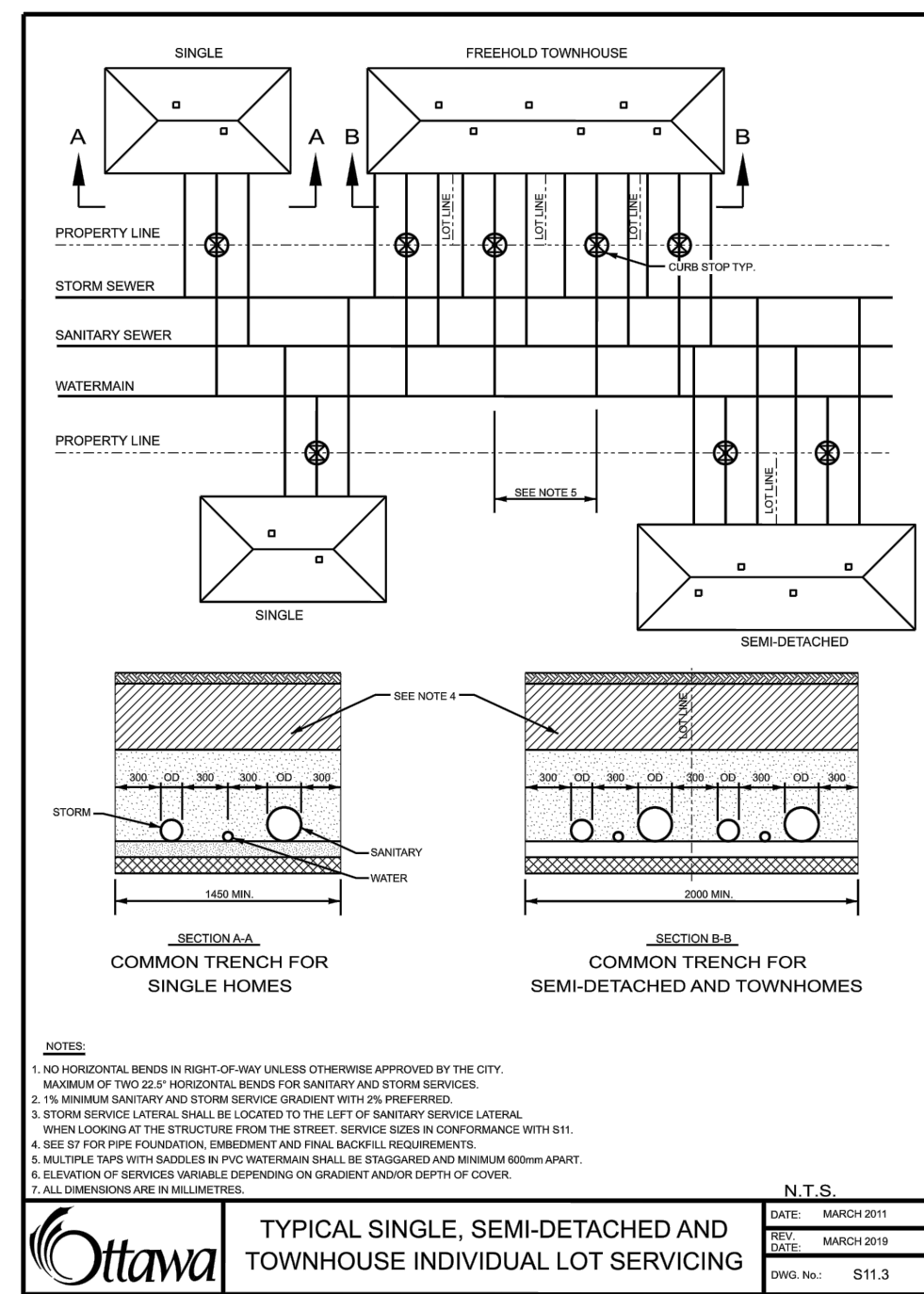


CURB TYPE AND PAVEMENT DESIGN TABLE		
STREET NAME	CURB TYPE / CURB STANDARD	PAVEMENT DESIGN
SIWASH PRIVATE EAST SIDE (STA. 0+015.540 TO STA. 0+078.320) (STA. 0+128.680 TO STA. 0+184.520) SIWASH PRIVATE (WEST SIDE) (STA. 0+022.380 TO STA. 0+078.320) RAWAH PRIVATE (EAST SIDE) (STA. 0+015.480 TO STA. 0+071.670) (STA. 0+251.500 TO STA. 0+300.850) RAWAH PRIVATE (WEST SIDE) (STA. 0+015.480 TO STA. 0+078.220) (STA. 0+155.440 TO STA. 0+204.780) (STA. 0+246.230 TO STA. 0+300.850)	CONCRETE MOUNTABLE CURB SC1.3	40mm SUPERPAVE 12.5 ASPHALT CONCRETE 50mm SUPERPAVE 19.0 ASPHALT CONCRETE 150mm OPSS GRANULAR A CRUSHED STONE 400mm OPSS GRANULAR B TYPE II
SIWASH PRIVATE RAWAH PRIVATE	CONCRETE BARRIER CURB SC1.1	

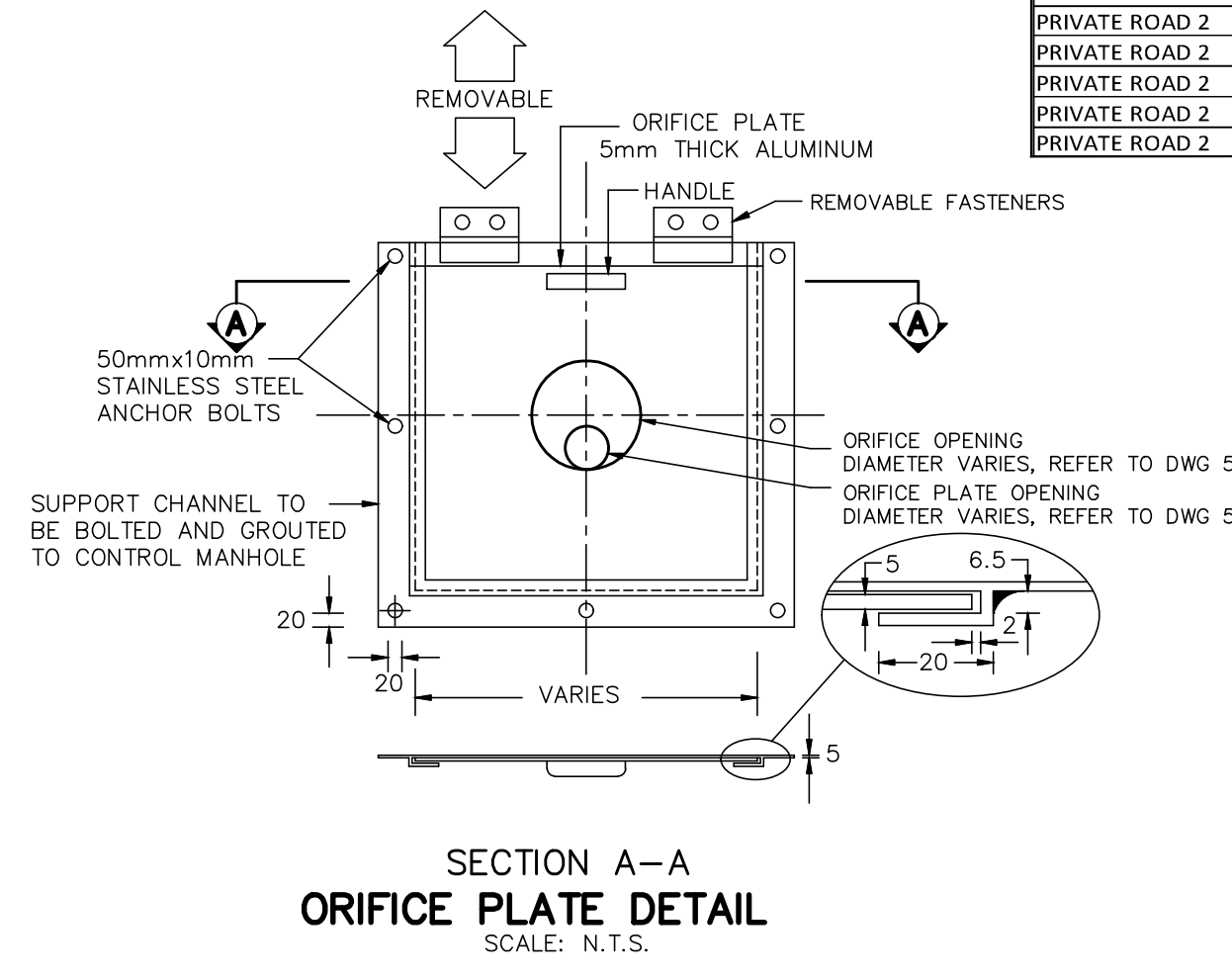
NOTE RE: PAVEMENT DESIGN
FOR PAVEMENT STRUCTURAL DESIGN,
REFER TO GEOTECHNICAL REPORT
No. P65858-1 DATED JULY 5, 2021,
PREPARED BY PATERSON GROUP
INC.



APPROVED
By Allison Hamlin at 7:53 pm, Jan 25, 2023



Allison Hamlin
ALLISON HAMLIN
MANAGER (A), DEVELOPMENT REVIEW WEST
PLANNING, REAL ESTATE & ECONOMIC DEVELOPMENT
DEPARTMENT, CITY OF OTTAWA



STREET NAME	CATCHBASIN ID	OUTLET PIPE			TOP OF GRATE	GRATING COVER	INVERT		
		DIA. (mm)	TYPE	LENGTH (m)			INV. DEPTH (m)	INLET	OUTLET
PRIVATE ROAD 1	DCB 1	300	PVC	2.50	1.38	107.99	S19 PERFORATED	-	106.61
PRIVATE ROAD 1	DCB 2	375	PVC	6.50	1.38	108.01	S19 PERFORATED	-	106.63
PRIVATE ROAD 1	CB 3	200	PVC	4.50	1.38	108.23	S19 PERFORATED	-	106.85
PRIVATE ROAD 1	CB 4	200	PVC	12.50	1.48	108.23	S19 PERFORATED	106.81	106.75
PRIVATE ROAD 1	CB 13	200	PVC	5.50	1.38	108.49	S19 PERFORATED	-	107.11
PRIVATE ROAD 2	DCB 5	375	PVC	6.50	1.38	108.29	S19 PERFORATED	-	106.91
PRIVATE ROAD 2	DCB 6	300	PVC	2.50	1.38	108.29	S19 PERFORATED	-	106.91
PRIVATE ROAD 2	CB 9	200	PVC	4.00	1.38	108.78	S19 PERFORATED	-	107.40
PRIVATE ROAD 2	CB 10	200	PVC	1.50	1.38	108.65	S19 PERFORATED	-	107.27
PRIVATE ROAD 2	CB 11	200	PVC	1.00	1.38	108.65	S19 PERFORATED	-	107.27
PRIVATE ROAD 2	CB 12	200	PVC	6.50	1.38	108.47	S19 PERFORATED	107.04	106.98
PRIVATE ROAD 2	DCB 7	300	PVC	12.00	1.48	108.47	S19 PERFORATED	107.05	106.99
PRIVATE ROAD 2	CB 8	200	PVC	4.00	1.38	108.47	S19 PERFORATED	-	107.09

No.	BY	DATE	DESCRIPTION
5	S.L.M.	22-12-19	ISSUED FOR CWN
4	S.L.M.	22-12-08	ISSUED FOR CWN
3	S.L.M.	22-09-02	3rd SUBMISSION
2	S.L.M.	22-06-10	2nd SUBMISSION

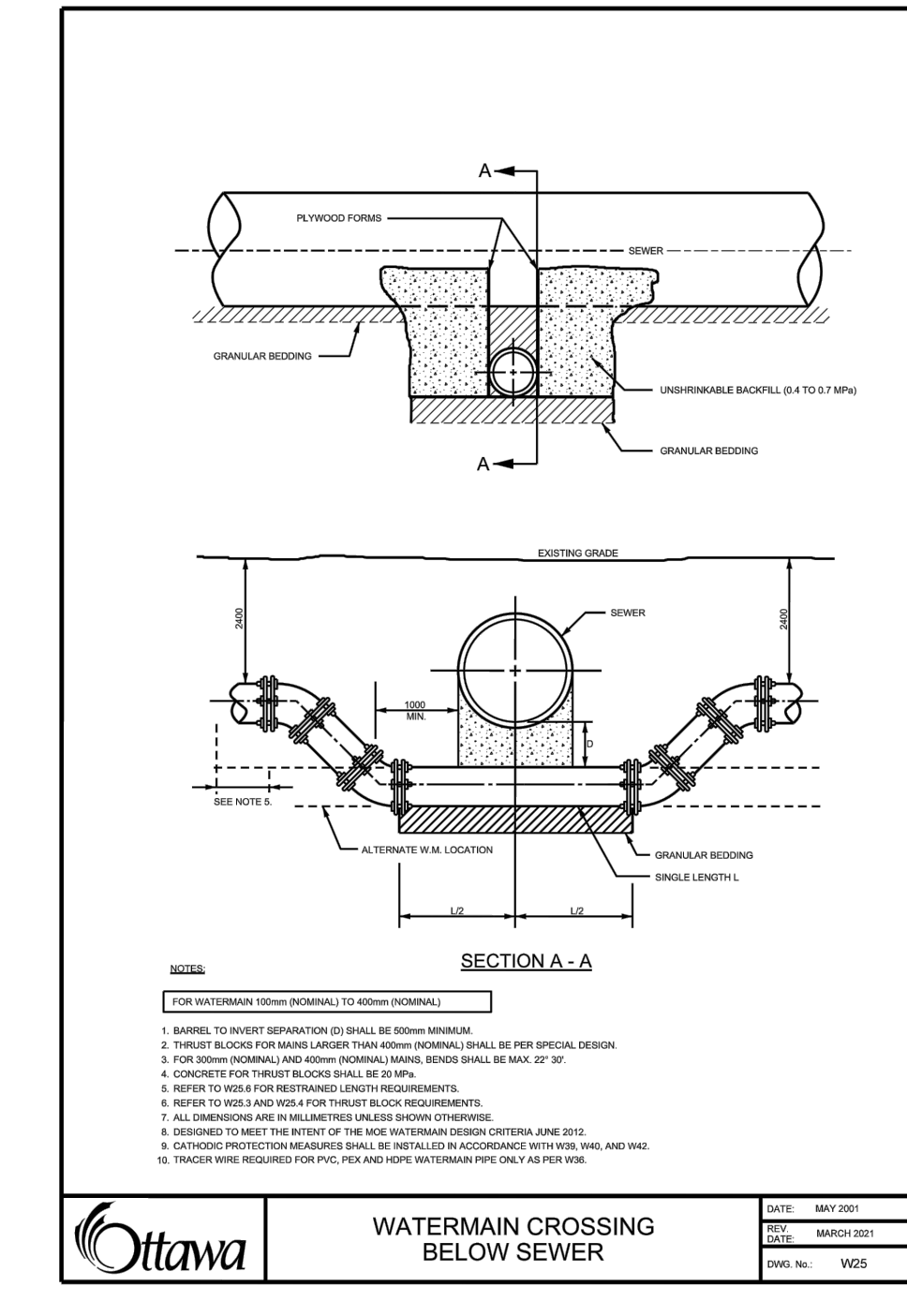
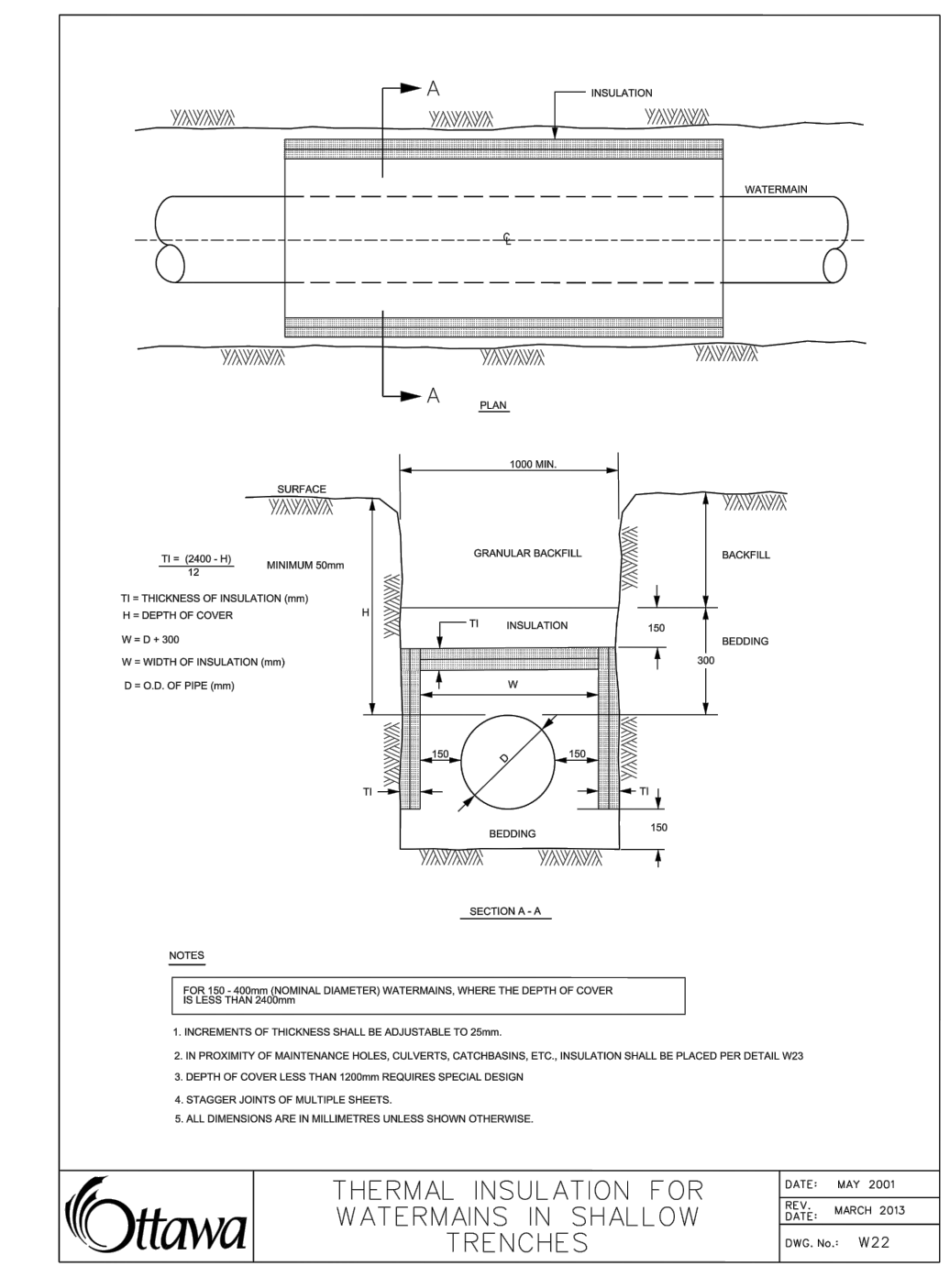
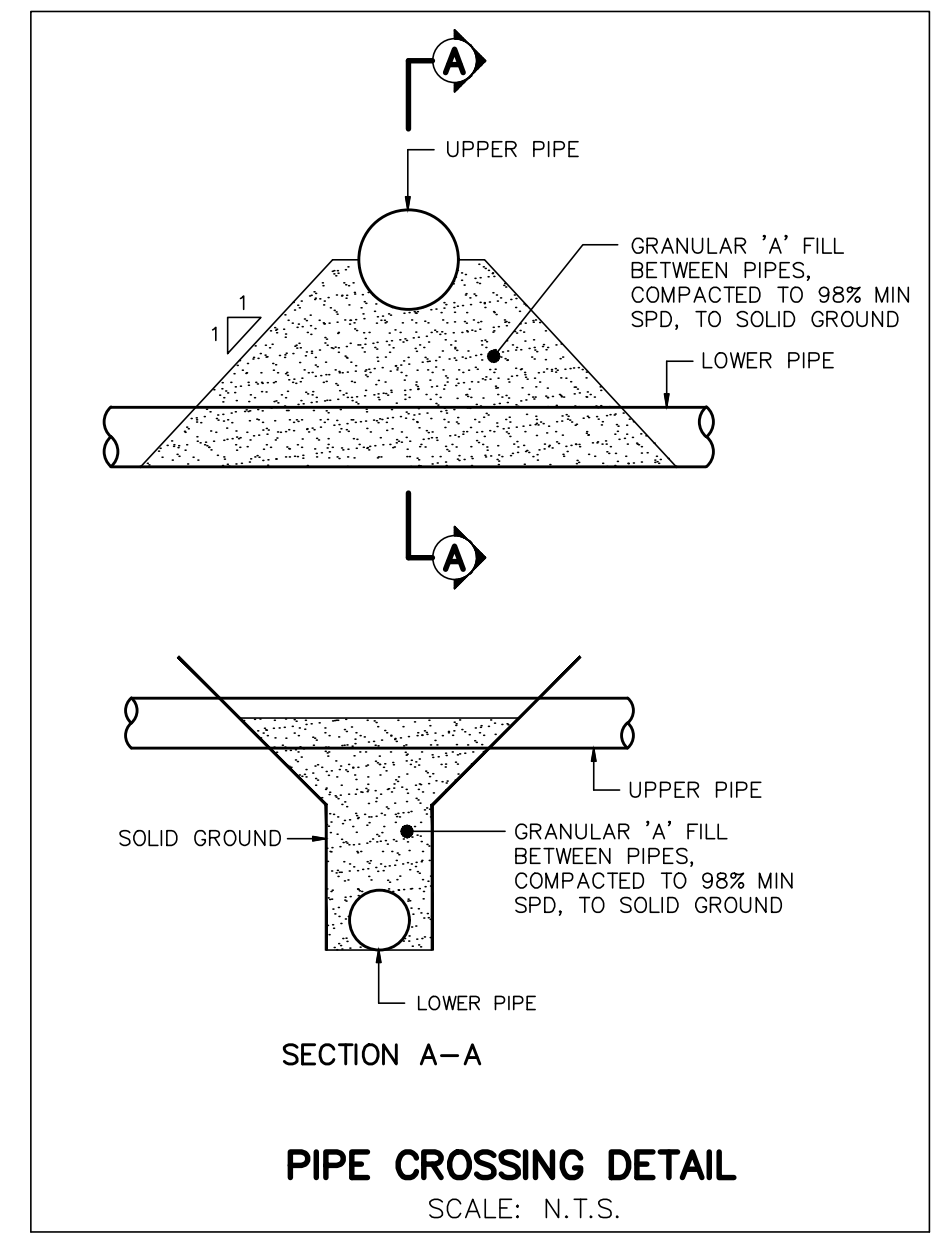
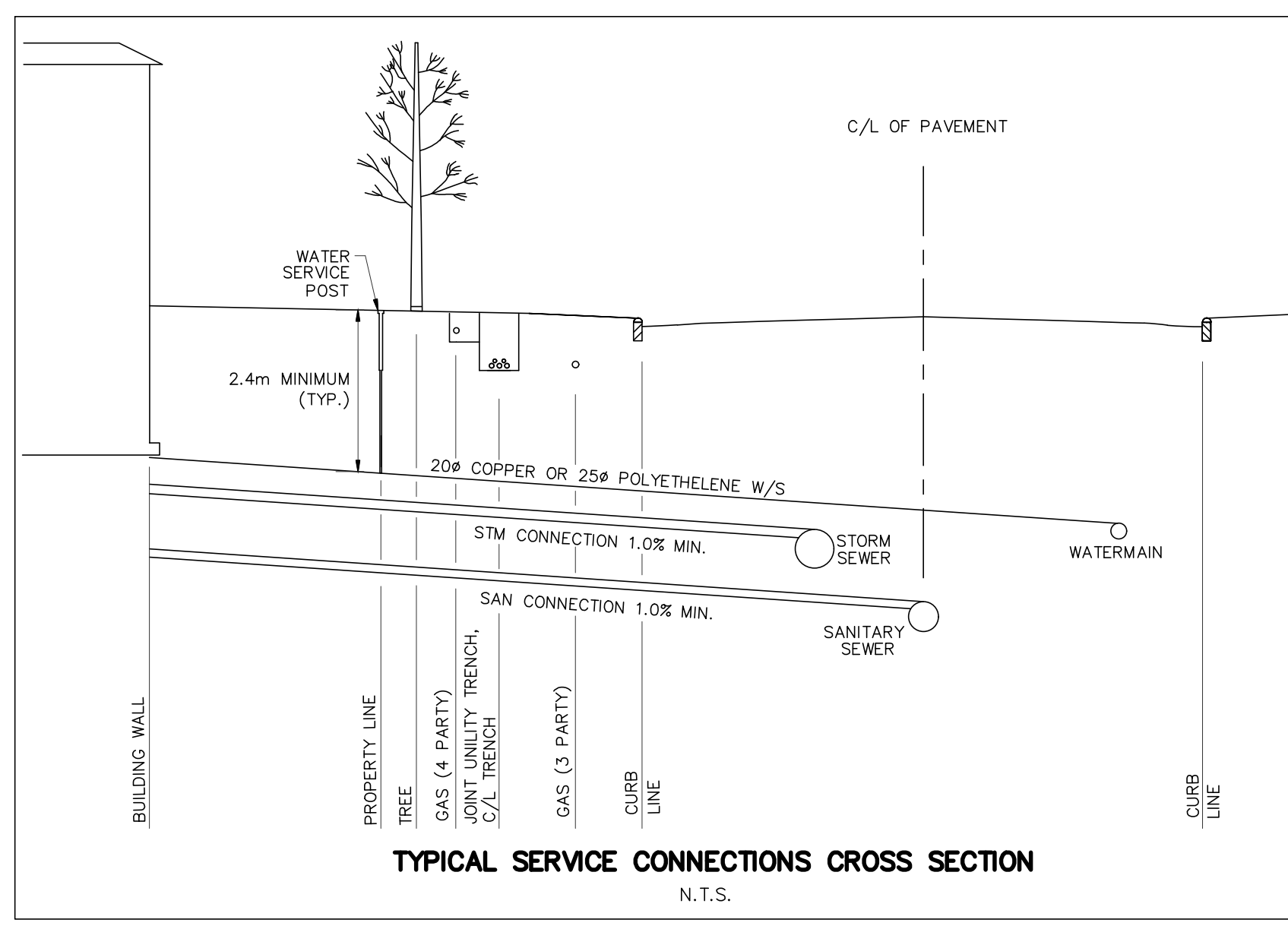
TOPOGRAPHIC INFORMATION
TOPOGRAPHIC INFORMATION PROVIDED BY ANNIS, O'SULLIVAN, VOLLEBEKK LTD. PROJECT No. 22111-21 RECEIVED JUNE 24, 2021
LEGAL INFORMATION
CALCULATED M-PLAN PROVIDED BY ANNIS, O'SULLIVAN, VOLLEBEKK LTD., PROJECT No. 22111-21, DATED NOVEMBER 29, 2022.
BENCH MARK
SITE BENCHMARK #1, FIRE HYDRANT TOP OF SPINDLE
ELEVATION = 109.78m
SITE BENCHMARK #2, CP IN ASPHALT
ELEVATION = 109.09

TAMARACK HOMES BOBOLINK RIDGE BLOCK 343

120 Iber Road Unit 103
Slittsville, Ontario, K2S 1E9
Tel. (613) 836-0856
Fax. (613) 836-7183
www.DSEL.ca

DETAILS AND TABLE

DRAWN BY: G.G.G.	CHECKED BY: S.L.M.	PROJECT No. 21-1261
DESIGNED BY: G.G.G.	CHECKED BY: S.L.M.	SHEET No. 3
SCALE: N.T.S.		



CITY PLAN No. 18642
CITY FILE No. D07-12-21-0230