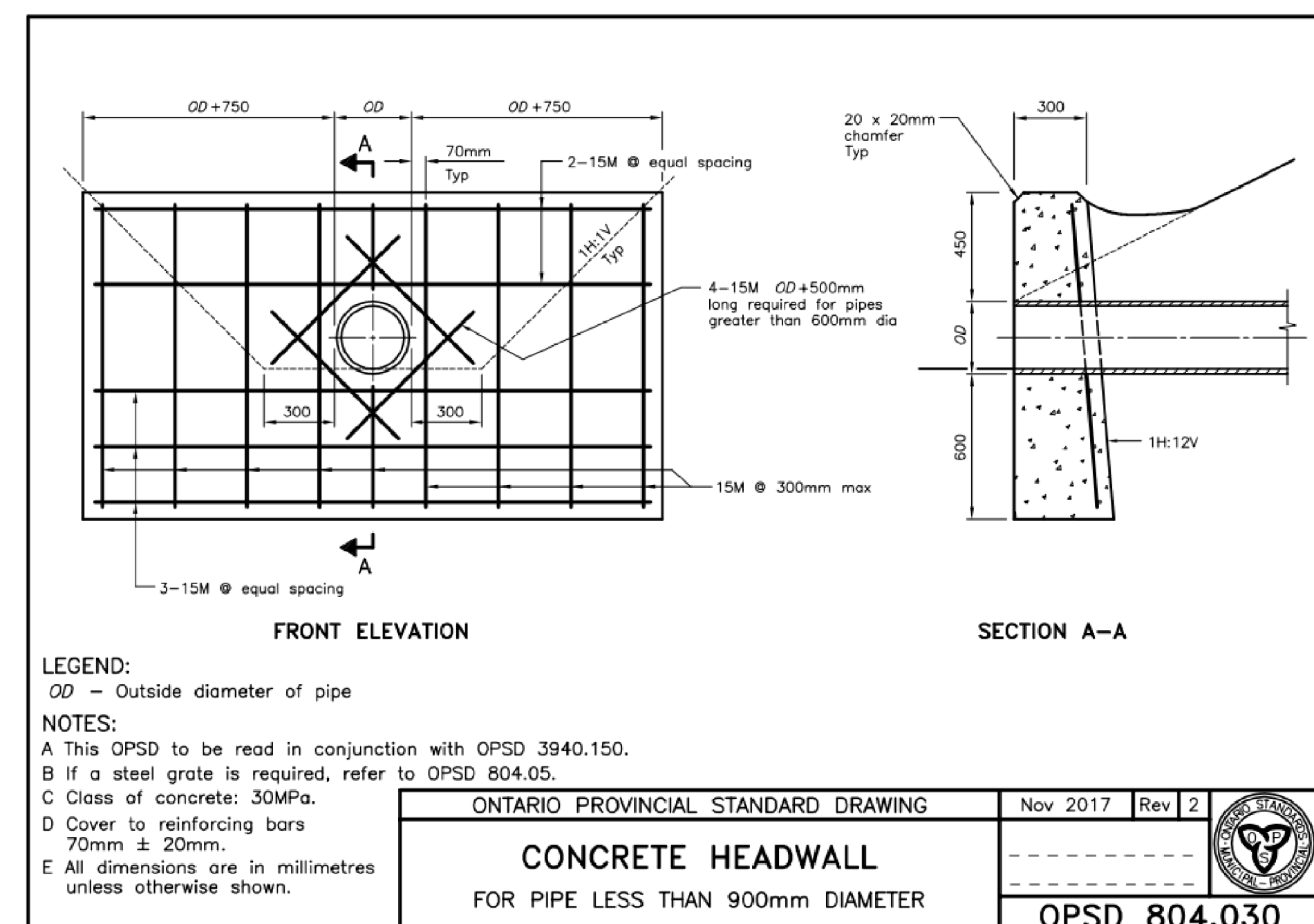
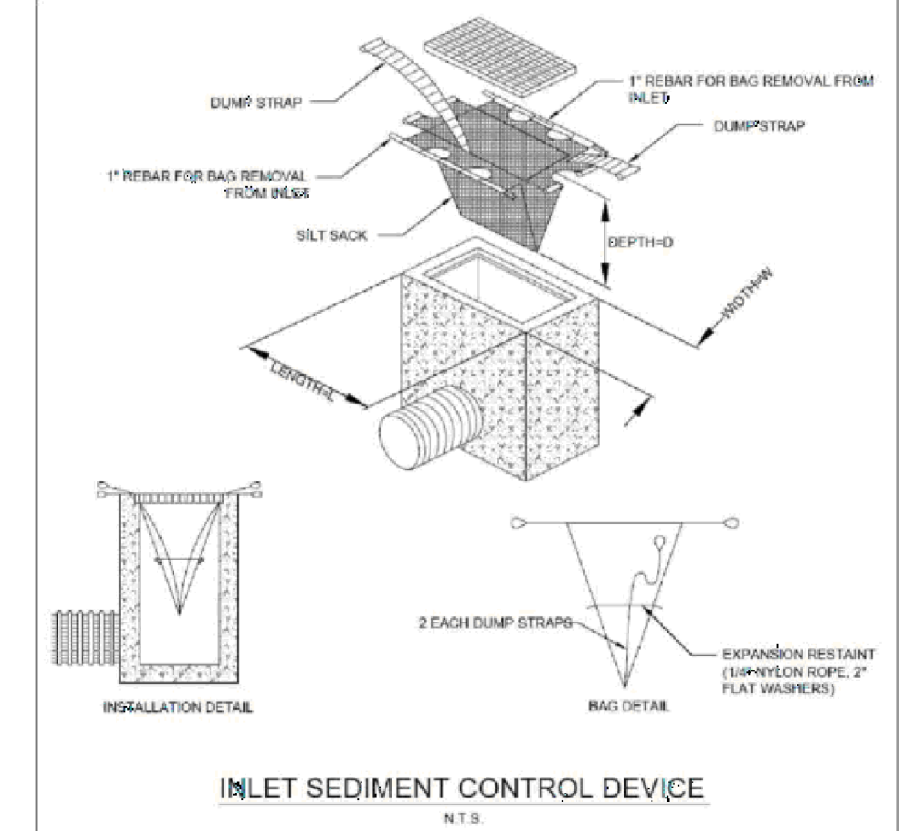


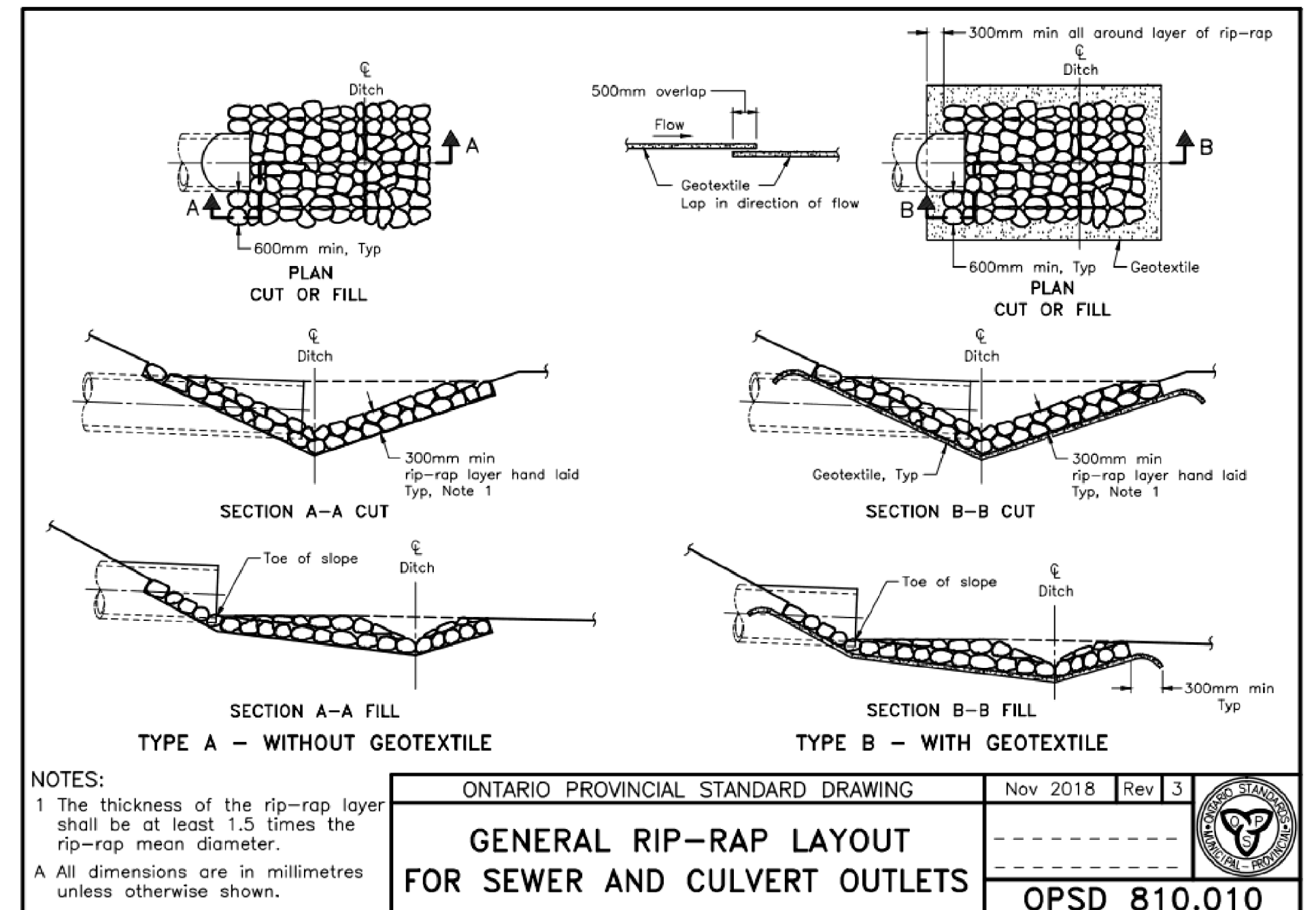
**Erosion and Sediment Control Responsibilities:**

ESC Measure	Symbol	Specification	During Construction		After Construction Prior to Final Acceptance			After Final Acceptance
			Installation Responsibility	Inspection/Maintenance Responsibility	Inspection Frequency	Approval to Remove	Removal Responsibility	
Silt Fence	---	OPSD 219.110	Developer's Contractor	Developer's Contractor	Weekly (as a minimum)	Consultant	Developer's Contractor	N/A
Filter Fabric	---	Location as Indicated in ESC Note #3	Developer's Contractor	Developer's Contractor	Weekly (as a minimum)	Consultant	Developer's Contractor	N/A
Muc Mat	---	Drawing Details	Developer's Contractor	Developer's Contractor	Weekly (as a minimum)	Developer's Contractor	Developer's Contractor	N/A
Dust Control	---	Location as Required Around Site	Developer's Contractor	Developer's Contractor	Weekly (as a minimum)	Consultant	Developer's Contractor	N/A
Stabilized Material Stockpiling	---	Location as Required by Contractor	Developer's Contractor	Developer's Contractor	Weekly (as a minimum)	Developer's Contractor	Developer's Contractor	N/A
Sediment Basin (for flows being pumped out of excavations)	---	Location as Required by Contractor	Developer's Contractor	Developer's Contractor	Alter Every Rainstorm	Developer's Contractor	Developer's Contractor	N/A



**APPROVED**  
 By Allison Hamlin at 5:10 pm, Jan 25, 2023

**Allison Hamlin**  
 MANAGER (A), DEVELOPMENT REVIEW WEST  
 PLANNING, REAL ESTATE & ECONOMIC DEVELOPMENT  
 DEPARTMENT, CITY OF OTTAWA



M:\2021\12-22-2022\12-22-2022-1-143pm\_minibook.dwg

NOTE:  
 THE POSITION OF ALL POLE LINES, CONDUITS, WATERMANS, SEWERS AND OTHER UNDERGROUND AND OVERGROUND UTILITIES AND STRUCTURES IS NOT NECESSARILY SHOWN ON THE CONTRACT DRAWINGS, AND WHERE SHOWN, THE ACCURACY OF THE POSITION OF SUCH UTILITIES AND STRUCTURES IS NOT GUARANTEED. BEFORE STARTING WORK, DETERMINE THE EXACT LOCATION OF ALL SUCH UTILITIES AND STRUCTURES AND ASSUME ALL LIABILITY FOR DAMAGE TO THEM.

**OWNER INFORMATION**  
 U-HAUL CANADA  
 3636 INNES ROAD  
 OTTAWA, ONTARIO, K1C 1T1  
 DAVID POLLOCK  
 PHONE: 1-602-263-6555  
 david.pollock@uhaul.com

No.	REVISION	DATE	BY
2	REVISED PER CITY, MVCA & MTO COMMENTS	DEC 5/22	FST
1	REVISED PER CITY COMMENTS	AUG 30/22	FST

SCALE	DESIGN	FOR REVIEW ONLY		
AS INDICATED	SM / FST	DESIGNED	SM	DEC 5/22
	FST	CHECKED	FST	
	SM	DRAWN	SM	
	SM / FST	CHECKED	SM / FST	
	FST	APPROVED	FST	

**NOVATECH**  
 Engineers, Planners & Landscape Architects  
 Suite 200, 240 Michael Cowpland Drive  
 Ottawa, Ontario, Canada K2M 1P6  
 Telephone: (613) 254-9643  
 Facsimile: (613) 254-5867  
 Website: www.novatech-eng.com

LOCATION CITY OF OTTAWA 30 FRANK NIGHBOR PLACE: U-HAUL SITE		PROJECT No.	121326
DRAWING NAME NOTES AND DETAILS PLAN		REV	REV # 2
		DRAWING No.	121326-NDT2

D07-12-22-008

PROPOSED 200mmØ / 150mmØ WATERMAIN TABLE			
STATION	SURFACE ELEVATION	T/M ELEVATION	COMMENTS
0+000	94.88	91.10	CONNECTION FROM ABOVE TO EX. 300mmØ WM
0+002.5	94.89	93.64	45° VERTICAL BEND
0+003.3	94.98	93.65	CROSS ABOVE EX. 450Ø SAN (±1.8m CLEARANCE)
0+005.0	95.01	93.75	CROSS BELOW EX. 1050Ø STM (±0.3m CLEARANCE)
0+005.5	94.93	93.67	45° VERTICAL BEND
0+006.1	94.94	93.16	45° VERTICAL BEND
0+006.4	94.95	93.15	200mmØ VALVE AND VALVE BOX
0+007.4	95.04	93.12	11.25° HORIZONTAL BEND
0+025.9	95.02	92.62	CROSS BELOW 375mmØ STM (±0.55m CLEARANCE)
0+027.4	95.07	92.67	CROSS ABOVE 200mmØ SAN (±0.4m CLEARANCE)
0+029.9	95.15	92.75	200 x 200 x 200 TEE FOR BLDG 'D' SERVICE (1+000)
0+050	95.18	92.78	---
0+075	95.21	92.81	---
0+082.4	95.14	92.74	200 x 200 x 150 TEE FOR HYDRANT No.1
0+088.6	95.08	92.68	200 x 200 x 150 TEE FOR BLDG 'A' SERVICE (2+000)
0+091.6	95.04	92.64	CROSS BELOW 375mmØ STM (±0.5m CLEARANCE)
0+100	95.12	92.62	---
0+116.0	95.14	92.47	200 x 200 x 150 TEE FOR HYDRANT No.2
0+126.0	95.04	92.64	CROSS BELOW 375mmØ STM (±0.65m CLEARANCE)
0+129.6	95.07	92.67	22.5° HORIZONTAL BEND
0+150	95.35	92.95	---
0+170.7	95.31	92.91	CROSS BELOW 375mmØ STM (±0.6m CLEARANCE)
0+173.2	95.32	92.92	200 x 150 REDUCER
0+174.2	95.34	92.94	150mmØ VALVE AND VALVE BOX
0+180.2	95.41	93.00	FIRE HYDRANT No.3
1+000	95.15	92.75	200 x 200 x 200 TEE FOR BLDG 'D' SERVICE (0+029.9)
1+003.0	95.14	92.74	200mmØ VALVE AND VALVE BOX
1+025.0	95.02	92.62	CROSS BELOW 375mmØ STM (±0.7m CLEARANCE)
1+033.7	95.10	92.70	45° HORIZONTAL BEND
1+037.1	95.18	92.78	45° HORIZONTAL BEND
1+042.2	95.48	92.95	CAP 1.0m FROM BLDG 'D' FOUNDATION WALL
2+000	95.08	92.68	200 x 200 x 150 TEE FOR BLDG 'A' SERVICE (0+088.6)
2+002.5	95.09	92.67	22.5° VERTICAL BEND
2+004.4	95.10	91.88	22.5° VERTICAL BEND
2+005.5	95.06	91.88	CROSS BELOW 200mmØ SAN (±0.5m CLEARANCE)
2+006.6	95.12	91.88	22.5° VERTICAL BEND
2+008.3	95.18	92.58	22.5° VERTICAL BEND
2+010.1	95.19	92.60	CROSS BELOW 375mmØ STM (±0.5m CLEARANCE)
2+025	95.33	92.93	---
2+035.1	95.37	92.93	45° HORIZONTAL BEND
2+036.8	95.40	92.95	150mmØ VALVE AND VALVE BOX
2+038.5	95.49	92.95	45° HORIZONTAL BEND
2+039.1	95.52	92.95	CAP 1.0m FROM BLDG 'A' FOUNDATION WALL

300mm x 300mm x 200mm CONNECTION TO EXISTING 300mmØ WATERMAIN BY CITY FORCES. EXACT ELEVATION TO BE FIELD DETERMINED.  
 PROVIDE THERMAL INSULATION AS PER CITY OF OTTAWA DETAIL W22 IN SHALLOW TRENCHES AND/OR CITY OF OTTAWA DETAIL W23 ADJACENT TO OPEN STRUCTURES.

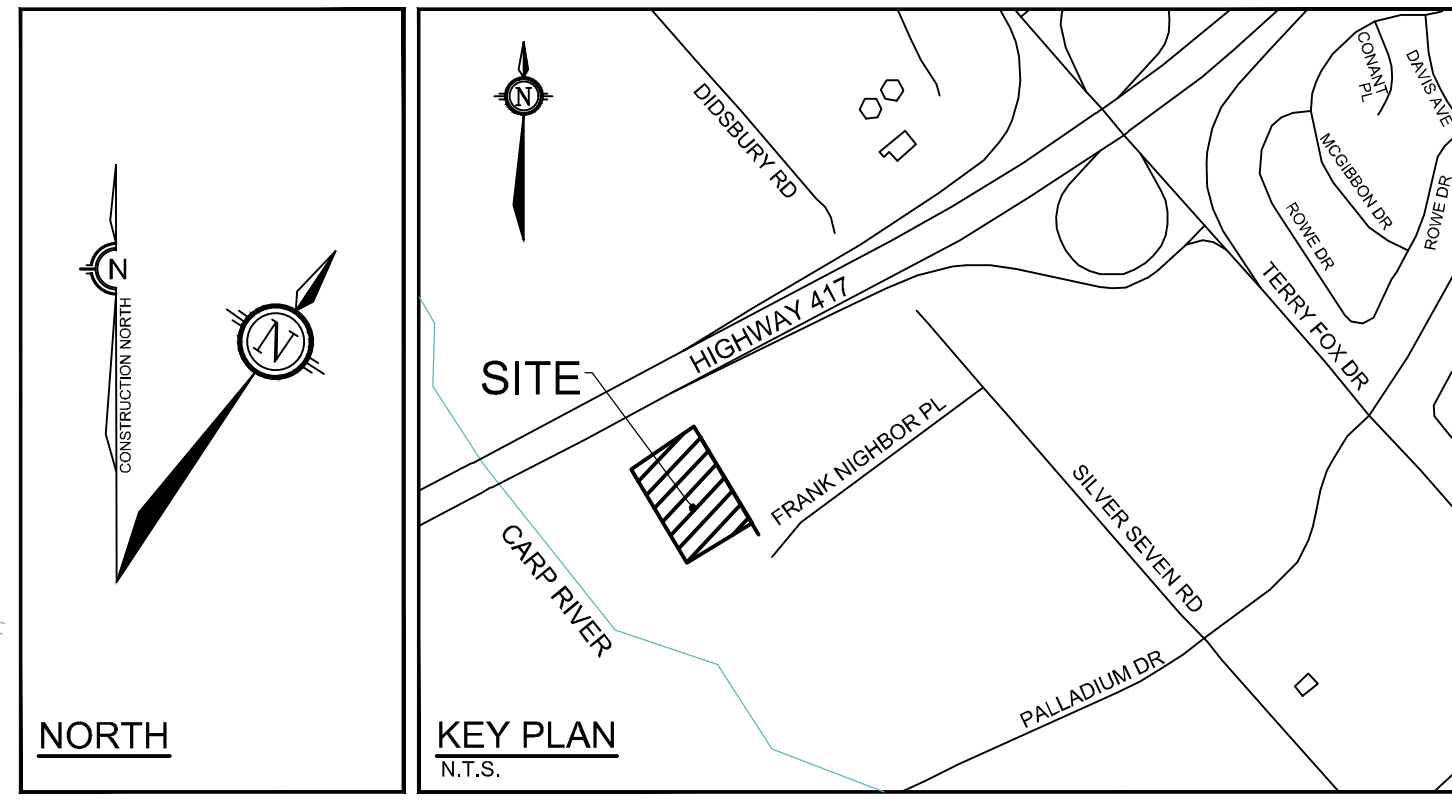
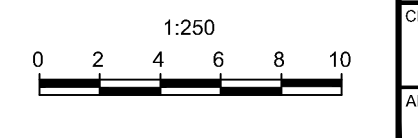
NOTE: THE POSITION OF ALL POLE LINES, CONDUITS, WATERMANS, SEWERS AND OTHER UNDERGROUND AND OVERGROUND UTILITIES AND STRUCTURES IS NOT NECESSARILY SHOWN ON THE CONTRACT DRAWINGS, AND WHERE SHOWN, THE ACCURACY OF THE POSITION OF SUCH UTILITIES AND STRUCTURES IS NOT GUARANTEED. BEFORE STARTING WORK, DETERMINE THE EXACT LOCATION OF ALL SUCH UTILITIES AND STRUCTURES AND ASSUME ALL LIABILITY FOR DAMAGE TO THEM.

**OWNER INFORMATION**  
 U-HAUL CANADA  
 3636 INNES ROAD  
 OTTAWA, ONTARIO, K1C 1T1  
 DAVID POLLOCK  
 PHONE: 1-602-263-6555  
 david.pollock@uhaul.com

REFER TO PLAN 121326-GP2 FOR CONTINUATION OF PROPOSED SITE SERVICING

No.	REVISION	DATE	BY
3	REVISED PER CITY, MVCA & MTO COMMENTS	DEC 5/22	FST
2	REVISED PER CITY COMMENTS	AUG 30/22	FST
1	ISSUED FOR SITE PLAN APPROVAL	MAY 20/22	FST

DESIGN	SM / FST
CHECKED	FST
DRAWN	SM
CHECKED	SM / FST
APPROVED	FST



- LEGEND**
- PROPERTY LINE
  - PROPOSED SANITARY MH & SEWER
  - PROPOSED CATCHBASIN MANHOLE & SEWER (c/w 3.0m RADIAL SUBDRAINS PER GEOTECH)
  - PROPOSED STORM MANHOLE & SEWER (c/w 3.0m RADIAL SUBDRAINS PER GEOTECH)
  - PROPOSED HYDRANT AND VALVE
  - PROPOSED BARRIER CURB (15cm CURB HEIGHT)
  - DEPRESSED BARRIER CURB (0cm CURB HEIGHT)
  - PROPOSED MOUNTABLE CURB (5cm CURB HEIGHT)
  - DEPRESSED MOUNTABLE CURB (0cm CURB HEIGHT)
  - PROPOSED WATERMAIN AND DIAMETER
  - PROPOSED VALVE AND VALVEBOX
  - PROPOSED BEND AND THRUSTBLOCK 11.25°, 22.5°, 45° or TEE
  - PROPOSED WATER METER AND REMOTE METER
  - PROPOSED CAP
  - PROPOSED RESTRICTOR PIPE / INLET CONTROL DEVICE
  - PROPOSED DOWNSPOUT LOCATION
  - THERMAL INSULATION FOR SHALLOW SEWERS
  - PROPOSED BUILDING ENTRANCE
  - PROPOSED CLAY SEAL SEEPAGE BARRIER (PER GEOTECHNICAL REPORT)
  - PROPOSED SITE LIGHTING POLE (REFER TO ELEC)
  - PROPOSED TRANSFORMER
  - EXISTING CONCRETE CURB
  - EXISTING SANITARY MANHOLE AND SEWER
  - EXISTING CATCHBASIN MANHOLE AND SEWER
  - EXISTING STORM MANHOLE AND SEWER
  - EXISTING CATCHBASIN C/W CATCHBASIN LEAD
  - EXISTING HYDRANT
  - EXISTING UTILITY POLE C/W CUY WIRES
  - EXISTING WATERMAIN
  - EXISTING HYDRANT C/W VALVE & LEAD
  - EXISTING LIGHT STANDARD
  - EXISTING FENCE
  - EXISTING OVERHEAD UTILITY WIRES

**APPROVED**  
 By Allison Hamlin at 5:10 pm, Jan 25, 2023

*Allison Hamlin*  
**ALLISON HAMLIN**  
 MANAGER (A), DEVELOPMENT REVIEW WEST  
 PLANNING, REAL ESTATE & ECONOMIC DEVELOPMENT  
 DEPARTMENT, CITY OF OTTAWA

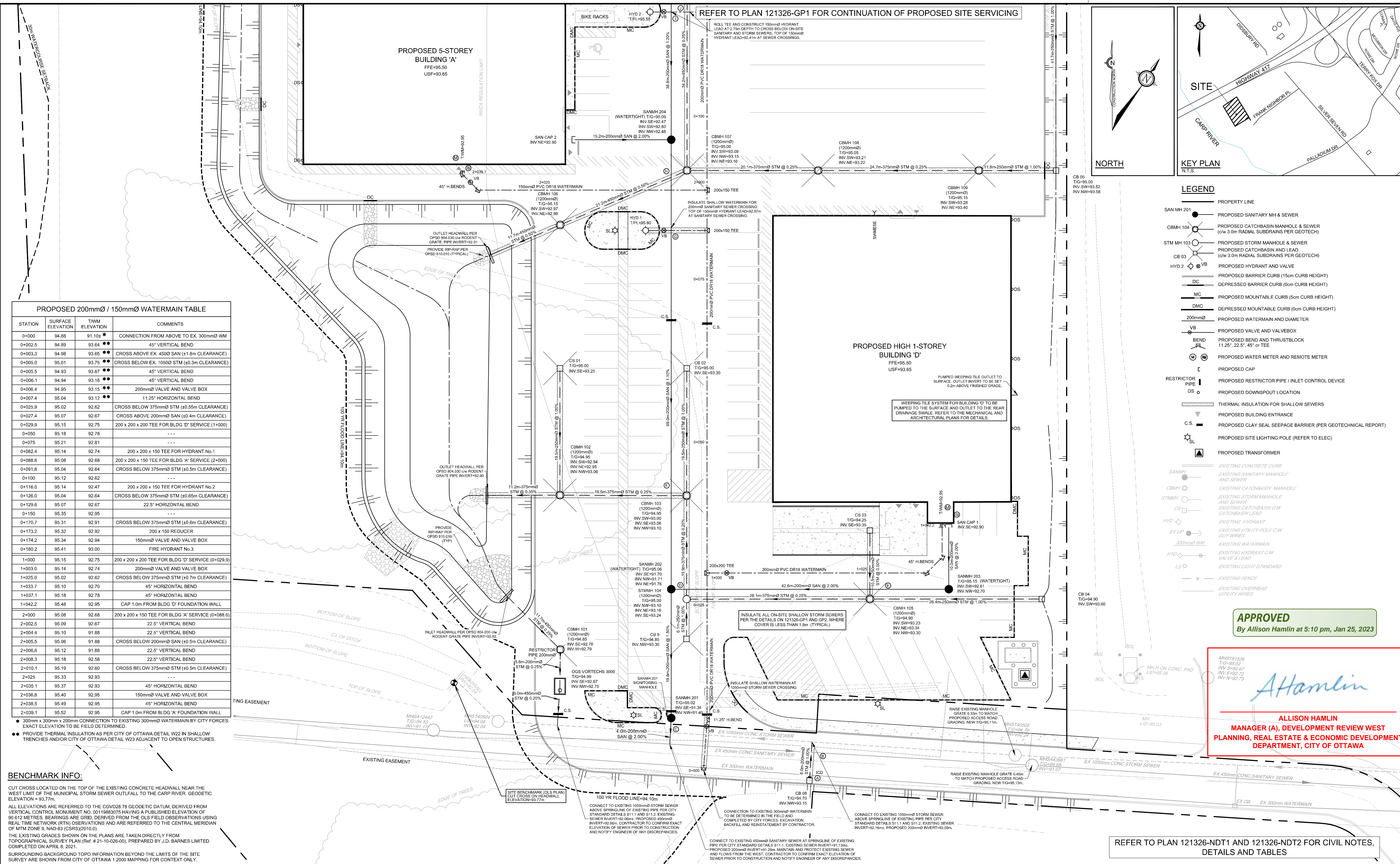
**BENCHMARK INFO:**  
 CUT CROSS LOCATED ON THE TOP OF THE EXISTING CONCRETE HEADWALL NEAR THE WEST LIMIT OF THE MUNICIPAL STORM SEWER OUTFALL TO THE CARP RIVER. GEODETIC ELEVATION = 93.77m.  
 ALL ELEVATIONS ARE REFERRED TO THE COVID2878 GEODETIC DATUM, DERIVED FROM VERTICAL CONTROL MONUMENT NO. 00119883075 HAVING A PUBLISHED ELEVATION OF 90.612 METRES. BEARINGS ARE GRID, DERIVED FROM THE OLS FIELD OBSERVATIONS USING REAL-TIME NETWORK (RTN) OBSERVATIONS AND ARE REFERRED TO THE CENTRAL MERIDIAN OF MTM ZONE 9, NAD83 (CSRS0210.0).  
 THE EXISTING GRADES SHOWN ON THE PLANS ARE TAKEN DIRECTLY FROM TOPOGRAPHICAL SURVEY PLAN (Ref. # 21-10-026-00), PREPARED BY J.D. BARNES LIMITED COMPLETED ON APRIL 8, 2021.  
 SURROUNDING BACKGROUND TOPO INFORMATION BEYOND THE LIMITS OF THE SITE SURVEY ARE SHOWN FROM CITY OF OTTAWA 1:2000 MAPPING FOR CONTEXT ONLY.

REFER TO PLAN 121326-NDT1 AND 121326-NDT2 FOR CIVIL NOTES, DETAILS AND TABLES

LOCATION CITY OF OTTAWA 30 FRANK NIGHBOR PLACE: U-HAUL SITE	PROJECT No. 121326
DRAWING NAME GENERAL PLAN OF SERVICES	REV # REV # 3
NOVATECH Engineers, Planners & Landscape Architects Suite 200, 240 Michael Cowpland Drive Ottawa, Ontario, Canada K2M 1P6 Telephone (613) 254-9643 Facsimile (613) 254-5867 Website www.novatech-eng.com	DRAWING No. 121326-GP1



D07-12-22-0088



**PROPOSED 200mmØ / 150mmØ WATERMAIN TABLE**

STATION	SURFACE ELEVATION	TWMM ELEVATION	COMMENTS
0+000	94.88	91.10	CONNECTION FROM ABOVE TO EX. 300mmØ WM
0+002.5	94.89	93.64	45° VERTICAL BEND
0+003.3	94.98	93.65	CROSS ABOVE EX. 4500 SAN (±1.8m CLEARANCE)
0+005.0	95.01	93.75	CROSS BELOW EX. 10500 STM (±0.3m CLEARANCE)
0+005.5	94.93	93.67	45° VERTICAL BEND
0+006.1	94.94	93.16	45° VERTICAL BEND
0+006.4	94.95	93.15	200mmØ VALVE AND VALVE BOX
0+007.4	95.04	93.12	11.25° HORIZONTAL BEND
0+025.9	95.02	92.62	CROSS BELOW 375mmØ STM (±0.55m CLEARANCE)
0+027.4	95.07	92.67	CROSS ABOVE 200mmØ SAN (±0.4m CLEARANCE)
0+029.9	95.15	92.75	200 x 200 x 200 TEE FOR BLDG 'D' SERVICE (1+000)
0+050	95.18	92.78	---
0+075	95.21	92.81	---
0+082.4	95.14	92.74	200 x 200 x 150 TEE FOR HYDRANT No.1
0+088.6	95.08	92.68	200 x 200 x 150 TEE FOR BLDG 'A' SERVICE (2+000)
0+091.6	95.04	92.64	CROSS BELOW 375mmØ STM (±0.5m CLEARANCE)
0+100	95.12	92.62	---
0+116.0	95.14	92.47	200 x 200 x 150 TEE FOR HYDRANT No.2
0+126.0	95.04	92.64	CROSS BELOW 375mmØ STM (±0.65m CLEARANCE)
0+129.6	95.07	92.67	22.5° HORIZONTAL BEND
0+150	95.35	92.95	---
0+170.7	95.31	92.91	CROSS BELOW 375mmØ STM (±0.6m CLEARANCE)
0+173.2	95.32	92.92	200 x 150 REDUCER
0+174.2	95.34	92.94	150mmØ VALVE AND VALVE BOX
0+180.2	95.41	93.00	FIRE HYDRANT No.3
1+000	95.15	92.75	200 x 200 x 200 TEE FOR BLDG 'D' SERVICE (0+029.9)
1+003.0	95.14	92.74	200mmØ VALVE AND VALVE BOX
1+025.0	95.02	92.62	CROSS BELOW 375mmØ STM (±0.7m CLEARANCE)
1+033.7	95.10	92.70	45° HORIZONTAL BEND
1+037.1	95.18	92.78	45° HORIZONTAL BEND
1+042.2	95.48	92.95	CAP 1.0m FROM BLDG 'D' FOUNDATION WALL
2+000	95.08	92.68	200 x 200 x 150 TEE FOR BLDG 'A' SERVICE (0+088.6)
2+002.5	95.09	92.67	22.5° VERTICAL BEND
2+004.4	95.10	91.88	22.5° VERTICAL BEND
2+005.5	95.06	91.88	CROSS BELOW 200mmØ SAN (±0.5m CLEARANCE)
2+006.6	95.12	91.88	22.5° VERTICAL BEND
2+008.3	95.18	92.58	22.5° VERTICAL BEND
2+010.1	95.19	92.60	CROSS BELOW 375mmØ STM (±0.5m CLEARANCE)
2+025	95.33	92.93	---
2+035.1	95.37	92.93	45° HORIZONTAL BEND
2+036.8	95.40	92.95	150mmØ VALVE AND VALVE BOX
2+038.5	95.49	92.95	45° HORIZONTAL BEND
2+039.1	95.52	92.95	CAP 1.0m FROM BLDG 'A' FOUNDATION WALL

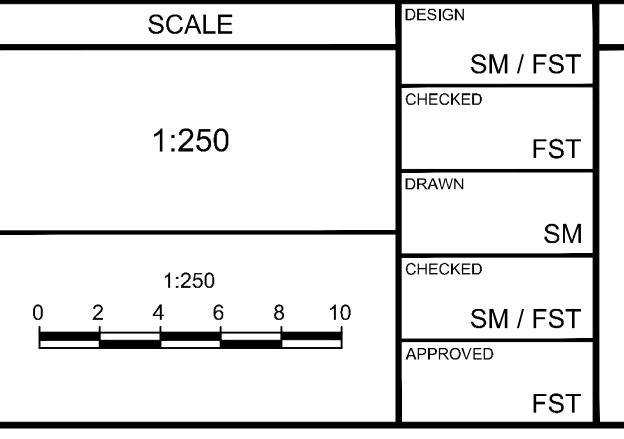
\* 300mm x 300mm x 200mm CONNECTION TO EXISTING 300mmØ WATERMAIN BY CITY FORCES EXACT ELEVATION TO BE FIELD DETERMINED.  
 \*\* PROVIDE THERMAL INSULATION AS PER CITY OF OTTAWA DETAIL W22 IN SHALLOW TRENCHES AND/OR CITY OF OTTAWA DETAIL W23 ADJACENT TO OPEN STRUCTURES.

**BENCHMARK INFO:**  
 CUT CROSS LOCATED ON THE TOP OF THE EXISTING CONCRETE HEADWALL NEAR THE WEST LIMIT OF THE MUNICIPAL STORM SEWER OUTFALL TO THE CARRP RIVER. GEODETIC ELEVATION = 93.77m.  
 ALL ELEVATIONS ARE REFERRED TO THE CGVD28 78 GEODETIC DATUM DERIVED FROM VERTICAL CONTROL MONUMENT NO. 00119883075 HAVING A PUBLISHED ELEVATION OF 90.612 METRES. BEARINGS ARE GRID, DERIVED FROM THE OLS FIELD OBSERVATIONS USING REAL TIME NETWORK (RTN) OBSERVATIONS AND ARE REFERRED TO THE CENTRAL MERIDIAN OF MTM ZONE 9, NAD-83 (CSRS)2010.0.  
 THE EXISTING GRADES SHOWN ON THE PLANS ARE TAKEN DIRECTLY FROM TOPOGRAPHICAL SURVEY PLAN (Ref. # 21-10-028-00), PREPARED BY J.D. BARNES LIMITED COMPLETED ON APRIL 8, 2021.  
 SURROUNDING BACKGROUND TOPO INFORMATION BEYOND THE LIMITS OF THE SITE SURVEY ARE SHOWN FROM CITY OF OTTAWA 1:2000 MAPPING FOR CONTEXT ONLY.

**NOTE:**  
 THE POSITION OF ALL POLE LINES, CONDUITS, WATERMANS, SEWERS AND OTHER UNDERGROUND AND OVERGROUND UTILITIES AND STRUCTURES IS NOT NECESSARILY SHOWN ON THE CONTRACT DRAWINGS, AND WHERE SHOWN, THE ACCURACY OF THE POSITION OF SUCH UTILITIES AND STRUCTURES IS NOT GUARANTEED. BEFORE STARTING WORK, DETERMINE THE EXACT LOCATION OF ALL SUCH UTILITIES AND STRUCTURES AND ASSUME ALL LIABILITY FOR DAMAGE TO THEM.

**OWNER INFORMATION**  
 U-HAUL CANADA  
 3636 INNES ROAD  
 OTTAWA, ONTARIO, K1C 1T1  
 DAVID POLLOCK  
 PHONE: 1-602-263-6555  
 david.pollock@uhaul.com

No.	REVISION	DATE	BY
3	REVISED PER CITY, MVCA & MTO COMMENTS	DEC 5/22	FST
2	REVISED PER CITY COMMENTS	AUG 30/22	FST
1	ISSUED FOR SITE PLAN APPROVAL	MAY 20/22	FST



**FOR REVIEW ONLY**

DESIGN	SM / FST
CHECKED	FST
DRAWN	SM
CHECKED	SM / FST
APPROVED	FST



**NOVATECH**  
 Engineers, Planners & Landscape Architects  
 Suite 200, 240 Michael Cowpland Drive  
 Ottawa, Ontario, Canada K2M 1P6  
 Telephone: (613) 254-9643  
 Facsimile: (613) 254-5867  
 Website: www.novatech-eng.com

**LOCATION**  
 CITY OF OTTAWA  
 30 FRANK NIGHBOR PLACE: U-HAUL SITE

**DRAWING NAME**  
 GENERAL PLAN OF SERVICES

PROJECT No. 121326  
 REV # 3  
 DRAWING No. 121326-GP2  
 Plan #18789

**APPROVED**  
 By Allison Hamlin at 5:10 pm, Jan 25, 2023

*Allison Hamlin*  
**ALLISON HAMLIN**  
 MANAGER (A), DEVELOPMENT REVIEW WEST  
 PLANNING, REAL ESTATE & ECONOMIC DEVELOPMENT  
 DEPARTMENT, CITY OF OTTAWA

REFER TO PLAN 121326-NDT1 AND 121326-NDT2 FOR CIVIL NOTES, DETAILS AND TABLES

M:\2021\121326-GP2\121326-GP2.dwg, Dec 01, 2022, 12:43pm, mhamlin

D07-12-22-008

**APPROVED**  
By Allison Hamlin at 5:10 pm, Jan 25, 2023

**ALLISON HAMLIN**  
MANAGER (A), DEVELOPMENT REVIEW WEST  
PLANNING, REAL ESTATE & ECONOMIC DEVELOPMENT  
DEPARTMENT, CITY OF OTTAWA

*Allison Hamlin*

NOTE:  
THE POSITION OF ALL POLE LINES, CONDUITS,  
WATERMANS, SEWERS AND OTHER  
UNDERGROUND AND OVERGROUND UTILITIES AND  
STRUCTURES IS NOT NECESSARILY SHOWN ON  
THE CONTRACT DRAWINGS, AND WHERE SHOWN,  
THE ACCURACY OF THE POSITION OF SUCH  
UTILITIES AND STRUCTURES IS NOT GUARANTEED.  
BEFORE STARTING WORK, DETERMINE THE EXACT  
LOCATION OF ALL SUCH UTILITIES AND  
STRUCTURES AND ASSUME ALL LIABILITY FOR  
DAMAGE TO THEM.

**OWNER INFORMATION**  
U-HAUL CANADA  
3636 INNES ROAD  
OTTAWA, ONTARIO, K1C 1T1  
DAVID POLLOCK  
PHONE: 1-602-263-6555  
david.pollock@uhaul.com

No.	REVISION	DATE	BY
3	REVISED PER CITY, MVCA & MTO COMMENTS	DEC 5/22	FST
2	REVISED PER CITY COMMENTS	AUG 30/22	FST
1	ISSUED FOR SITE PLAN APPROVAL	MAY 20/22	FST

DESIGN	SM / FST
CHECKED	FST
DRAWN	SM
CHECKED	SM / FST
APPROVED	FST

SCALE  
1:250

FOR REVIEW ONLY

PROFESSIONAL ENGINEER  
M. J. HREHORIAK  
10021236  
DEC 5/22  
PROVINCE OF ONTARIO

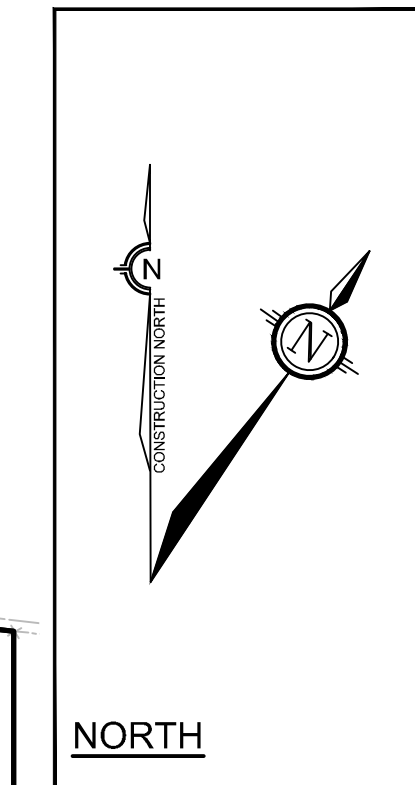
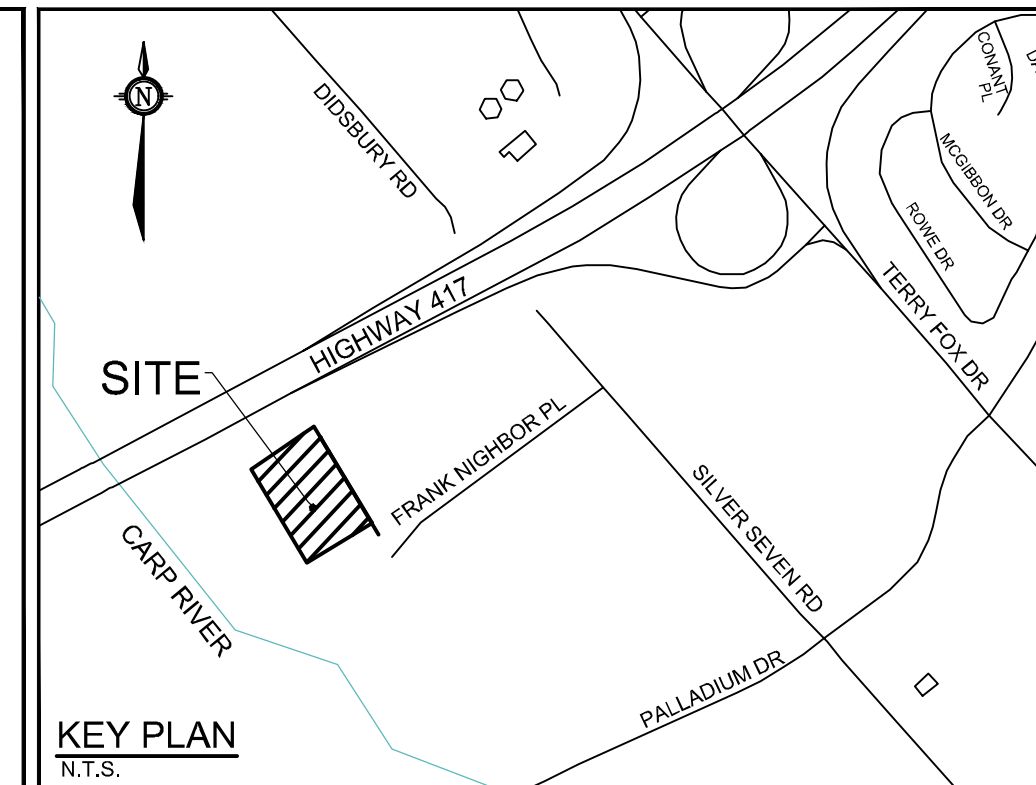
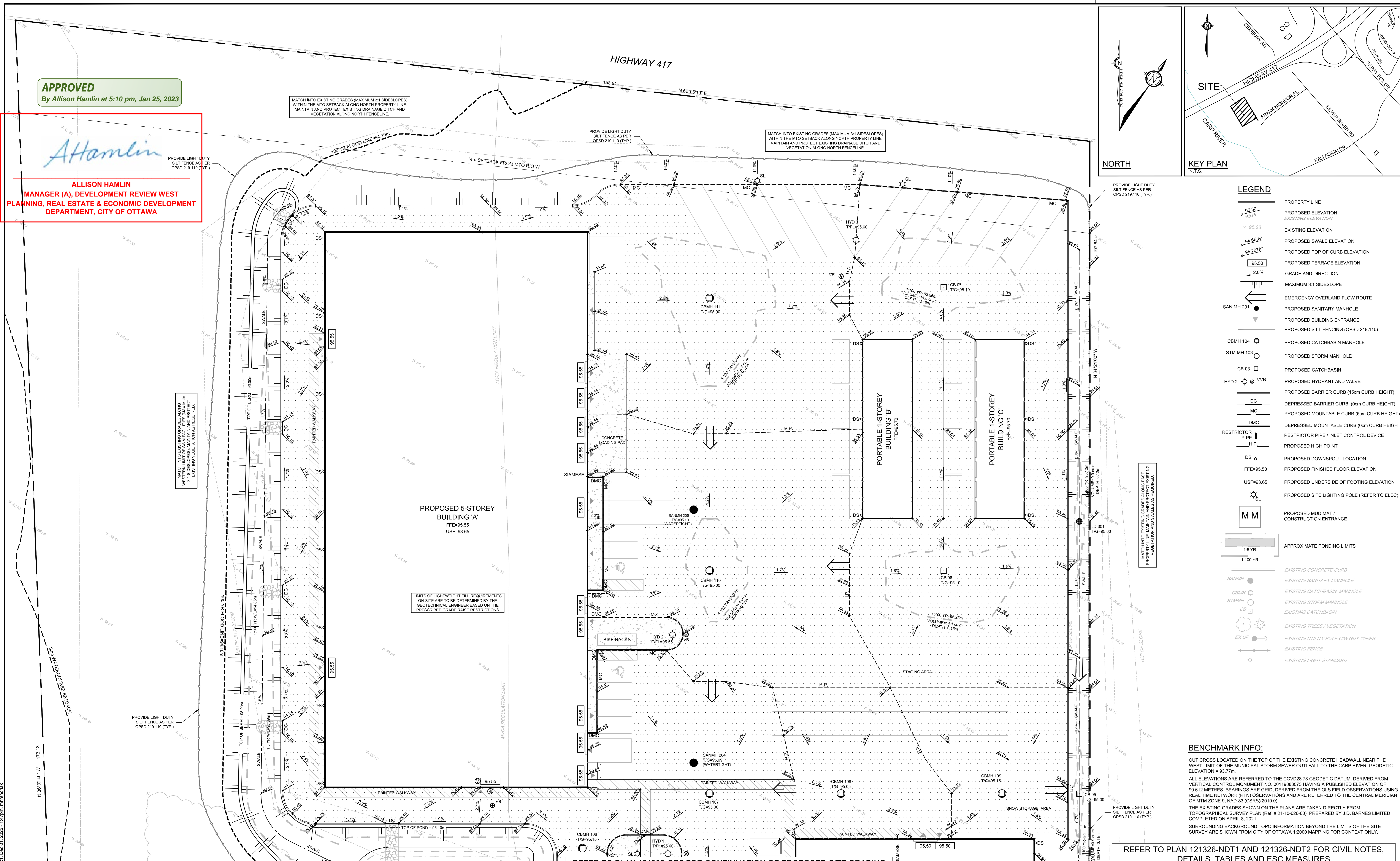
**NOVATECH**  
Engineers, Planners & Landscape Architects  
Suite 200, 240 Michael Cowpland Drive  
Ottawa, Ontario, Canada K2M 1P6  
Telephone: (613) 254-9643  
Facsimile: (613) 254-5867  
Website: www.novatech-eng.com

PROJECT No.	121326
REV	REV # 3
DRAWING No.	121326-GR1

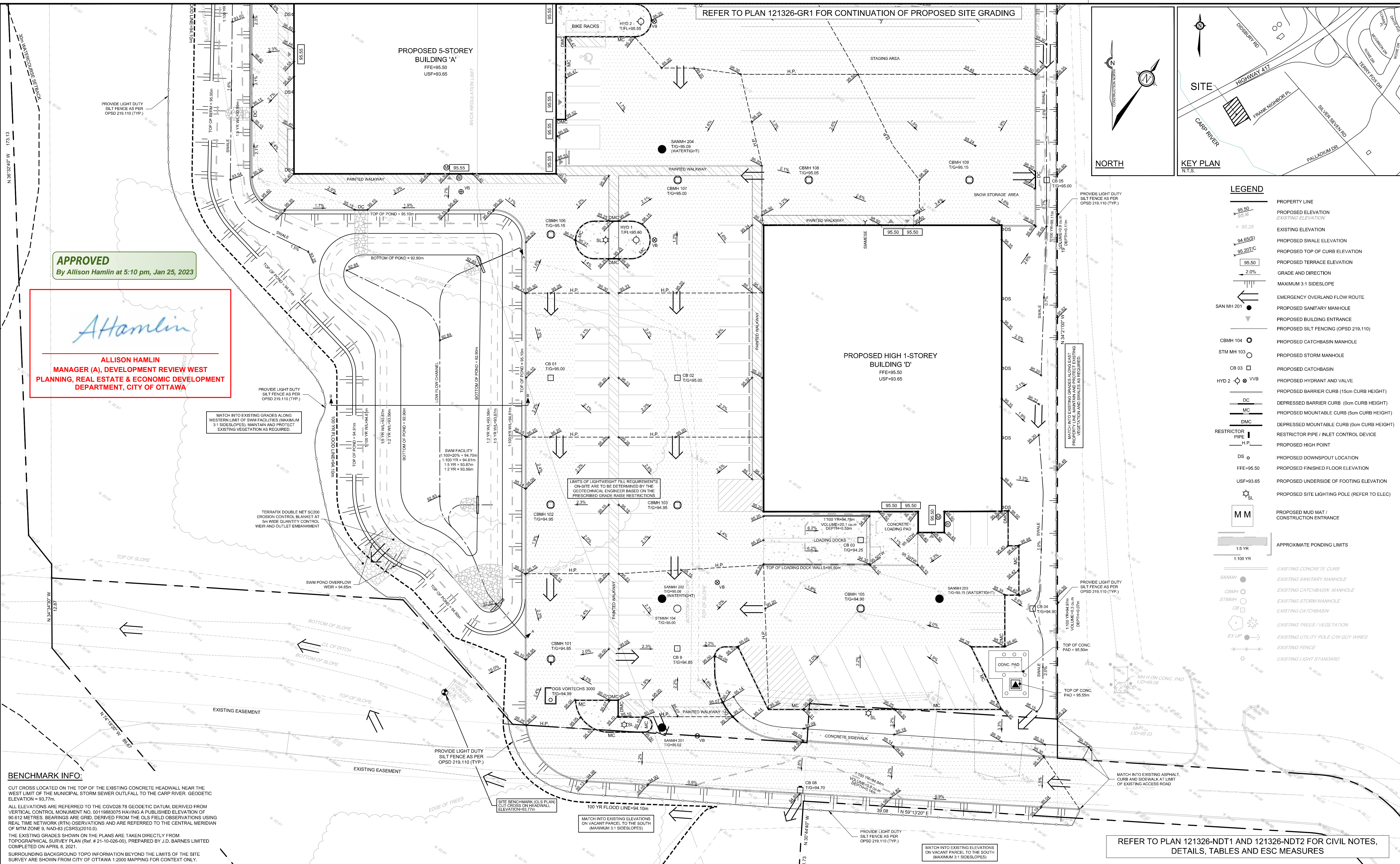
LOCATION  
CITY OF OTTAWA  
30 FRANK NIGHBOR PLACE: U-HAUL SITE

DRAWING NAME  
**GRADING AND EROSION & SEDIMENT CONTROL PLAN**

Plan #18789

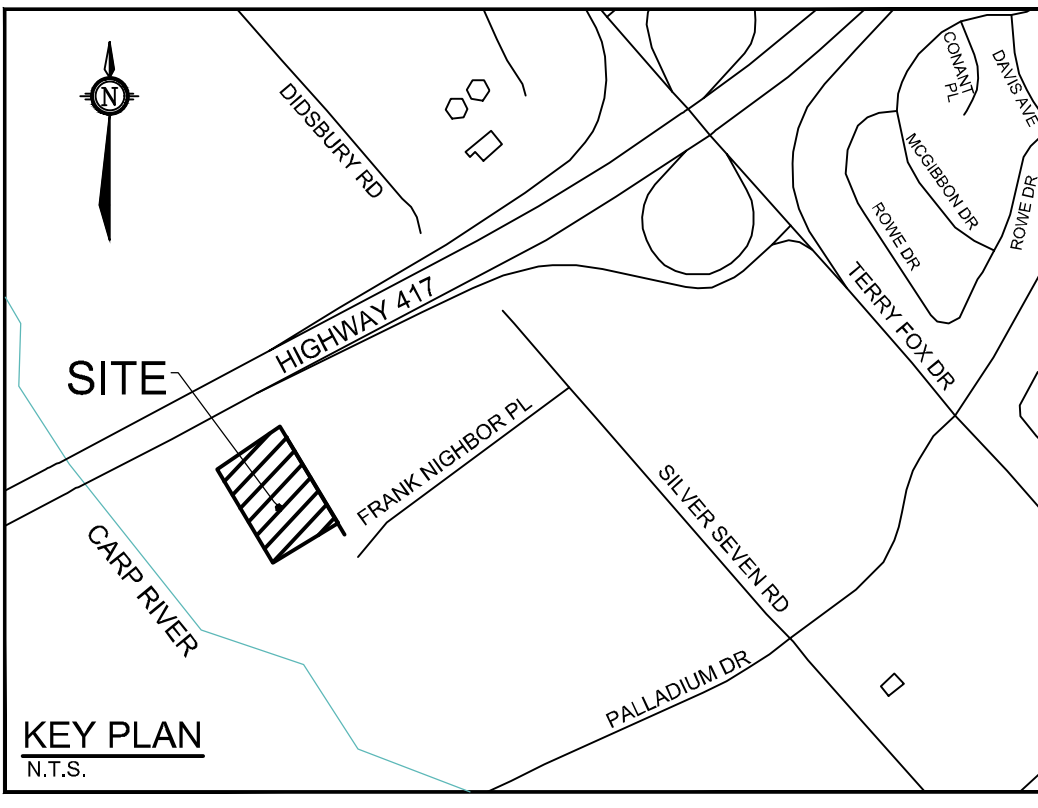


M:\2021\121326\CD\Drawing\121326-GR.dwg, GR1, Dec 01, 2022, 1:47pm, m.mehrotra



**APPROVED**  
By Allison Hamlin at 5:10 pm, Jan 25, 2023

*Allison Hamlin*  
**ALLISON HAMLIN**  
MANAGER (A), DEVELOPMENT REVIEW WEST  
PLANNING, REAL ESTATE & ECONOMIC DEVELOPMENT  
DEPARTMENT, CITY OF OTTAWA



**LEGEND**

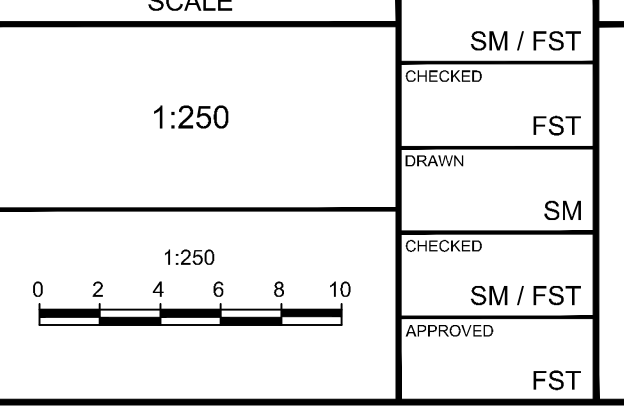
	PROPERTY LINE
	PROPOSED ELEVATION
	EXISTING ELEVATION
	PROPOSED SWALE ELEVATION
	PROPOSED TOP OF CURB ELEVATION
	PROPOSED TERRACE ELEVATION
	GRADE AND DIRECTION
	MAXIMUM 3:1 SIDESLOPE
	EMERGENCY OVERLAND FLOW ROUTE
	PROPOSED SANITARY MANHOLE
	PROPOSED BUILDING ENTRANCE
	PROPOSED SILT FENCING (OPSD 219.110)
	PROPOSED CATCHBASIN MANHOLE
	PROPOSED STORM MANHOLE
	PROPOSED CATCHBASIN
	PROPOSED HYDRANT AND VALVE
	PROPOSED BARRIER CURB (15cm CURB HEIGHT)
	PROPOSED MOUNTABLE CURB (5cm CURB HEIGHT)
	PROPOSED MOUNTABLE CURB (0cm CURB HEIGHT)
	RESTRICTOR PIPE / INLET CONTROL DEVICE
	PROPOSED HIGH POINT
	PROPOSED DOWNSPOUT LOCATION
	PROPOSED FINISHED FLOOR ELEVATION
	PROPOSED UNDERSIDE OF FOOTING ELEVATION
	PROPOSED SITE LIGHTING POLE (REFER TO ELEC)
	PROPOSED MUD MAT / CONSTRUCTION ENTRANCE
	APPROXIMATE PONDING LIMITS
	EXISTING CONCRETE CURB
	EXISTING SANITARY MANHOLE
	EXISTING CATCHBASIN MANHOLE
	EXISTING STORM MANHOLE
	EXISTING CATCHBASIN
	EXISTING TREES / VEGETATION
	EXISTING UTILITY POLE C/W GUY WIRES
	EXISTING FENCE
	EXISTING LIGHT STANDARD

**BENCHMARK INFO:**  
CUT CROSS LOCATED ON THE TOP OF THE EXISTING CONCRETE HEADWALL NEAR THE WEST LIMIT OF THE MUNICIPAL STORM SEWER OUTFALL TO THE CARP RIVER. GEODETIC ELEVATION = 93.77m.  
ALL ELEVATIONS ARE REFERRED TO THE CGVD28-78 GEODETIC DATUM, DERIVED FROM VERTICAL CONTROL MONUMENT NO. 00119883075 HAVING A PUBLISHED ELEVATION OF 90.612 METRES. BEARINGS ARE GRID, DERIVED FROM THE OLS FIELD OBSERVATIONS USING REAL TIME NETWORK (RTN) OBSERVATIONS AND ARE REFERRED TO THE CENTRAL MERIDIAN OF MTM ZONE 9, NAD-83 (CSRS) (2010.0).  
THE EXISTING GRADES SHOWN ON THE PLANS ARE TAKEN DIRECTLY FROM TOPOGRAPHICAL SURVEY PLAN (Ref. # 21-1028-00), PREPARED BY J.D. BARNES LIMITED COMPLETED ON APRIL 8, 2021.  
SURROUNDING BACKGROUND TOPO INFORMATION BEYOND THE LIMITS OF THE SITE SURVEY ARE SHOWN FROM CITY OF OTTAWA 1:2000 MAPPING FOR CONTEXT ONLY.

**NOTE:**  
THE POSITION OF ALL POLE LINES, CONDUITS, WATERMANS, SEWERS AND OTHER UNDERGROUND AND OVERGROUND UTILITIES AND STRUCTURES IS NOT NECESSARILY SHOWN ON THE CONTRACT DRAWINGS, AND WHERE SHOWN, THE ACCURACY OF THE POSITION OF SUCH UTILITIES AND STRUCTURES IS NOT GUARANTEED. BEFORE STARTING WORK, DETERMINE THE EXACT LOCATION OF ALL SUCH UTILITIES AND STRUCTURES AND ASSUME ALL LIABILITY FOR DAMAGE TO THEM.

**OWNER INFORMATION**  
U-HAUL CANADA  
3636 INNES ROAD  
OTTAWA, ONTARIO, K1C 1T1  
DAVID POLLOCK  
PHONE: 1-602-263-6555  
david.pollock@uhaul.com

No.	REVISION	DATE	BY
3	REVISED PER CITY, MVCA & MTO COMMENTS	DEC 5/22	FST
2	REVISED PER CITY COMMENTS	AUG 30/22	FST
1	ISSUED FOR SITE PLAN APPROVAL	MAY 20/22	FST



**FOR REVIEW ONLY**

DESIGN	SM / FST
CHECKED	FST
DRAWN	SM
CHECKED	SM / FST
APPROVED	FST



**NOVATECH**  
Engineers, Planners & Landscape Architects  
Suite 200, 240 Michael Cowpland Drive  
Ottawa, Ontario, Canada K2M 1P6  
Telephone: (613) 254-9643  
Facsimile: (613) 254-5867  
Website: www.novatech-eng.com

**LOCATION**  
CITY OF OTTAWA  
30 FRANK NIGHBOR PLACE: U-HAUL SITE

**DRAWING NAME**  
GRADING AND EROSION & SEDIMENT CONTROL PLAN

PROJECT No. 121326  
REV # 3  
DRAWING No. 121326-GR2  
Plan #18789

M:\2021\121326\CD\Drawings\121326-GR2.dwg, GR2, Dec 01, 2022, 4:47pm, mmeroutik

D07-12-22-0088