



EXTERIOR WALL ASSEMBLIES

W1, W1a, W2, W2a. Precast insulated concrete wall, insulated metal wall panel, etc. Includes R-value, cUL #, and detailed cross-sections.

INTERIOR WALL ASSEMBLIES (NON FRR)

W3, W4, W5, W6, W7, W8, W9, W10. Interior wall assemblies for corridors, lockers, etc. Includes R-value, cUL #, and detailed cross-sections.

INTERIOR WALL ASSEMBLIES (FRR) (SLAB TO SLAB PARTITIONS)

W3a, W3b, W3c, W3d, W3e, W3f, W3g, W3h. Fire-rated interior wall assemblies. Includes R-value, cUL #, and detailed cross-sections.

FLOOR AND ROOF ASSEMBLIES

R1, F1, F2. Roof and floor assemblies including roof, first floor, and second/third/fourth/fifth floor. Includes R-value, cUL #, and detailed cross-sections.

CEILING ASSEMBLIES

C1, C2, C3. Gypsum, washroom, and acoustic ceiling assemblies. Includes R-value, cUL #, and detailed cross-sections.

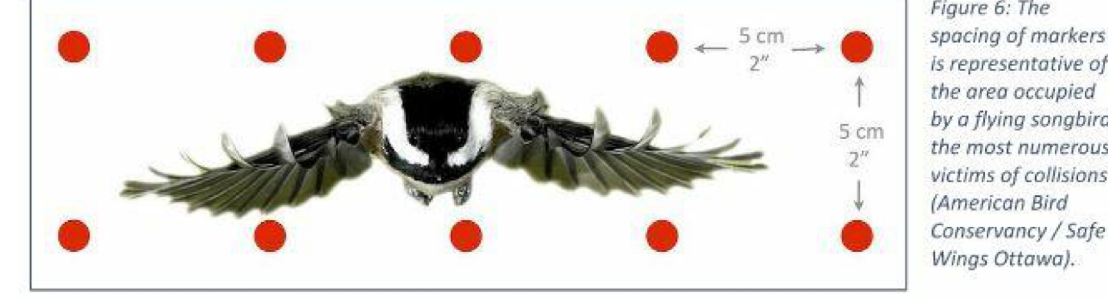
GLAZING SPECIFICATION - BLDG A

GLAZING PERFORMANCE DATA. Product description: STARPHIRE® ULTRA-CLEAR GLASS IS A UNIQUE LOW-IRON GLASS... Includes performance data like transmittance and reflectance.

STORAGE AREA WINDOWS (TYPICAL). Includes diagrams of window types and notes on framing and deflection.

OTTAWA BIRD-SAFE DESIGN GUIDELINE SEPTEMBER 2020. Includes sections on bird-safe glass and green roofs.

Specifications for Bird-Safe Glass. Several techniques can be used to make glass more visible to birds as a solid barrier.



Comply with CSA A460:19 Bird-friendly building design. Visual markers should be used in a glazing unit on the first surface, colour: white

Bird-Safe Designs. Option 1: Threat Factor 10. Option 2: Threat Factor 24. Includes color and pattern specifications for each design.

- 1. WATER-RESISTANT GYPSUM WALL BOARD TO BE USED AT WET LOCATIONS... 2. 8 INCHES EQUIVALENT THICKNESS - 2 HOUR FIRE-RESISTANCE RATING... 3. 7 5/8 INCHES EQUIVALENT THICKNESS - 3 HOUR FIRE-RESISTANCE RATING... 4. NON-LOAD BEARING - 1 HOUR FIRE-RESISTANCE UL ASSEMBLY RATING... 5. ALL WALL AND ROOF INSULATION INFORMATION SHALL BE PER ENERGY CODE ANALYSIS SB-10, UNLESS NOTED OTHERWISE. 6. SEE ENERGY CODE ANALYSIS SB-10 FOR VAPOR AND AIR BARRIER REQUIREMENTS AND LOCATION.

WALL TYPE NOTES

COPYRIGHT The drawing has been prepared solely for the intended use... IBI Group Architects (Canada) Inc.

Table with 3 columns: No., DESCRIPTION, DATE. Includes project milestones like Concept Design, Design Development, etc.



CONSULTANTS ARCHITECTURE / PROJECT MANAGEMENT / TRANSPORTATION: IBI GROUP - OTTAWA

GOODKEY, WEEDMARK & ASSOCIATES LIMITED CONSULTING ENGINEERS 1188 WOODWARD DRIVE, OTTAWA, ON, K2C 3R8

OTTAWA BIRD-SAFE DESIGN GUIDELINE SEPTEMBER 2020. Includes a reference to a 2021-10-07 update.

PRIME CONSULTANT IBI GROUP 400-333 Preston Street, Ottawa ON, K1S 5N4, Canada

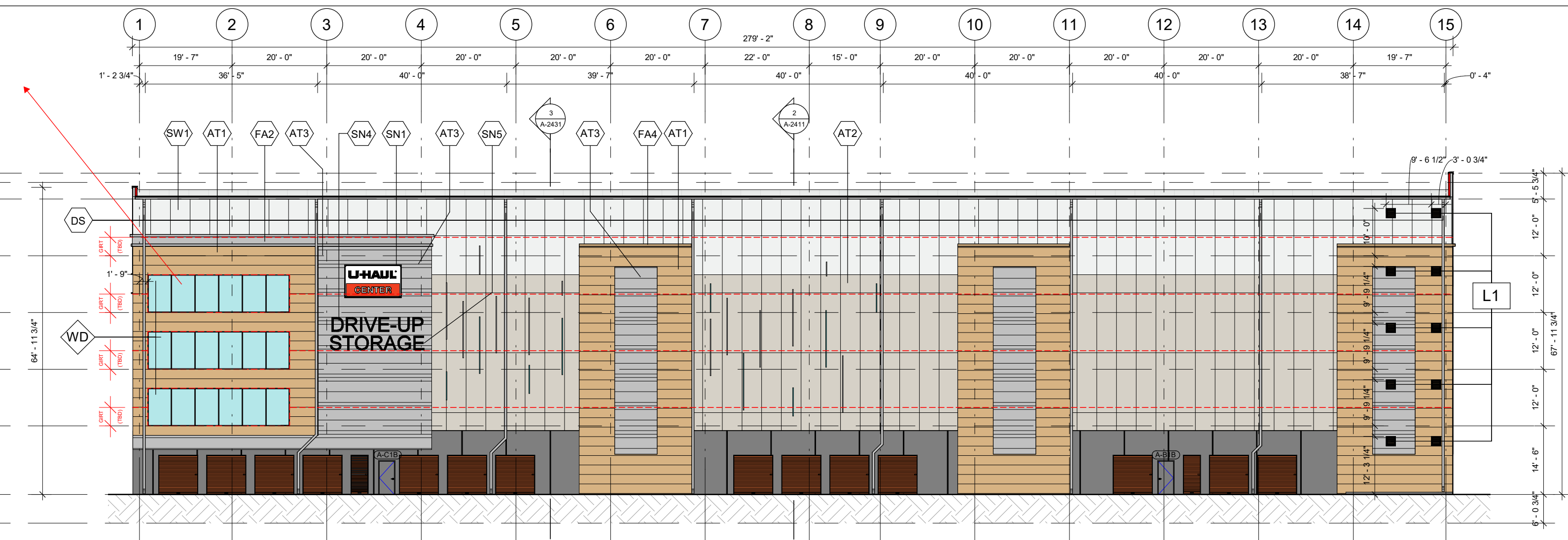
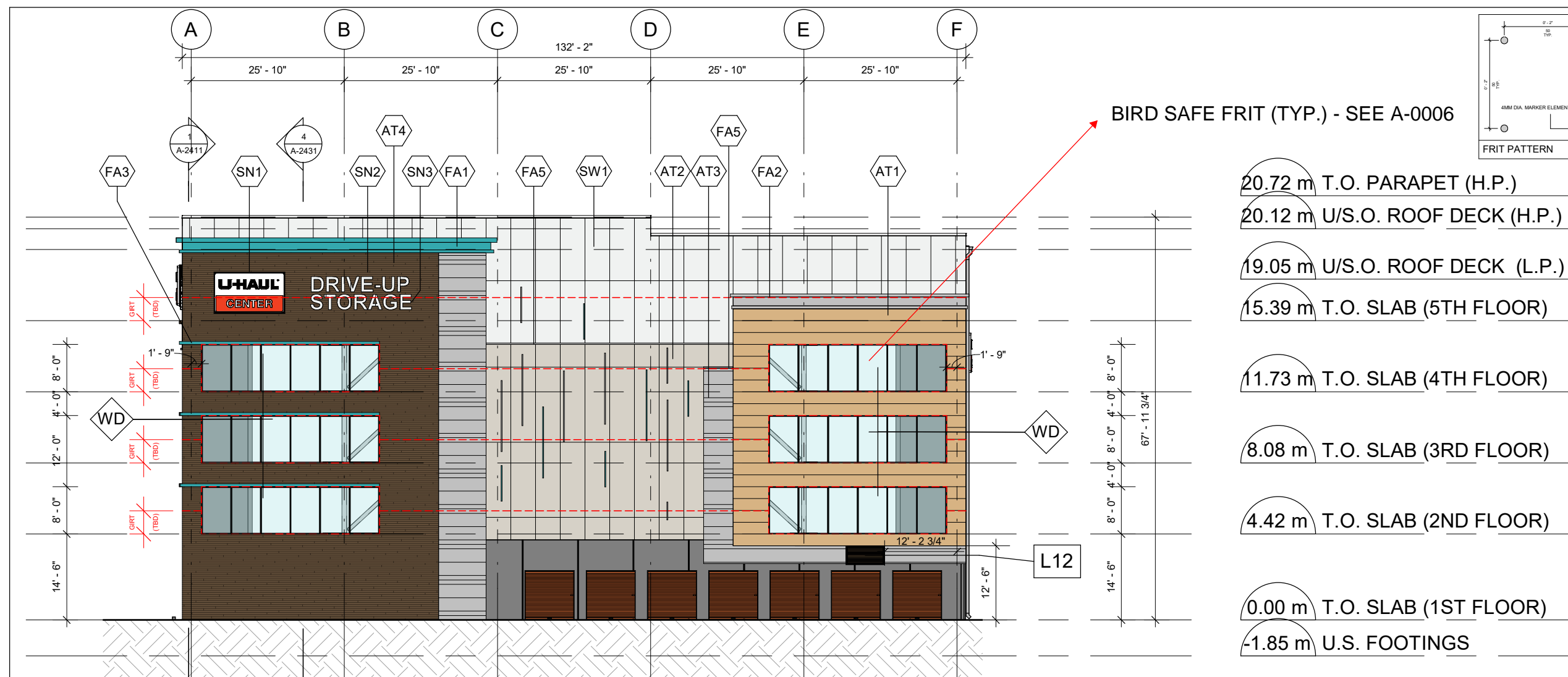
PROJECT U-HAUL MOVING & STORAGE OF OTTAWA 30 FRANK NIGHBOR PLACE, OTTAWA, ON U-Haul Entry 942072

PROJECT NO: 138165 DRAWN BY: A. Chu CHECKED BY: Y. Bilbetsi

SHEET TITLE BLDG A - BUILDING ASSEMBLIES SHEET NUMBER A-0006 ISSUE 9

File Number: D07-07-22-0005 & D07-12-22-0088 City Plan No. 18789

ISSUES	No.	DESCRIPTION	DATE
	1	CONCEPT DESIGN	2022-04-29
	2	ISSUED FOR SITE PLAN CONTROL APPLICATION	2022-05-18
	3	DESIGN DEVELOPMENT	2022-06-03
	4	ISSUED FOR PERMIT	2022-07-19
	5	RESPONSE TO SPC COMMENTS	2022-08-26
	6	ISSUE FOR TENDER	2022-12-15



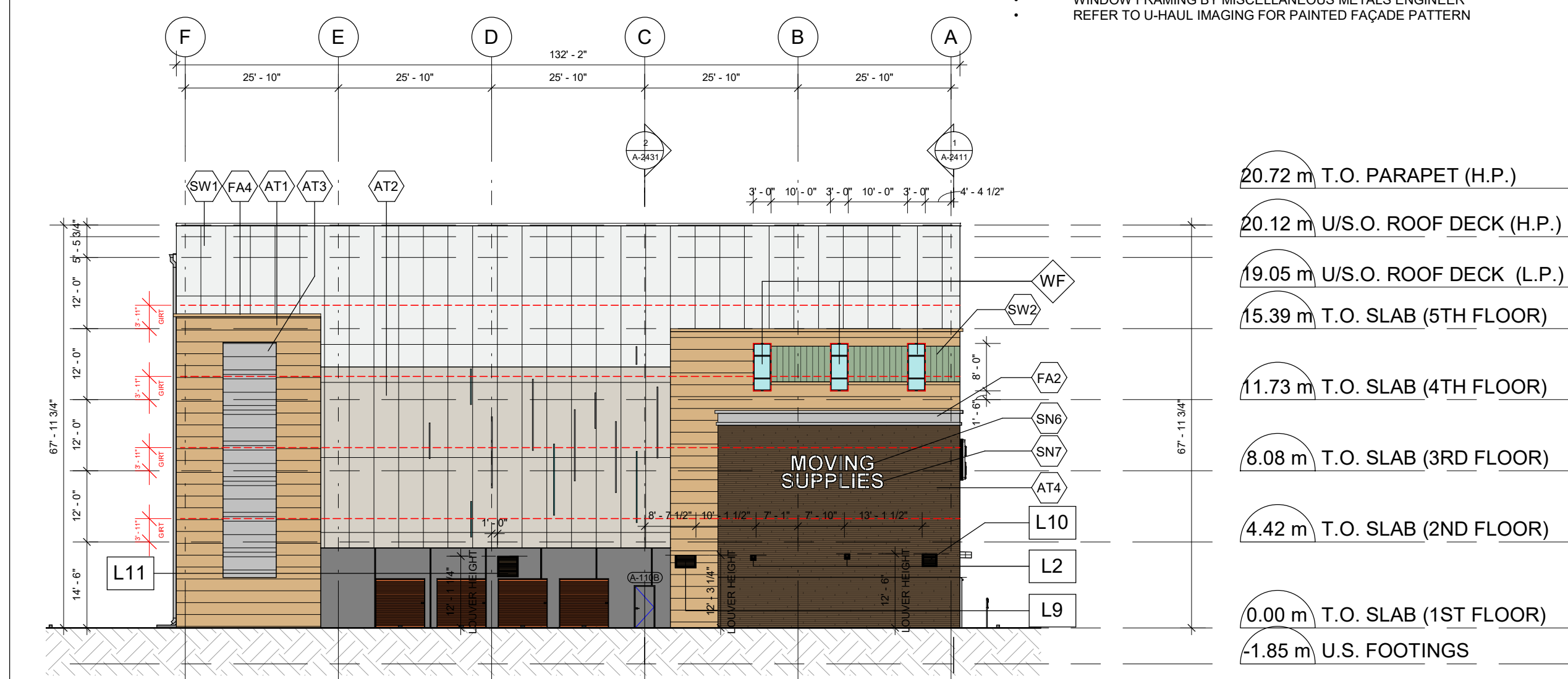
**1 BLDG A - ELEVATION - NORTH**

1" = 20'-0"

BLDG A NOTES:  
• GIRTS DRAWN ARE REFERENCE / INDICATIVE ONLY. IMP SUPPLIER TO PROVIDE SHOP DRAWINGS FOR REVIEW.  
• SUPPORTING OF INSULATED METAL PANELS PROVIDED BY THIRD PARTY WINDOW FRAMING BY MISCELLANEOUS METALS ENGINEER  
• REFER TO U-HAUL IMAGING FOR PAINTED FAÇADE PATTERN

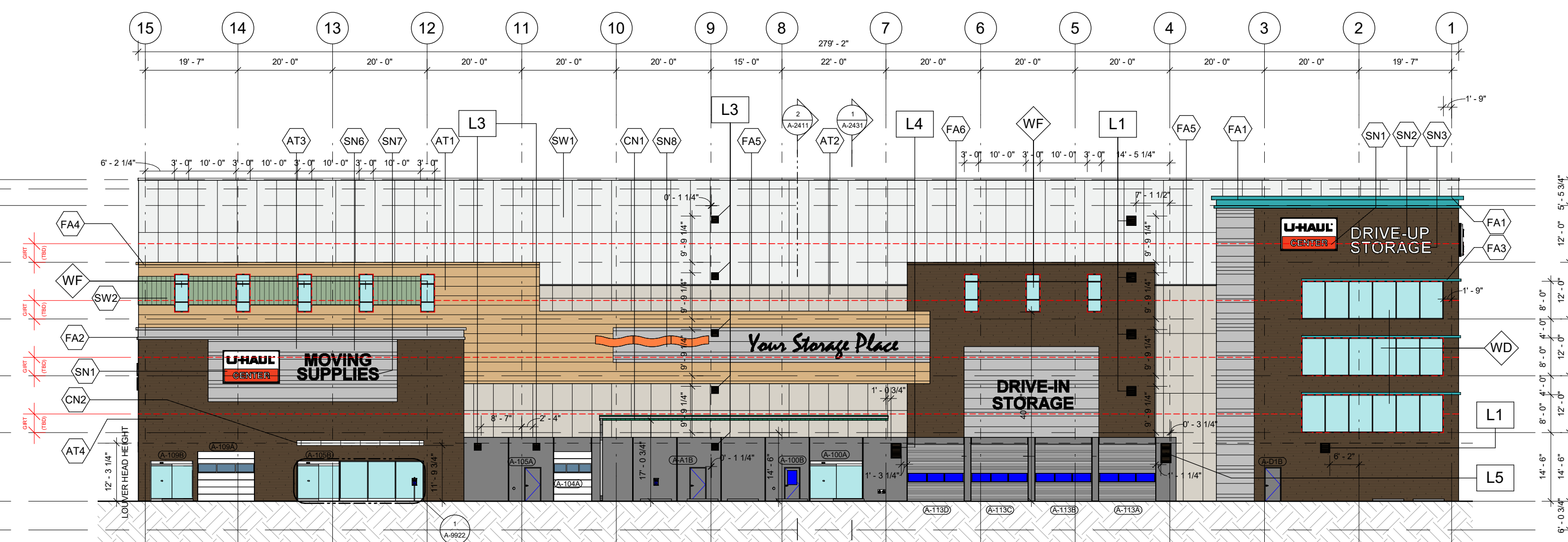
**2 BLDG A - ELEVATION - WEST**

1" = 20'-0"



**3 BLDG A - ELEVATION - SOUTH**

1" = 20'-0"



**4 BLDG A - ELEVATION - EAST**

1" = 20'-0"

MARK	FINISH	COLOUR	DESCRIPTION
DS			DOWNSPOUT TO AVOID WINDOWS AND SIGNAGE
FA1			
FA2			
FA3			
FA4			
FA5			
SN1			LIT CABINET SIGN 12"W X 7'H 84 SQFT
SN2			PLASTIC FORMED CHANNEL LETTERS 15.2"W X 2.5'H 38 SQFT
SN3			PLASTIC FORMED CHANNEL LETTERS 16.77"W X 2.5'H 41.92 SQFT
SN4			PLASTIC FORMED CHANNEL LETTERS 18.24"W X 3'H 54.72 SQFT
SN5			PLASTIC FORMED CHANNEL LETTERS 20.13"W X 3'H 60.39 SQFT
SN6			PLASTIC FORMED CHANNEL LETTERS 13.95"W X 2.5'H 34.87 SQFT
SN7			PLASTIC FORMED CHANNEL LETTERS 17.03"W X 2.5'H 42.57 SQFT
SN8			PLASTIC FORMED CHANNEL LETTERS 34.29"W X 2.5'H 171.45 SQFT
SN9			LIT CABINET SIGN (REFER TO U-HAUL IMAGING)
AT1	PREFINISHED	ATAS "SIERRA TAN"	

MARK	FINISH	COLOUR	DESCRIPTION
AT2	PREFINISHED	ATAS "SANDSTONE"	
AT3	PREFINISHED	ATAS "SILVERSMITH"	
AT4	PREFINISHED	ATAS WOODLAND SERIES "WALNUT"	
CN1	PREFINISHED	SW 6748 "GREENS" (OR EQUIVALENT)	CANOPY - ARCHITECTURAL AWNING DETAIL
CN2	PREFINISHED		CANOPY - PROMINENT ENTRY FEATURE
SW1	PREFINISHED	SW 7070 "SITE WHITE"	
SW2	PREFINISHED	SW 6451 "NURTURE GREEN"	
W1	LIGHT BROOM FINISH	LIGHT GRAY	TILT-UP EXPOSED AGGREGATE CONCRETE
WD			DISPLAY WINDOW w/ BIRD SAFE FRIT - SEE A-0006
WF			FALSE WINDOW w/ BIRD SAFE FRIT - SEE A-0006
L1			LOUVER 18"W X 18"H
L2			LOUVER 5"W X 5"H
L3			LOUVER 12"W X 12"H
L4			LOUVER 20"W X 36"H
L5			LOUVER 20"W X 52"H
L6			LOUVER 32"W X 32"H
L7			LOUVER 4"W X 4"H
L8			LOUVER 60"W X 40"H
L9			LOUVER 36"W X 20"H
L10			LOUVER 24"W X 20"H
L11			LOUVER 40"W X 40"H
L12			LOUVER 72"W X 32"H

**KINGSPAN OR EQUIVALENT**  
LAP SIDING EMBOSSED HORIZONTAL WALNUT

**KINGSPAN PANELING WITH WOOD GRAIN FINISH**, PROVIDES ARTICULATION AND WARMTH TO THE BUILDING

**BEST PANEL COMPANY OR EQUIVALENT**  
REVOLUTION SERIES TUMBLER REGAL OAK

**BEST PANEL COMPANY** REVOLUTION TUMBLER BRICK PROVIDES DEPTH AND TEXTURE

**ATAS RIGID WALL II OR EQUIVALENT**

Rigid Wall II profiles are available in widths of 8", 12", or 16". The panels are 1/2" deep and provide drainage channels from the 1/2" wide ribs. The panels utilize the "Wood-Lok" concealed fastening system and offer uninterrupted vertical or horizontal sight lines.

**KINGSPAN ARCHITECTURAL PANELING** PROVIDES ARTICULATION, DEPTH AND TEXTURE TO THE BUILDING

**VERSA-SEAM OR EQUIVALENT**

Versa-Seam is a rainscreen style system that requires a water and air barrier system behind it. The panel forms architectural shadow lines in its horizontal installation and is available with three optional reveal or shadow line configurations and optional end folds.

**STUCCO EMBOSSED IMP**, PROVIDES SUPERIOR R22.45 INSULATION, LEED ENERGY COMPLIANT

**FALSE WINDOW DISPLAY (FOR REFERENCE ONLY) (TBD)**

NOTES:  
1. BRACEFRAMES IN THE WINDOWS TO BE PAINTED WHITE  
2. CHANGE IN MATERIALS TO PROVIDE VISUAL SEPARATION TO THE FAÇADE  
3. GENEROUS USE OF GLASS - GLAZING TO BE FRITTED  
4. ARCHITECTURAL FENESTRATION TO ENHANCE RETAIL UNIFORMITY IN THE AREA  
5. ARTISTIC USE OF MATERIALS  
6. PROJECTION CREATES ARCHITECTURAL INTEREST ABOVE CUSTOMER STORAGE AREA AND PROVIDES PROTECTION FROM THE ELEMENTS  
7. VERTICAL AND HORIZONTAL MODULATION IN THE BUILDING ARCHITECTURAL ARTICULATION CREATES WALL PROTECTION AND VISUAL INTEREST  
8. ARCHITECTURAL MODULATION CONVEYING A MORE RETAIL APPEARANCE  
9. GLASS COLOR FOR FAUX WINDOWS (DISPLAY GLASS) TO MATCH THE LOOK AND COLOR OF TRUE WINDOWS  
10. GROUND LEVEL EXT. WALL SHALL BE PRECAST. REFER TO A-0002.  
11. EXT. WALL ASSEMBLY VENEER TO BE INSTALLED ON SITE  
12. PRECAST TBD BY SUPPLIER

SEAL  
**APPROVED**  
By Allison Hamlin at 5:10 pm, Jan 25, 2023

*Allison Hamlin*  
ALLISON HAMLIN  
MANAGER (A), DEVELOPMENT REVIEW WEST  
PLANNING, REAL ESTATE & ECONOMIC DEVELOPMENT  
DEPARTMENT, CITY OF OTTAWA

PRIME CONSULTANT  
**IBI GROUP**  
400-333 Preston Street,  
Ottawa ON, K1S 5N4, Canada  
Tel: 613 225 1311 Fax: 613 225 9868  
ibigroup.com

PROJECT  
**U-HAUL MOVING & STORAGE OF OTTAWA**  
30 FRANK NIGHBOR PLACE, OTTAWA, ON  
U-Haul Entity 942072

PROJECT NO:  
138165  
DRAWN BY:  
**A. Chu**  
PROJECT MGR:  
**Y. Bilbetsi**  
SHEET TITLE  
**BLDG A - ELEVATIONS**

CHECKED BY:  
**Y. Bilbetsi**  
APPROVED BY:  
**H. Semple**  
SHEET NUMBER  
**A-2301**  
ISSUE  
**6**

Door Schedule - Building A - Level 4														
DOOR #	DOOR						FRAME							COMMENT
	DOOR TYPE	NOMINAL WIDTH	NOMINAL HEIGHT	DOOR MATERIAL	HANDING	FINISH AND COLOUR	GLASS	FIRE RATING	MATERIAL	FINISH AND COLOUR	FIRE RATING	HARD WARE		
A-401A	7A	3' - 4"	7' - 0"	AL	LH	FACTORY PRIMED - U-HAUL ORANGE HIGH GLOSS		45 MIN.	AL	ALUMINUM BOTTOM BAR		E		
A-402A	5	3' - 2"	7' - 0"	HM	LH	FACTORY PRIMED - FIELD PAINT U-HAUL EGGSHELL BLACK (P-K)			HM	FACTORY PRIMED FIELD PAINT U-HAUL EGGSHELL BLACK (P-K)		D	TILE EDGE THRESHOLD, AUTO OPEN PUSH BUTTONS, BARRIER FREE COMPLIANT I.D. SIGN "RESTROOM"	
A-403A	7A	3' - 4"	7' - 0"	AL	ROLL-UP DOOR	FACTORY PRIMED - U-HAUL ORANGE HIGH GLOSS		45 MIN.	AL	ALUMINUM BOTTOM BAR		E		
A-404A	7B	8' - 0"	7' - 0"	AL	ROLL-UP DOOR	FACTORY PRIMED - U-HAUL ORANGE HIGH GLOSS		45 MIN.	AL	ALUMINUM BOTTOM BAR		E		
A-A4A	5	3' - 2"	7' - 0"	HM	LH	FACTORY PRIMED - FIELD PAINT U-HAUL EGGSHELL BLACK (P-K)		90 MIN.	HM	FACTORY PRIMED FIELD PAINT U-HAUL EGGSHELL BLACK (P-K)		K		
A-B4A	5	3' - 2"	7' - 0"	HM	LH	FACTORY PRIMED - FIELD PAINT U-HAUL EGGSHELL BLACK (P-K)		90 MIN.	HM	FACTORY PRIMED FIELD PAINT U-HAUL EGGSHELL BLACK (P-K)		K		
A-C4A	5	3' - 2"	7' - 0"	HM	LH	FACTORY PRIMED - FIELD PAINT U-HAUL EGGSHELL BLACK (P-K)		90 MIN.	HM	FACTORY PRIMED FIELD PAINT U-HAUL EGGSHELL BLACK (P-K)		K		
A-D4A	5	3' - 2"	7' - 0"	HM	LH	FACTORY PRIMED - FIELD PAINT U-HAUL EGGSHELL BLACK (P-K)		90 MIN.	HM	FACTORY PRIMED FIELD PAINT U-HAUL EGGSHELL BLACK (P-K)		K		

Door Schedule - Building A - Level 5														
DOOR #	DOOR						FRAME							COMMENT
	DOOR TYPE	NOMINAL WIDTH	NOMINAL HEIGHT	DOOR MATERIAL	HANDING	FINISH AND COLOUR	GLASS	FIRE RATING	MATERIAL	FINISH AND COLOUR	FIRE RATING	HARD WARE		
A-501A	7A	3' - 4"	7' - 0"	AL	LH	FACTORY PRIMED - U-HAUL ORANGE HIGH GLOSS		45 MIN.	AL	ALUMINUM BOTTOM BAR		E		
A-502A	7A	3' - 4"	7' - 0"	AL	ROLL-UP DOOR	FACTORY PRIMED - U-HAUL ORANGE HIGH GLOSS		45 MIN.	AL	ALUMINUM BOTTOM BAR		E		
A-503A	7B	8' - 0"	7' - 0"	AL	ROLL-UP DOOR	FACTORY PRIMED - U-HAUL ORANGE HIGH GLOSS		45 MIN.	AL	ALUMINUM BOTTOM BAR		E		
A-A5A	5	3' - 2"	7' - 0"	HM	LH	FACTORY PRIMED - FIELD PAINT U-HAUL EGGSHELL BLACK (P-K)		90 MIN.	HM	FACTORY PRIMED FIELD PAINT U-HAUL EGGSHELL BLACK (P-K)		K		
A-B5A	5	3' - 2"	7' - 0"	HM	LH	FACTORY PRIMED - FIELD PAINT U-HAUL EGGSHELL BLACK (P-K)		90 MIN.	HM	FACTORY PRIMED FIELD PAINT U-HAUL EGGSHELL BLACK (P-K)		K		
A-C5A	5	3' - 2"	7' - 0"	HM	LH	FACTORY PRIMED - FIELD PAINT U-HAUL EGGSHELL BLACK (P-K)		90 MIN.	HM	FACTORY PRIMED FIELD PAINT U-HAUL EGGSHELL BLACK (P-K)		K		
A-D5A	5	3' - 2"	7' - 0"	HM	LH	FACTORY PRIMED - FIELD PAINT U-HAUL EGGSHELL BLACK (P-K)		90 MIN.	HM	FACTORY PRIMED FIELD PAINT U-HAUL EGGSHELL BLACK (P-K)		K		

CLIENT  
**U-Haul CO. (Canada) LTD.**

**COPYRIGHT**  
This drawing has been prepared solely for the intended use. No reproduction or distribution for any purpose other than authorized by IBI Group is forbidden. Written dimensions shall have precedence over scaled dimensions. Contractors shall verify and be responsible for all dimensions and conditions on the job, and IBI Group shall be informed of any variations from the dimensions and conditions shown on the drawing. Shop drawings shall be submitted to IBI Group for general concurrence before proceeding with fabrication.

**IBI Group Architects (Canada) Inc.**  
is a member of the IBI Group of companies

ISSUES		
No.	DESCRIPTION	DATE
1	ISSUED FOR PERMIT	2022-07-19
2	RESPONSE TO PERMIT COMMENTS - BLDG A	2022-09-27
3	2ND RESUBMISSION - EIS / LANDSCAPE	2022-10-17
4	3RD RESUBMISSION - EIS / LANDSCAPE	2022-11-16
5	ISSUE FOR TENDER	2022-12-15

**CONSULTANTS**  
**ARCHITECTURE / PROJECT MANAGEMENT / TRANSPORTATION:**  
**IBI GROUP - OTTAWA**  
333 PRESTON STREET UNIT 400, OTTAWA, ON K1S 5N4

**CIVIL / LANDSCAPE / PLANNING: NOVATECH**  
240 MICHAEL COWPLAND DRIVE SUITE 101, KANATA, ON K2M 1P6

**GOODKEY, WEEDMARK & ASSOCIATES LIMITED CONSULTING ENGINEERS**  
1188 WOODWARD DRIVE, OTTAWA, ON K2C 3R8

**CLELAND JARDINE ENGINEERING LTD**  
200-580 TERRY FOX, KANATA, ON, K2L 4B9

**STATE OF THE ART ACOUSTIC INC.**  
43-1010 POLYTEK STREET, OTTAWA, ON K1J 9J3

**J.D. BARNES LTD**  
103-62 STEACIE DRIVE, OTTAWA, ON K2K 2A9

**SENEZ CONSULTING LTD.**  
288 EVANS AVE. UNIT 2019, TORONTO, ON, M8Z 1J7

**APPROVED**  
By Allison Hamlin at 5:10 pm, Jan 25, 2023

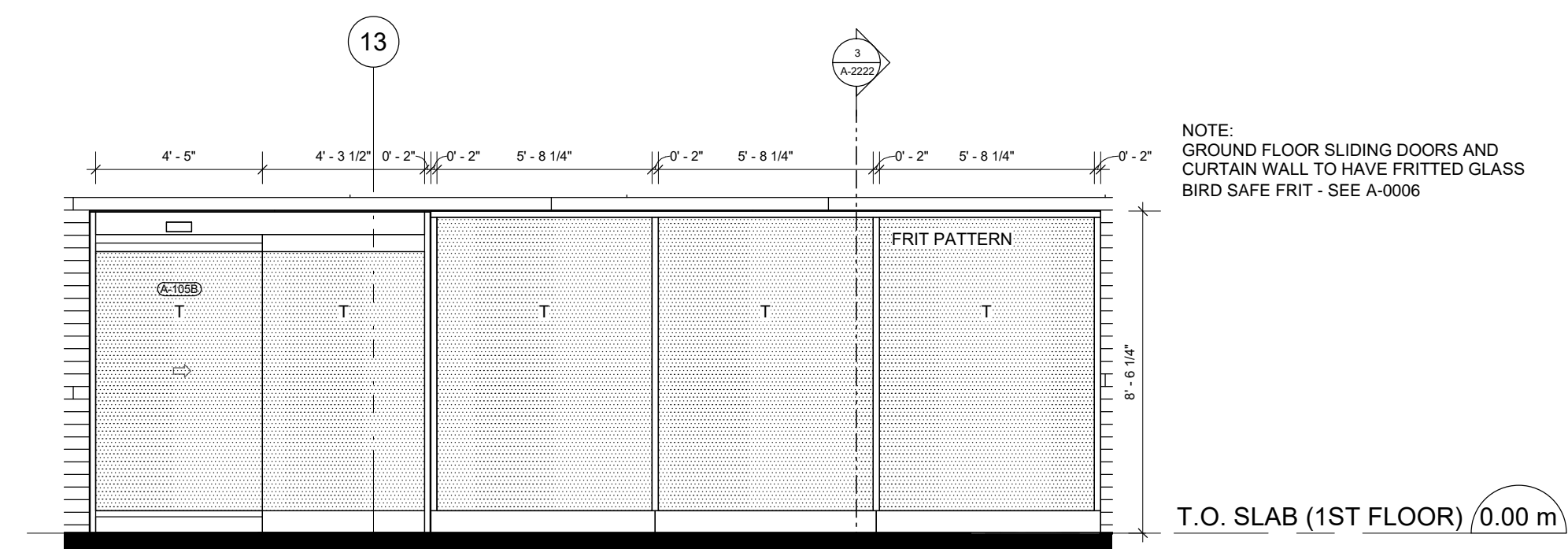
**PRIME CONSULTANT**  
**IBI GROUP**  
400-333 Preston Street,  
Ottawa ON, K1S 5N4, Canada  
Tel: 613 225 1311 Fax: 613 225 9868  
ibigroup.com

**PROJECT**  
**U-HAUL MOVING & STORAGE OF OTTAWA**  
30 FRANK NIGHTBOR PLACE, OTTAWA, ON  
U-Haul Entity 942072

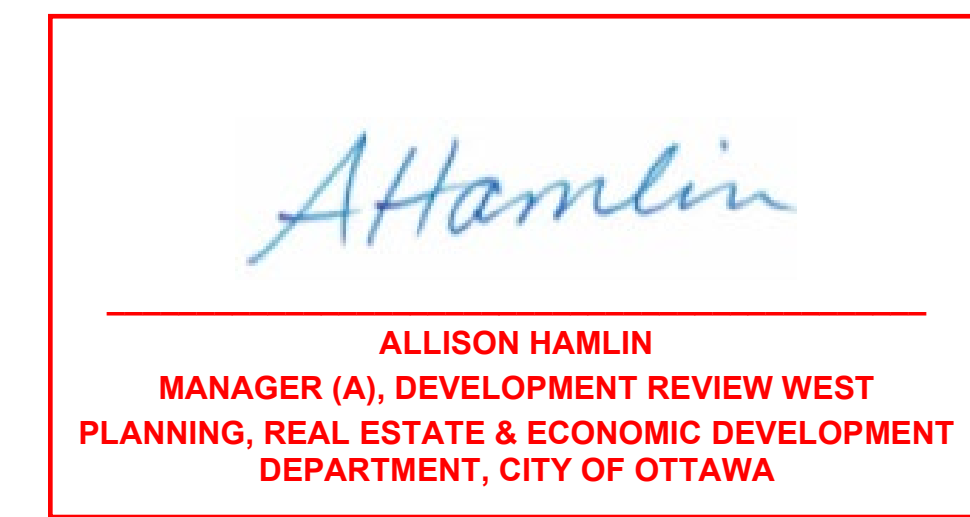
**PROJECT NO:** 138165  
**DRAWN BY:** A. Chu  
**PROJECT MGR:** Y. Bilbetsi  
**CHECKED BY:** Y. Bilbetsi  
**APPROVED BY:** H. Semple

**SHEET TITLE**  
**BLDG A - DOOR SCHEDULE - 2 OF 2**

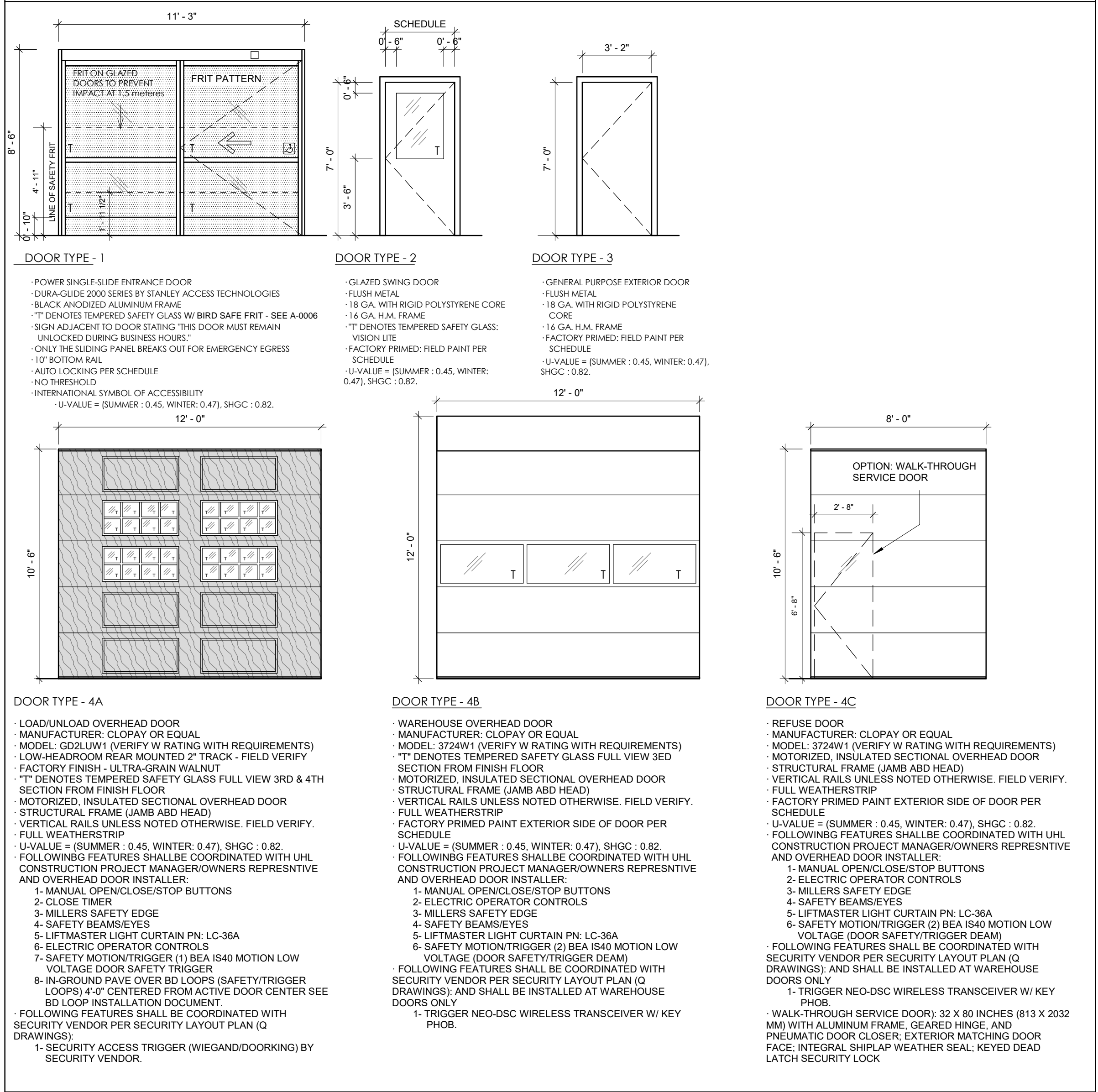
**SHEET NUMBER** **A-9922** **ISSUE** **5**



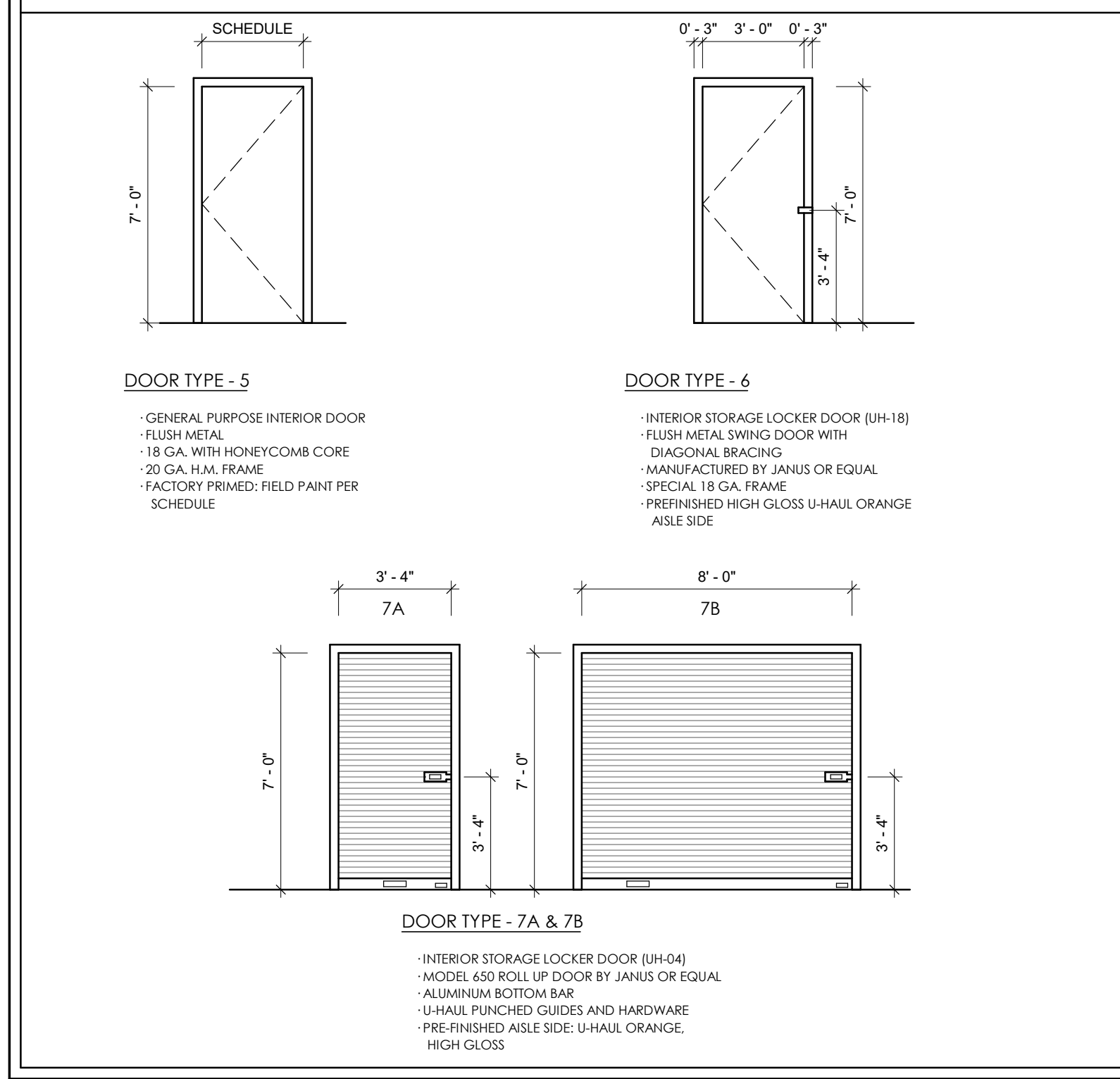
**1 BLDG A - EXT. SLIDING DOOR AND CURTAIN WALL**  
1/4" = 1'-0"



**EXTERIOR DOOR TYPES - BLDG A**

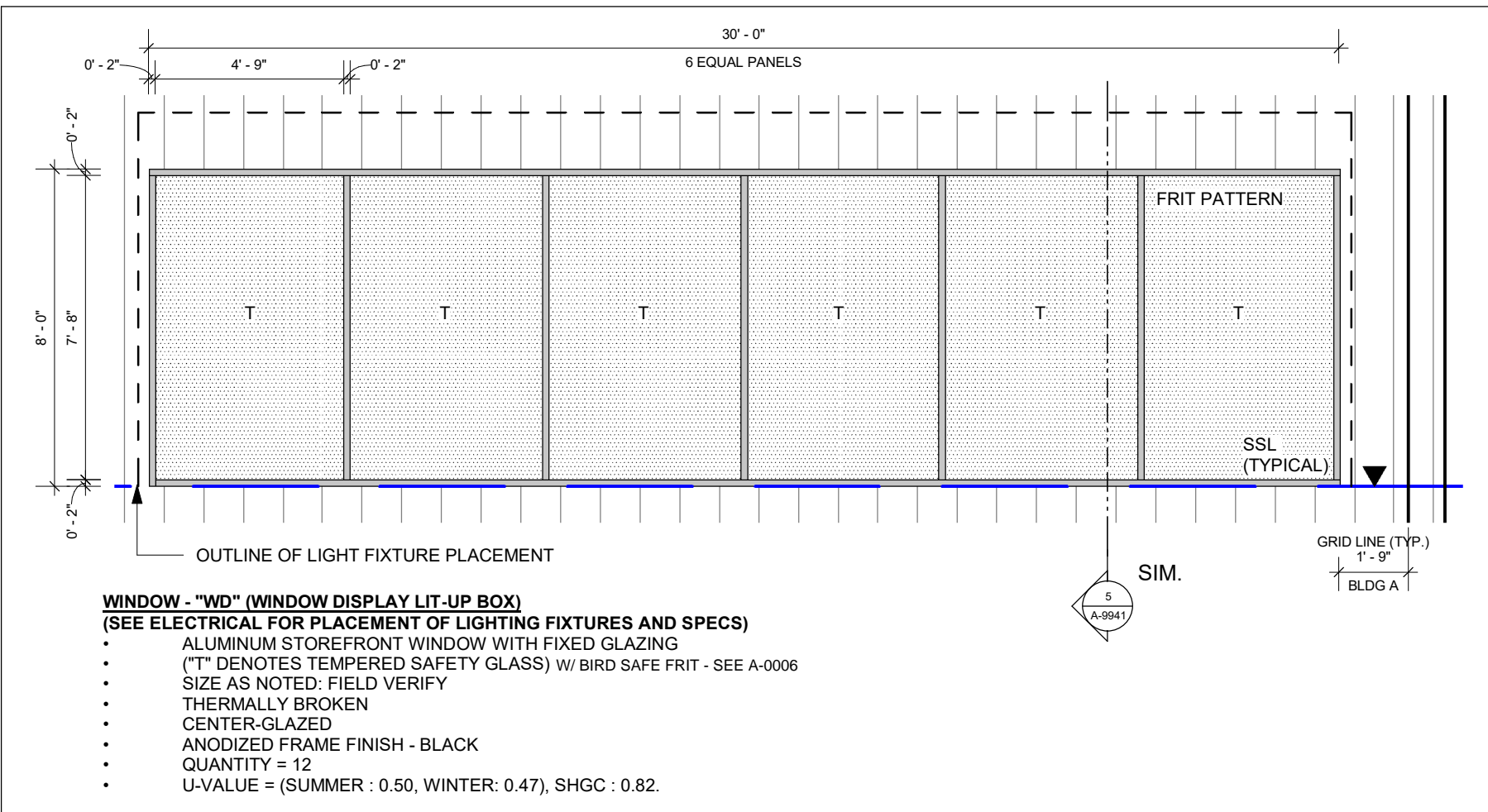


**INTERIOR DOOR TYPES - BLDG A**



- DOOR AND FRAME NOTES**
- ALL PASSAGE DOOR DOORWAYS SHALL HAVE A 32" (815mm) MIN. CLEAR OPENING WIDTH. CLEAR OPENINGS OF DOORWAYS WITH SWING DOORS ARE MEASURED FROM THE FACE OF THE DOOR TO THE STOP WHEN THE DOOR IS OPENED 90°. THERE SHALL BE NO PROJECTIONS IN TO THE REQUIRED CLEAR WIDTH LOWER THAN 34" (865mm) ABOVE FINISHED FLOOR. PROJECTIONS INTO THE CLEAR WIDTH BETWEEN 34" (865mm) AND 80" (2030mm) SHALL NOT EXCEED 4" (100mm).
  - ALL THRESHOLDS TO BE BRUSHED ALUMINUM AND A MAXIMUM OF 1/2" (12mm) IN HEIGHT.
  - ALL DOOR HANDLES SHALL BE LEVER TYPE, MOUNTED BETWEEN 34" (865mm) AND 48" (1220mm) MEASURED FROM FINISHED FLOOR TO CENTERLINE OF LEVER.
  - ALL EXTERIOR MAN DOORS TO HAVE ACCESSIBLE THRESHOLDS.
  - REFER TO DOOR SCHEDULE AND/OR SPECIFICATIONS FOR DOOR SPECS AND FINISH.
  - EXTERIOR HOLLOW METAL DOORS TO HAVE A FIELD PAINTED ENAMEL FINISH.
  - ALL GLAZING IN DOORS TO BE LAMINATED SAFETY GLASS.
  - ALL EXTERIOR DOORS TO BE WEATHERSTRIPPED.
  - GLAZING IN STOREFRONT DOORS TO MATCH COLOUR AND TINT OF ADJACENT GLAZING.
  - VERIFY ALL DOOR HARDWARE WITH OWNER PRIOR TO INSTALLATION.
  - ALL FIRE RATED DOORS, INCLUDING DOORS WITH GLAZING, SHALL BEAR APPROVAL AGENCY RATING LABELS.
  - HARDWARE ON FIRE RATED DOORS SHALL BE LISTED FOR THOSE RATINGS.
  - ALL FIRE RATED DOOR ASSEMBLIES SHALL HAVE CLOSERS AND BE SELF LATCHING.
  - PROVIDE PRIVACY LOCKS AT ALL SINGLE OCCUPANT WASHROOMS.
  - PROVIDE 22ga. GALVANIZED BONDERIZED FLASHING AT ALL DOOR HEADS. COLOUR TO MATCH ADJACENT WALL FINISH. VERIFY WITH OWNER.

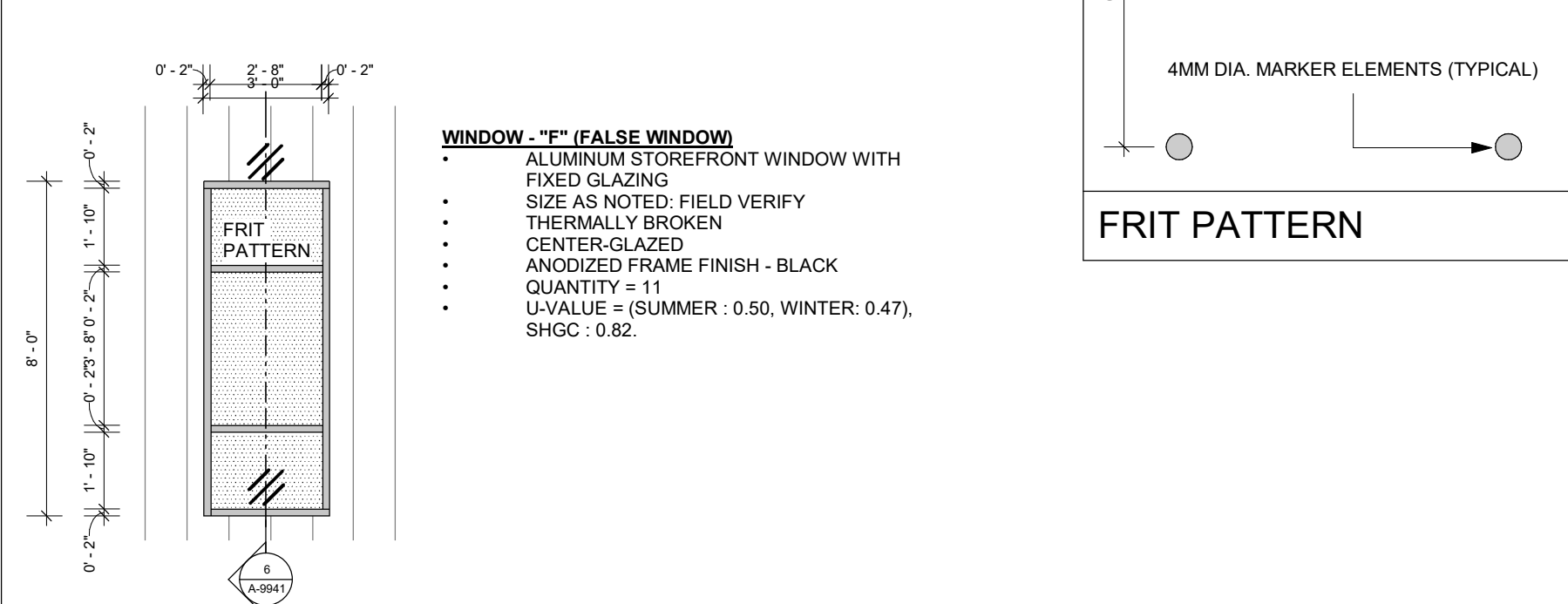
2022-12-06 7:39:47 PM



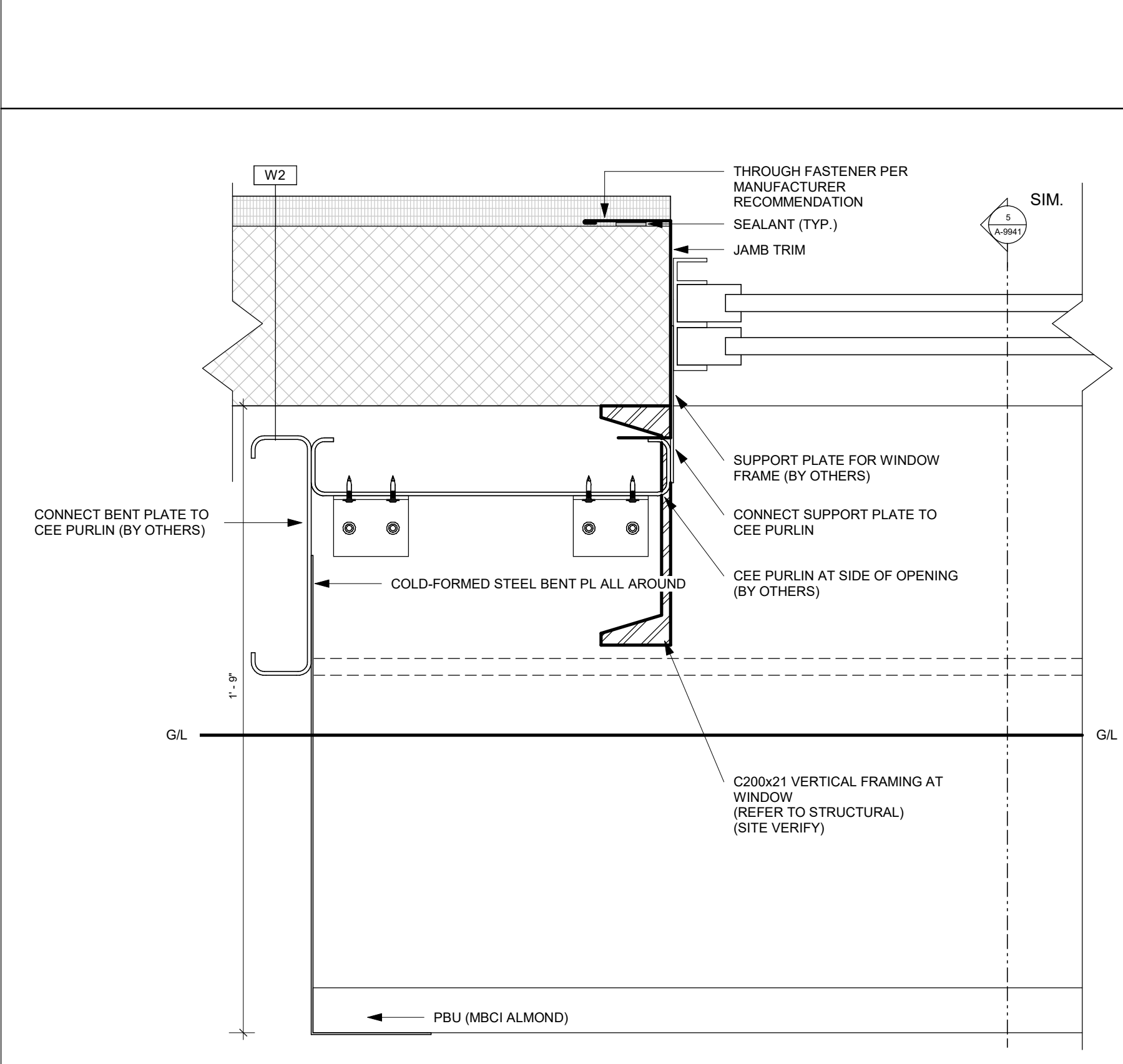
**1** BLDG A - "WD" (DISPLAY LIT-UP) - ELEVATION  
 1/4" = 1'-0"

**NOTE:**

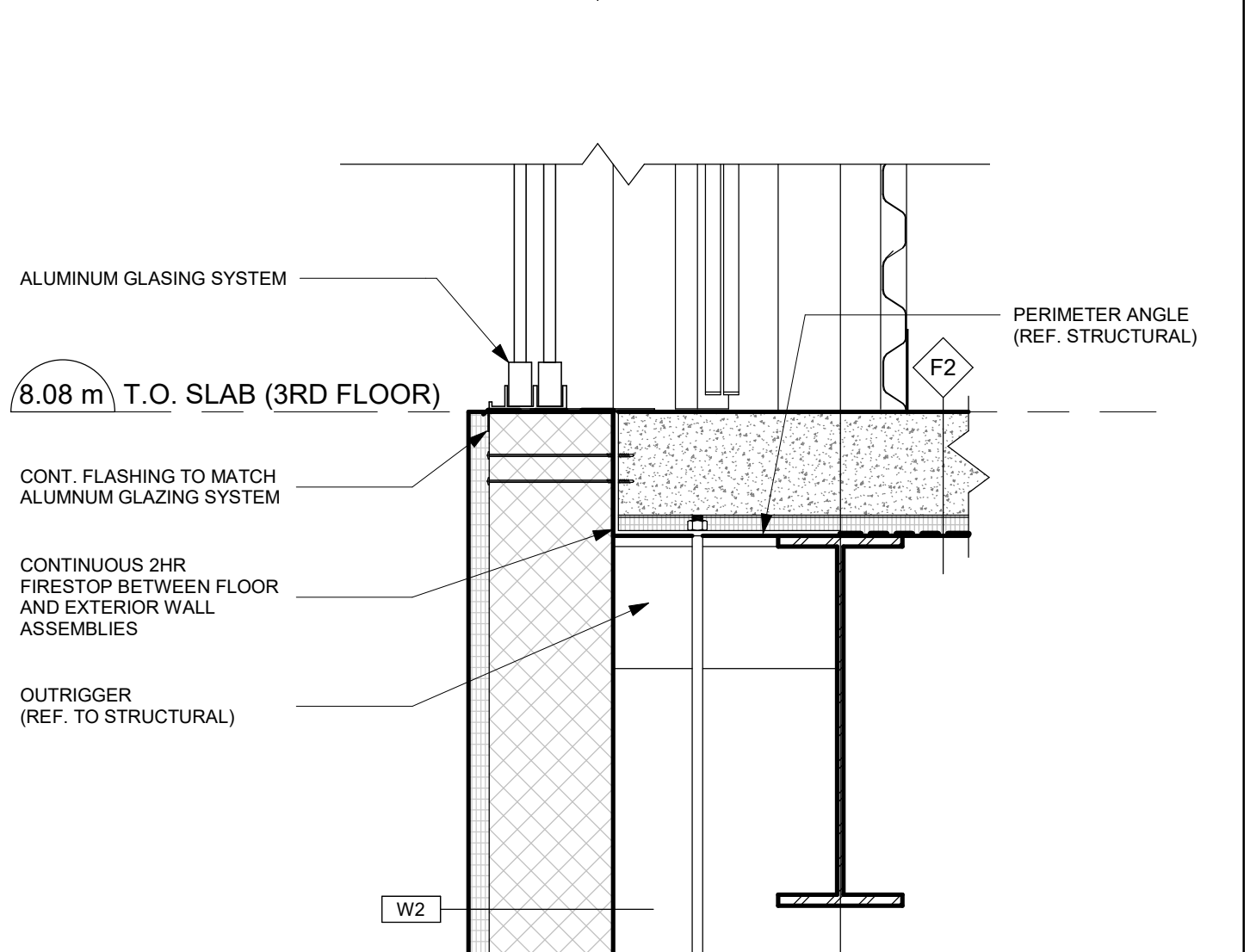
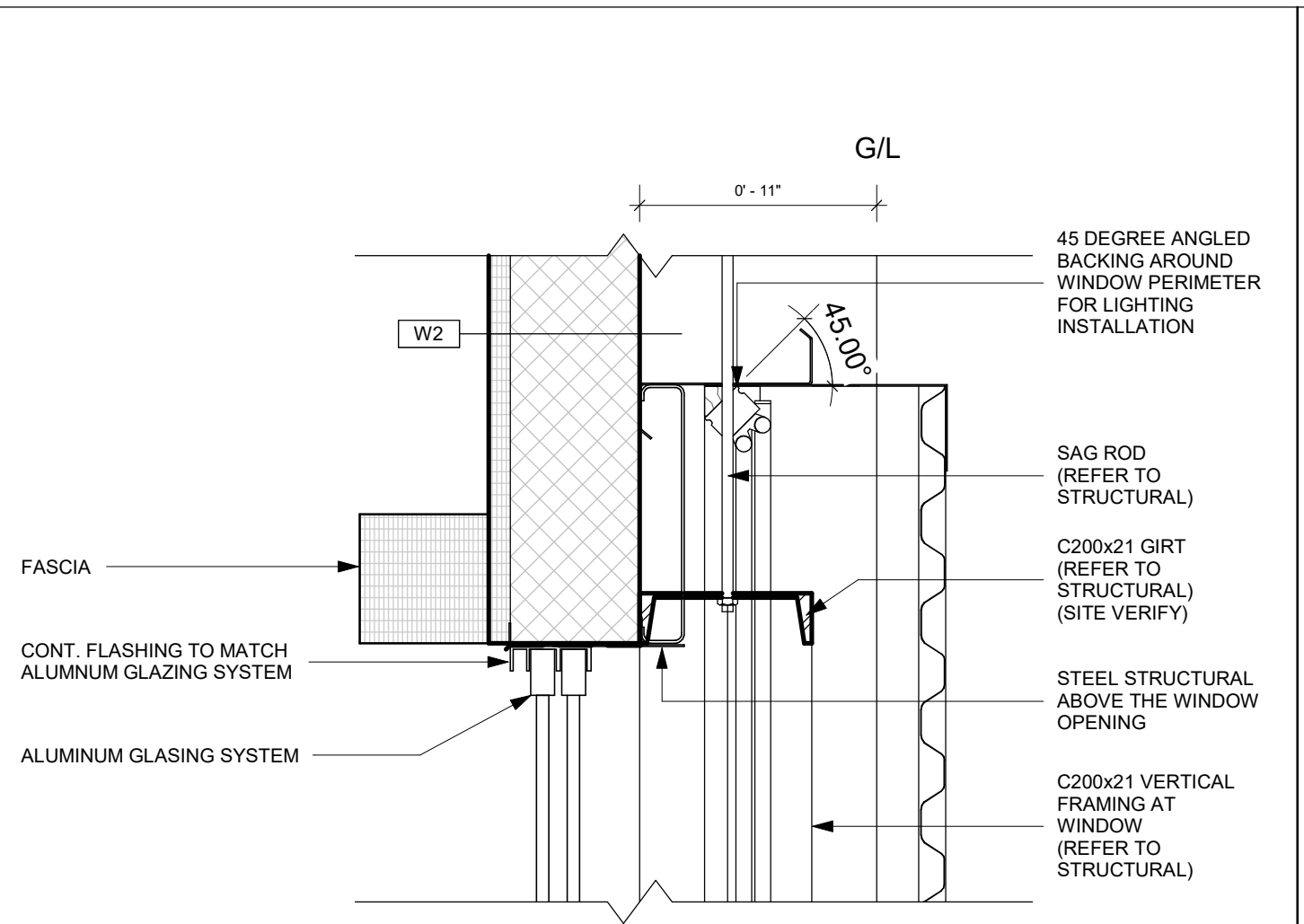
- BLDG A - ALL WINDOWS TO HAVE FRITTED GLASS
- WINDOW FRAMING BY MISCELLANEOUS METALS ENGINEER



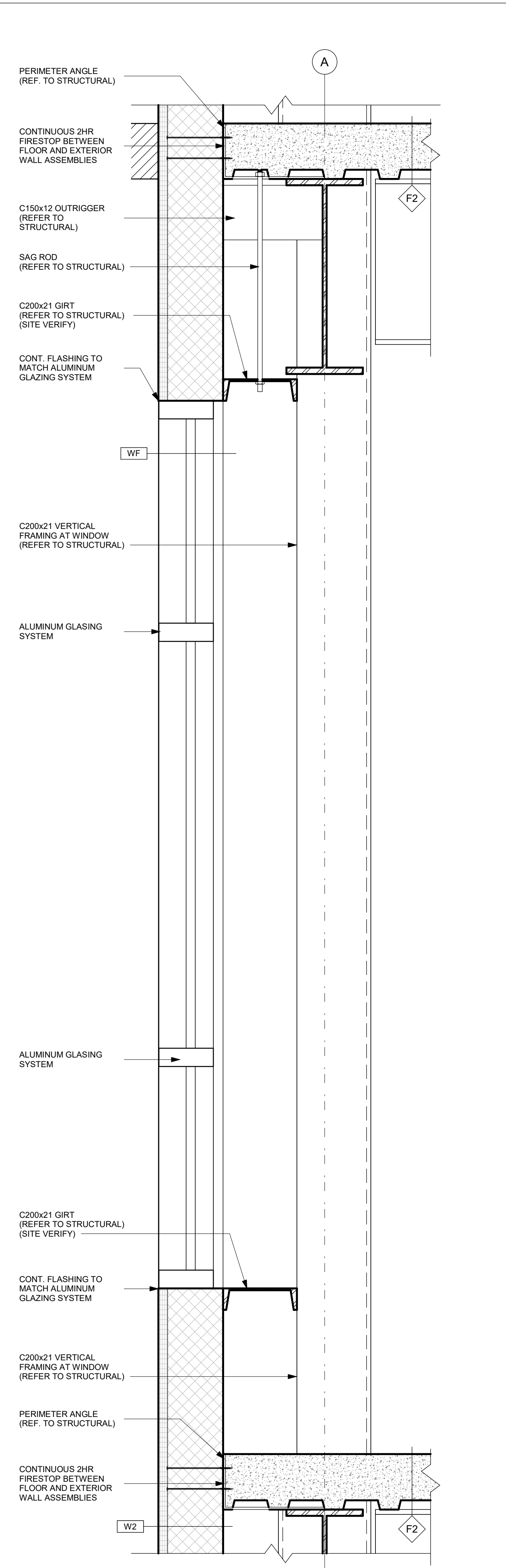
**2** BLDG A - "WF" (FALSE)  
 1/4" = 1'-0"



**4** BLDG A - "WD" (DISPLAY LIT-UP) JAMB DETAIL  
 3" = 1'-0"



**5** BLDG A - "WD" - SECTION  
 1 1/2" = 1'-0"



**6** BLDG A - "WF" - SECTION  
 1 1/2" = 1'-0"

CLIENT  
**U-Haul CO. (Canada) LTD.**

**COPYRIGHT**  
 This drawing has been prepared solely for the intended use. No reproduction or distribution for any purpose other than authorized by IBI Group is forbidden. Written dimensions shall have precedence over scaled dimensions. Contractors shall verify and be responsible for all dimensions and conditions on the job, and IBI Group shall be informed of any variations from the dimensions and conditions shown on the drawing. Shop drawings shall be submitted to IBI Group for general conformance before proceeding with fabrication.

**IBI Group Architects (Canada) Inc.**  
 is a member of the IBI Group of companies

ISSUES		
No.	DESCRIPTION	DATE
1	ISSUED FOR PERMIT	2022-07-19
2	2ND RESUBMISSION - EIS / LANDSCAPE	2022-10-17
3	3RD RESUBMISSION - EIS / LANDSCAPE	2022-11-16
4	ISSUE FOR TENDER	2022-12-15

**CONSULTANTS**

**ARCHITECTURE / PROJECT MANAGEMENT / TRANSPORTATION:**  
**IBI GROUP - OTTAWA**  
 333 PRESTON STREET UNIT 400, OTTAWA, ON K1S 5N4

**CIVIL / LANDSCAPE / PLANNING: NOVATECH**  
 240 MICHAEL COWPLAND DRIVE SUITE 101, KANATA, ON K2M 1P6

**GOODKEY, WEEDMARK & ASSOCIATES LIMITED CONSULTING ENGINEERS**  
 1188 WOODWARD DRIVE, OTTAWA, ON, K2C 3R8

**CLELAND JARDINE ENGINEERING LTD**  
 200-880 TERRY FOX, KANATA, ON, K2L 4B9

**STATE OF THE ART ACOUSTIC INC.**  
 43-1010 POLYTEK STREET, OTTAWA, ON K1J 9J3

**J.D. BARNES LTD**  
 103-62 STEACIE DRIVE, OTTAWA, ON K2K 2A9

**SENEZ CONSULTING LTD.**  
 288 EVANS AVE. UNIT 2019, TORONTO, ON, M8Z 1J7

SEAL

**APPROVED**  
 By Allison Hamlin at 5:10 pm, Jan 25, 2023

*Allison Hamlin*

**ALLISON HAMLIN**  
 MANAGER (A), DEVELOPMENT REVIEW WEST  
 PLANNING, REAL ESTATE & ECONOMIC DEVELOPMENT  
 DEPARTMENT, CITY OF OTTAWA

**PRIME CONSULTANT**

**IBI GROUP**  
 400-333 Preston Street,  
 Ottawa ON, K1S 5N4, Canada  
 Tel: 613 225 1311 Fax: 613 225 9668  
 ibigroup.com

**PROJECT**  
**U-HAUL MOVING & STORAGE OF OTTAWA**  
 30 FRANK NIGHBOR PLACE, OTTAWA, ON  
 U-Haul Entity 942072

**PROJECT NO:**  
 138165

**DRAWN BY:**  
 A. Chu

**CHECKED BY:**  
 Y. Bilbeisi

**PROJECT MGR:**  
 Y. Bilbeisi

**APPROVED BY:**  
 H. Semple

**SHEET TITLE**  
**BLDG A - WINDOW SCHEDULE AND DISPLAY BOX DETAILS**

**SHEET NUMBER**  
**A-9941**

**ISSUE**  
**4**

2022-12-06 7:39:53 PM