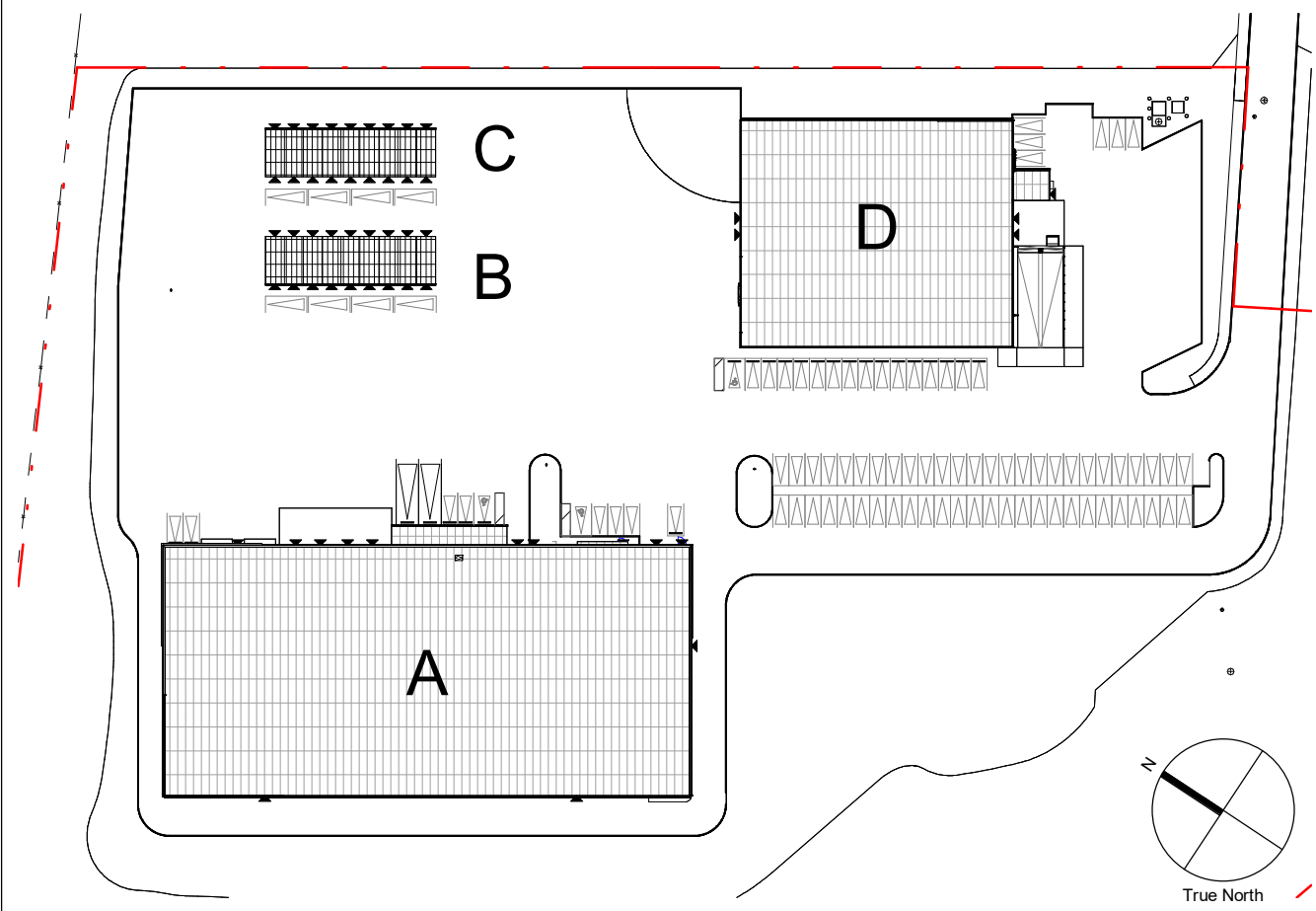




# UHAUL INTERNATIONAL

U-Haul Moving & Storage of Kanata  
30 FRANK NIGHBOR PL  
OTTAWA, ONTARIO, K2V 1B9

## PROJECT NAME



## AREA MAP

**ARCHITECTURE / PROJECT MANAGEMENT / TRANSPORTATION:**  
**IBI GROUP - OTTAWA**  
333 PRESTON STREET UNIT 400,  
OTTAWA, ON K1S 5N4

**CIVIL / LANDSCAPE / PLANNING: NOVATECH**  
240 MICHAEL COWPLAND DRIVE SUITE 101,  
KANATA, ON K2M 1P6

**GOODKEY, WEEDMARK & ASSOCIATES LIMITED CONSULTING ENGINEERS**  
1188 WOODWARD DRIVE, OTTAWA, ON, K2C 3R8

**CLELAND JARDINE ENGINEERING LTD**  
200-580 TERRY FOX, KANATA, ON, K2L 4B9

**STATE OF THE ART ACOUSTIC INC.**  
43-1010 POLYTEK STREET, OTTAWA, ON K1J 9J3

**J.D. BARNES LIMITED**  
103-62 STEACIE DRIVE, OTTAWA, ON K2K 2A9

**SENEZ CONSULTING LTD.**  
208 EVANS AVE. UNIT 2019, TORONTO, ON, M8Z 1J7

**PATERSON GROUP INC. CONSULTING ENGINEERS**  
154 COLONNADE ROAD SOUTH, OTTAWA (NEPEAN), ON, K2E 7J5

## CONSULTANTS

**U-HAUL COMPANY OF CANADA**  
2727 N CENTRAL AVE  
PHOENIX, AZ 85004  
(602) 263-6502

**PERMIT APPLICANT**  
UHC OF NORTHEASTERN ONTARIO  
3636 INNES RD  
OTTAWA, ON, K1C 1T1

**OWNERS REPRESENTATIVE**  
ROY BRADSHAW  
(343) 5720-3202

## PROJECT OWNER

**STANDING SEAM METAL ROOF SYSTEM**  
BUTLER (ROOF & PURLINS)  
CONTACT: MIKE COFFEY  
mcoffey@butlertmfg.com

**STORAGE MATERIAL**  
MBCI (INT. & EXT. METAL STUDS, D&U PANEL)  
CONTACT: CHRIS ROBERTS  
christopher.roberts@meci.com  
JANUS (DOORS, TRIM, & KICK PLATE)  
CONTACT: BETH BRYANT  
bethb@anusintl.com  
DYNAMIC FASTENERS (ALL COLD-FORMED STEEL & SHEATHING FASTENERS)  
CONTACT: JASON RICHARDSON  
JasonRichardson@DynamicFastener.com

**ELECTRICAL**  
GRAYBAR  
CONTACT: BRUCE LEDGERWOOD  
bruce.ledgerwood@graybar.com

**EXTERIOR DOORS**  
CLOPAY (OVERHEAD DOORS)  
CONTACT: CHRIS REMICK  
cremick@clopay.com  
STANLEY (SLIDING DOORS)  
CONTACT: BILL GERARDIN  
william.gerardin@sbdlinc.com

**INSULATED METAL PANELS (IMP) & NON-INSULATED EXTERIOR METAL PANELS**  
ATAS  
CONTACT: MINNIE ROBLES  
mrobles@atas.com  
MBCI  
CONTACT: BRIAN GARRY  
brian.garry@metspan.com

**MECHANICAL**  
TRANE (EQUIPMENT)  
CONTACT: CHAD BARNETT  
chad.barnett2@trane.com  
AIR DISTRIBUTION CONCEPTS (FABRIC DUCT)  
CONTACT: CHRIS PAVLATOS  
cpav@adctubes.com

**GALVANIZED REINFORCING**  
COMMERCIAL METALS COMPANY  
CONTACT: TIM WOLL  
Tim.Woll@cmc.com

**COVERED PARKING CANOPIES**  
BAJA CARPORTS  
CONTACT: JEREMY CECACI  
jeremy@bajacarports.com

**BUILDING CANOPIES (OTHER THAN STORAGE ENTRANCE)**  
SKYSCAPE CANOPIES  
CONTACT: CHASE KING  
chase@skyscapedcanopies.com

**EXTERIOR PRE-FABRICATED STORAGE LOCKERS**  
TRACHTe  
CONTACT: KIRSTEN MENZIES  
kmenzies@trachte.com  
MILLER BUILDINGS  
CONTACT: LOUIS GILMORE  
LouisGilmore@MillerBldgs.com

## NATIONAL ACCOUNTS

BUILDING A - SELF-STORAGE BUILDING  
BUILDING B & C - MASS PORTABLE STORAGE (JANUS)  
BUILDING D - PRE-ENGINEERED STORAGE WAREHOUSE (BUTLER)

## PROJECT DESCRIPTION

- 2012 ONTARIO BUILDING CODE (OBC, O.Reg. 332/12 amended to O.Reg. 867/21).  
- ONTARIO FIRE CODE  
- ACCESSIBILITY FOR ONTARIANS WITH DISABILITIES ACT

## GOVERNING BUILDING CODES

- ALL WORK SHALL COMPLY WITH ALL APPLICABLE CODES AND ORDINANCES.
- CONTRACTOR SHALL BECOME FAMILIAR WITH ALL U-HAUL'S REQUIREMENTS PRIOR TO BIDDING AND SHALL BE RESPONSIBLE FOR COMPLIANCE WITH THOSE REQUIREMENTS.
- FIELD VERIFY ALL DIMENSIONS PRIOR TO CONSTRUCTION. NOTIFY ARCHITECT/AMERCO REPRESENTATIVE OF ANY DISCREPANCIES.
- ITEMS NOT INDICATED IN THESE DOCUMENTS THAT CAN BE LEGITIMATELY AND REASONABLY INFERRED TO COMPLETE THE WORK AT HAND SHALL BE FURNISHED BY THE CONTRACTOR AS THOUGH IT WERE DETAILED HEREIN. CHANGE REQUESTS FOR SAID ITEMS SHALL NOT BE APPROVED.
- DRAWINGS SHALL BE DISTRIBUTED TO SUB-CONTRACTORS IN COMPLETE SETS AS INDICATED BY THE SHEET INDEX. GENERAL CONTRACTOR IS RESPONSIBLE FOR ENSURING SUB-CONTRACTORS BID ON ALL ITEMS ASSOCIATED WITH THEIR RESPECTIVE TRADES.
- THE CONTRACTOR WILL INSPECT THE PREMISES PRIOR TO BIDDING TO VERIFY EXISTING WORKING CONDITIONS; SHOULD CONDITIONS BE IDENTIFIED WHICH ARE BELIEVED TO IMPEDE INTENDED WORK, THEN SUCH CONDITIONS MUST BE DOCUMENTED AND REPORTED IMMEDIATELY TO ARCHITECT/AMERCO REPRESENTATIVE. FAILURE TO ADVISE WILL CONSTITUTE NOTICE THAT CONTRACTOR IS FULLY SATISFIED WITH THE EXISTING CONDITIONS AND INTENDS TO PERFORM PER BID WITH NO ALLOWANCE EITHER IN TIME OR MONEY FOR ANY IMPEDIMENTS TO INTENDED WORK.
- CONTRACTOR SHALL ISSUE WRITTEN NOTIFICATION TO ARCHITECT/AMERCO REPRESENTATIVE OF ANY DISCREPANCIES AND FOLLOW UP IN WRITING WITHIN TWO WORKING DAYS OF INSPECTION.
- CONTRACTOR SHALL VERIFY ALL DIMENSIONS AND CONDITIONS IN THE FIELD. IF DIMENSIONAL ERROR OCCURS OR CONDITION NOT COVERED IN THE DRAWINGS IS ENCOUNTERED, CONTRACTOR SHALL SUBMIT A CLARIFICATION REQUEST TO ARCHITECT/AMERCO REPRESENTATIVE AND OBTAIN RESOLUTION BEFORE COMMENCING THAT PORTION OF THE WORK.
- ALL MANUFACTURED ARTICLES, MATERIALS AND EQUIPMENT SHALL BE APPLIED, INSTALLED, CONNECTED, ERECTED, USED, CLEANED, AND CONDITIONED IN ACCORDANCE WITH THE MANUFACTURERS WRITTEN SPECIFICATIONS OR INSTRUCTIONS UNLESS HEREINAFTER SPECIFIED TO THE CONTRARY.
- THE CONTRACTOR SHALL SUPERVISE AND DIRECT THE WORK, USING HIS BEST SKILL AND ATTENTION. HE SHALL BE SOLELY RESPONSIBLE FOR ALL CONSTRUCTION AND/OR INSTALLATION MEANS, METHODS, TECHNIQUES, SEQUENCES, AND PROCEDURES AND FOR COORDINATING ALL PORTIONS OF THE WORK UNDER THE CONTRACT.
- DIMENSIONS TAKE PRECEDENCE OVER SCALE ON CONSTRUCTION DOCUMENTS.
- ALL WORK SHALL BE EXECUTED IN A NEAT AND WORKMANLIKE MANNER, ACCEPTABLE TO OWNER.
- WHEN WORK NOT SPECIFICALLY CALLED OUT IS REQUIRED TO COMPLETE THE PROJECT, THE WORK SHALL BE PROVIDED IN ACCORDANCE WITH GENERAL NOTES 12, 14 AND 16.
- CONTRACTOR SHALL GUARANTEE, IN WRITING, ALL WORKMANSHIP AND MATERIALS FOR A PERIOD OF ONE YEAR FROM THE DATE OF SUBSTANTIAL COMPLETION.
- UNLESS OTHERWISE SPECIFICALLY NOTED, THE CONTRACTOR SHALL PROVIDE AND PAY FOR ALL LABOR, MATERIALS, EQUIPMENT, TOOLS, CONSTRUCTION EQUIPMENT AND MACHINERY, TRANSPORTATION, AND OTHER FACILITIES AND SERVICES NECESSARY FOR PROPER EXECUTION AND COMPLETION OF THIS PROJECT.
- THE CONTRACTOR WARRANTS TO AMERCO AND ARCHITECT/AMERCO REPRESENTATIVE THAT ALL MATERIALS AND EQUIPMENT FURNISHED UNDER THIS CONTRACT WILL BE NEW UNLESS OTHERWISE SPECIFIED, AND THAT ALL WORK WILL BE GOOD QUALITY FREE FROM DEFECTS AND IN CONFORMANCE WITH THE CONSTRUCTION DOCUMENTS. ALL WORK NOT CONFORMING TO THESE STANDARDS MAY BE CONSIDERED DEFECTIVE. IT IS UNDERSTOOD THAT NO INFERIOR OR NON-CONFORMING WORK OR MATERIALS WILL BE ACCEPTED WHETHER DISCOVERED AT THE TIME THEY ARE INCORPORATED INTO THE WORK OR AT ANY TIME BEFORE OR AFTER THE FINAL ACCEPTANCE. IF REQUIRED BY THE ARCHITECT OR AMERCO REPRESENTATIVE, THE CONTRACTOR SHALL FURNISH SATISFACTORY EVIDENCE AS TO THE KIND AND QUALITY OF MATERIALS AND EQUIPMENT.
- THE WARRANTIES AND GUARANTIES REQUIRED BY THE CONSTRUCTION DOCUMENTS SHALL BE IN ADDITION TO AND NOT IN LIMITATION OF ANY OTHER WARRANTY OR GUARANTY OR REMEDY REQUIRED BY LAW OR BY THE CONSTRUCTION DOCUMENTS.
- MISCELLANEOUS STEEL ITEMS SUCH AS STAIRS, RAILINGS, LADDERS, ETC TO BE DESIGNED AND DETAILED BY THE MISC METALS ENGINEER.
- SLIDING DOORS ARE DESIGNED TO CONFORM WITH THE REQUIREMENTS OF 3.3.1.11.(1), ONLY THE SLIDING PANELS BREAKOUT FOR EMERGENCY EGRESS. ALL SLIDING DOORS ARE DESIGNED TO SWING ON THE VERTICAL AXIS IN DIRECTION OF TRAVEL AND WILL BE PROVIDED SIGNAGE TO INDICATE "IN EMERGENCY, PUSH TO OPEN". SEE DOOR TYPE 1 IN EXTERIOR DOOR TYPES LEGEND, A-9922, AND REFER TO DOOR SPECIFICATIONS FOR SIGNAGE REQUIREMENTS (ANSI/BHMA A156.10.)
- CONTRACTOR TO COORDINATE EXPANDABILITY OF ALL STAND ALONE PRE-ENGINEERED METAL BUILDINGS (PEMB) WITH OWNER REPRESENTATIVE
- ELEVATIONS SHOWN ARE BASED OFF OF THE UHI FACILITY IMAGING AND DIRECTIONAL SIGNAGE IMAGING BOOK (DSD BOOK). PRIOR TO ORDERING AND INSTALLATION OF MATERIAL, COORDINATE WITH THE LATEST DSD BOOK. CONTACT FACILITY IMAGING GROUP, OWNERS REP, AND ARCHITECT IF ANY EXTERIOR MECHANICAL, ELECTRICAL, PLUMBING, OR OTHER CONFLICTS EXIST.
- WASHROOMS ARE AVAILABLE IN BUILDING A TO ACCOUNT FOR THE OCCUPANT LOAD IN BUILDING D, TWO UNIVERSAL WASHROOMS ON THE FIRST FLOOR, AND ONE BARRIER FREE WASHROOM ON THE SECOND AND FOURTH FLOORS.

## OWNER GENERAL NOTES

ACT ACOUSTIC CEILING TILE  
ADD ADDENDUM  
ADJ ADJUSTABLE  
AFF AT FINISHED FLOOR  
ALUM ALUMINIUM  
AN ANODIZED  
ADO AUTO DOOR OPERATOR  
BCT BABY CHANGE TABLE  
BD BOLLARD  
BF BARRIER FREE  
BH BULK HEAD  
BN BULL NOSE  
BOT BOTTOM  
CB CATCH BASIN  
CG CORNER GUARD  
CH COAT HOOK  
HB HOSE BIB  
HDWR HARDWARE

HM HOLLOW METAL  
HY HYDRO POLE  
HORZ HORIZONTAL  
IN INCH  
KP KEY PAD  
LS LIGHT STANDARD  
MAX MAXIMUM  
MH MAN HOLE  
MISC MISCELLANEOUS  
MP MOP HANGER  
NIC NOT IN CONTRACT  
NTS NOT TO SCALE  
CJ CONTROL JOINT  
CL CENTRE LINE  
CT CERAMIC TILE  
CLR CLEAR  
CMU CONCRETE MASONRY UNIT  
REF REFERENCE

COL COLOUR  
CONC CONCRETE  
CR CARD READER  
DIA DIAMETER  
DN DOWN  
DC DEPRESSED CURB  
DS DOWNSPOUT  
DMC DEMOUNTABLE CURB  
DBN DOUBLE BULL NOSE  
ELC ELECTRICAL COMPONENT  
EP ELECTRICAL PANEL  
EQ EQUAL  
EX EXISTING  
FD FLOOR DRAIN  
FHC FIRE HOSE CABINET  
FIN FINISH  
FIN.FL FINISH FLOOR  
FLM WINDOW FILM

FT FOOT  
FL FLOOR  
FRR FIRE RESISTANCE RATING  
GA GAUGE  
GALV GALVANIZED  
GB GRAB BAR  
GL GLASS  
GWB GYPSUM WALL BOARD  
OC ON CENTRE  
OH OPPOSITE HAND  
OSCI OWNER SUPPLIED, OWNER INSTALLED  
EP ELECTRICAL PANEL  
OSCI OWNER SUPPLIED, CONTRACTOR INS  
OWSJ OPEN WEB STEEL JOIST  
P.LAM PLASTIC LAMINATE  
PB PUSH BUTTON  
PT PAINT  
PTD PAPER TOWEL DISPENSER (OSCI)  
RB RUBBER

RD ROOF DRAIN  
RWL RAIN WATER LEADER  
SD SOAP DISPENSER (OSCI)  
ST D STEEL DECK  
SIM SIMILAR  
SL STREET LIGHT  
SND SANITARY NAPKIN DISPENSER (OSCI)  
ST STAIN  
OC ON CENTRE  
STC SOUND TRANSMISSION CLASS  
SWD SOLID WOOD DOOR  
TKB TACK BOARD  
TYP TYPICAL  
TPD TOILET PAPER DISPENSER (OSCI)  
U/S.O UNDERSIDE OF  
VERT VERTICAL  
WD WOOD  
WGL WIRED GLASS  
WWM WELDED WIRE MESH

- APPLY 2HR F.R.R. INTUMESCENT FIREPROOFING TO LOAD-BEARING STEEL MEMBERS, E.G., COLUMNS, BEAMS, ARCHES (LATERAL/CROSS BRACES EXCLUDED). THIN-FILM INTUMESCENT COATINGS: cUL 2611
- NOTES APPEAR ON VARIOUS DRAWINGS FOR SYSTEMS AND MATERIALS. REVIEW ALL SHEETS AND APPLY NOTES TO RELATED BUILDING COMPONENTS.
- REFER TO COMPLETE LIST OF ISSUED CONTRACT DOCUMENTS FOR OTHER APPLICABLE NOTES ABBREVIATIONS AND SYMBOLS.
- WHERE MATERIALS ARE APPLIED TO OR ARE IN DIRECT CONTACT WITH WORK INSTALLED BY OTHERS, COMMENCEMENT OF WORK IMPLIES ACCEPTANCE OF THE SUBSTRATE AS SUITABLE FOR THE APPLICATION INTENDED.
- ISOLATE DISSIMILAR MATERIALS TO PREVENT GALVANIC CORROSION.
- OPENING IN RATED WALL, FLOOR, CEILING AND ROOF ASSEMBLIES SHALL BE SEALED WITH PENETRATION SEALANT SYSTEMS MEETING OR EXCEEDING THE REQUIRED FIRE RESISTANCE RATINGS.
- MAINTAIN THE FIRE RATINGS OF CONSTRUCTION AROUND CABINETS, PANELS AND BOXES RECESSED INTO FIRE RATED ASSEMBLIES.
- PROVIDE CONTINUOUS PERIMETER FIRESTOPPING BETWEEN FLOORS AND COORDINATE THE INSTALLATION WITH THE EXTERIOR WALL. FIRE RATING OF FIRESTOPPING SHALL MATCH THE FIRE RATING OF THE FLOOR ASSEMBLY.
- DO NOT SCALE DRAWINGS.
- FIELD MEASURE AND CONFIRM DIMENSIONS FOR OWNER PROVIDED EQUIPMENT AND FURNISHINGS.
- PROVIDE STIFFENERS, BACKING PLATES, BRACING AND BLOCKING REQUIRED FOR SECURE INSTALLATION OF TOILET PARTITIONS, DOORS AND DOOR HARDWARE INCLUDING WALL MOUNTED DOOR STOPS, HANDRAILS, WALL MOUNTED SHELVES, OPERABLE PARTITIONS, MISCELLANEOUS EQUIPMENT AND SUSPENDED MECHANICAL AND ELECTRICAL EQUIPMENT.
- COORDINATE ALL BASE AND HOUSEKEEPING PAD SIZES AND LOCATIONS WITH MECHANICAL, PLUMBING AND ELECTRICAL EQUIPMENT.
- LOCATE ACCESS PANELS AS INDICATED ON DRAWINGS. FOR ACCESS PANELS NOT SHOWN BUT REQUIRED BY PROVISIONS OF THE CONTRACT DOCUMENTS, LOCATE IN ACCORDANCE WITH APPLICABLE CODES. SUBMIT PROPOSED LOCATIONS TO THE ARCHITECT FOR REVIEW AND ACCEPTANCE PRIOR TO INSTALLATION.
- DO NOT OBSTRUCT ACCESS TO EXISTING EXITS OR REDUCE THE WIDTH OF CORRIDORS.
- FULLY LAYOUT GRID, WALL AND OPENING PLACEMENT IN AN AREA PRIOR TO THE START OF PARTITION CONSTRUCTION. VERIFY THAT DIMENSIONS ARE CONSISTENT WITH REQUIREMENTS INDICATED IN THE DOCUMENTS. REPORT ANY DIMENSIONAL INCONSISTENCIES TO THE ARCHITECT FOR RESOLUTION PRIOR TO THE START OF PARTITION CONSTRUCTION.
- FINISH FLOOR ELEVATIONS ARE TO THE TOP OF CONCRETE SLAB UNLESS OTHERWISE NOTES.
- COORDINATE INSTALLATION OF DIFFUSERS, SPEAKERS, SPRINKLER HEADS AND ACCESS PANELS WITH LIGHTING LAYOUT. REPORT ANY INCONSISTENCIES TO THE ARCHITECT PRIOR TO INSTALLATION.
- EXIT SIGNS AND SMOKE DETECTORS LOCATED IN HARD CEILINGS SHALL BE POSITIONED AS REQUIRED BY THE AUTHORITY HAVING JURISDICTION, AND SHALL BE CENTERED IN CORRIDORS AND LOCATED A DISTANCE OF 1'-0" (300mm) FROM THE WALL TO THE CENTER OF THE FIXTURE UNLESS OTHERWISE NOTED.
- GANG MULTIPLE SWITCHES TOGETHER INTO ONE BOX WITH A SINGLE COVER PLATE WHEREVER POSSIBLE. MULTIPLE SWITCHES THAT CANNOT BE GANGED TOGETHER IN THE SAME BOX SHALL BE LOCATED CLOSE TOGETHER AND ALIGNED WITH OTHER DEVICES AS MUCH AS POSSIBLE.
- WALL OUTLETS AND SWITCH PLATES SHALL BE INSTALLED PER THE ELECTRICAL DRAWINGS UNLESS OTHERWISE NOTED.
- DO NOT INSTALL OUTLETS OR J-BOXES BACK-TO-BACK ON OPPOSITE SIDES OF THE SAME PARTITION. THESE OUTLETS AND BOXES MUST BE SEPARATED BY A STUD.
- WALL, FLOOR AND CEILING OUTLETS SHALL BE CAULKED WITH AN ACOUSTIC SEALANT MEETING OR EXCEEDING THE REQUIRED RATING.
- THE CONTRACTOR SHALL VERIFY ALL DIMENSIONS AND EXISTING CONDITIONS ON SITE AND SHALL REPORT ALL DISCREPANCIES TO THE ARCHITECT BEFORE PROCEEDING WITH THE WORK.
- ARCHITECTURAL DRAWINGS ARE TO BE READ IN CONJUNCTION WITH ALL OTHER CONSULTANT DRAWINGS.
- ALL MATERIALS AND WORKMANSHIP SHALL COMPLY WITH ALL APPLICABLE CANADIAN CONSTRUCTION STANDARDS AND THE ONTARIO BUILDING CODE (CURRENT ADDITION).
- WORK SHALL BE PERFORMED IN A MANNER THAT WILL MINIMIZE THE INTERRUPTION OF ACCESS IN ALL AREAS AFFECTED BY CONSTRUCTION.
- USE 3/4 INCH 4X8 FIRE RETARDANT PLYWOOD AT ELECTRICAL PANEL
- DROPPED CEILING REQUIRED AT:  
- ALL RESTROOMS - DRYWALL  
- BREAK ROOM AND OFFICE
- PORTABLE ADULT CHANGE TABLE STORED IN ELEVATOR MACHINE ROOM
- PLYWOOD BOARDS TO BE INSTALLED ON NORTH, SOUTH AND WEST INTERIOR ELEVATION OF DISPATCH AND RECEIVING.
- GC SHALL COORDINATE WITH U-HAUL ON FACILITY IMAGING, DSD, ETC.
- NO ROOFTOP VENTING PENETRATIONS ALLOWED
- BLDG A: CENTER LIGHTING IN CORRIDOR W/ HVAC & SPRINKLER LINE ON EITHER SIDE W/ BOT. 9FT AFF
- BLDG A: LOCKER MAXIMUM HEIGHT AT 9'. STACKING PROHIBITED BEYOND 9'.
- HEIGHT OF POWER RECEPTACLES:  
A. DISPATCH & RECEIVING @ 48" AFF  
B. CUSTOMER WELCOME AREA @ 12" AFF  
C. MAIN ENTRANCE LOBBY @ 12" AFF  
D. CORRIDORS @ 96" AFF
- STEEL PRE-ENGINEERED STAIRS BY MISC. METALS - STAIRWAY HEADROOM SHALL NOT BE LESS THAN 1.950 mm + THE HEIGHT OF ONE RISER MEASURED VERTICALLY ABOVE NOSING OF TREAD.
- SB-10 ENERGY MODEL TO BE SUBMITTED AT THE FIRST ROUND OF CITY COMMENTS
- CEMENTITIOUS FIREPROOFING SPRAY TO BE APPLIED TO ALL BEAMS, TO UNDERSIDE OF DECK, AND TO COLUMNS NOT ACCESSIBLE TO CUSTOMERS. CEMENTITIOUS SPRAY TO BE APPLIED TO COLUMNS WITHIN LOCKERS. INTUMESCENT THIN-FILM COATING TO BE APPLIED TO COLUMNS IN CUSTOMER FACING AREAS E.G. CUSTOMER WELCOME AREA AND CORRIDORS.
- LOOSE FURNITURE / FURNITURE, FIXTURES & EQUIPMENT (FFE) BY U-HAUL

## ARCHITECTURAL GENERAL NOTES

- PARTITIONS LOCATED BY DIMENSION STRING ARE DIMENSIONED TO THE FACE OF STUD UNLESS OTHERWISE NOTED.
- PARTITIONS NOT DIMENSIONED ARE GENERALLY LOCATED BY ONE OF THE FOLLOWING CRITERIA: CENTERLINE; CENTER OF PARTITION ALIGNS WITH THE CENTER OF GRIDLINE OR OBJECT CENTERLINE SUCH AS A COLUMN OR WINDOW MULLION. CENTER THE OVERALL PARTITION WIDTH. ALIGN LOCATE PARTITION FLUSH WITH FACE OF GYPSUM BOARD OR OTHER SURFACE INDICATED. MAINTAIN DIMENSIONS NOTED AS MINIMUM OR CLEAR.
- DOOR OPENING ARE DIMENSIONED TO EDGE OF DOOR FRAME. IF NOT DIMENSIONED, THE HINGE SIDE OF THE DOOR JAMB SHALL BE LOCATED 4" (100mm) FROM THE ADJACENT WALL.
- PARTITION TYPES IS FIRE RESISTANT RATINGS INDICATED ON A WALL ARE TO BE CONTINUOUS FOR THE LENGTH AND HEIGHT OF THE PARTITION.

## PARTITION NOTES

BLDG D - SHEET INDEX	
SHEET #	SHEET NAME
A-0000	COVER PAGE
A-0009	BLDG D - BUILDING ASSEMBLIES
A-0304	BLDG D - OBC MATRIX AND LIFE SAFETY PLANS
A-1001	ARCHITECTURAL SITE PLAN AND ZONING INFORMATION
A-4001	BLDG D - PLANS AND SECTIONS
A-4221	BLDG D - ENLARGED LOADING DOCK PLANS AND DETAILS
A-4251	BLDG D - DETAILS
A-4301	BLDG D - ELEVATIONS
A-4302	BLDG D - ENLARGED ELEVATION DETAILS
A-4431	BLDG D - WALL SECTIONS
A-9923	BLDG D - DOOR SCHEDULE
A-9942	BLDG D - WINDOW SCHEDULE AND DETAILS
A-9952	BLDG D - ROOM FINISH SCHEDULE AND FINISH SPECIFICATIONS

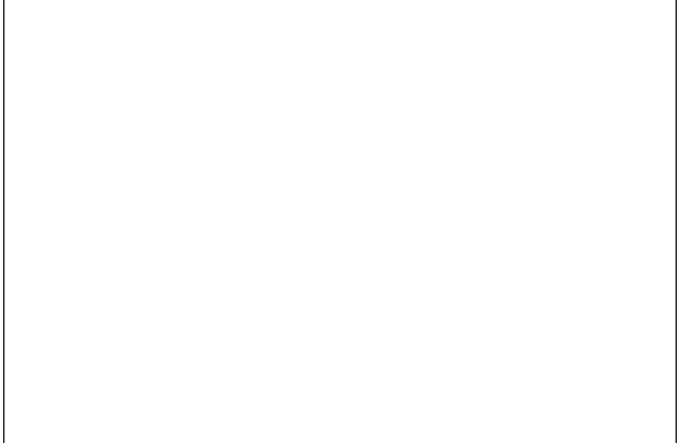
Sheet total: 13

CLIENT  
**U-Haul CO. (Canada) LTD.**

**COPYRIGHT**  
This drawing has been prepared solely for the intended use. No reproduction or distribution for any purpose other than authorized by IBI Group is permitted. Written dimensions shall have precedence over scaled dimensions. Contractors shall verify and be responsible for all dimensions and conditions on the job, and IBI Group shall be informed of any variations from the dimensions and conditions shown on the drawing. Shop drawings shall be submitted to IBI Group for general concurrence before proceeding with fabrication.

**IBI Group Architects (Canada) Inc.**  
is a member of the IBI Group of companies

ISSUES	No.	DESCRIPTION	DATE
1	CONCEPT DESIGN	2022-04-29	
2	DESIGN DEVELOPMENT	2022-06-03	
3	ISSUED FOR PERMIT	2022-07-19	
4	RESPONSE TO PERMIT COMMENTS - BLDG A	2022-09-27	
5	ISSUE FOR TENDER	2022-12-15	
6	ISSUE FOR COORD. - BLDG D	2022-12-16	



**CONSULTANTS**  
**ARCHITECTURE / PROJECT MANAGEMENT / TRANSPORTATION:**  
**IBI GROUP - OTTAWA**  
333 PRESTON STREET UNIT 400, OTTAWA, ON K1S 5N4

**CIVIL / LANDSCAPE / PLANNING: NOVATECH**  
240 MICHAEL COWPLAND DRIVE SUITE 101, KANATA, ON K2M 1P6

**GOODKEY, WEEDMARK & ASSOCIATES LIMITED CONSULTING ENGINEERS**  
1188 WOODWARD DRIVE, OTTAWA, ON, K2C 3R8

**CLELAND JARDINE ENGINEERING LTD**  
200-580 TERRY FOX, KANATA, ON, K2L 4B9

**STATE OF THE ART ACOUSTIC INC.**  
43-1010 POLYTEK STREET, OTTAWA, ON K1J 9J3

**J.D. BARNES LTD**  
103-62 STEACIE DRIVE, OTTAWA, ON K2K 2A9

**SENEZ CONSULTING LTD.**  
208 EVANS AVE. UNIT 2019, TORONTO, ON, M8Z 1J7

SEAL  
**APPROVED**  
By Allison Hamlin at 5:10 pm, Jan 25, 2023

*Allison Hamlin*  
**ALLISON HAMLIN**  
MANAGER (A), DEVELOPMENT REVIEW WEST  
PLANNING, REAL ESTATE & ECONOMIC DEVELOPMENT  
DEPARTMENT, CITY OF OTTAWA

**PRIME CONSULTANT**  
**IBI GROUP**  
400-333 Preston Street,  
Ottawa ON, K1S 5N4, Canada  
tel: 613 225 1311 fax: 613 225 9868  
ibigroup.com

**PROJECT**  
**U-HAUL MOVING & STORAGE OF OTTAWA**  
30 FRANK NIGHBOR PLACE, OTTAWA, ON  
U-Haul Facility 942072

**PROJECT NO:**  
138165

**DRAWN BY:**  
A. Chu  
**CHECKED BY:**  
Y. Bilbeisi

**PROJECT MGR:**  
Y. Bilbeisi  
**APPROVED BY:**  
H. Semple

**SHEET TITLE**  
COVER PAGE

**SHEET NUMBER**  
A-0000  
**ISSUE**  
6

2022-12-21 5:31:11 PM

Autodesk Docs/138165-Uhaul\_Kanata R2022/UH07-NewBldg\_Kanata.rvt



BUILDING D	
<b>EXTERIOR WALL ASSEMBLIES</b>	
TYPE: W11	<b>INSULATED METAL WALL PANEL</b> EXTERIOR INTERIOR 7'-6" 1" PBU CORRUGATED VERTICAL U-PANEL (TBD) FF.L.
R-VALUE: 22	3" INSULATED METAL PANEL K542 SHADOWLINE PROFILE EXT: 26GA, BONE WHITE, EMBOSSED (TBD) INT: 26GA, IMPERIAL WHITE, EMBOSSED (TBD)
cUL #: N/A	
TYPE: W12	<b>INSULATED METAL WALL PANEL</b> EXTERIOR INTERIOR 7'-6" 1" PBU CORRUGATED VERTICAL U-PANEL (TBD) FF.L.
R-VALUE: 22	3" INSULATED METAL PANEL K542 SHADOWLINE PROFILE EXT: 26GA, BONE WHITE, EMBOSSED (TBD) INT: 26GA, IMPERIAL WHITE, EMBOSSED (TBD)
cUL #: N/A	
<b>FLOOR AND ROOF ASSEMBLIES</b>	
TYPE: R1	<b>ROOF</b> EXTERIOR INTERIOR PRE-FINISHED METAL ROOF WITH AIR & VAPOUR BARRIER, ON Z-SERIES 4" INSULATED ROOF PANEL KINGSEAM RIBBED MESA PROFILE EXT: 26GA, IMPERIAL WHITE, EMBOSSED INT: 26GA, IMPERIAL WHITE, EMBOSSED 15MM ROOF SHEATHING (AIRVAPOUR BARRIER) STEEL DECK (REF. TO BUTLER) NOTE: TLS SYSTEM - MR24 - LINER PANEL PROVIDED BY BUTLER
R-VALUE: 40	
cUL #: N/A	
TYPE: F1	<b>FIRST FLOOR</b> 6" CAST IN PLACE CONCRETE SLAB (REF. TO STRUCTURAL) WELDED WIRED MESH (REF. TO STRUCTURAL) 15MM POLYETHYLENE VAPOUR BARRIER COMPACTED GRANULAR A OR GRANULAR B TYPE II (REF. TO GEOTECHNICAL REPORT) UNDISTURBED NATIVE SOIL
R-VALUE: N/A	
cUL #: N/A	
<b>CEILING ASSEMBLIES</b>	
TYPE: C3	<b>GYPSON CEILING ASSEMBLY</b> 22mm FURRING CHANNEL @ 800 O.C. 13mm ACOUSTIC CEILING TILE 6" - 1 1/2" NOTE: ACT TILE 60" X 60"
R-VALUE: N/A	
cUL #: N/A	

### Bird-Safe Designs

#### Option 1



Threat Factor 10

Color: V953 Medium Gray Viraspan  
Pattern: 1/8" vertical lines alternating with 1/2" spaces (screen 2256); 20% coverage

#### Option 2



Threat Factor 24

Color: V951 White  
Pattern: 1/8" dots (screen 5006); 40% coverage

### GLAZING SPECIFICATION - BLDG D

#### GLAZING PERFORMANCE DATA

PRODUCT DESCRIPTION: STARPHIRE® ULTRA-CLEAR GLASS IS A UNIQUE LOW-IRON GLASS, THE CLEAREST FLOAT GLASS AVAILABLE, DELIVERING HIGH LIGHT TRANSMITTANCE AND TRUE-COLOR FIDELITY.

#### PRODUCT LAYERS:

- 1/4" (6mm) STARPHIRE®
- 1/2" (12.7mm) SPACE - AIR - NO GAS
- 1/4" (6mm) STARPHIRE®

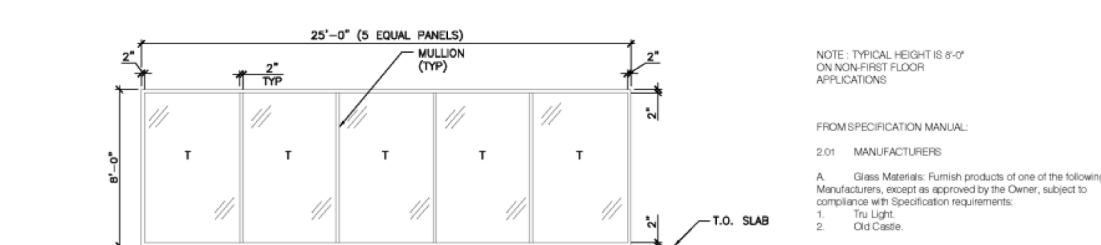
#### PERFORMANCE DATA

- |                      |                |
|----------------------|----------------|
| TRANSMITTANCE        | NRFC U-VALUE   |
| • VISIBLE LIGHT: 84% | • WINTER: 0.47 |
| • SOLAR ENERGY: 80%  | • SUMMER: 0.50 |
| • UV: 77%            |                |

- |                           |                           |
|---------------------------|---------------------------|
| REFLECTANCE               | SHADING COEFFICIENT: 0.94 |
| • VISIBLE LIGHT- EXT: 15% | SHGC: 0.82                |
| • VISIBLE LIGHT- INT: 15% | LSG: 1.02                 |
| • SOLAR ENERGY: 14%       |                           |

#### STORAGE AREA WINDOWS (TYPICAL)

- ALUMINUM STORE FRONT WINDOW WITH FIXED GLAZING
- BOTTOM OF WINDOW AT FINISHED FLOOR, UNLESS OTHERWISE NOTED



MUST BE CLEAR SINGLE PANE, 25" (1 1/4 INCH) TEMPERED GLASS WITH A VISIBLE LIGHT TRANSMITTANCE (VLT) OF 80% DO NOT ORDER ANY GLASS WITH LOW E TREATMENT, TINTING OR OTHER COATING

ALL FRAMES SHALL BE 4" DEEP OR MATCH EXISTING, CENTER-GLAZED, BLACK ANODIZED STOREFRONT FRAME

IF LOCAL BUILDING CODE REQUIRES A MORE ENERGY EFFICIENT WINDOW, USE DOUBLE PANELED, INSULATED GLASS WITH A VISIBLE LIGHT TRANSMITTANCE RATING OF 80% DO NOT ORDER ANY GLASS WITH LOW E TREATMENT, TINTING OR OTHER COATING

DOUBLE-PANE GLASS WINDOWS ARE DESIGNED TO RESIST LOADS AS PER OBC AND WILL NOT REQUIRE RAILING

MINIMUM DEFLECTION: L/100

### OTTAWA BIRD-SAFE DESIGN GUIDELINE SEPTEMBER 2020

- 2021-10-07
- c) Where glazing is used, bird-safe glass or glass with integrated protection measures is preferred (as per specifications below). Treatments should be applied to a minimum of 90% of the glass within the first 16 metres of height as measured from the finished grade, or to the height of the adjacent mature tree canopy, whichever is greater.
- d) Where green roofs, rooftop gardens or terraces are included in a design, any adjacent glazing should also be treated to a height of 4 m from the surface of the roof or terrace or the height of the adjacent mature vegetation, whichever is greater.

#### Specifications for Bird-Safe Glass

Several techniques can be used to make glass more visible to birds as a solid barrier. These include the use of closely spaced grilles or muntins (i.e., bars dividing individual panes of glass) and the application of commercial films and visual markers. Patterns and images can be applied directly to the glass during manufacture using ceramic fritting, acid etching, digital printing or silk-screening. Creative solutions such as painted murals may also be an option in some cases. Permanent or built-in treatments are preferred for their durability, but other solutions can be effective as long as they are properly maintained and replaced when necessary.

In cases where transparent glass is not required for visibility, low-reflectance opaque or frosted glass (including channel glass and glass blocks) are excellent options to reduce or eliminate collisions. Various finishes are available with differing levels of light transmission. This may include reflective or low-emissivity coatings that have an outside reflectance of 15% or less. Opaque or frosted glass with an outside reflectance of greater than 15% should only be used in combination with other strategies such as visual markers.

#### Specifications for effective visual markers:

- High colour contrast to the glass surface.
- Must be applied to the exterior (first) surface of the glass.
- Any pattern of visual marker is acceptable (i.e. lines, dots, etc.) as long as a maximum spacing of 50 mm by 50 mm is used (see Figure 6 below).
- Individual marker elements should be a minimum of 4 mm diameter, or 2 mm wide by 8 mm long for linear elements.

Treatments applied to interior surfaces of the glass will not adequately address reflectivity issues. They will also be less effective at reducing transparency issues if reflectivity is not addressed.



Comply with CSA A460:19 Bird-friendly building design  
Visual markers should be used in a glazing unit on the first surface, colour: white

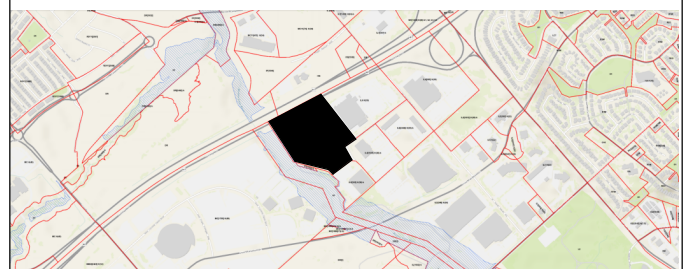
CLIENT  
U-Haul CO. (Canada) LTD.

**COPYRIGHT**  
This drawing has been prepared solely for the intended use, and its reproduction or distribution for any purpose other than authorized by IBI Group is forbidden. Written dimensions shall have precedence over scaled dimensions. Contractors shall verify and be responsible for all dimensions and conditions on the job, and IBI Group shall be informed of any variations from the dimensions and conditions shown on the drawing. Shop drawings shall be submitted to IBI Group for general conformance before proceeding with fabrication.

IBI Group Architects (Canada) Inc.  
is a member of the IBI Group of companies

ISSUES		
No.	DESCRIPTION	DATE
1	CONCEPT DESIGN	2022-04-29
2	DESIGN DEVELOPMENT	2022-06-03
3	ISSUED FOR PERMIT	2022-07-19
4	RESPONSE TO SPC COMMENTS	2022-08-26
5	2ND RESUBMISSION - EIS / LANDSCAPE	2022-10-17
6	3RD RESUBMISSION - EIS / LANDSCAPE	2022-11-16
7	ISSUE FOR TENDER	2022-12-15
8	ISSUE FOR COORD. - BLDG D	2022-12-16

#### KEYPLAN



#### CONSULTANTS

ARCHITECTURE / PROJECT MANAGEMENT / TRANSPORTATION  
IBI GROUP - OTTAWA  
333 PRESTON STREET UNIT 400, OTTAWA, ON K1S 5N4

CIVIL / LANDSCAPE / PLANNING: NOVATECH  
240 MICHAEL COWPLAND DRIVE SUITE 101, KANATA, ON K2M 1P6

GOODKEY, WEEDMARK & ASSOCIATES LIMITED CONSULTING ENGINEERS  
1188 WOODWARD DRIVE, OTTAWA, ON K2C 3R8

CLELAND JARDINE ENGINEERING LTD  
290-380 TERRY FOX, KANATA, ON, K2L 4B9

STATE OF THE ART ACOUSTIC INC.  
43-1010 POLYTEK STREET, OTTAWA, ON K1J 9J3

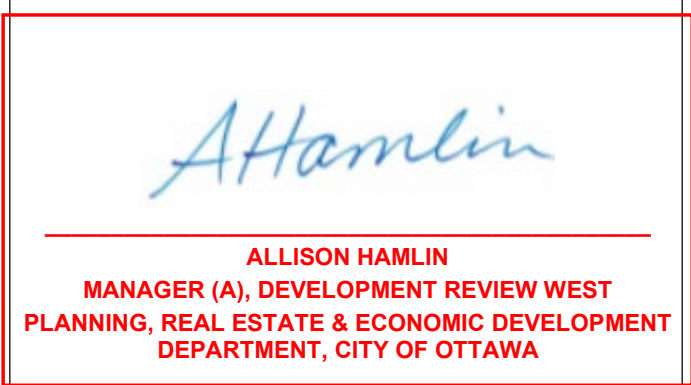
J.D. BARNES LTD  
103-62 STEACIE DRIVE, OTTAWA, ON K2K 2A9

SENEZ CONSULTING LTD.,  
208 EVANS AVE. UNIT 2019, TORONTO, ON, M8Z 1J7

SEAL

**APPROVED**

By Allison Hamlin at 5:10 pm, Jan 25, 2023



#### PRIME CONSULTANT

IBI GROUP  
400-333 Preston Street,  
Ottawa ON, K1S 5N4, Canada  
Tel: 613 225 1311 fax: 613 225 9668  
ibigroup.com

PROJECT  
U-HAUL MOVING & STORAGE OF OTTAWA  
30 FRANK NIGHBOR PLACE, OTTAWA, ON  
U-Haul Entity 942072

PROJECT NO:  
138165

DRAWN BY:  
A. Chu

CHECKED BY:  
Y. Bilbeisi

PROJECT MGR:  
Y. Bilbeisi

APPROVED BY:  
H. Semple

SHEET TITLE  
BLDG D - BUILDING ASSEMBLIES

SHEET NUMBER  
A-0009

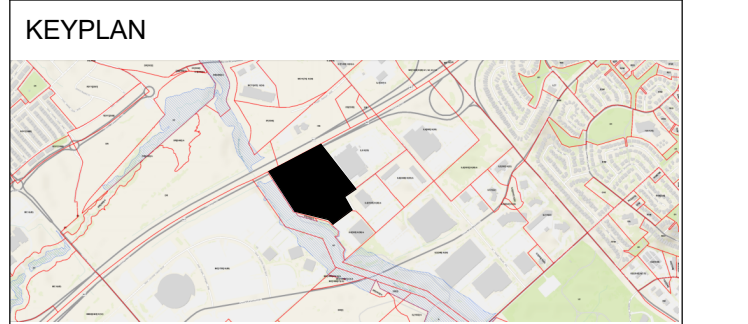
ISSUE  
8



COPYRIGHT  
This drawing has been prepared solely for the intended use. Any reproduction or distribution for any purpose other than authorized by IBI Group is forbidden. Written dimensions shall have precedence over scaled dimensions. Contractors shall verify and be responsible for all dimensions and conditions on the job, and IBI Group shall be informed of any variations from the dimensions and conditions shown on the drawing. Shop drawings shall be submitted to IBI Group for general conformance before proceeding with fabrication.

IBI Group Architects (Canada) Inc.  
is a member of the IBI Group of companies

ISSUES		
No.	DESCRIPTION	DATE
1	CONCEPT DESIGN	2022-04-29
2	ISSUED FOR SITE PLAN CONTROL APPLICATION	2022-05-18
3	DESIGN DEVELOPMENT	2022-06-03
4	ISSUED FOR PERMIT	2022-07-19
5	RESPONSE TO SPC COMMENTS	2022-08-26
6	ISSUE FOR TENDER	2022-12-15
7	ISSUE FOR COORD. - BLDG D	2022-12-16



- CONSULTANTS
- ARCHITECTURE / PROJECT MANAGEMENT / TRANSPORTATION:  
IBI GROUP - OTTAWA  
333 PRESTON STREET UNIT 400, OTTAWA, ON K2C 3R8
  - CIVIL / LANDSCAPE / PLANNING: NOVATECH  
240 MICHAEL COWPLAND DRIVE SUITE 101, KANATA, ON K2M 1P6
  - GOODKEY, WEEDMARK & ASSOCIATES LIMITED  
CONSULTING ENGINEERS  
1188 WOODWARD DRIVE, OTTAWA, ON K2C 3B5
  - CLELAND JARDINE ENGINEERING LTD  
200-380 TERRY FOX, KANATA, ON, K2L 4B9
  - STATE OF THE ART ACOUSTIC INC.  
43-1010 POLYTEK STREET, OTTAWA, ON K1J 9J3
  - J.D. BARNES LTD  
103-62 STEACIE DRIVE, OTTAWA, ON K2K 2A9
  - SENEZ CONSULTING LTD.,  
208 EVANS AVE. UNIT 2019, TORONTO, ON, M8Z 1J7

SEAL  
**APPROVED**  
By Allison Hamlin at 5:10 pm, Jan 25, 2023

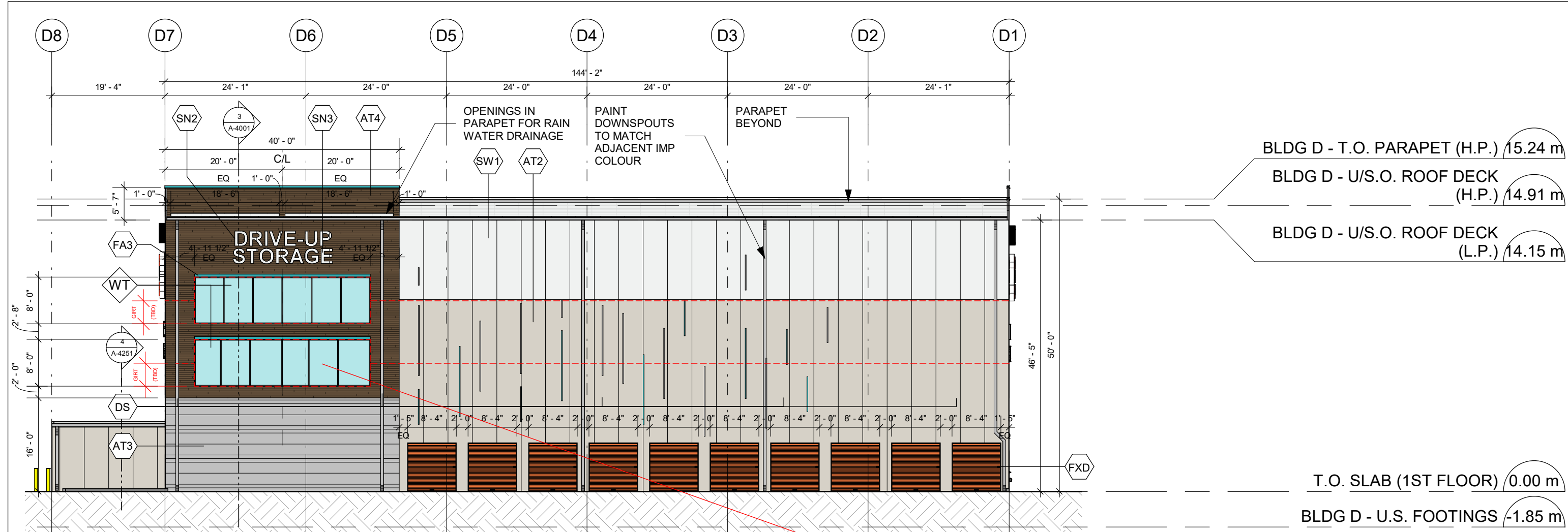
*Allison Hamlin*  
ALLISON HAMLIN  
MANAGER (A), DEVELOPMENT REVIEW WEST  
PLANNING, REAL ESTATE & ECONOMIC DEVELOPMENT  
DEPARTMENT, CITY OF OTTAWA

PRIME CONSULTANT  
**IBI GROUP**  
400-333 Preston Street,  
Ottawa ON, K1S 5N4, Canada  
Tel: 613 225 1311 Fax: 613 225 9668  
ibigroup.com

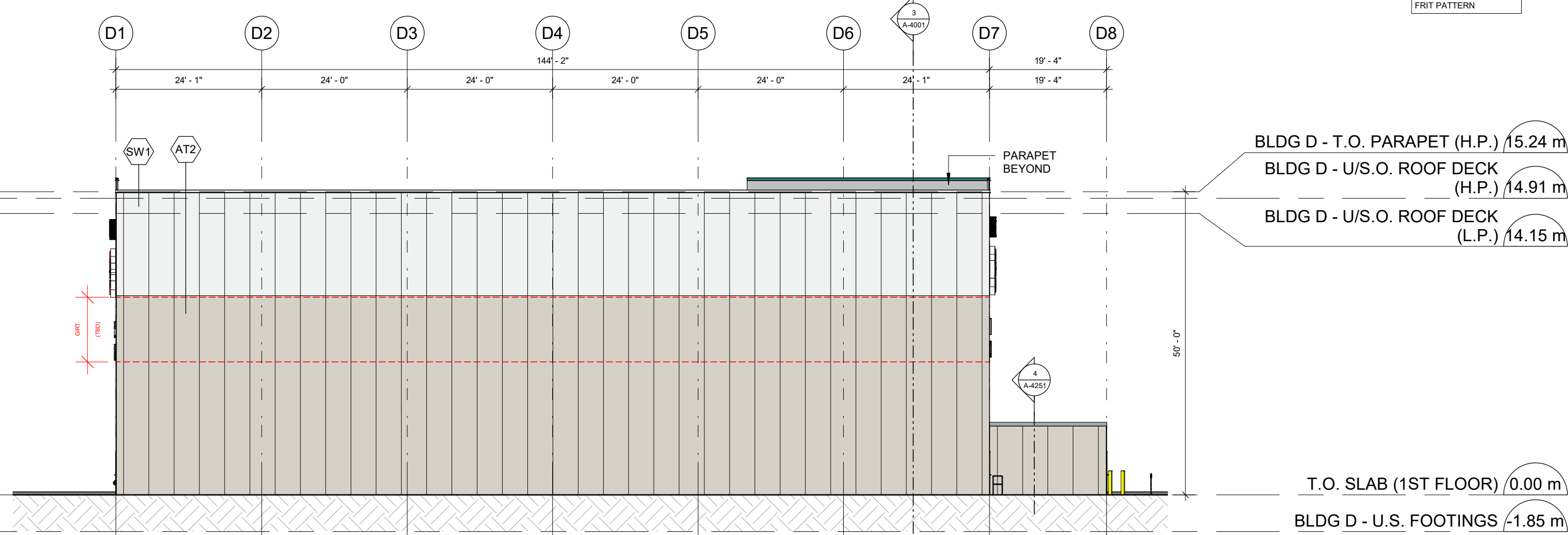
PROJECT  
**U-HAUL MOVING & STORAGE OF OTTAWA**  
30 FRANK NIGHBOR PLACE, OTTAWA, ON  
U-Haul Entity 942072

PROJECT NO:  
138165  
DRAWN BY:  
**A. Chu**  
PROJECT MGR:  
**Y. Bilbetsi**  
SHEET TITLE  
**BLDG D - ELEVATIONS**

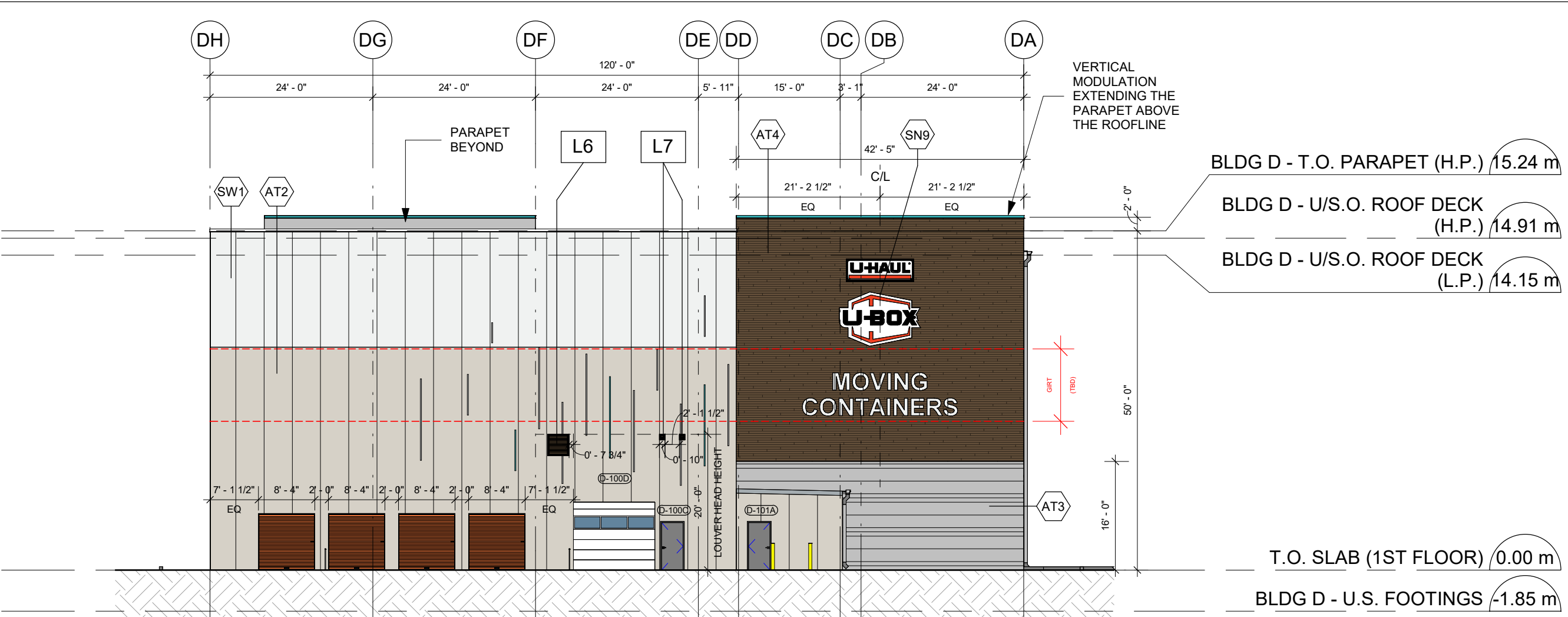
CHECKED BY:  
**Y. Bilbetsi**  
APPROVED BY:  
**H. Semple**  
SHEET NUMBER  
**A-4301**  
ISSUE  
**7**



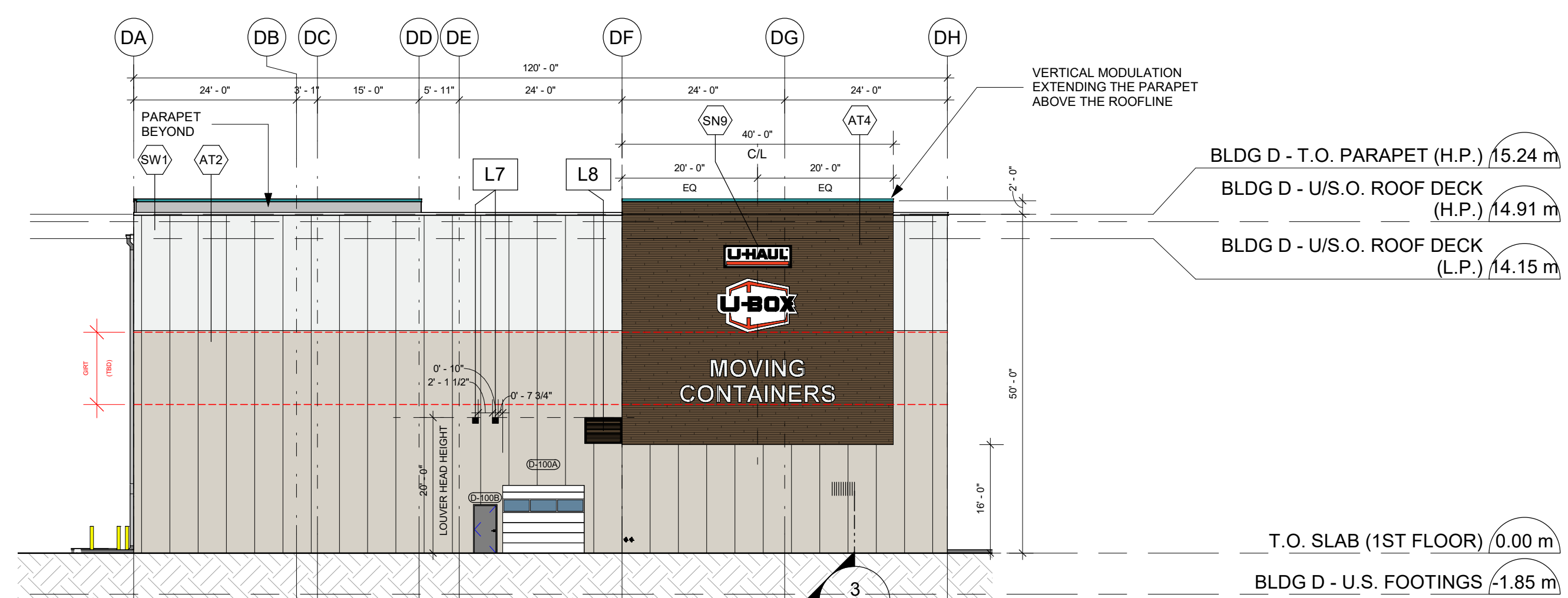
1 BLDG D - ELEVATION - EAST  
1 : 200



3 BLDG D - ELEVATION - WEST  
1 : 200



2 BLDG D - ELEVATION - SOUTH  
1 : 200



4 BLDG D - ELEVATION - NORTH  
1 : 200

MARK	FINISH	COLOUR	DESCRIPTION
DS			DOWNSPOUT TO AVOID WINDOWS AND SIGNAGE
FA1			
FA2			
FA3			
FA4			
FA5			
FXD			FAUX DOOR - PREFINISHED - "SIERRA SUNSET"
SN1			LIT CABINET SIGN 12"W X 7"H 84 SQFT
SN2			PLASTIC FORMED CHANNEL LETTERS 15.2"W X 2.5"H 38 SQFT
SN3			PLASTIC FORMED CHANNEL LETTERS 16.77"W X 2.5"H 41.92 SQFT
SN4			PLASTIC FORMED CHANNEL LETTERS 18.24"W X 3"H 54.72 SQFT
SN5			PLASTIC FORMED CHANNEL LETTERS 20.13"W X 3"H 60.39 SQFT
SN6			PLASTIC FORMED CHANNEL LETTERS 13.95"W X 2.5"H 34.87 SQFT
SN7			PLASTIC FORMED CHANNEL LETTERS 17.03"W X 2.5"H 42.57 SQFT
SN8			PLASTIC FORMED CHANNEL LETTERS 34.29"W X 2.5"H 171.45 SQFT
SN9			LIT CABINET SIGN (REFER TO U-HAUL IMAGING)
AT1	PREFINISHED	ATAS "SIERRA TAN"	

**KINGSPAN OR EQUIVALENT**  
LAP SIDING EMBOSSED HORIZONTAL WALNUT  
KINGSPAN PANELING WITH WOOD GRAIN FINISH, PROVIDES ARTICULATION AND WARMTH TO THE BUILDING

**BEST PANEL COMPANY OR EQUIVALENT**  
TUMBLER SERIES REGAL OAK  
BEST PANEL COMPANY REVOLUTION TUMBLER BRICK PROVIDES DEPTH AND TEXTURE

**ATAS RIGID WALL II OR EQUIVALENT**  
Rigid Wall II profiles are available in widths of 8", 12", or 16". The panels are 1/2" deep and provide dramatic shadow lines with their 1 1/2" wide ribs. The panels utilize the "WoodLike" concealed fastening system and offer uninterrupted vertical or horizontal sight lines.

KINGSPAN ARCHITECTURAL PANELING PROVIDES ARTICULATION, DEPTH AND TEXTURE TO THE BUILDING

**VERSA-SEAM OR EQUIVALENT**  
Versa-Seam is a rainscreen style system that requires a water and air barrier system behind it. The panel forms architectural shadow lines in its horizontal installation and is available with three optional reveal or shadow line configurations and optional end folds.

STUCCO EMBOSSED IMP; PROVIDES SUPERIOR R22.45 INSULATION, LEED ENERGY COMPLIANT

MARK	FINISH	COLOUR	DESCRIPTION
AT2	PREFINISHED	ATAS "SANDSTONE"	
AT3	PREFINISHED	ATAS "SILVERSMITH"	
AT4	PREFINISHED	ATAS WOODLAND SERIES "WALNUT"	
CN1	PREFINISHED	SW 6748 "GREENS" (OR EQUIVALENT)	CANOPY - ARCHITECTURAL AWNING DETAIL
CN2	PREFINISHED		CANOPY - PROMINENT ENTRY FEATURE
SW1	PREFINISHED	SW 7070 "SITE WHITE"	
SW2	PREFINISHED	SW 6451 "NURTURE GREEN"	
W1	LIGHT BROOM FINISH	LIGHT GRAY	TILT-UP EXPOSED AGGREGATE CONCRETE
WD			DISPLAY WINDOW w/ BIRD SAFE FRIT - SEE A-0009
WF			FALSE WINDOW w/ BIRD SAFE FRIT - SEE A-0009
L1			LOUVER 18"W X 18"H
L2			LOUVER 5"W X 5"H
L3			LOUVER 12"W X 12"H
L4			LOUVER 20"W X 36"H
L5			LOUVER 20"W X 52"H
L6			LOUVER 32"W X 32"H
L7			LOUVER 4"W X 4"H
L8			LOUVER 60"W X 40"H
L9			LOUVER 36"W X 20"H
L10			LOUVER 24"W X 20"H
L11			LOUVER 40"W X 40"H
L12			LOUVER 72"W X 32"H

- BLDG D NOTES:**
- GIRTS DRAWN ARE REFERENCE / INDICATIVE ONLY. IMP SUPPLIER TO PROVIDE SHOP DRAWINGS FOR REVIEW.
  - SUPPORTING OF INSULATED METAL PANELS PROVIDED BY THIRD PARTY
  - WINDOW FRAMINGS BY MISCELLANEOUS METALS ENGINEER
  - REFER TO U-HAUL DSD IMAGING DOCUMENT
- GENERAL NOTES:**
- BRACEFRAMES IN THE WINDOWS TO BE PAINTED WHITE
  - CHANGE IN MATERIALS TO PROVIDE VISUAL SEPARATION TO THE FACADE
  - GENEROUS USE OF GLASS - GLAZING TO BE FRITTED
  - ARCHITECTURAL PENETRATION TO ENHANCE RETAIL UNIFORMITY IN THE AREA
  - ARTISTIC USE OF MATERIALS
  - PROJECTION CREATES ARCHITECTURAL INTEREST ABOVE CUSTOMER STORAGE AREA AND PROVIDES PROTECTION FROM THE ELEMENTS
  - VERTICAL AND HORIZONTAL MODULATION IN THE BUILDING
  - ARCHITECTURAL ARTICULATION CREATES WALL PROTECTION AND VISUAL INTEREST
  - ARCHITECTURAL MODULATION CONVEYING A MORE RETAIL APPEARANCE
  - GLASS COLOR FOR FAUX WINDOWS (DISPLAY GLASS) TO MATCH THE LOOK AND COLOR OF TRUE WINDOWS



**DOOR NOTES:**

- ALL DOOR GLAZING SHALL BE TEMPERED SAFETY GLASS AND PERMANENTLY IDENTIFIED BY THE MANUFACTURER.
- LOCK & LATCH SETS SHALL HAVE LEVER DEVICES FOR USE BY THOSE WITH DISABILITIES.
- HAND ACTIVATED DOOR OPENING HARDWARE TO BE CENTERED @ 30" TO 44" A.F.F. & BE OPENED WITH A SINGLE EFFORT BY LEVER TYPE HARDWARE.
- MAXIMUM EFFORT TO OPERATE SHALL NOT EXCEED 8.5 POUNDS FOR EXTERIOR DOORS AND 5 POUNDS FOR INTERIOR DOORS.
- THE BOTTOM 10" OF ALL DOORS SHALL HAVE A SMOOTH UNINTERRUPTED SURFACE.
- ALL REQUIRED EXIT DOORWAYS SHALL HAVE A MINIMUM OF 32" CLEAR OPENING WITH THE DOOR @ 90° TO THE CLOSED POSITION.
- THE MAXIMUM HEIGHT OF THRESHOLD TO BE 1/2" MAX., VERTICAL CHANGE @ EDGE IS 1/4" WITH A MAXIMUM BEVEL OF 45°.
- IF A DOOR HAS A CLOSER, THEN THE SWEEP PERIOD OF THE CLOSER SHALL BE ADJUSTED SO THAT FROM AN OPEN POSITION OF 70°, THE DOOR WILL TAKE AT LEAST 3 SECONDS TO MOVE TO A POINT 3" (75 MM) FROM THE LATCH, MEASURED TO THE LEADING EDGE OF THE DOOR.
- VERIFY ALL DOOR OPENINGS BEFORE FABRICATION.

**DOOR ABBREVIATIONS**

AL	- ALUMINUM
ALI	- INSULATED ALUMINUM
HM	- HOLLOW METAL
HMI	- INSULATED HOLLOW METAL
STL	- STEEL
TG	- TEMPERED GLASS
RH	- RIGHT HAND
LH	- LEFT HAND
RHR	- RIGHT HAND REVERSE
LHR	- LEFT HAND REVERSE

**HARDWARE SCHEDULE:**

**A. AUTOMATIC SLIDING ENTRANCE DOOR**  
- FULL WEATHERSTRIP  
(1) 1" SINGLE CYLINDER DEAD BOLT, KEYED BOTH SIDES  
(1) KEY SWITCH AND KEYED LOCK  
(1) AUTOLOCK PER SCHEDULE  
- NO THRESHOLD

**B. CUSTOMER ENTRANCE DOOR**  
- FULL WEATHERSTRIP  
(3) HINGES  
(1) LEVER HANDLE LOCK SET WITH KEY LOCK: EXTERIOR  
(1) PANIC HARDWARE: INTERIOR  
(1) SELF CLOSER  
(1) CRASH CHAIN  
(1) ALUMINUM THRESHOLD 1/2" MAX

**C. RESTROOM DOOR - EXTERIOR**  
- FULL WEATHERSTRIP  
(3) HINGES  
(1) LEVER HANDLE LOCK SET  
(1) SCHLAGE OCCUPANCY INDICATOR DEADBOLT  
(1) ALUMINUM THRESHOLD 1/2" MAX.  
(1) SELF CLOSER  
(1) KEYPAD  
(3) SILENCERS

**D. RESTROOM DOOR - INTERIOR**  
(3) HINGES  
(1) LEVER HANDLE LOCK SET  
(1) SCHLAGE OCCUPANCY INDICATOR DEADBOLT  
(1) ALUMINUM TILE EDGE/ THRESHOLD 1/2" MAX  
(1) SELF CLOSER  
(3) SILENCERS  
(1) WALL BUMPER PER SCHEDULE

**E. STORAGE LOCKER ROLL-UP DOOR**  
(1) STAINLESS STEEL PADLOCK SLIDE BOLT  
(2) COILING SPRINGS WITH DOOR

**F. STORAGE LOCKER SWING DOOR**  
(3) HINGES AT DOOR TYPES SA, 5B  
(2) HINGES AT DOOR TYPE 5C  
(1) C-501 DOOR MOUNTED GRASPABLE LATCH

**G. SWING DOOR - EXTERIOR**  
(3) HINGES  
(1) PANIC HARDWARE - INTERIOR SIDE  
(1) SELF CLOSER  
(3) SILENCERS  
(1) ALUMINUM THRESHOLD 1/2" MAX

**H. SWING DOOR - INTERIOR**  
(3) HINGES  
(1) PANIC HARDWARE - INTERIOR SIDE  
(1) LEVER HANDLE LOCK SET AT EXTERIOR SIDE, PER PLAN  
(1) SELF CLOSER  
(3) SILENCERS  
(1) ALUMINUM THRESHOLD 1/2" MAX

**J. SWING DOOR - INTERIOR**  
(3) HINGES  
(1) LEVER HANDLE LOCK SET WITH KEY LOCKS  
(1) SELF CLOSER  
(3) SILENCERS  
(1) WALL BUMPER PER SCHEDULE

**K. EXIT STAIR DOOR - INTERIOR**  
(3) HINGES  
(1) PANIC HARDWARE  
(1) LEVER HANDLE LOCK SET AT STAIR SIDE  
(1) SELF CLOSER  
(3) SILENCERS

**L. SECTION OVERHEAD DOOR**  
- FULL WEATHERSTRIP  
(1) PROVIDE POWER OPERATOR  
(1) SAFETY EDGE AT BOTTOM

NOTE: U-HAUL ADVP OR OWNERS REP SHALL PROVIDE PAINT FINISH SCHEDULE (EGG SHELL, FLAT, OR SHEEN) PER U-HAUL CURRENT SPECS.

Door Schedule - Building D

DOOR #	DOOR					FRAME					HARD WARE	COMMENT	
	DOOR TYPE	NOMINAL WIDTH	NOMINAL HEIGHT	DOOR MATERIAL	HANDING	FINISH AND COLOUR	GLASS	FIRE RATING	MATERIAL	FINISH AND COLOUR			FIRE RATING
D-100A	4B	12' - 0"	10' - 0"	STL		FACTORY PRIMED - FIELD PAINT U-HAUL EGGSHELL BLACK (P-K)	TG		STL	FACTORY PRIMED - FIELD PAINT U-HAUL EGGSHELL BLACK (P-K)		L	
D-100B	3	3' - 2"	7' - 0"	HMI		FACTORY PRIMED - FIELD PAINT TO MATCH ADJACENT WALLS			HMI	FACTORY PRIMED - FIELD PAINT TO MATCH ADJACENT WALLS		G	PROVIDE 1/2" CONDUIT INSIDE DOOR FRAMES (LATCH SIDE) FOR SECURITY DEVICES
D-100C	3	3' - 2"	7' - 0"	HMI		FACTORY PRIMED - FIELD PAINT TO MATCH ADJACENT WALLS			HMI	FACTORY PRIMED - FIELD PAINT TO MATCH ADJACENT WALLS		G	PROVIDE 1/2" CONDUIT INSIDE DOOR FRAMES (LATCH SIDE) FOR SECURITY DEVICES
D-100D	4B	12' - 0"	10' - 0"	STL		FACTORY PRIMED - FIELD PAINT U-HAUL EGGSHELL BLACK (P-K)	TG		STL	FACTORY PRIMED - FIELD PAINT U-HAUL EGGSHELL BLACK (P-K)		L	
D-101A	3	3' - 2"	7' - 0"	HMI		FACTORY PRIMED - FIELD PAINT TO MATCH ADJACENT WALLS			HMI	FACTORY PRIMED - FIELD PAINT TO MATCH ADJACENT WALLS		G	PROVIDE 1/2" CONDUIT INSIDE DOOR FRAMES (LATCH SIDE) FOR SECURITY DEVICES

CLIENT  
**U-Haul CO. (Canada) LTD.**

**COPYRIGHT**  
This drawing has been prepared solely for the intended use. No reproduction or distribution for any purpose other than authorized by IBI Group is forbidden. Written dimensions shall have precedence over scaled dimensions. Contractors shall verify and be responsible for all dimensions and conditions on the job, and IBI Group shall be informed of any variations from the dimensions and conditions shown on the drawing. Shop drawings shall be submitted to IBI Group for general conformance before proceeding with fabrication.

**IBI Group Architects (Canada) Inc.**  
is a member of the IBI Group of companies

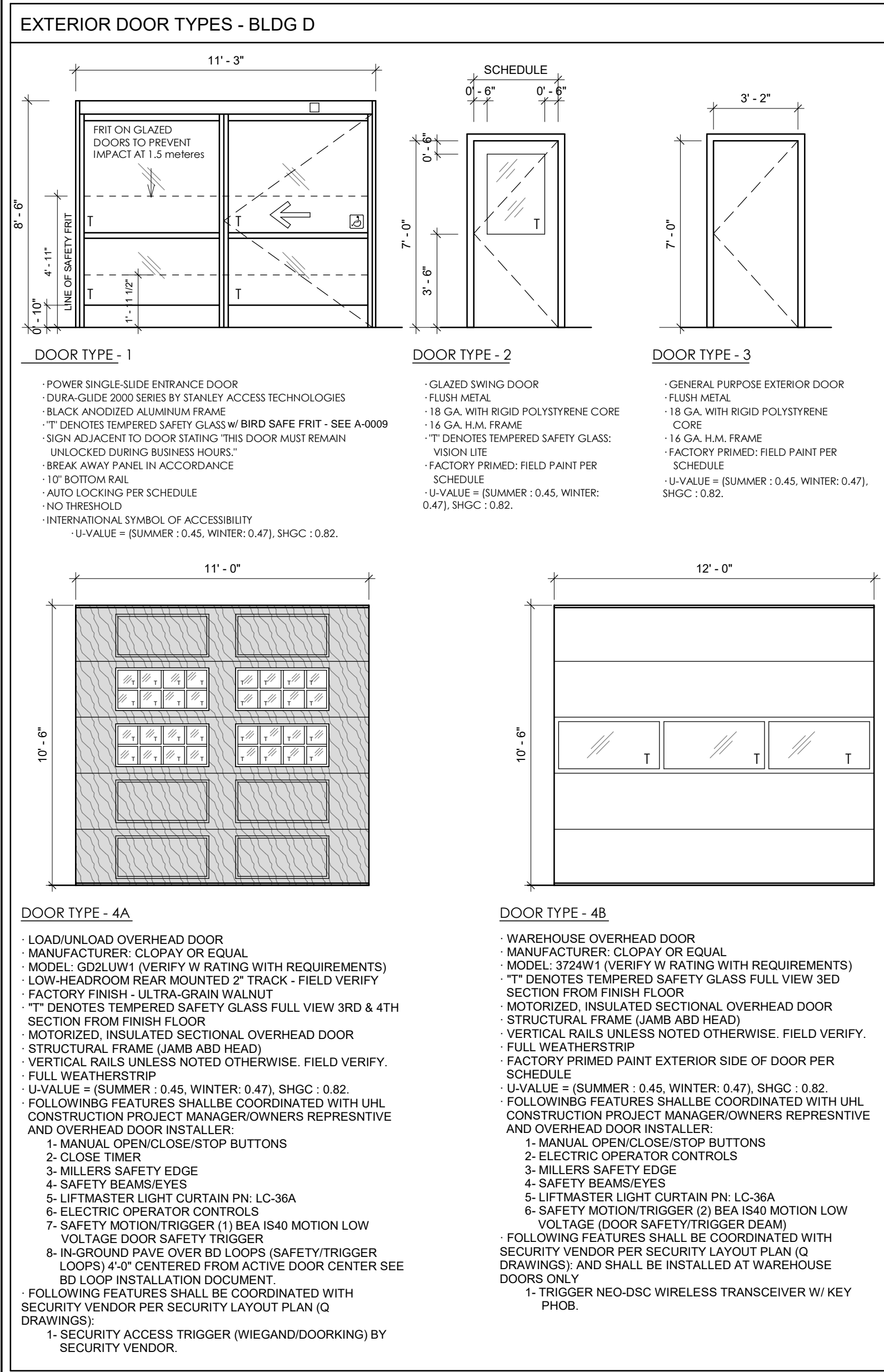
**ISSUES**

No.	DESCRIPTION	DATE
1	ISSUED FOR PERMIT	2022-07-19
2	ISSUE FOR TENDER	2022-12-15
3	ISSUE FOR COORD. - BLDG D	2022-12-16

**APPROVED**  
By Allison Hamlin at 5:10 pm, Jan 25, 2023

*Allison Hamlin*

**ALLISON HAMLIN**  
MANAGER (A), DEVELOPMENT REVIEW WEST  
PLANNING, REAL ESTATE & ECONOMIC DEVELOPMENT  
DEPARTMENT, CITY OF OTTAWA



- ALL PASSAGE DOOR DOORWAYS SHALL HAVE A 32" (815mm) MIN. CLEAR OPENING WIDTH. CLEAR OPENINGS OF DOORWAYS WITH SWING DOORS ARE MEASURED FROM THE FACE OF THE DOOR TO THE STOP WHEN THE DOOR IS OPENED 90°. THERE SHALL BE NO PROJECTIONS IN TO THE REQUIRED CLEAR WIDTH LOWER THAN 34" (865mm) ABOVE FINISHED FLOOR. PROJECTIONS INTO THE CLEAR WIDTH BETWEEN 34" (865mm) AND 80" (2030mm) SHALL NOT EXCEED 4" (100mm).
- ALL THRESHOLDS TO BE BRUSHED ALUMINUM AND A MAXIMUM OF 1/2" (12mm) IN HEIGHT.
- ALL DOOR HANDLES SHALL BE LEVER TYPE, MOUNTED BETWEEN 34" (865mm) AND 48" (1220mm) MEASURED FROM FINISHED FLOOR TO CENTERLINE OF LEVER.
- ALL EXTERIOR MAN DOORS TO HAVE ACCESSIBLE THRESHOLDS.
- REFER TO DOOR SCHEDULE AND/OR SPECIFICATIONS FOR DOOR SPECS AND FINISH.
- EXTERIOR HOLLOW METAL DOORS TO HAVE A FIELD PAINTED ENAMEL FINISH.
- ALL GLAZING IN DOORS TO BE LAMINATED SAFETY GLASS.
- ALL EXTERIOR DOORS TO BE WEATHERSTRIPPED.
- GLAZING IN STOREFRONT DOORS TO MATCH COLOUR AND TINT OF ADJACENT GLAZING.
- VERIFY ALL DOOR HARDWARE WITH OWNER PRIOR TO INSTALLATION.
- ALL FIRE RATED DOORS, INCLUDING DOORS WITH GLAZING, SHALL BEAR APPROVAL AGENCY RATING LABELS.
- HARDWARE ON FIRE RATED DOORS SHALL BE LISTED FOR THOSE RATINGS.
- ALL FIRE RATED DOOR ASSEMBLIES SHALL HAVE CLOSERS AND BE SELF LATCHING.
- PROVIDE PRIVACY LOOKS AT ALL SINGLE OCCUPANT WASHROOMS.
- PROVIDE 22ga. GALVANIZED BONDERIZED FLASHING AT ALL DOOR HEADS. COLOUR TO MATCH ADJACENT WALL FINISH. VERIFY WITH OWNER.

**DOOR AND FRAME NOTES**

**CONSULTANTS**

**ARCHITECTURE / PROJECT MANAGEMENT / TRANSPORTATION:**  
IBI GROUP - OTTAWA  
333 PRESTON STREET UNIT 400, OTTAWA, ON K1S 5N4

**CIVIL / LANDSCAPE / PLANNING: NOVATECH**  
240 MICHAEL COWPLAND DRIVE SUITE 101, KANATA, ON K2M 1P6

**GOODKEY, WEEDMARK & ASSOCIATES LIMITED CONSULTING ENGINEERS**  
1188 WOODWARD DRIVE, OTTAWA, ON K2C 3R8

**CLELAND JARDINE ENGINEERING LTD**  
200-380 TERRY FOX, KANATA, ON, K2L 4B9

**STATE OF THE ART ACOUSTIC INC.**  
43-1010 POLYTEK STREET, OTTAWA, ON K1J 9J3

**J.D. BARNES LTD**  
103-62 STEACIE DRIVE, OTTAWA, ON K2K 2A9

**SENEZ CONSULTING LTD.,**  
208 EVANS AVE. UNIT 2019, TORONTO, ON, M8Z 1J7

**PRIME CONSULTANT**

**IBI GROUP**  
400-333 Preston Street,  
Ottawa ON, K1S 5N4, Canada  
Tel 613 225 1311 fax 613 225 9868  
ibigroup.com

**PROJECT**  
**U-HAUL MOVING & STORAGE OF OTTAWA**  
30 FRANK NIGHBOR PLACE, OTTAWA, ON  
U-Haul Entity 942072

**PROJECT NO:**  
138165

**DRAWN BY:**  
A. Chu

**CHECKED BY:**  
Y. Bilbeisi

**PROJECT MGR:**  
Y. Bilbeisi

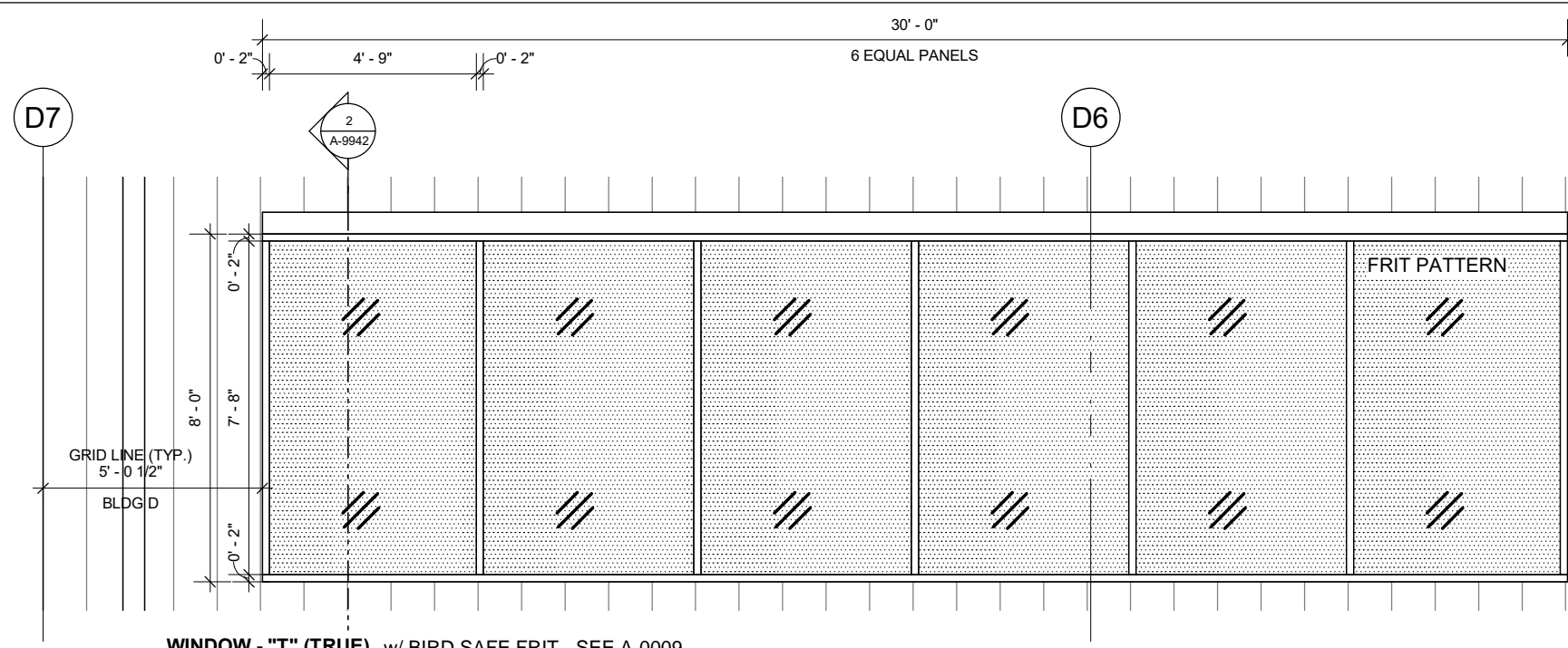
**APPROVED BY:**  
H. Semple

**SHEET TITLE**  
**BLDG D - DOOR SCHEDULE**

**SHEET NUMBER**  
**A-9923**

**ISSUE**  
**3**

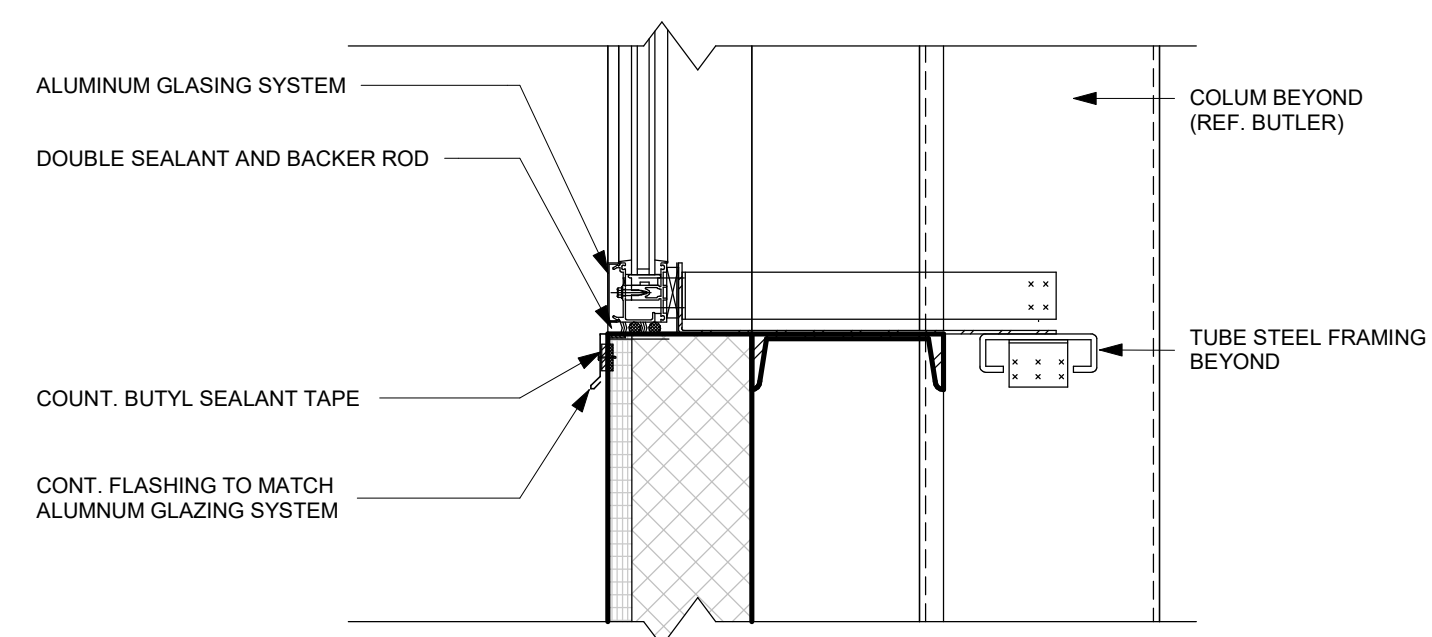
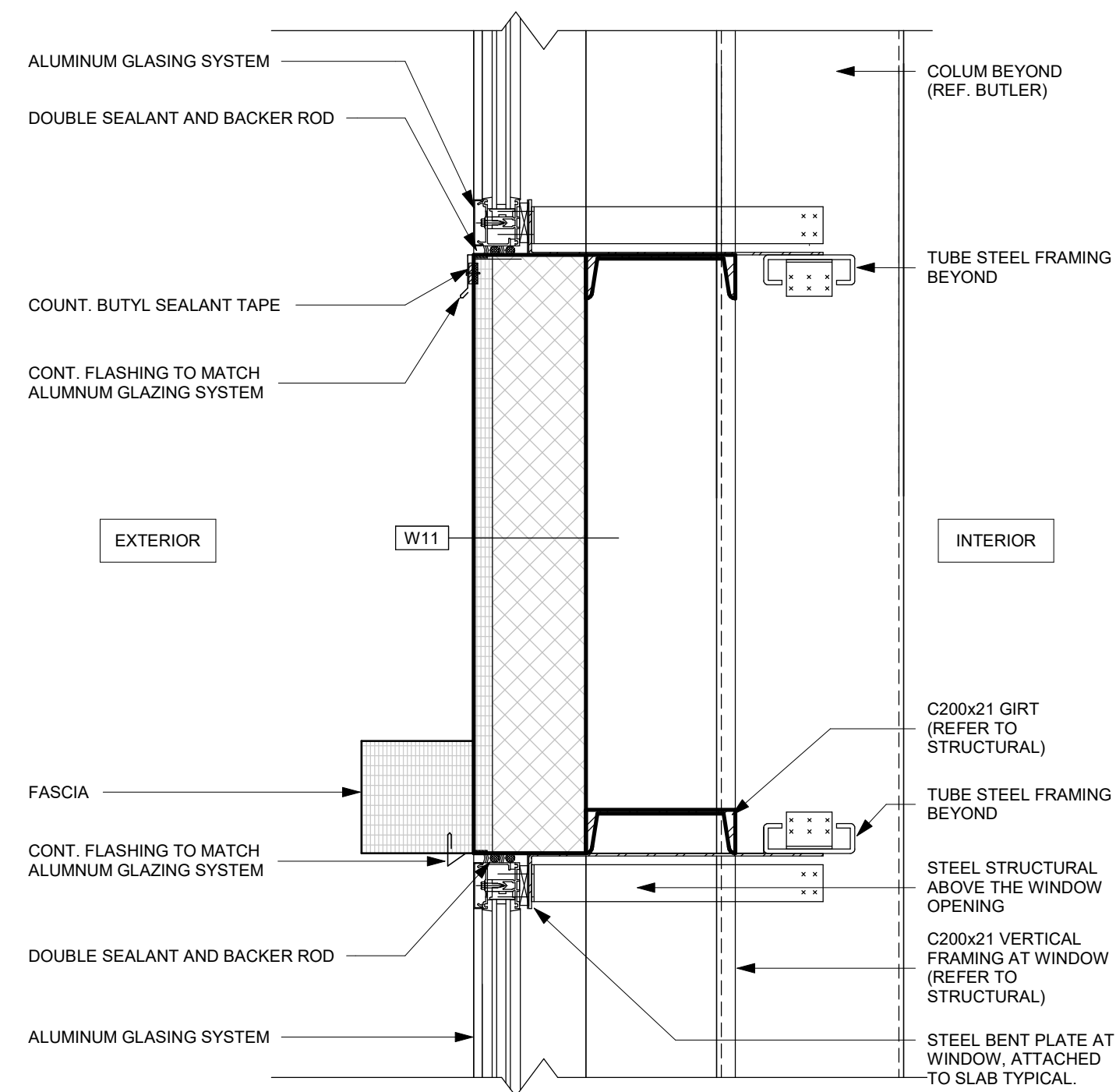
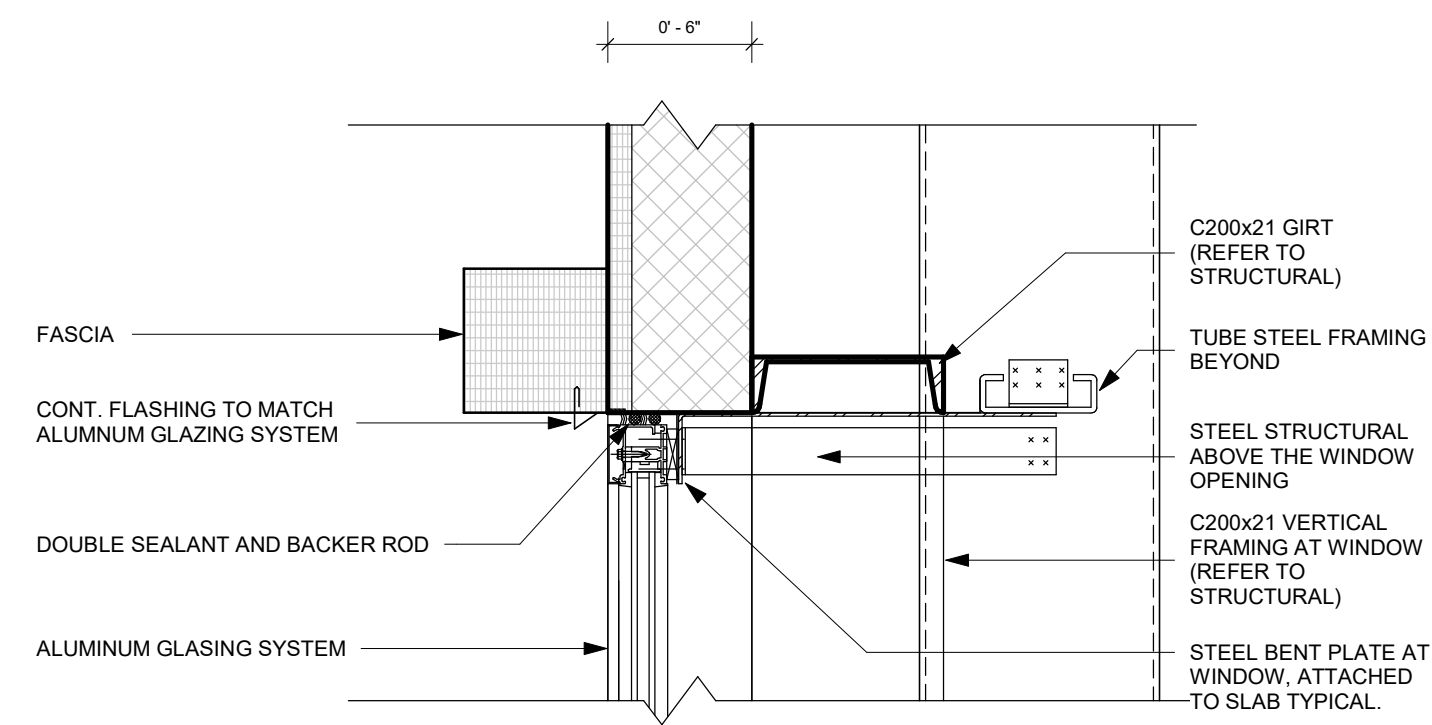
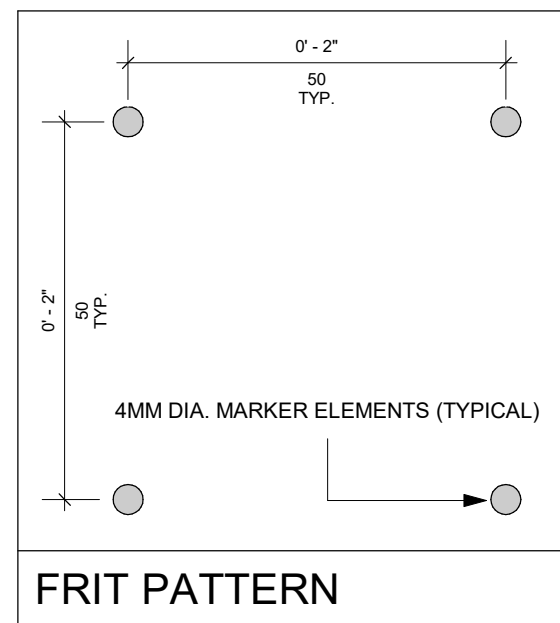




**WINDOW - "T" (TRUE)** w/ BIRD SAFE FRIT - SEE A-0009  
 ALUMINUM STOREFRONT WINDOW WITH FIXED GLAZING  
 SIZE AS NOTED - FIELD VERIFY  
 THERMALLY BROKEN  
 CENTER-GLAZED  
 ANODIZED FRAME FINISH - BLACK  
 QUANTITY = 2  
 U-VALUE = (SUMMER : 0.50, WINTER: 0.47), SHGC : 0.82.

**1 BLDG D - "WT" (TRUE) - ELEVATION**  
 1/4" = 1'-0"

- NOTE:**
- BLDG D - ALL WINDOWS TO HAVE FRITTED GLASS
  - WINDOW FRAMING BY MISCELLANEOUS METALS ENGINEER



**2 BLDG D - "WT" - SECTION - EAST**  
 1 1/2" = 1'-0"

CLIENT  
**U-Haul CO. (Canada) LTD.**

**COPYRIGHT**  
 This drawing has been prepared solely for the intended use. No reproduction or distribution for any purpose other than authorized by IBI Group is forbidden. Written dimensions shall have precedence over scaled dimensions. Contractors shall verify and be responsible for all dimensions and conditions on the job, and IBI Group shall be informed of any variations from the dimensions and conditions shown on the drawing. Shop drawings shall be submitted to IBI Group for general conformance before proceeding with fabrication.

**IBI Group Architects (Canada) Inc.**  
 is a member of the IBI Group of companies.

ISSUES		
No.	DESCRIPTION	DATE
1	ISSUED FOR PERMIT	2022-07-19
2	RESPONSE TO PERMIT COMMENTS - BLDG D	2022-09-06
3	2ND RESUBMISSION - EIS / LANDSCAPE	2022-10-17
4	3RD RESUBMISSION - EIS / LANDSCAPE	2022-11-16
5	ISSUE FOR TENDER	2022-12-15
6	ISSUE FOR COORD. - BLDG D	2022-12-16

**APPROVED**  
 By Allison Hamlin at 5:10 pm, Jan 25, 2023

*Allison Hamlin*  
**ALLISON HAMLIN**  
 MANAGER (A), DEVELOPMENT REVIEW WEST  
 PLANNING, REAL ESTATE & ECONOMIC DEVELOPMENT  
 DEPARTMENT, CITY OF OTTAWA

- CONSULTANTS**
- ARCHITECTURE / PROJECT MANAGEMENT / TRANSPORTATION:**  
**IBI GROUP - OTTAWA**  
 333 PRESTON STREET UNIT 400, OTTAWA, ON K1S 5N4
  - CIVIL / LANDSCAPE / PLANNING: NOVATECH**  
 240 MICHAEL COWPLAND DRIVE SUITE 101, KANATA, ON K2M 1P6
  - GOODKEY, WEEDMARK & ASSOCIATES LIMITED CONSULTING ENGINEERS**  
 1188 WOODWARD DRIVE, OTTAWA, ON K2C 3R8
  - CLELAND JARDINE ENGINEERING LTD**  
 200-380 TERRY FOX, KANATA, ON, K2L 4B9
  - STATE OF THE ART ACOUSTICK INC.**  
 43-1010 POLYTEK STREET, OTTAWA, ON K1J 9J3
  - J.D. BARNES LTD**  
 103-62 STEACIE DRIVE, OTTAWA, ON K2K 2A9
  - SENEZ CONSULTING LTD.,**  
 208 EVANS AVE. UNIT 2019, TORONTO, ON, M8Z 1J7

**SEAL**

**PRIME CONSULTANT**  
**IBI GROUP**  
 400-333 Preston Street,  
 Ottawa ON, K1S 5N4, Canada  
 Tel: 613 225 1311 Fax: 613 225 9668  
 ibigroup.com

**PROJECT**  
**U-HAUL MOVING & STORAGE OF OTTAWA**  
 30 FRANK NIGHBOR PLACE, OTTAWA, ON  
 U-Haul Entity 942072

**PROJECT NO:**  
 138165

<b>DRAWN BY:</b> A. Chu	<b>CHECKED BY:</b> Y. Bilbeisi
<b>PROJECT MGR:</b> Y. Bilbeisi	<b>APPROVED BY:</b> H. Semple

**SHEET TITLE**  
**BLDG D - WINDOW SCHEDULE AND DETAILS**

<b>SHEET NUMBER</b> <b>A-9942</b>	<b>ISSUE</b> <b>6</b>
--------------------------------------	--------------------------