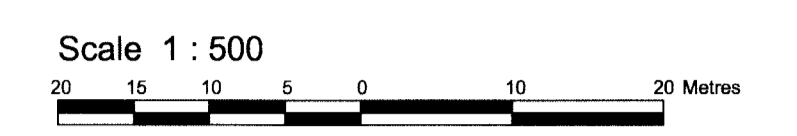


TOPOGRAPHICAL PLAN OF
**PART OF LOTS 2 AND 3
 CONCESSION 3 (OTTAWA FRONT)**
 Geographic Township of Gloucester
 CITY OF OTTAWA

Prepared by Annis, O'Sullivan, Vollebek Ltd.
 Field Work Completed August 10, 2017



Metric
 DISTANCES SHOWN ON THIS PLAN ARE IN METRES AND
 CAN BE CONVERTED TO FEET BY DIVIDING BY 0.3048

Aug 11 2017
 Date
 E. H. Horvath
 Ontario Land Surveyor

- Notes & Legend**
- Denotes Survey Monument Planted
 - Survey Monument Found
 - SSIB - Standard Iron Bar
 - SSIB - Short Standard Iron Bar
 - IB - Iron Bar
 - (WIT) - Witness
 - (AOG) - Annis, O'Sullivan, Vollebek Ltd.
 - Meas. - Measured
 - (P1) - Plan
 - FH - Fire Hydrant
 - ⊕ w - Water Valve
 - MH-S - Maintenance Hole (Sanitary Sewer)
 - MH-ST - Maintenance Hole (Storm Sewer)
 - MH - Maintenance Hole (Unidentified)
 - CBMH - Catch Basin Maintenance Hole
 - CB - Catch Basin
 - LD - Landscape Drain
 - CSP - Corrugated Steel Pipe
 - DC - Depressed Curb
 - ⊕ GM - Gas Meter
 - B - Bollard
 - LS - Light Standard
 - T/G - Top of Grate
 - T/P - Top of Pipe
 - CLF - Chain Link Fence
 - SRW - Stone Retaining Wall
 - ⊕ FP - Flag Pole
 - +65.00 - Location of Elevations
 - +65.00' - Location of Top of Retaining Wall Elevations



Bearings are grid, derived from the Northern Limit of chemin Renaud Road on Plan... showing a bearing of N58°30'10"E and are referred to the Central Meridian of MTM Zone 9 (78°30' West Longitude) NAD-83 (original).

SITE AREA = 50585 m²

BOUNDARY INFORMATION COMPILED FROM PLAN 4R-27554.

ELEVATION NOTES

- Elevations shown are geodetic and are referred to the CGVD28 geodetic datum.
- It is the responsibility of the user of this information to verify that the job benchmark has not been altered or disturbed and that its relative elevation and description agrees with the information shown on this drawing.

UTILITY NOTES

- This drawing cannot be accepted as acknowledging all of the utilities and it will be the responsibility of the user to contact the respective utility authorities for confirmation.
- Only visible surface utilities were located.
- A field location of underground plant by the pertinent utility authority is mandatory before any work involving breaking ground, probing, excavating etc.