

PHOTOMETRIC REPORT

PROJECT TITLE:

50 the Driveway

DATE:

2022-11-22

DRAWN BY:

KJB

NOTES:

PRELIMINARY STUDY FOR DISCUSSION

NOTES:

1. THIS LIGHTING DESIGN IS BASED ON LIMITED INFORMATION SUPPLIED BY OTHERS TO BDA LIGHTING GROUP. SITE DETAILS PROVIDED HEREIN ARE REPRODUCED ONLY AS A VISUALIZATION AID. FIELD DEVIATIONS MAY SIGNIFICANTLY AFFECT PREDICTED PERFORMANCE. PRIOR TO INSTALLATION, CRITICAL SITE INFORMATION (POLE LOCATIONS, ORIENTATION, MOUNTING HEIGHT, ETC.) SHOULD BE COORDINATED WITH THE CONTRACTOR AND/OR SPECIFIER RESPONSIBLE FOR THE PRODUCT.

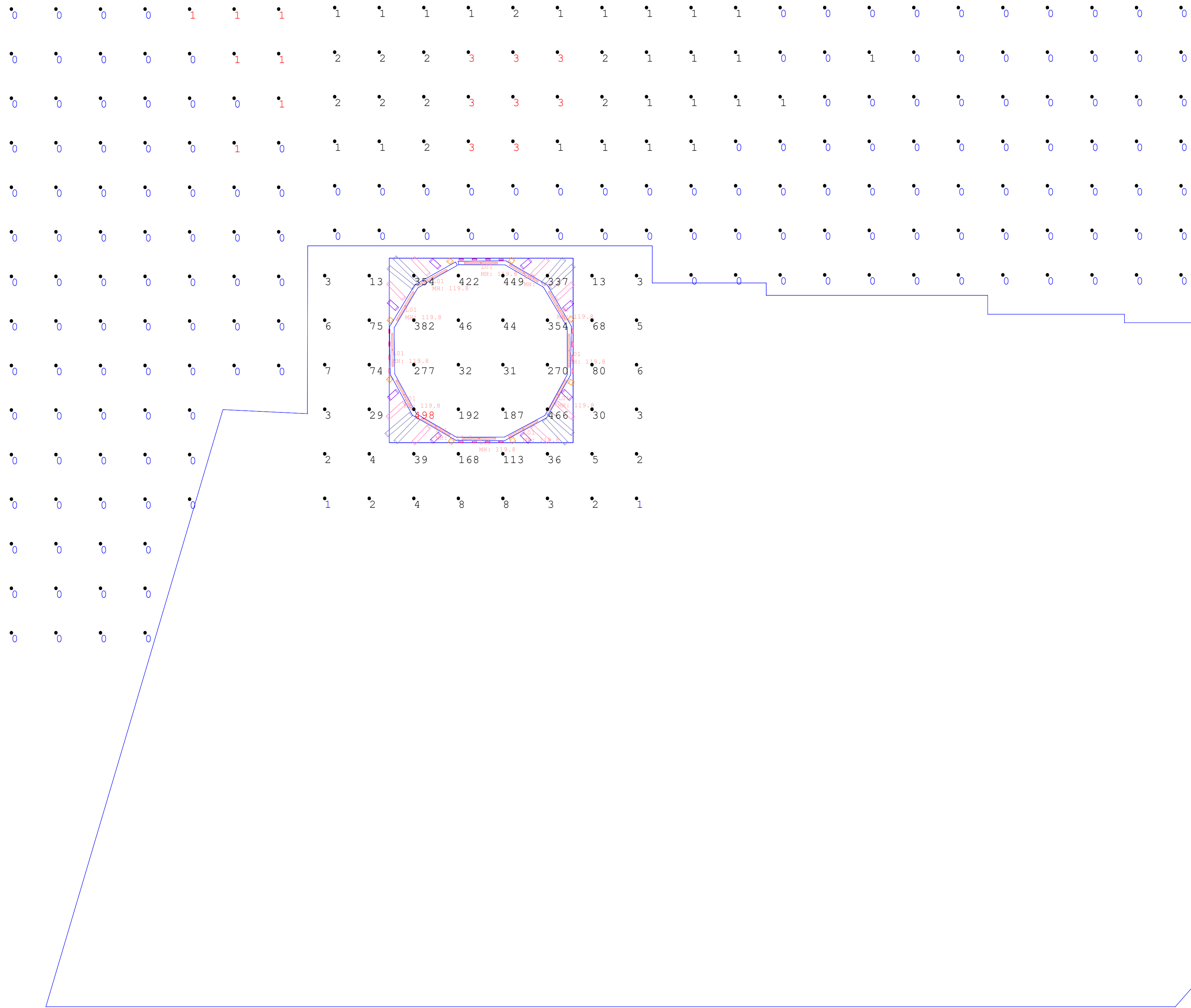
2. LUMINAIRE DATA IS TESTED TO INDUSTRY STANDARDS UNDER LABORATORY CONDITIONS. OPERATING VOLTAGE AND MANUFACTURING TOLERANCES OF LAMP, BALLAST, DRIVERS, AND LUMINAIRE MAY AFFECT FIELD RESULTS.

3. CONFORMANCE TO FACILITY CODE AND OTHER LOCAL REQUIREMENTS IS THE RESPONSIBILITY OF THE OWNER AND/OR OWNER'S REPRESENTATIVE.

4. REFLECTANCES VALUES FOR ROOMS ARE: CEILING 0.8, WALL 0.5 AND FLOOR 0.2 UNLESS OTHERWISE NOTED

5. REFLECTANCES VALUES FOR OBJECTS ARE 0.5; UNLESS OTHERWISE NOTED

CLIENT:



**PHOTOMETRIC REPORT**

PROJECT TITLE:

**50 the Driveway**

DATE:

2022-11-22

DRAWN BY:

KJB

NOTES:

**PRELIMINARY STUDY  
FOR DISCUSSION**

NOTES:

1. THIS LIGHTING DESIGN IS BASED ON LIMITED INFORMATION SUPPLIED BY OTHERS TO BDA LIGHTING GROUP. SITE DETAILS PROVIDED HEREIN ARE REPRODUCED ONLY AS A VISUALIZATION AID. FIELD DEVIATIONS MAY SIGNIFICANTLY AFFECT PREDICTED PERFORMANCE. PRIOR TO INSTALLATION, CRITICAL SITE INFORMATION (POLE LOCATIONS, ORIENTATION, MOUNTING HEIGHT, ETC.) SHOULD BE COORDINATED WITH THE CONTRACTOR AND/OR SPECIFIER RESPONSIBLE FOR THE PRODUCT.
2. LUMINAIRE DATA IS TESTED TO INDUSTRY STANDARDS UNDER LABORATORY CONDITIONS. OPERATING VOLTAGE AND MANUFACTURING TOLERANCES OF LAMP, BALLAST, DRIVERS, AND LUMINAIRE MAY AFFECT FIELD RESULTS.
3. CONFORMANCE TO FACILITY CODE AND OTHER LOCAL REQUIREMENTS IS THE RESPONSIBILITY OF THE OWNER AND/OR OWNER'S REPRESENTATIVE.
4. REFLECTANCES VALUES FOR ROOMS ARE: CEILING 0.8, WALL 0.5 AND FLOOR 0.2 UNLESS OTHERWISE NOTED
5. REFLECTANCES VALUES FOR OBJECTS ARE 0.5; UNLESS OTHERWISE NOTED

CLIENT:



Luminaire Schedule								
Symbol	Qty	Label	LLF	Description	Manufacturer	Lum. Watts	Lum. Lumens	Controls
	12	L01	0.900	LOG RO-100_277-48-35K-15x25-NO	LUMENPULSE	34	1896	

Calculation Summary										
Label	Units	Target Lux	Avg	Max	Min	Avg/Min	Max/Min	PtSpcLr	PtSpcTb	Grid Z
North Spill	Lux		0.51	3	0	N.A.	N.A.	6	6	0
ROOF	Lux		107.44	498	1	107.44	498.00	6	6	102
West Spill	Lux		0.08	1	0	N.A.	N.A.	6	6	0

**PHOTOMETRIC REPORT**

PROJECT TITLE:

**50 the Driveway**

DATE:

2022-11-22

DRAWN BY:

KJB

NOTES:

**PRELIMINARY STUDY  
FOR DISCUSSION**

NOTES:

1. THIS LIGHTING DESIGN IS BASED ON LIMITED INFORMATION SUPPLIED BY OTHERS TO BDA LIGHTING GROUP. SITE DETAILS PROVIDED HEREIN ARE REPRODUCED ONLY AS A VISUALIZATION AID. FIELD DEVIATIONS MAY SIGNIFICANTLY AFFECT PREDICTED PERFORMANCE. PRIOR TO INSTALLATION, CRITICAL SITE INFORMATION (POLE LOCATIONS, ORIENTATION, MOUNTING HEIGHT, ETC.) SHOULD BE COORDINATED WITH THE CONTRACTOR AND/OR SPECIFIER RESPONSIBLE FOR THE PRODUCT.

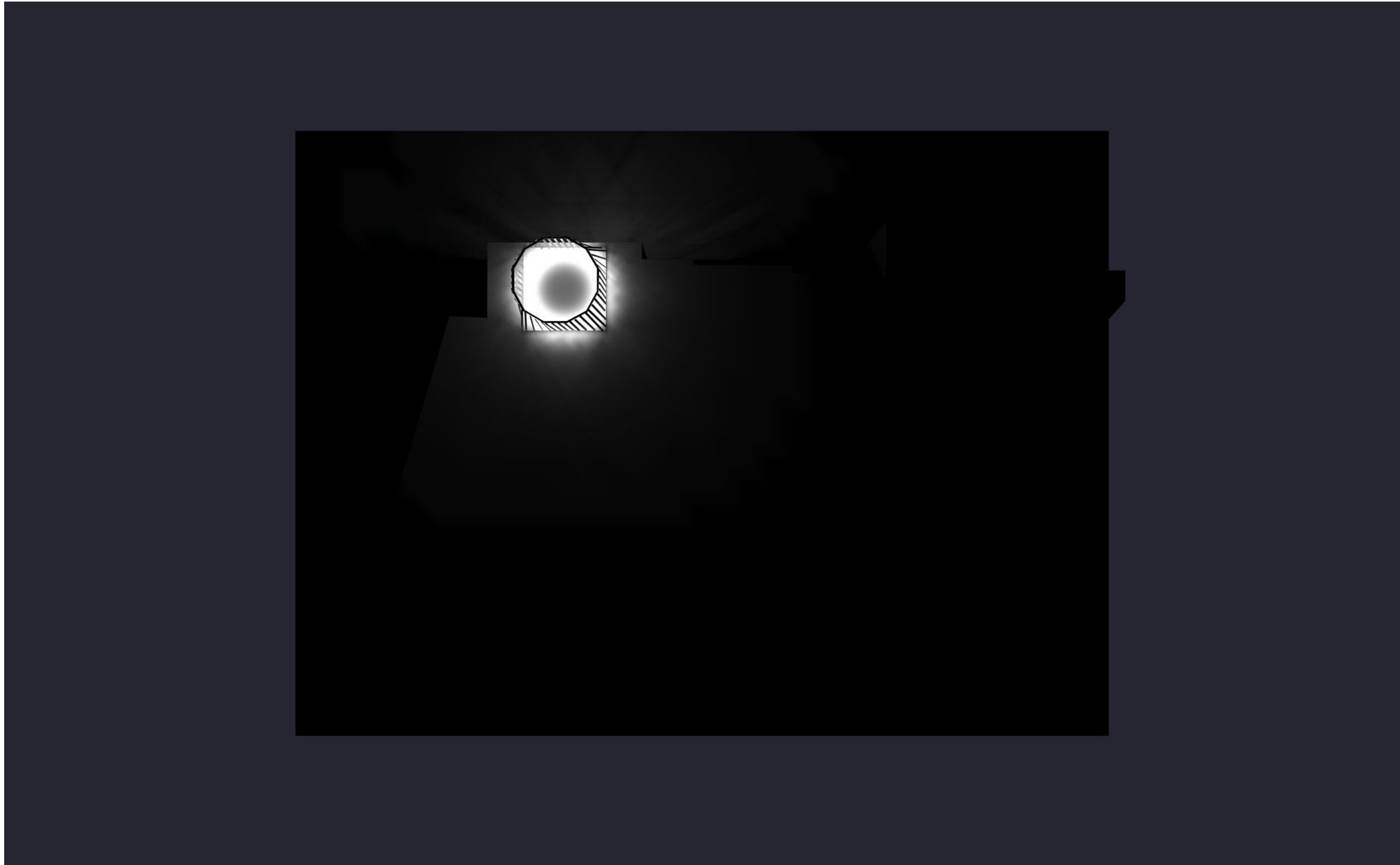
2. LUMINAIRE DATA IS TESTED TO INDUSTRY STANDARDS UNDER LABORATORY CONDITIONS. OPERATING VOLTAGE AND MANUFACTURING TOLERANCES OF LAMP, BALLAST, DRIVERS, AND LUMINAIRE MAY AFFECT FIELD RESULTS.

3. CONFORMANCE TO FACILITY CODE AND OTHER LOCAL REQUIREMENTS IS THE RESPONSIBILITY OF THE OWNER AND/OR OWNER'S REPRESENTATIVE.

4. REFLECTANCES VALUES FOR ROOMS ARE: CEILING 0.8, WALL 0.5 AND FLOOR 0.2 UNLESS OTHERWISE NOTED

5. REFLECTANCES VALUES FOR OBJECTS ARE 0.5; UNLESS OTHERWISE NOTED

CLIENT:



**PHOTOMETRIC REPORT**

PROJECT TITLE:

**50 the Driveway**

DATE:

2022-11-22

DRAWN BY:

KJB

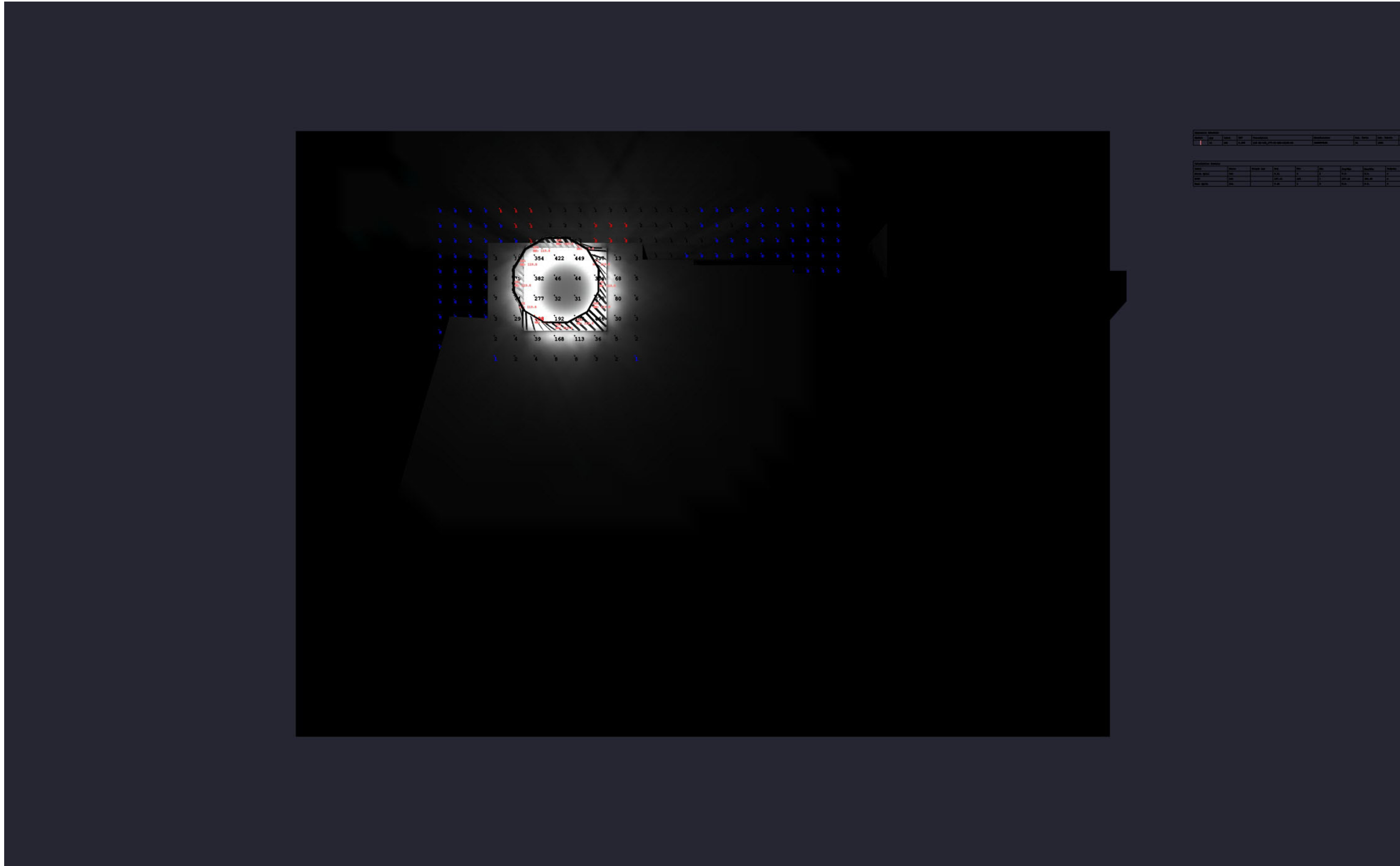
NOTES:

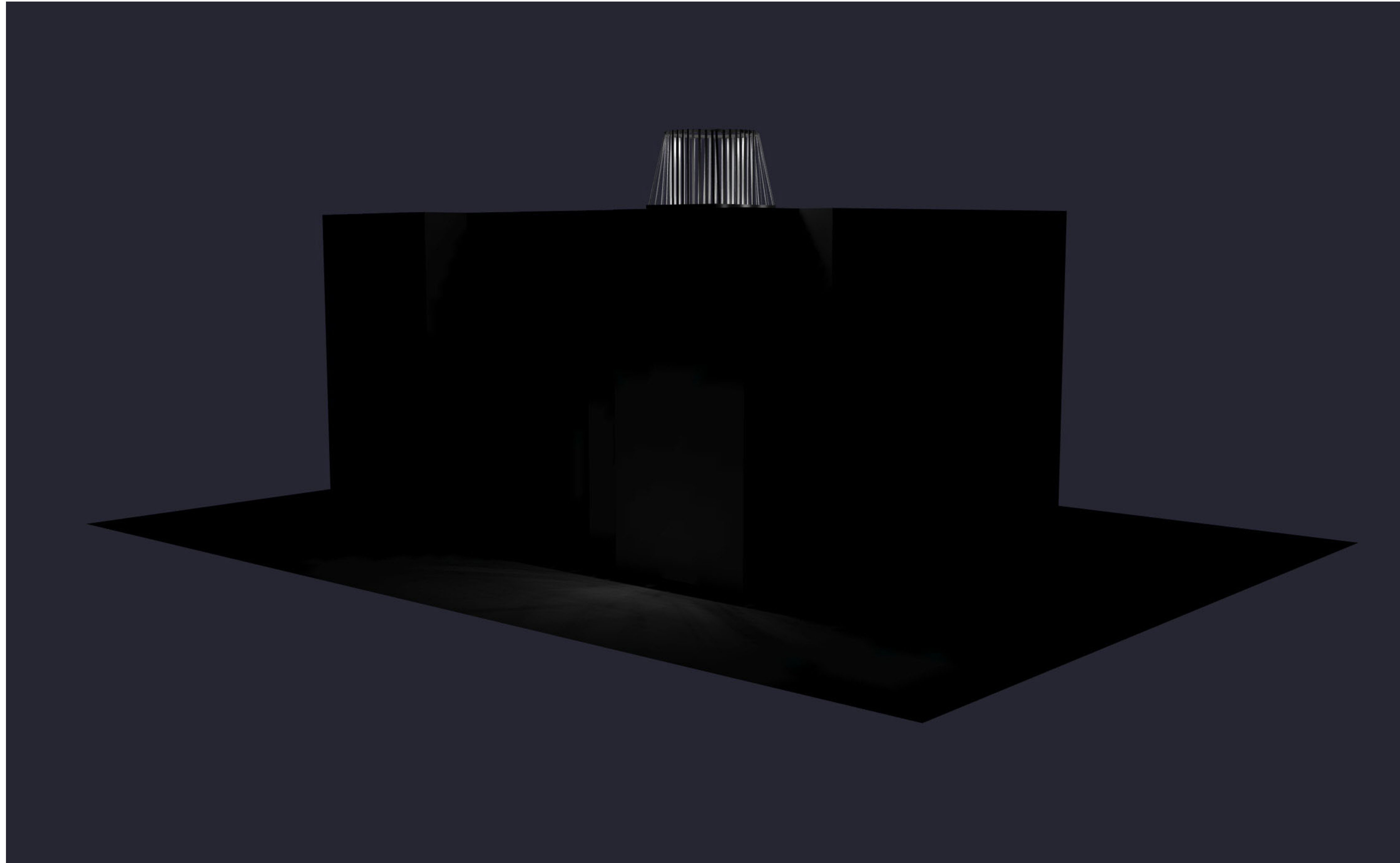
**PRELIMINARY STUDY  
FOR DISCUSSION**

NOTES:

1. THIS LIGHTING DESIGN IS BASED ON LIMITED INFORMATION SUPPLIED BY OTHERS TO BDA LIGHTING GROUP. SITE DETAILS PROVIDED HEREIN ARE REPRODUCED ONLY AS A VISUALIZATION AID. FIELD DEVIATIONS MAY SIGNIFICANTLY AFFECT PREDICTED PERFORMANCE. PRIOR TO INSTALLATION, CRITICAL SITE INFORMATION (POLE LOCATIONS, ORIENTATION, MOUNTING HEIGHT, ETC.) SHOULD BE COORDINATED WITH THE CONTRACTOR AND/OR SPECIFIER RESPONSIBLE FOR THE PRODUCT.
2. LUMINAIRE DATA IS TESTED TO INDUSTRY STANDARDS UNDER LABORATORY CONDITIONS. OPERATING VOLTAGE AND MANUFACTURING TOLERANCES OF LAMP, BALLAST, DRIVERS, AND LUMINAIRE MAY AFFECT FIELD RESULTS.
3. CONFORMANCE TO FACILITY CODE AND OTHER LOCAL REQUIREMENTS IS THE RESPONSIBILITY OF THE OWNER AND/OR OWNER'S REPRESENTATIVE.
4. REFLECTANCES VALUES FOR ROOMS ARE: CEILING 0.8, WALL 0.5 AND FLOOR 0.2 UNLESS OTHERWISE NOTED
5. REFLECTANCES VALUES FOR OBJECTS ARE 0.5; UNLESS OTHERWISE NOTED

CLIENT:





**PHOTOMETRIC REPORT**

PROJECT TITLE:

**50 the Driveway**

DATE:

2022-11-22

DRAWN BY:

KJB

NOTES:

**PRELIMINARY STUDY  
FOR DISCUSSION**

NOTES:

1. THIS LIGHTING DESIGN IS BASED ON LIMITED INFORMATION SUPPLIED BY OTHERS TO BDA LIGHTING GROUP. SITE DETAILS PROVIDED HEREIN ARE REPRODUCED ONLY AS A VISUALIZATION AID. FIELD DEVIATIONS MAY SIGNIFICANTLY AFFECT PREDICTED PERFORMANCE. PRIOR TO INSTALLATION, CRITICAL SITE INFORMATION (POLE LOCATIONS, ORIENTATION, MOUNTING HEIGHT, ETC.) SHOULD BE COORDINATED WITH THE CONTRACTOR AND/OR SPECIFIER RESPONSIBLE FOR THE PRODUCT.

2. LUMINAIRE DATA IS TESTED TO INDUSTRY STANDARDS UNDER LABORATORY CONDITIONS. OPERATING VOLTAGE AND MANUFACTURING TOLERANCES OF LAMP, BALLAST, DRIVERS, AND LUMINAIRE MAY AFFECT FIELD RESULTS.

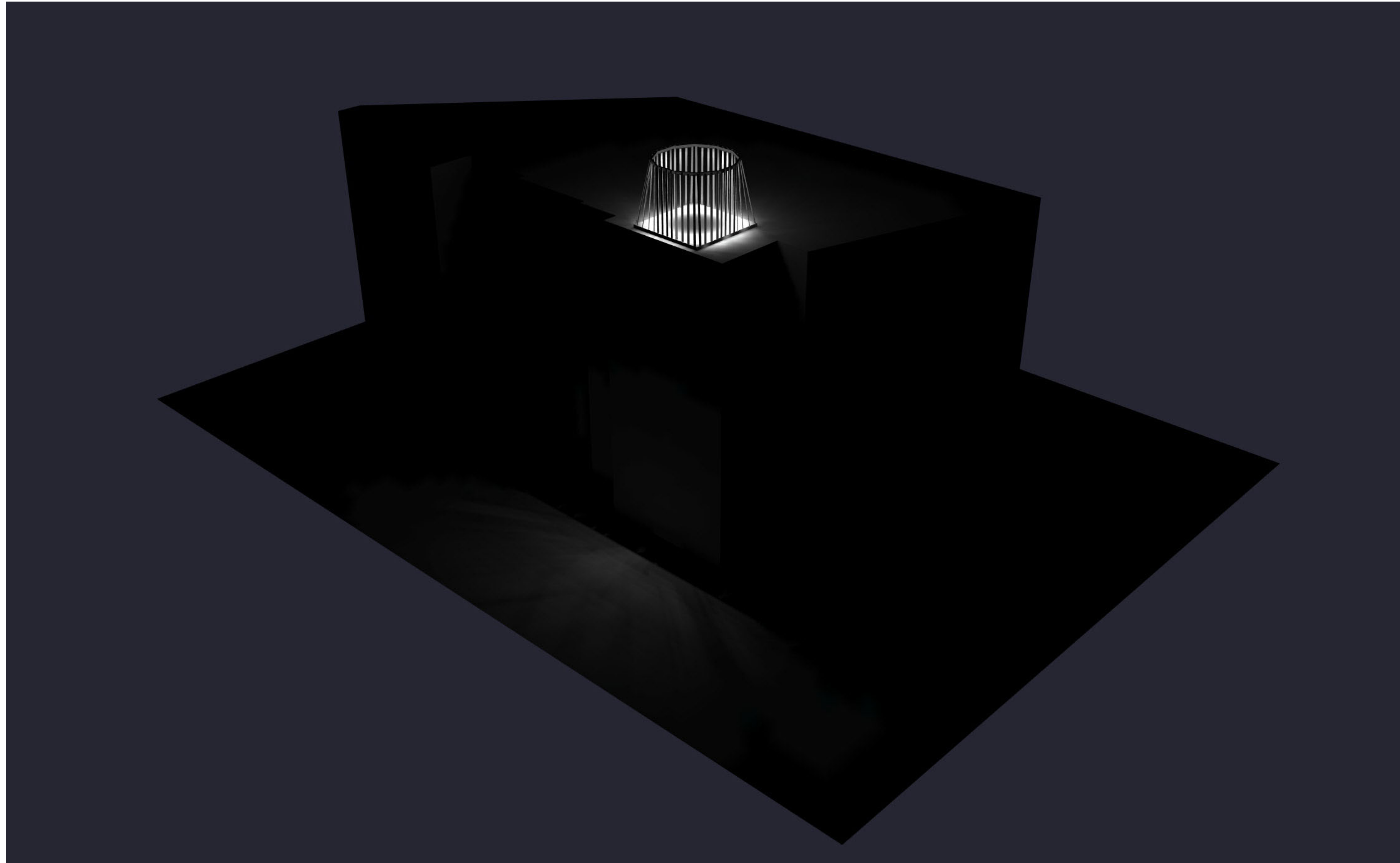
3. CONFORMANCE TO FACILITY CODE AND OTHER LOCAL REQUIREMENTS IS THE RESPONSIBILITY OF THE OWNER AND/OR OWNER'S REPRESENTATIVE.

4. REFLECTANCES VALUES FOR ROOMS ARE: CEILING 0.8, WALL 0.5 AND FLOOR 0.2 UNLESS OTHERWISE NOTED

5. REFLECTANCES VALUES FOR OBJECTS ARE 0.5; UNLESS OTHERWISE NOTED

CLIENT:





**PHOTOMETRIC REPORT**

PROJECT TITLE:

**50 the Driveway**

DATE:

2022-11-22

DRAWN BY:

KJB

NOTES:

**PRELIMINARY STUDY  
FOR DISCUSSION**

NOTES:

1. THIS LIGHTING DESIGN IS BASED ON LIMITED INFORMATION SUPPLIED BY OTHERS TO BDA LIGHTING GROUP. SITE DETAILS PROVIDED HEREIN ARE REPRODUCED ONLY AS A VISUALIZATION AID. FIELD DEVIATIONS MAY SIGNIFICANTLY AFFECT PREDICTED PERFORMANCE. PRIOR TO INSTALLATION, CRITICAL SITE INFORMATION (POLE LOCATIONS, ORIENTATION, MOUNTING HEIGHT, ETC.) SHOULD BE COORDINATED WITH THE CONTRACTOR AND/OR SPECIFIER RESPONSIBLE FOR THE PRODUCT.

2. LUMINAIRE DATA IS TESTED TO INDUSTRY STANDARDS UNDER LABORATORY CONDITIONS. OPERATING VOLTAGE AND MANUFACTURING TOLERANCES OF LAMP, BALLAST, DRIVERS, AND LUMINAIRE MAY AFFECT FIELD RESULTS.

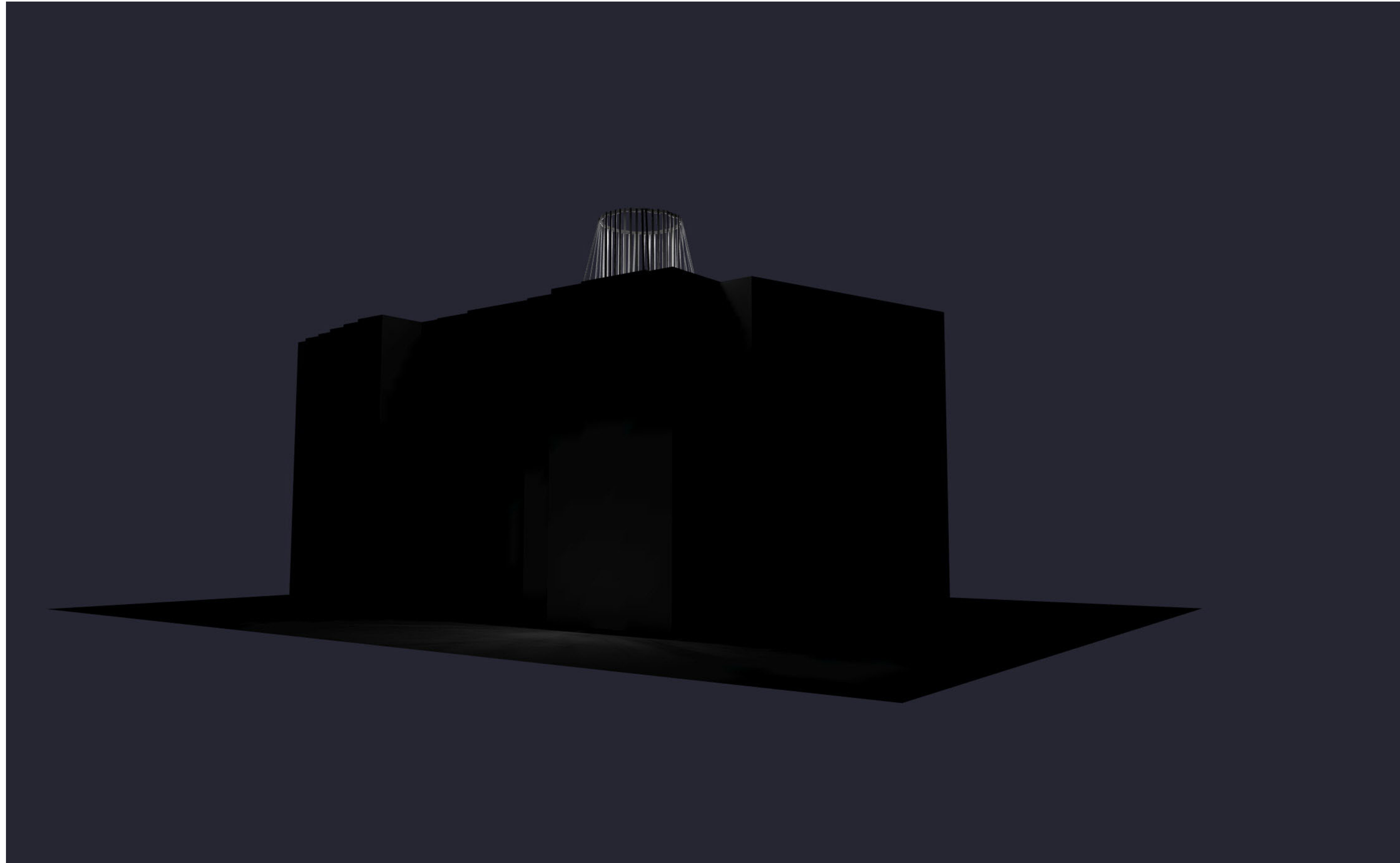
3. CONFORMANCE TO FACILITY CODE AND OTHER LOCAL REQUIREMENTS IS THE RESPONSIBILITY OF THE OWNER AND/OR OWNER'S REPRESENTATIVE.

4. REFLECTANCES VALUES FOR ROOMS ARE: CEILING 0.8, WALL 0.5 AND FLOOR 0.2 UNLESS OTHERWISE NOTED

5. REFLECTANCES VALUES FOR OBJECTS ARE 0.5; UNLESS OTHERWISE NOTED

CLIENT:





**PHOTOMETRIC REPORT**

PROJECT TITLE:

**50 the Driveway**

DATE:

2022-11-22

DRAWN BY:

KJB

NOTES:

**PRELIMINARY STUDY  
FOR DISCUSSION**

NOTES:

1. THIS LIGHTING DESIGN IS BASED ON LIMITED INFORMATION SUPPLIED BY OTHERS TO BDA LIGHTING GROUP. SITE DETAILS PROVIDED HEREIN ARE REPRODUCED ONLY AS A VISUALIZATION AID. FIELD DEVIATIONS MAY SIGNIFICANTLY AFFECT PREDICTED PERFORMANCE. PRIOR TO INSTALLATION, CRITICAL SITE INFORMATION (POLE LOCATIONS, ORIENTATION, MOUNTING HEIGHT, ETC.) SHOULD BE COORDINATED WITH THE CONTRACTOR AND/OR SPECIFIER RESPONSIBLE FOR THE PRODUCT.

2. LUMINAIRE DATA IS TESTED TO INDUSTRY STANDARDS UNDER LABORATORY CONDITIONS. OPERATING VOLTAGE AND MANUFACTURING TOLERANCES OF LAMP, BALLAST, DRIVERS, AND LUMINAIRE MAY AFFECT FIELD RESULTS.

3. CONFORMANCE TO FACILITY CODE AND OTHER LOCAL REQUIREMENTS IS THE RESPONSIBILITY OF THE OWNER AND/OR OWNER'S REPRESENTATIVE.

4. REFLECTANCES VALUES FOR ROOMS ARE: CEILING 0.8, WALL 0.5 AND FLOOR 0.2 UNLESS OTHERWISE NOTED

5. REFLECTANCES VALUES FOR OBJECTS ARE 0.5; UNLESS OTHERWISE NOTED

CLIENT:



**lumenpulse**<sup>™</sup>

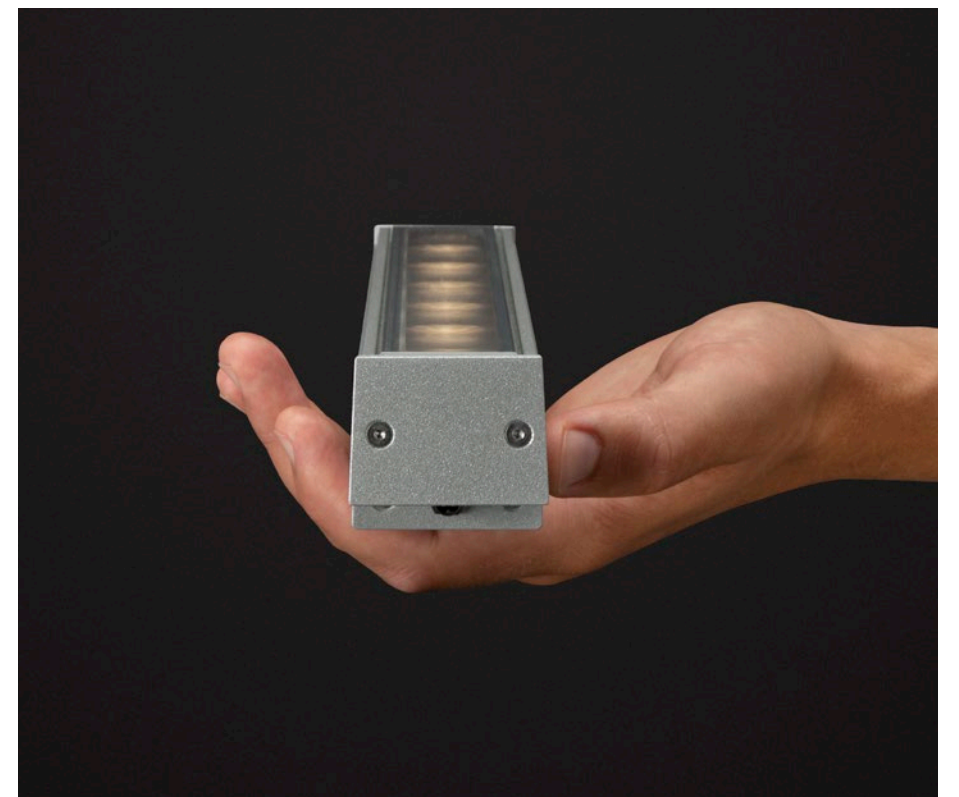


**lumenfacade nano**  
Hiding in Plain Sight



# Form Factor

The fixture itself may be hard to see, but the Lumenfacade Nano has been turning heads for some time. Since its introduction, Lumenfacade Nano has continually punched above its weight class. Now, with heightened performance, new wattages, CRI 90+, and multiple 3G vibration rated options, you genuinely get a small-scale premium fixture with full-scale features.



UW Population Health, Seattle, Washington, United States  
Lighting Designer: Blanca Lighting  
Photographer: Ryan Linton  
Products: Lumenfacade Nano Horizontal





## What's New Under the Hood

### GOOD THINGS, SMALL PACKAGE

The Lumenfacade Nano might be small, but it is mighty. With higher wattages and outputs, the Lumenfacade Nano has phenomenal reach with the form factor to be hidden in hard-to-reach places.

### REALLY GOOD VIBRATIONS

The durable Lumenfacade Nano's flexibility has increased to meet your wildest design dreams. Now, with 3G vibration-rated options, the Lumenfacade Nano can meet needs of even more exciting applications.

### PREMIUM PERFORMANCE

Lumenpulse's commitment to color quality is second to none and the Lumenfacade Nano upholds our dedication. On top of various colors, color temperatures, and static colors options, the Lumenfacade Nano is also available with color rendering capabilities of CRI 80+ and CRI 90+.

Up to  
**58,720 cd**  
1 fc at a distance of 242 ft.

## Full-Scale Features, Small-Scale Fixture

Offering a wealth of possibilities for architectural and commercial applications, the Lumenfacade Nano with its premium features can enhance every architecture, all the while hiding in plain sight.

### Big things, small package:

- NEW Higher wattages and outputs.
- NEW 3G Vibration-rated mounting options.
- NEW CRI 80+ and CRI 90+ color rendering.
- Minimal visibility in low-scale applications.
- Clean aesthetics to blend with any design.
- Architecturally attuned mountings.
- Optimal optics and optical accessories.



1. Lumenfacade Nano 2W 10°x60°    2. Lumenfacade Nano 4W Wallwash    3. Lumenfacade Nano 4W 10°x30°  
4. Lumenfacade Nano 7W 10°x30°    5. Lumenfacade Nano 7W 10°x10°



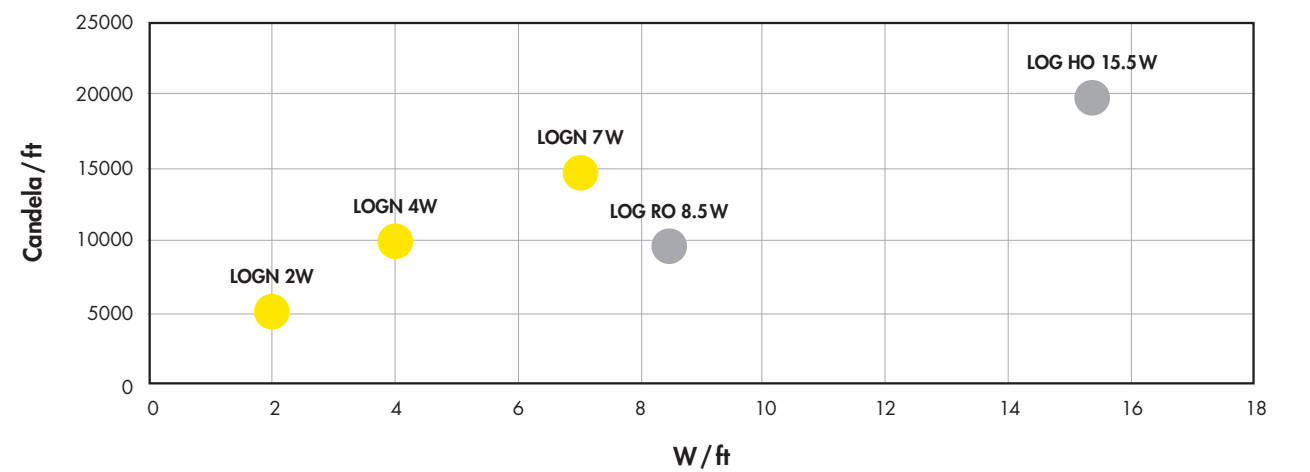
AMC Theater, Montclair, California, United States  
 Lighting Designer: Oculus Lighting Studio (Sarah Wang)  
 Photographer: Martin King  
 Products: Lumenfacade Nano 4W RGBW30K

# Performance-Oriented

Don't be fooled. Its compact form by no means limits the power and performance of the Lumenfacade Nano. This is a comparable delivery to the Lumenfacade RO, but using only half the wattage.

## 7W Fixture Outperforms 8.5W Lumenfacade

Typical Grazing Application: 8° x 8° (4000K, 1 ft)  
 Candelas for Maximum Reach



# Light That Keeps On Giving

The multi-faceted Lumenfacade Nano showcases Lumenpulse's unparalleled approach to facade lighting. Easily configurable, this luminaire will grant you a toolbox brimming with features and solutions. With over 4,000,000 possible configurations, you can select between a variety of lengths, CCTs, and dynamic offering, tailoring the Nano to fit your design needs and to integrate seamlessly with the architecture.

## Lengths <sup>1</sup>



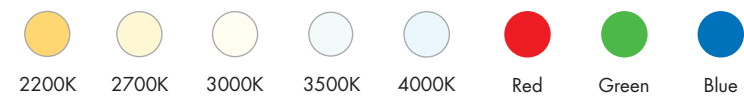
## Wattage

2W/ft 4W/ft 7W/ft 8W/ft

## Color Rendering

CRI 80+ CRI 90+

## Colors and Color Temperatures



## Controls

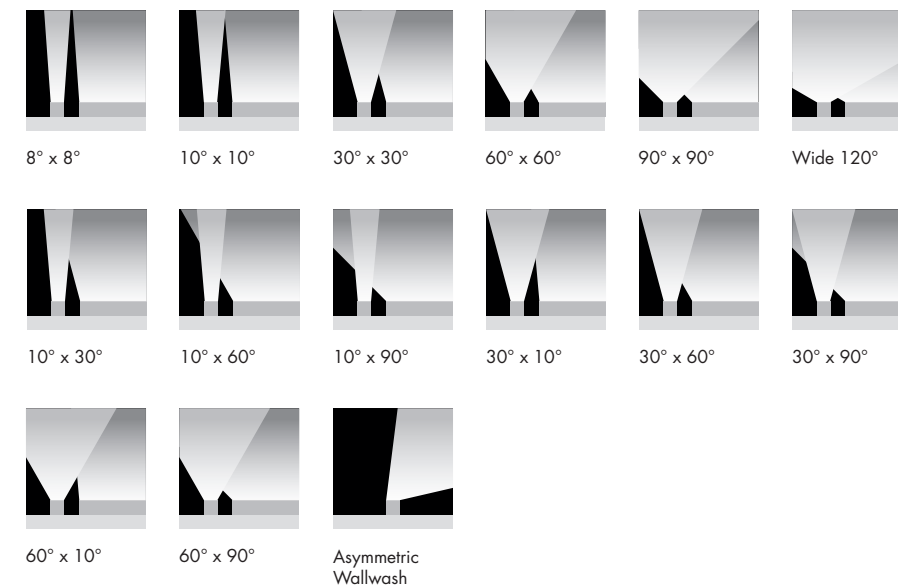
ON/OFF 0-10V DALI DALI-2 TYPE 8 DMXrdm DTW

## Certifications and Ratings

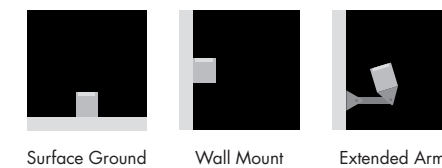
cULus CE RoHS IK08 IP66 CRC 3GV\*

<sup>1</sup> Nominal lengths.  
\*Available on select mounting options.

## Optics



## Mountings



## Finishes



Options vary according to model. Consult specification sheets.

# Futureproof

## Built to Last

No power supply inside the fixtures means they will last as long as the LEDs keep shining.

## Easy to Install, Easy to Maintain

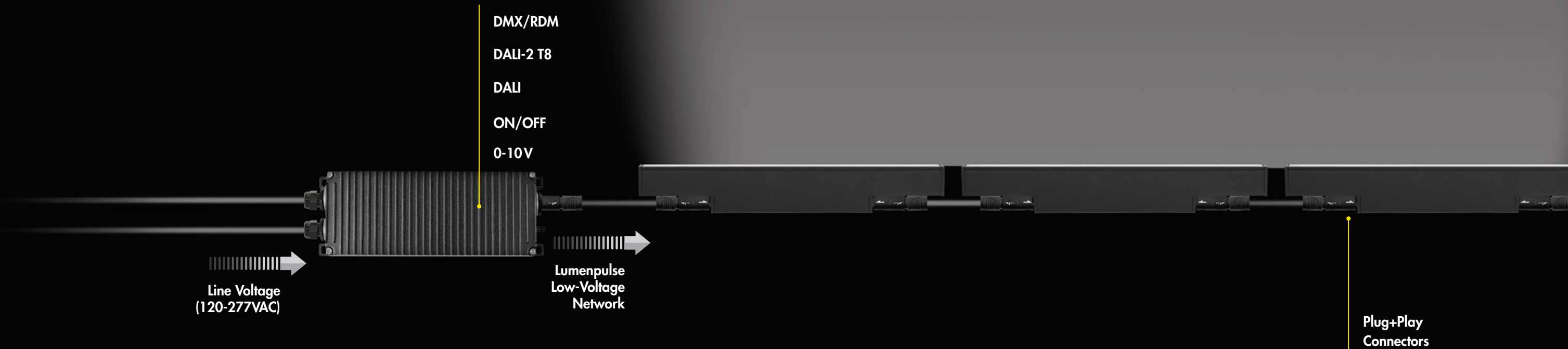
A single source of power at the beginning of the run makes installation and service a snap.

## Safe, Connected Design

The powered by Lumengrid, 48V DC low-voltage system is safe and flexible.

## Control Ready, Control Upgradeable

Control-agnostic architecture means you can add, change, or upgrade controls later—all without changing out the fixtures.





# Bold Color, Small Footprint

It's time to take your signature design to new heights, no matter how small a footprint for fixtures is available. Because Lumengrid powers the Lumenfacade Nano, your project can enjoy the benefits of harmonized CCT and dynamic color changing and white lighting. Your projects and onlookers will thank you.



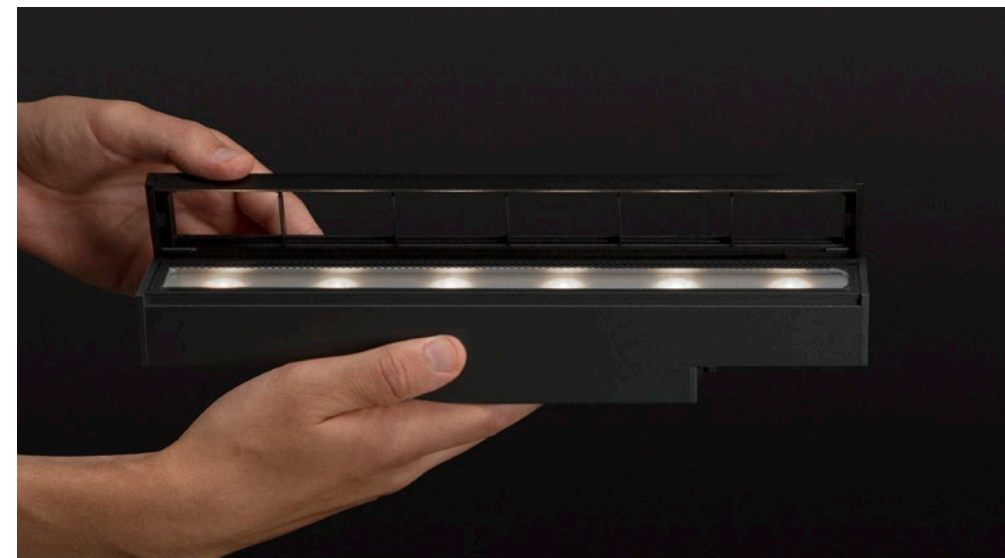


# Fast Is Even Faster and Foolproof

- The Lumenfacade Nano's installation process is reliably simple. There's a specialized mounting system for every architecture.
- The Lumenfacade Nano's quick-joining system simplifies installation, allowing a universal power flow. It's literally a snap to install and to daisy chain luminaire runs from any end of the fixture.
- With only one type of fixture cable for all your needs, wiring mishaps are a thing of the past.
- The Lumenfacade Nano optical accessories are a natural extension of its design. The tool-free installation of accessories lets you add louvers or visors on-site.



**Tool-Free  
Installation**



Waitzer Hall, Norfolk, Virginia, United States  
Photographer: Sterling E. Stevens  
Products: Lumenfacade Nano



## Hiding in Plain Sight

Nothing says "perfect fit" like the Lumenfacade Nano. No matter where you want it, no matter what the project, there's a Nano designed especially for you.



**Sales Offices and  
Manufacturing Facilities**

**Corporate Headquarters**

1220 Marie-Victorin Blvd.  
Longueuil, QC  
J4G 2H9 Canada

T +1.877.937.3003  
T +1.514.937.3003  
F +1.514.937.6289

**Boston, United States**

14 Beacon Street, Suite 301  
Boston, MA  
02108 United States

T +1.877.937.3003  
T +1.617.307.5700  
F +1.617.350.9912

