

TECHNICAL MEMORANDUM

DATE February 8, 2022

Project No. 22513918

TO Angela Mariani, Development Planner
Nautical Lands Group

CC Heather Melcher, Golder

FROM Gwendolyn Weeks, Project Ecologist

EMAIL gweeks@golder.com

BUTTERNUT SERVICES, 20 CEDAROW COURT, OTTAWA, ONTARIO

1.0 INTRODUCTION

Golder Associates Ltd. (Golder) was retained by Nautical Lands Group (NLG) to complete a search for butternut (*Juglans cinerea*) at 20 Cedarow Court, City of Ottawa, Ontario (the Site; Figure 1). Golder previously completed a Tree Conservation Report for the Site, which did not include lands outside of the proposed development envelope (the Setback Area) as those areas had been assessed by the previous owner, and a permit under the *Endangered Species Act* (ESA) (Ontario 2007) had been obtained for butternut trees located in that area. The City of Ottawa requested that a search be conducted in the Setback Area, focusing on locating butternut individuals that may have grown since the previous permit was obtained (i.e., new seedlings or saplings). Any such newly generated seedlings or saplings would require consideration under the ESA.

This technical memorandum outlines the methods and results of Golder's site investigation.

2.0 METHODS

A Golder biologist completed a one-day site investigation on January 14, 2022 to search for new butternut seedlings or saplings that may have grown in the Setback Area since the existing ESA permit was granted. This approach was confirmed as being appropriate by City of Ottawa staff during a call on January 12, 2022. The search area included the entire Site plus 25 m beyond the Site boundary but focused on the Setback Area. Golder intended to flag any new butternut seedlings or saplings in the field with flagging tape and take a coordinate using a hand-held GPS unit. Snow cover during the site investigation ranged from 0 – 5 cm, making for easy detection of butternut seedlings and saplings.

3.0 RESULTS

No butternut seedlings or saplings were observed during the site investigation. All butternut observed were associated with the previous ESA permit (i.e., in the location of the previously identified butternut trees, and too large to have grown up since the ESA permit was granted).

4.0 CONCLUSIONS

As no new butternut trees were observed on the Site, or within 25 m of proposed works, there are no requirements for notification or permitting under the ESA associated with the proposed works.

5.0 LIMITATIONS AND USE OF REPORT

This report was prepared for Nautical Lands Group. The technical memorandum is based on data and information collected by Golder, and reflects the conditions within the Site at the time of the site investigation, supplemented by data obtained by Golder from external sources as described in this report. Golder has exercised reasonable skill, care and diligence to assess the external data acquired during the preparation of this assessment, but makes no guarantees or warranties as to the accuracy, currency or completeness of this information. This report is based upon and limited by circumstances and conditions acknowledged herein, and upon information available at the time of authoring. Any use which a third party makes of this report, or any reliance on, or decisions to be made based on it, are the responsibilities of such third parties. Golder accepts no responsibility for damages, if any, suffered by any third party as a result of decisions made or actions taken based on this report.

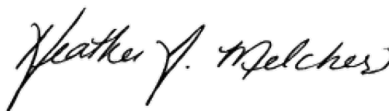
6.0 CLOSURE

We trust this technical memorandum meets your current requirements. Should you have any questions please contact the undersigned.

Golder Associates Ltd.



Gwendolyn Weeks, H.B.Sc.Env.
Ecologist

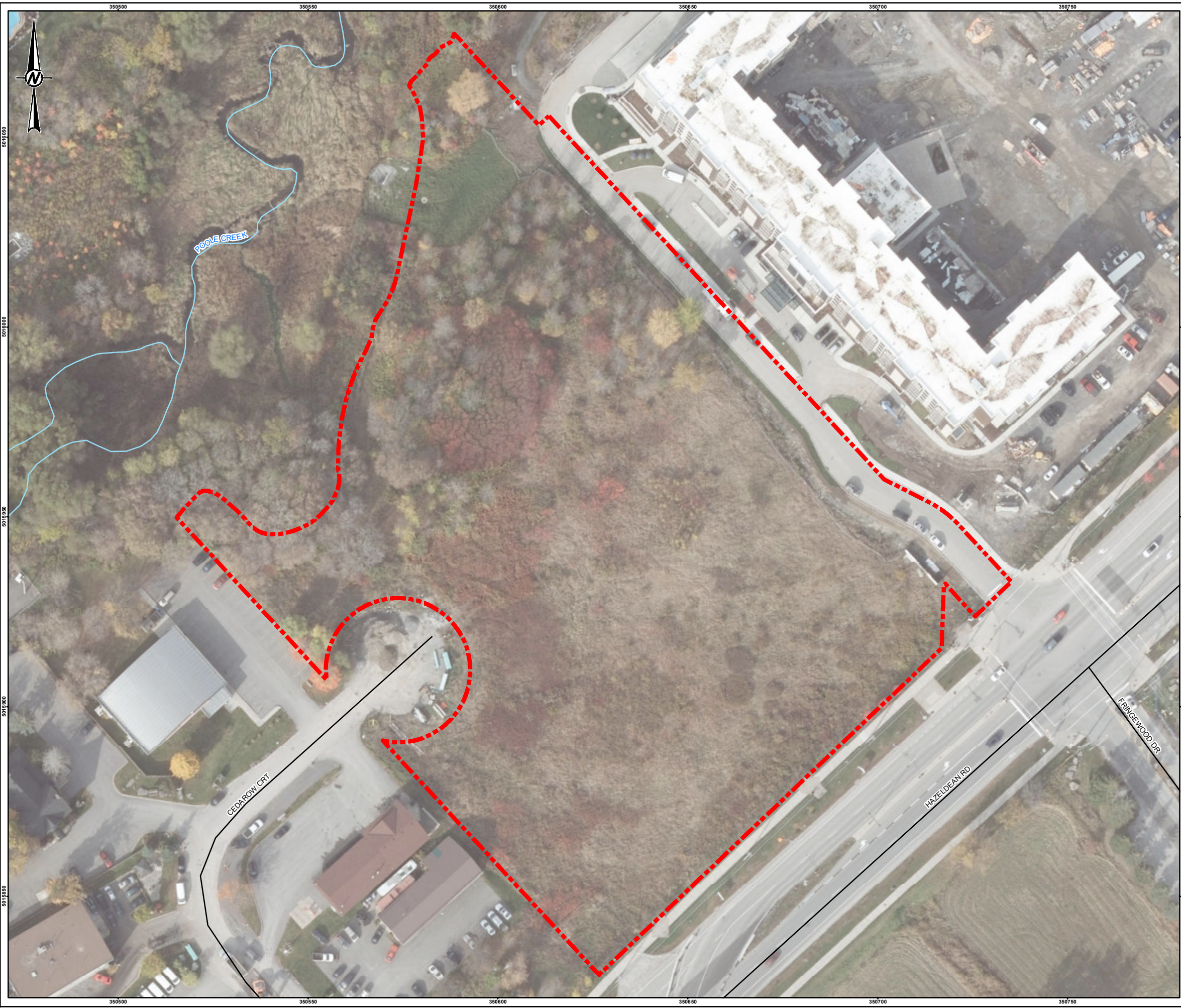


Heather Melcher, M.Sc.
Senior Ecologist, Principal

GAW/HM/sg

[https://golderassociates.sharepoint.com/sites/158339/project files/6 deliverables/22513918_20 cedarow court butternut services_8feb2022.docx](https://golderassociates.sharepoint.com/sites/158339/project%20files/6%20deliverables/22513918_20%20cedarow%20court%20butternut%20services_8feb2022.docx)

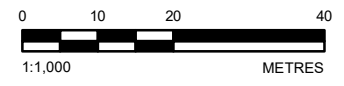
Attachments: Figure 1 – Site Plan



SCALE 1:80,000

- LEGEND**
- ROADWAY
 - WATERCOURSE
 - ▭ SITE

- NOTE(S)**
1. ALL LOCATIONS ARE APPROXIMATE
- REFERENCE(S)**
1. LAND INFORMATION ONTARIO (LIO) DATA PRODUCED BY GOLDER ASSOCIATES LTD. UNDER LICENCE FROM ONTARIO MINISTRY OF NATURAL RESOURCES, © QUEENS PRINTER 2018
 2. SERVICE LAYER CREDITS: © OPENSTREETMAP (AND) CONTRIBUTORS, CC-BY-SA
 3. PROJECTION: TRANSVERSE MERCATOR, DATUM: NAD 83, COORDINATE SYSTEM: MTM ZONE 9, VERTICAL DATUM: CGVD28



CLIENT
NAUTICAL LANDS GROUP

PROJECT
BUTTERNUT SERVICES
20 CEDAROW COURT, OTTAWA, ONTARIO

TITLE
SITE PLAN

CONSULTANT	YYYY-MM-DD	2022-01-17
	DESIGNED	---
	PREPARED	BR/JEM
	REVIEWED	GAW
	APPROVED	HM

PROJECT NO. 22513918 CONTROL 0001 REV. 0 FIGURE 1

Path: N:\Active\Spatial_IM\Nautical_Lands_Group\20_Cedarow_Ct_Site\view\99_PROJ\22513918_NLG_NEL\001_Butternut_Services\22513918-001-HN-001.mxd

IF THIS MEASUREMENT DOES NOT MATCH WHAT IS SHOWN, THE SHEET SIZE HAS BEEN MODIFIED FROM: 28mm