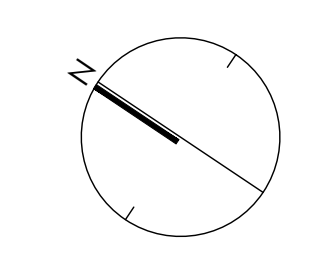


HALF MOON BAY SOUTH PHASE 8



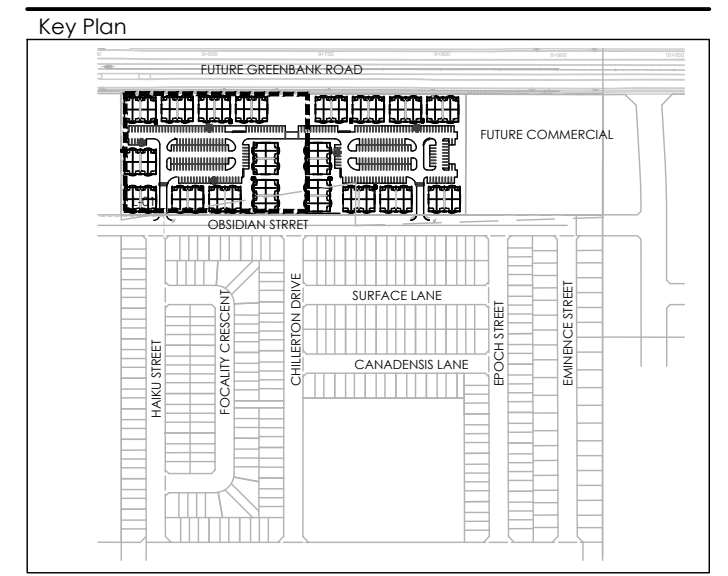
LIST OF DRAWINGS:

- L-01 - LANDSCAPE PLAN
- L-02 - LANDSCAPE PLAN
- D-01 - DETAILS



KEYMAP
1:750

Contractor shall check all dimensions on the work and report any discrepancy to the Landscape Architect before proceeding. All drawings and specifications are the property of the Landscape Architect and must be returned at the completion of the work. This drawing is not to be used for construction until signed by the Landscape Architect.



LEGEND

PROPERTY LINE

FENCING

- WASTE ENCLOSURE FENCE
- PEDESTRIAN ACCESS GATE

PLANTING

- LARGE DECIDUOUS TREE
- DECIDUOUS SHRUB
- CONIFEROUS SHRUB
- GRASSES/PERENNIALS
- SODDING
- SHRUB BED

PAVING

- ASPHALT PAVING
- CIP CONCRETE PAVING
- HEAVY DUTY CONCRETE PAVING
- RIVERSTONE PAVING
- UNIT PAVING

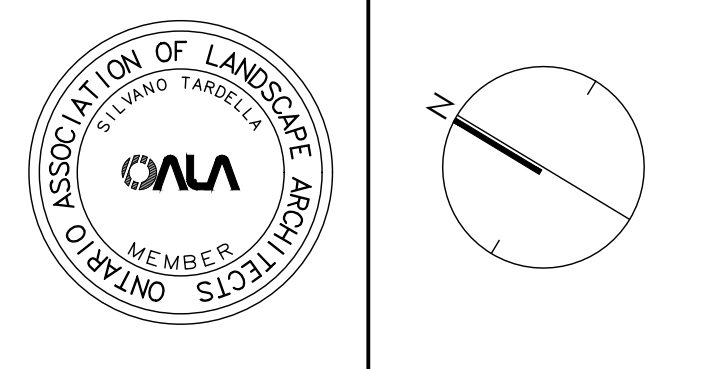
PLANTING KEY

- TREE SPECIES QUANTITY
- SHRUB SPECIES QUANTITY

DETAIL KEY

- DETAIL NO. SHEET NO.

No.	Description	Date
5	Issued for Second Submission	DEC 04/22
4	Issued for Second Submission	NOV 24/22
3	Issued for Second Submission	NOV 18/22
2	Re-issued for First Submission	MAR 21/22
1	Issued for First Submission	NOV 2021
No.	Description	Date



NAK
design strategies

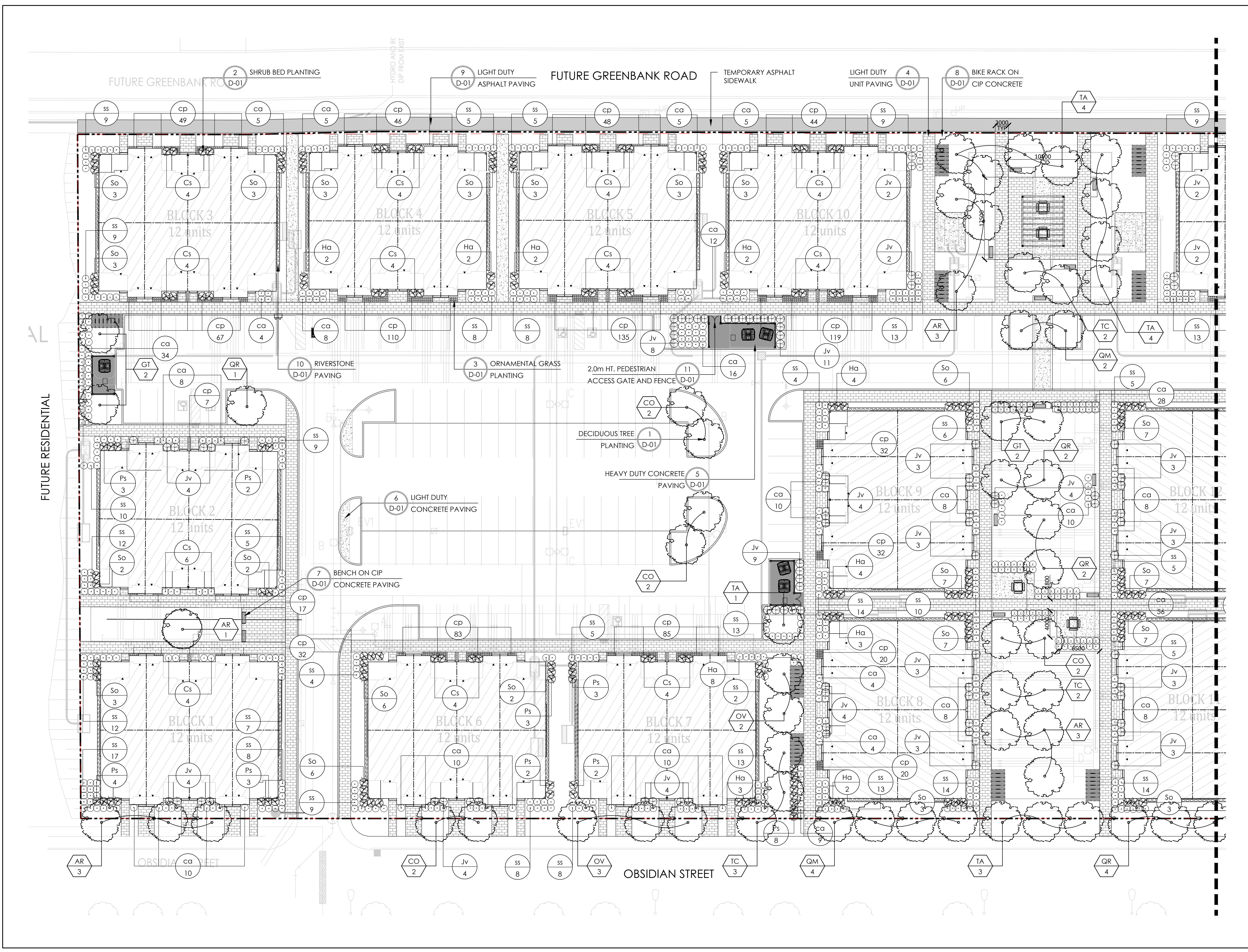
1285 WELLINGTON STREET WEST, OTTAWA, ON K1Y 3A8 CANADA
T 613.237.2345 F 613.237.4423 NAKDESIGNSTRATEGIES.COM

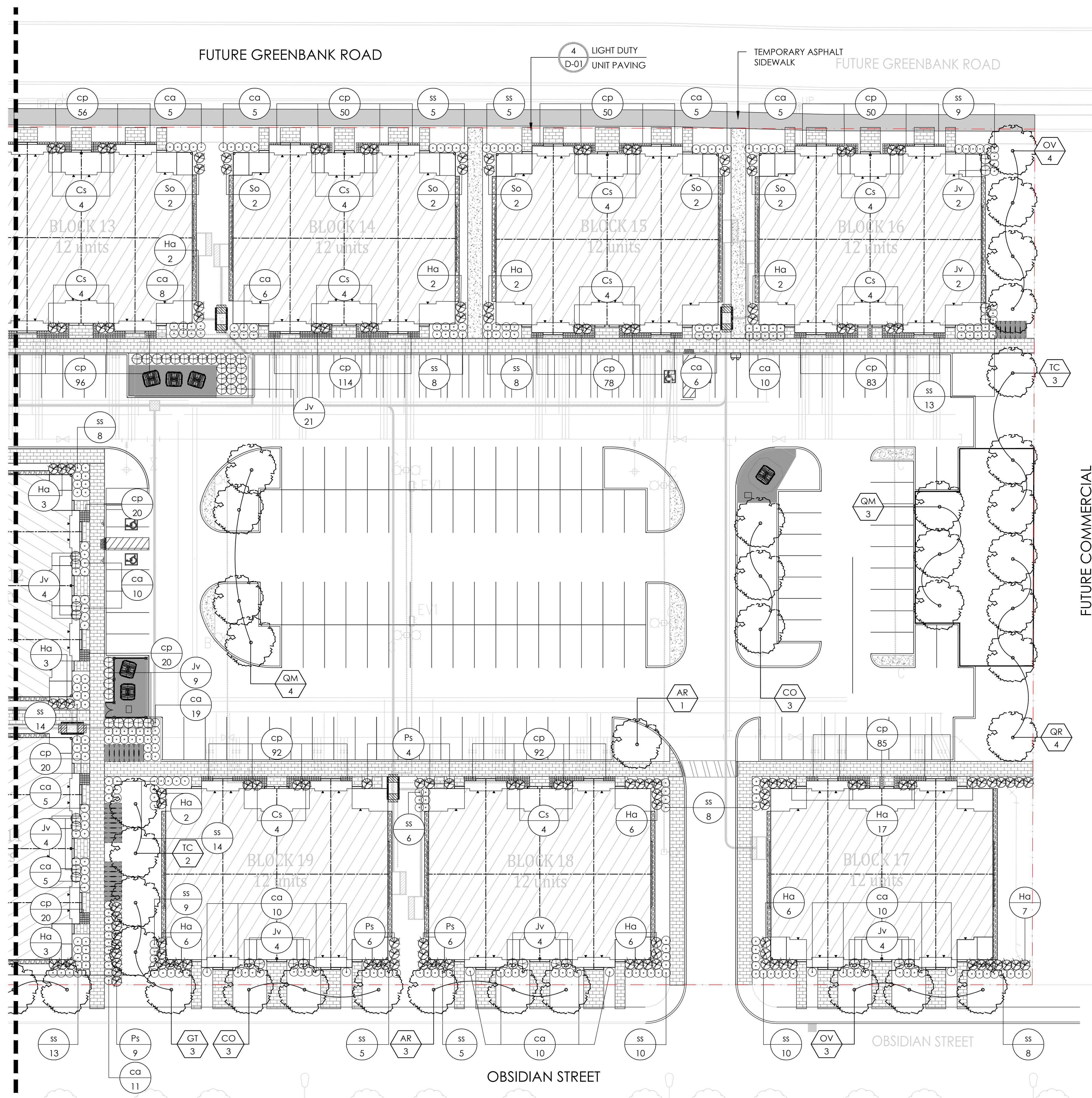
**HALF MOON BAY SOUTH
PHASE 8**

Title: LANDSCAPE PLAN

Date: DEC 2021
Scale: 1:250
Drawn: TY
Checked: TM
Job No.: 20-210

Sheet: **L-01**





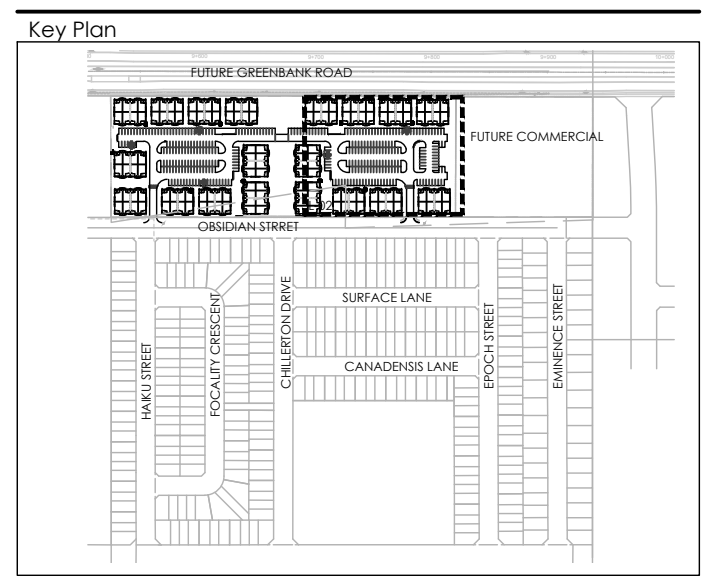
- GENERAL NOTES:**
1. ACER RUBRUM, CELTIS OCCIDENTALIS, AND QUERCUS RUBRA TO BE SPRING DUG SPECIMENS AND PLANTED IN THE SPRING ONLY.
 2. THE LOCATION OF THE TREES SHOWN ON THIS PLAN IS APPROXIMATE AND SHALL NOT BE SCALED FROM THIS DRAWING. THIS PLAN MUST BE READ IN CONJUNCTION WITH THE APPROVED CUP AND CITY CROSS SECTIONS.
 3. CONTRACTOR SHALL ENSURE THAT ALL UTILITY LOCATIONS ARE OBTAINED PRIOR TO ANY EXCAVATION FOR LANDSCAPING.
 4. LOCATION OF ALL PLANT MATERIALS TO BE STAKED BY THE CONTRACTOR AND VERIFIED IN THE FIELD BY LANDSCAPE ARCHITECT & CITY OF OTTAWA PRIOR TO THE EXCAVATION OF PITS.
 5. ALL PLANT MATERIAL SHALL BE NURSERY GROWN STOCK UNLESS OTHERWISE NOTED.
 6. TREES TO HAVE A MINIMUM 1800 CLEAR STEM ABOVE GRADE.
 7. PLACE SOD ON A MINIMUM 150mm TOPSOIL.
 8. CONTRACTOR TO MAKE GOOD ALL EXISTING AREAS DAMAGED BY HIS WORK TO THE SATISFACTION OF THE CITY OF OTTAWA.
 9. THE CITY WILL BE NOTIFIED IF ANY TREES CANNOT BE LOCATED OR PLANTED DUE TO CONFLICTS WITH UTILITIES OR DRIVEWAYS. THE REQUIRED TREES NOT PLANTED ARE SUBJECT TO TREE BANKING. THE FINAL NUMBER OF TREES TO BE BANKED WILL BE DETERMINED BY THE CITY FOLLOWING ALL PLANTINGS.
 10. ALL PLANT MATERIAL SHALL BE WARRANTIED FOR TWO YEARS FROM THE DATE OF PERFORMANCE ACCEPTANCE AS DETERMINED BY THE CITY OF OTTAWA.
 11. PERIODIC REVIEWS OF PLANTING SHALL BE CARRIED OUT BY THE LANDSCAPE ARCHITECT.
 12. PLANTINGS TO BE STAKED FOR APPROVAL PRIOR TO CONSTRUCTION

- PLANTING NOTES:**
1. CONTRACTOR TO VERIFY LOCATION OF ALL SERVICES PRIOR TO ANY EXCAVATION.
 2. LOCATIONS OF ALL PLANT MATERIALS TO BE STAKED BY THE CONTRACTOR AND VERIFIED IN THE FIELD BY LANDSCAPE ARCHITECT PRIOR TO THE EXCAVATION OF PITS.
 3. ALL PLANT MATERIAL SHALL BE NURSERY GROWN STOCK UNLESS OTHERWISE NOTED.
 4. DECIDUOUS TREES TO HAVE A MINIMUM 1800 CLEAR STEM ABOVE GRADE.
 5. ALL PLANT MATERIAL SHALL BE WARRANTIED FOR TWO YEARS FROM THE DATE OF PERFORMANCE ACCEPTANCE AS DETERMINED BY THE LANDSCAPE ARCHITECT.
 6. ALL STEEL T-BARS TO BE REMOVED AT THE ONE YEAR INTERIM INSPECTION UNLESS OTHERWISE DIRECTED BY THE LANDSCAPE ARCHITECT.
 7. CONTRACTOR TO MAKE GOOD ALL EXISTING AREAS DAMAGED BY HIS WORK TO THE SATISFACTION OF THE LANDSCAPE ARCHITECT.
 8. PERIODIC REVIEWS OF PLANTING SHALL BE CARRIED OUT BY THE LANDSCAPE ARCHITECT.
 9. ANY PROPOSED SUBSTITUTIONS OF PLANT SPECIES SHALL BE MADE WITH PLANTS OF EQUIVALENT OVERALL FORM, HEIGHT, BRANCHING HABIT, FLOWER, LEAF, COLOR, FRUIT AND CULTURE AND ONLY AFTER APPROVAL OF THE LANDSCAPE ARCHITECT.

- SHRUB NOTES:**
1. PLACE THE SHRUB AS UPRIGHT AS POSSIBLE, INCLUDING ON SLOPES.
 2. PLANT SHRUBS AT THE PROPER DEPTH AS INDICATED ON THE DRAWINGS.
 3. PACK THE SOIL WELL AROUND THE PLANT BASE TO REMOVE AIR POCKETS, BUT DO NOT COMPACT SOIL. PRESS SOIL GENTLY BUT FIRMLY TO PREVENT SHOCKING THE ROOTS.
 4. PLACE SPECIES ACCORDING TO THE QUANTITIES AND SPACING AS INDICATED ON THE DRAWINGS.
 5. PLANT SHRUBS AT THE PROPER DEPTH THE ROOT COLLARS SHOULD BE AT GROUND LEVEL.
 6. MULCH THE SOIL SURFACE AS INDICATED ON DRAWINGS.
 7. WATER PLANTS THOROUGHLY FOLLOWING PLANTING.
 8. REFER TO SPECIFICATIONS FOR MAINTENANCE REQUIREMENTS.

- SOD NOTES:**
1. SODDED AREAS SHALL HAVE A MINIMUM 150mm TOPSOIL.
 2. FIRM THE SOIL BY GENTLY TAMPING OR ROLLING THE TOPSOIL. DO NOT COMPACT THE SOIL. EXCESSIVE FORCE WILL DESTROY THE SOIL STRUCTURE AND INHIBIT GERMINATION.
 3. CUT THE GRASS TO 50mm WHENEVER IT REACHES THE HEIGHT OF 70mm. REMOVE CLIPPINGS THAT WILL SMOTHER GRASS.
 4. SODDED AREAS WILL BE ACCEPTED BY THE PROJECT MANAGER FOLLOWING PERFORMANCE ACCEPTANCE PROVIDED:
 - SEEDS ARE PROPERLY ESTABLISHED.
 - TURF IS FREE OF DEAD SPOTS AND WEEDS.
 - NO SURFACE SOIL IS VISIBLE WHEN GRASS HAS BEEN CUT TO A HEIGHT OF 50mm.
 - TURF AREAS HAVE BEEN CUT NO LESS THAN TWICE, THE LAST CUT BEING CARRIED OUT WITHIN 24 HOURS PRIOR TO THE ACCEPTANCE INSPECTION.

KEY	BOTANICAL NAME	COMMON NAME	QUANTITY	SIZE	REMARKS
DECIDUOUS TREES					
AR	ACER RUBRUM	RED MAPLE	14	50mm CAL.	B&B / W.B.
CO	CELTIS OCCIDENTALIS	HACKBERRY	14	50mm CAL.	B&B / W.B.
GT	GEDITSIA TRI. VAR. INERMIS	HONEYLOCUST 'IMPERIAL'	7	50mm CAL.	B&B / W.B.
OV	OSTRYA VIRGINIANA	IRONWOOD	12	50mm CAL.	B&B / W.B.
QM	QUERCUS MACROCARPA	BURR OAK	13	50mm CAL.	B&B / W.B.
QR	QUERCUS RUBRA	RED OAK	13	50mm CAL.	B&B / W.B.
TA	TILIA AMERICANA	BASSWOOD	12	50mm CAL.	B&B / W.B.
TC	TILIA CORDATA 'CORINTHIAN'	CORINTHIAN LINDEN	12	50mm CAL.	B&B / W.B.
DECIDUOUS SHRUBS					
Cs	CORNUS SERICA 'KELSEY'	KELSEY DOGWOOD	94	3 GAL.	POTTED
Ha	HYDRANGEA ABORESCENS 'ANNABELLE'	ANNABELLE HYDRANGEA	110	3 GAL.	POTTED
Ps	PHYLADELPHUS X 'SNOWBELLE'	SNOWBELLE MOCKORANGE	57	3 GAL.	POTTED
So	SORBARIA SORBIFOLIA	FALSE SPIREA	107	3 GAL.	POTTED
CONIFEROUS SHRUBS					
Jv	JUNIPERUS VIRGINIANA 'BLUE ARROW'	BLUE ARROW JUNIPER	137	3 GAL.	POTTED
GRASSES/PERENNIALS					
ca	CALAMAGROSTIS X ACUTIFLORA 'KARL FOERSTER'	KARL FOERSTER FEATHER REED GRASS	405	1 GAL.	POTTED
cp	CAREX PENSYLVANICA	OAK SEDGE	1932	1 GAL.	POTTED
ss	SCHIZACHYRIUM SCOPARIUM	LITTLE BLUESTEM	478	1 GAL.	POTTED



LEGEND

--- PROPERTY LINE

FENCING

--- WASTE ENCLOSURE FENCE

M PEDESTRIAN ACCESS GATE

PLANTING

○ LARGE DECIDUOUS TREE

○ DECIDUOUS SHRUB

○ CONIFEROUS SHRUB

○ GRASSES/PERENNIALS

□ SODDING

□ SHRUB BED

PAVING

ASPHALT PAVING

CIP CONCRETE PAVING

HEAVY DUTY CONCRETE PAVING

RIVERSTONE PAVING

UNIT PAVING

PLANTING KEY

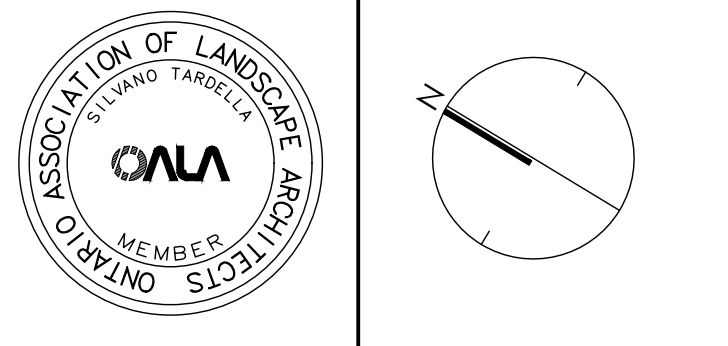
XX/00 TREE SPECIES QUANTITY

XX/00 SHRUB SPECIES QUANTITY

DETAIL KEY

I/D1 DETAIL NO. SHEET NO.

No.	Description	Date
5	Issued for Second Submission	DEC 06/22
4	Issued for Second Submission	NOV 24/22
3	Issued for Second Submission	NOV 18/22
2	Re-Issued for First Submission	MAR 21/22
1	Issued for First Submission	NOV 2021



NAK design strategies

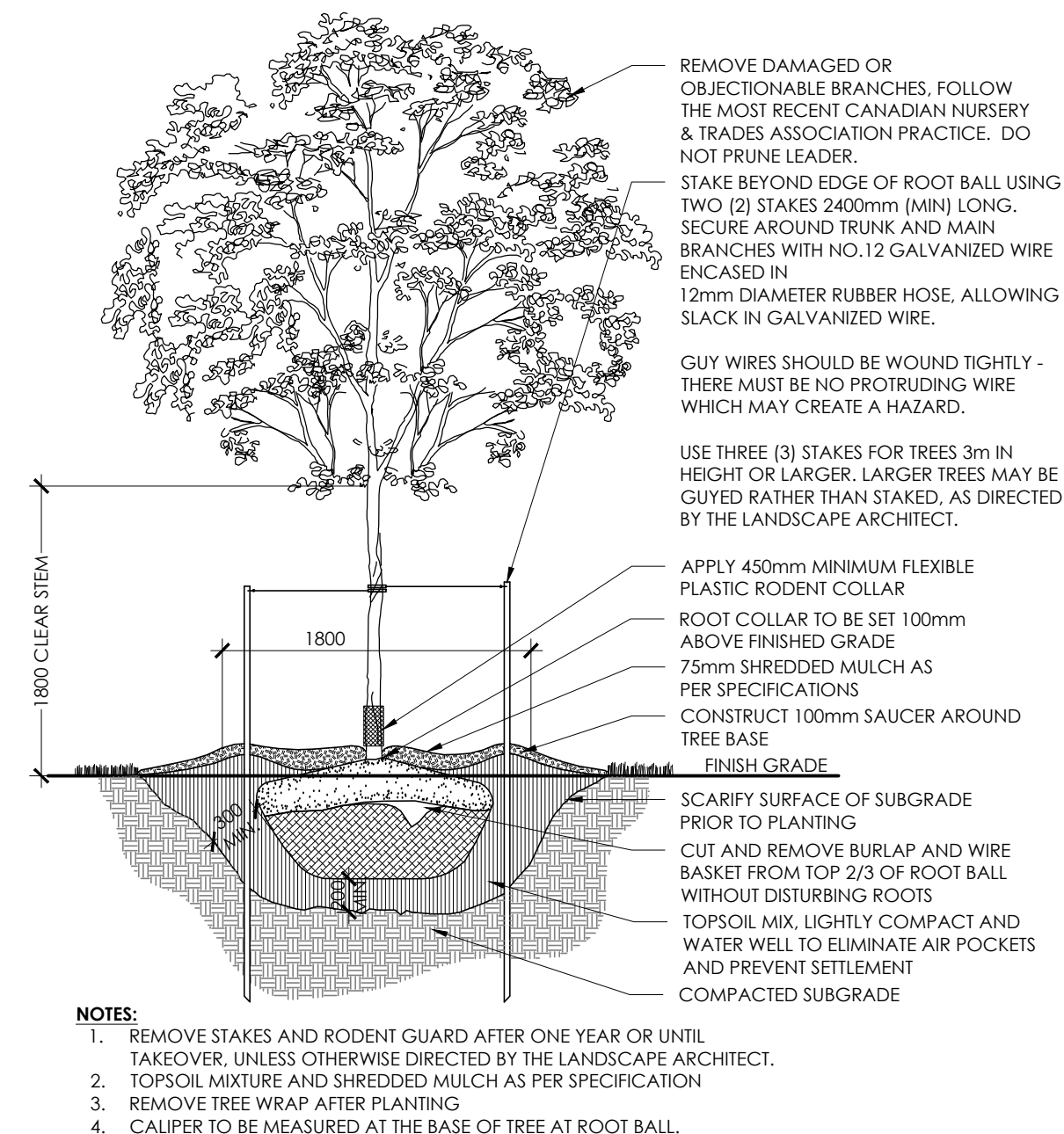
1285 WELLINGTON STREET WEST, OTTAWA, ON K1Y 3A8 CANADA
 T 613.237.2346 F 613.237.4423 NAKDESIGNSTRATEGIES.COM

HALF MOON BAY SOUTH PHASE 8

Title: LANDSCAPE PLAN

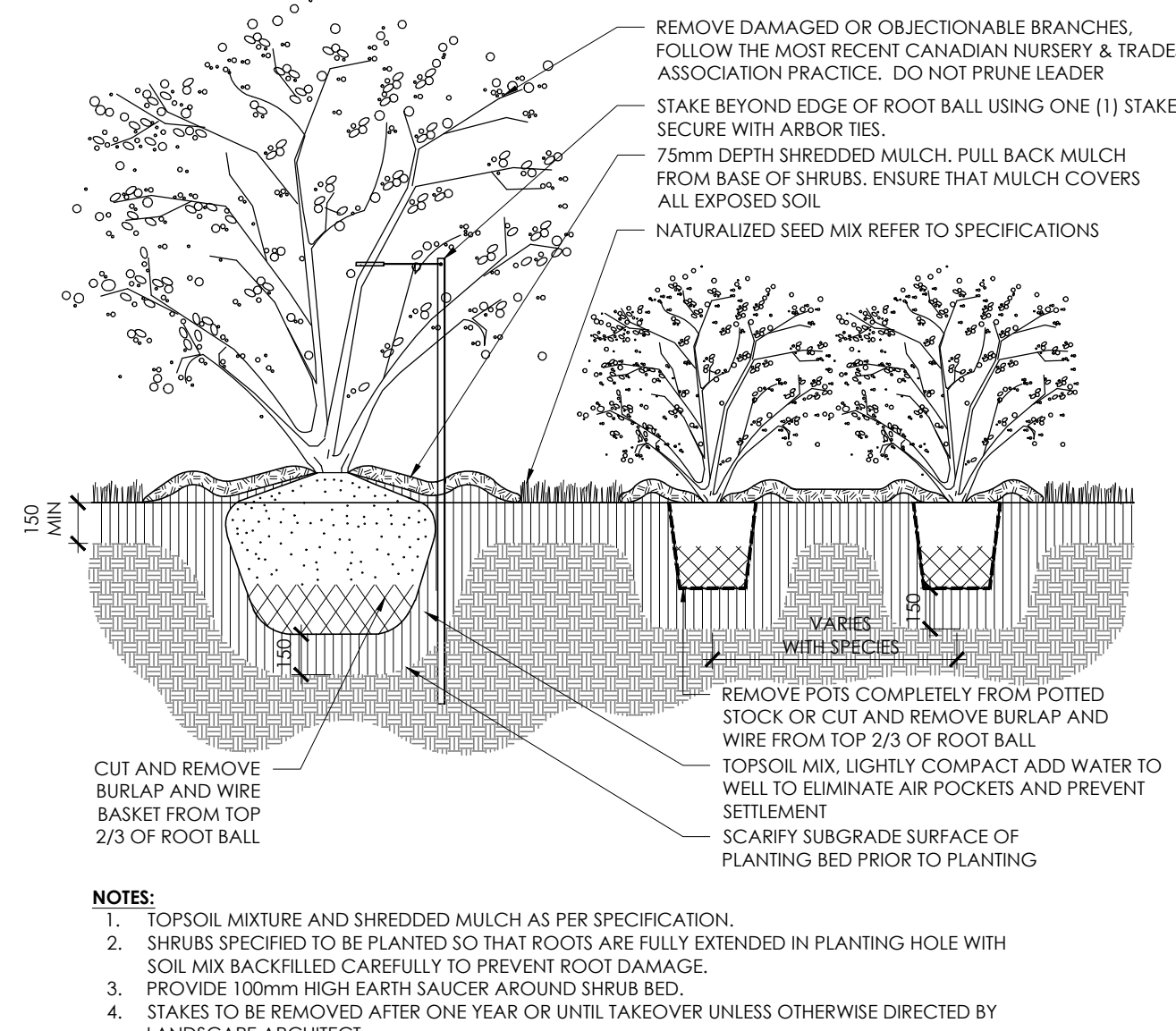
Contractor shall check all dimensions on the work and report any discrepancy to the Landscape Architect before proceeding. All drawings and specifications are the property of the Landscape Architect and must be returned at the completion of the work. This drawing is not to be used for construction until signed by the Landscape Architect.

Key Plan



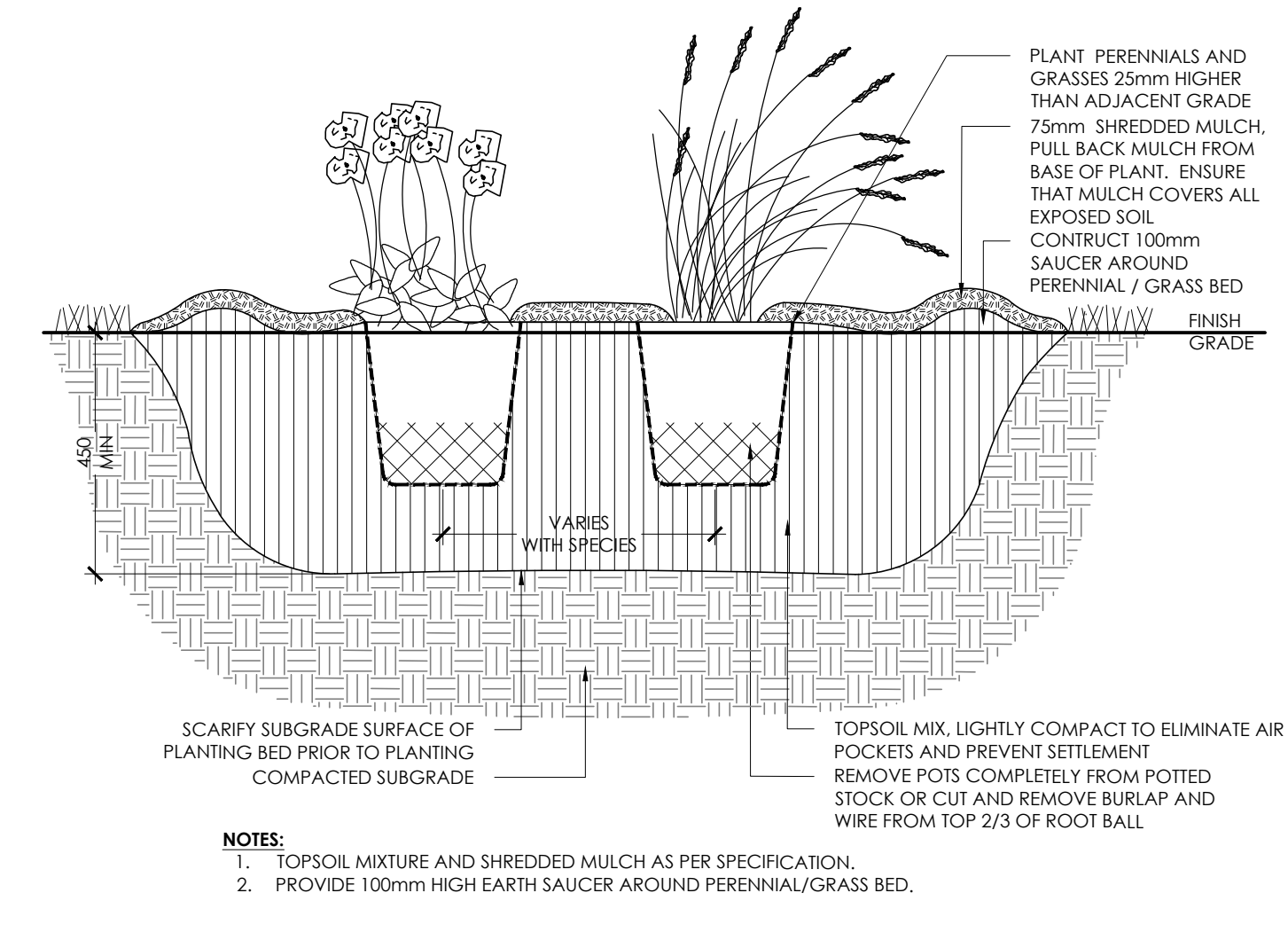
- NOTES:**
1. REMOVE STAKES AND ROOT GUARD AFTER ONE YEAR OR UNTIL TAKEOVER UNLESS OTHERWISE DIRECTED BY THE LANDSCAPE ARCHITECT.
 2. TOPSOIL MIXTURE AND SHREDDED MULCH AS PER SPECIFICATION
 3. REMOVE TREE WRAP AFTER PLANTING
 4. CALIPER TO BE MEASURED AT THE BASE OF TREE AT ROOT BALL.

1 DECIDUOUS TREE PLANTING
N.T.S.



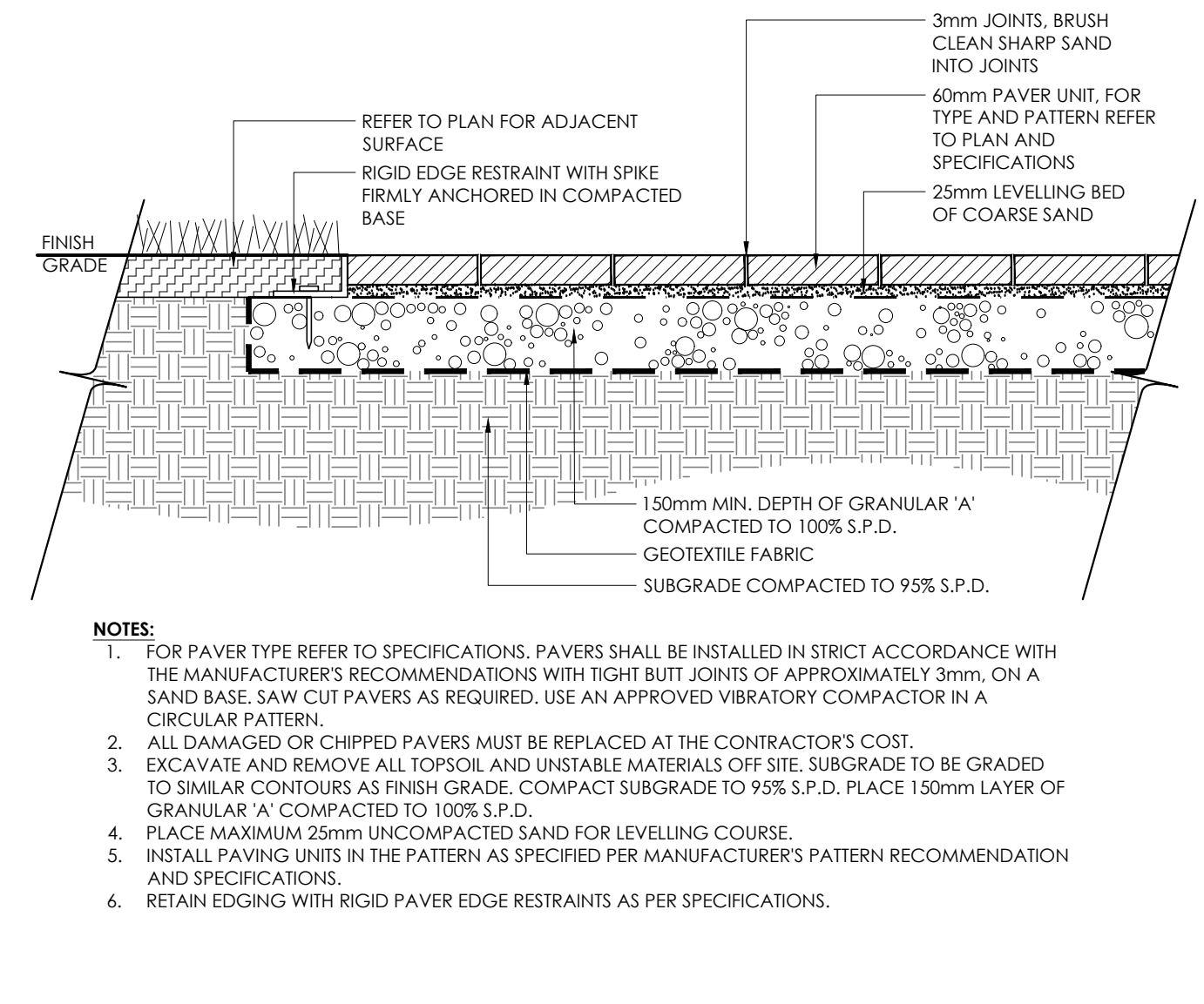
- NOTES:**
1. TOPSOIL MIXTURE AND SHREDDED MULCH AS PER SPECIFICATION.
 2. SHRUBS SPECIFIED TO BE PLANTED SO THAT ROOTS ARE FULLY EXTENDED IN PLANTING HOLE WITH SOIL MIX BACKFILLED CAREFULLY TO PREVENT ROOT DAMAGE.
 3. PROVIDE 100mm HIGH EARTH SAUCER AROUND SHRUB BED.
 4. STAKES TO BE REMOVED AFTER ONE YEAR OR UNTIL TAKEOVER UNLESS OTHERWISE DIRECTED BY LANDSCAPE ARCHITECT.

2 SHRUB BED PLANTING
N.T.S.



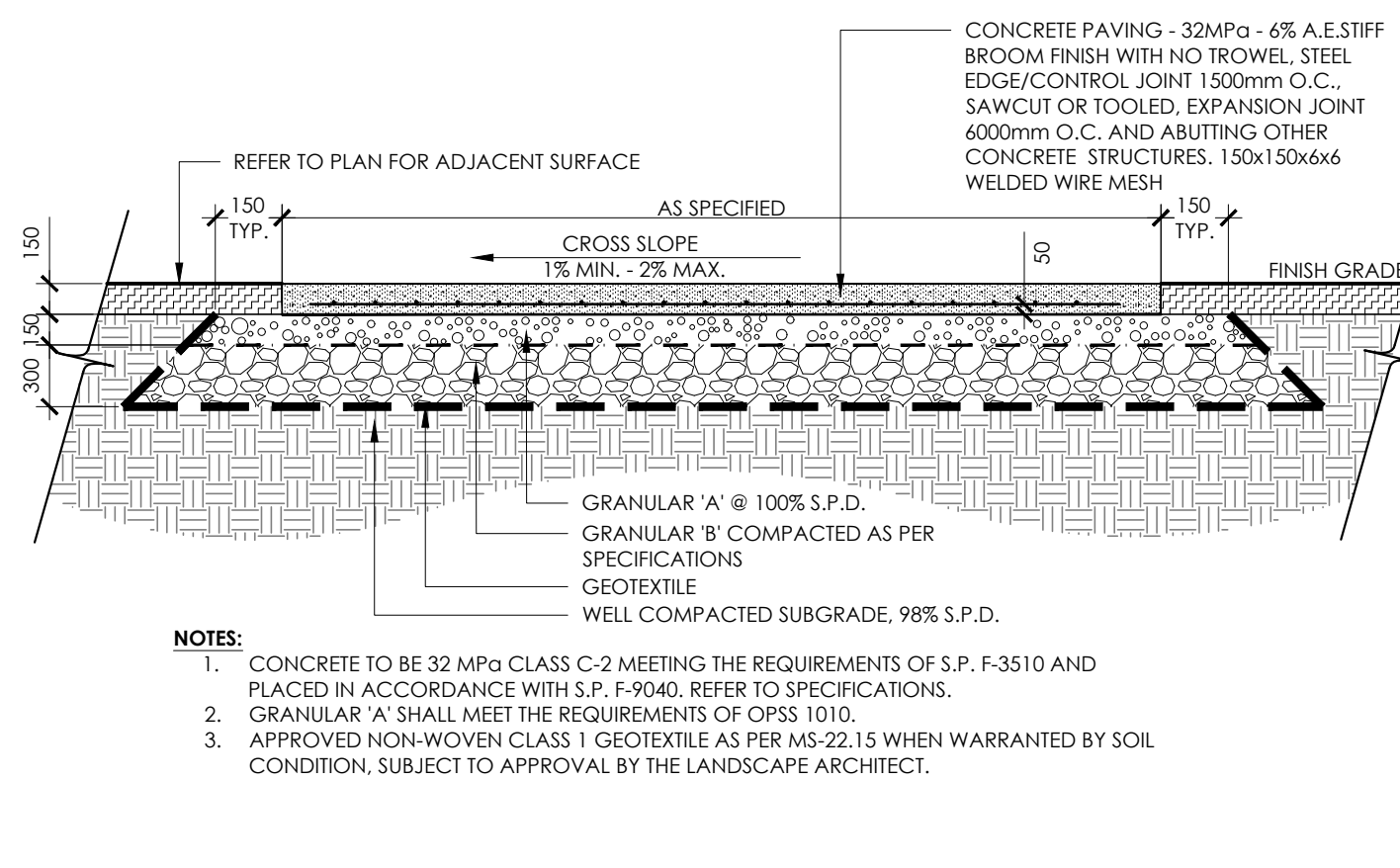
- NOTES:**
1. TOPSOIL MIXTURE AND SHREDDED MULCH AS PER SPECIFICATION.
 2. PROVIDE 100mm HIGH EARTH SAUCER AROUND PERENNIAL/GRASS BED.

3 PERENNIAL AND ORNAMENTAL GRASS PLANTING
N.T.S.



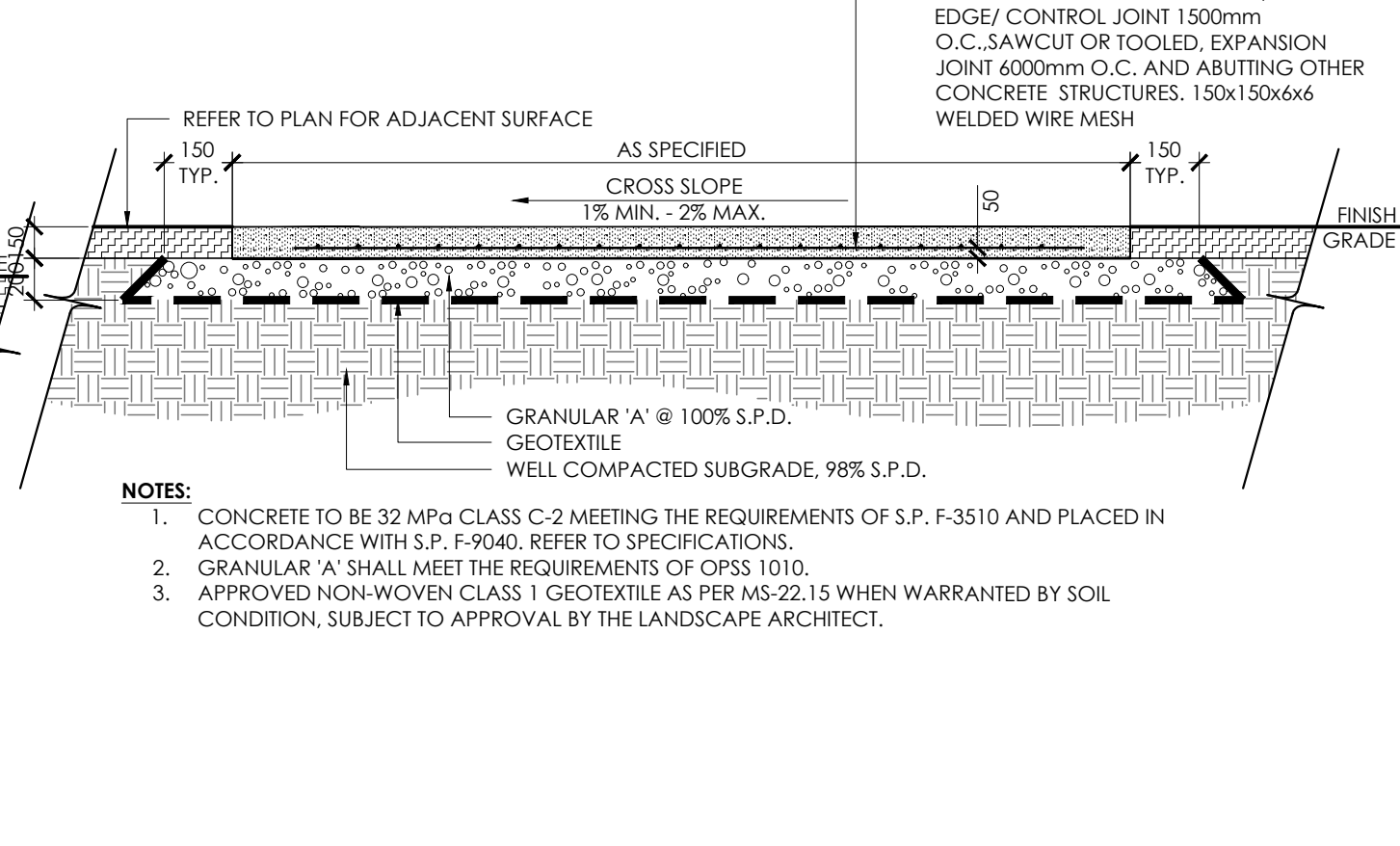
- NOTES:**
1. FOR PAVER TYPE REFER TO SPECIFICATIONS. PAVERS SHALL BE INSTALLED IN STRICT ACCORDANCE WITH THE MANUFACTURER'S RECOMMENDATIONS WITH TIGHT BUTT JOINTS OF APPROXIMATELY 3mm. ON A SAND BASE. SAW CUT PAVERS AS REQUIRED. USE AN APPROVED VIBRATORY COMPACTOR IN A CIRCULAR PATTERN.
 2. ALL DAMAGED OR CHIPPED PAVERS MUST BE REPLACED AT THE CONTRACTOR'S COST.
 3. EXCAVATE AND REMOVE ALL TOPSOIL AND UNSTABLE MATERIALS OFF SITE. SUBGRADE TO BE GRADED TO SIMILAR CONTOURS AS FINISH GRADE. COMPACT SUBGRADE TO 95% S.P.D. PLACE 150mm LAYER OF GRANULAR 'A' COMPACTED TO 100% S.P.D.
 4. PLACE MAXIMUM 25mm UNCOMPACTED SAND FOR LEVELLING COURSE.
 5. INSTALL PAVING UNITS IN THE PATTERN AS SPECIFIED PER MANUFACTURER'S PATTERN RECOMMENDATION AND SPECIFICATIONS.
 6. RETAIN EDGINGS WITH RIGID PAVER EDGE RESTRAINTS AS PER SPECIFICATIONS.

4 LIGHT DUTY UNIT PAVING
N.T.S.



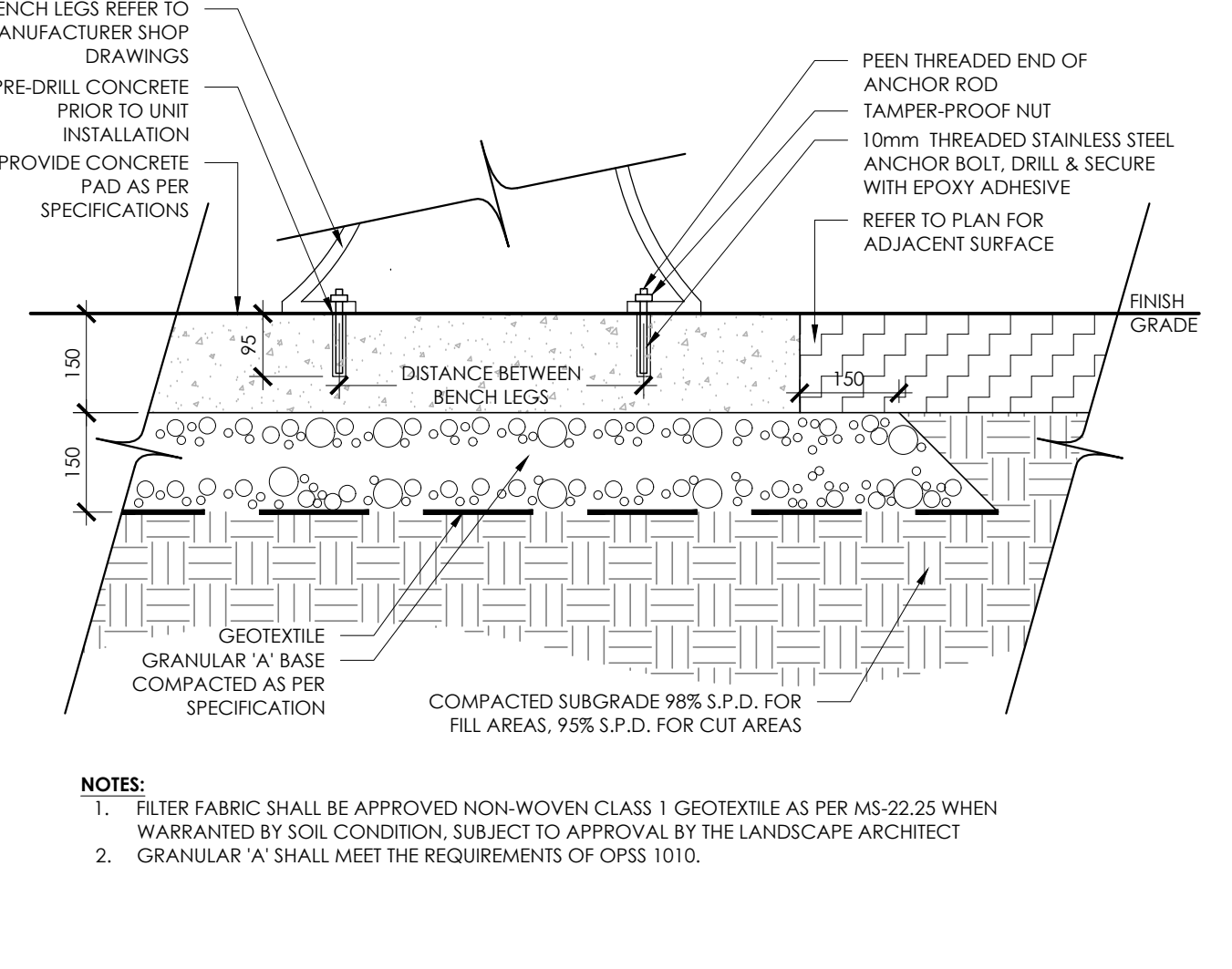
- NOTES:**
1. CONCRETE TO BE 32 MPa CLASS C-2 MEETING THE REQUIREMENTS OF S.P. F-3510 AND PLACED IN ACCORDANCE WITH S.P. F-9040. REFER TO SPECIFICATIONS.
 2. GRANULAR 'A' SHALL MEET THE REQUIREMENTS OF OPSS 1010.
 3. APPROVED NON-WOVEN CLASS 1 GEOTEXTILE AS PER MS-22.15 WHEN WARRANTED BY SOIL CONDITION. SUBJECT TO APPROVAL BY THE LANDSCAPE ARCHITECT.

5 HEAVY DUTY CONCRETE PAVING
N.T.S.



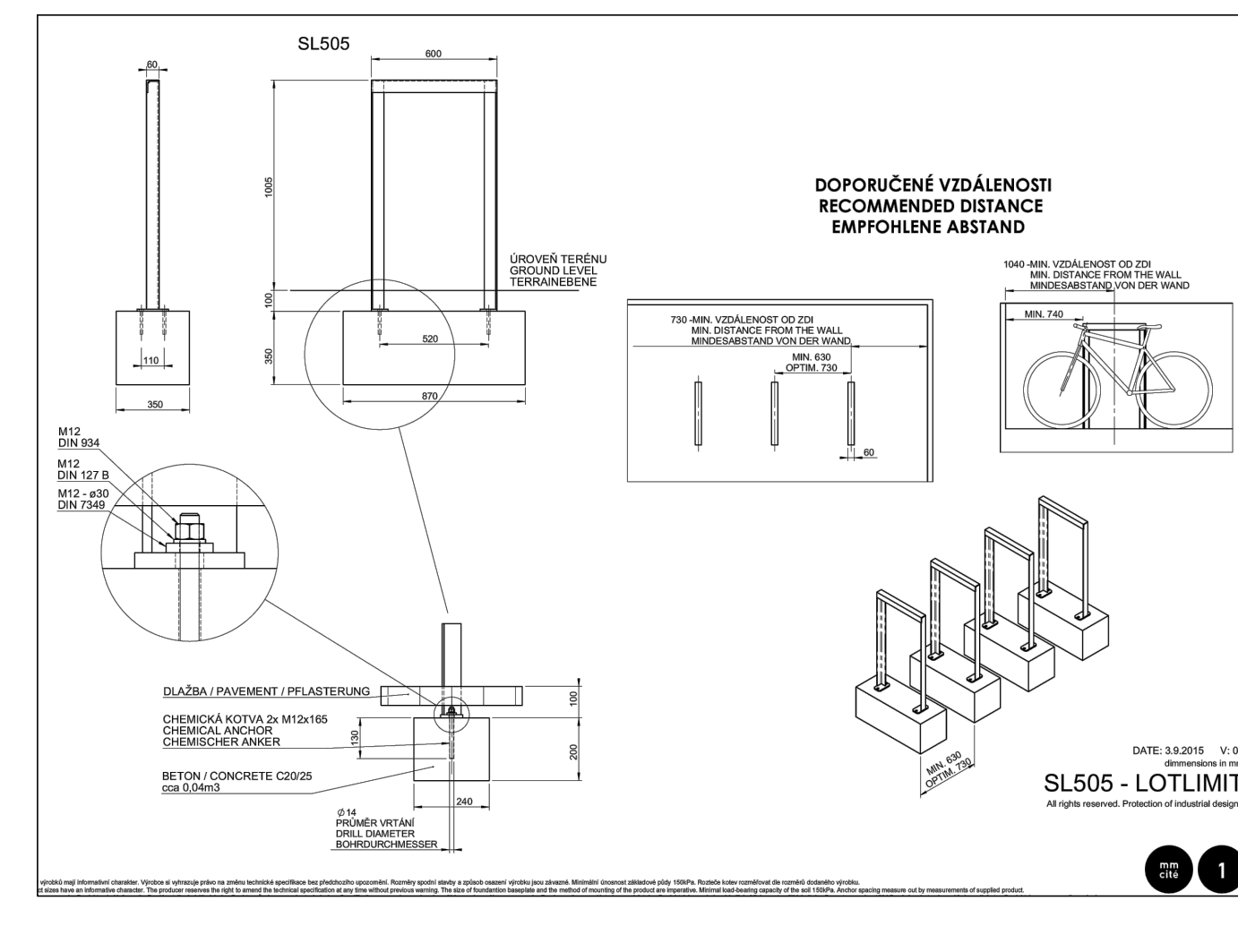
- NOTES:**
1. CONCRETE TO BE 32 MPa CLASS C-2 MEETING THE REQUIREMENTS OF S.P. F-3510 AND PLACED IN ACCORDANCE WITH S.P. F-9040. REFER TO SPECIFICATIONS.
 2. GRANULAR 'A' SHALL MEET THE REQUIREMENTS OF OPSS 1010.
 3. APPROVED NON-WOVEN CLASS 1 GEOTEXTILE AS PER MS-22.15 WHEN WARRANTED BY SOIL CONDITION. SUBJECT TO APPROVAL BY THE LANDSCAPE ARCHITECT.

6 LIGHT DUTY CONCRETE PAVING
N.T.S.

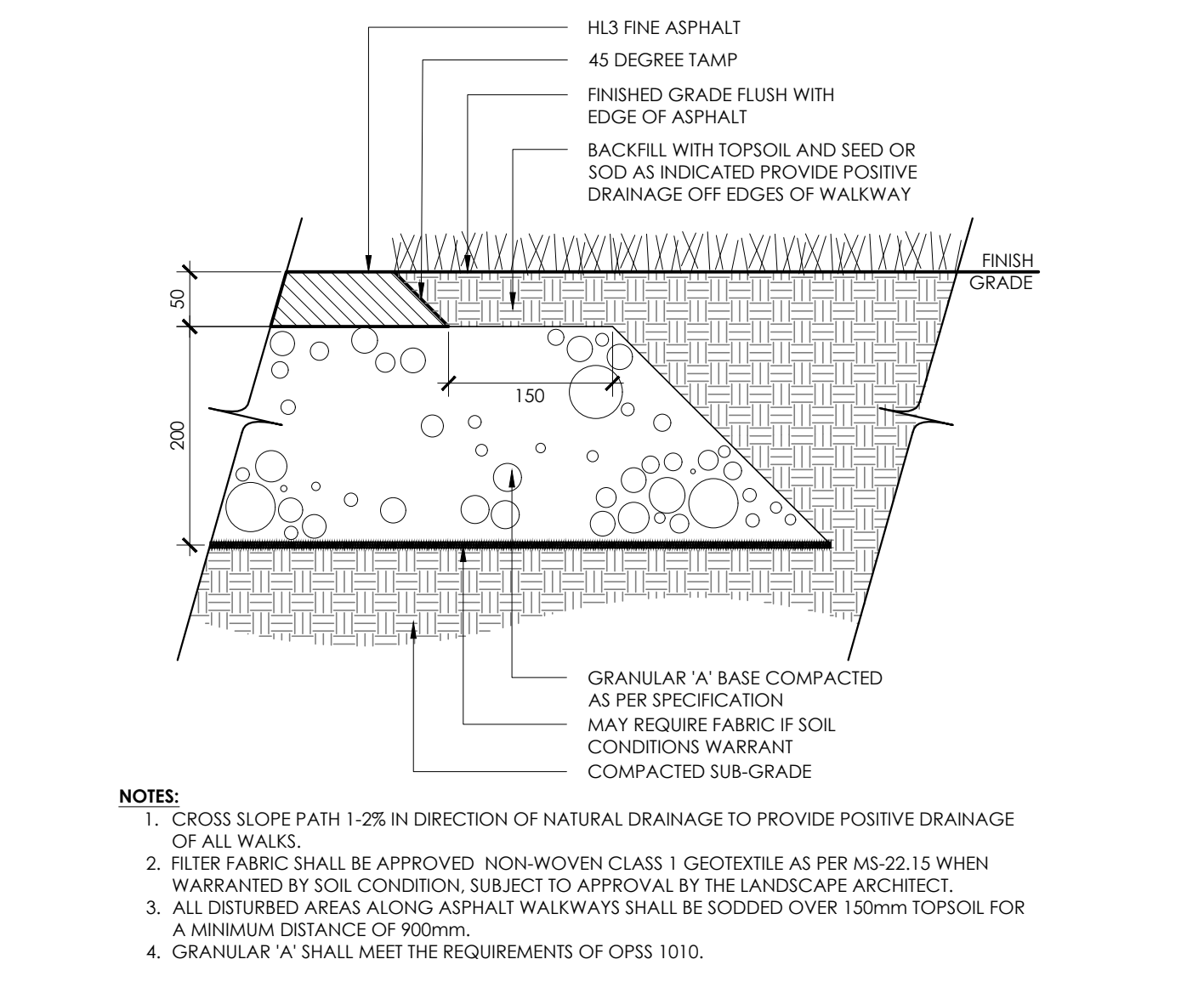


- NOTES:**
1. FILTER FABRIC SHALL BE APPROVED NON-WOVEN CLASS 1 GEOTEXTILE AS PER MS-22.25 WHEN WARRANTED BY SOIL CONDITION. SUBJECT TO APPROVAL BY THE LANDSCAPE ARCHITECT
 2. GRANULAR 'A' SHALL MEET THE REQUIREMENTS OF OPSS 1010.

7 BENCH MOUNTING ON CONCRETE BASE
N.T.S.

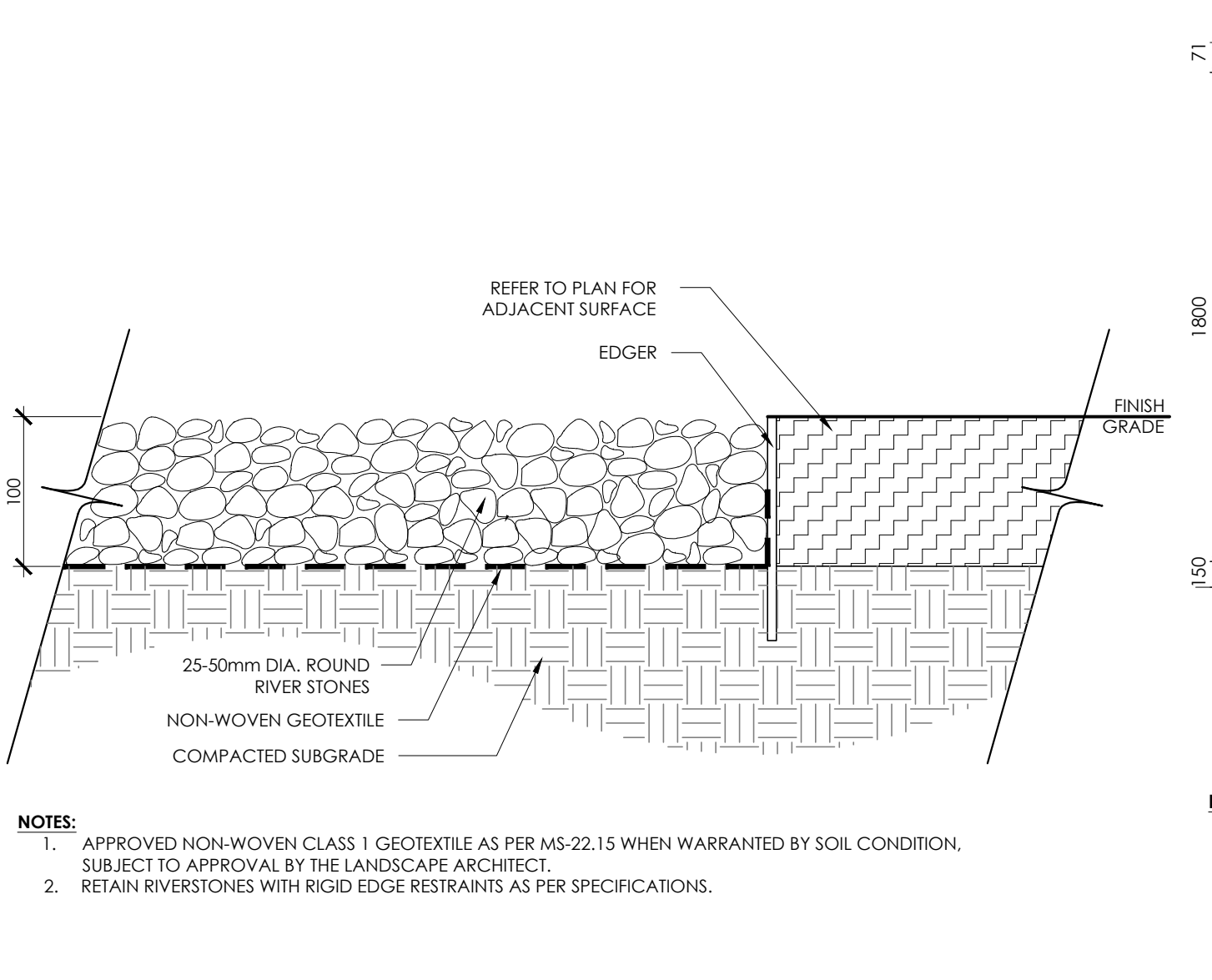


8 BIKE RACK - ON CIP CONCRETE
N.T.S.



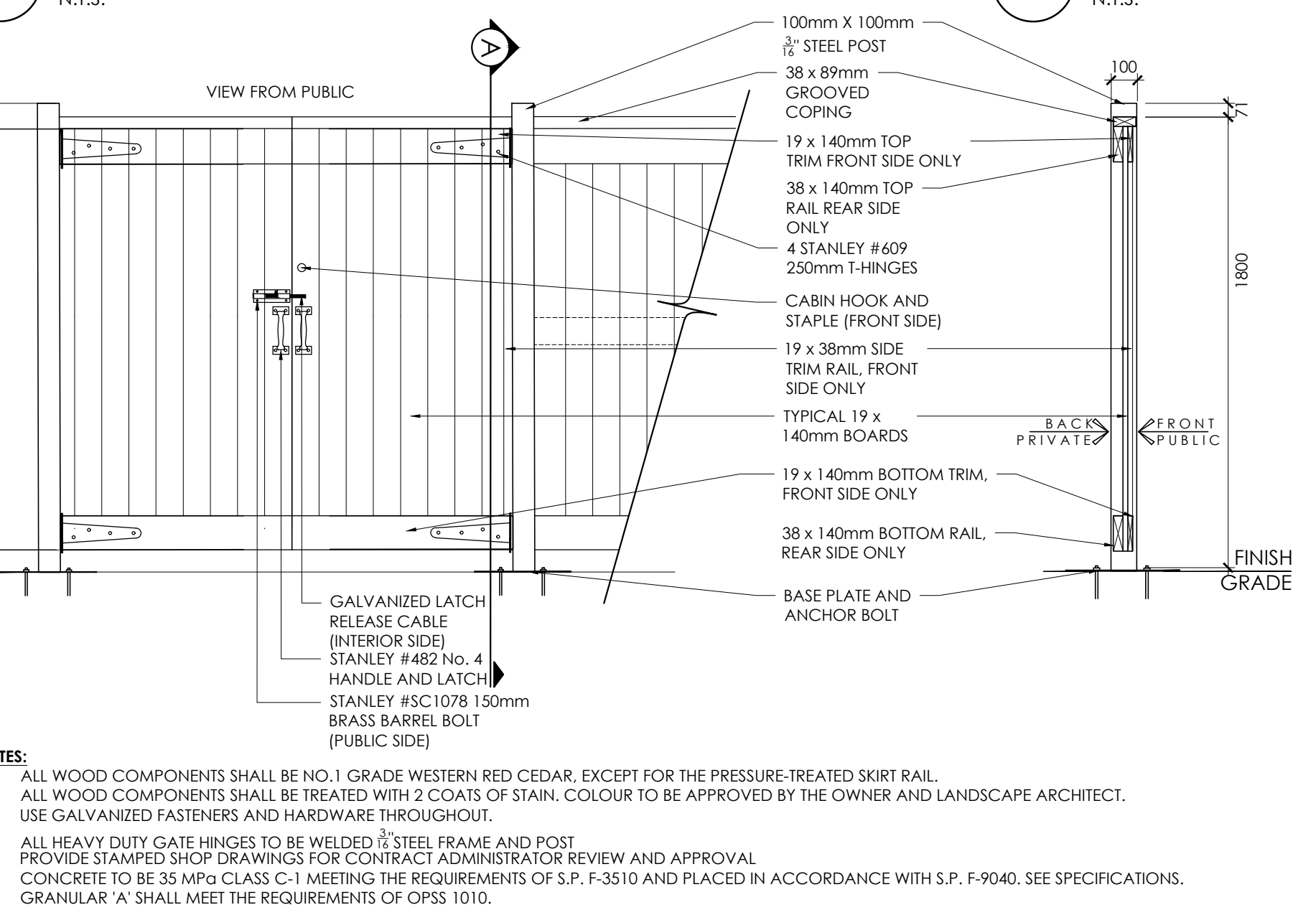
- NOTES:**
1. CROSS SLOPE PATH 1-2% IN DIRECTION OF NATURAL DRAINAGE TO PROVIDE POSITIVE DRAINAGE OF ALL WALKS.
 2. FILTER FABRIC SHALL BE APPROVED NON-WOVEN CLASS 1 GEOTEXTILE AS PER MS-22.15 WHEN WARRANTED BY SOIL CONDITION. SUBJECT TO APPROVAL BY THE LANDSCAPE ARCHITECT.
 3. ALL DISTURBED AREAS ALONG ASPHALT WALKWAYS SHALL BE SODDED OVER 150mm TOPSOIL FOR A MINIMUM DISTANCE OF 900mm.
 4. GRANULAR 'A' SHALL MEET THE REQUIREMENTS OF OPSS 1010.

9 LIGHT DUTY ASPHALT PAVING
N.T.S.



- NOTES:**
1. APPROVED NON-WOVEN CLASS 1 GEOTEXTILE AS PER MS-22.15 WHEN WARRANTED BY SOIL CONDITION. SUBJECT TO APPROVAL BY THE LANDSCAPE ARCHITECT.
 2. RETAIN RIVERSTONES WITH RIGID EDGE RESTRAINTS AS PER SPECIFICATIONS.

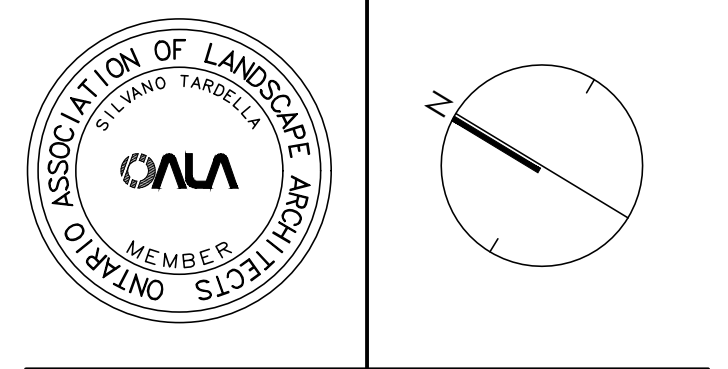
10 RIVER STONE PAVING
N.T.S.



- NOTES:**
1. ALL WOOD COMPONENTS SHALL BE NO. 1 GRADE WESTERN RED CEDAR, EXCEPT FOR THE PRESSURE-TREATED SKIRT RAIL.
 2. ALL WOOD COMPONENTS SHALL BE TREATED WITH 2 COATS OF STAIN. COLOUR TO BE APPROVED BY THE OWNER AND LANDSCAPE ARCHITECT.
 3. USE GALVANIZED FASTENERS AND HARDWARE THROUGHOUT.
 4. ALL HEAVY DUTY GATE HINGES TO BE WELDED 1/2\"/>

11 2.0m HT. PEDESTRIAN ACCESS GATE AND FENCE
N.T.S.

No.	Description	Date
5	Issued for Second Submission	DEC 06/22
4	Issued for Second Submission	NOV 24/22
3	Issued for Second Submission	NOV 18/22
2	Re-issued for First Submission	MAR 21/22
1	Issued for First Submission	NOV 2021
Revision		
City Approval Stamp		



NAK
design strategies
1285 WELLINGTON STREET WEST, OTTAWA, ON K1T 3A8 CANADA
T 613.237.2345 F 613.237.4423 NAKDESIGNSTRATEGIES.COM
Project

HALF MOON BAY SOUTH
PHASE 8

Title	DETAILS
Date	OCT.29.2021
Scale	N.T.S.
Drawn	TY
Checked	TM
Job No.	20-210
Sheet	D-01