

Copyright Reserved

The Contractor shall verify and be responsible for all dimensions. DO NOT scale the drawing - any errors or omissions shall be reported to Stantec without delay.  
The Copyrights to all designs and drawings are the property of Stantec. Reproduction or use for any purpose other than that authorized by Stantec is forbidden.

Legend

- ORIGINAL GROUND ELEVATION
- PROPOSED ELEVATION
- PROPOSED LOT CORNER ELEVATION
- EXISTING ELEVATION AT LOT CORNER
- FLOW DIRECTION AND GRADE
- FINISHED FIRST FLOOR ELEVATION
- UNDERSIDE OF FOOTING ELEVATION
- TOP OF FOUNDATION WALL ELEVATION
- ENGINEERED FILL REQUIRED
- TERRACING 3:1 SLOPE MAXIMUM (UNLESS OTHERWISE SHOWN)
- DIRECTION OF PROPOSED OVERLAND FLOW
- PROPOSED VALVE BOX
- PROPOSED VALVE CHAMBER
- PROPOSED FIRE HYDRANT
- PROPOSED SANITARY SEWER MANHOLE
- PROPOSED STORM SEWER MANHOLE
- PROPOSED CATCHBASIN MANHOLE
- PROPOSED CATCHBASIN
- PROPOSED DEPRESSED CURB LOCATION
- PROPOSED BARRIER CURB
- PROPOSED COMMUNITY MAILBOX LOCATIONS
- HEAVY DUTY ASPHALT
- OVERLAND SPILL LOCATION

Notes

- SITE PLAN PREPARED BY KORSIAK URBAN PLANNING, DATED DECEMBER 02, 2021
- TOPOGRAPHIC SURVEY SUPPLIED BY STANTEC GEOMATICS LTD. PROJECT No. 16161382-111. PART OF TOWN OF OTTAWA CONVESSION 3 (OTTAWA FRONT). GEOGRAPHIC FORMSHIP OF GLOUCESTER, CITY OF OTTAWA.
- TIE IN ELEVATIONS ON OBSIDIAN STREET BY DSEL LTD. THE RIDGE SUBDIVISION PHASE 1 DETAILED DESIGN, DATED SEP 25, 2020)
- ALL TERRACE FLAT ROOF EAVES TROUGH TO OUTLET TO INTERNAL SURFACE PARKING AREAS.
- MAINTENANCE HOLES LOCATED IN PONDING AREAS SHALL HAVE WATER TIGHT FRAME AND COVERS AS PER CITY STANDARD S24, S24.1 AND S25.

**HEAVY DUTY ASPHALT**  
40mm HLB OR SUPERPAVE 12.5 ASPHALTIC CONCRETE  
50mm HLB OR SUPERPAVE 19.0 ASPHALTIC CONCRETE  
150mm OPSR GRANULAR A BASE  
400mm OPSR GRANULAR B TYPE II

**LIGHT DUTY AREAS**  
50mm HLB OR SUPERPAVE 12.5 ASPHALTIC CONCRETE  
150 OPSR GRANULAR A BASE  
300 OPSR GRANULAR B TYPE II

**RISER COUNT AND DIMENSION - STACKED TOWNS**

- 3R = 0.45m TO 3R = 0.54m
- 4R = 0.60m TO 4R = 0.72m
- 5R = 0.75m TO 5R = 0.90m
- 6R = 0.90m TO 6R = 1.08m
- 7R = 1.05m TO 7R = 1.26m
- 8R = 1.20m TO 8R = 1.44m
- 9R = 1.35m TO 9R = 1.62m

1	ISSUED FOR 1ST SUBMISSION	AJ	SG	22.12.07
0	FOR REVIEW	AJ	SG	21.11.23

Revision	By	Appd.	YY.MM.DD
----------	----	-------	----------

File Name:	160401657.DB	MJS	SG	MJS	21.06.29
		Dwn.	Chkd.	Dgn.	YY.MM.DD

Permit-Seal	
-------------	--

Client/Project

Mattamy Homes

HMB PHASE 8

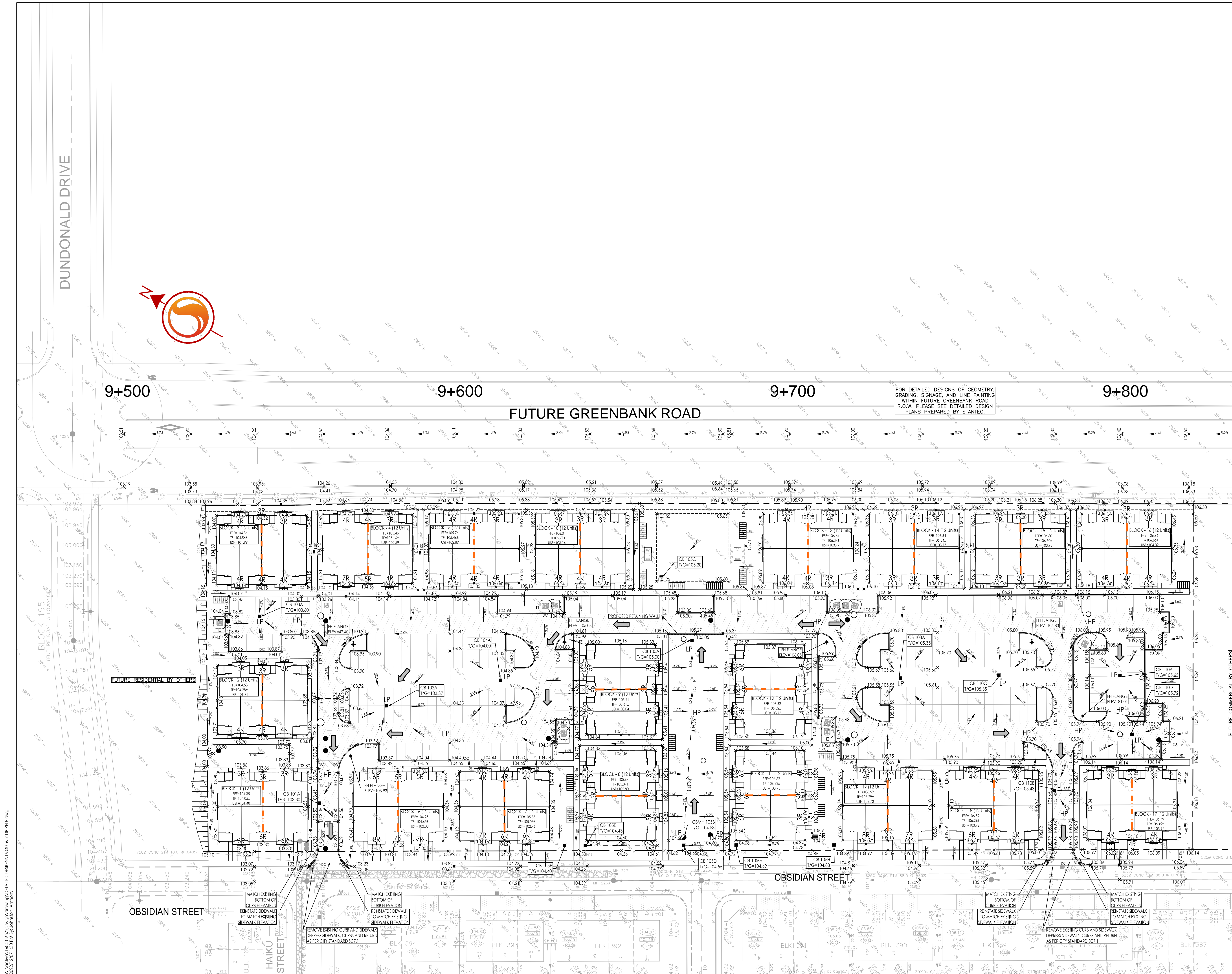
OTTAWA, ON

Title

GRADING PLAN

Project No.	Scale
160401657	0 5 15 25m 1:500

Drawing No.	Sheet	Revision
GP-1	4 of 8	1



W:\01657\160401657.dwg (design) (DATE: 2021.06.29) DESIGNED BY: J. JOHNSON  
 2021.06.29 10:58 AM J. JOHNSON  
 ORIGINAL SHEET - ARCH D