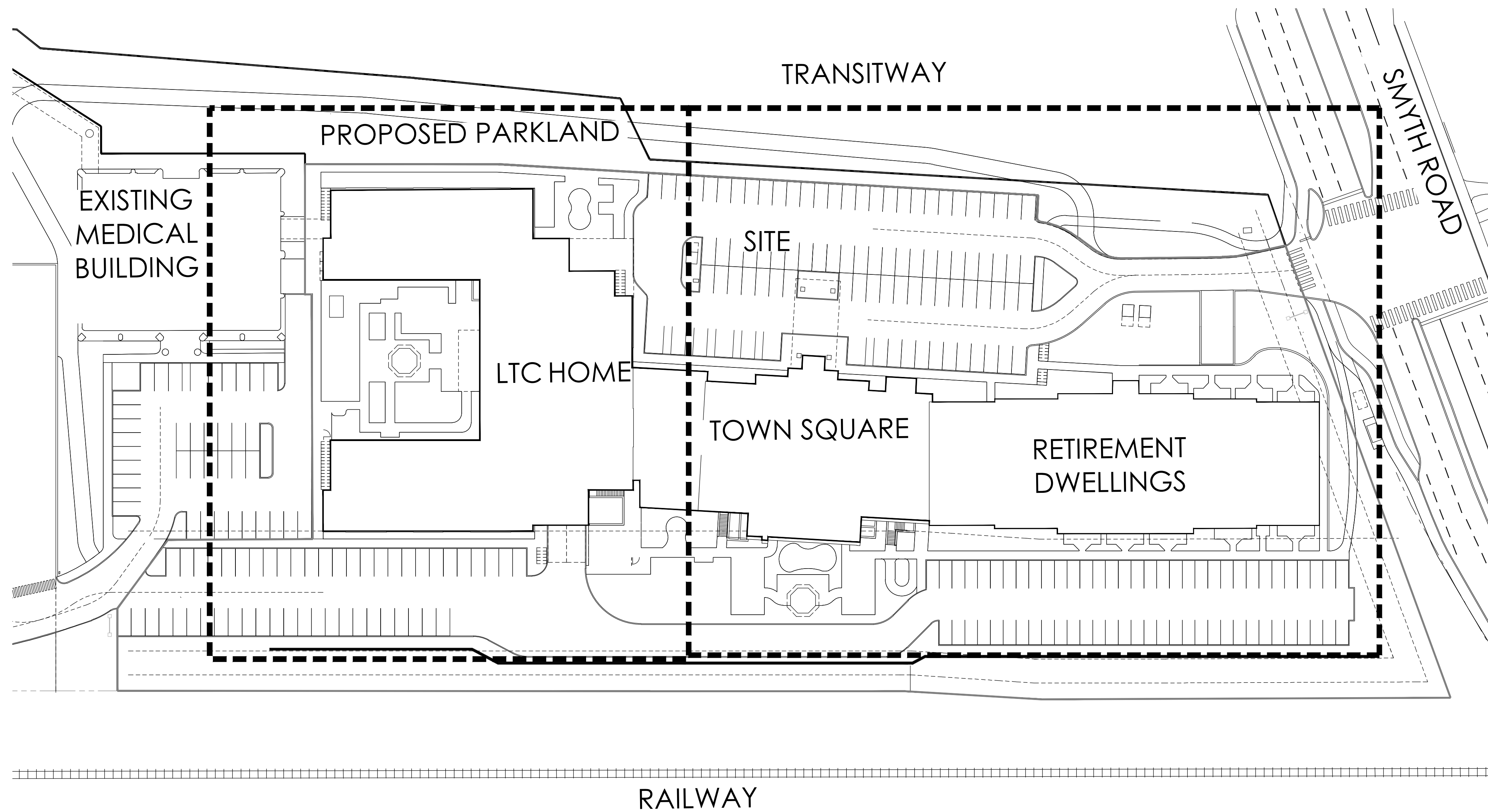


SCHLEGEL VILLAGES OTTAWA



NAK PROJECT NO. 21-193

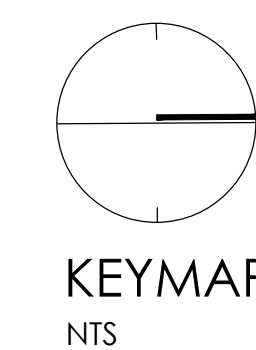
PROJECT ADDRESS:
1919 RIVERSIDE DRIVE,
OTTAWA, ON

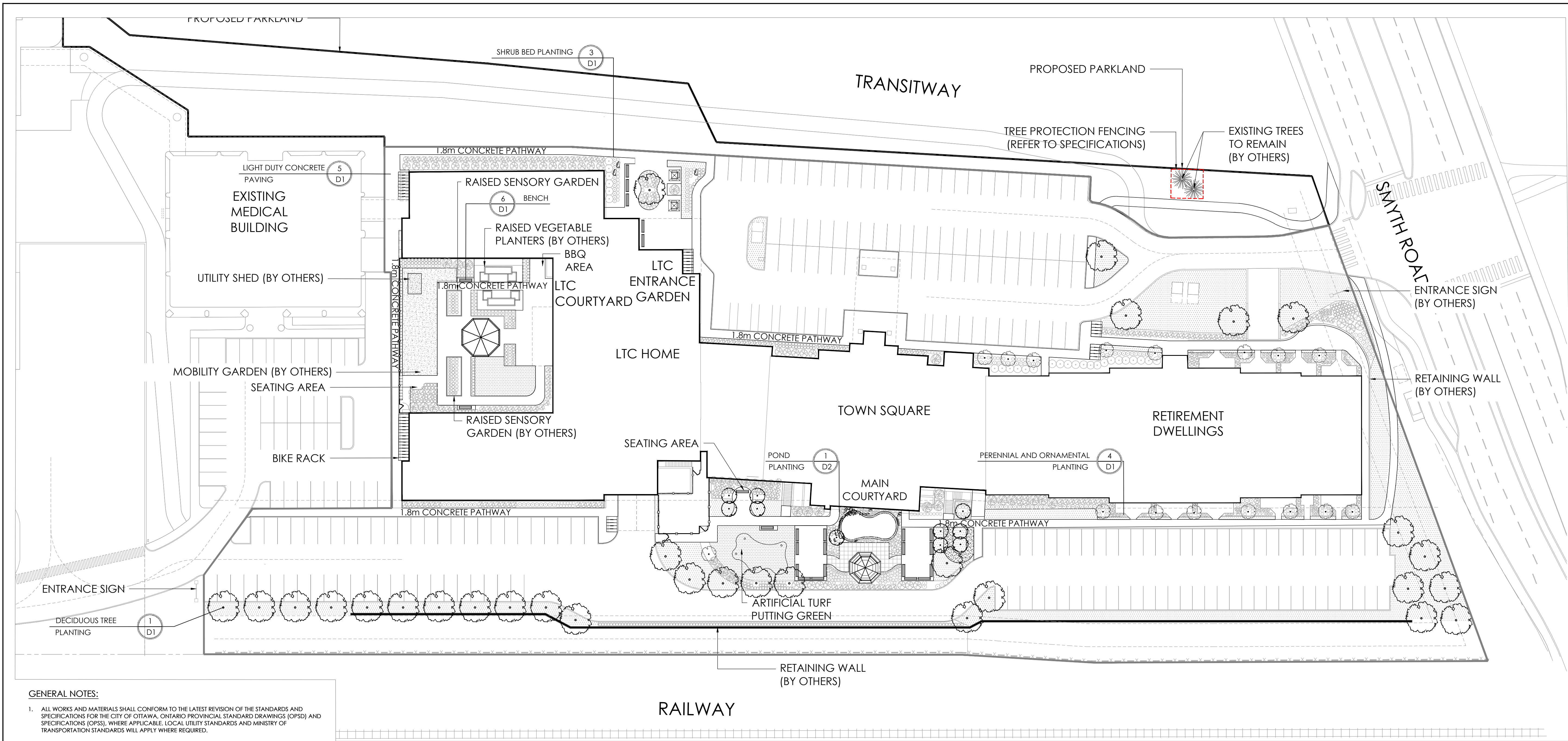
ISSUED FOR THIRD SUBMISSION
DECEMBER, 2022

LIST OF DRAWINGS:

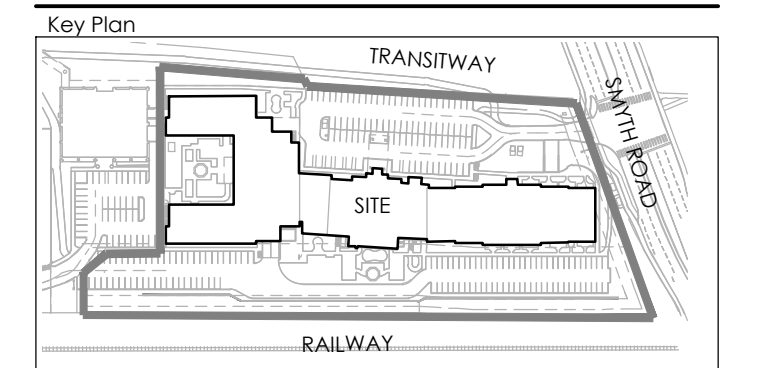
NAK	-	
L01	-	LANDSCAPE PLAN
L02	-	LANDSCAPE PLAN
L03	-	LANDSCAPE PLAN

DETAILS	-	
D01	-	DETAILS
D02	-	DETAILS





Contractor shall check all dimensions on the work and report any discrepancy to the Landscape Architect before proceeding. All drawings and specifications are the property of the Landscape Architect and must be returned at the completion of the work. This drawing is not to be used for construction until signed by the Landscape Architect.



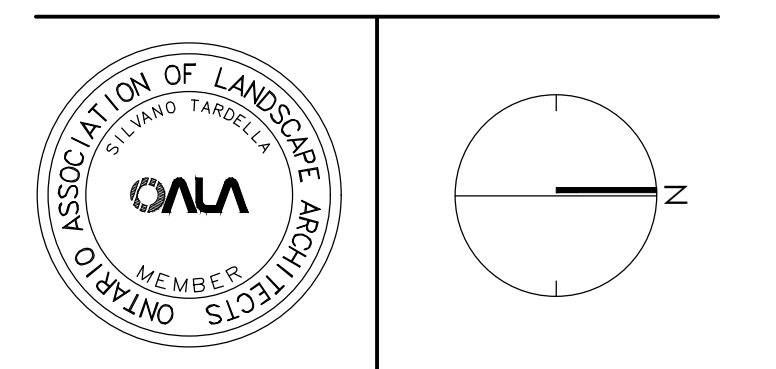
LEGEND

—	PROPERTY LINE
—○—	2.0m HT. METAL FENCE
—○—	1.2m HT. WOODEN FENCE
- - -	TREE PROTECTION FENCING
PLANTING	
	EXISTING CONIFEROUS TREE
	LARGE DECIDUOUS TREE
	SMALL DECIDUOUS TREE
	TREE FORM SHRUB/SMALL COLUMNAR TREE
	SOD
	STONEDUST PAVING
	CONIFEROUS SHRUB
	DECIDUOUS SHRUB
	GRASSES / PERENNIALS
SURFACING	
	C.P. CONCRETE
	CONCRETE PATH
AMENITIES	
	BENCH
	RAISED PLANTERS (BY OTHERS)
	BIKE RACK
	ARMOUR STONE BOULDER
	GAZEBO
PLANTING KEY	
	TREE SPECIES
	QUANTITY
	SHRUB SPECIES
	QUANTITY

7	Issued for Third Submission	Dec/14/22
6	Issued for Second Submission	Apr/8/22
5	Issued for Client Review	Mar/24/22
4	Issued for Coordination	Mar/17/22
3	Issued for Client Review	Feb/4/22
2	Issued for First Submission	Oct/25/21
1	Issued for Coordination	Oct/18/21
No.	Description	Date
Revision		
City Approval Stamp		

- GENERAL NOTES:**
- ALL WORKS AND MATERIALS SHALL CONFORM TO THE LATEST REVISION OF THE STANDARDS AND SPECIFICATIONS FOR THE CITY OF OTTAWA, ONTARIO PROVINCIAL STANDARD DRAWINGS (OPSD) AND SPECIFICATIONS (OPSS), WHERE APPLICABLE. LOCAL UTILITY STANDARDS AND MINISTRY OF TRANSPORTATION STANDARDS WILL APPLY WHERE REQUIRED.
 - THE CONTRACTOR SHALL CONFIRM THE LOCATION OF ALL EXISTING UTILITIES WITHIN THE SITE AND ADJACENT WORK AREAS. THE CONTRACTOR SHALL BE RESPONSIBLE FOR PROTECTING ALL EXISTING UTILITIES TO THE SATISFACTION OF THE AUTHORITY HAVING JURISDICTION. THE CONTRACTOR SHALL BE RESPONSIBLE FOR THE REPAIR OR REPLACEMENT OF ANY SERVICES OR UTILITIES DISTURBED DURING CONSTRUCTION, TO THE SATISFACTION OF THE AUTHORITY HAVING JURISDICTION.
 - ALL DIMENSIONS SHALL BE CHECKED AND VERIFIED IN THE FIELD BY THE CONTRACTOR PRIOR TO THE START OF CONSTRUCTION. ANY DISCREPANCIES SHALL BE REPORTED IMMEDIATELY TO THE ENGINEER. LOST TIME DUE TO FAILURE OF THE CONTRACTOR TO CONFIRM UTILITY LOCATIONS AND NOTIFY ENGINEER OF POSSIBLE CONFLICTS PRIOR TO CONSTRUCTION WILL BE AT THE CONTRACTOR'S EXPENSE.
 - ANY AREAS BEYOND THE LIMIT OF THE SITE DISTURBED DURING CONSTRUCTION SHALL BE RESTORED TO ORIGINAL CONDITION OR BETTER TO THE SATISFACTION OF THE AUTHORITY HAVING JURISDICTION AT THE CONTRACTOR'S EXPENSE.
 - ALL WORK SHALL BE COMPLETED IN ACCORDANCE WITH THE 'OCCUPATIONAL HEALTH AND SAFETY ACT AND REGULATIONS FOR CONSTRUCTION PROJECTS,' THE GENERAL CONTRACTOR SHALL BE DEEMED TO BE THE 'CONSTRUCTOR' AS DEFINED IN THE ACT.
 - ALL CONSTRUCTION SIGNAGE MUST CONFORM TO THE MINISTRY OF TRANSPORTATION OF ONTARIO MANUAL OF UNIFORM TRAFFIC CONTROL DEVICES PER LATEST AMENDMENT.
 - THE CONTRACTOR IS ADVISED THAT WORKS BY OTHERS MAY BE ONGOING DURING THE PERIOD OF THIS CONTRACT. THE CONTRACTOR SHALL COORDINATE CONSTRUCTION ACTIVITIES TO PREVENT CONFLICTS.
 - ALL DIMENSIONS ARE IN METRES UNLESS SPECIFIED OTHERWISE.
 - THERE WILL BE NO SUBSTITUTION OF MATERIALS UNLESS PRIOR WRITTEN APPROVAL IS RECEIVED FROM THE ENGINEER.
 - ALL CONSTRUCTION SHALL BE CARRIED OUT IN ACCORDANCE WITH THE RECOMMENDATIONS MADE IN THE GEOTECHNICAL REPORT.
 - ALL SEWERS CONSTRUCTED WITH GRADES LESS THAN 1.0% SHALL BE INSTALLED USING LASER ALIGNMENT AND CHECKED WITH LEVEL INSTRUMENT PRIOR TO BACKFILLING.
 - THE CONTRACTOR IS RESPONSIBLE FOR OBTAINING ALL PERMITS REQUIRED AND TO BEAR THE COST OF THE SAME.
 - THE CONTRACTOR WILL BE RESPONSIBLE FOR ADDITIONAL BEDDING, OR ADDITIONAL STRENGTH PIPE IF THE MAXIMUM TRENCH WIDTH AS SPECIFIED BY OPSD IS EXCEEDED.
 - ALL PIPE / CULVERT SECTION SIZES REFER TO INSIDE DIMENSIONS.
 - SHOULD DEEPLY BURIED ARCHAEOLOGICAL REMAINS BE FOUND ON THE PROPERTY DURING CONSTRUCTION ACTIVITIES, THE HERITAGE OPERATIONS UNIT OF THE ONTARIO MINISTRY OF CULTURE MUST BE NOTIFIED IMMEDIATELY.
 - ALL NECESSARY CLEARING AND GRUBBING SHALL BE COMPLETED BY THE CONTRACTOR. REVIEW WITH CONTRACT ADMINISTRATOR AND THE CITY OF OTTAWA PRIOR TO ANY TREE CUTTING / REMOVAL.
 - DRAWINGS SHALL BE READ IN CONJUNCTION WITH THE SITE PLAN.
 - THE CONTRACTOR SHALL PROVIDE THE PROJECT ENGINEER ONE SET OF AS CONSTRUCTED SITE SERVICING AND GRADING DRAWINGS.
 - BENCHMARKS: IT IS THE RESPONSIBILITY OF THE CONTRACTOR TO VERIFY THAT THE SITE BENCHMARK(S) HAS NOT BEEN ALTERED OR DISTURBED AND THAT ITS RELATIVE ELEVATION AND DESCRIPTION AGREES WITH THE INFORMATION DEPICTED ON THIS PLAN.

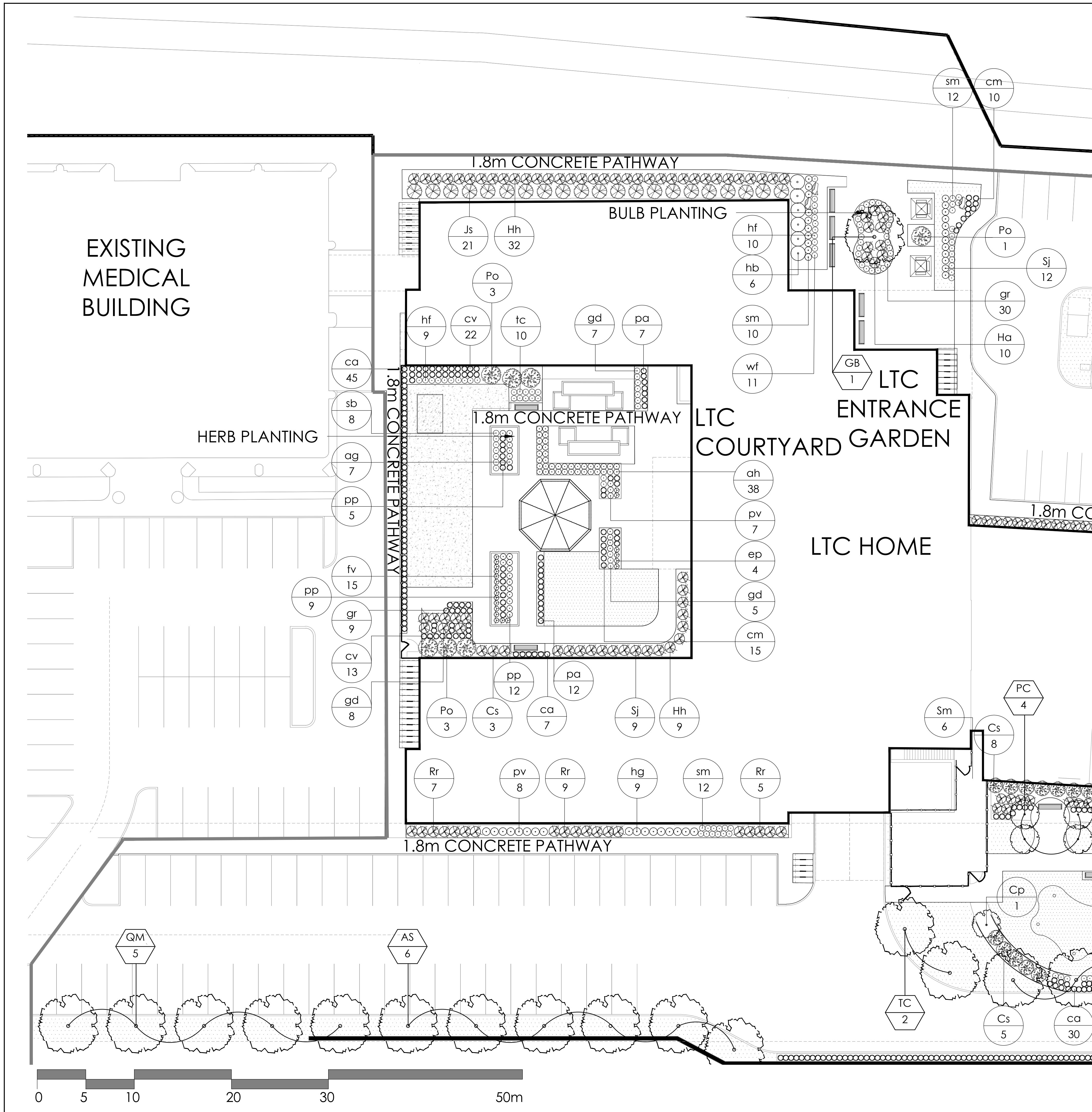
- PLANTING NOTES:**
- CONTRACTOR TO VERIFY LOCATION OF ALL SERVICES PRIOR TO ANY EXCAVATION.
 - LOCATIONS OF ALL PLANT MATERIALS TO BE STAKED BY THE CONTRACTOR AND VERIFIED IN THE FIELD BY LANDSCAPE ARCHITECT PRIOR TO THE EXCAVATION OF PITS.
 - ALL PLANT MATERIAL SHALL BE NURSERY GROWN STOCK UNLESS OTHERWISE NOTED.
 - DECIDUOUS TREES TO HAVE A MINIMUM 1800 CLEAR STEM ABOVE GRADE.
 - ALL PLANT MATERIAL SHALL BE WARRANTED FOR TWO YEARS FROM THE DATE OF SUBSTANTIAL COMPLETION AS DETERMINED BY THE LANDSCAPE ARCHITECT.
 - ALL STEEL T-BARS TO BE REMOVED AT THE ONE YEAR INTERIM INSPECTION UNLESS OTHERWISE DIRECTED BY THE LANDSCAPE ARCHITECT.
 - CONTRACTOR TO REINSTATE ALL EXISTING AREAS DAMAGED BY HIS WORK TO THE SATISFACTION OF THE LANDSCAPE ARCHITECT.
 - PERIODIC REVIEWS OF PLANTING SHALL BE CARRIED OUT BY THE LANDSCAPE ARCHITECT.
 - ACER RUBRUM, QUERCUS RUBRA AND CELTIS OCCIDENTALIS TO BE SPRING DUG SPECIMENS AND PLANTING IN THE SPRING ONLY.
 - ANY PROPOSED SUBSTITUTIONS OF PLANT SPECIES SHALL BE MADE WITH PLANTS OF EQUIVALENT OVERALL FORM, HEIGHT, BRANCHING HABIT, FLOWER, LEAF, COLOR, FRUIT AND CULTURE AND ONLY AFTER APPROVAL OF THE LANDSCAPE ARCHITECT.
 - TREE STAKING IS NOT RECOMMENDED WITHIN A 10m RADIUS OF THE PLAY EQUIPMENT.
- SOD & SEED NOTES:**
- SODDED AND SEEDED AREAS SHALL HAVE A MINIMUM 150mm TOPSOIL.
 - ALL SEED MUST BE FROM A RECOGNIZED SEED FIRM, MEETING THE REQUIREMENTS FOR THE SEEDS ACT FOR CANADA NO. 1 SEED. SEED SHALL BE CERTIFIED NO. 1 GRADE. A GERMINATION TEST MAY BE REQUESTED AND ALL LAWN SEED MUST COMPLY WITH FEDERAL AND PROVINCIAL SEED LAWS.
 - INSTALL STANDARD MIXTURE BY MECHANICAL SEEDING. USE BIODEGRADABLE EROSION CONTROL MAT AS DIRECTED BY LANDSCAPE ARCHITECT TO RETAIN SEED ON STEEP SLOPES (OVER 3:1 UNTIL ESTABLISHED).
 - PLANT SEED AT A DEPTH EQUAL TO THE WIDEST THICKNESS OF THE SEED. GENERALLY THIS IS 6mm (1/4") OR AS PER SUPPLIERS RECOMMENDATIONS.
 - GENTLY TAMP OR ROLL THE SEEDBED AND DO NOT COMPACT THE SOIL. EXCESSIVE FORCE WILL DESTROY THE SOIL STRUCTURE AND INHIBIT GERMINATION.
 - CUT THE GRASS TO 50mm WHENEVER IT REACHES THE HEIGHT OF 70mm. REMOVE CLIPPINGS THAT WILL SMOOTH GRASS.
 - SODDED AND SEEDED AREAS WILL BE ACCEPTED BY THE LANDSCAPE ARCHITECT FOLLOWING PERFORMANCE ACCEPTANCE, PROVIDED:
 - SEEDING AREAS ARE PROPERLY ESTABLISHED.
 - TURF IS FREE OF DEAD SPOTS AND WEEDS.
 - NO SURFACE SOIL IS VISIBLE WHEN GRASS HAS BEEN CUT TO A HEIGHT OF 50mm
 - TURF AREAS HAVE BEEN CUT NO LESS THAN TWICE (MINIMUM), THE LAST CUT BEING CARRIED OUT WITHIN 24 HOURS PRIOR TO THE ACCEPTANCE INSPECTION.



NAK design strategies
 1285 WELLINGTON STREET, OTTAWA, ON K1Y 3A8 CANADA
 T 613.237.2345 F 613.237.6423 NAKDESIGNSTRATEGIES.COM
 Project

SCHLEGEL VILLAGES OTTAWA

Title		LANDSCAPE PLAN
Date	Dec/22	Sheet
Scale	1:400	L-01
Drawn	SH	
Checked	SC	
Job No.	21-193	

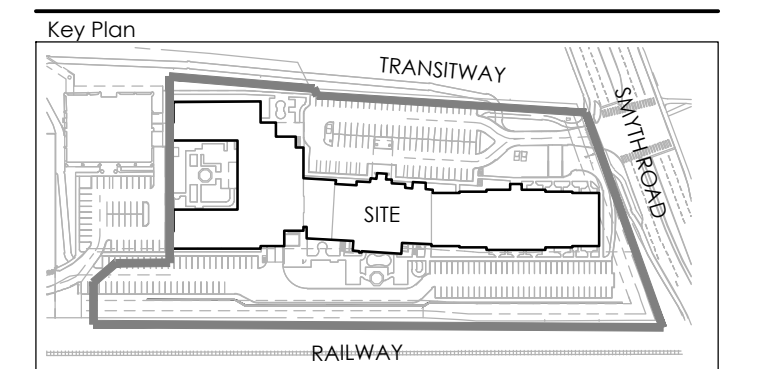


KEY	QTY.	BOTANICAL NAME	NATIVE [N]	COMMON NAME	CAL./HT.	ROOT
PLANT LIST						
LARGE/MEDIUM DECIDUOUS TREES						
*INDICATES DROUGHT-RESISTANT SPECIES						
AR	5	*ACER RUBRUM	N	RED MAPLE	60	W.B.
AS	6	*ACER SACCHARUM	N	SUGAR MAPLE	60	W.B.
GB	4	GINKGO BILOBA		GINKGO	60	W.B.
FS	7	FAGUS SYLVATICA 'DAWYCK PURPLE'		DAWYCK PURPLE BEECH	60	W.B.
GT	4	GLEDISIA TRIACANTHOS 'SHADEMASTER'		SHADEMASTER LOCUST	60	W.B.
QR	3	*QUERCUS RUBRA	N	RED OAK	60	W.B.
QM	5	*QUERCUS MACROCARPA	N	BUR OAK	60	W.B.
TC	2	TILIA CORDATA		LITTLELEAF LINDEN	60	W.B.
	36					
SMALL DECIDUOUS TREES						
*INDICATES DROUGHT-RESISTANT SPECIES						
AC	7	*AMELANCHIER CANADENSIS	N	SERVICEBERRY	60	W.B.
AP	1	*ACER PALMATUM VAR. DISSECTUM		JAPANESE MAPLE	40	B&B
PC	14	PYRUS CALLERYANA 'CAPITAL'		CAPITAL PEAR	60	W.B.
SR	1	SYRINGA RETICULATA		JAPANESE LILAC	60	W.B.
	23					
TREE FORM SHRUBS						
Cp	1	*CORNUS KOUSA 'SATOMI'		SATOMI FLOWERING DOGWOOD	40	B&B
Hg	5	*HYDRANGEA PANICULATA 'GRANDIFLORA'		FREE GEE HYDRANGEA	40	B&B
	6					
GRASSES						
*INDICATES DROUGHT-RESISTANT SPECIES						
ca	209	*CALAMAGROSTIS ACUTIFOLIA 'KARL FORESTER'		KARL FORESTER REED GRASS	125cm	1 GAL.
cm	93	*CAEXA MORROWI 'ICE DANCE'		ICE DANCE SEDGE	30cm	1 GAL.
		*NEEDS TO BE WATERED REGULARLY UNTIL ESTABLISHED, DROUGHT-RESISTANT ONCE ESTABLISHED				
fg	12	FESTUCA GLAUCA 'BEYOND BLUE'		BEYOND BLUE FESCUE	40cm	1 GAL.
pa	87	*PENNSETUM ALOPECUROIDES 'LITTLE BUNNY'		LITTLE BUNNY FOUNTAIN GRASS	40cm	1 GAL.
	401	*NEEDS TO BE WATERED REGULARLY UNTIL ESTABLISHED, DROUGHT-RESISTANT ONCE ESTABLISHED				
PERENNIALS						
*INDICATES DROUGHT-RESISTANT SPECIES						
ag	19	*AGASTACHE FOENICULUM 'BLUE FORTUNE'		ANISE HYSSOP	60cm	1 GAL.
ah	54	*ANEMONE HEPHENENS VAR. JAPONICA 'PAMINA'		JAPANESE ANEMONE	60cm	1 GAL.
bh	38	BRUNNERA MACROPHYLLA 'JACK FROST'		SIBERIAN BUGLOSS	40cm	1 GAL.
cc	41	CAMPANULA CARPATICA 'BLUE CLIPS'		CARPATIAN BELL FLOWER	25cm	1 GAL.
cv	35	*COREOPSIS VERTICILLATA 'MOONBEAM'		THREADED TICKSEED	60cm	1 GAL.
gd	35	*RUBEBELIA HIRTA	N	GLORIOSA DASY	60cm	1 GAL.
ep	33	ECHINACEA PURPUREA 'GREEN JEWEL'		GREEN JEWEL CONEFLOWER	60cm	1 GAL.
gr	122	*GERANIUM 'ROZANNE'		GERANIUM ROZANNE	40cm	1 GAL.
hp	18	FRAGARIA VIRGINIANA	N	VIRGINIA STRAWBERRY	40cm	1 GAL.
hf	49	*HEUCHERA X 'FOREVER PURPLE'		FOREVER PURPLE CORAL BELLS	25cm	1 GAL.
hp	105	*HEMEROCALLIS 'STELLA D'ORO'		STELLA D'ORO DAYLILY	50cm	1 GAL.
hg	16	*HOSTA 'BIG DADDY'		BIG DADDY HOSTA	65cm	1 GAL.
hm	27	*HOSTA 'AUGUST MOON'		AUGUST MOON HOSTA	45cm	1 GAL.
ir	19	IRIS PALLIDA 'ARGENTA VARIEGATA'		BEARED IRIS	60cm	1 GAL.
iv	36	IRIS VERSICOLOR	N	BLUE FLAG IRIS	70cm	1 GAL.
jb	8	*STACHYS BYZANTINA 'HELEN VON STEIN'		LAMB'S EAR	25cm	1 GAL.
sm	77	*SPECTABILE 'AUTUMN JOY' HERBSTFREUDE		AUTUMN JOY SEDUM	60cm	1 GAL.
dp	26	*PEROVSKIA ATRIPLICIFOLIA		RUSSIAN SAGE	90cm	1 GAL.
pv	22	*PHYSTOCYGA VIRGINIANA 'VIVID'		OBSEDIANT PLANT	60cm	1 GAL.
tc	19	*TROLLIUS CULTORUM 'NEW MOON'		GLOBEFLOWER	40cm	1 GAL.
wf	36	*WEIGELA FLORIDA 'MIDNIGHT WINE'		MIDNIGHT WINE WEIGELA	30cm	1 GAL.
	852					
DECIDUOUS SHRUBS						
*INDICATES DROUGHT-RESISTANT SPECIES						
Cs	29	*CORNUS SERICEA 'ARCTIC FIRE'		RED OSIER DOGWOOD	200cm	1 GAL.
Ea	7	*DWARF BURNING BUSH		EUONYMUS ALATUS 'COMPACTUS'	2m	1 GAL.
Hh	41	HYDRANGEA PANICULATA 'BOBO'		BOBO HYDRANGEA	80cm	1 GAL.
Po	10	*PHYTOSCARPUS OPULIFOLIUS 'DART'S GOLD'		DART'S GOLD NINEBARK	125cm	1 GAL.
Rr	36	ROSA 'MERBIDAY'		OSO EASY DOUBLE PINK ROSE	60cm	1 GAL.
		*NEEDS TO BE WATERED REGULARLY UNTIL ESTABLISHED, BUT DROUGHT-RESISTANT ONCE ESTABLISHED				
Sj	76	*SPIREA JAPONICA 'RAINBOW FIZZ'		RAINBOW FIZZ SPIRAEA	80cm	1 GAL.
	199					
CONIFEROUS SHRUBS						
*INDICATES DROUGHT-RESISTANT SPECIES						
Cg	2	*CHAMAECYPARIS PISIFERA 'GOLDEN MOPS'		GOLDEN MOP THREADLEAF FALSECYPRESS	80cm	1 GAL.
Jh	5	*JUNIPERUS HORIZONTALIS 'BAR HARBOR'		BAR HARBOR JUNIPER	20cm	1 GAL.
Jl	5	*JUNIPERUS HORIZONTALIS 'LIMEGLOW'		LIMEGLOW CREEPING JUNIPER	80cm	1 GAL.
Js	21	*JUNIPERUS SABINA 'BUFFALO'		BUFFALO JUNIPER	30cm	1 GAL.
Pm	39	*PINUS MUGO VAR. PUMILIO		DWARF MUGO VAR. PUMILIO	125cm	1 GAL.
Th	8	TAXUS X MEDIA 'HICKS'		HICKS' YEW	250cm	1 GAL.
Tc	28	*TAXUS CUSPIDATA 'NANA'		DWARF JAPANESE YEW	125cm	1 GAL.
	108					

- PLANTING NOTES:**
- CONTRACTOR TO VERIFY LOCATION OF ALL SERVICES PRIOR TO ANY EXCAVATION.
 - LOCATIONS OF ALL PLANT MATERIALS TO BE STAKED BY THE CONTRACTOR AND VERIFIED IN THE FIELD BY LANDSCAPE ARCHITECT PRIOR TO THE EXCAVATION OF PITS.
 - ALL PLANT MATERIAL SHALL BE NURSERY GROWN STOCK UNLESS OTHERWISE NOTED.
 - DECIDUOUS TREES TO HAVE A MINIMUM 1800 CLEAR STEM ABOVE GRADE.
 - ALL PLANT MATERIAL SHALL BE WARRANTED FOR TWO YEARS FROM THE DATE OF SUBSTANTIAL COMPLETION AS DETERMINED BY THE LANDSCAPE ARCHITECT.
 - ALL STEEL T-BARS TO BE REMOVED AT THE ONE YEAR INTERIM INSPECTION UNLESS OTHERWISE DIRECTED BY THE LANDSCAPE ARCHITECT.
 - CONTRACTOR TO REINSTATE ALL EXISTING AREAS DAMAGED BY HIS WORK TO THE SATISFACTION OF THE LANDSCAPE ARCHITECT.
 - PERIODIC REVIEWS OF PLANTING SHALL BE CARRIED OUT BY THE LANDSCAPE ARCHITECT.
 - ACER RUBRUM, QUERCUS RUBRA AND CELTIS OCCIDENTALIS TO BE SPRING DUG SPECIMENS AND PLANTING IN THE SPRING ONLY.
 - ANY PROPOSED SUBSTITUTIONS OF PLANT SPECIES SHALL BE MADE WITH PLANTS OF EQUIVALENT OVERALL FORM, HEIGHT, BRANCHING HABIT, FLOWER, LEAF, COLOR, FRUIT AND CULTURE AND ONLY AFTER APPROVAL OF THE LANDSCAPE ARCHITECT.
 - TREE STAKING IS NOT RECOMMENDED WITHIN A 10m RADIUS OF THE PLAY EQUIPMENT.

- SOD & SEED NOTES:**
- SODDED AND SEEDED AREAS SHALL HAVE A MINIMUM 150mm TOPSOIL.
 - ALL SEED MUST BE FROM A RECOGNIZED SEED FIRM, MEETING THE REQUIREMENTS FOR THE SEEDS ACT FOR CANADA AND NO. 1 SEED. SEED SHALL BE CARRIED NO. 1 GRADE. A GERMINATION TEST MAY BE REQUESTED AND ALL LAWN SEED MUST COMPLY WITH FEDERAL AND PROVINCIAL SEED LAWS.
 - INSTALL STANDARD MIXTURE BY MECHANICAL SEEDING. USE BIODEGRADABLE EROSION CONTROL MAT AS DIRECTED BY LANDSCAPE ARCHITECT TO RETAIN SEED ON STEEP SLOPES (OVER 3:1 UNTIL ESTABLISHED).
 - PLANT SEED AT A DEPTH EQUAL TO THE WIDEST THICKNESS OF THE SEED. GENERALLY THIS IS 6mm (1/4") OR AS PER SUPPLIER'S RECOMMENDATIONS.
 - GENTLY TAMP OR ROLL THE SEEDBED AND DO NOT COMPACT THE SOIL. EXCESSIVE FORCE WILL DESTROY THE SOIL STRUCTURE AND INHIBIT GERMINATION.
 - CUT THE GRASS TO 50mm WHENEVER IT REACHES THE HEIGHT OF 70mm. REMOVE CLIPPINGS THAT WILL SMOTHER GRASS.
 - SODDED AND SEEDED AREAS WILL BE ACCEPTED BY THE LANDSCAPE ARCHITECT FOLLOWING PERFORMANCE ACCEPTANCE, PROVIDED:
 - SEEDED AREAS ARE PROPERLY ESTABLISHED.
 - TURF IS FREE OF DEAD SPOTS AND WEEDS.
 - NO SURFACE SOIL IS VISIBLE WHEN GRASS HAS BEEN CUT TO A HEIGHT OF 50mm
 - TURF AREAS HAVE BEEN CUT NO LESS THAN TWICE (MINIMUM), THE LAST CUT BEING CARRIED OUT WITHIN 24 HOURS PRIOR TO THE ACCEPTANCE INSPECTION.

Contractor shall check all dimensions on the work and report any discrepancy to the Landscape Architect before proceeding. All drawings and specifications are the property of the Landscape Architect and must be returned at the completion of the work. This drawing is not to be used for construction until signed by the Landscape Architect.



LEGEND

PROPERTY LINE

FENCING

- 2.0m HT. METAL FENCE
- 1.2m HT. WOODEN FENCE
- TREE PROTECTION FENCING

PLANTING

- EXISTING CONIFEROUS TREE
- LARGE DECIDUOUS TREE
- SMALL DECIDUOUS TREE
- TREE FORM SHRUB/SMALL COLUMNAR TREE
- SOD
- STONEDUST PAVING
- CONIFEROUS SHRUB
- DECIDUOUS SHRUB
- GRASSES / PERENNIALS

SURFACING

- C.I.P. CONCRETE
- CONCRETE PATH

AMENITIES

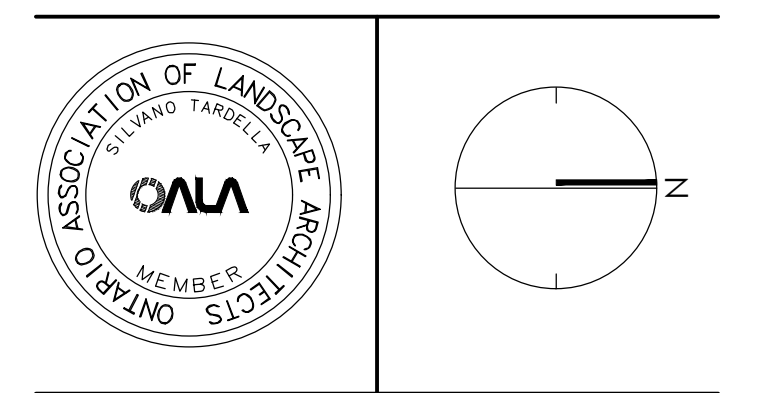
- BENCH
- RAISED PLANTERS (BY OTHERS)
- BIKE RACK
- ARMOUR STONE BOULDER
- GAZEBO

PLANTING KEY

- TREE SPECIES
- QUANTITY
- SHRUB SPECIES
- QUANTITY

No.	Description	Date
7	Issued for Third Submission	Dec/14/22
6	Issued for Second Submission	Apr/8/22
5	Issued for Client Review	Mar/24/22
4	Issued for Coordination	Mar/17/22
3	Issued for Client Review	Feb/4/22
2	Issued for First Submission	Oct/25/21
1	Issued for Coordination	Oct/18/21

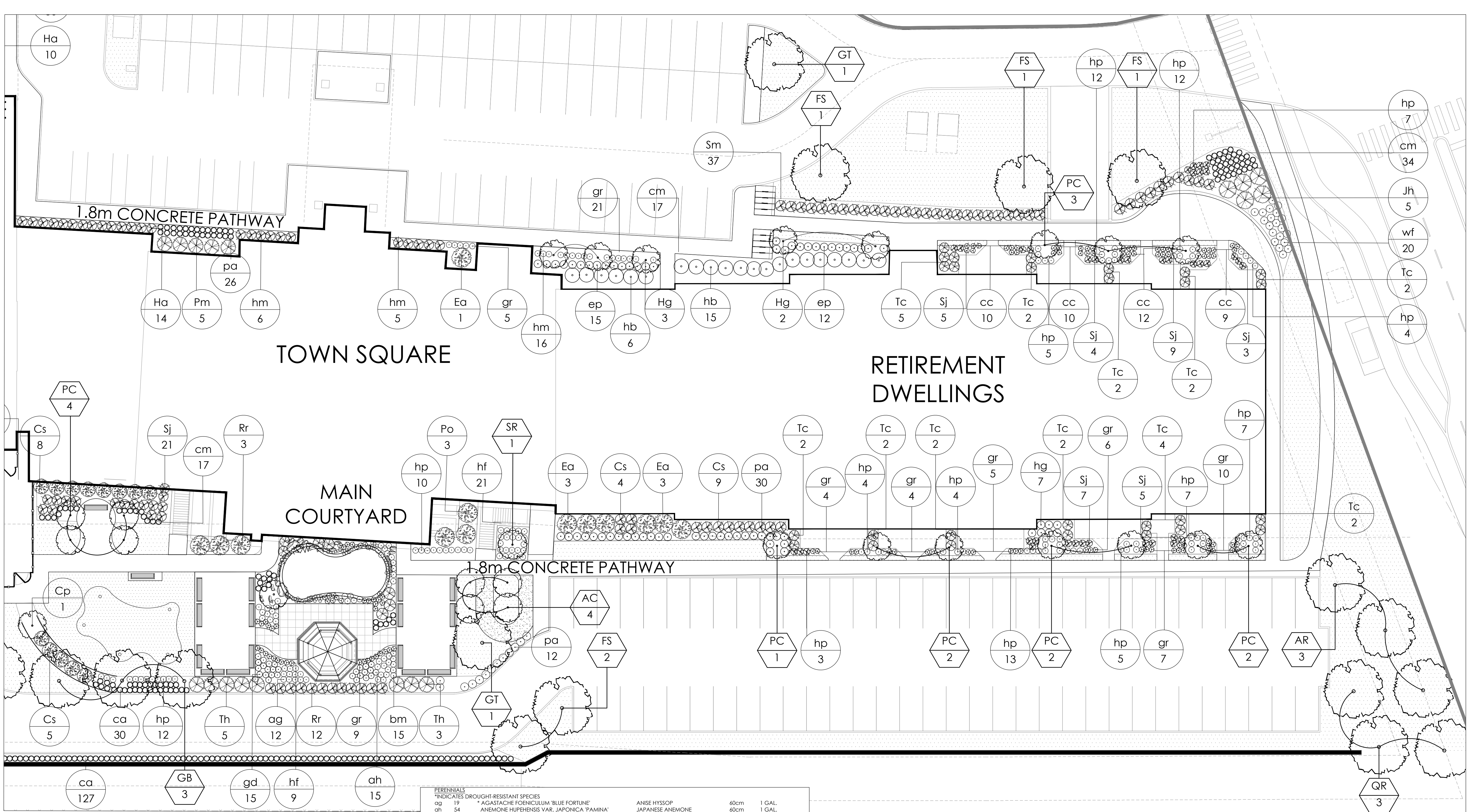
Revision
City Approval Stamp



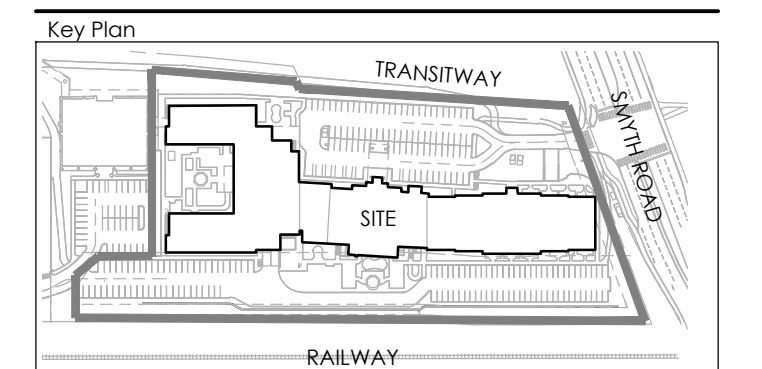
NAK design strategies

1285 WELLINGTON STREET, OTTAWA, ON K1Y 3A8 CANADA
 T 613.237.2345 F 613.237.4423 NAKDESIGNSTRATEGIES.COM

SCHLEGEL VILLAGES OTTAWA



Contractor shall check all dimensions on the work and report any discrepancy to the Landscape Architect before proceeding. All drawings and specifications are the property of the Landscape Architect and must be returned at the completion of the work. This drawing is not to be used for construction until signed by the Landscape Architect.



LEGEND

PROPERTY LINE

FENCING

- 2.0m HT. METAL FENCE
- 1.2m HT. WOODEN FENCE
- TREE PROTECTION FENCING

PLANTING

- EXISTING CONIFEROUS TREE
- LARGE DECIDUOUS TREE
- SMALL DECIDUOUS TREE
- TREE FORM SHRUB/SMALL COLUMNAR TREE
- SOD
- STONEDUST PAVING
- CONIFEROUS SHRUB
- DECIDUOUS SHRUB
- GRASSES / PERENNIALS

SURFACING

- C.I.P. CONCRETE
- CONCRETE PATH

AMENITIES

- BENCH
- RAISED PLANTERS (BY OTHERS)
- BIKE RACK
- ARMOUR STONE BOULDER
- GAZEBO

PLANTING KEY

- XX - TREE SPECIES
- 00 - QUANTITY
- XX - SHRUB SPECIES
- 00 - QUANTITY

7	Issued for Third Submission	Dec/14/22
6	Issued for Second Submission	Apr/8/22
5	Issued for Client Review	Mar/24/22
4	Issued for Coordination	Mar/17/22
3	Issued for Client Review	Feb/4/22
2	Issued for First Submission	Oct/25/21
1	Issued for Coordination	Oct/18/21
No.	Description	Date
Revision		
City Approval Stamp		

PLANT LIST

KEY	QTY.	BOTANICAL NAME	NATIVE (N)	COMMON NAME	CAL/HT.	ROOT
					(mm/cm)	
LARGE/MEDIUM DECIDUOUS TREES						
"INDICATES DROUGHT-RESISTANT SPECIES"						
AR	5	* ACER RUBRUM	N	RED MAPLE	60	W.B.
AS	6	* ACER SACCHARUM	N	SUGAR MAPLE	60	W.B.
GB	4	GINKGO BILOBA		GINKGO	60	W.B.
FS	7	FAGUS SYLVATICA 'DAWYCK PURPLE'		DAWYCK PURPLE BEECH	60	W.B.
GT	4	GLEDITSIA TRIACANTHOS 'SHADEMASTER'		SHADEMASTER LOCUST	60	W.B.
QR	3	* QUERCUS RUBRA	N	RED OAK	60	W.B.
QM	5	* QUERCUS MACROCARPA	N	BUR OAK	60	W.B.
TC	2	TILIA CORDATA		LITTLELEAF LINDEN	60	W.B.
SMALL DECIDUOUS TREES						
"INDICATES DROUGHT-RESISTANT SPECIES"						
AC	7	* AMELANCHIER CANADENSIS	N	SERVICEBERRY	60	W.B.
AP	1	* ACER PALMATUM VAR. DISSECTUM		JAPANESE MAPLE	40	B&B
PC	14	PIRUS CALLERYANA 'CAPITAL'		CAPITAL PEAR	60	W.B.
SR	1	SYRINGA RETICULATA		JAPANESE LILAC	60	W.B.
TREE FORM SHRUBS						
Cp	1	CORNUS KOUSA 'SATOMI'		SATOMI FLOWERING DOGWOOD	40	B&B
Hg	5	HYDRANGEA PANICULATA 'GRANDIFLORA'		PIEE GEE HYDRANGEA	40	B&B
GRASSES						
"INDICATES DROUGHT-RESISTANT SPECIES"						
ca	209	* CALAMAGROSTIS ACUTIFOLIA 'KARL FORESTER'		KARL FORESTER REED GRASS	125cm	1 GAL.
cm	93	* CAREX MORROWII 'ICE DANCE'		ICE DANCE SEDGE	30cm	1 GAL.
pa	12	* PENSTEMON ALPINE 'BEYOND BLUE'		BEYOND BLUE FESCUE	40cm	1 GAL.
fb	87	* PENSTEMON ALPINE 'LITTLE BUNNY'		LITTLE BUNNY FOUNTAIN GRASS	40cm	1 GAL.
401				NEEDS TO BE WATERED REGULARLY UNTIL ESTABLISHED, DROUGHT-RESISTANT ONCE ESTABLISHED		

PERENNIALS

"INDICATES DROUGHT-RESISTANT SPECIES"

ag	19	* AGASTACHE FOENICULUM 'BLUE FORTUNE'		AGASTACHE 'BLUE FORTUNE'	40cm	1 GAL.
ah	54	ANEMONE HUPEHENSIS VAR. 'JAPONICA 'PAMINA'		JAPANESE ANEMONE	60cm	1 GAL.
brm	38	BRUNNERA MACROPHYLLA 'JACK FROST'		SIBERIAN BUGLOSS	40cm	1 GAL.
cc	41	* CAMPANULA CARPATICA 'BLUE CLIPS'		CARPATHIAN BELLFLOWER	25cm	1 GAL.
cv	35	* COREOPSIS VERTICILLATA 'MOONBEAM'		THREADLEAF TICKSEED	60cm	1 GAL.
gd	35	* RUDBECKIA HIRTA		N GLORIOSA DAISY	60cm	1 GAL.
ep	33	ECHINACEA PURPUREA 'GREEN JEWEL'		GREEN JEWEL CONEFLOWER	60cm	1 GAL.
gr	122	* GERANIUM 'ROZANNE'		GERANIUM ROZANNE	40cm	1 GAL.
fv	18	FRAGARIA VIRGINIANA	N	VIRGINIA STRAWBERRY	40cm	1 GAL.
hf	49	* HEUCHERA X 'FOREVER PURPLE'		FOREVER PURPLE CORAL BELLS	25cm	1 GAL.
hg	16	* HEMEROCALLIS 'STELLA D'ORO'		STELLA D'ORO DAYLILY	50cm	1 GAL.
hm	27	* HOSTA 'BIG DADDY'		BIG DADDY HOSTA	65cm	1 GAL.
ht	27	* HOSTA 'AUGUST MOON'		AUGUST MOON HOSTA	45cm	1 GAL.
is	19	IRIS PALLIDA 'ARGENTA VARIEGATA'		BEARDED IRIS	60cm	1 GAL.
iv	36	IRIS VERSICOLOR	N	BLUE FLAG IRIS	70cm	1 GAL.
sb	8	* STACHYS BYZANTINA 'HELEN VAN STEIN'		LAMB'S EAR	25cm	1 GAL.
sm	77	* SPECTABILE 'AUTUMN JOY' HERBSTFREUDE		AUTUMN JOY SEDUM	60cm	1 GAL.
sp	26	* SPIROSTACHYON 'RUBRA'		RUSSIAN SAGE	90cm	1 GAL.
pv	22	* PHYSTOLIGIA VIRGINIANA 'VIVID'		OBEDIENT PLANT	60cm	1 GAL.
tc	19	* TROLLIUS CULTORUM 'NEW MOON'		GLOBEFLOWER	40cm	1 GAL.
wf	852	* WEIGELA FLORIDA 'MIDNIGHT WINE'		MIDNIGHT WINE WEIGELA	30cm	1 GAL.

DECIDUOUS SHRUBS

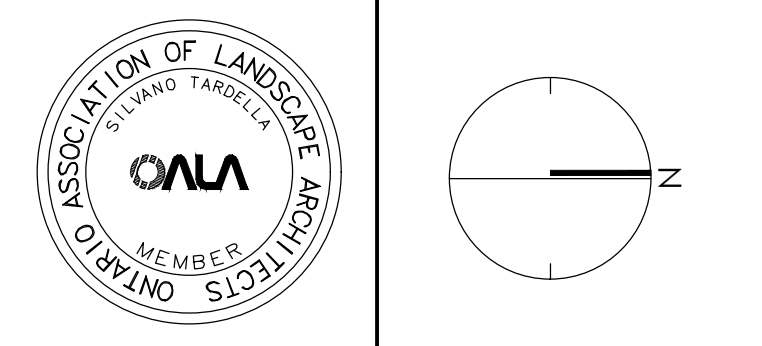
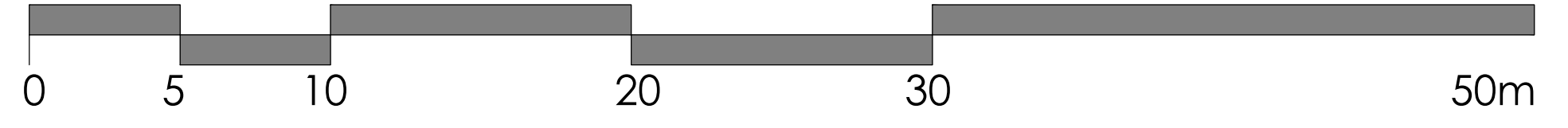
"INDICATES DROUGHT-RESISTANT SPECIES"

Cs	29	* CORNUS SERICEA 'ARCTIC FIRE'		RED OSIER DOGWOOD	200cm	1 GAL.
Ea	7	* DWARF BURNING BUSH		EUONYMUS ALATUS 'COMPACTUS'	2m	1 GAL.
Hb	61	HYDRANGEA PANICULATA 'BOBO'		BOBO HYDRANGEA	80cm	1 GAL.
Po	10	* PHYSCARPUS OPULOLIFOLIUS 'DARTS GOLD'		DARTS GOLD NINEBARK	125cm	1 GAL.
Rr	36	ROSA 'MERRIFDAY'		OSO EASY DOUBLE PINK ROSE	60cm	1 GAL.
Sj	76	* SPIRAEA JAPONICA 'RAINBOW FIZZ'		NEEDS TO BE WATERED REGULARLY UNTIL ESTABLISHED, BUT DROUGHT-RESISTANT ONCE ESTABLISHED	80cm	1 GAL.
199				RAINBOW FIZZ SPIRAEA		

CONIFEROUS SHRUBS

"INDICATES DROUGHT-RESISTANT SPECIES"

Cg	2	* CHAMAECYPARIS FISIFERA 'GOLDEN MOPS'		GOLDEN MOP THREADLEAF FALSECYPRESS	80cm	1 GAL.
Jh	5	* JUNIPERUS HORIZONTALIS 'BAR HARBOR'		BAR HARBOR JUNIPER	20cm	1 GAL.
Jl	5	* JUNIPERUS HORIZONTALIS 'LIMEGLOW'		LIMEGLOW CREEPING JUNIPER	80cm	1 GAL.
Js	21	* JUNIPERUS SABINA 'BUFFALO'		BUFFALO JUNIPER	30cm	1 GAL.
Pm	39	* PINUS MUGO VAR. 'PUMILO'		DWARF MUGO VAR. PUMILO	125cm	1 GAL.
Th	8	TAXUS X MEDIA 'HICKSII'		HICKS' YEW	250cm	1 GAL.
Tc	28	* TAXUS CUSPIDATA 'NANA'		DWARF JAPANESE YEW	125cm	1 GAL.
108						



NAK design strategies

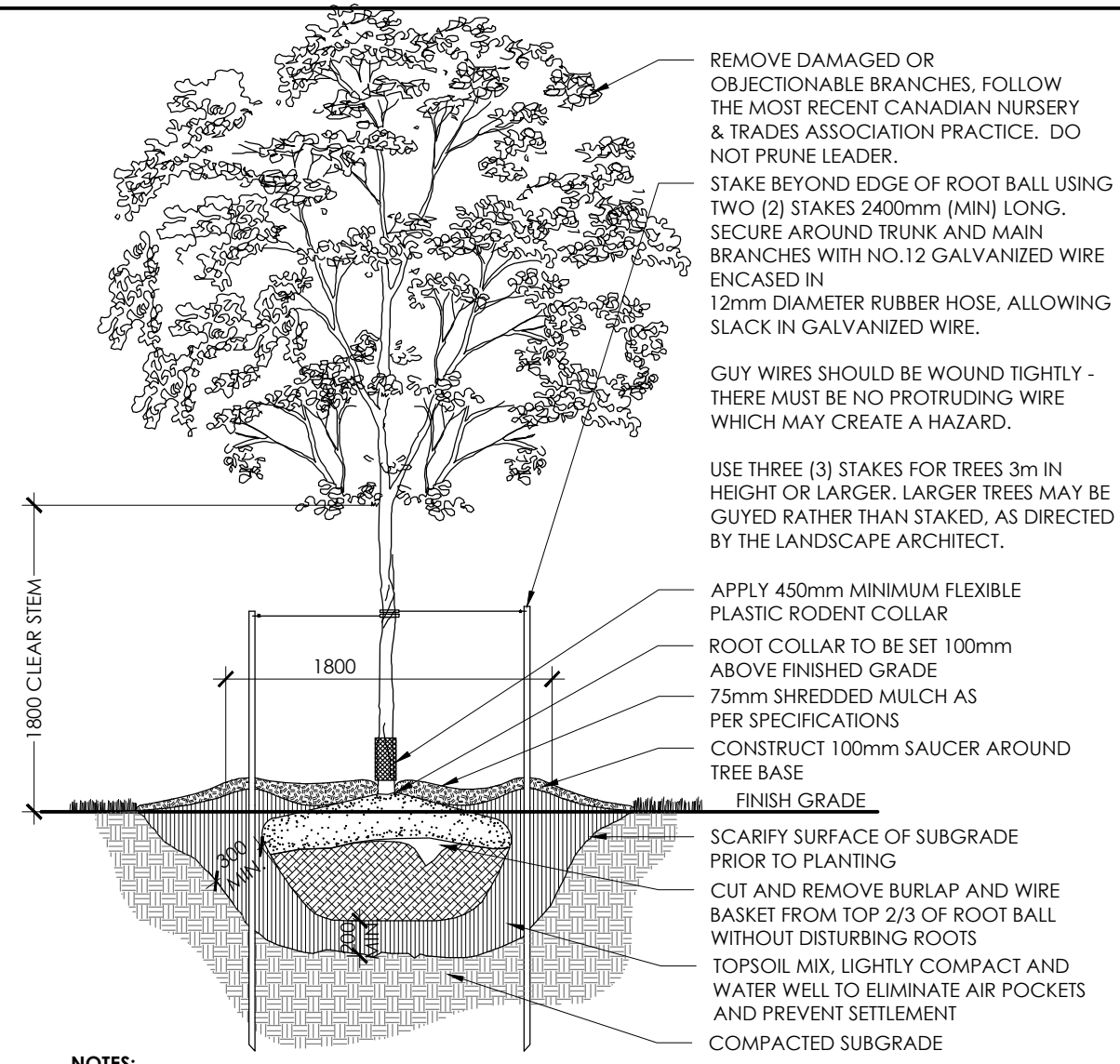
1285 WELLINGTON STREET, OTTAWA, ON K1Y 3A8 CANADA
 T 613.237.2345 F 613.237.4423 NAKDESIGNSTRATEGIES.COM

SCHLEGEL VILLAGES OTTAWA

LANDSCAPE PLAN

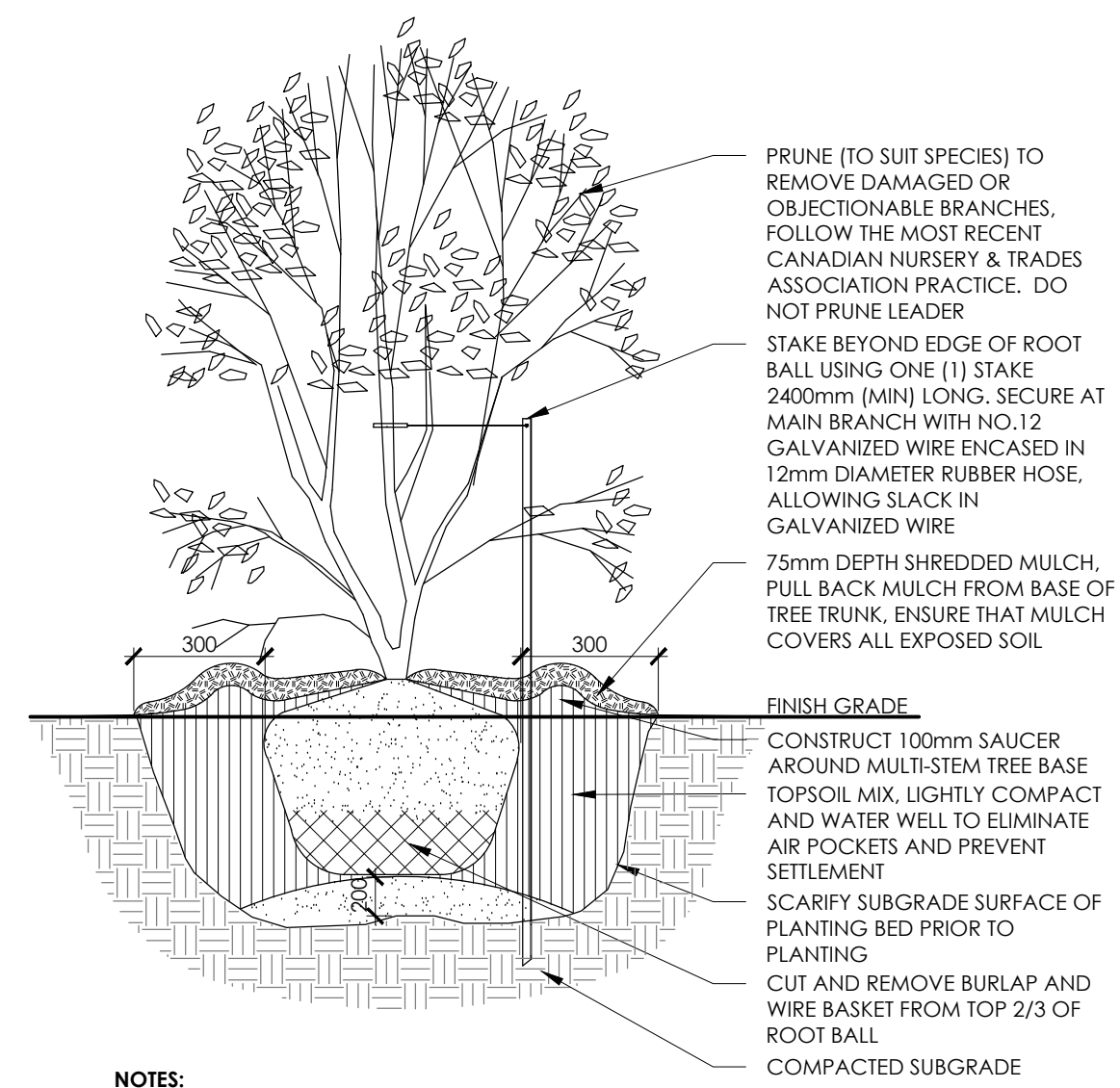
Date	Dec/22	Sheet	
Scale	1:200		
Drawn	SH		
Checked	DC		
Job No.	21-193		

L-03



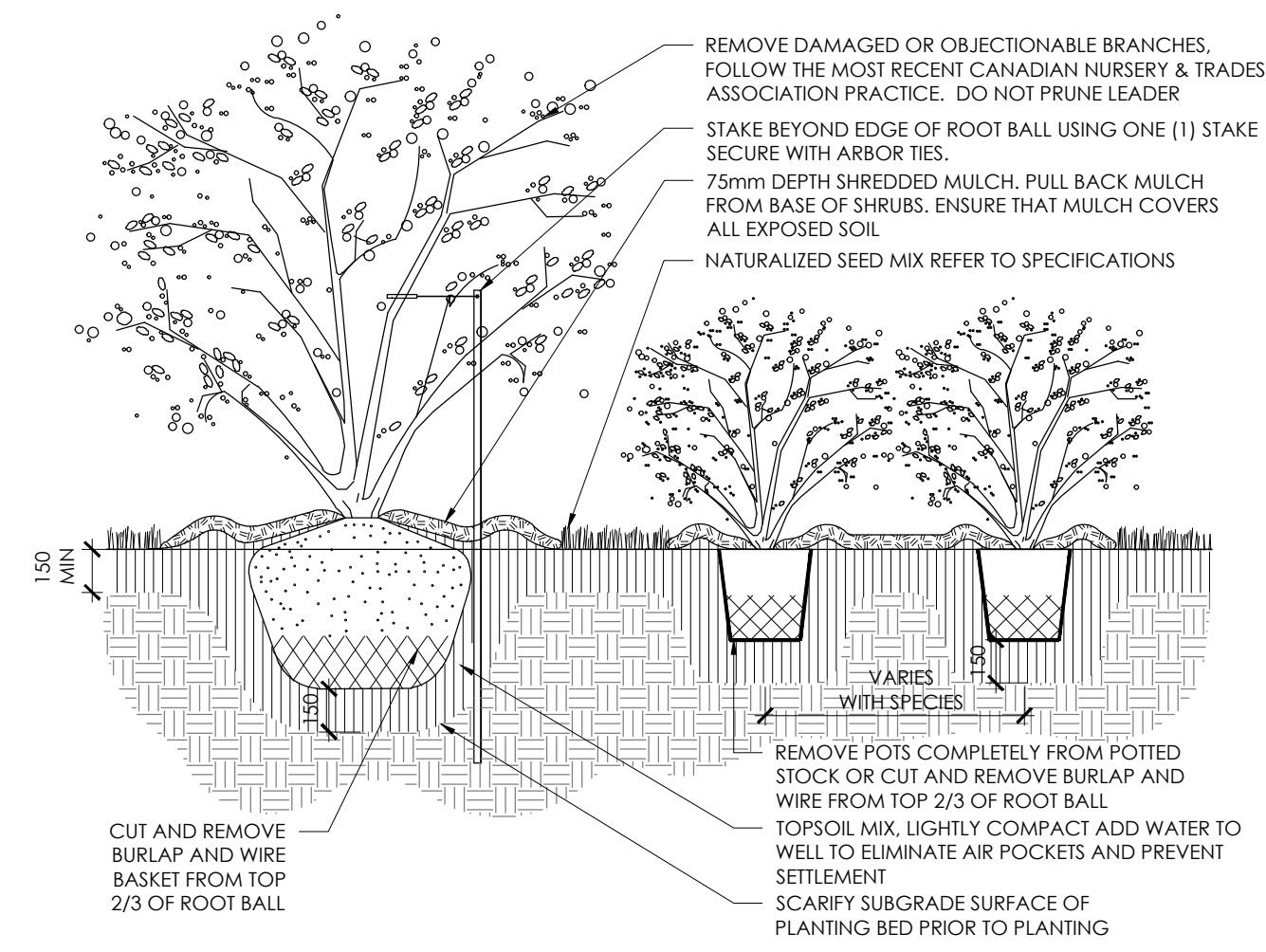
- NOTES:**
1. REMOVE STAKES AND RODENT GUARD AFTER ONE YEAR OR UNTIL TAKEOVER, UNLESS OTHERWISE DIRECTED BY THE LANDSCAPE ARCHITECT.
 2. TOPSOIL MIXTURE AND SHREDDED MULCH AS PER SPECIFICATION
 3. REMOVE TREE WRAP AFTER PLANTING
 4. CALIPER TO BE MEASURED AT THE BASE OF TREE AT ROOT BALL

1 DECIDUOUS TREE PLANTING
N.T.S.



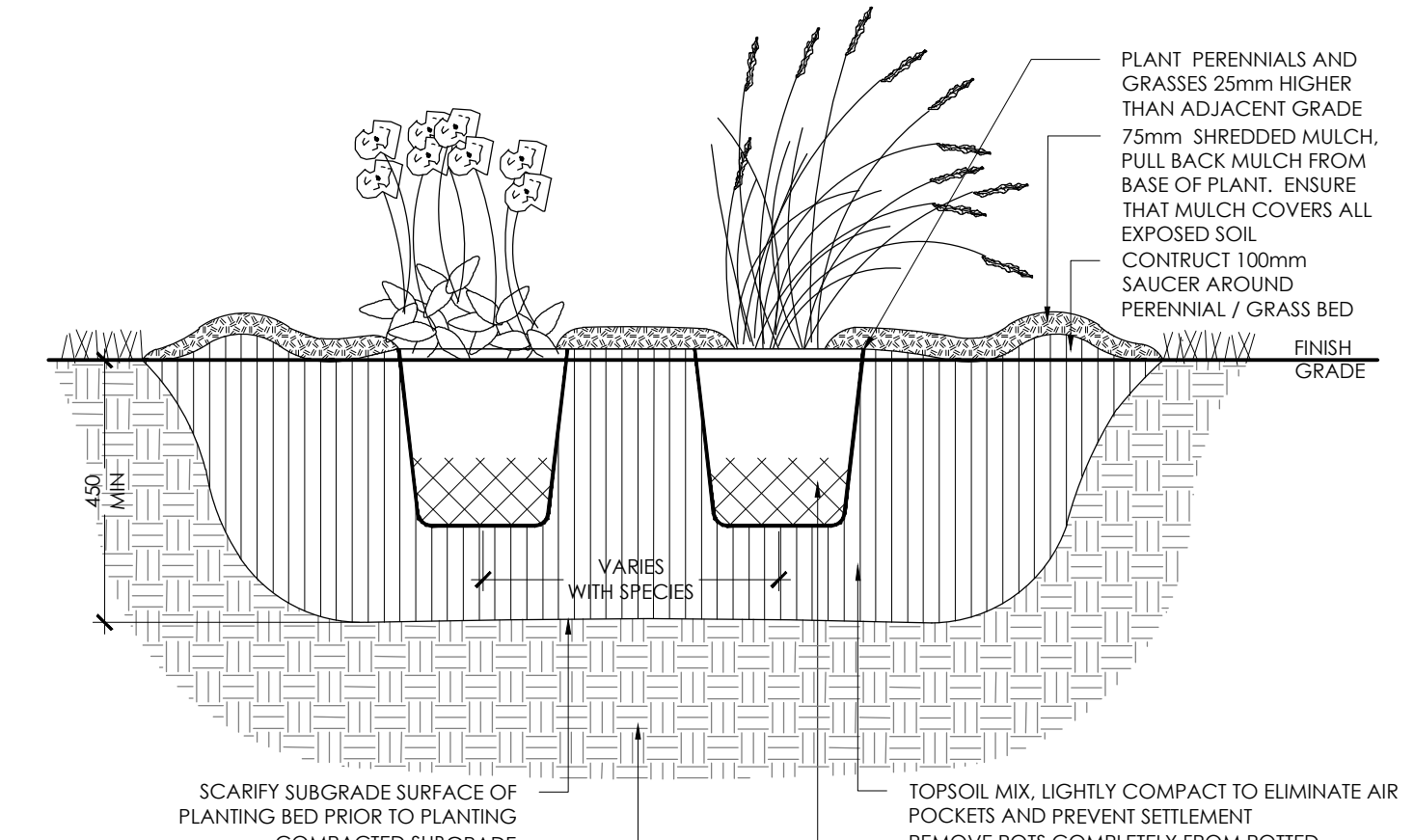
- NOTES:**
1. TOPSOIL MIXTURE AND SHREDDED MULCH AS PER SPECIFICATION.
 2. PROVIDE 100mm HIGH EARTH SAUCER AROUND SHRUB BED.
 3. STAKES TO BE REMOVED AFTER ONE YEAR OR UNTIL TAKEOVER UNLESS OTHERWISE DIRECTED BY LANDSCAPE ARCHITECT.

2 MULTI-STEM TREE PLANTING
N.T.S.



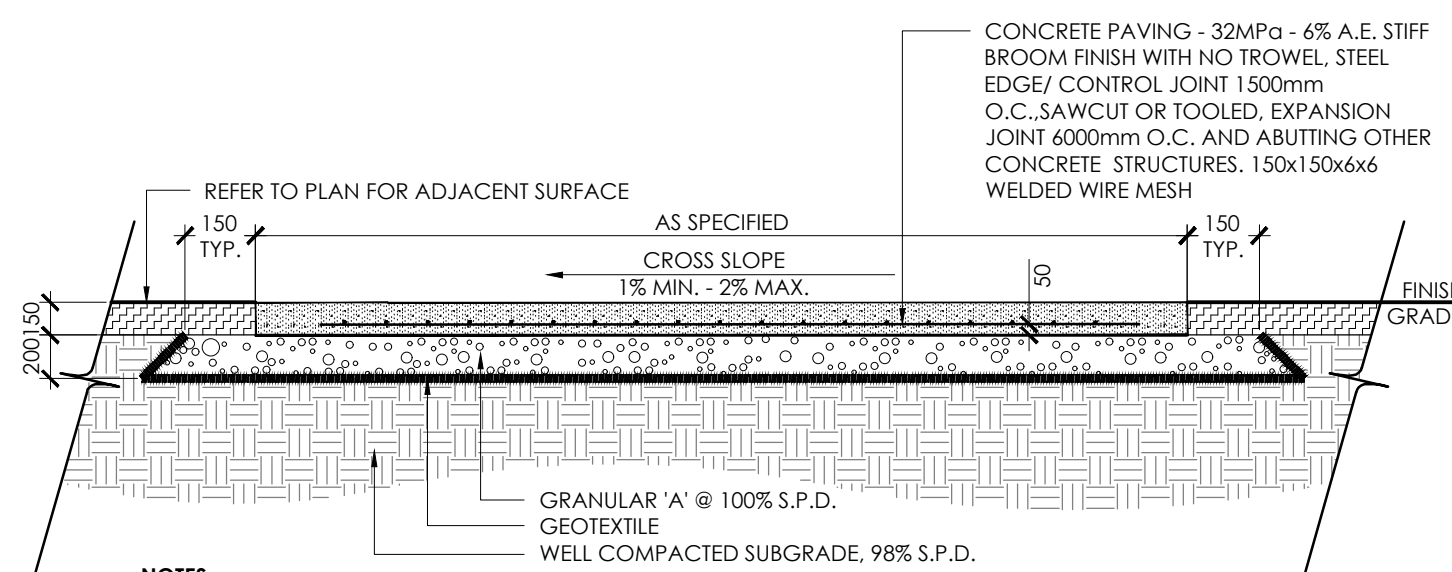
- NOTES:**
1. TOPSOIL MIXTURE AND SHREDDED MULCH AS PER SPECIFICATION.
 2. SHRUBS SPECIFIED TO BE PLANTED SO THAT ROOTS ARE FULLY EXTENDED IN PLANTING HOLE WITH SOIL MIX BACKFILLED CAREFULLY TO PREVENT ROOT DAMAGE.
 3. PROVIDE 100mm HIGH EARTH SAUCER AROUND SHRUB BED.
 4. STAKES TO BE REMOVED AFTER ONE YEAR OR UNTIL TAKEOVER UNLESS OTHERWISE DIRECTED BY LANDSCAPE ARCHITECT.

3 SHRUB BED PLANTING
N.T.S.



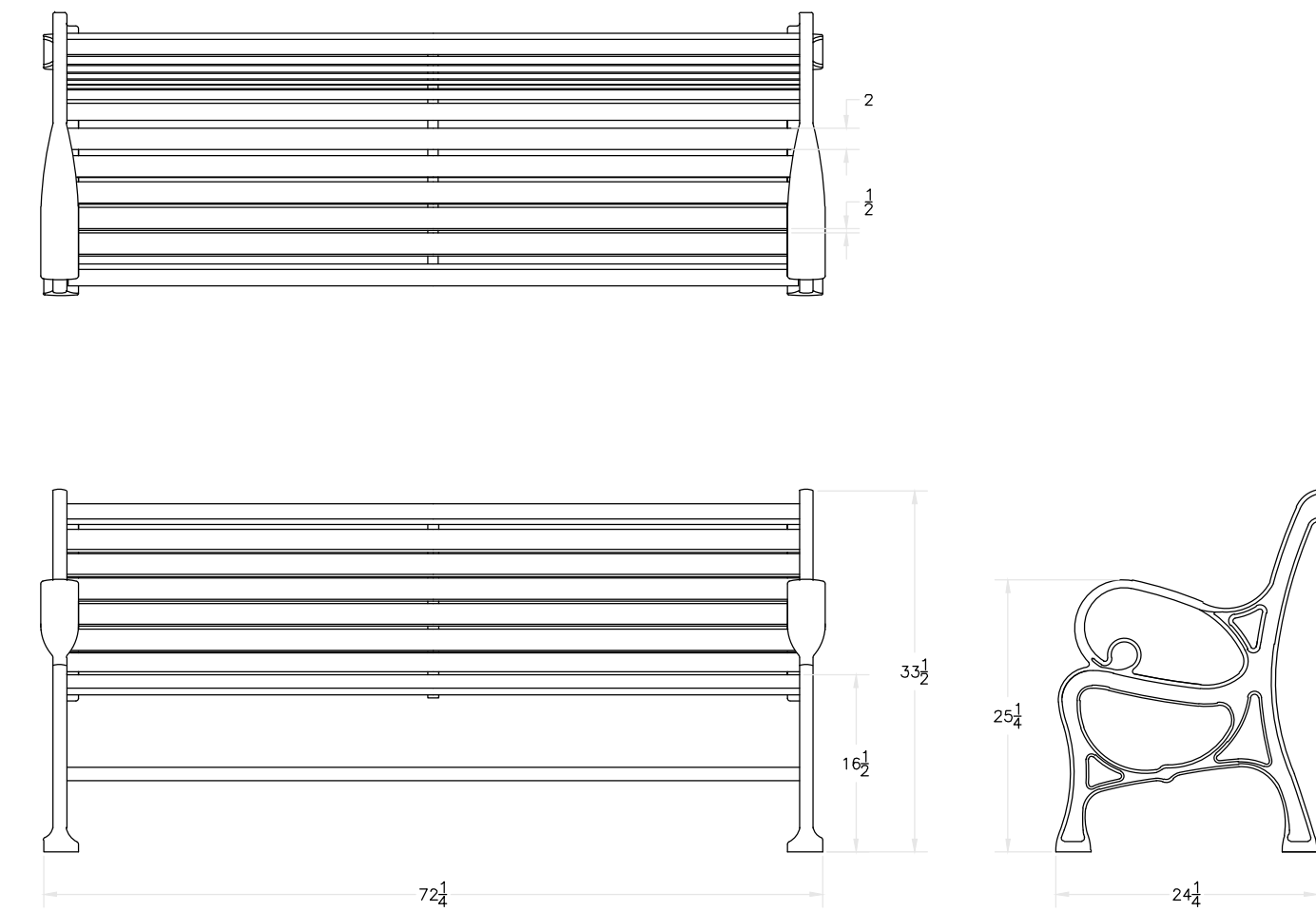
- NOTES:**
1. TOPSOIL MIXTURE AND SHREDDED MULCH AS PER SPECIFICATION.
 2. PROVIDE 100mm HIGH EARTH SAUCER AROUND PERENNIAL/GRASS BED.

4 PERENNIAL AND ORNAMENTAL GRASS PLANTING
N.T.S.



- NOTES:**
1. CONCRETE TO BE 32 MPa CLASS C-2 MEETING THE REQUIREMENTS OF S.P. F-3510 AND PLACED IN ACCORDANCE WITH S.P. F-9040. REFER TO SPECIFICATIONS.
 2. GRANULAR 'A' SHALL MEET THE REQUIREMENTS OF CPSS 1010.
 3. APPROVED NON-WOVEN CLASS 1 GEOTEXTILE AS PER MS-22.15 WHEN WARRANTED BY SOIL CONDITION. SUBJECT TO APPROVAL BY THE LANDSCAPE ARCHITECT.

5 LIGHT DUTY CONCRETE PAVING
N.T.S.



TYPICAL ELEVATION

HERITAGE - PS-635 AL-A
'HAUSER INDUSTRIES INC.'
1-800-268-7328
OR APPROVED ALTERNATE.

- NOTES:**
1. CONTRACTOR TO SECURE BENCHES AS PER MANUFACTURER SPECIFICATIONS.
 2. COLOUR TO BE BRONZE AGE.
 3. IFE SLATS - PROVIDE COLOUR CHART.

6 BENCH
N.T.S.

Contractor shall check all dimensions on the work and report any discrepancy to the Landscape Architect before proceeding. All drawings and specifications are the property of the Landscape Architect and must be returned at the completion of the work. This drawing is not to be used for construction until signed by the Landscape Architect.

No.	Description	Date
7	Issued for Third Submission	Dec/14/22
6	Issued for Second Submission	Apr/8/22
5	Issued for Client Review	Mar/24/22
4	Issued for Coordination	Mar/7/22
3	Issued for Client Review	Feb/4/22
2	Issued for First Submission	Oct/25/21
1	Issued for Coordination	Oct/18/21

Revision
City Approval Stamp

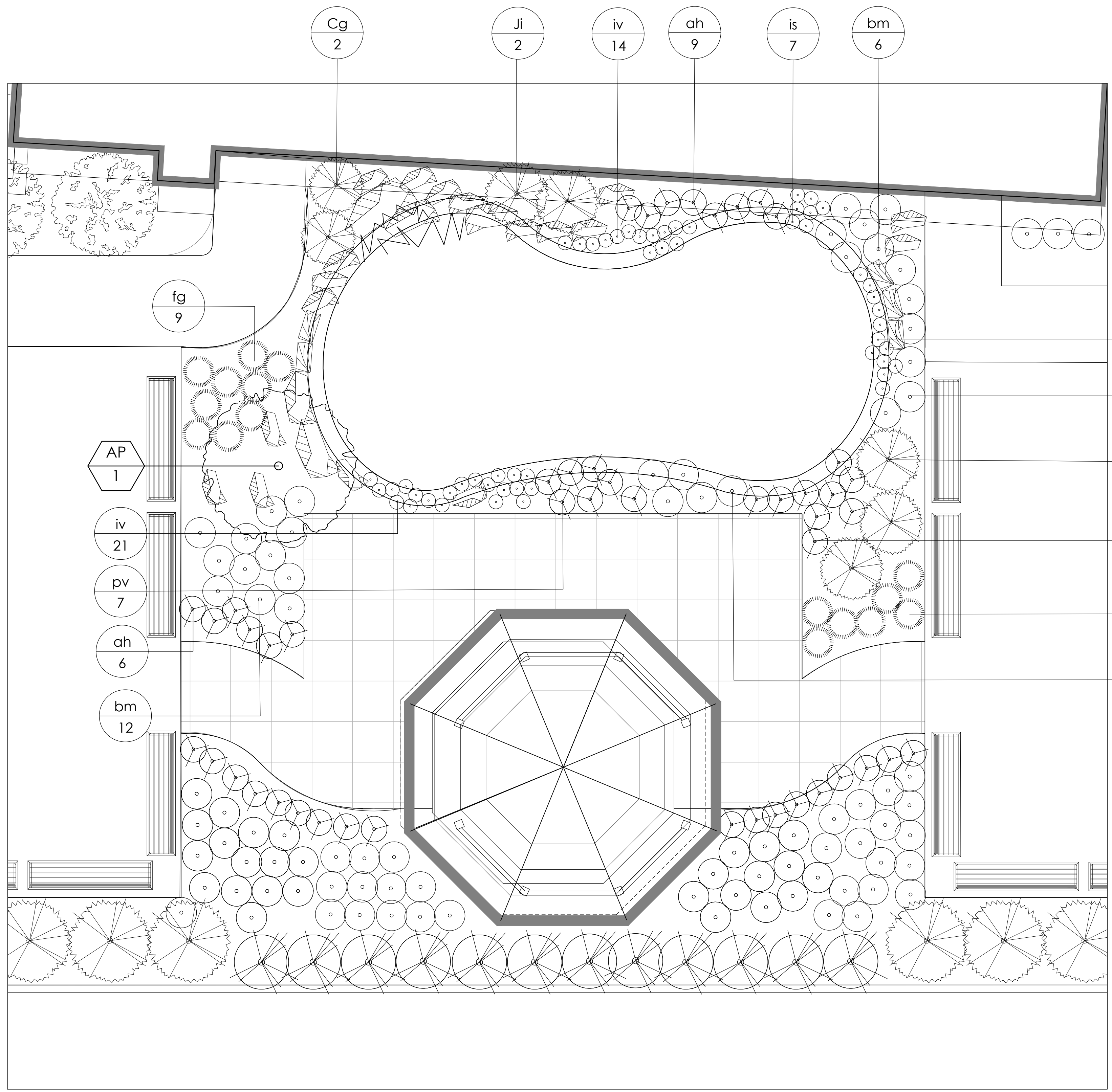


NAK
design strategies
1285 WELLINGTON STREET, OTTAWA, ON K1Y 3A8 CANADA
T 613.237.2345 F 613.237.4423 NAKDESIGNSTRATEGIES.COM
Project

SCHLEGEL VILLAGES OTTAWA

Title	
DETAILS	
Date	Dec/22
Scale	N.T.S.
Drawn	SH
Checked	SC
Job No.	21-193
Sheet	D-01

Contractor shall check all dimensions on the work and report any discrepancy to the Landscape Architect before proceeding. All drawings and specifications are the property of the Landscape Architect and must be used for construction until signed by the Landscape Architect.



KEY	QTY	BOTANICAL NAME	NATIVE (N)	COMMON NAME	CA/HT (mm/cm)	ROOT
PLANT LIST						
LARGE/MEDIUM DECIDUOUS TREES						
*INDICATES DROUGHT-RESISTANT SPECIES						
AR	5	* ACER RUBRUM	N	RED MAPLE	60	W.B.
AS	6	* ACER SACCHARUM	N	SUGAR MAPLE	60	W.B.
GB	4	GINKGO BILOBA		GINKGO	60	W.B.
FS	7	FAGUS SYLVATICA 'DAWYCK PURPLE'		DAWYCK PURPLE BEECH	60	W.B.
GT	4	GLEDITSIA TRIACANTHOS 'SHADEMASTER'		SHADEMASTER LOCUST	60	W.B.
QR	3	* QUERCUS RUBRA	N	RED OAK	60	W.B.
QM	5	* QUERCUS MACROCARPA	N	BUR OAK	60	W.B.
TC	2	TILIA CORDATA		LITTLELEAF LINDEN	60	W.B.
	36					
SMALL DECIDUOUS TREES						
*INDICATES DROUGHT-RESISTANT SPECIES						
AC	7	* AMELANCHIER CANADENSIS	N	SERVICEBERRY	60	W.B.
AP	1	ACER PALMATUM VAR. DISSECTUM		JAPANESE MAPLE	40	B&B
PC	14	PYRUS CALLERYANA 'CAPITAL'		CAPITAL PEAR	60	W.B.
SR	1	SYRINGA RETICULATA		JAPANESE LILAC	60	W.B.
	23					
TREE FORM SHRUBS						
Cd	1	CORNUS KOUSA 'SATOMI'		SATOMI FLOWERING DOGWOOD	40	B&B
Hg	5	HYDRANGEA PANICULATA 'GRANDIFLORA'		PEE GEE HYDRANGEA	40	B&B
	6					
GRASSES						
*INDICATES DROUGHT-RESISTANT SPECIES						
ca	209	* CALAMAGROSTIS ACUTIFOLIA 'KARL FORESTER'		KARL FORESTER REED GRASS	125cm	1 GAL.
cm	93	* CAREX MORROWII 'ICE DANCE'		ICE DANCE SEDGE	30cm	1 GAL.
NEEDS TO BE WATERED REGULARLY UNTIL ESTABLISHED, DROUGHT-RESISTANT ONCE ESTABLISHED						
fg	12	FESTUCA GLAUCA 'BEYOND BLUE'		BEYOND BLUE FESCUE	40cm	1 GAL.
pa	87	* PENNISETUM ALOPECUROIDES 'LITTLE BUNNY'		LITTLE BUNNY FOUNTAIN GRASS	40cm	1 GAL.
	401					
PERENNIALS						
*INDICATES DROUGHT-RESISTANT SPECIES						
ag	19	* AGASTACHE FOENICULUM 'BLUE FORTUNE'		ANISE HYSSOP	60cm	1 GAL.
ah	54	ANEMONE HUPEHENSIS VAR. JAPONICA 'PAMINA'		JAPANESE ANEMONE	60cm	1 GAL.
bm	38	BRUNNERA MACROPHYLLA 'JACK FROST'		SIBERIAN BUGLOSS	40cm	1 GAL.
cc	41	CAMPANULA CARPATICA 'BLUE CLIPS'		CARPATIAN BELLFLOWER	25cm	1 GAL.
cv	35	* COREOPSIS VERTICILLATA 'MOONBEAM'		THREADLEAF TICKSEED	60cm	1 GAL.
gd	35	* RUDBECKIA HIRTA	N	GLORIOSA DAISY	60cm	1 GAL.
ep	35	* ECHINACEA PURPUREA 'GREEN JEWEL'		GREEN JEWEL CONEFLOWER	60cm	1 GAL.
gr	122	* GERANIUM 'ROZANNE'		GERANIUM ROZANNE	40cm	1 GAL.
iv	18	FRAGARIA VIRGINIANA	N	VIRGINIA STRAWBERRY	40cm	1 GAL.
nf	49	* HEUCHERA X 'FOREVER PURPLE'		FOREVER PURPLE CORAL BELLS	25cm	1 GAL.
hp	105	* HEBERCALLIS STELLA D'ORO'		STELLA D'ORO DAYLILY	50cm	1 GAL.
hg	14	* HOSTA 'BIG DADDY'		BIG DADDY HOSTA	65cm	1 GAL.
hm	27	* HOSTA 'AUGUST MOON'		AUGUST MOON HOSTA	45cm	1 GAL.
is	19	IRIS PALLIDA 'ARGENTA VARIEGATA'		BEARED IRIS	60cm	1 GAL.
iv	36	IRIS VERICOLOR	N	BLUE FLAG IRIS	70cm	1 GAL.
sb	8	* STACHYS BYZANTINA 'HELEN VON STEIN'		LAMB'S EAR	25cm	1 GAL.
sm	77	* SPECTABILE 'AUTUMN JOY' HERBSTFREUDE		AUTUMN JOY SEDUM	60cm	1 GAL.
sp	26	* PEROVSKIA ATRIPLEXIFOLIA		RUSSIAN SAGE	90cm	1 GAL.
pv	22	* PHYSTEGIA VIRGINIANA 'VIVID'		OBEDIENT PLANT	60cm	1 GAL.
tc	19	* TROLLIUS CULTORUM 'NEW MOON'		GLOBEFLOWER	40cm	1 GAL.
wf	36	* WEIGELA FLORIDA 'MIDNIGHT WINE'		MIDNIGHT WINE WEIGELA	30cm	1 GAL.
	852					
DECIDUOUS SHRUBS						
*INDICATES DROUGHT-RESISTANT SPECIES						
Cs	29	* CORNUS SERICEA 'ARCTIC FIRE'		RED OSIER DOGWOOD	200cm	1 GAL.
Ea	7	* DWARF BURNING BUSH		EUONYMUS ALATUS 'COMPACTUS'	2m	1 GAL.
Hh	41	HYDRANGEA PANICULATA 'BOBO'		BOBO HYDRANGEA	80cm	1 GAL.
Pg	10	* PHYSCOCARPUS OPULIFOLIUS 'DARTS GOLD'		DARTS GOLD HIBERNIA	125cm	1 GAL.
Rr	36	ROSA 'MERIFTDAY'		OSO EASY DOUBLE PINK ROSE	60cm	1 GAL.
NEEDS TO BE WATERED REGULARLY UNTIL ESTABLISHED, BUT DROUGHT-RESISTANT ONCE ESTABLISHED						
Sj	76	* SPIREA JAPONICA 'RAINBOW FIZZ'		RAINBOW FIZZ SPIRAEA	80cm	1 GAL.
	199					
CONIFEROUS SHRUBS						
*INDICATES DROUGHT-RESISTANT SPECIES						
Cg	2	* CHAMAECYPARIS PISIFERA 'GOLDEN MOPS'		GOLDEN MOP THREADLEAF FALSECYPRESS	80cm	1 GAL.
Jh	5	* JUNIPERUS HORIZONTALIS 'BAR HARBOR'		BAR HARBOR JUNIPER	20cm	1 GAL.
Ji	5	* JUNIPERUS HORIZONTALIS 'LIMEGLOW'		LIMEGLOW CREEPING JUNIPER	80cm	1 GAL.
Js	21	* JUNIPERUS SABINA 'BUFFALO'		BUFFALO JUNIPER	30cm	1 GAL.
Pm	39	* PINUS MUGO VAR. PUMILIO		DWARF MUGO VAR. PUMILIO	125cm	1 GAL.
Th	8	* TAXUS X MEDIA 'HICKSII'		HICKS' YEW	260cm	1 GAL.
Tc	28	* TAXUS CUSPIDATA 'NANA'		DWARF JAPANESE YEW	125cm	1 GAL.
	108					

1 POND
1:50

7	Issued for Third Submission	Dec/14/22
6	Issued for Second Submission	Apr/8/22
5	Issued for Client Review	Mar/24/22
4	Issued for Coordination	Mar/17/22
3	Issued for Client Review	Feb/14/22
2	Issued for First Submission	Oct/25/21
1	Issued for Coordination	Oct/18/21
No.	Description	Date
Revision		
City Approval Stamp		



NAK design strategies
 1285 WELLINGTON STREET, OTTAWA, ON K1Y 3A8 CANADA
 T 613.237.2345 F 613.237.4423 NAKDESIGNSTRATEGIES.COM
 Project

SCHLEGEL VILLAGES OTTAWA

Title	
DETAILS	
Date	Dec/22
Scale	N.T.S.
Drawn	SH
Checked	SC
Job No.	21-193
Sheet	D-02