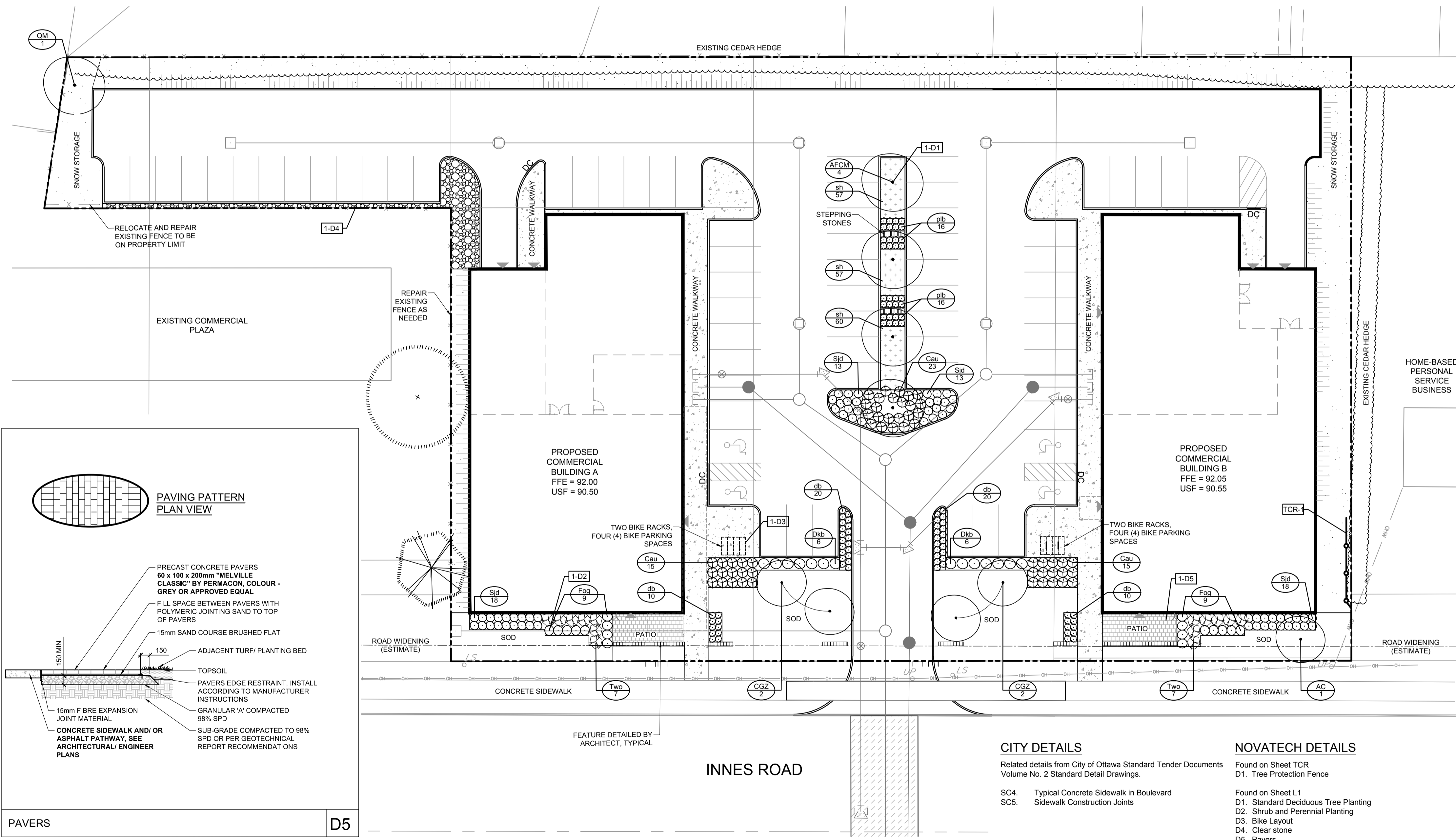


- LEGEND**
- 3-D1 DETAIL SHEET # NOVATECH OR CITY DETAIL NUMBER SEE LIST FOR CODE
 - PROPERTY LIMIT
 - PROPOSED BUILDING
 - TREE PROTECTION FENCE
 - EXISTING FENCE
 - PROPOSED CONCRETE
 - PROPOSED PAVERS
 - CLEAR STONE
 - PERENNIALS AND ORNAMENTAL GRASSES
 - EXISTING TREES TO PROTECT
 - PROPOSED DECIDUOUS TREES
 - PROPOSED PLANTING
 - GREENFIELDS SEED MIX WITH EROSION PROTECTION
 - SPECIES (SEE PLANT LIST)
 - QUANTITY
- GENERAL**
- Read and interpret this drawing/ drawing set in conjunction with all the contract details and specifications, including related civil, utility, structural, architectural, mechanical, electrical, environmental, geotechnical, and survey information.
 - The Contractor is to determine the exact location, size, material, and elevation of all existing utilities prior to commencing construction. Protect and assume responsibility for all existing utilities regardless of being shown on the drawings.
 - It is essential to use the plans and details in conjunction with the specifications and notes.
 - Do not scale drawings. Work to dimensions only.
 - Protect all existing and retained vegetation for the duration of construction according to the contract details and specifications.
 - Reinstate all areas and items damaged or disturbed, beyond the Limit of Work, because of construction activities, including but not limited to construction staging areas, haul roads, stockpile areas, etc. to the satisfaction of the Consultant. Unless otherwise noted, Contractor is to reinstate all areas to pre-construction condition or better to the satisfaction of the Contract Administrator.



- PLANTING**
- Plant material to be No. 1 Grade and is to comply with Canadian Standards for Nursery Stock (latest edition) published by the Canadian Nursery Landscape Association. Use structurally sound plant material with strong fibrous root system free of disease, defects, and injuries. Use trees with straight trunks, well and characteristically branched for species. Obtain approval from consultant of plant material at source prior to digging. All trees and shrubs to be container grown, potted, WB or B.B. as indicated on Plant List. Bare root plants are only acceptable for certain species and as approved by the Landscape Architect.
 - Plant material substitutions are not permitted without the written approval from the Consultant, with 48 hours notice, prior to shipping plant material.
 - Plant locations are schematic / approximate only. Contractor is to stake out locations on site for approval by the Landscape Architect prior to installation.
 - The illustrated number of plants shown in the Planting Plan supersedes the estimated number in the Plant List. Contractor to report any discrepancies to the Landscape Architect prior to installation. Contractor will assume full responsibility if the Landscape Architect is not notified.
 - Ensure trees are thoroughly watered following planting. Monitor material and ensure adequate moisture until acceptance.
 - In heavy clay or poorly drained soils, set root ball with root collar 75-100mm higher than finished grade.
 - Approved topsoil depths are as follows:
 - Plant Beds - 450mm continuous depth. Applies to shrubs, perennials, vines, and groundcovers.
 - Sod/ Seed Areas - 100mm depth.
 - Sod to be No. 1 Kentucky Bluegrass Sod grown from minimum mixture of 3 Kentucky Bluegrass cultivars. Quality and source are to comply with Canadian Standards for Nursery Stock, Section 17, (latest edition) published by the Canadian Nursery Landscape Nursery Landscape Association.
 - Install a 1.2m sod strip adjacent to all hard surfaces. Note, sod is not typically graphically shown on plans.
 - Apply the following mineral fertilizer unless soil tests show other requirements:
 - Plant Beds - (8-32-16), i.e. 8% Nitrogen, 32% Phosphorus, 16% Potash per manufacturer specifications.
 - Sod Areas - (8-32-16), i.e. 8% Nitrogen, 32% Phosphorus, 16% Potash at a rate of 350kg/ha.
 - Where applicable, for any plant areas with a mix of species/ cultivars notes, Contractor is to cluster like plants in groups of 3-5 and evenly distribute these in the noted area.

- SEED MIX AND APPLICATION**
- For areas steeper than 3:1, Contractor to apply erosion control blanket. Erosion control blanket to be machine woven mats made from natural wood, coco or cotton fiber, or combination depending on manufacturer, with stitching between two photo-degradable natural organic fiber nettings. Submit products for approval by Consultant. OPSS 804 applies except as may be amended and extended herein.
- In addition to the specified seed mixes, all applications are to include a nurse crop as noted.
- NURSE CROP**
- Annual Ryegrass @34kg/hectare
- GREENFIELDS SEED MIX BY DLF**
Seeding Rate: 175kg/hectare

PLANT LIST

| KEY | QTY | BOTANICAL NAME | COMMON NAME | SIZE | COND | SPACING |
|--|-----|--|--------------------------------|----------|------|-----------|
| Deciduous Trees | | | | | | |
| AC | 11 | <i>Amelanchier canadensis</i> (Single stem) | Downy Serviceberry | 45mm Cal | WB | As Shown |
| CGZ | 4 | <i>Crataegus crus-galli</i> 'Cruzam' | Crusader Hawthorn | 50mm Cal | WB | As Shown |
| QM | 1 | <i>Quercus macrocarpa</i> | Burr Oak | 50mm Cal | WB | As Shown |
| Deciduous Shrubs | | | | | | |
| Cau | 53 | <i>Cornus sanguinea</i> 'Arctic Sun' | Arctic Sun Dogwood | 60cm Ht | PT | 100cm O.C |
| Cs | 21 | <i>Cornus sericea</i> | Red Osier Dogwood | 60cm Ht | PT | 120cm O.C |
| Dkb | 12 | <i>Diervilla x Kodiak Black</i> 'SMNDRSF' | Kodiak Black Honeysuckle | 60cm Ht | PT | 80cm O.C |
| Fog | 18 | <i>Fothergilla gardenii</i> | Dwarf Fothergilla | 60cm Ht | PT | 100cm O.C |
| Sjd | 62 | <i>Spiraea japonica</i> 'Double Play Candy Corn' | Double Play Candy Corn Spiraea | 50cm Ht | PT | 60cm O.C |
| Coniferous Shrubs | | | | | | |
| Two | 14 | <i>Thuja occidentalis</i> 'Woodwardii' | Woodward's Globe Cedar | 40cm Spr | PT | 120cm O.C |
| Ornamental Grasses and Perennials | | | | | | |
| db | 62 | <i>Deschampsia cespitosa</i> 'Bronzeschleier' | Bronze Veil Tufted Hair Grass | 1g | PT | 50cm O.C |
| eas | 30 | <i>Elymus arenarius</i> | Blue Lyme Grass | 1g | PT | 60cm O.C |
| plb | 32 | <i>Perovskia atriplicifolia</i> 'Lacey Blue' 'Lissitt' | Lacey Blue Sage | 1g | PT | 60cm O.C |
| sh | 174 | <i>Sporobolus heterolepis</i> | Prairie Dropseed | 1g | PT | 60cm O.C |

NOT FOR CONSTRUCTION

OWNER INFORMATION
6587712 CANADA INC.
1085 BOULEVARD DE LA CARRIERE,
GATINEAU, QUEBEC, J8Y 6V4

VALÉRIE LAPENSÉE
PHONE: (819) 664-4306
EMAIL: valerie@matelapensee.ca

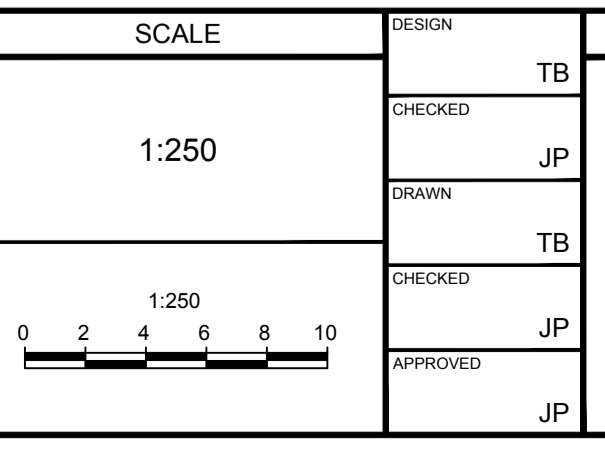
CITY DETAILS
Related details from City of Ottawa Standard Tender Documents Volume No. 2 Standard Detail Drawings.

SC4. Typical Concrete Sidewalk in Boulevard
SC5. Sidewalk Construction Joints

NOVATECH DETAILS
Found on Sheet TCR
D1. Tree Protection Fence

Found on Sheet L1
D1. Standard Deciduous Tree Planting
D2. Shrub and Perennial Planting
D3. Bike Layout
D4. Clear stone
D5. Pavers

| No. | REVISION | DATE | BY |
|-----|-------------------------------|-----------|----|
| 1. | ISSUED FOR SITE PLAN APPROVAL | DEC 22/22 | JP |



FOR REVIEW ONLY

| DESIGN | TB |
|----------|----|
| CHECKED | JP |
| DRAWN | TB |
| CHECKED | JP |
| APPROVED | JP |

NOVATECH
Engineers, Planners & Landscape Architects
Suite 200, 240 Michael Cowpland Drive
Ottawa, Ontario, Canada K2M 1P6

Telephone (613) 254-9643
Facsimile (613) 254-5867
Website www.novatech-eng.com

LOCATION
CITY OF OTTAWA
3493 - 3499 INNES ROAD

DRAWING NAME
LANDSCAPE PLAN

PROJECT No.
118204

REV #1
118204-L1

M:\2018\118204\CADD\landscape\118204_L.dwg, L1 (L.P.), Dec 23, 2022 - 5:04am, tbankale