

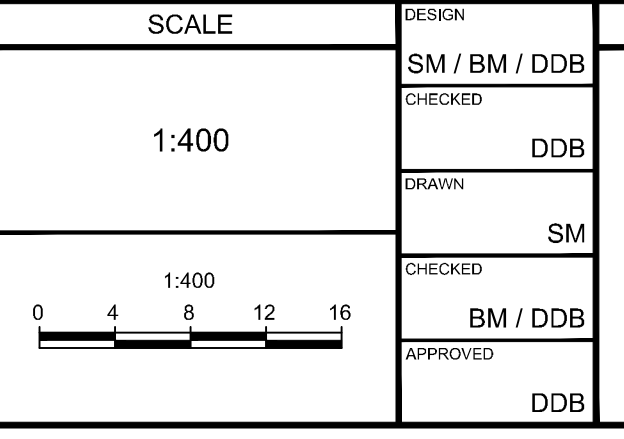


NOTE:
 THE POSITION OF ALL POLE LINES, CONDUITS,
 WATERMANS, SEWERS AND OTHER
 UNDERGROUND AND OVERGROUND UTILITIES AND
 STRUCTURES IS NOT NECESSARILY SHOWN ON
 THE CONTRACT DRAWINGS, AND WHERE SHOWN,
 THE ACCURACY OF THE POSITION OF SUCH
 UTILITIES AND STRUCTURES IS NOT GUARANTEED.
 BEFORE STARTING WORK, DETERMINE THE EXACT
 LOCATION OF ALL SUCH UTILITIES AND
 STRUCTURES AND ASSUME ALL LIABILITY FOR
 DAMAGE TO THEM.

THIS PLAN IS TO BE READ IN CONJUNCTION WITH CIVIL
 PLANS 122151-NLD1&2, 122151-GR1&2 AND 122151-PR1

No.	REVISION	DATE	BY
1	ISSUED FOR CITY OF OTTAWA REVIEW	DEC 16/22	DDB

SCALE	DESIGN
1:400	SM / BM / DDB
	CHECKED
	DDB
	DRAWN
	SM
	CHECKED
	BM / DDB
	APPROVED
	DDB



FOR REVIEW ONLY

DESIGN: SM / BM / DDB
 CHECKED: DDB
 DRAWN: SM
 CHECKED: BM / DDB
 APPROVED: DDB

NOVATECH
 Engineers, Planners & Landscape Architects
 Suite 200, 240 Michael Cowpland Drive
 Ottawa, Ontario, Canada K2M 1P6
 Telephone: (613) 254-8643
 Facsimile: (613) 254-5867
 Website: www.novatech-eng.com

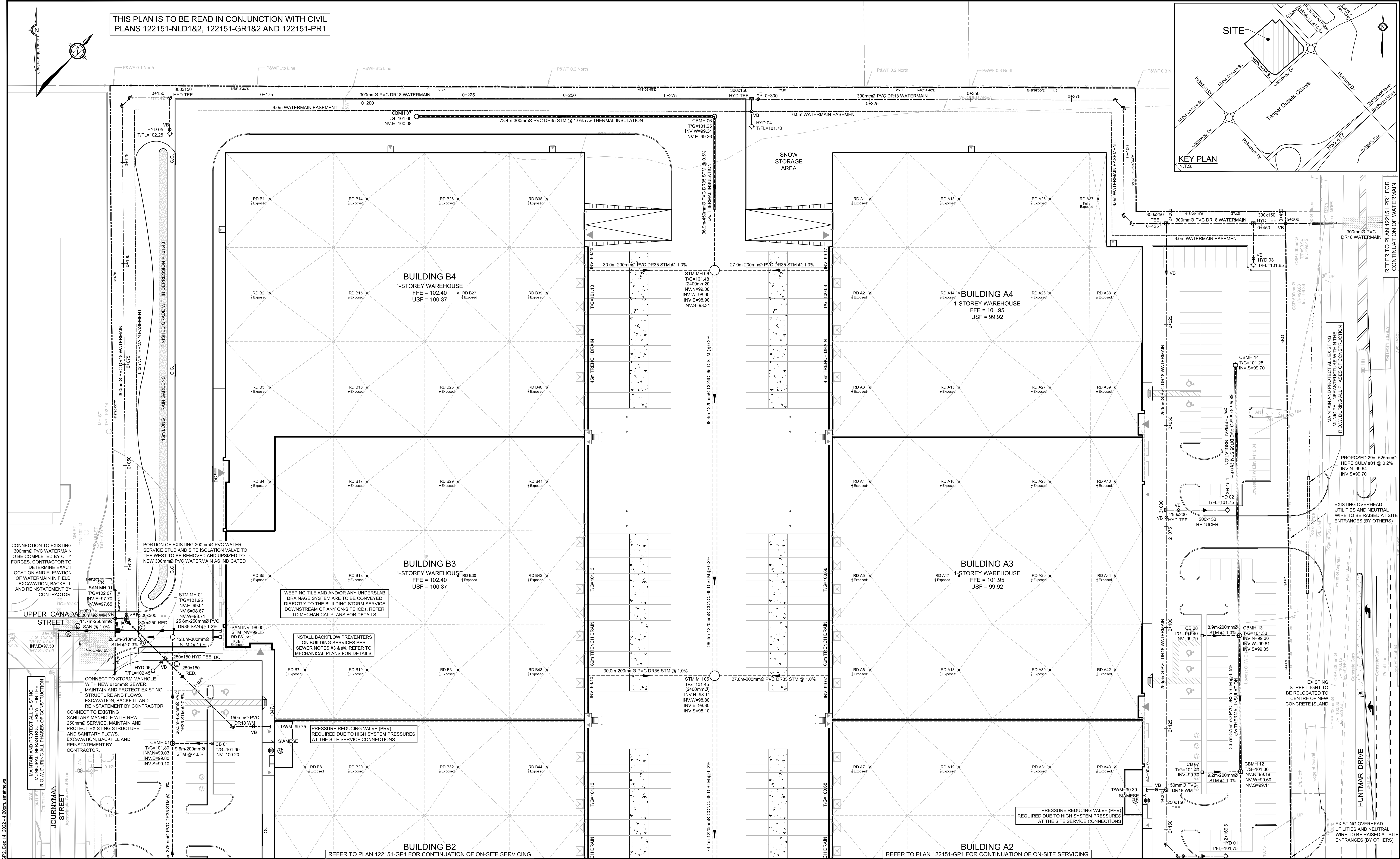
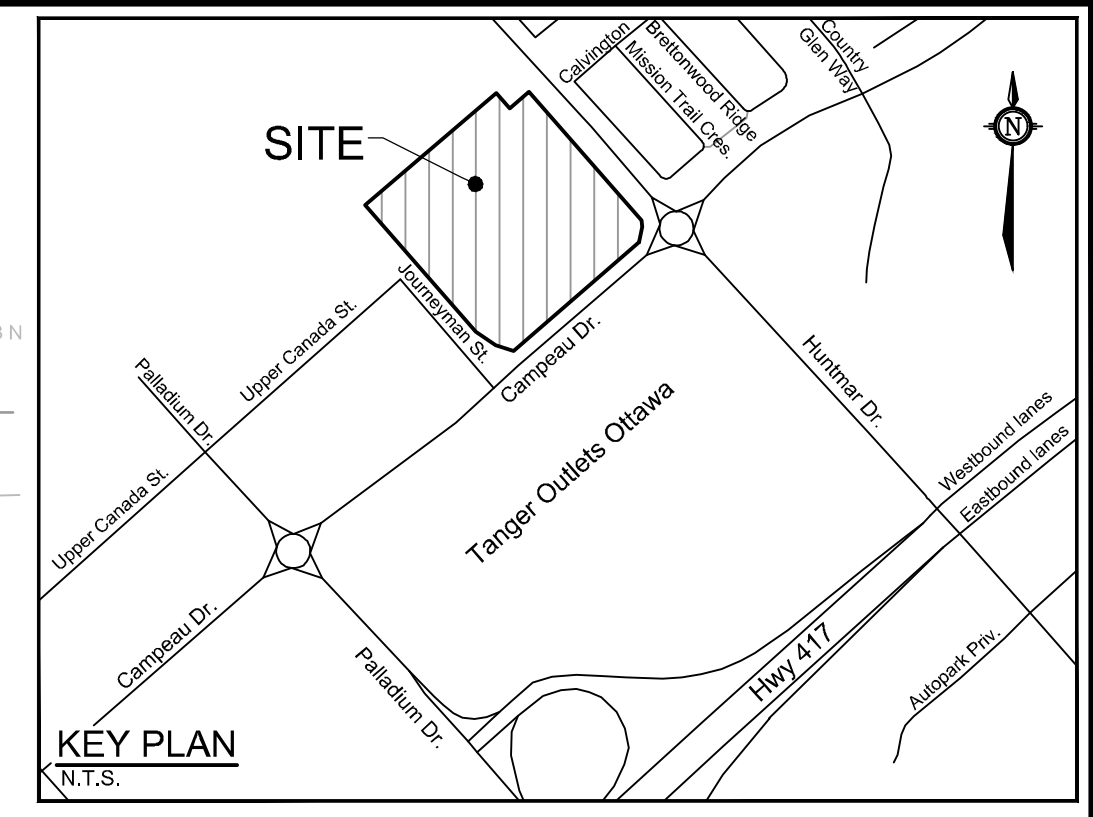
LOCATION
 CITY OF OTTAWA
 405 HUNTMAR DRIVE - WAREHOUSE DEVELOPMENT

DRAWING NAME
GENERAL PLAN OF SERVICES

PROJECT No. 122151
 REV # 1
 DRAWING No. 122151-GP1

M:\2022\122151\CAD\CIVIL\122151-GP-001.dwg Date: 14 Dec 2022 4:22pm smathews

THIS PLAN IS TO BE READ IN CONJUNCTION WITH CIVIL PLANS 122151-NLD1&2, 122151-GR1&2 AND 122151-PR1



UPPER CANADA STREET
 CONNECTION TO EXISTING 300mm Ø PVC WATERMAIN TO BE COMPLETED BY CITY FORCES. CONTRACTOR TO DETERMINE EXACT LOCATION AND ELEVATION OF WATERMAIN IN FIELD. EXCAVATION, BACKFILL AND REINSTATEMENT BY CONTRACTOR.

JOURYAN STREET
 MAINTAIN AND PROTECT ALL EXISTING MUNICIPAL INFRASTRUCTURE WITHIN THE LOCAL BOUNDARIES OF CONSTRUCTION.

PORTION OF EXISTING 200mm Ø PVC WATER SERVICE STUB AND SITE ISOLATION VALVE TO THE WEST TO BE REMOVED AND UPSIZED TO NEW 300mm Ø PVC WATERMAIN AS INDICATED.

WEEPING TILE AND ANY UNDERSLAB DRAINAGE SYSTEM ARE TO BE CONVEYED DIRECTLY TO THE BUILDING STORM SERVICE DOWNSTREAM OF ANY ON-SITE ICDs. REFER TO MECHANICAL PLANS FOR DETAILS.

INSTALL BACKFLOW PREVENTERS ON BUILDING SERVICES PER SEWER NOTES #3 & #4. REFER TO MECHANICAL PLANS FOR DETAILS.

PRESSURE REDUCING VALVE (PRV) REQUIRED DUE TO HIGH SYSTEM PRESSURES AT THE SITE SERVICE CONNECTIONS.

EXISTING OVERHEAD UTILITIES AND NEUTRAL WIRE TO BE RAISED AT SITE ENTRANCES (BY OTHERS).

EXISTING OVERHEAD UTILITIES AND NEUTRAL WIRE TO BE RAISED AT SITE ENTRANCES (BY OTHERS).

STREETLIGHT TO BE RELOCATED TO CENTRE OF NEW CONCRETE ISLAND.

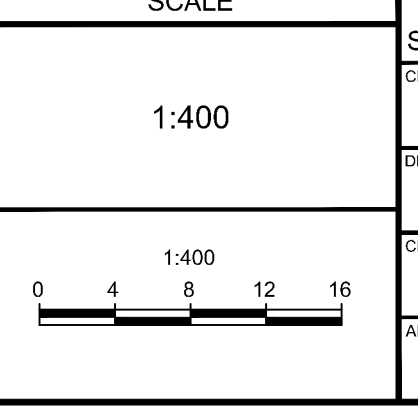
EXISTING OVERHEAD UTILITIES AND NEUTRAL WIRE TO BE RAISED AT SITE ENTRANCES (BY OTHERS).

NOTE:
 THE POSITION OF ALL POLE LINES, CONDUITS, WATERMANS, SEWERS AND OTHER UNDERGROUND AND OVERGROUND UTILITIES AND STRUCTURES IS NOT NECESSARILY SHOWN ON THE CONTRACT DRAWINGS, AND WHERE SHOWN, THE ACCURACY OF THE POSITION OF SUCH UTILITIES AND STRUCTURES IS NOT GUARANTEED. BEFORE STARTING WORK, DETERMINE THE EXACT LOCATION OF ALL SUCH UTILITIES AND STRUCTURES AND ASSUME ALL LIABILITY FOR DAMAGE TO THEM.

REFER TO PLAN 122151-GP1 FOR CONTINUATION OF ON-SITE SERVICING

REFER TO PLAN 122151-GP1 FOR CONTINUATION OF ON-SITE SERVICING

No.	REVISION	DATE	BY
1	ISSUED FOR CITY OF OTTAWA REVIEW	DEC 16/22	DDB



DESIGN	SM / BM / DDB
CHECKED	DDB
DRAWN	SM
CHECKED	BM / DDB
APPROVED	DDB

FOR REVIEW ONLY

NOVATECH
 Engineers, Planners & Landscape Architects
 Suite 200, 240 Michael Cowpland Drive
 Ottawa, Ontario, Canada K2M 1P6
 Telephone: (613) 254-2643
 Facsimile: (613) 254-5867
 Website: www.novatech-eng.com

LOCATION
 CITY OF OTTAWA
 405 HUNTMAR DRIVE - WAREHOUSE DEVELOPMENT

DRAWING NAME
GENERAL PLAN OF SERVICES

PROJECT No. 122151
 REV #1
 DRAWING No. 122151-GP2

M:\2021\122151\CAD\CIVIL\122151-GP-2.dwg, 05/12/22, 4:23pm, smathews

PLAN/GEN/010 - 312 4/20/2022