



No.	Title	Revision	Date
	DESIGN, DESIGN BRIEF AND SITE PHOTOGRAPHS	1	2022-12-16
A002	CONTEXT PLAN	1	2022-12-16
A100	SITE PLAN	1	2022-12-16
A101	ENLARGED SITE PLAN 1/4	1	2022-12-16
A102	ENLARGED SITE PLAN 2/4	1	2022-12-16
A103	ENLARGED SITE PLAN 3/4	1	2022-12-16
A104	ENLARGED SITE PLAN 4/4	1	2022-12-16
A110	SITE DETAILS	1	2022-12-16
P400	BUILDING A-COLORED ELEVATIONS	1	2022-12-16
P401	BUILDING B-COLORED ELEVATIONS	1	2022-12-16

ISSUED FOR SPA



ROSEFELLOW.

SITE PLAN APPLICATION



ROSEFELLOW KANATA

405 HUNTMAR DRIVE, CITY OF OTTAWA (ON)

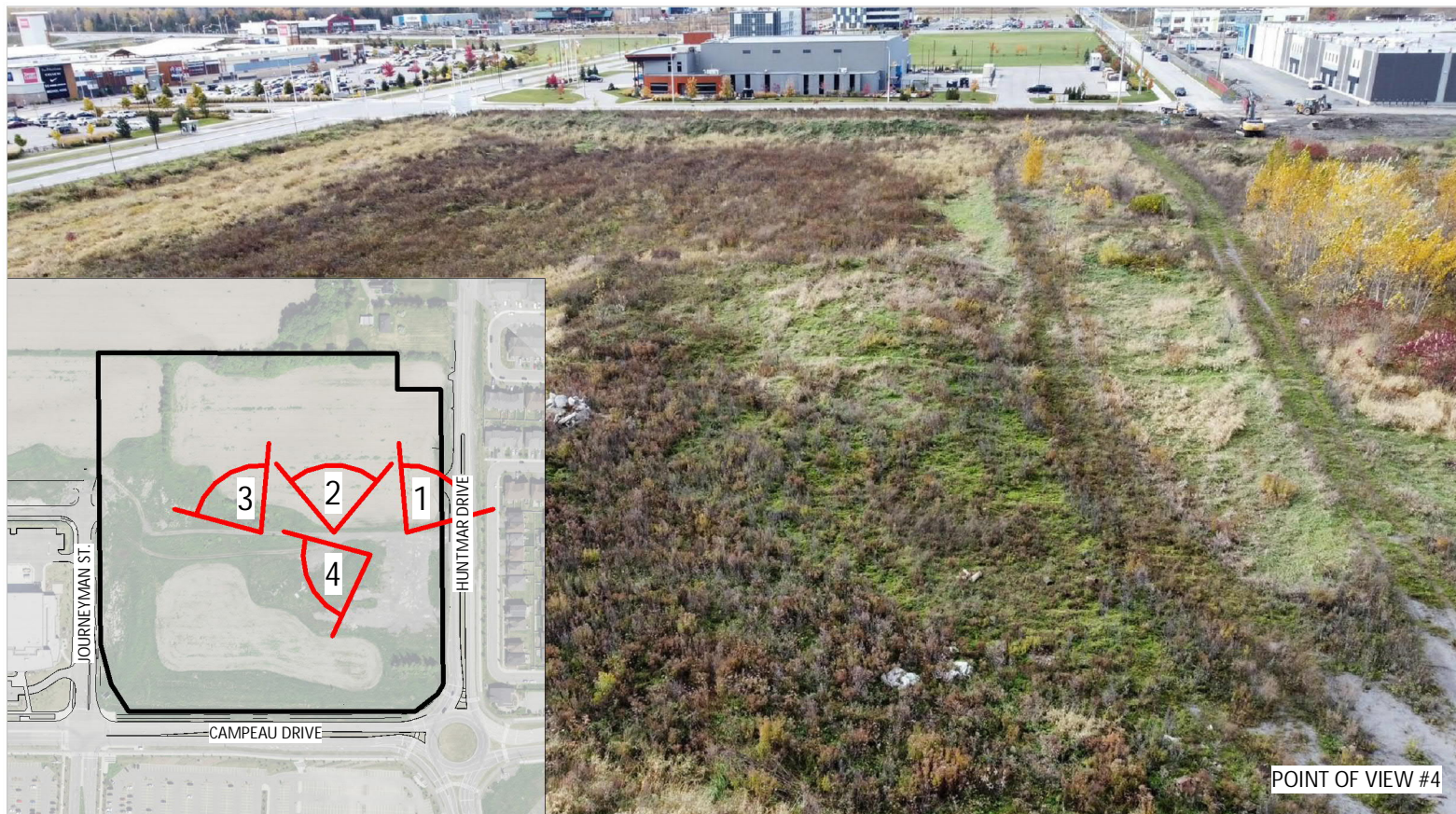
ROSEFELLOW. GKC
ARCHITECTURE & DESIGN



POINT OF VIEW #3



POINT OF VIEW #2



POINT OF VIEW #4



POINT OF VIEW #1



ROSEFELLOW.

ROSEFELLOW KANATA

405 HUNTMAR DRIVE, CITY OF OTTAWA (ON)

SURROUNDING CONTEXTS (2/3)

ISSUED FOR SPA R1 2022-12-16
FOLIO 22081

GKC
ARCHITECTURE & DESIGN



POINT OF VIEW #3



POINT OF VIEW #2



POINT OF VIEW #4



POINT OF VIEW #1

ROSEFELLOW.

ROSEFELLOW KANATA

405 HUNTMAR DRIVE, CITY OF OTTAWA (ON)

SURROUNDING CONTEXTS (3/3)

ISSUED FOR SPA R1 2022-12-16
FOLIO 22081

GKC
ARCHITECTURE & DESIGN

DESIGN BRIEF

The architectural project consists of two industrial buildings that will offer vast multifunctional spaces to the tenants.

The project site is in the southwestern portion of the City of Kanata, Ontario. It is bordered to the south by Campeau Drive, to the east by Huntmar Drive and to the west by Journeyman Street. To the north, fields border the site.

The two buildings stretch in a north-south direction. They are parallel and the truck yard is drawn between them, and the screens mask the truck activity from Campeau Drive. The longest facades face Journeyman Street and Huntmar Drive.

On the other side of Journeyman, there are more industrial buildings, and on the Huntmar side, there is a large residential area. Huntmar Drive is wide. It is a two-lane road separated by a median. There is also a median-separated bike lane on the southeast side of this road.

With the parking area in front of the project, there is over 90 meters between the industrial building frontage identified as A and the residential street frontages.

The project's facades facing the public domain offer an articulate, dynamic, and graphic architectural façade.

The longest façades of the project (on Journeyman and Huntmar) are marked by the tenant entrances, a true arch whose recessed entrance keeps users safe and protected from the elements. Pink accentuates these entrances, and a gradient of vertical lines of the same color brings a dynamic graphic aspect to the overall treatment.

On the first floor, the glazing is more present near the entrances to provide a transparent view into the occupied spaces.

In conclusion, it can be said that the perception of the proposed buildings from the access roads (on Journeyman and Huntmar) and Campeau Drive is particularly well done. In this developing area, these buildings propose a quality architecture that is integrated into the urban fabric.



PROPERTY LINES
IN RED

HUNTMAR DRIVE

CAMPEAU DRIVE

ROSEFELLOW.

ROSEFELLOW KANATA

405 HUNTMAR DRIVE, CITY OF OTTAWA (ON)

AERIAL EXISTING VIEW

ISSUED FOR SPA R1 2022-12-16
FOLIO 22081

GKC
ARCHITECTURE & DESIGN



ROSEFELLOW.

ROSEFELLOW KANATA

405 HUNTMAR DRIVE, CITY OF OTTAWA (ON)

AERIAL PROJECT VIEW

ISSUED FOR SPA R1 2022-12-16
FOLIO 22081

GKC
ARCHITECTURE & DESIGN



ROSEFELLOW.

ROSEFELLOW KANATA

405 HUNTMAR DRIVE, CITY OF OTTAWA (ON)

EXISTING VIEW - CAMPEAU DRIVE

ISSUED FOR SPA R1 2022-12-16
FOLIO 22081

GKC
ARCHITECTURE & DESIGN



ROSEFELLOW.

ROSEFELLOW KANATA

405 HUNTMAR DRIVE, CITY OF OTTAWA (ON)

BUILDING INSERTION - CAMPEAU DRIVE

ISSUED FOR SPA R1 2022-12-16
FOLIO 22081

GKC
ARCHITECTURE & DESIGN



ROSEFELLOW.

ROSEFELLOW KANATA

405 HUNTMAR DRIVE, CITY OF OTTAWA (ON)

EXISTING VIEW - CAMPEAU DRIVE

ISSUED FOR SPA R1 2022-12-16
FOLIO 22081

GKC
ARCHITECTURE & DESIGN



ROSEFELLOW.

ROSEFELLOW KANATA

405 HUNTMAR DRIVE, CITY OF OTTAWA (ON)

BUILDING INSERTION - CAMPEAU DRIVE

ISSUED FOR SPA R1 2022-12-16
FOLIO 22081

GKC
ARCHITECTURE & DESIGN



ROSEFELLOW.

ROSEFELLOW KANATA

405 HUNTMAR DRIVE, CITY OF OTTAWA (ON)

EXISTING VIEW - HUNTMAR DRIVE

ISSUED FOR SPA R1 2022-12-16
FOLIO 22081

GKC
ARCHITECTURE & DESIGN



ROSEFELLOW.

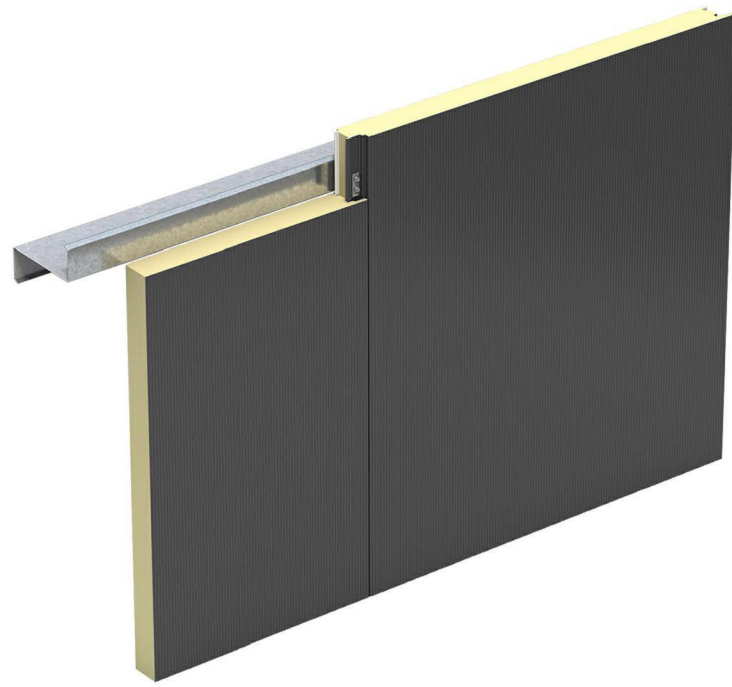
ROSEFELLOW KANATA

405 HUNTMAR DRIVE, CITY OF OTTAWA (ON)

BUILDING INSERTION - HUNTMAR DRIVE

ISSUED FOR SPA R1 2022-12-16
FOLIO 22081

GKC
ARCHITECTURE & DESIGN



VERTICAL INSULATED METAL PANEL (IMP V.), 42" WIDE, 3" THICK, MICRO-RIB FINISH, COLOR: ZINC GRAY (REF. KINGSPAN)



ALUMINIUM VERTICAL MOLDING: MULLION CAP 2 1/2" WIDE AND 6" DEEP, COLOR PINK (PANTONE #1915 C)

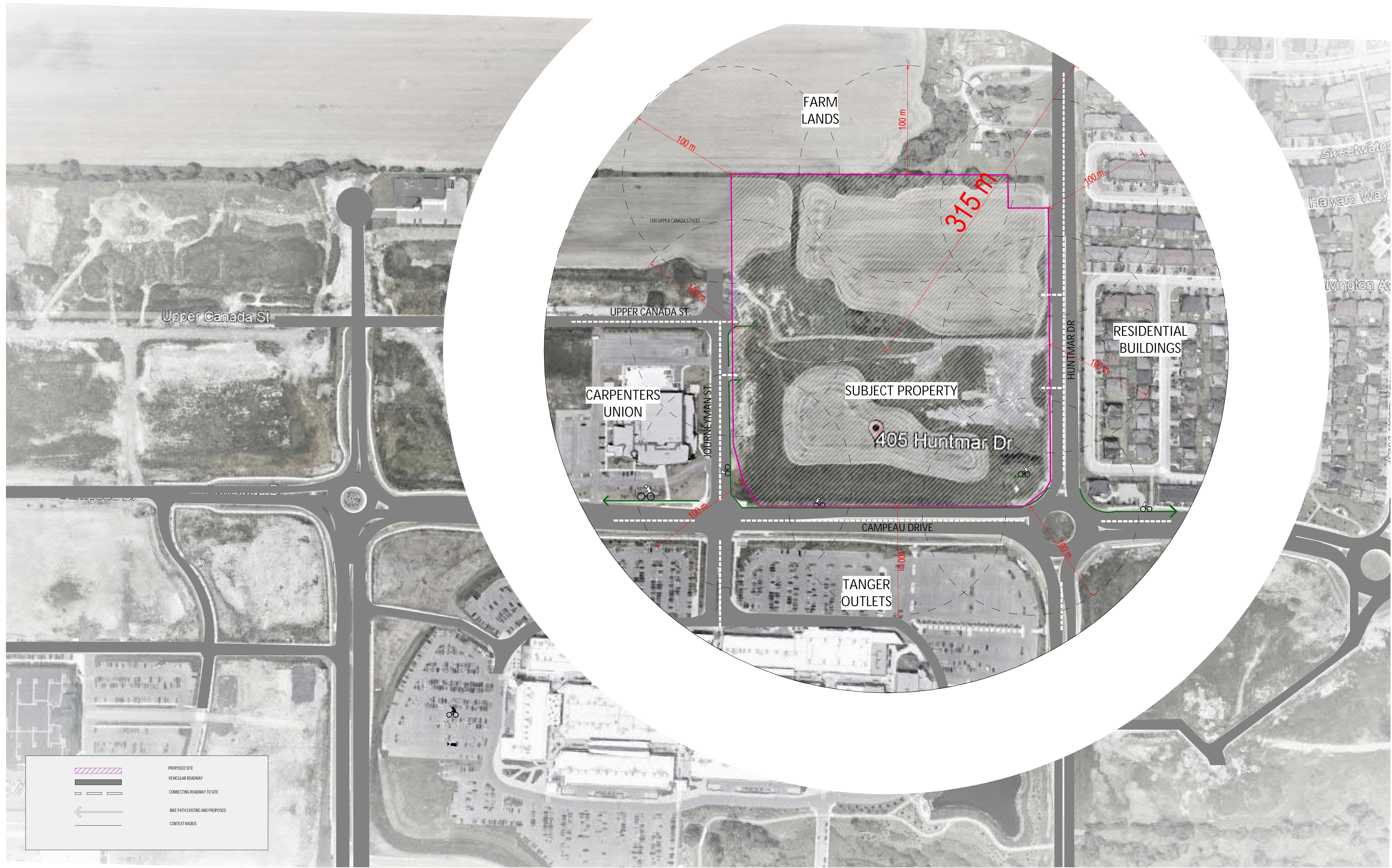


VERTICAL INSULATED METAL PANEL (IMP V.), 42" WIDE, 3" THICK, MICRO-RIB FINISH, COLOR: DOVE GRAY (REF. KINGSPAN)



BIRD FRIENDLY CURTAIN WALL GLASS

A	C
B	D



No.	Date	Revision	By
1	2022-12-16	ISSUED FOR SPA	

ROSEFELLOW KANATA
405 HUNTMAR DR.
CITY OF OTTAWA ONTARIO



Copyright GKC Architects - Not to be used for any other project without the architect's written consent. All dimensions and conditions must be verified on site. Do not scale drawings. Any discrepancies or omissions in the drawing shall be reported to the architect immediately in writing. All work to conform to most recent applicable norms, bylaws and codes for all given trades.

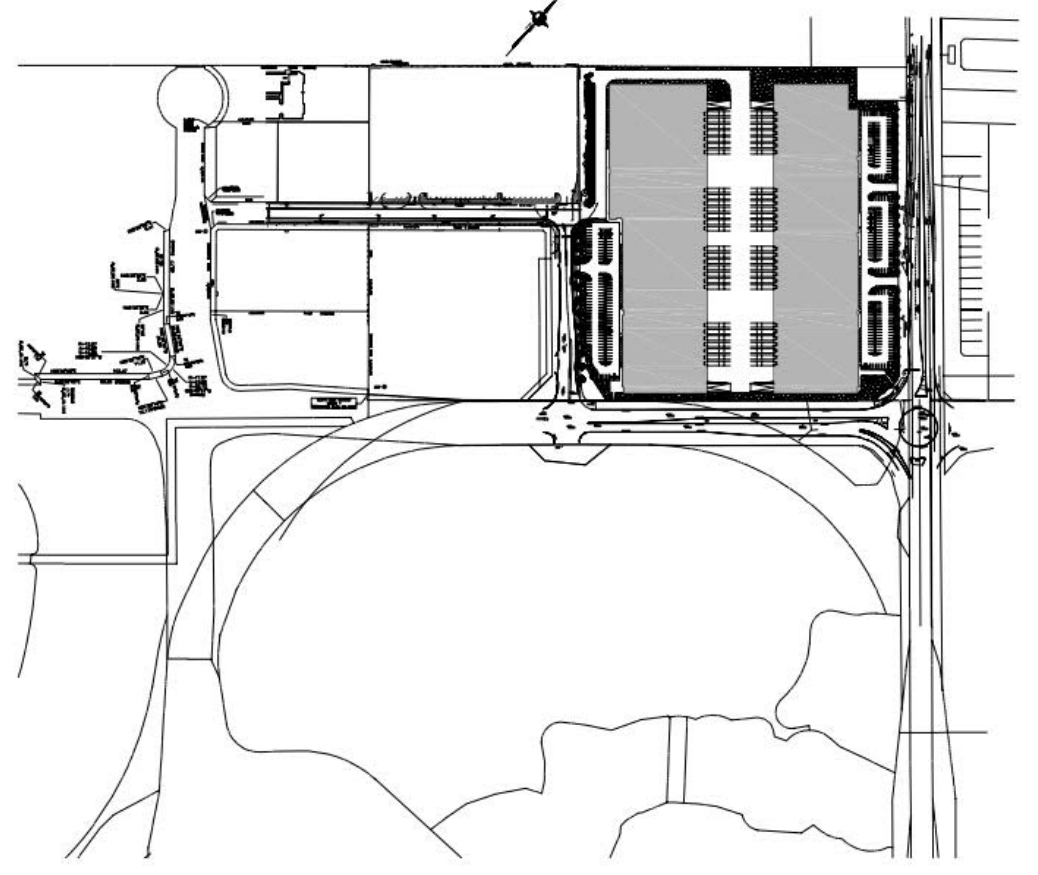
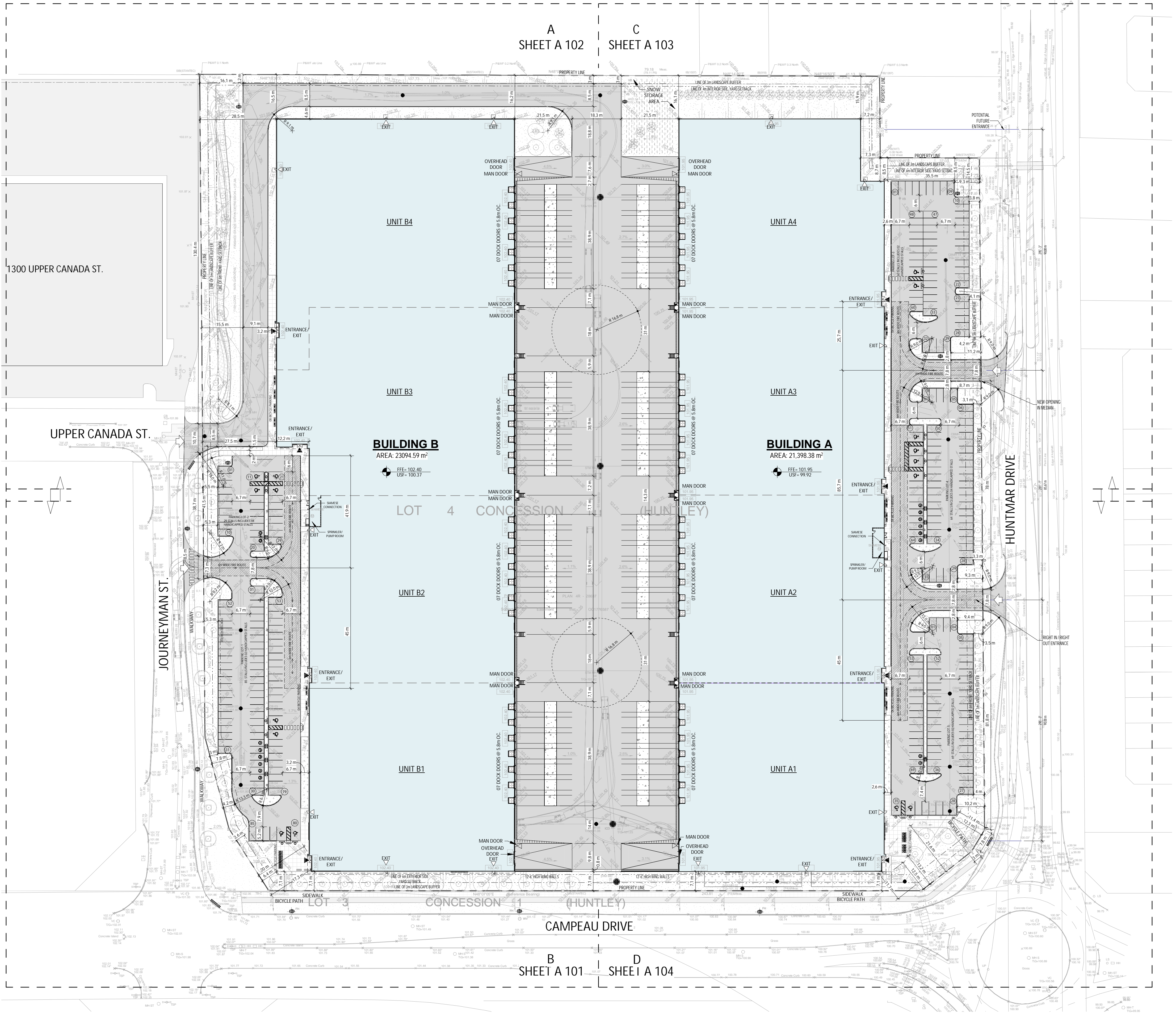
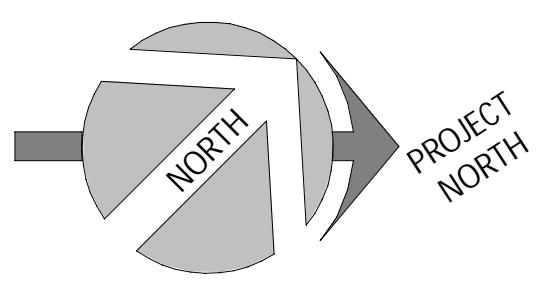
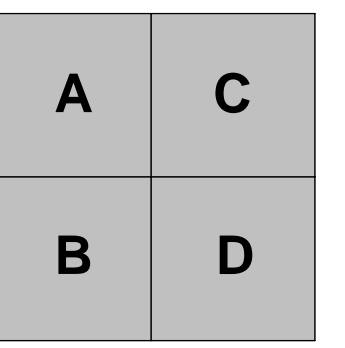
ARCHITECTURE

CONTEXT PLAN

DRAWN BY: AH CHECKED BY: EB

SCALE: 1 : 2000

FOLD: 22081 A002 R1



PROJECT STATISTICS

PROPERTY

PART OF LOT 4
CONCESSION 1
GEOGRAPHIC TOWNSHIP OF HUNTLEY
CITY OF OTTAWA, ON.

ADDRESS: 405 HUNTMAR DR
LOT AREA: #21.4 ac #932,756 ft² #86,687.4 m²

ZONING (P13) LIGHT INDUSTRIAL	ALLOWED/ REQUIRED	PROPOSED
- FRONT YARD	6m	27m
- SIDE YARD	4m	7.1m
- INTERIOR SIDE YARD	4m	7.2m
- REAR YARD	6m	15.9m

- MAX. FSI	7	0.5
- MAX. G.L.A.	173,374.8 m ²	#44,493 m ²
- COVERAGE	55%	51%
- BUILDING HEIGHT	22m	11.2m
- LANDSCAPE REQUIREMENT	15%	15%

CITY PARKING REQUIREMENTS	REQUIREMENTS	PROPOSED
- LIGHT INDUSTRIAL	0.8 /100 m ² FOR THE FIRST 5,000 m ² AND 0.4/100 m ² ABOVE 5,000 m ²	106 STALLS
- HC RESERVED	100-199 CARS MIN. 2 HC RESERVED	193 STALLS
- LANDSCAPED BUFFER TO STREET	6.7m (2 WAY)	21 STALLS
- STANDARD STALL DIMENSIONS	MIN. 3m	
- HC STALL DIMENSIONS	MIN. 2.6m X 5.2m	
- BICYCLE PARKING	MAX. 3.6m X 5.2m	
	1/1,000m ²	

PROPOSED BUILDING AREAS	AREA	AREA
- BUILDING A	#230,247 ft ²	#21,398 m ²
- BUILDING B	#246,498 ft ²	#23,095 m ²
- TOTAL GROSS FLOOR AREA (G.F.A.)	#476,744 ft ²	#44,493 m ²
- TOTAL COVERAGE		51.3%
- TOTAL LANDSCAPING	#138,512 ft ²	15%

PROPOSED PARKING	REQUIREMENTS	PROVIDED
- BUILDING A	- PARKING REQUIRED BY THE CITY	106 STALLS
	- PARKING PROVIDED	193 STALLS
	- BICYCLE PARKING REQUIRED	21 STALLS
- BUILDING B	- PARKING REQUIRED BY THE CITY	114 STALLS
	- PARKING PROVIDED	114 STALLS
	- BICYCLE PARKING REQUIRED	23 STALLS

BUILDING A AREA SUMMARY	AREA	AREA
- TENANT BUILDING A1		
- WAREHOUSE	#55,410 ft ²	#5,150 m ²
- OFFICE (5%)	#2,916 ft ²	#271 m ²
- A1 TENANT AREA	#58,326 ft ²	#5,421 m ²
- TENANT BUILDING A2		
- WAREHOUSE	#55,074 ft ²	#5,118 m ²
- OFFICE (5%)	#2,899 ft ²	#269 m ²
- A2 TENANT AREA	#57,972 ft ²	#5,388 m ²
- TENANT BUILDING A3		
- WAREHOUSE	#54,980 ft ²	#5,110 m ²
- OFFICE (5%)	#2,894 ft ²	#269 m ²
- A3 TENANT AREA	#57,874 ft ²	#5,379 m ²
- TENANT BUILDING A4		
- WAREHOUSE	#53,271 ft ²	#4,951 m ²
- OFFICE (5%)	#2,804 ft ²	#261 m ²
- A4 TENANT AREA	#56,074 ft ²	#5,211 m ²
- TOTAL AREA BUILDING A	#230,247 ft ²	#21,398 m ²

BUILDING B AREA SUMMARY	AREA	AREA
- TENANT BUILDING B1		
- WAREHOUSE	#55,352 ft ²	#5,142 m ²
- OFFICE (5%)	#2,915 ft ²	#271 m ²
- B1 TENANT AREA	#58,265 ft ²	#5,415 m ²
- TENANT BUILDING B2		
- WAREHOUSE	#55,028 ft ²	#5,112 m ²
- OFFICE (5%)	#2,896 ft ²	#269 m ²
- B2 TENANT AREA	#57,924 ft ²	#5,383 m ²
- TENANT BUILDING B3		
- WAREHOUSE	#58,670 ft ²	#5,469 m ²
- OFFICE (5%)	#3,098 ft ²	#288 m ²
- B3 TENANT AREA	#61,768 ft ²	#5,757 m ²
- TENANT BUILDING B4		
- WAREHOUSE	#66,623 ft ²	#6,208 m ²
- OFFICE (5%)	#3,517 ft ²	#327 m ²
- B4 TENANT AREA	#70,140 ft ²	#6,535 m ²
- TOTAL AREA BUILDING B	#246,498 ft ²	#23,095 m ²

LEGEND (OVERALL PLAN)

---	PROPERTY LINE
---	SETBACK LINE (YARD & BUFFER)
---	FIRE ROUTE
■	PROPOSED NEW BUILDING
■	PROPOSED LANDSCAPE AREA
↔	SITE ENTRANCE/ EXIT
◀	BUILDING ENTRANCE/ EXIT
◀	EXIT DOOR

SITE PLAN 1
1:750 A100

SURVEY:
ALL THE INFORMATION RELATED TO THE SITE ARE ON THE PLAN PREPARED BY: "COMPANY NAME HERE"

LOCATION:
THIS BUILDING IS PARALLEL TO THE SOUTHERN PROPERTY LINE. COORDINATE DIMENSIONS ARE FROM PROPERTY LINE TO STRUCTURAL GRIDLINE.

PUBLIC UTILITY SERVICES:
ALL POINTS OF CONNECTION SHOWN ARE CONCEPTUAL AND MAY BE MODIFIED ACCORDING TO THE NEEDS AND REQUIREMENTS OF THE PUBLIC AUTHORITIES CONCERNED. SEWERS, AQUEDUCT, DISTRIBUTION OF NATURAL GAS AND ELECTRICITY, TELEPHONE SERVICE AND CABLE DISTRIBUTIONS, SITE CONDITIONS, NEEDS AND SUBCONTRACTORS COORDINATION. ANY MODIFICATION ARE THE SOLE RESPONSIBILITY OF THE CONTRACTOR AND SHALL BE SUBMITTED TO THE ARCHITECT FOR EXAMINATION AND COORDINATION BEFORE EXECUTION.

DIMENSIONS:
ALL BUILDING DIMENSIONS ARE TAKEN FROM THE EXTERIOR FACE OF THE WALLS AT 1'-0" ABOVE THE GROUND FLOOR.

FIRE PROTECTION:
ALL FLOOR AREAS OF THIS BUILDING WILL BE PROTECTED BY AN AUTOMATIC SPRINKLER SYSTEM IN ACCORDANCE WITH THE REQUIREMENTS OF THE NATIONAL BUILDING CODE AND INSURER REQUIREMENTS.

CIVIL:
CONSULT CIVIL ENGINEER'S DRAWINGS FOR: SITE LEVELS, DRAINAGE SLOPES, RETENTION BASINS, MANHOLES, CATCH BASINS, AND ALL UNDERGROUND SERVICES.

SOIL REPORT:
SOIL TESTING, CORE SAMPLING AND CARRYING CAPACITY. CONSULT THE SOIL REPORT PREPARED BY: REPORT NO. XX DATE: XX

No.	Date	ISSUED FOR SPA	Revision	By
1	2022-12-16	ISSUED FOR SPA		

ROSEFELLOW KANATA
405 HUNTMAR DR.
CITY OF OTTAWA ONTARIO



Copyright GKC Architects - Not to be used for any other project without the architect's written consent. All dimensions and conditions must be verified on site. Do not scale drawings. Any discrepancies or omissions in the drawing shall be reported to the architect immediately in writing. All work to conform to most recent applicable norms, bylaws and codes for all given trades.

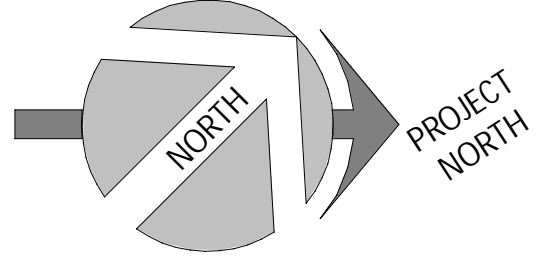
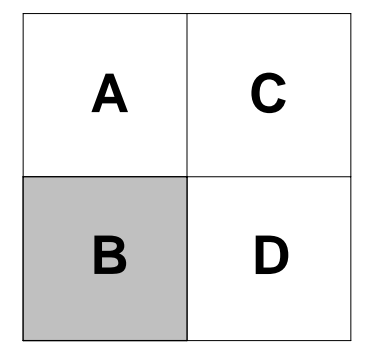
ARCHITECTURE

SITE PLAN

DRAWN BY: AH CHECKED BY: EB

SCALE: As indicated

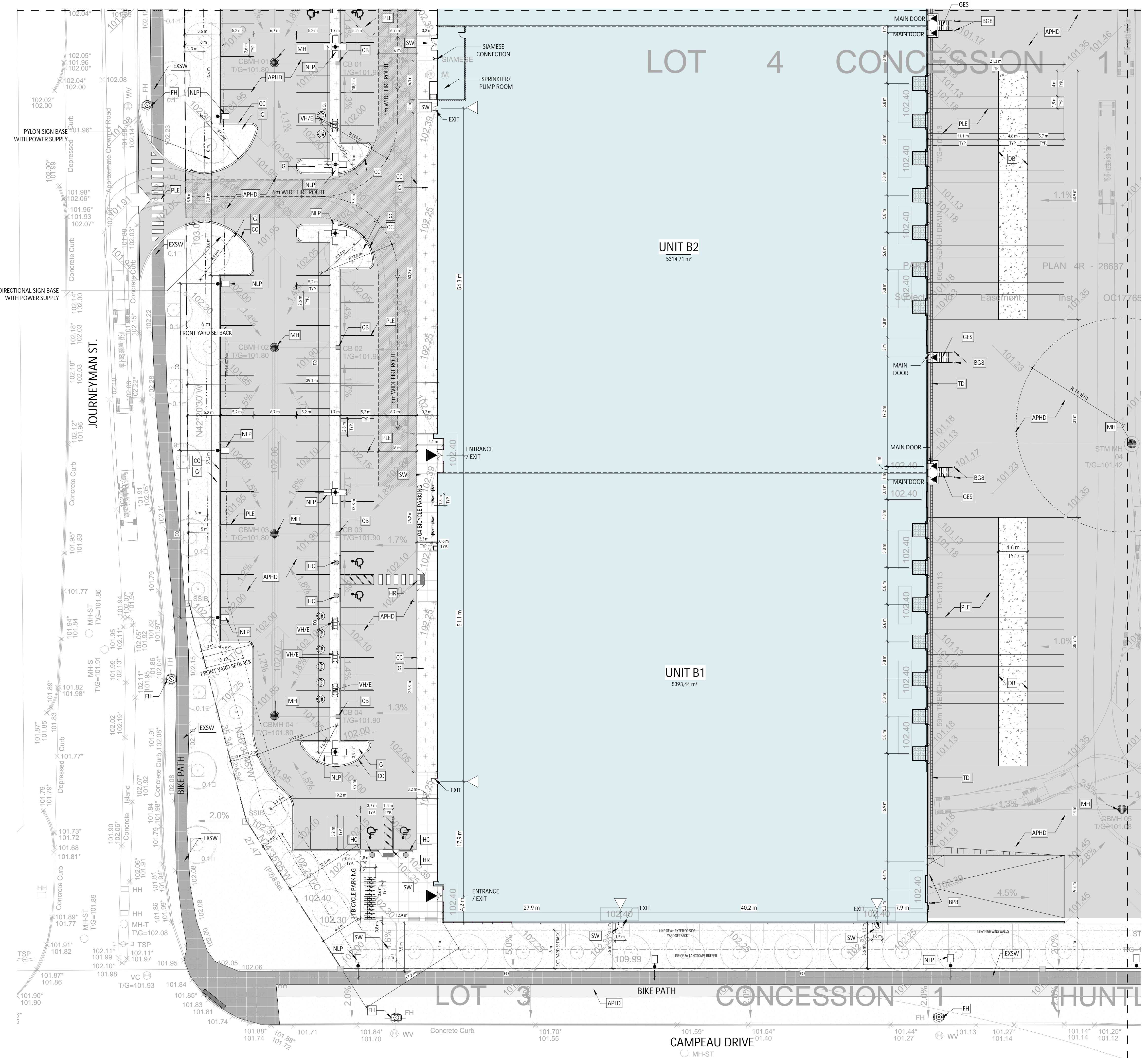
FOUO: 22081 A100 R1



SYMBOLS LEGEND - SITE DETAIL

- NEW BUILDINGS
- APHD ASPHALT PAVING, HEAVY DUTY. SEE CIVIL
- APLD ASPHALT PAVING, LIGHT DUTY. SEE CIVIL
- CC EXTERIOR CONCRETE CURB. SEE CIVIL
- G GRASS OR OTHER LANDSCAPING. SEE LANDSCAPE
- ECB EXTERIOR CONCRETE BASE. SEE STRUCTURE FOR DETAILS
- NEW LIGHT POLE REFER TO ELECTRICAL
- EXSW EXISTING SIDEWALK
- SW CONCRETE SIDEWALK. SEE CIVIL
- HC HANDICAP PARKING SIGN
- PLE YELLOW PAINTED LINE - EXTERIOR
- GALVANIZED BOLLARD, 6"Ø x 5'-0" HT. OR 8"Ø x 5'-0" HT., FULL WITH CONCRETE, CLOSED END WITH GALVANIZED CAP. INSTALLED IN A CONCRETE SONOTUBE OF 20"Ø @ 5'-0" DEPTH. MIN.
- YELLOW PAINTED BOLLARD, 6"Ø x 4'-0" HT. OR 8"Ø x 4'-0" HT., 1'-0" DEPTH, FULL WITH CONCRETE, CLOSED END WITH CAP.
- GES GALVANIZED EXIT STAIR
- HANDICAP RAMP. SEE SPECIFICATIONS / CIVIL ENGINEERING PLAN. RAMP SLOPE: 1:10-1:12
- CHARGER FOR ELECTRIC/HYBRID VEHICLES (DOUBLE). PROVIDE 100mm HIGH CONCRETE BASE. WHEN NOT POSITIONED ON A SIDEWALK. COORDINATE THE SIZE OF THE BASE WITH CHOSEN CHARGER MODEL. SEE SPEC. AND ELECTRICAL
- FH FIRE HYDRANT
- SIAMESE FIRE DEPT CONNECTION. SEE CIVIL AND FIRE PROTECTION
- MH MANHOLE. SEE CIVIL
- CB CATCH BASIN. SEE CIVIL
- TD TRENCH DRAIN. SEE CIVIL
- DB CONCRETE SLAB (DOLLY PAD)

No	Date	ISSUED FOR SPA	Revision	By
1	2022-12-16	ISSUED FOR SPA		



ENLARGED SITE PLAN 1/4
1
1:300
A101

ROSEFELLOW KANATA
405 HUNTMAR DR.
CITY OF OTTAWA ONTARIO



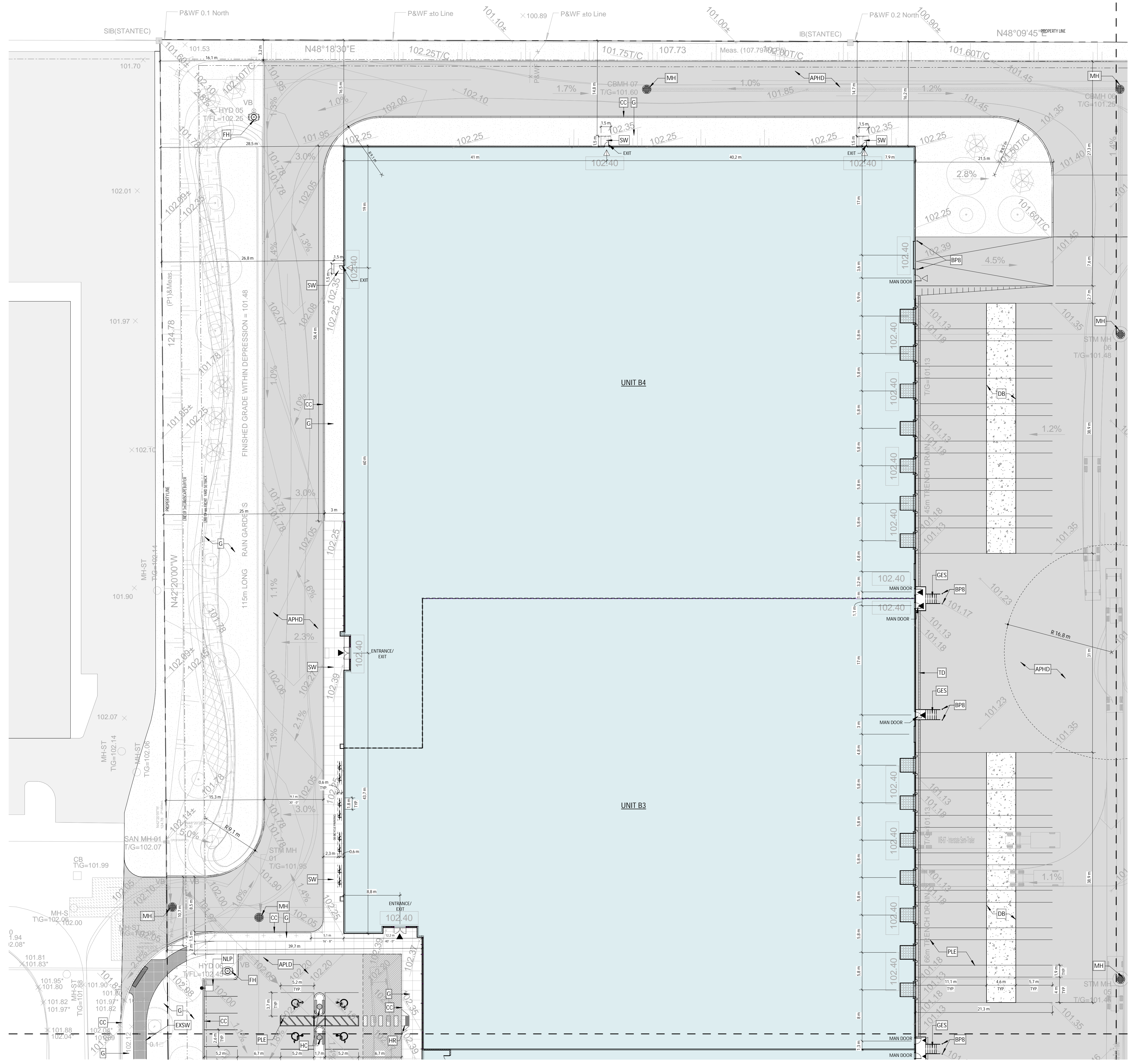
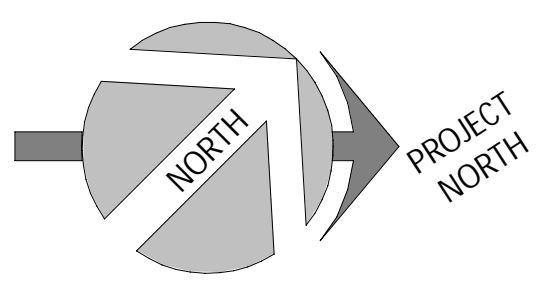
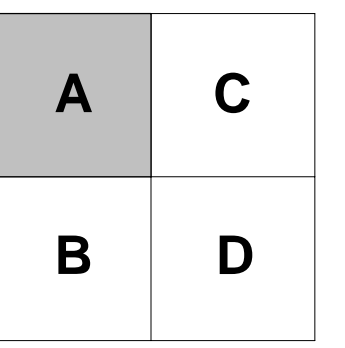
Copyright GKC Architects - Not to be used for any other project without the architect's written consent. All dimensions and conditions must be verified on site. Do not scale drawings. Any discrepancies or omissions in the drawing shall be reported to the architect immediately in writing. All work to conform to most recent applicable norms, bylaws and codes for all given trades.

ARCHITECTURE
ENLARGED SITE PLAN 1/4

DRAWN BY: AH/AT CHECKED BY: AH/EB

SCALE: As indicated

FOUO: 22081 A101 R1



SYMBOLS LEGEND - SITE DETAIL

- NEW BUILDINGS
- APHD ASPHALT PAVING, HEAVY DUTY. SEE CIVIL
- APLD ASPHALT PAVING, LIGHT DUTY. SEE CIVIL
- CC EXTERIOR CONCRETE CURB. SEE CIVIL
- G GRASS OR OTHER LANDSCAPING. SEE LANDSCAPE
- ECB EXTERIOR CONCRETE BASE. SEE STRUCTURE FOR DETAILS
- NLP NEW LIGHT POLE REFER TO ELECTRICAL
- EXSW EXISTING SIDEWALK
- SW CONCRETE SIDEWALK. SEE CIVIL
- HC HANDICAP PARKING SIGN
- PLE YELLOW PAINTED LINE - EXTERIOR
- BG6/BG8 GALVANIZED BOLLARD, 6'0" x 5'-0" HT. OR 8'0" x 5'-0" HT., FULL WITH CONCRETE, CLOSED END WITH GALVANIZED CAP. INSTALLED IN A CONCRETE SONOTUBE OF 20" @ 5'-0" DEPTH. MIN.
- BP6/BP8 YELLOW PAINTED BOLLARD, 6'0" x 4'-0" HT. OR 8'0" x 4'-0" HT., 1'-0" DEPTH, FULL WITH CONCRETE, CLOSED END WITH CAP.
- GES GALVANIZED EXIT STAIR
- HR HANDICAP RAMP. SEE SPECIFICATIONS / CIVIL ENGINEERING PLAN. RAMP SLOPE: 1:10-1:12
- VHE CHARGER FOR ELECTRIC/HYBRID VEHICLES (DOUBLE). PROVIDE 100mm HIGH CONCRETE BASE, WHEN NOT POSITIONED ON A SIDEWALK. COORDINATE THE SIZE OF THE BASE WITH CHOSEN CHARGER MODEL. SEE SPEC. AND ELECTRICAL
- FH FIRE HYDRANT
- SC SIAMESE FIRE DEPT CONNECTION. SEE CIVIL AND FIRE PROTECTION
- MH MANHOLE. SEE CIVIL
- CB CATCH BASIN. SEE CIVIL
- TD TRENCH DRAIN. SEE CIVIL
- DB CONCRETE SLAB (DOLLY PAD)

No	Date	ISSUED FOR SPA	Revision	By
1	2022-12-16	ISSUED FOR SPA		

ROSEFELLOW KANATA
405 HUNTMAR DR.
CITY OF OTTAWA ONTARIO



Copyright GKC Architects - Not to be used for any other project without the architect's written consent. All dimensions and conditions must be verified on site. Do not scale drawings. Any discrepancies or omissions in the drawing shall be reported to the architect immediately in writing. All work to conform to most recent applicable norms, bylaws and codes for all given trades.

ARCHITECTURE

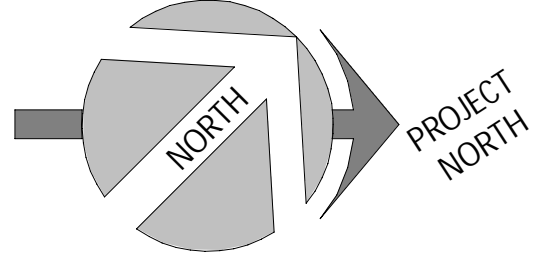
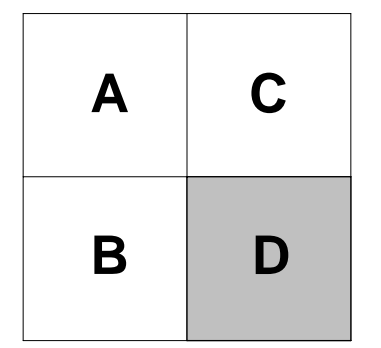
ENLARGED SITE PLAN 2/4

DRAWN BY: AT CHECKED BY: AH/EB

SCALE: As indicated

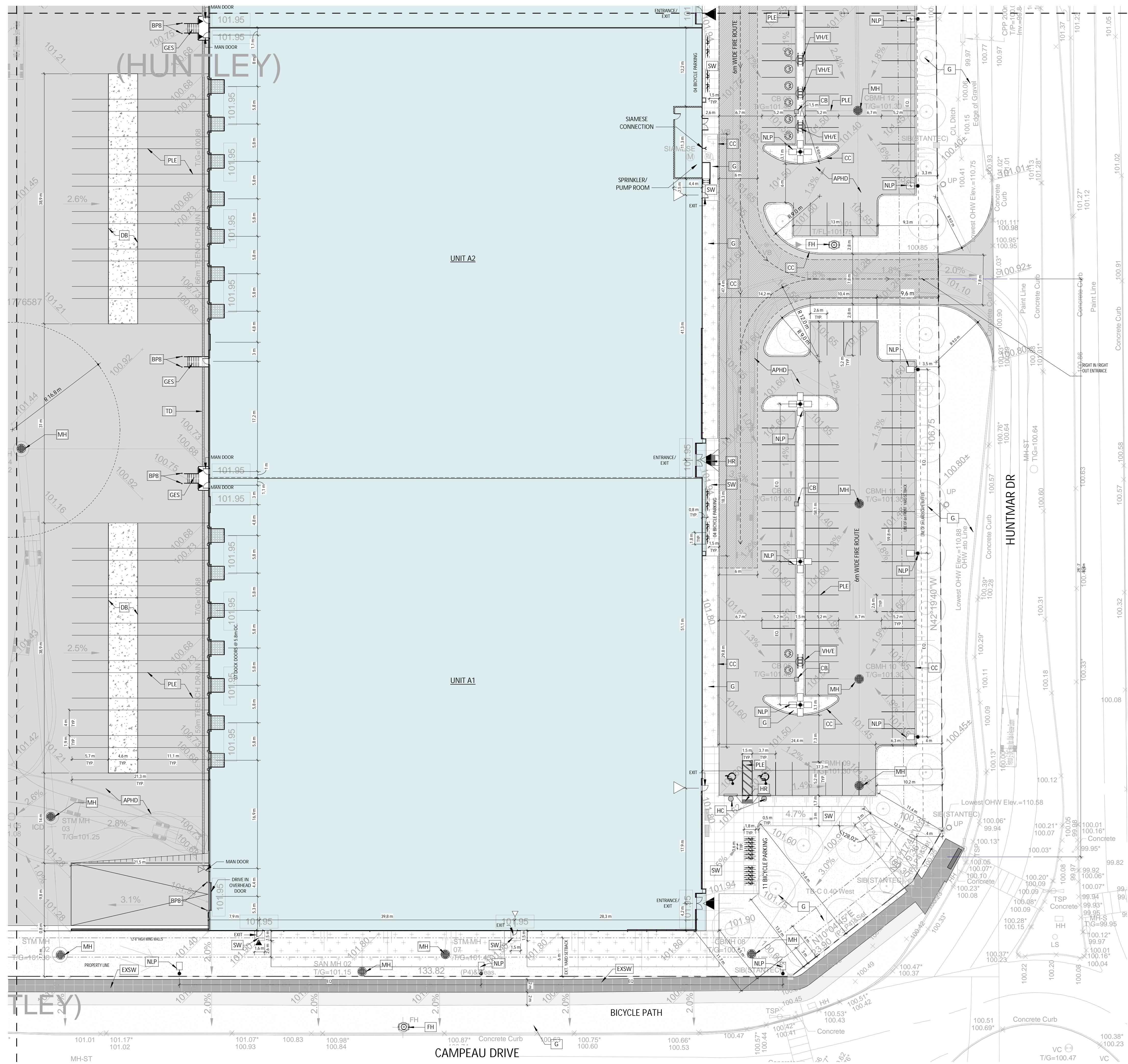
FOUO: 22081 **A102** R1

ENLARGED SITE PLAN 2/4
1
1:300 A102



SYMBOLS LEGEND - SITE DETAIL

- NEW BUILDINGS
- APHD ASPHALT PAVING, HEAVY DUTY. SEE CIVIL
- APLD ASPHALT PAVING, LIGHT DUTY. SEE CIVIL
- CC EXTERIOR CONCRETE CURB. SEE CIVIL
- G GRASS OR OTHER LANDSCAPING. SEE LANDSCAPE
- ECB EXTERIOR CONCRETE BASE. SEE STRUCTURE FOR DETAILS
- NLP NEW LIGHT POLE REFER TO ELECTRICAL
- EXSW EXISTING SIDEWALK
- SW CONCRETE SIDEWALK. SEE CIVIL
- HC HANDICAP PARKING SIGN
- PLE YELLOW PAINTED LINE - EXTERIOR
- BG6 BG8 GALVANIZED BOLLARD, 6"Ø x 5'-0" HT. OR 8"Ø x 5'-0" HT., FULL WITH CONCRETE, CLOSED END WITH GALVANIZED CAP. INSTALLED IN A CONCRETE SONOTUBE OF 20"Ø @ 5'-0" DEPTH. MIN.
- BP6 BP8 YELLOW PAINTED BOLLARD, 6"Ø x 4'-0" HT. OR 8"Ø x 4'-0" HT., 1'-0" DEPTH, FULL WITH CONCRETE, CLOSED END WITH CAP.
- GES GALVANIZED EXIT STAIR
- HR HANDICAP RAMP - SEE SPECIFICATIONS / CIVIL ENGINEERING PLAN RAMP SLOPE: 1:10-1:12
- VHE CHARGER FOR ELECTRIC/HYBRID VEHICLES (DOUBLE). PROVIDE 100mm HIGH CONCRETE BASE. WHEN NOT POSITIONED ON A SIDEWALK. COORDINATE THE SIZE OF THE BASE WITH CHOSEN CHARGER MODEL. SEE SPEC. AND ELECTRICAL
- FH FIRE HYDRANT
- SC SIAMESE FIRE DEPT CONNECTION. SEE CIVIL AND FIRE PROTECTION
- MH MANHOLE. SEE CIVIL
- CB CATCH BASIN. SEE CIVIL
- TD TRENCH DRAIN. SEE CIVIL
- DB CONCRETE SLAB (DOLLY PAD)



No	Date	ISSUED FOR SPA	Revision	By
1	2022-12-16	ISSUED FOR SPA		

ROSEFELLOW KANATA
 405 HUNTMAR DR.
 CITY OF OTTAWA ONTARIO



Copyright GKC Architects - Not to be used for any other project without the architect's written consent. All dimensions and conditions must be verified on site. Do not scale drawings. Any discrepancies or omissions in the drawing shall be reported to the architect immediately in writing. All work to conform to most recent applicable norms, bylaws and codes for all given trades.

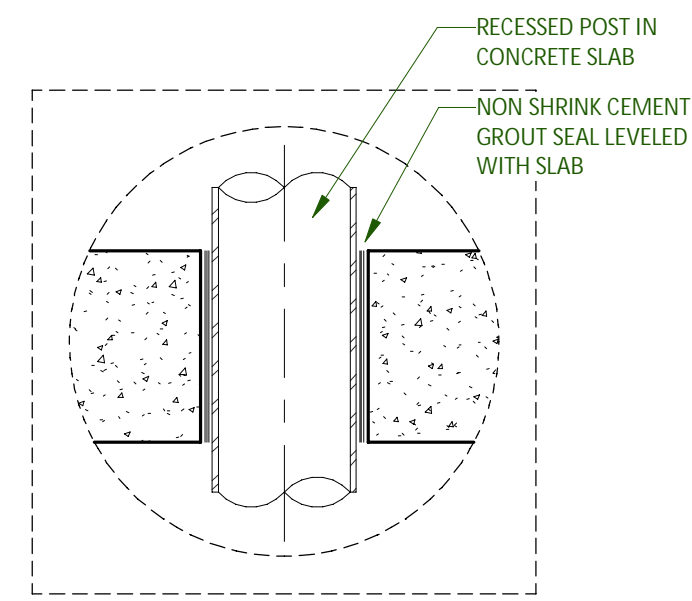
ARCHITECTURE

ENLARGED SITE PLAN 4/4

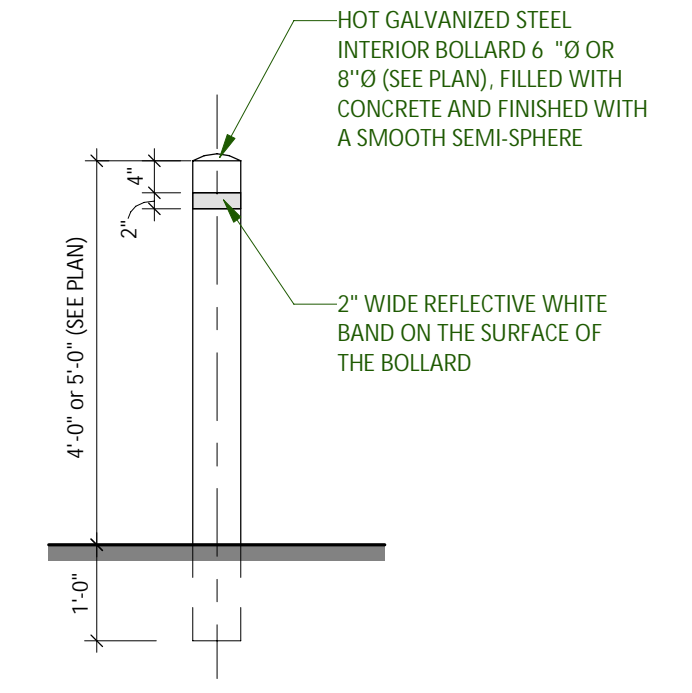
DRAWN BY: AT CHECKED BY: AH/EB
 SCALE: As indicated
 FOLD: 22081 A104 R1

ENLARGED SITE PLAN 4/4
 1
 1:300 A104

A	C
B	D

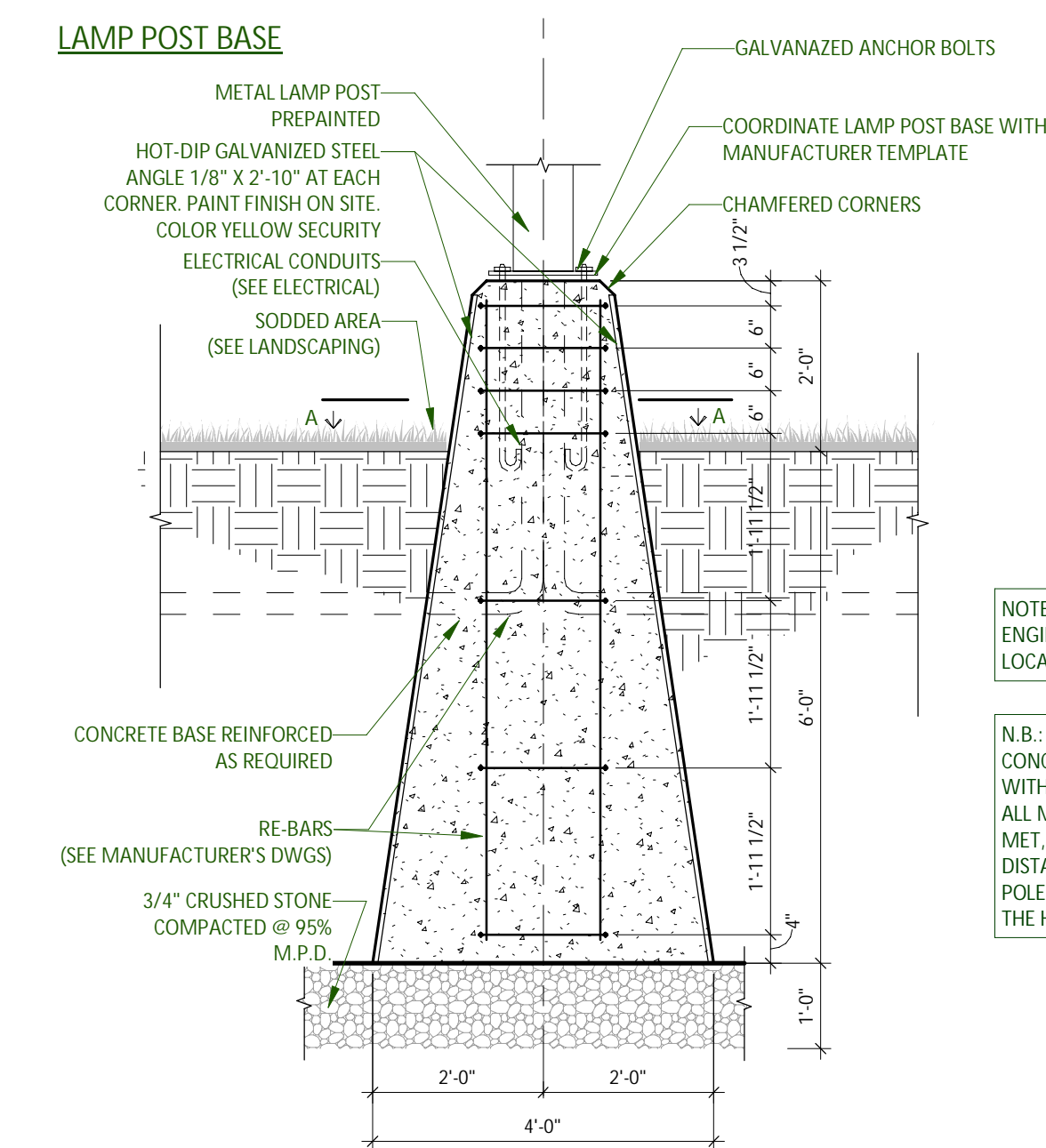
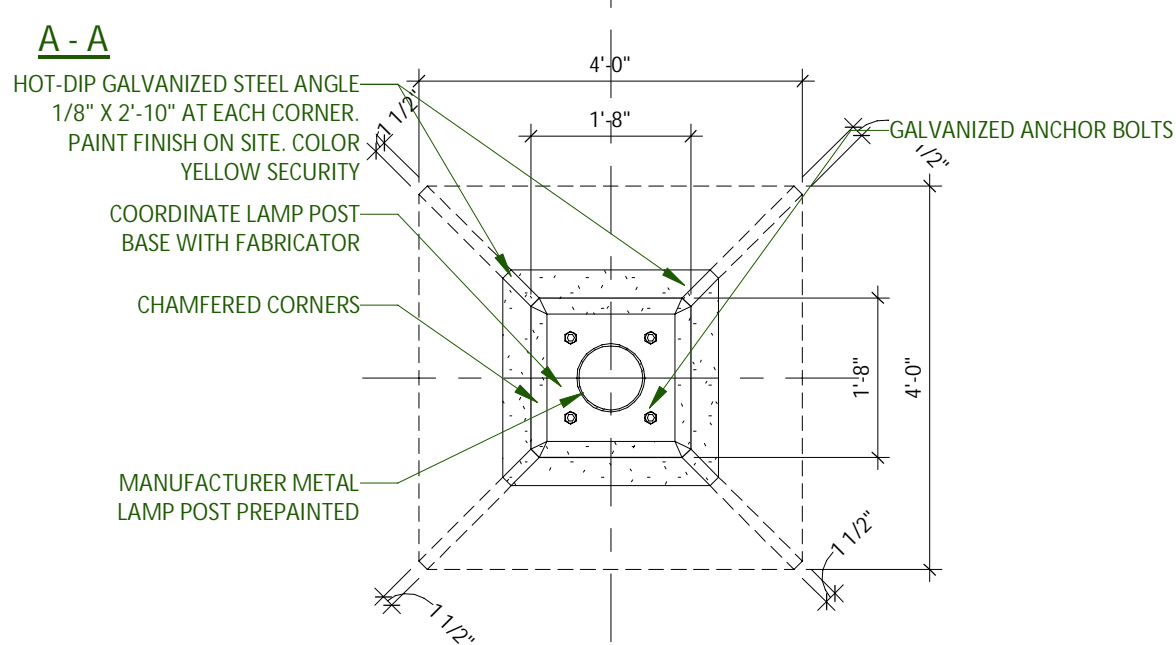
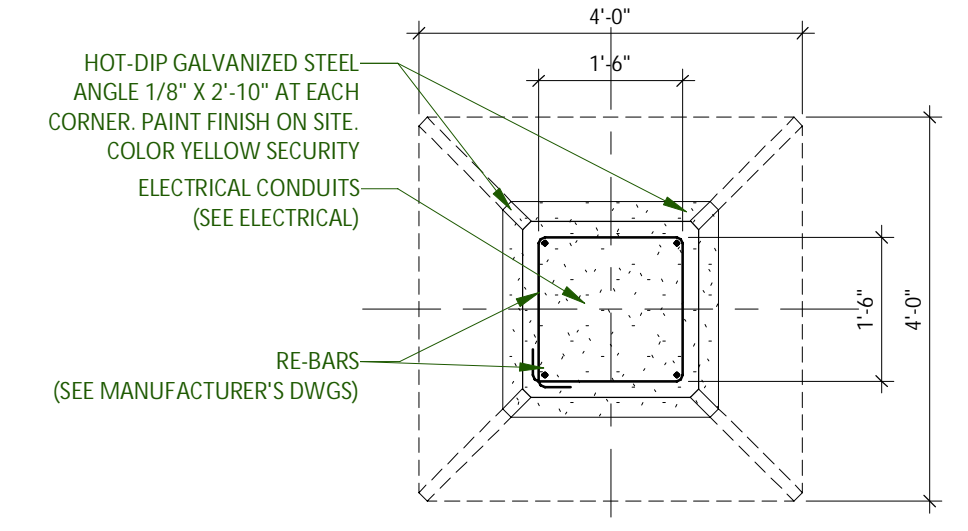


BOLLARD CONCRETE SLAB 7
1:8 A110



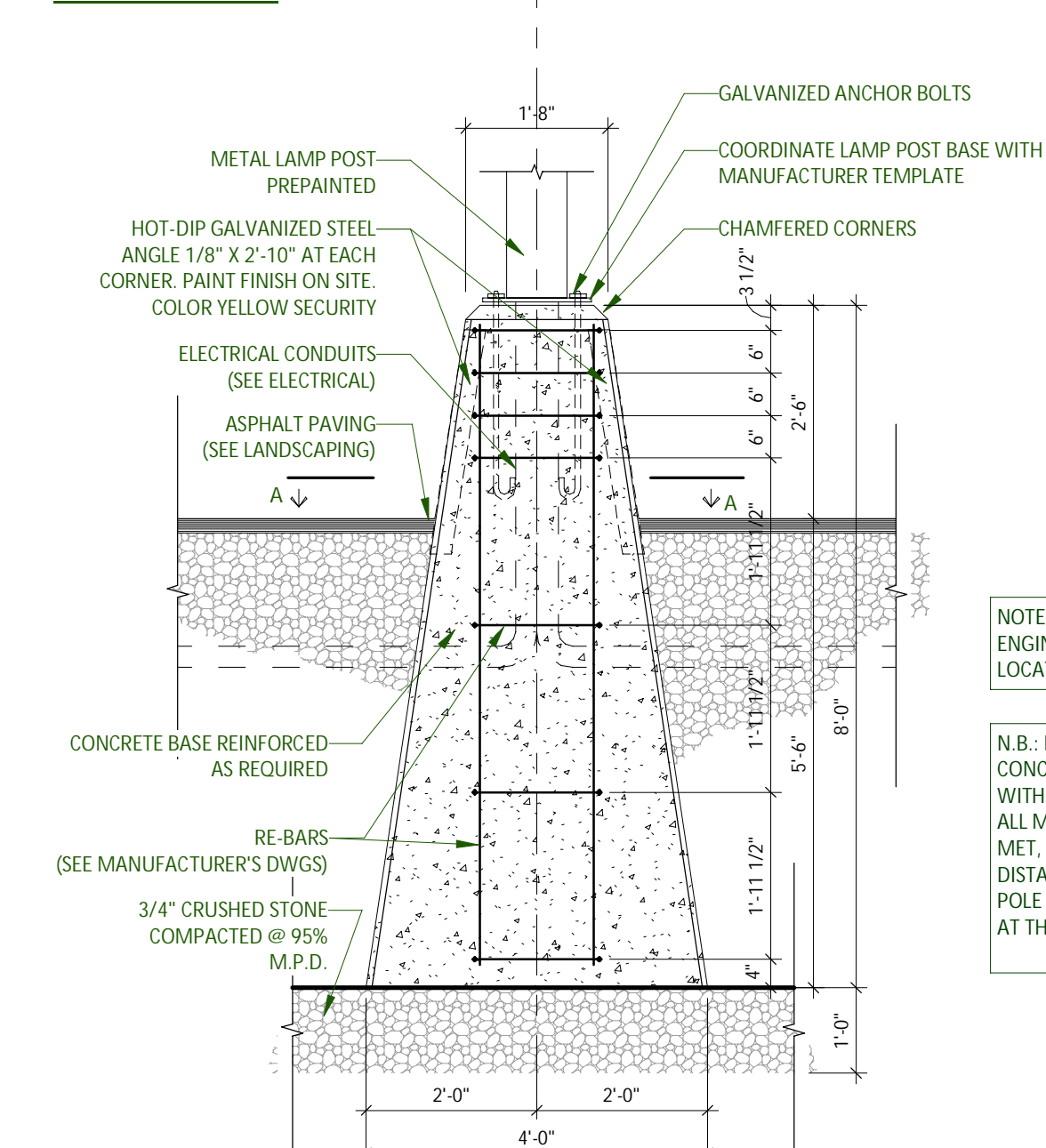
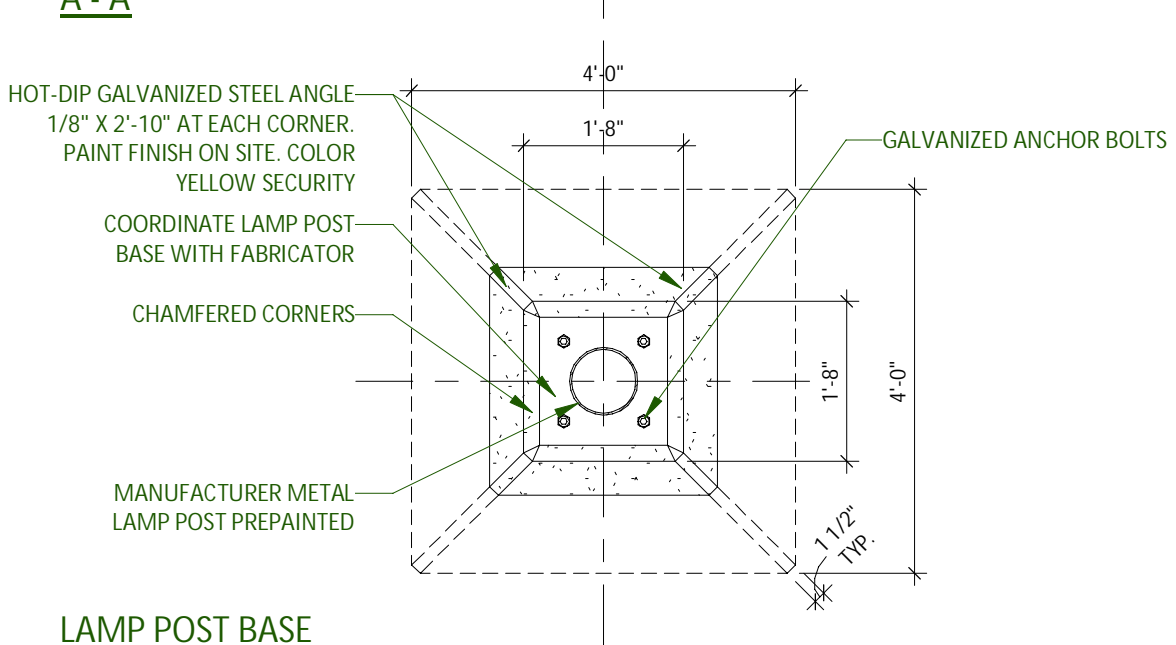
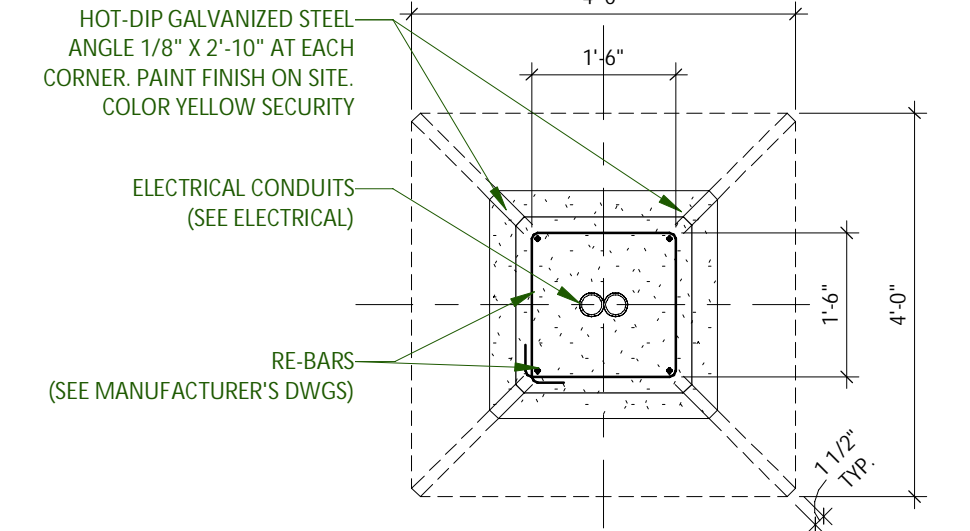
BOLLARD TYPE BP6 AND BP8 8
1:24 A110

IMPORTANT: BEFORE STARTING WORK, COORDINATE SIZE OF CONCRETE BASE WITH BASE PLATE TEMPLATE AND ANCHOR BOLTS OF LIGHT POLE WITH MANUFACTURER SHOP DRAWINGS

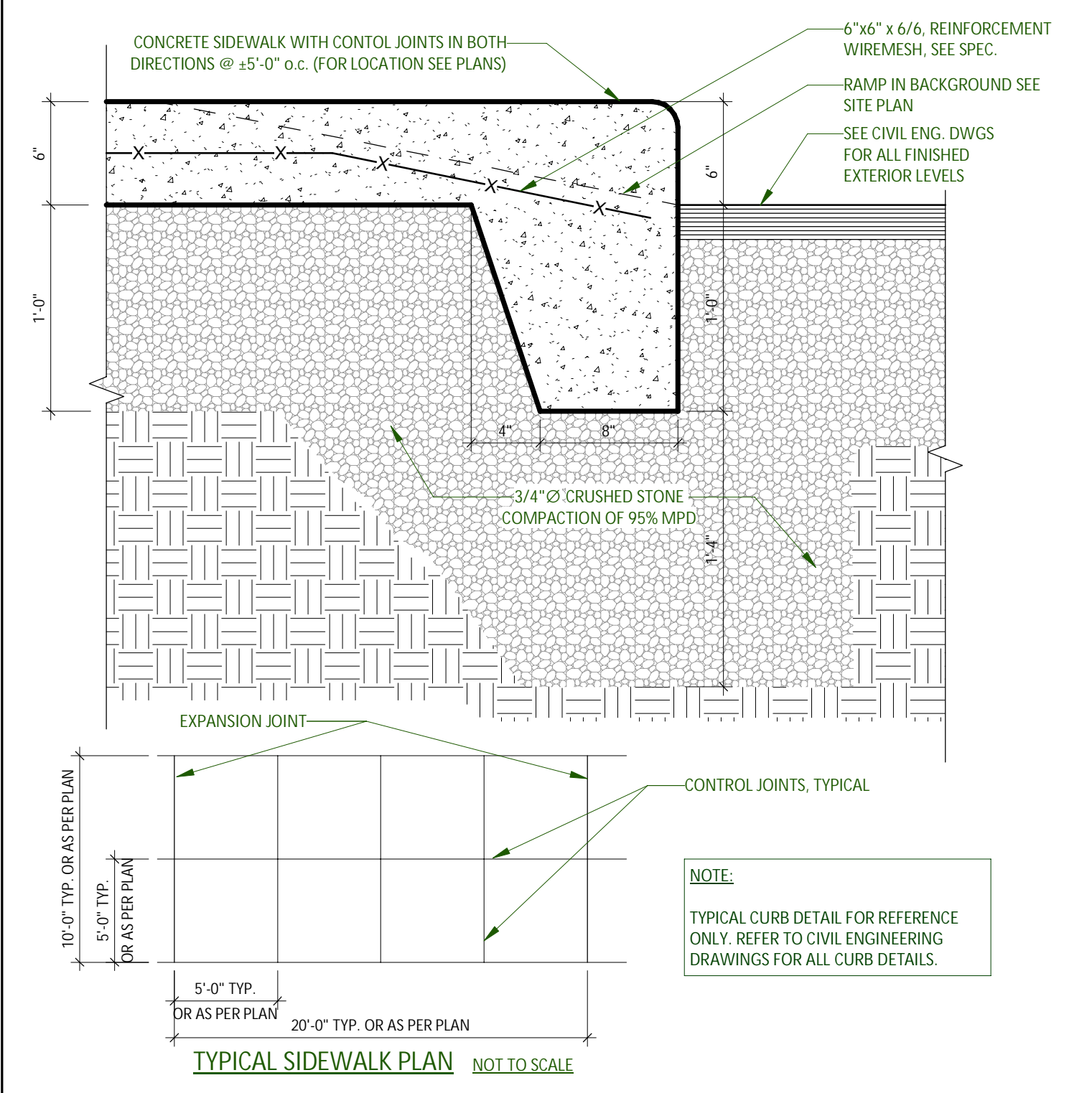


LAMP POST BASE - GRASS 1
1:24

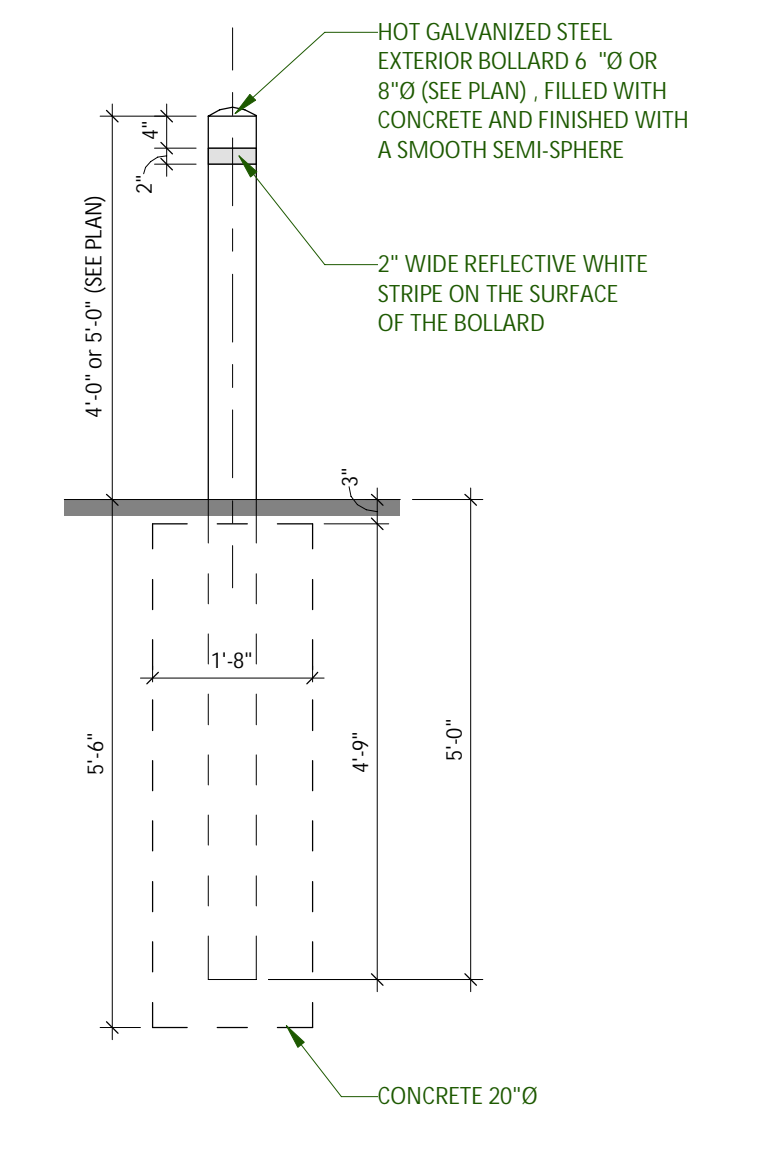
IMPORTANT: BEFORE STARTING WORK, COORDINATE SIZE OF CONCRETE BASE WITH BASE PLATE TEMPLATE AND ANCHOR BOLTS OF LIGHT POLE WITH MANUFACTURER SHOP DRAWINGS



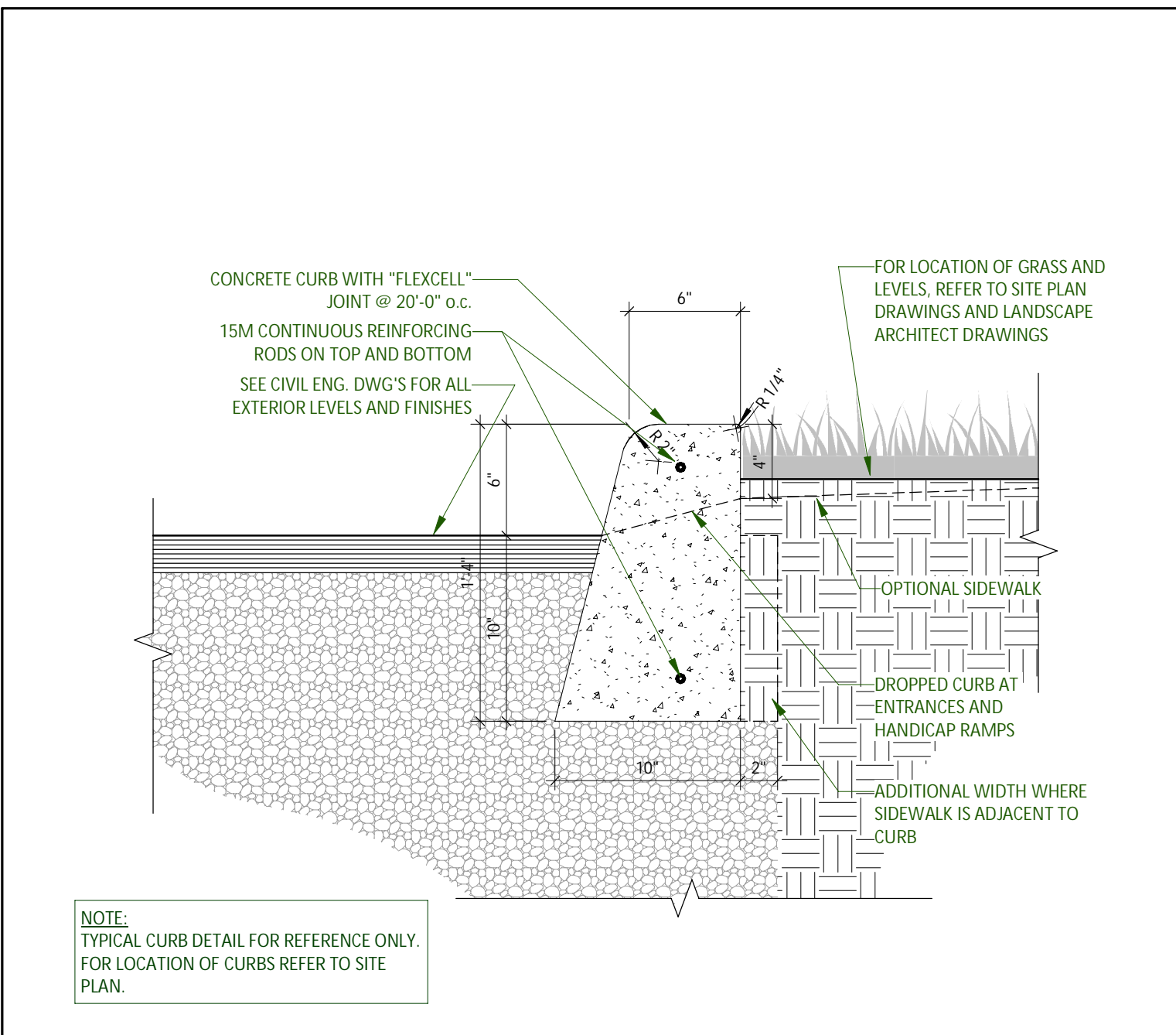
LAMP POST BASE - ASPHALT 2
1:24



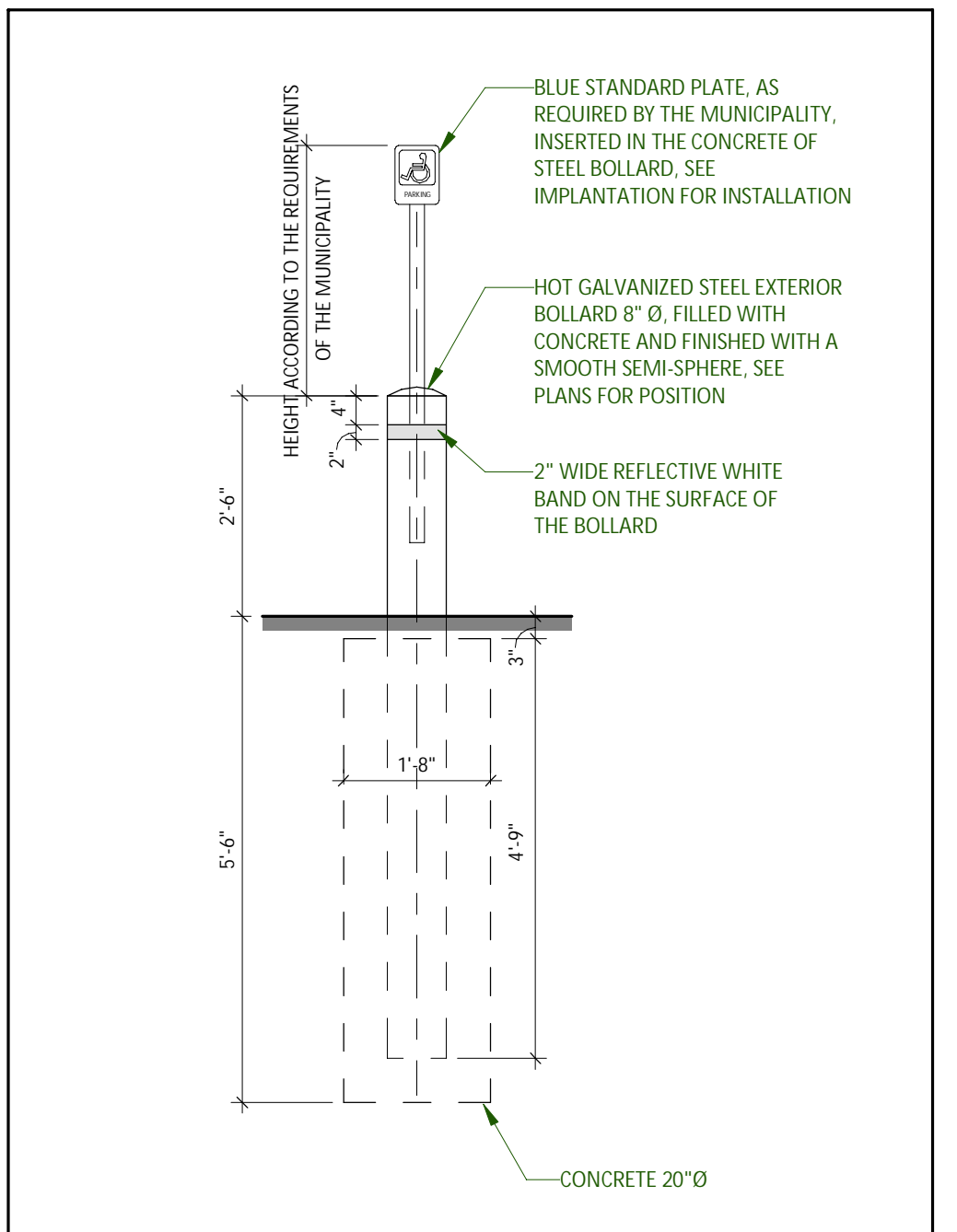
TYPICAL CONCRETE SIDEWALK 5
1:8 A110



BOLLARD TYPE BG6, BG8 6
1:24 A110



CONCRETE CURB 3
1:8 A110



BOLLARD - SIGN FOR DISABLED 4
1:24 A110

No.	Date	Revision	By
1	2022-12-16	ISSUED FOR SPA	

ROSEFELLOW KANATA
405 HUNTMAR DR. CITY OF OTTAWA ONTARIO



Copyright GKC Architects. Not to be used for any other project without the architect's written consent. All dimensions and conditions must be verified on site. Do not scale drawings. Any discrepancies or omissions in the drawing shall be reported to the architect immediately in writing. All work to conform to most recent applicable norms, bylaws and codes for all given trades.

ARCHITECTURE
SITE DETAILS

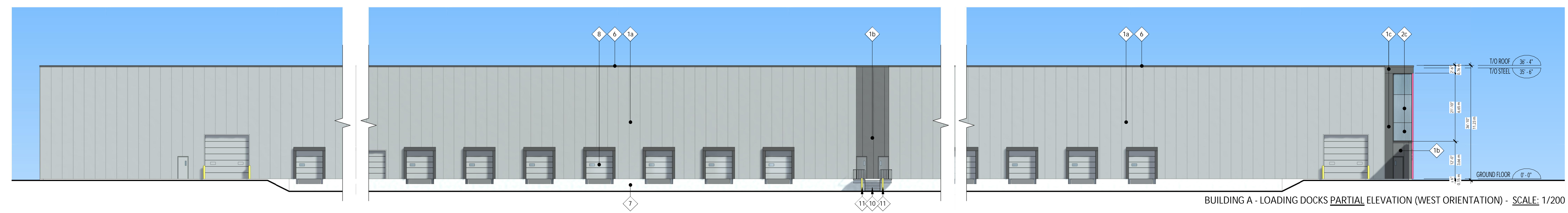
DRAWN BY: AH CHECKED BY: EB

SCALE: As indicated

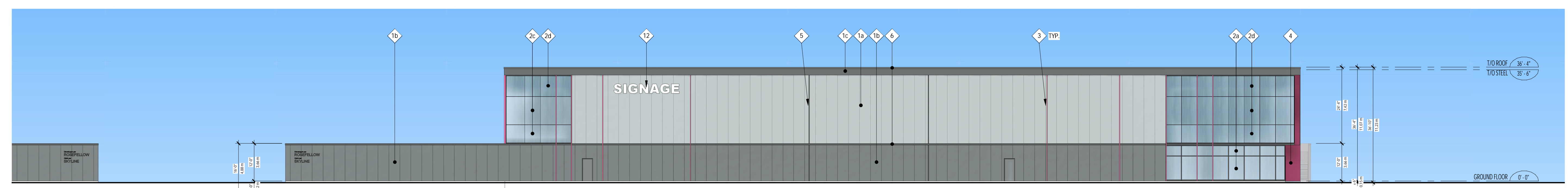
FOUO: 22081 **A110 R1**



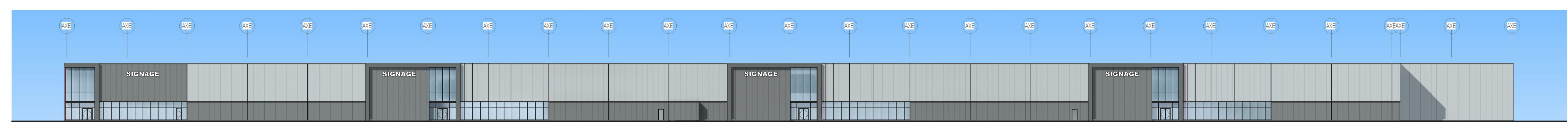
BUILDING A - LOADING DOCKS ELEVATION (WEST ORIENTATION) - SCALE: 1/500



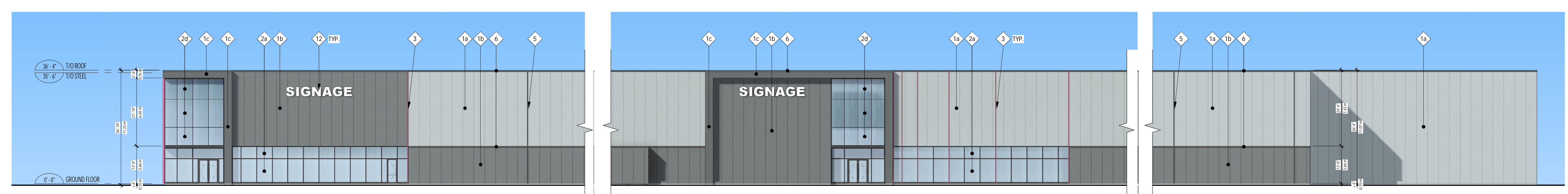
BUILDING A - LOADING DOCKS PARTIAL ELEVATION (WEST ORIENTATION) - SCALE: 1/200



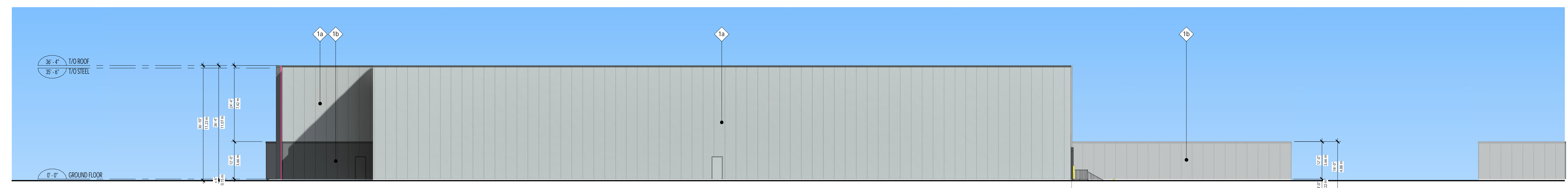
BUILDING A - CAMPEAU DRIVE ELEVATION (SOUTH ORIENTATION) - SCALE: 1/200



BUILDING A - HUNTMAR DRIVE ELEVATION (EAST ORIENTATION) - SCALE: 1/500



BUILDING A - HUNTMAR DRIVE PARTIAL ELEVATION (EAST ORIENTATION) - SCALE: 1/200



BUILDING A - REAR ELEVATION (NORTH ORIENTATION) - SCALE: 1/200

ELEVATIONS LEGEND (EXTERIOR FINISHES):

- 1a VERTICAL INSULATED METAL PANEL (IMP V.), 42" WIDE, 3" THICK, MICRO-RIB FINISH, COLOR: DOVE GRAY (REF. KINGSPAN)
- 1b VERTICAL INSULATED METAL PANEL (IMP V.), 42" WIDE, 3" THICK, MICRO-RIB FINISH, COLOR: ZINC GRAY (REF. KINGSPAN)
- 1c INSULATED METAL PANEL, 30" WIDE, 3" THICK, SMOOTH FINISH, COLOR: ZINC GRAY (REF. KINGSPAN)

ALL GLASS SURFACES, WILL HAVE BIRD FRIENDLY, HIGH CONTRAST PATTERN PRINTED ON GLASS SURFACE #1 (CERAMIC FRIT). THE PATTERN WILL BE CONSISTING OF 4MM DIAMETER CIRCLES, WHICH ARE 50MM APART FROM EACH OTHER

- 2a CLEAR THERMO GLASS, INT: CLEAR ANODISED ALUMINIUM CURTAIN WALL, EXT: VERTICAL AND HORIZONTAL STANDARD CAP (3/4" DEPTH), COLOR CHARCOAL
- 2b SPANDREL THERMO GLASS, INT: CLEAR ANODISED ALUMINIUM CURTAIN WALL, EXT: VERTICAL AND HORIZONTAL STANDARD CAP (3/4" DEPTH), COLOR CHARCOAL
- 2c CLEAR THERMO GLASS, INT: CLEAR ANODISED ALUMINIUM CURTAIN WALL, EXT: BLACK SILICON SEALS IN ALL DIRECTIONS, REFLECTION GREATER THAN 2s
- 2d SPANDREL THERMO GLASS, INT: CLEAR ANODISED ALUMINIUM CURTAIN WALL, EXT: BLACK SILICON SEALS IN ALL DIRECTIONS, REFLECTION GREATER THAN 2s

- 3 ALUMINIUM VERTICAL MOLDING, MULLION CAP 2 1/2" WIDE AND 6" DEEP, COLOR PINK (PANTONE #1915 C)
- 4 1/8" THICK ALUMINIUM PANEL, CONCEALED BRACKETS, COLOR PINK (PANTONE #1915 C)
- 5 VERTICAL MOLDING, +2.5" WIDE, APPLIED ON IMP V., COLOR CHARCOAL (TO MATCH ZINC GRAY IMP PANEL)
- 6 6" PREFINISHED METAL FLASHING, COLOR CHARCOAL (TO MATCH ZINC GRAY IMP PANEL)
- 7 EXPOSED FOUNDATION WALL
- 8 PREFINISHED GARAGE DOOR, COLOR GREY (TO MATCH 1a)
- 9 DOOR, COLOR TO MATCH ADJOINING WALL, TYPICAL
- 10 GALVANISED STAIR AND HANDRAIL
- 11 GALVANIZED BOLLARDS 8"Ø FILLED WITH CONCRETE
- 12 SIGN APPLIED ON THE INSULATED METAL PANEL WALL, PROVIDE ELECTRICAL CONNECTION AND STRUCTURAL SUPPORTS BEHIND THE WALL

No	Date	Revision	By
1	2022-12-16	ISSUED FOR SPA	

ROSEFELLOW KANATA
405 HUNTMAR DR.
CITY OF OTTAWA ONTARIO



Copyright GKC Architects - Not to be used for any other project without the architect's written consent. All dimensions and conditions must be verified on site. Do not scale drawings. Any discrepancies or omissions in the drawing shall be reported to the architect immediately in writing. All work to conform to most recent applicable norms, bylaws and codes for all given trades.

ARCHITECTURE
BUILDING A
COLORED ELEVATIONS

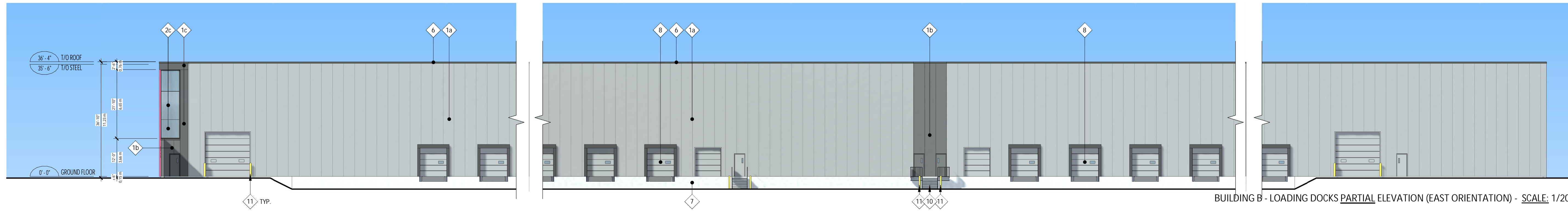
DRAWN BY: OC CHECKED BY: EB

SCALE: As indicated

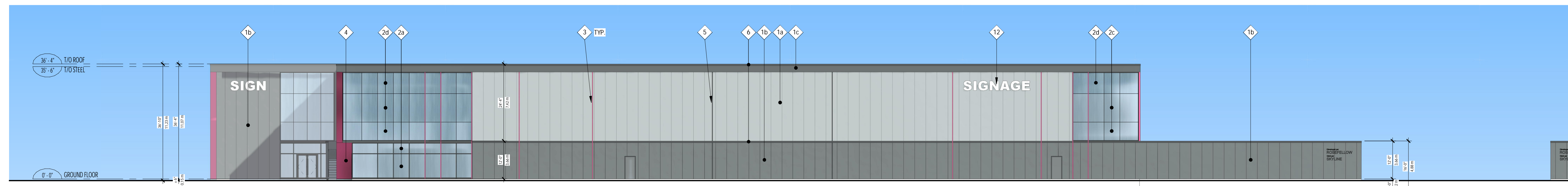
FOUO: 22081 P400 R1



BUILDING B - LOADING DOCKS ELEVATION (EAST ORIENTATION) - SCALE: 1/500



BUILDING B - LOADING DOCKS PARTIAL ELEVATION (EAST ORIENTATION) - SCALE: 1/200

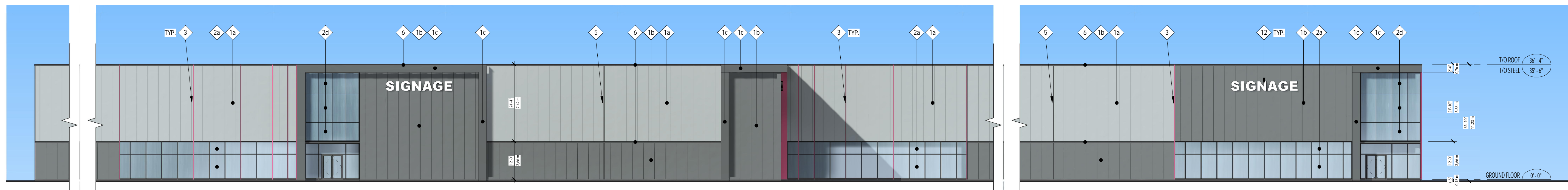


BUILDING B - CAMPEAU DRIVE ELEVATION (SOUTH ORIENTATION) - SCALE: 1/200

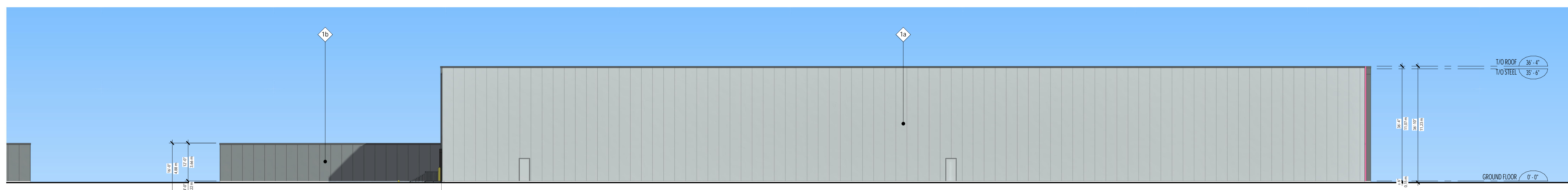
ELEVATIONS LEGEND (EXTERIOR FINISHES)	
1a	VERTICAL INSULATED METAL PANEL (IMP V.), 42" WIDE, 3" THICK, MICRO-RIB FINISH, COLOR: DOVE GRAY (REF. KINGSPAN)
1b	VERTICAL INSULATED METAL PANEL (IMP V.), 42" WIDE, 3" THICK, MICRO-RIB FINISH, COLOR: ZINC GRAY (REF. KINGSPAN)
1c	INSULATED METAL PANEL, 30" WIDE, 3" THICK, SMOOTH FINISH, COLOR: ZINC GRAY (REF. KINGSPAN)
ALL GLASS SURFACES, WILL HAVE BIRD FRIENDLY, HIGH CONTRAST PATTERN PRINTED ON GLASS SURFACE #1 (CERAMIC FRIT). THE PATTERN WILL BE CONSISTING OF 4MM DIAMETER CIRCLES, WHICH ARE 50MM APART FROM EACH OTHER	
2a	CLEAR THERMO GLASS, INT.: CLEAR ANODISED ALUMINIUM CURTAIN WALL, EXT.: VERTICAL AND HORIZONTAL STANDARD CAP (3/4" DEPTH), COLOR: CHARCOAL
2b	SPANDREL THERMO GLASS, INT.: CLEAR ANODISED ALUMINIUM CURTAIN WALL, EXT.: VERTICAL AND HORIZONTAL STANDARD CAP (3/4" DEPTH), COLOR: CHARCOAL
2c	CLEAR THERMO GLASS, INT.: CLEAR ANODISED ALUMINIUM CURTAIN WALL, EXT.: BLACK SILICON SEALS IN ALL DIRECTIONS, REFLECTION GREATER THAN 2a
2d	SPANDREL THERMO GLASS, INT.: CLEAR ANODISED ALUMINIUM CURTAIN WALL, EXT.: BLACK SILICON SEALS IN ALL DIRECTIONS, REFLECTION GREATER THAN 2b
3	ALUMINIUM VERTICAL MOLDING - MULLION CAP 2 1/2" WIDE AND 6" DEEP, COLOR: PINK (PANTONE #1915 C)
4	1/8" THICK ALUMINIUM PANEL, CONCEALED BRACKETS, COLOR: PINK (PANTONE #1915 C)
5	VERTICAL MOLDING, +2.5" WIDE, APPLIED ON IMP V., COLOR: CHARCOAL (TO MATCH ZINC GRAY IMP PANEL)
6	6" PREFINISHED METAL FLASHING, COLOR: CHARCOAL (TO MATCH ZINC GRAY IMP PANEL)
7	EXPOSED FOUNDATION WALL
8	PREFINISHED GARAGE DOOR, COLOR: GREY (TO MATCH 1a)
9	DOOR, COLOR TO MATCH ADJOINING WALL, TYPICAL
10	GALVANISED STAIR AND HANDRAIL
11	GALVANISED BOLLARDS 8"Ø FILLED WITH CONCRETE
12	SIGN APPLIED ON THE INSULATED METAL PANEL WALL, PROVIDE ELECTRICAL CONNECTION AND STRUCTURAL SUPPORTS BEHIND THE WALL



BUILDING B - JOURNEYMAN STREET ELEVATION (WEST ORIENTATION) - SCALE: 1/500



BUILDING B - JOURNEYMAN STREET PARTIAL ELEVATION (WEST ORIENTATION) - SCALE: 1/200



BUILDING B - REAR ELEVATION (NORTH ORIENTATION) - SCALE: 1/200

No	Date	Revision	By
1	2022-12-16	ISSUED FOR SPA	

ROSEFELLOW KANATA
405 HUNTMAR DR.
CITY OF OTTAWA ONTARIO



Copyright GKC Architects - Not to be used for any other project without the architect's written consent. All dimensions and conditions must be verified on site. Do not scale drawings. Any discrepancies or omissions in the drawing shall be reported to the architect immediately in writing. All work to conform to most recent applicable norms, bylaws and codes for all given trades.

ARCHITECTURE
BUILDING B
COLORED ELEVATIONS

DRAWN BY: OC CHECKED BY: EB
SCALE: As indicated
FOUO: 22081 P401 R1