

LOTS 24 AND 25  
REGISTERED PLAN 462  
CITY OF OTTAWA

Surveyed by Annis, O'Sullivan, Vollebek Ltd.

Scale 1 : 250



Metric  
DISTANCES SHOWN ON THIS PLAN ARE IN METRES AND CAN BE CONVERTED TO FEET BY DIVIDING BY 0.3048

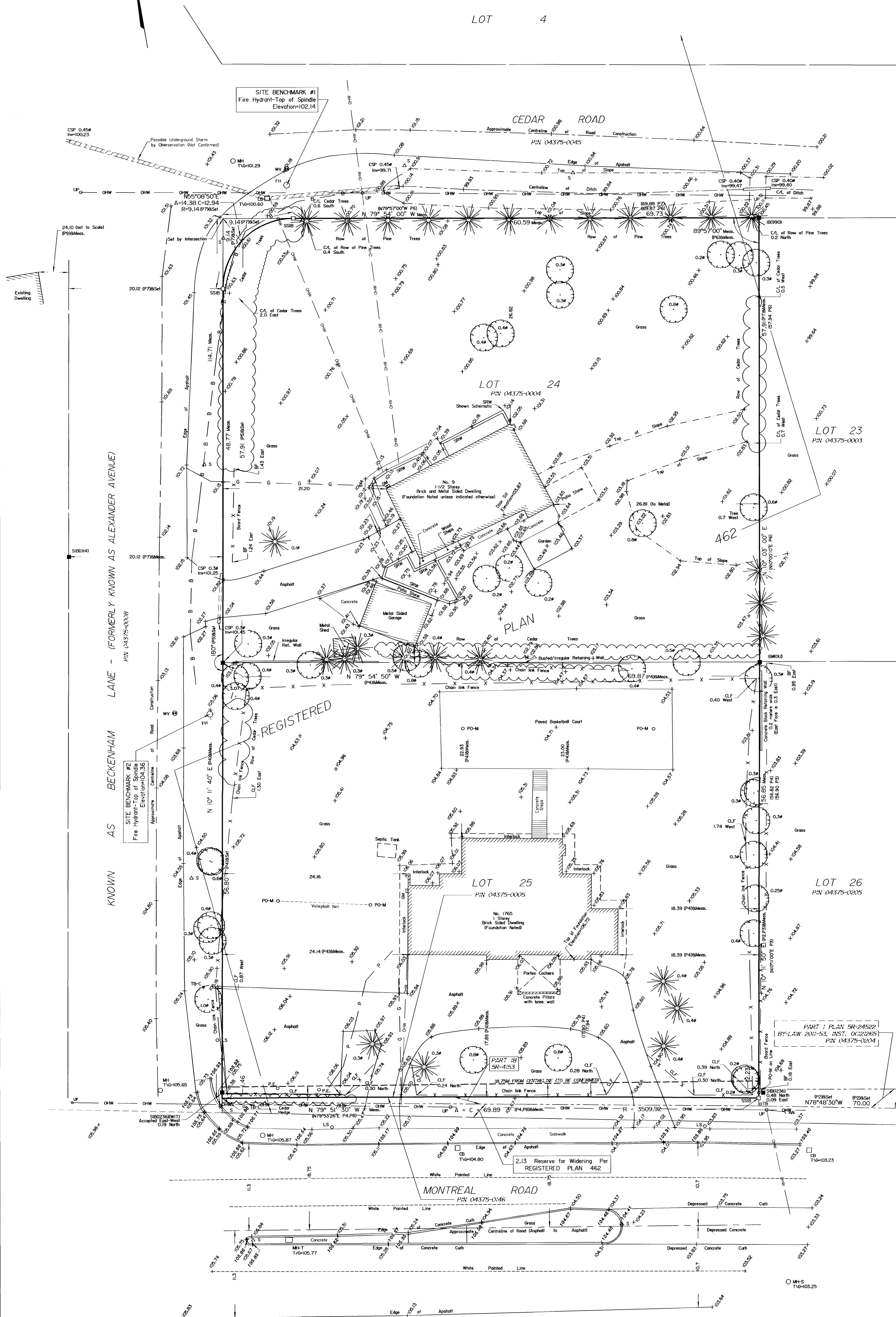
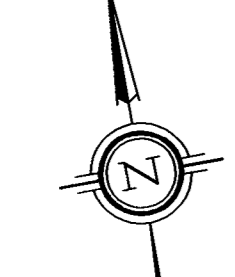
Surveyor's Certificate

- I CERTIFY THAT:
- This survey and plan are correct and in accordance with the Surveys Act, the Surveyors Act and the regulations made under them.
  - The survey was completed on March 31, 2021.

April 1, 2021  
Date

*Walter J. Allison*  
Walter J. Allison  
Ontario Land Surveyor

ANNIS, O'SULLIVAN, VOLLEBEK LTD grants to \_\_\_\_\_ (The Client), their solicitors, mortgagees, and other related parties, permission to use original, signed, sealed copies of the Topographical Plan of Survey in transactions involving The Client.



Notes & Legend

Denotes	
—□—	Survey Monument Planted
—■—	Survey Monument Found
SIB	Standard Iron Bar
SSIB	Short Standard Iron Bar
IB	Iron Bar
(WIT)	Witness
Mens.	Measured
(AOG)	Annis, O'Sullivan, Vollebek Ltd.
(PI)	Plan 4R-31670
(P2)	Plan 4R-24552
(P3)	Topographic Plan by Stantec Geomatics Ltd. Job No. 16161862V-111
(P4)	Plan by Paul A. Riddell Ltd, Ref No. 05-1107
(P5)	(AOG) Plan dated, July 30, 1984
(P6)	Plan by Payette, Himma, Delorme Ltd Ref No. 67-94
(P7)	Registered Plan 462
(P8)	Plan 5R-4153
(P9)	Plan by Dutriscac & Johnson Inc., Index: OTT-462-1-1
○	Deciduous Tree
★	Coniferous Tree
○ FH	Fire Hydrant
○ W	Water Valve
○ MH-S	Maintenance Hole (Sanitary)
○ MH	Maintenance Hole (Unidentified)
□	Catch Basin
OU	Origin Unknown
CSP	Corrugated Steel Pipe
T/G	Top of Grate
INV	Invert
○ TB	Unidentified Terminal Box
△ S	Sign
BF	Board Fence
○ PO-M	Metal Pole
○ UP	Utility Pole
△ AN	Anchor
○ LS	Light Standard
∅	Diameter
+ 65.00	Location of Elevations
+ 65.00	Top of Concrete Curb Elevation
—	Property Line
— OHW	Overhead Wires
— G	Underground Gas
— B	Underground Bell
— P	Underground Hydro

ASSOCIATION OF ONTARIO LAND SURVEYORS  
PLAN SUBMISSION FORM  
V-11262

THIS PLAN IS NOT VALID UNLESS IT IS AN EMBOSSED ORIGINAL COPY ISSUED BY THE SURVEYOR IN ACCORDANCE WITH Regulation 1026, Section 29 (2)

Topographic data was collected under Winter Conditions. Snow cover and ice preclude determining location and elevation of some topographical data that is otherwise visible.

Bearings & Coordinates are MTM grid, derived from specified control monuments 01019800604, 01019800626 and 01919740553, MTM Zone 9, NAD-83 (Original). Monument 1 - 01019800604 Northing 5020100.932 Easting 403411.048 Monument 2 - 01019800626 Northing 5020560.223 Easting 415315.091 Monument 3 - 01919740553 Northing 5012552.112 Easting 393256.224 Coordinate values are to urban accuracy in accordance with O. Reg. 216/10.

For bearing comparisons, a rotation of 0°43'00" counter-clockwise was applied to bearings on Plan 4R-24552.

ELEVATION NOTES

- Elevations shown are geodetic and are referred to the CGVD28 geodetic datum.
- It is the responsibility of the user of this information to verify that the job benchmark has not been altered or disturbed and that its relative elevation and description agrees with the information shown on this drawing.

UTILITY NOTES

- This drawing cannot be accepted as acknowledging all of the utilities and it will be the responsibility of the user to contact the respective utility authorities for confirmation.
- Only visible surface utilities were located.
- A field location of underground plant by the pertinent utility authority is mandatory before any work involving breaking ground, probing, excavating etc.

© Annis, O'Sullivan, Vollebek Ltd, 2021. THIS PLAN IS PROTECTED BY COPYRIGHT

**ANNIS, O'SULLIVAN, VOLLEBEK LTD.**  
165 Bay Street  
Embsay, Ont. K0A 1W1  
Phone: (613) 443-3364  
Email: embsay@annisov.com

Ontario Land Surveyors