

PLAN OF SUBDIVISION OF PART OF LOT 20 CONCESSION 4 (Rideau Front) Geographic Township of Nepean CITY OF OTTAWA
 Surveyed by Annis, O'Sullivan, Vollebakk Ltd.

Scale 1:750
 Metric
 DISTANCES AND COORDINATES SHOWN ON THIS PLAN ARE IN METRES AND CAN BE CONVERTED TO FEET BY DIVIDING BY 0.3048.

Surveyor's Certificate
 I CERTIFY THAT:
 1. This survey and plan are correct and in accordance with the Surveys Act, the Surveyors Act and the Land Titles Act and the regulations made under them.
 2. The survey was completed on the 25th day of February, 2019.

Date: May 7/2019
 Signature: Andre Roy
 Title: Ontario Land Surveyor

OWNER'S CERTIFICATE
 THIS IS TO CERTIFY THAT:
 1. Blocks 1 to 14, both inclusive, the Streets, namely, rue Forager Street and rue Lusk Street, the Street Widening, namely, Block 19 and the Reserves, namely, Blocks 15, 16, 17 and 18 have been laid out in accordance with our instructions.
 2. The Streets and Street Widening are dedicated to City of Ottawa as public highways.

Dated the 8 day of May 2019
 Signature: George Cary
 Title: Authorized Signing Officer
 2118885 ONTARIO INC.
 I have the authority to bind the corporation.

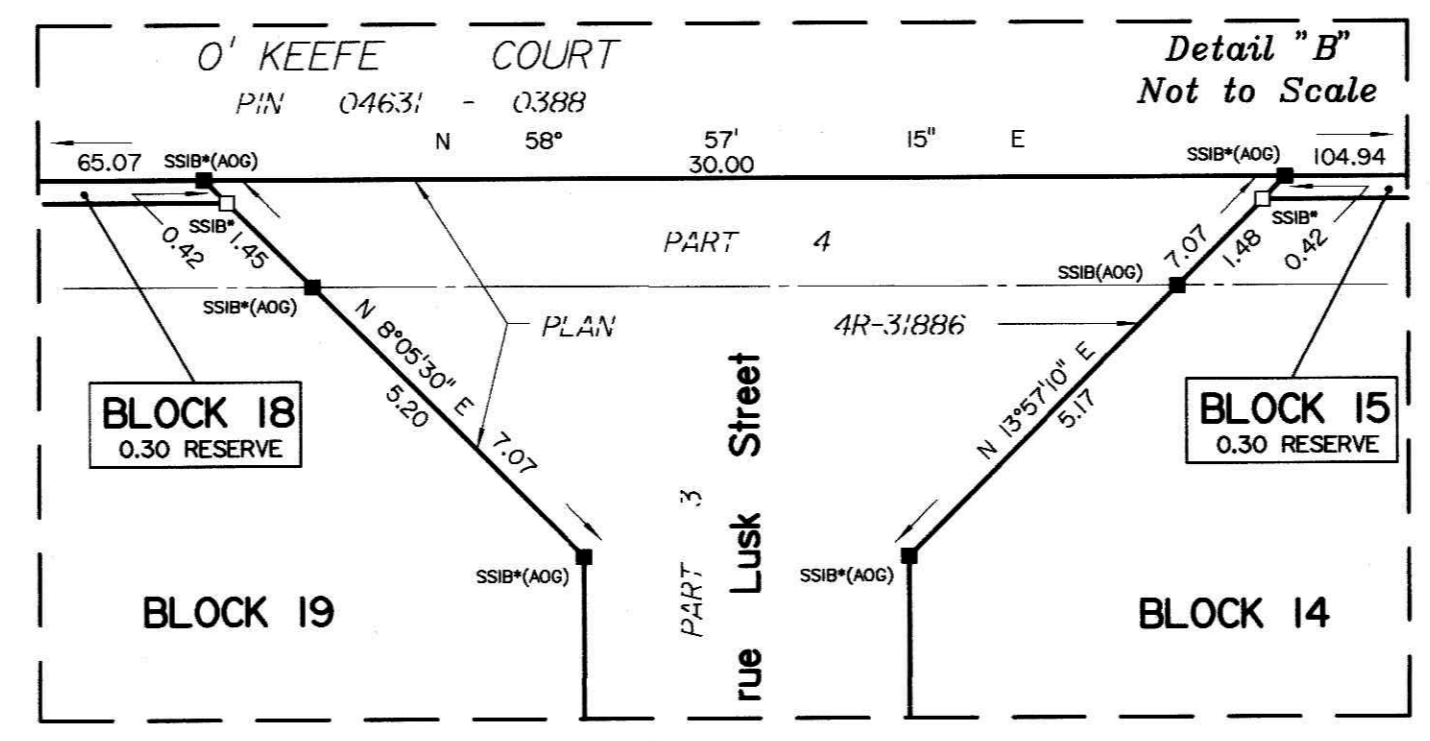
Dated the 10 day of May 2019
 Signature: Cuckoo Kocher
 Title: President
 DCR / PHOENIX DEVELOPMENT CORPORATION LIMITED
 I have the authority to bind the corporation.

NOTES AND LEGEND

- denotes Survey Monument Planted.
- denotes Survey Monument Found.
- SIB Standard Iron Bar.
- SSIB Short Standard Iron Bar.
- CC Cut Cross.
- IB Iron Bar.
- 0.3 long Survey Monument.
- (AOG) — Plan 4R-7852.
- (P1) — Plan 4R-20404.
- (P3) — Plan 4R-8856.
- (P4) — Plan SR-10261.

All planted survey monuments are IB's unless otherwise noted.
 Distances shown on curved limits are Arc distances unless otherwise noted.

Distances shown on this plan are ground distances and can be converted to grid distances by multiplying by the combined scale factor of 0.999921.
 Bearings are grid, derived from Can-Net 2016 Real Time Network GPS observations on reference points A and B, shown hereon, having a bearing of Nxx°xx'xx"W and are referenced to Specified Control Points 01919791338 and 01919871649, MTM Zone 9 (70°30' West Longitude) NAD-83 (original).
 Coordinates are derived from Can-Net 2016 Real Time Network GPS observations referenced to Specified Control Points 01919791338 and 01919871649, MTM Zone 9 (70°30' West Longitude) NAD-83 (original).
 Coordinate values are to urban accuracy in accordance with O. Reg. 216/10.
 01919791338 Northing 5000555.96 Easting 346140.91
 01919871649 Northing 5007189.87 Easting 372435.05
 Point A Northing 5015105.53 Easting 360398.72
 Point B Northing 5015323.48 Easting 360760.79
 Caution: Coordinates shown, in themselves, be used to re-establish corners or boundaries shown on this plan.



APPROVED UNDER SECTION 51 OF THE PLANNING ACT BY THE CITY OF OTTAWA
 THIS 26 DAY OF June 2019

Signature: Stephen Willis
 Title: General Manager
 PLANNING, INFRASTRUCTURE AND ECONOMIC DEVELOPMENT DEPARTMENT
 CITY OF OTTAWA

All of PIN 04467-0108; All of Block 17 and Part of Blocks 7, 10 and 11
 Part of PIN 04467-0112; All of Blocks 1 to 6, 8, 9, 12 to 16, 18, 19, rue Forager Street, rue Lusk Street and Part of Blocks 7, 10 and 11

PLAN 4M-1634
 I CERTIFY THAT THIS PLAN IS REGISTERED IN THE LAND REGISTRY OFFICE FOR THE LAND TITLES DIVISION OF OTTAWA-CARLETON NO. 4 AT 10:01 O'CLOCK ON THE 2 DAY OF July 2019 AND ENTERED IN THE PARCEL REGISTER FOR PROPERTY IDENTIFIERS 04467-0108 AND 04467-0112 AND THE REQUIRED CONSENTS ARE REGISTERED AS PLAN DOCUMENT NO. 0C214466

Signature: A. McMullen
 Title: REPRESENTATIVE FOR LAND REGISTRAR

This plan comprises all of PIN 04467-0108 and part of PIN 04467-0112.

ALL OF BLOCK 18, PART OF BLOCKS 1, 2, 3, 4, 14 AND 15 AND PART OF RUE LUSK STREET; SUBJECT TO EASEMENT INST. L7754391.

