

PLAN REVISED OCTOBER 26, 2012
TO ILLUSTRATE NEW TOPOGRAPHIC DATA
ALONG THE NORTHERLY AND WESTERLY
PROPERTY LIMITS.

PLAN REVISED MARCH 4, 2022
TO ILLUSTRATE NEW TOPOGRAPHIC DATA
ALONG THE NORTHERLY AND WESTERLY
PROPERTY LIMITS.

TOPOGRAPHICAL PLAN OF SURVEY OF
**PART OF LOT 3
CONCESSION 5 (RIDEAU FRONT)**
Geographic Township of Gloucester
CITY OF OTTAWA
Surveyed by Annis, O'Sullivan, Vollebek Ltd.

Scale 1:150
Metric
DISTANCES SHOWN ON THIS PLAN ARE IN METRES AND
CAN BE CONVERTED TO FEET BY DIVIDING BY 0.3048

Surveyor's Certificate
I CERTIFY THAT:
1. This survey and plan are correct and in accordance with the Surveyors Act and the Land Titles Act and the regulations made under them.
2. This survey was completed on the 7th day of March, 2022.

March 21, 2022
Date
E. H. Henebery
Ontario Land Surveyor

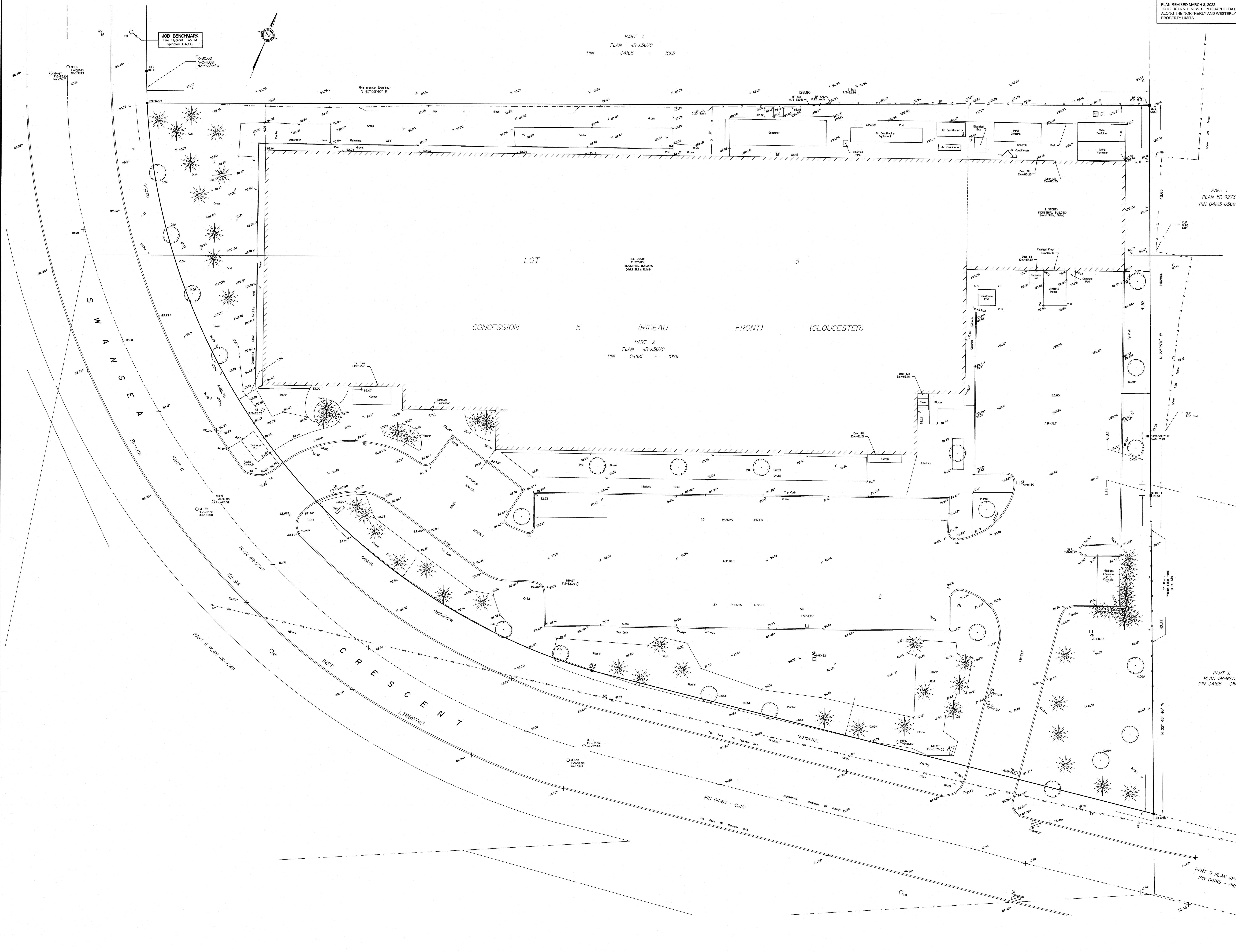
Notes & Legend

Symbol	Details
○	Survey Monument Planted
⊕	Survey Monument Found
SB	Standard Iron Bar
SSIB	Short Standard Iron Bar
(WIT)	Witness
(AOS)	Annis, O'Sullivan, Vollebek Ltd.
○ M-H-ST	Maintenance Hole (Storm Sewer)
○ M-H-S	Maintenance Hole (Sanitary)
○ LS	Light Standard
○ FH	Fire Hydrant
○ T/G	Top of Grate
○ GM	Gas Meter
○	Deciduous Tree
⊗	Coniferous Tree
⊕ 65.00	Location of Elevations
⊕ 65.00	Top of Curb Elevations
—	Property Line
DC	Depressed Curb
○ B	Bolted
⊕ W	Water Valve
C.L.	Centre-line
⊕ 65.00	New Elevations Obtained October 24, 2012

Bearings are grid bearings, derived from the northerly limit of Part 2 on Plan 4R-25670, shown to be N17°53'40"E thereon and are referred to the Central Meridian of Zone 18 of the Ontario Coordinate System, Longitude 76°30' West (MTM MAD-43).

ELEVATION NOTES
1. Elevations shown are referred to geoidic datum, derived from City of Ottawa benchmark C-140 having an elevation of 78.200 (CGVD25).
2. It is the responsibility of the user of this information to verify that the job benchmark has not been altered or disturbed and that its relative elevation and description agrees with the information shown on this drawing.

UTILITY NOTES
1. This drawing cannot be accepted as acknowledging all of the utilities and it will be the responsibility of the user to contact the respective utility authorities for confirmation.
2. Only visible surface utilities were located.
3. A field location of underground plant by the pertinent utility authority is mandatory before any work involving breaking ground, probing, excavating etc.



PART 2
PLAN SR-9273
PIN 04165 - 0568

ASSOCIATION OF ONTARIO
LAND SURVEYORS
PLAN SUBMISSION FORM
V-25361

THIS PLAN IS NOT VALID UNLESS
IT IS AN UNREPRODUCED ORIGINAL
COPY FILED BY THE SURVEYOR
IN ACCORDANCE WITH
REGULATION 1026, SECTION 29 (2).

© Annis, O'Sullivan, Vollebek Ltd. 2021. THIS PLAN IS PROTECTED BY COPYRIGHT.
ANNIS, O'SULLIVAN, VOLLEBEK LTD.
4 Colborne Galt, Suite 501
Windsor, Ont. N2E 7Z6
Phone: (519) 277-2800 Fax: (519) 277-1079
www.annis-osullivan.com
Ontario
Land Surveyors
Reg. No. 28672-24-113 C.E.P.T.