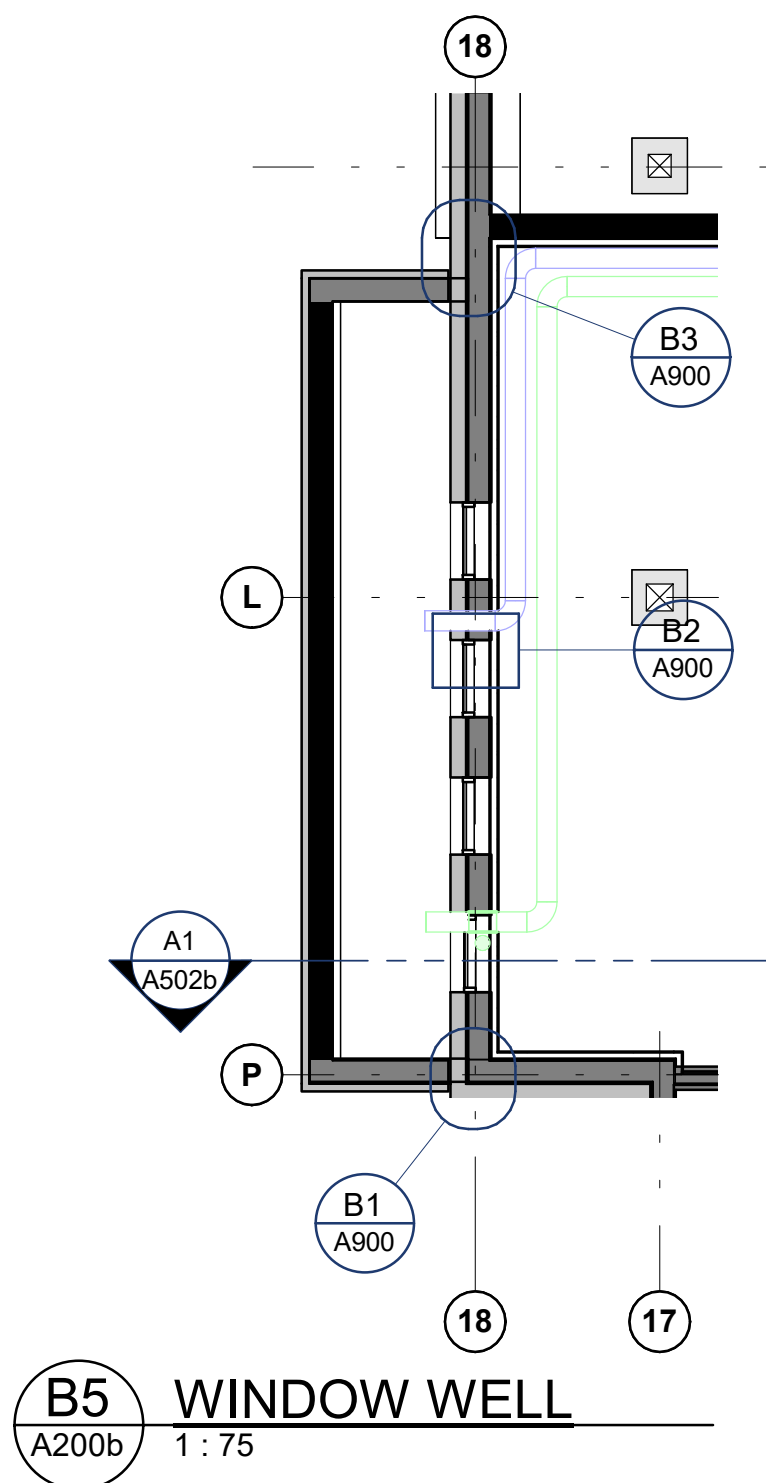
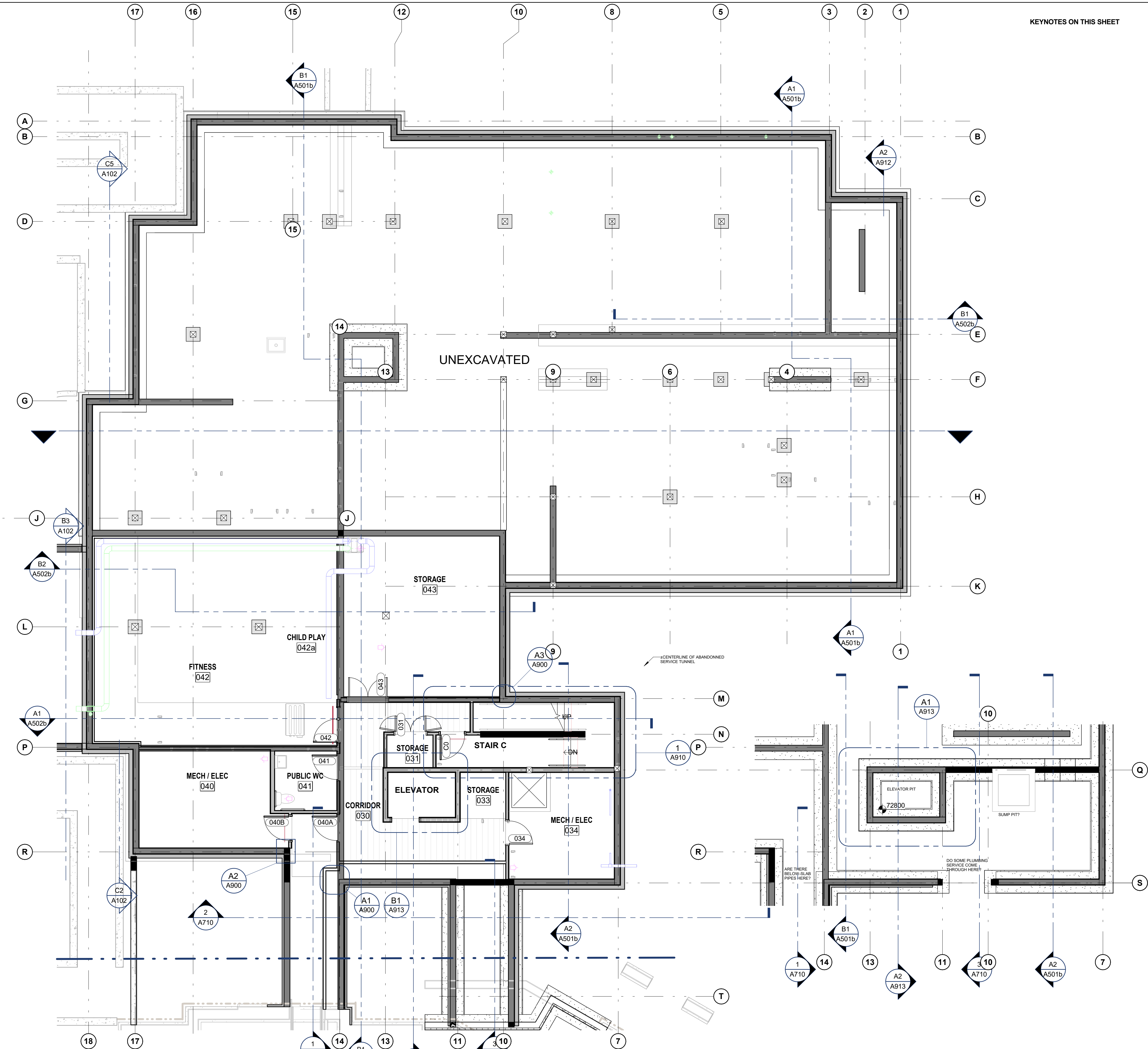
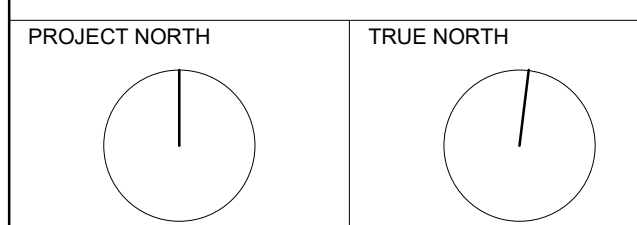


SEAL

NOT FOR CONSTRUCTION

GENERAL NOTES
DO NOT SCALE DRAWINGS.
CONTRACTOR TO VERIFY ALL DIMENSIONS & CONDITIONS
AND REPORT ANY DISCREPANCIES.



A4 FLOOR PLAN - BLDG B LEVEL 0
A200b 1:75

A1 FLOOR PLAN - LEVEL 0 LOWER
A200b 1:75

3	2022-12-16	SITE PLAN SUBMISSION
2	2022-11-25	ICHO SITE REVIEW
1	2022-10-21	DESIGN DEVELOPMENT
No.	DATE	DESCRIPTION

REVISIONS

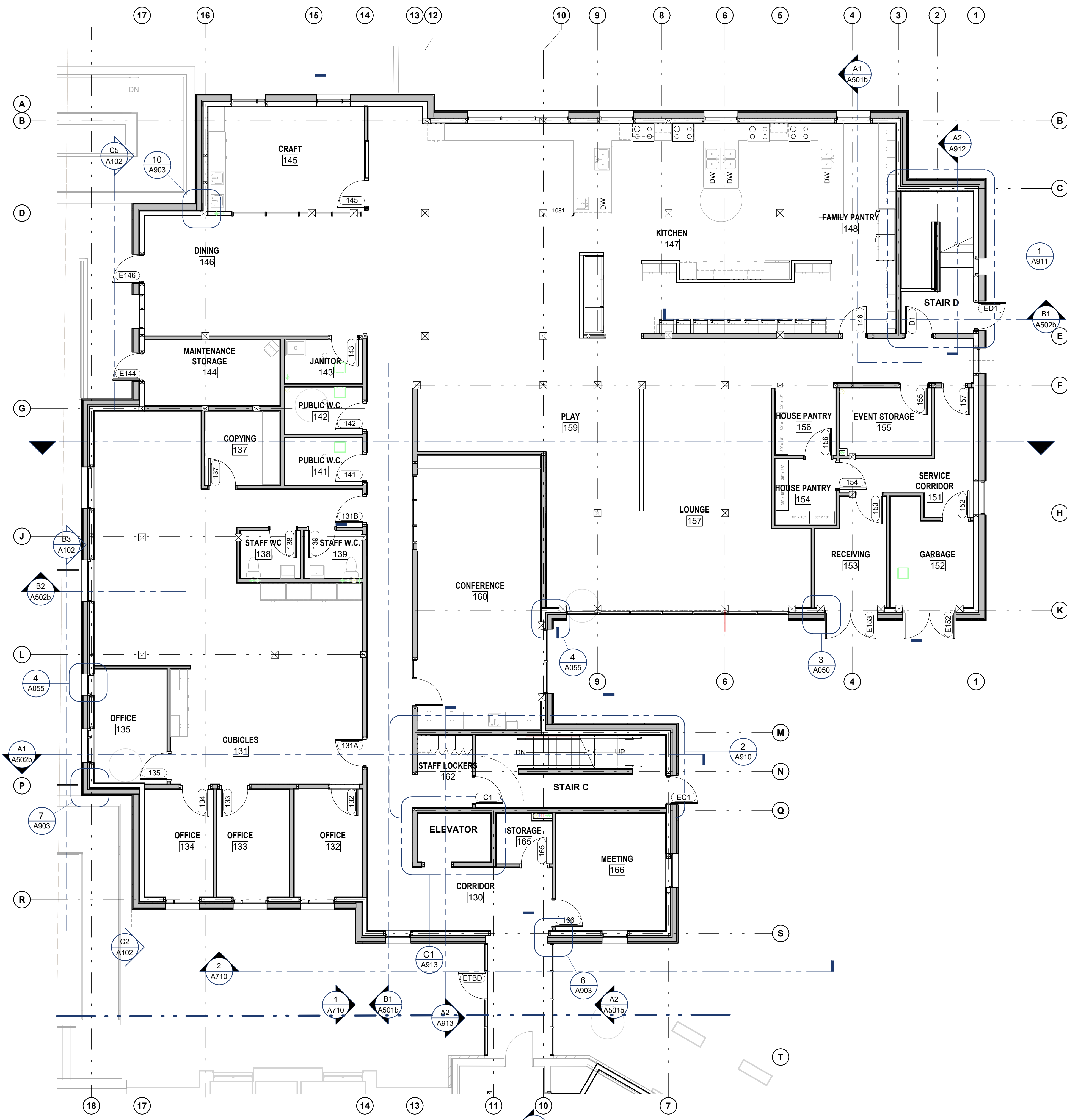
PROJECT
Ronald McDonald House Charities Ottawa (RMHCO)
Ronald McDonald House Expansion
INTERIORS
407 Smyth Road
Ottawa, ON K1H 8M8

IDEA #
19644

SHEET NAME
FLOOR PLAN - BLDG B LEVEL 0

DATE	2022-09-21	SCALE	AS NOTED.
CHECKED BY		DRAWN BY	

SHEET No.
A200b



A1 FLOOR PLAN - BLDG B LEVEL 1
A201b 1 : 75

GENERAL NOTES

1. RESERVED

KEYNOTES ON THIS SHEET

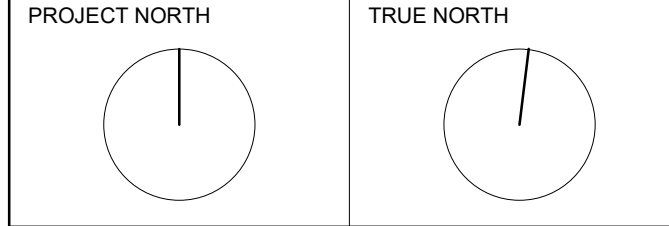


**INTEGRATED DESIGN
ENGINEERING + ARCHITECTURE**

595 BYRON AVE. OTTAWA, ONT. K1A 4C4
T 613.728.0008 E info@integrateddesign.ca

SEAL
NOT FOR CONSTRUCTION

GENERAL NOTES
DO NOT SCALE DRAWINGS.
CONTRACTOR TO VERIFY ALL DIMENSIONS & CONDITIONS
AND REPORT ANY DISCREPANCIES.



4	2022-12-16	SITE PLAN SUBMISSION
3	2022-11-25	CHEO SITE REVIEW
2	2022-10-21	DESIGN DEVELOPMENT
1	2022-09-26	SITE PLAN PRECONSULT

REVISIONS

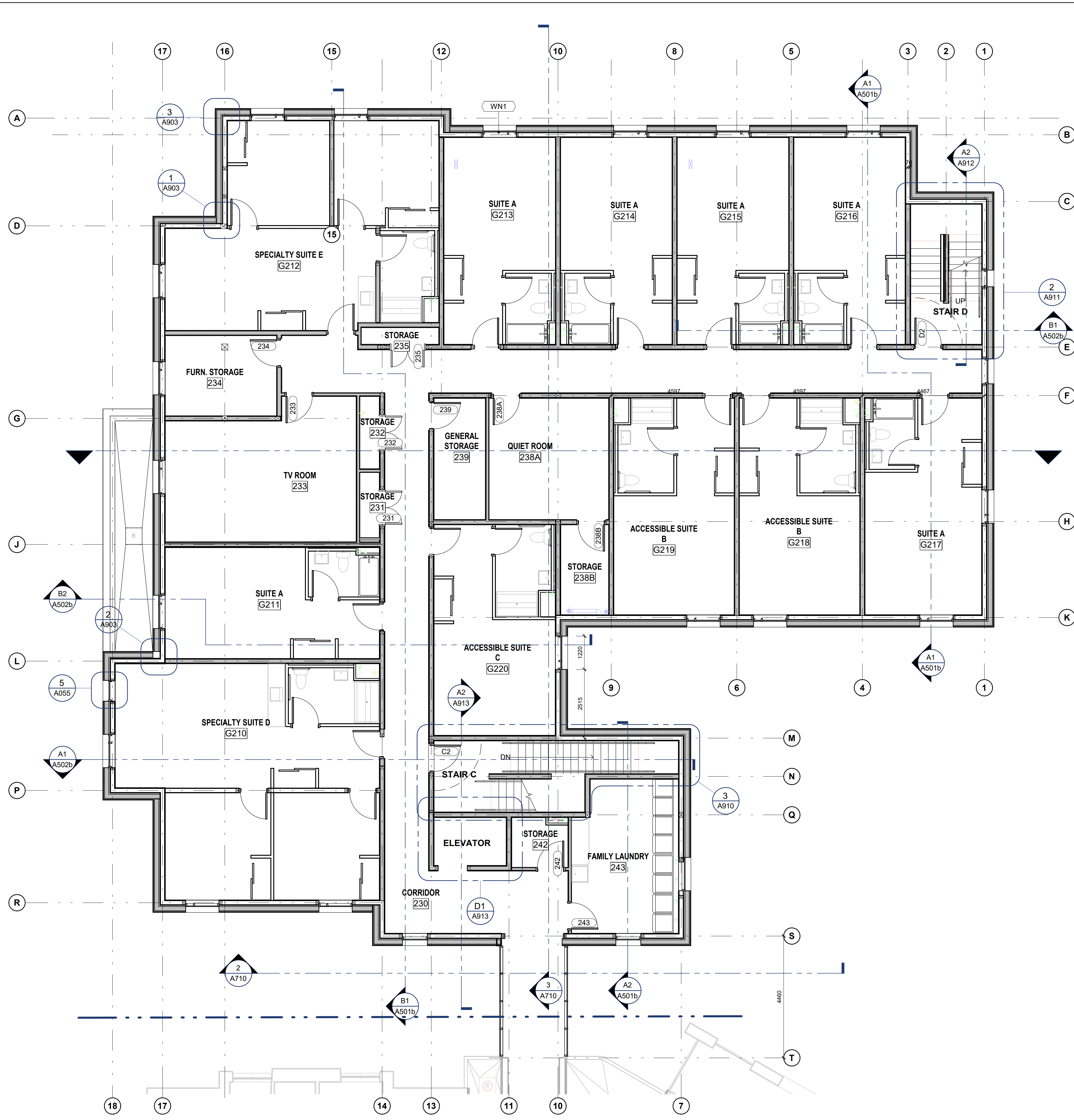
No.	DATE	DESCRIPTION
PROJECT		
Ronald McDonald House Charities Ottawa (RMHCO)		
Ronald McDonald House Expansion		
INTERIORS		
407 Smyth Road Ottawa, ON K1H 8M8		

IDEA # 19644 CLIENT #

SHEET NAME
FLOOR PLAN - BLDG B LEVEL 1

DATE 2022-09-21	SCALE AS NOTED.
CHECKED BY Checker	DRAWN BY Author
SHEET No.	

A201b



GENERAL NOTES

1. RESERVED

KEYNOTES ON THIS SHEET

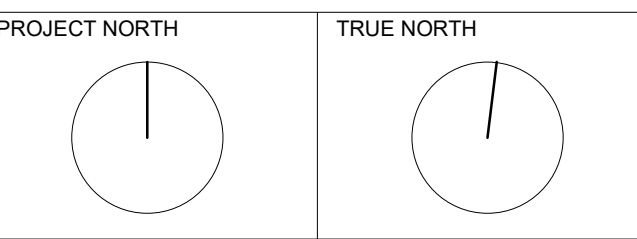


**INTEGRATED DESIGN
ENGINEERING + ARCHITECTURE**

595 BYRON AVE., OTTAWA, ONT. K1A 4C4
T 613.728.0008 E info@integrateddesign.ca

SEAL
NOT FOR CONSTRUCTION

GENERAL NOTES
DO NOT SCALE DRAWINGS.
CONTRACTOR TO VERIFY ALL DIMENSIONS & CONDITIONS
AND REPORT ANY DISCREPANCIES.



No.	DATE	DESCRIPTION
4	2022-12-16	SITE PLAN SUBMISSION
3	2022-11-25	CHEO SITE REVIEW
2	2022-10-21	DESIGN DEVELOPMENT
1	2022-09-26	SITE PLAN PRECONSULT

REVISIONS
PROJECT
**Ronald McDonald House
Charities Ottawa (RMHCO)
Ronald McDonald House
Expansion
INTERIORS
407 Smyth Road
Ottawa, ON K1H 8M8**

IDEA #
19644 CLIENT #

SHEET NAME
**FLOOR PLAN - BLDG B
LEVEL 2**

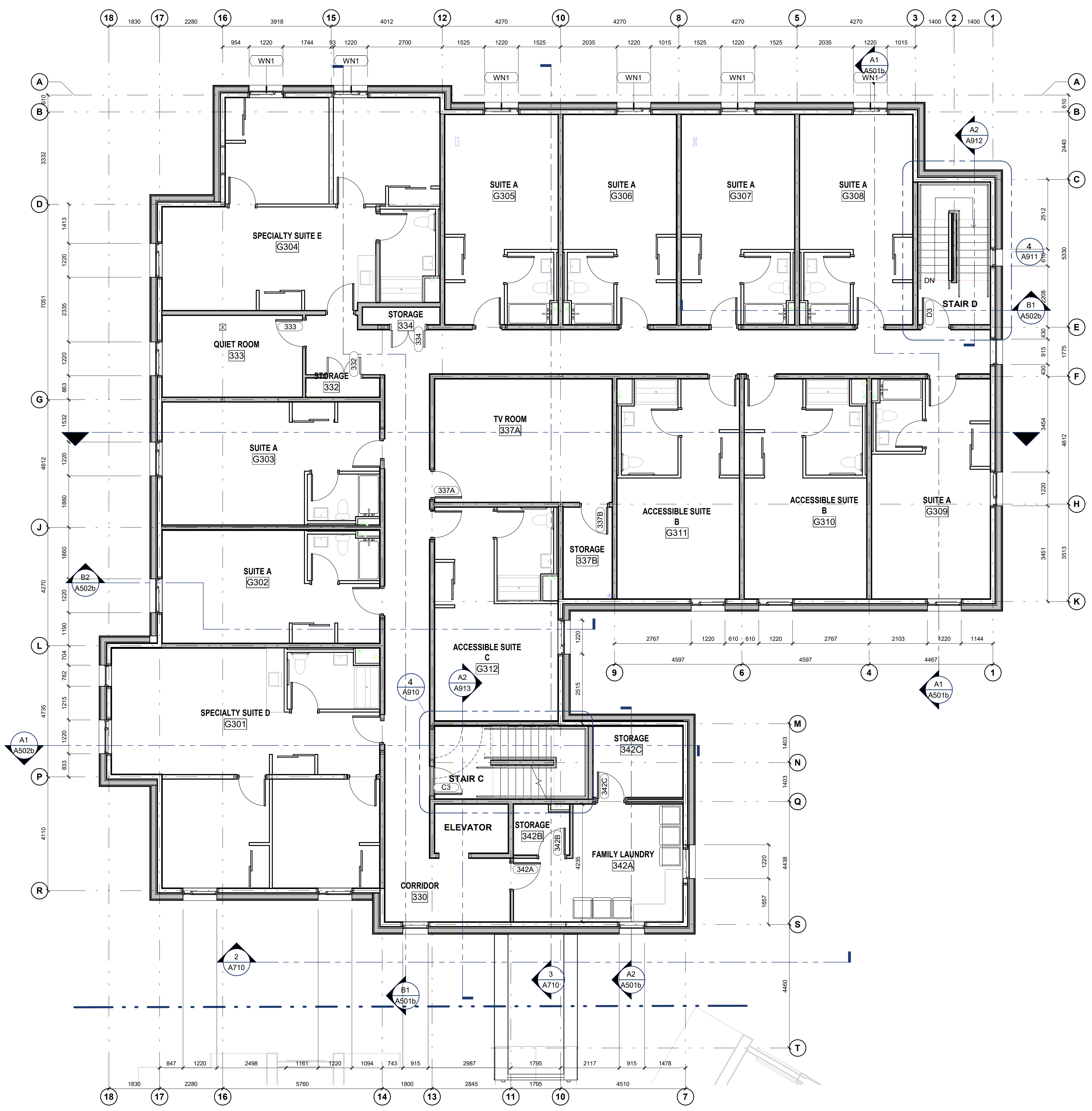
DATE 2022-09-21	SCALE AS NOTED.
CHECKED BY Checker	DRAWN BY Author
SHEET No.	

A202b

A1 FLOOR PLAN - BLDG B LEVEL 2
A202b 1 : 75

12/16/2022 2:48:42 PM

A1 (841x594)



A4 FLOOR PLAN - BLDG B LEVEL 3
A203b 1 : 75

GENERAL NOTES

- RESERVED

KEYNOTES ON THIS SHEET



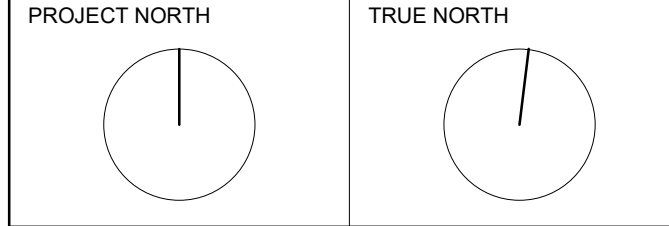
**INTEGRATED DESIGN
ENGINEERING + ARCHITECTURE**

595 BYRON AVE., OTTAWA, ONT. K1A 4C4
T 613.728.0008 E info@integrateddesign.ca

SEAL

NOT FOR CONSTRUCTION

GENERAL NOTES
DO NOT SCALE DRAWINGS.
CONTRACTOR TO VERIFY ALL DIMENSIONS & CONDITIONS
AND REPORT ANY DISCREPANCIES.



No.	DATE	DESCRIPTION
4	2022-12-16	SITE PLAN SUBMISSION
3	2022-11-25	CHEO SITE REVIEW
2	2022-10-21	DESIGN DEVELOPMENT
1	2022-09-26	SITE PLAN PRECONSULT

REVISIONS

PROJECT

**Ronald McDonald House
Charities Ottawa (RMHCO)**

**Ronald McDonald House
Expansion**

INTERIORS

**407 Smyth Road
Ottawa, ON K1H 8M8**

IDEA #
19644

CLIENT #

SHEET NAME

**FLOOR PLAN - BLDG B
LEVEL 3**

DATE 2022-09-21	SCALE AS NOTED.
CHECKED BY Checker	DRAWN BY Author
SHEET No.	

A203b