

TOPOGRAPHIC PLAN OF SURVEY OF  
**PART OF LOT 31**  
**CONCESSION 10**  
**GEOGRAPHIC TOWNSHIP OF GOULBOURN**  
**CITY OF OTTAWA**  
 Surveyed by Annis, O'Sullivan, Vollebek Ltd.

Scale 1:300

Distances shown on this plan are in metres and can be converted to feet by dividing by 0.3048

Surveyor's Certificate

- This survey and plan are correct and in accordance with the Survey Act and the Surveyors Act and the regulations made under them.
- The survey was completed on the 1st day of November, 2022.

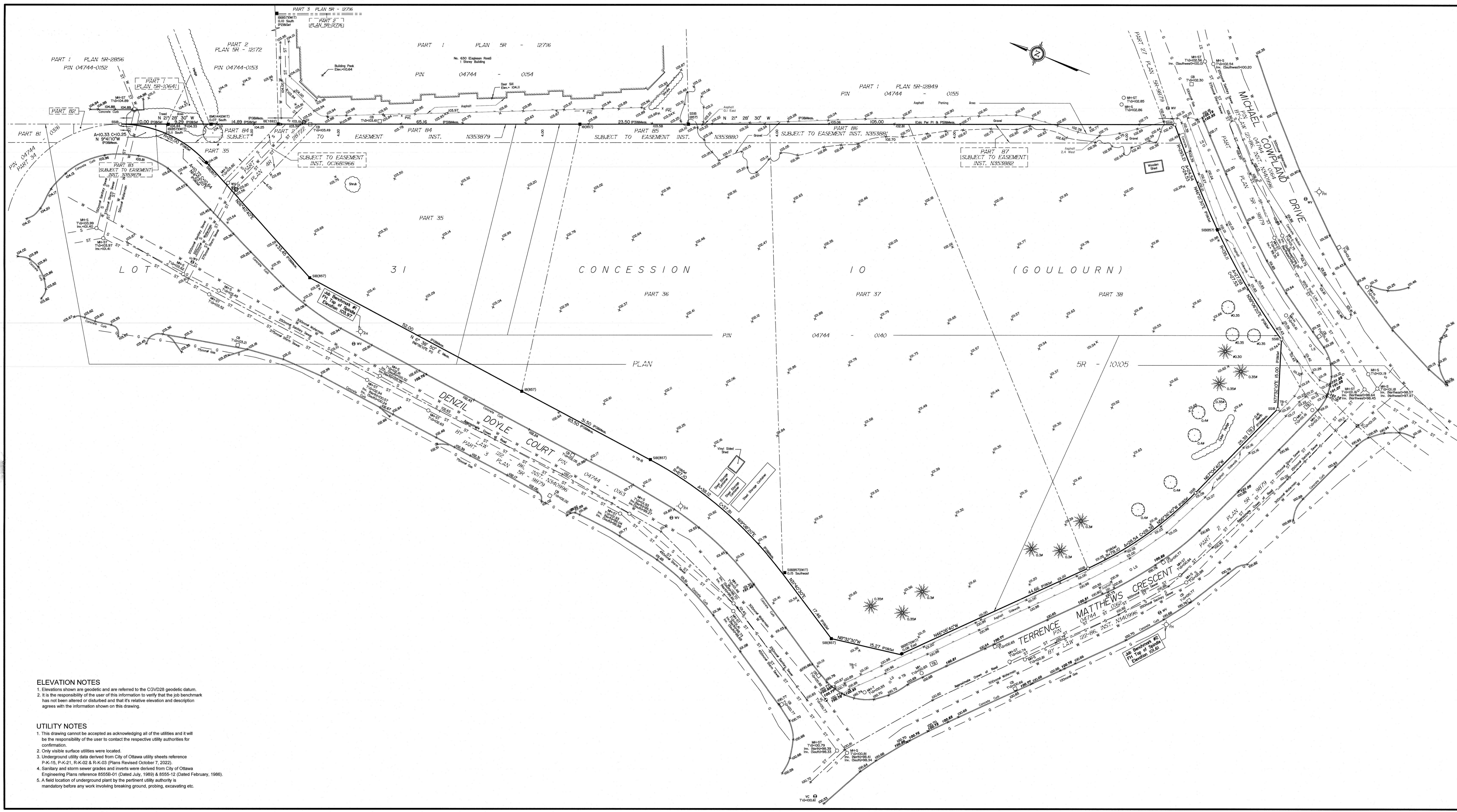
Nov 9 2022  
 Date

J. E. Anderson  
 Ontario Land Surveyor

Notes & Legend

| Denotes |                                  |
|---------|----------------------------------|
| —○—     | Survey Monument Planted          |
| —■—     | Survey Monument Found            |
| SIB     | Standard Iron Bar                |
| SSIB    | Short Standard Iron Bar          |
| IB      | Iron Bar                         |
| IRB     | Round Iron Bar                   |
| (WIT)   | Witness                          |
| Meas.   | Measured                         |
| (AOG)   | Annis, O'Sullivan, Vollebek Ltd. |
| (PI)    | Plan SR-10105                    |
| (P2)    | (1692) Plan March 3, 2016        |
| (P3)    | Plan SR-12716                    |
| (P4)    | Plan SR-12849                    |
| (P5)    | Plan SR-12172                    |
| ○       | Deciduous Tree                   |
| ★       | Coniferous Tree                  |
| ⊙       | Fire Hydrant                     |
| ⊕       | Water Valve                      |
| ⊙       | Water Stand Post                 |
| ⊙       | Maintenance Hole (Storm Sewer)   |
| ⊙       | Maintenance Hole (Sanitary)      |
| ⊙       | Maintenance Hole (Traffic)       |
| ⊙       | Maintenance Hole (Hydro)         |
| ⊙       | Maintenance Hole (Unidentified)  |
| ⊙       | Valve Chamber (Watermain)        |
| —ST—    | Underground Storm Sewer          |
| —S—     | Underground Sanitary Sewer       |
| —W—     | Underground Water                |
| —G—     | Underground Gas                  |
| —OW—    | Overhead Wires                   |
| □       | Catch Basin                      |
| ⊕       | Ditch Inlet                      |
| ⊕       | Bell Terminal Box                |
| ⊕       | Cable Terminal Box               |
| ⊕       | Unidentified Terminal Box        |
| ○       | Light Standard                   |
| ⊕       | Diameter                         |
| ⊕       | Location of Elevations           |
| ⊕       | Top of Concrete Curb Elevation   |

Bearings are grid, derived from Can-Net 2016 Real Time Network GPS observations, MTM Zone 5 (76°30' West Longitude) NAD-83 (original).  
 For bearing comparisons, a rotation of 0°00'57" counter-clockwise was applied to bearings on P1 & P2, a rotation of 0°04'20" counter-clockwise was applied to bearings on P3 & P4.



**ELEVATION NOTES**  
 1. Elevations shown are geodetic and are referred to the CGVD28 geodetic datum.  
 2. It is the responsibility of the user of this information to verify that the job benchmark has not been altered or disturbed and that its relative elevation and description agrees with the information shown on this drawing.

**UTILITY NOTES**  
 1. This drawing cannot be accepted as acknowledging all of the utilities and it will be the responsibility of the user to contact the respective utility authorities for confirmation.  
 2. Only visible surface utilities were located.  
 3. Underground utility data derived from City of Ottawa utility sheets reference P-K-15, P-K-21, R-K-02 & R-K-03 (Plans Revised October 7, 2022).  
 4. Sanitary and storm sewer grades and inverts were derived from City of Ottawa Engineering Plans reference 8558-01 (Dated July, 1989) & 8555-12 (Dated February, 1986).  
 5. A field location of underground plant by the pertinent utility authority is mandatory before any work involving breaking ground, probing, excavating etc.

ASSOCIATION OF ONTARIO  
 LAND SURVEYORS  
 PLAN SUBMISSION FORM  
**V-36367**

THIS PLAN IS NOT VALID UNLESS  
 IT IS AN UNDISBURSED ORIGINAL  
 COPY ISSUED BY THE SURVEYOR  
 In accordance with  
 Regulation 1102, Section 29 (3)