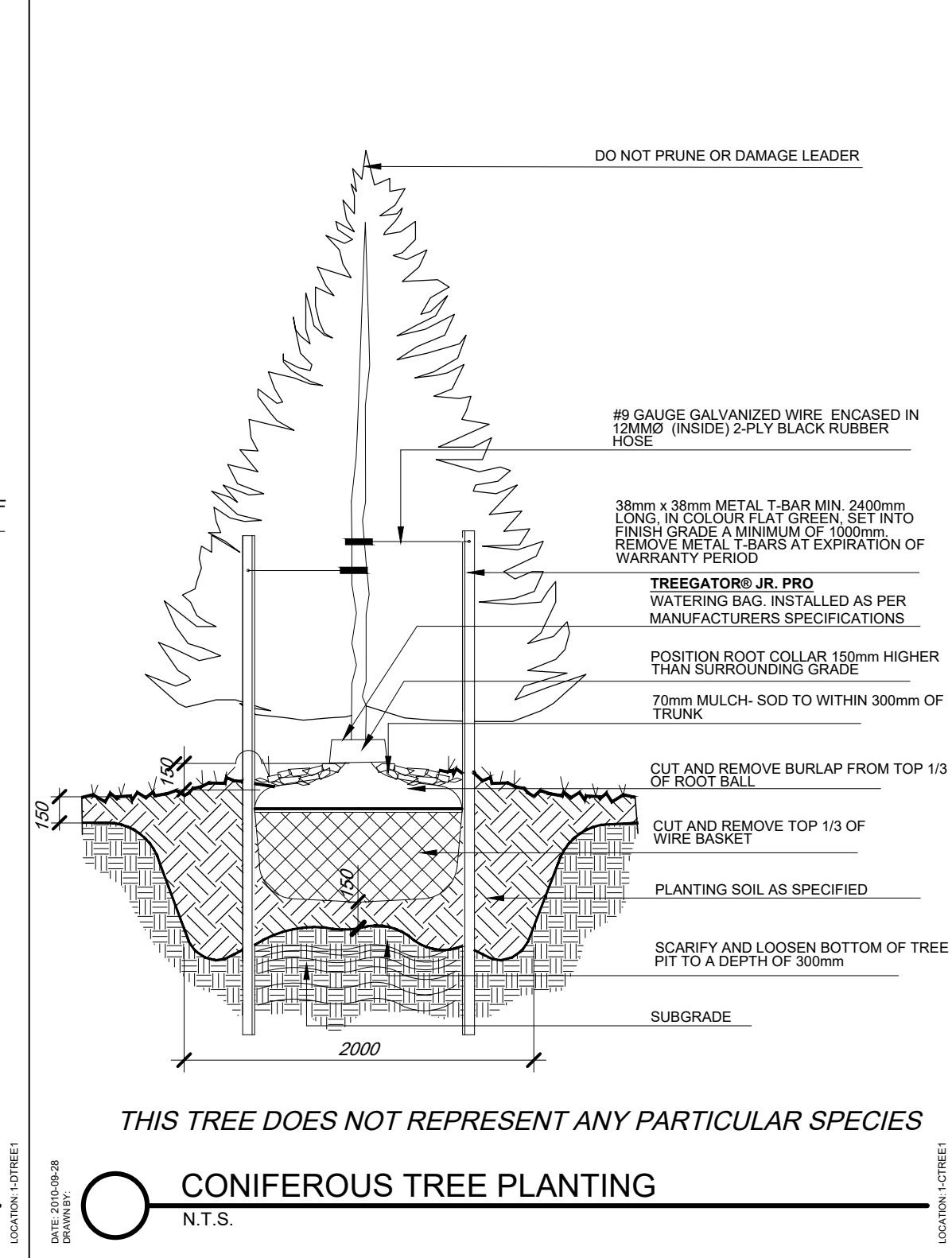
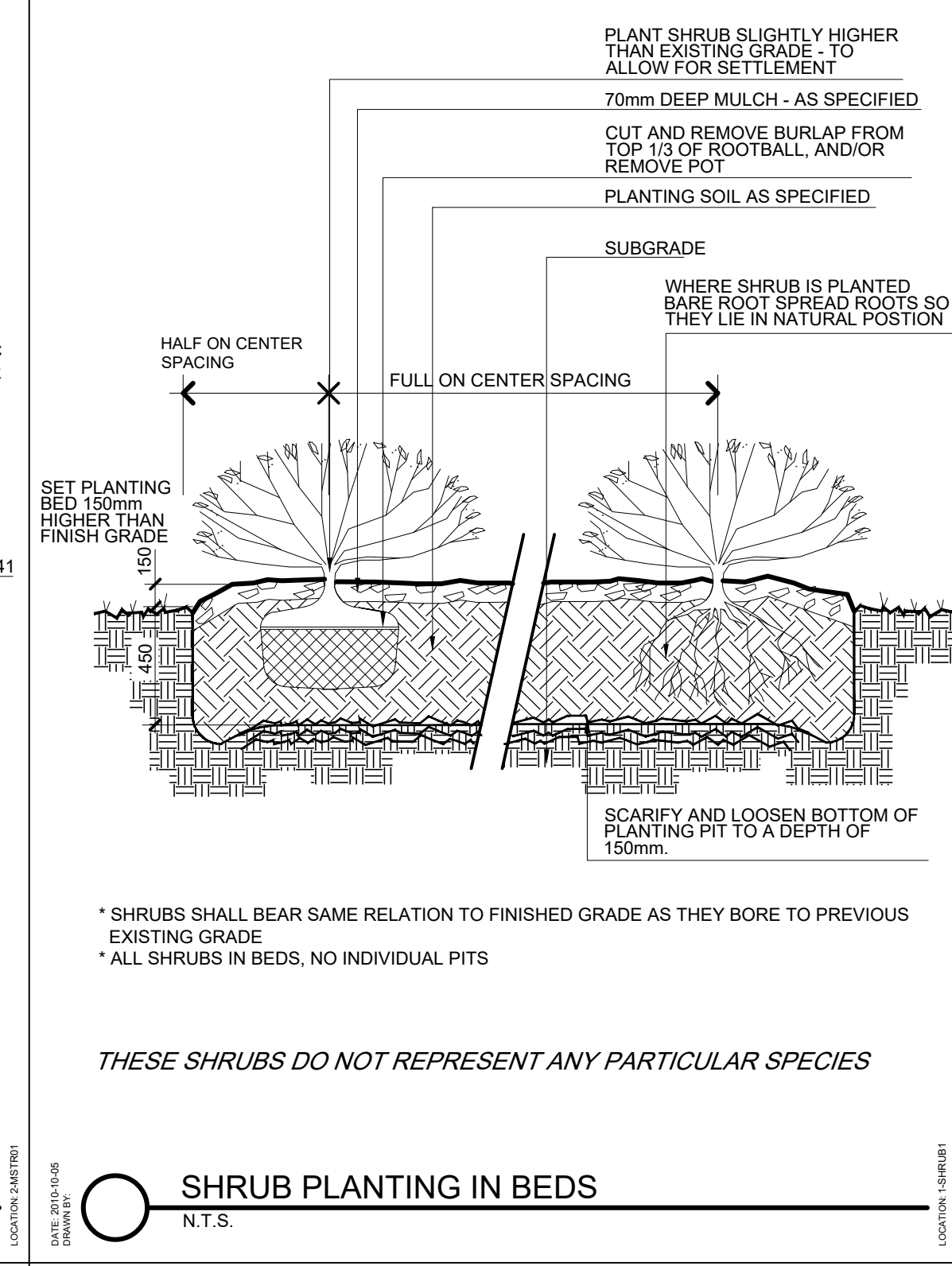
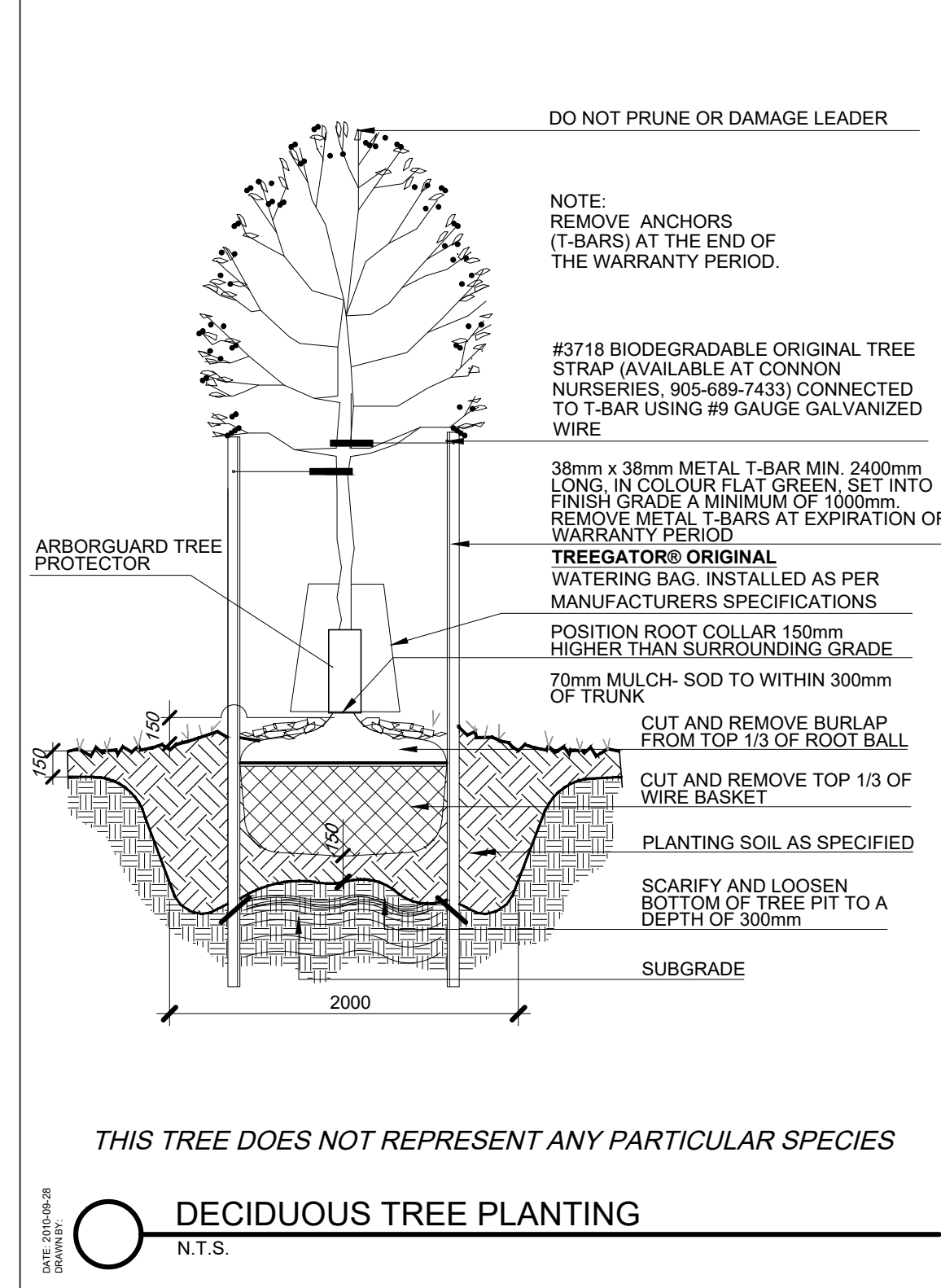
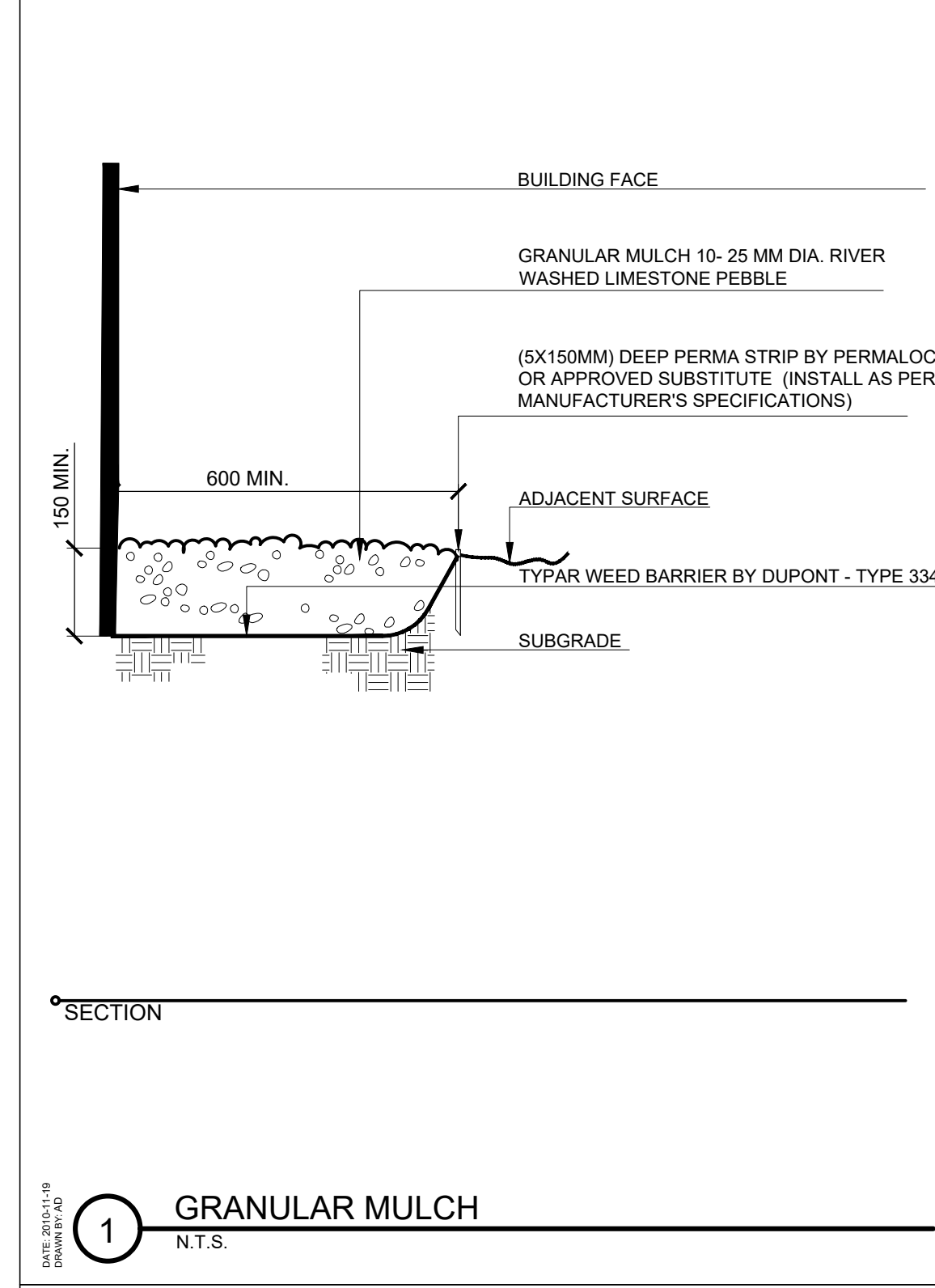


QTY	BOTANICAL NAME	COMMON NAME	SIZE	CONDITION	REMARKS
DECIDUOUS TREES					
7	Acer x freemanii 'Autumn Blaze'	Autumn Blaze Maple	70mm	W.B.	uniform, symmetrical
4	Quercus macrocarpa	Burr Oak	70mm	W.B.	uniform, symmetrical
5	Tilia americana 'Redmond'	Redmond Linden	50mm	W.B.	uniform, symmetrical
DECIDUOUS SHRUBS					
26	Spiraea japonica 'Crispa'	Crisp Leaf Spirea	50cm	3 gal.	1000mm on centre
9	Rhus aromatica 'Gro Low'	Dwarf Sumac	40cm	3 gal.	1900mm on centre
14	Syringa meyeri 'Palibin'	Dwarf Korean Lilac	50cm	3 gal.	1400mm on centre
EVERGREEN SHRUBS					
26	Juniperus sabina 'Arcadia'	Arcadia Juniper	50cm	3 gal.	1200mm on centre
6	Thuja occidentalis 'Nigra'	Black Cedar	175cm	W.B.	2500mm on centre
PERENNIALS AND GRASSES					
7	Calamagrostis acutiflora 'Karl Foerster'	Karl Foerster Feather Reed Grass	80cm	2 gal.	700mm on centre

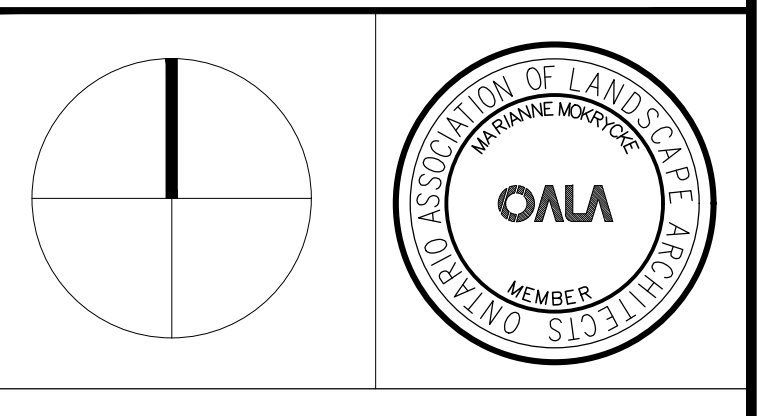


- KEY-PLAN**
- LEGEND**
- EXISTING PROPERTY LINE
 - PROPOSED DECIDUOUS TREE
 - PROPOSED CONIFEROUS TREE
 - PROPOSED DECIDUOUS SHRUB
 - PROPOSED CONIFEROUS SHRUB
 - PROPOSED SOD
 - PROPOSED GRANULAR PAVING

SOURCE OF BASE INFORMATION:
 BASE INFORMATION EXTRACTED FROM DRAWING 20037_SPA_ARCHITECTURAL_SITE_PLAN PROVIDED BY REINDERS + LAW LTD. ARCHITECTURE, ENGINEERING

PLOT DATE: December 06, 2022

No.	DATE	DESCRIPTION	BY
1	12/06/2022	ISSUED FOR SITE PLAN APPROVAL	PL
1	02/25/2022	ISSUED FOR SITE PLAN APPROVAL	KW



OMC LANDSCAPE ARCHITECTURE
 Innovative. outside thinking.
 270 Sherman Avenue North, Suite 315-MILL, Hamilton, ON L8L 6M4
 Telephone: 905.681.7604 Fax: 905.681.2944 www.omc.ca
 LANDSCAPE ARCHITECTURE ENVIRONMENTAL PLANNING RESOURCE ANALYSIS

CHORAC OTTAWA
 2375 ST. LAURENT BLVD
 OTTAWA, ONTARIO

PLANTING PLAN

ISSUED FOR SITE PLAN APPROVAL

SCALE: 1:250 CHECKED: MM
 DATE: May, 21, 09 DRAWING: L1
 DRAWN: LM PROJECT: 1553

Date: Dec. 06, 2022 - 10:38 am Printed by: spino Unit Saved By: spino File Name: T:\0 - PROJECTS\1553 - 20037_CHORAC OTTAWA REINDERS+LAW - Working Drawings\1-PLANTING PLAN.dwg