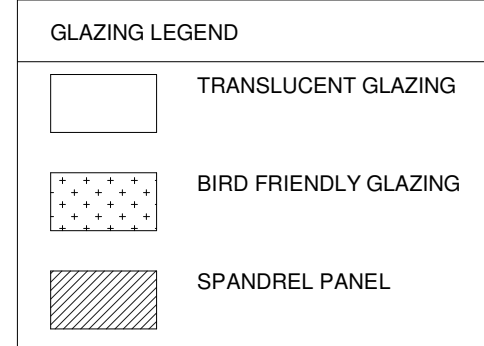
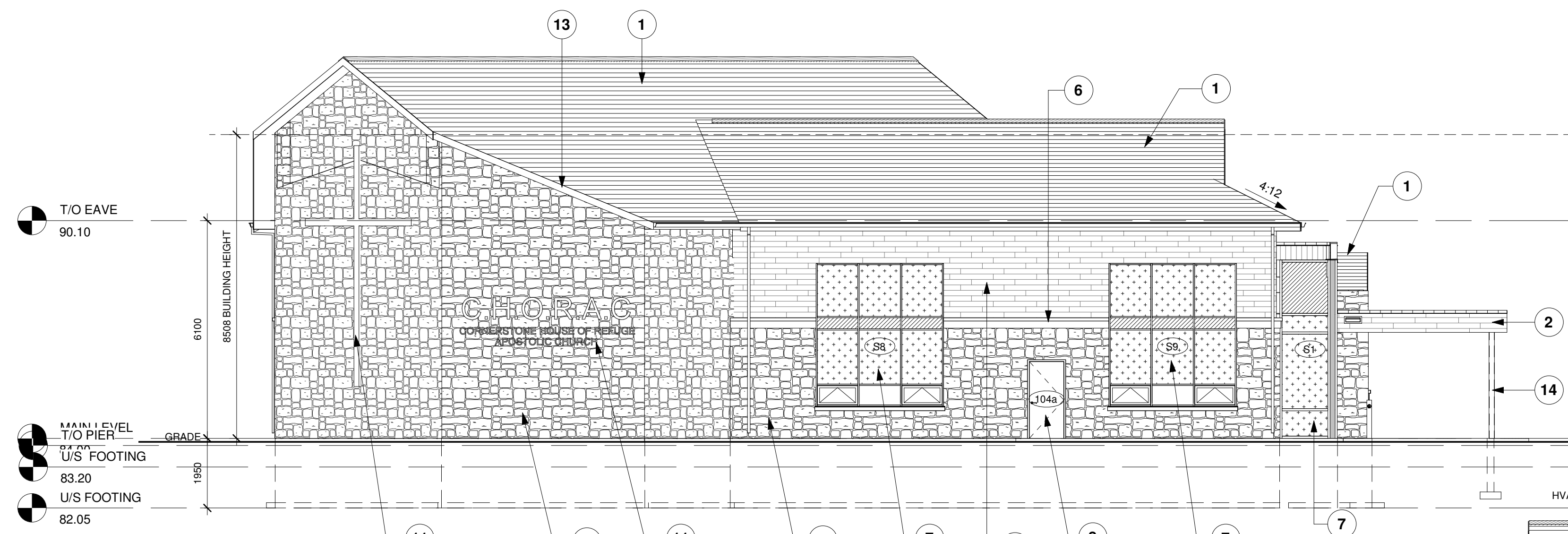
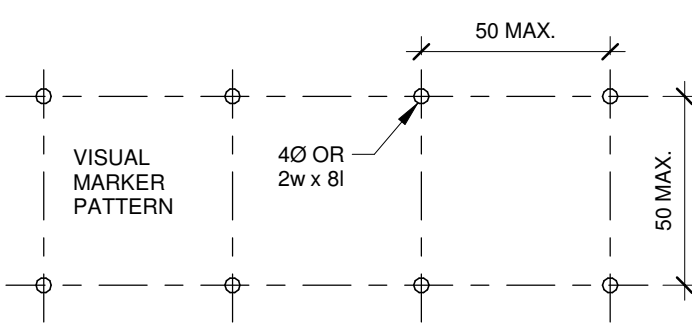


**BIRD-SAFE GLAZING**  
 OTTAWA BIRD-SAFE DESIGN GUIDELINES RECOMMENDS  
 90% OF GLASS WITHIN THE FIRST 16m OF HEIGHT TO BE  
 BIRD-SAFE.  
 PROJECT GLASS AREA = 135.08m<sup>2</sup>  
 PROJECT BIRD-SAFE GLASS = 120.55m<sup>2</sup> = 89%

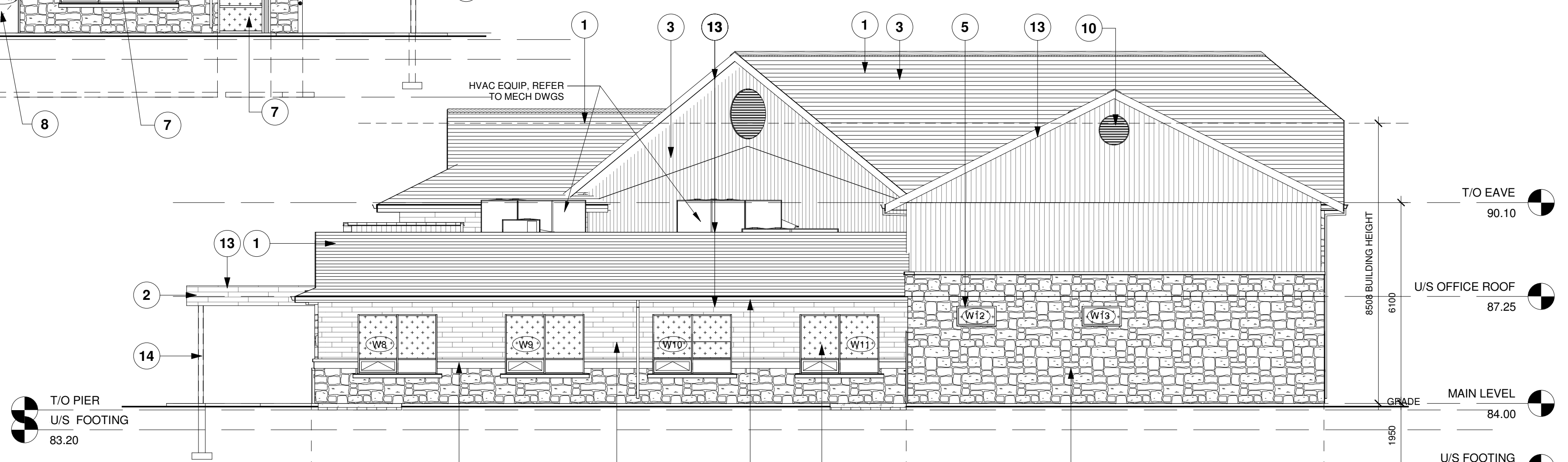


**MATERIAL LEGEND**

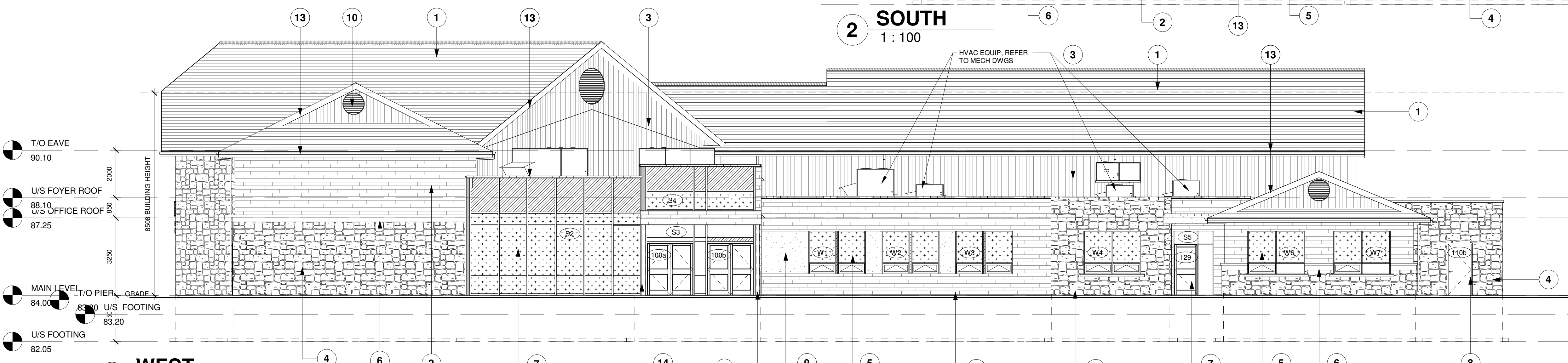
VALUE	MATERIAL DESCRIPTION
1	ASPHALT SHINGLES - TIMBERLINE HD CHARCOAL
2	SIDING - PREFINISHED ALUMINUM PANEL - WOOD GRAIN (WALNUT)
3	SIDING - HARDIE PANEL VERT. SIDING SELECT CEDAR MILL BOARD & BATTEN AND TRIM - MONTEREY TAUPE
4	STONE MASONRY VENEER - PERMACON LAFIT STONE - RANGE NEWPORT GREY
5	CLEAR ANODIZED ALUMINUM WINDOWS CW CLEAR FLOAT DOUBLE GLAZING.
6	PRECAST ARCHITECTURAL STONE TRIM
7	ENTRANCE WINDOWS - WHITE PREFINISHED THERMAL BROKEN ALUMINUM STOREFRONT SYSTEM W/ DOUBLE-GLAZED INSULATED CLEAR GLASS
8	DOORS - HOLLOW METAL INSULATED DOOR & FRAME WHITE
9	STUCCO - CHARCOAL, COLOUR TO MATCH FACIA
10	LOUVERS - FYPON DECORATIVE ROUND LOUVER CHARCOAL
11	SIGNAGE - PREFINISHED ALUMINUM CHARCOAL
12	POURED CONCRETE FOOTINGS & FOUNDATIONS.
13	FASCIA, GUTTER, DOWNSPOUTS & SCOFFIT - PREFINISHED ALUMINUM CHARCOAL
14	PAINTED STEEL COLUMN.



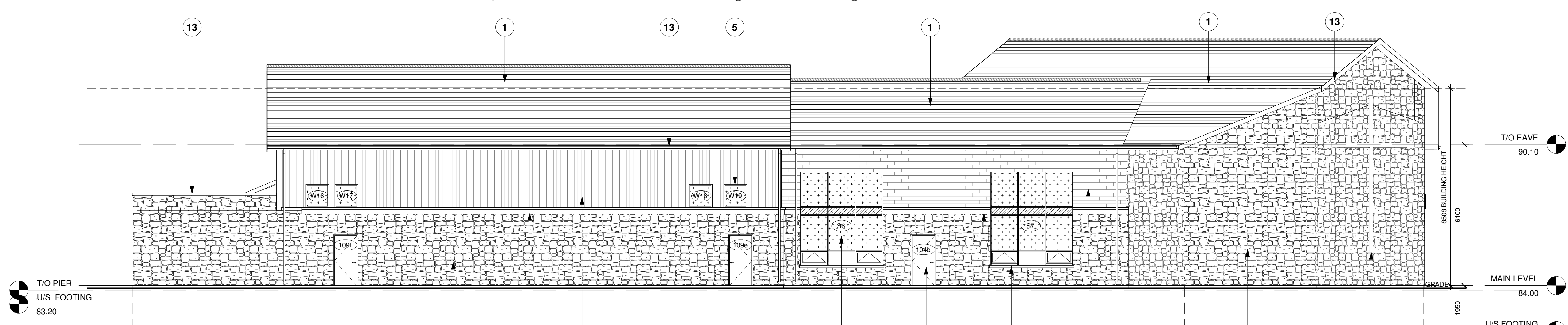
**1 NORTH**  
1 : 100



**2 SOUTH**  
1 : 100



**3 WEST**  
1 : 100



**4 EAST**  
1 : 100

no.	revisions	date	init.
1	RE-ISSUED FOR SPA	2022-12-09	KR
0	ISSUED FOR SPA	2022-02-28	KR

**GENERAL NOTE:**  
 THESE DRAWINGS ARE COPYRIGHT AND THE PROPERTY OF REINDERS + LAW LTD. THE DRAWINGS MAY NOT BE USED FOR CONSTRUCTION WITHOUT THE PERMISSION OF REINDERS + LAW LTD. AND UNLESS SEALED AND SIGNED BY THE ARCHITECT/ENGINEER REPRODUCTION OF THESE DRAWINGS WITHOUT THE CONSENT OF REINDERS + LAW IS STRICTLY PROHIBITED.  
 DO NOT SCALE THESE DRAWINGS. ANY ERROR OR DISCREPANCY IS TO BE REPORTED IMMEDIATELY TO: REINDERS + LAW LTD.

date plotted : 09/25/17 plot scale : 1:1

drawn : LC  
 designed : GDR  
 reviewed : KR  
 date : 09/25/17  
 scale : As indicated

project :  
 C.H.O.R.A.C.  
 2375 St. Laurent Blvd, Ottawa ON

drawing : BUILDING ELEVATIONS

**REINDERS + LAW**  
 ARCHITECTURE . ENGINEERING

**REINDERS + LAW LTD.**  
 Architects, Consulting Engineers & Project Managers  
 64 ONTARIO STREET NDRTH  
 MILTON, ON, L9T 2T1  
 T. 905.457.1618 F. 905.457.8852  
 WWW.REINDERS.CA

drawing no. : 20037\_A200 rev. no. : 1