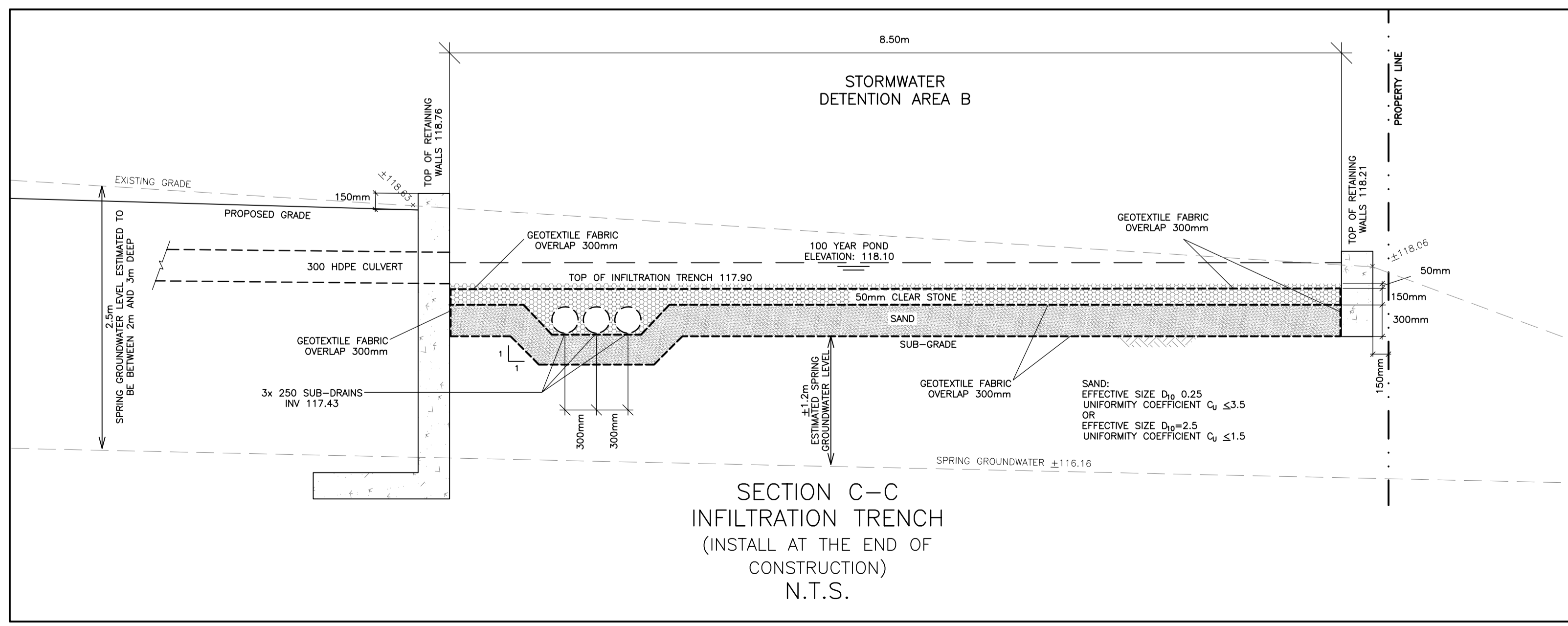
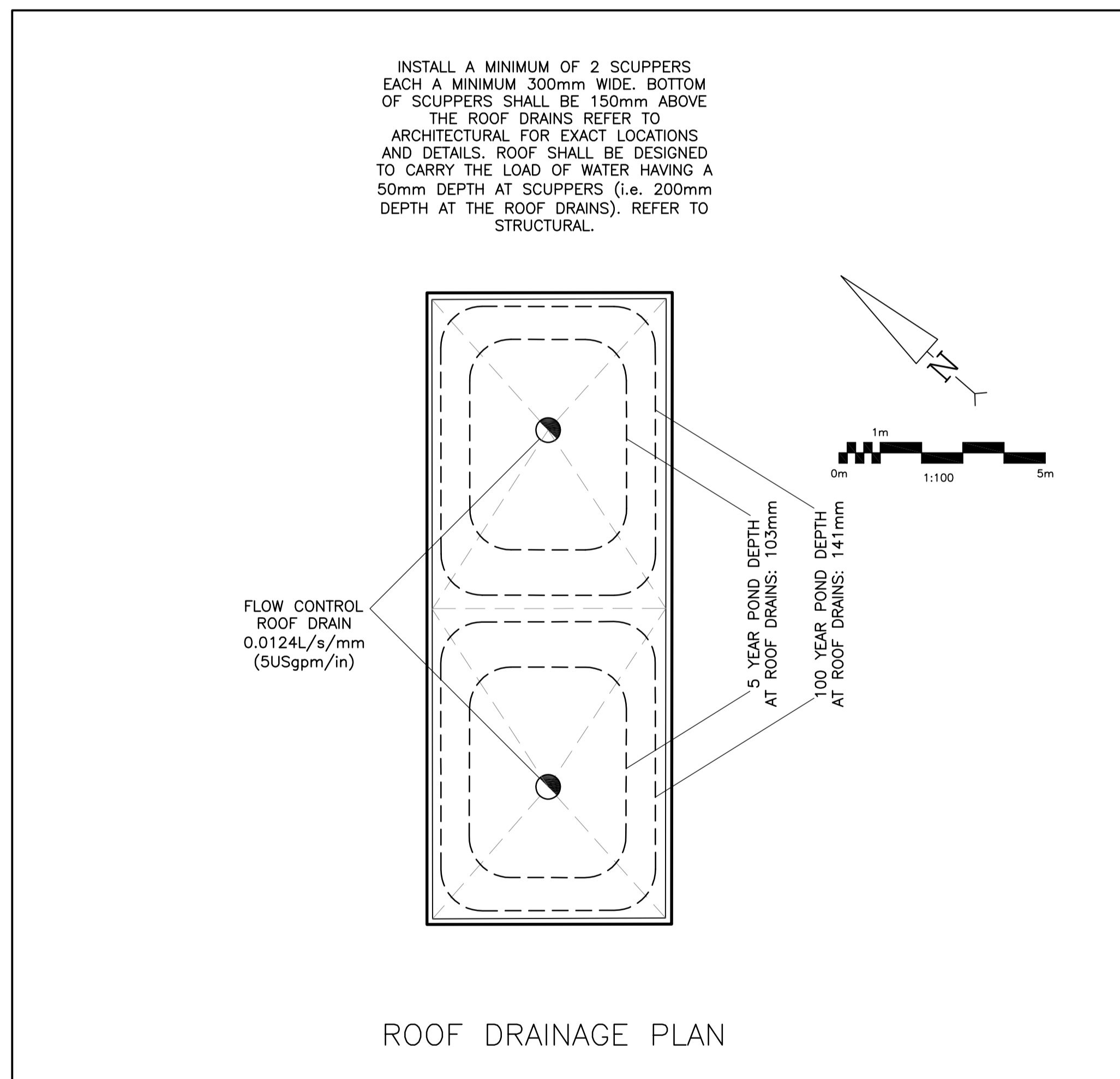
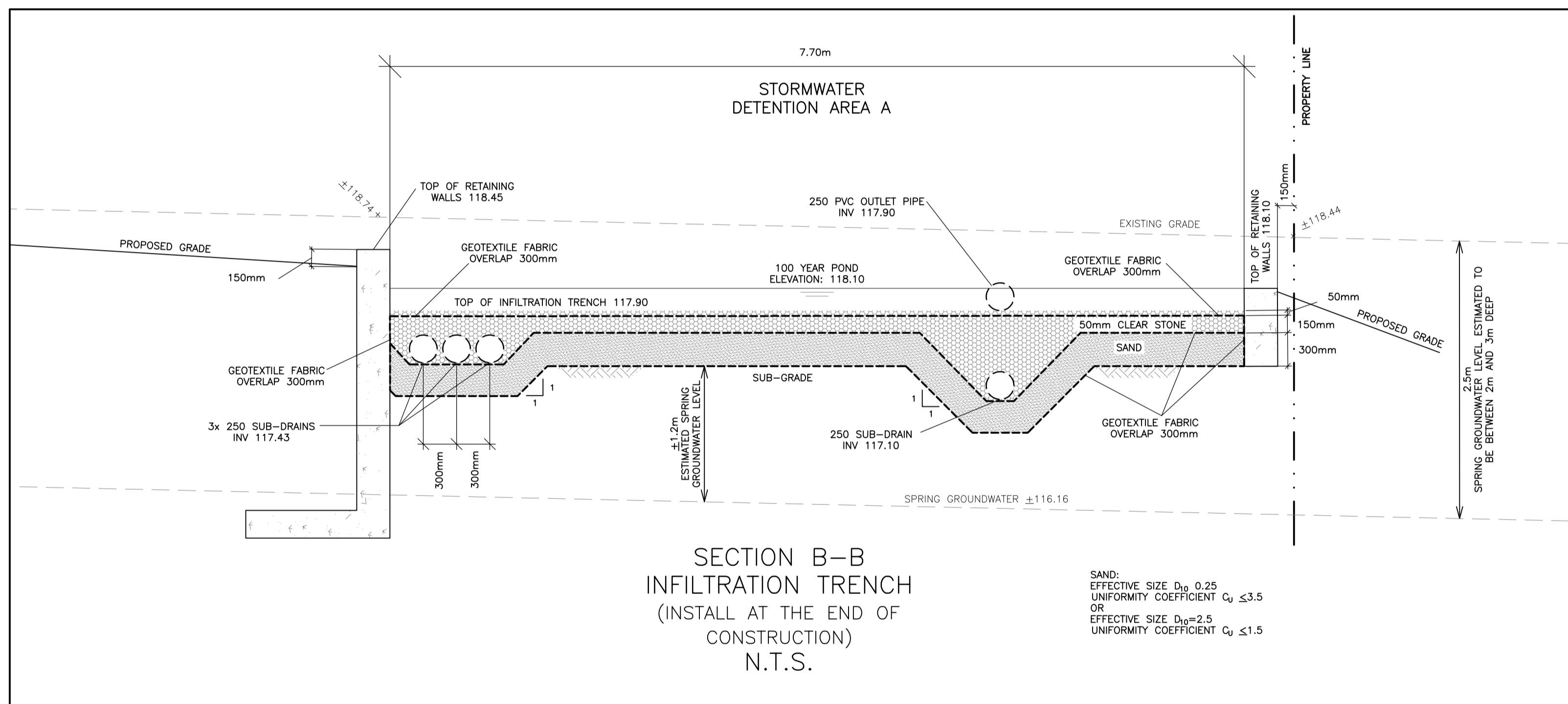


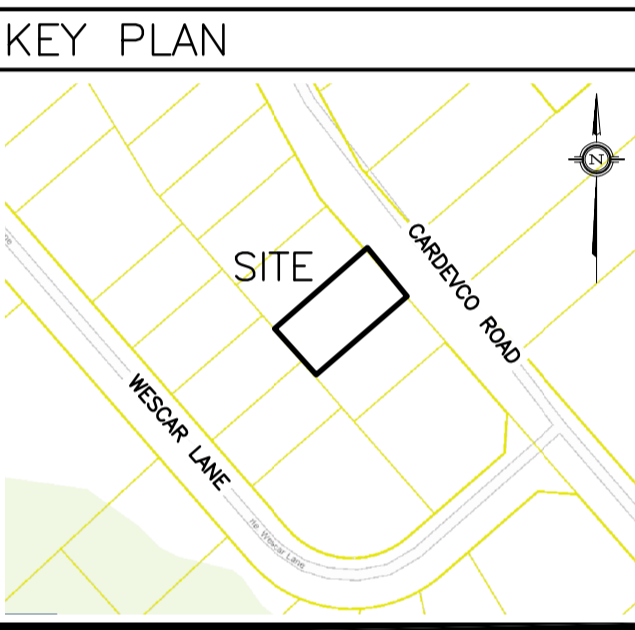
**LEGEND**

- FFL FINISHED FLOOR ELEVATION
- TOF TOP OF FOUNDATION
- USF UNDERSIDE OF FOOTING
- PROPERTY LINE
- CB [ ] CATCH-BASIN
- MH (O) STORM MANHOLE
- ST --- STORM SEWER
- INV INVERT OF PIPE
- +99.99 EXISTING GRADE ELEVATION
- +99.99 PROPOSED GRADE ELEVATION
- 2% EXISTING SLOPE OF GRADE
- 2% PROPOSED SLOPE OF GRADE
- ⇨ EMERGENCY OVERLAND FLOW
- T.O.S. TOP OF SLOPE
- B.O.S. BOTTOM OF SLOPE
- CENTERLINE OF SWALE
- ..... SILT FENCE BARRIER
- ROOF DRAIN
- ▨ LIGHT-DUTY PAVEMENT
- ▩ HEAVY-DUTY PAVEMENT
- ▨ LANDSCAPE



**CATCH-BASIN & MANHOLE SCHEDULE**

REF	TOP	SIZE	TYPE	INVERT AT INLET	INVERT AT OUTLET	NOTES
<b>STORM SEWER</b>						
CB-1	117.95	600mm x 600mm	PRECAST CONCRETE CATCH-BASIN	-	117.10 (SUB-DRAIN)	TO OPSD 705.010 & CITY OF OTTAWA STANDARDS - FRAME & COVER TO CITY OF OTTAWA DRAWING No. S19
MH-2	118.75	CDS PMSU2015-4	PRECAST CONCRETE MANHOLE	117.81(SE)	117.81(NE)	TO OPSD 701.010 & CITY OF OTTAWA STANDARDS EXCEPT WITH A DEEP SUMP AS REQUIRED BY CDS



No.	DATE	REVISION
3	NOV 24-22	ISSUED FOR APPROVAL
2	NOV 15-22	ISSUED FOR COORDINATION
1	SEP 12-22	PRELIMINARY

**D. B. GRAY ENGINEERING INC.**  
 Stormwater Management - Grading & Drainage - Storm & Sanitary Sewers - Watermain  
 700 Long Point Circle 613-425-8044  
 Ottawa, Ontario d.gray@dbgrayengineering.com

Project  
**PROPOSED ADDITION**  
**135 CARDEVCO ROAD**  
 OTTAWA, ONTARIO

Drawing Title  
**DETAILS**

Engineer's Seal  
  
 NOT VALID UNLESS SIGNED & DATED

Drawn D.B.G.  
 H. Scale 1:100  
 V. Scale  
 Date SEP 12-22  
 Job No. 21081

Drawing No.  
**C-3**  
 of 4