



600-158 Sterling Road
Toronto, ON M6R 2B7

T +1 416 596 8300
ZEIDLER.COM



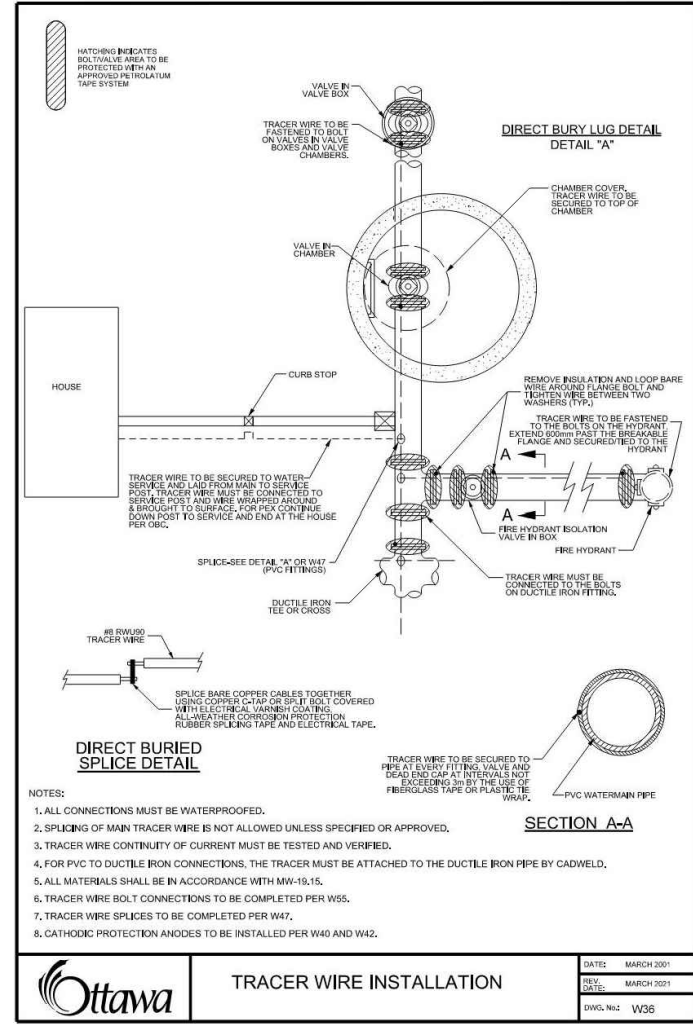
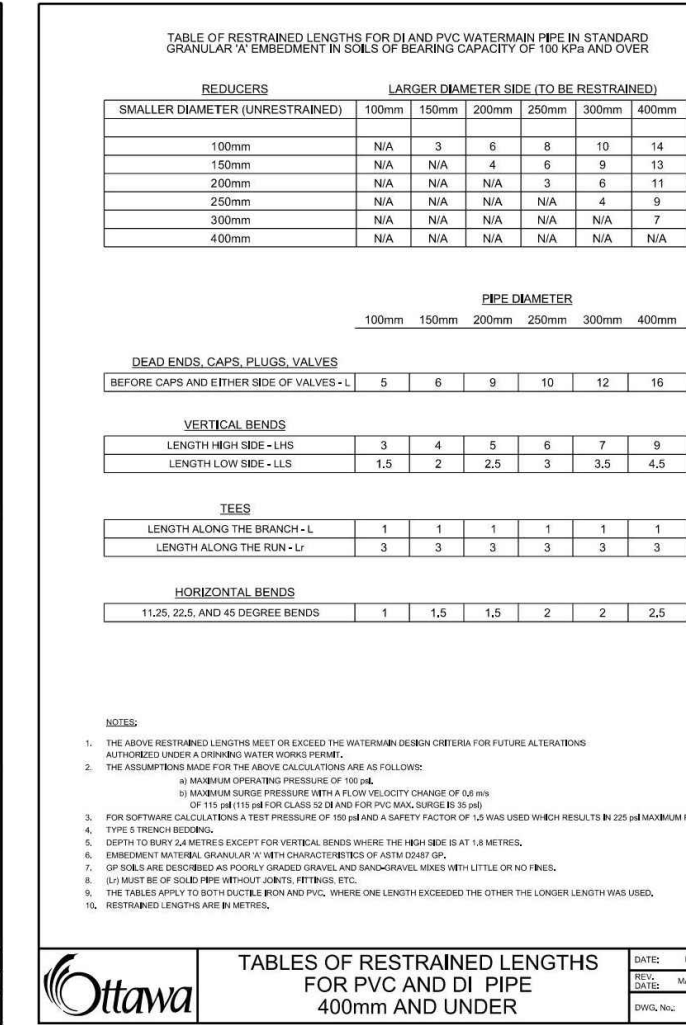
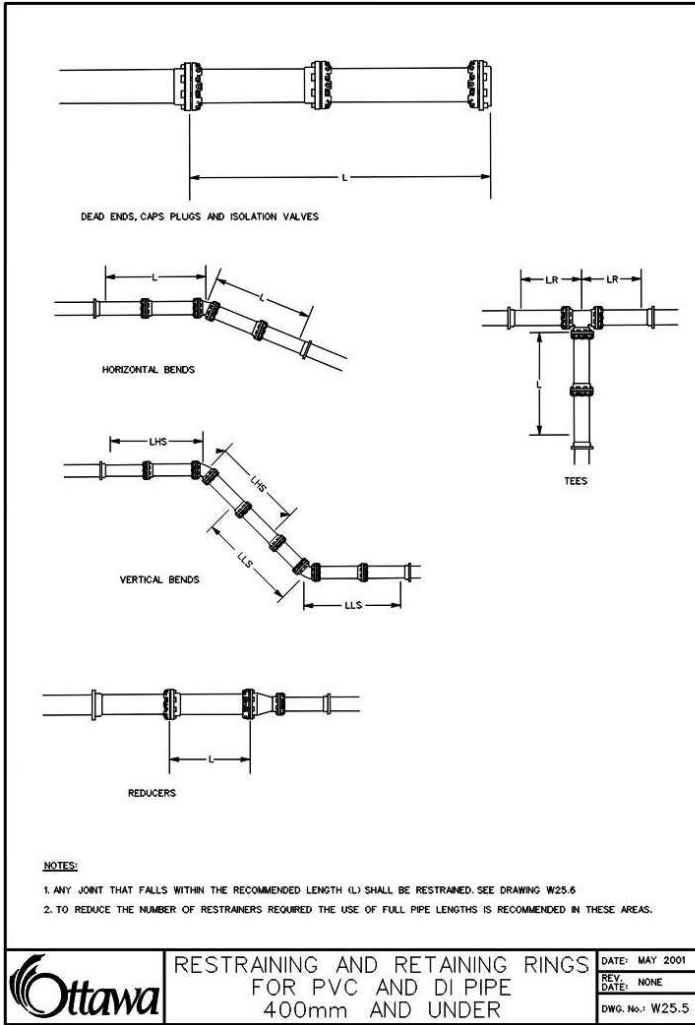
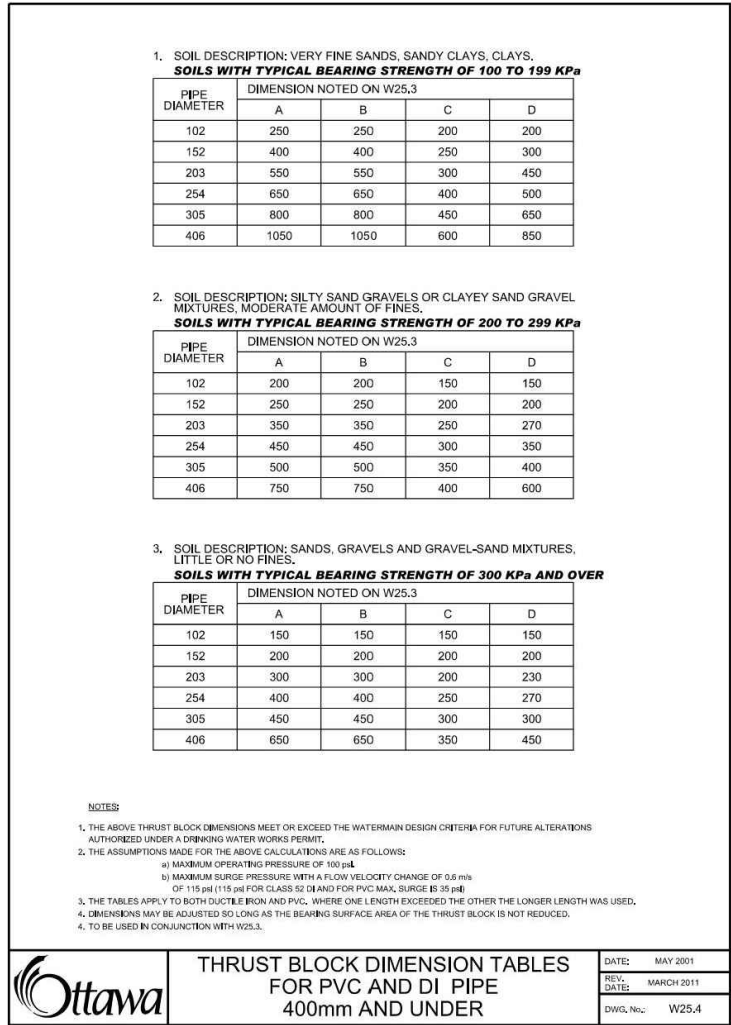
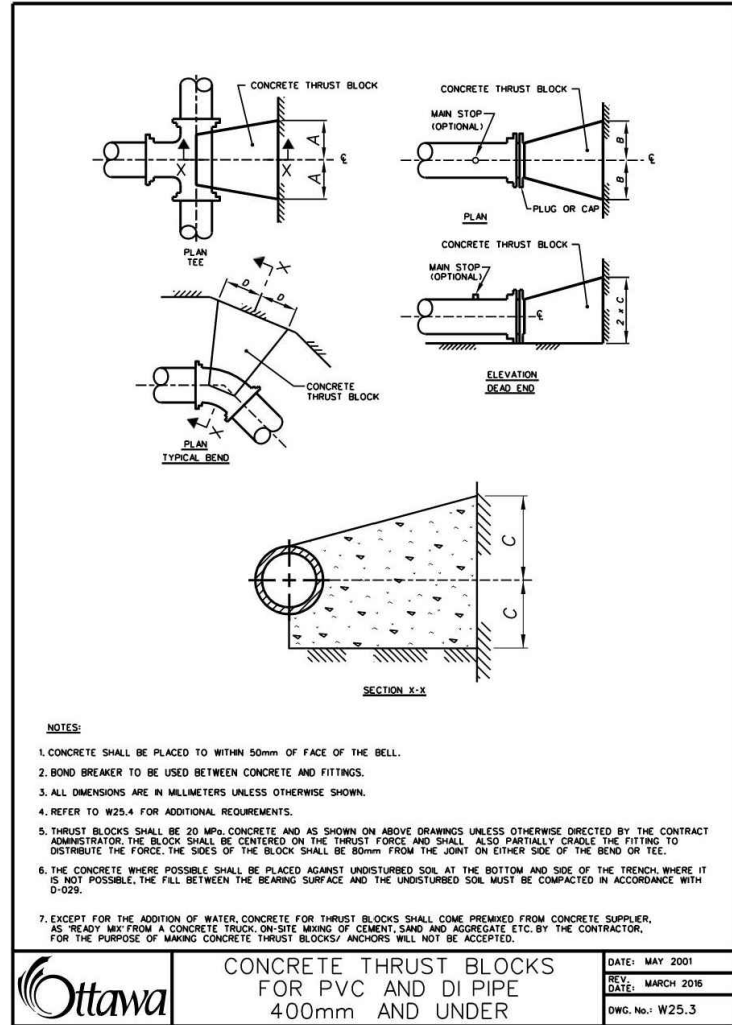
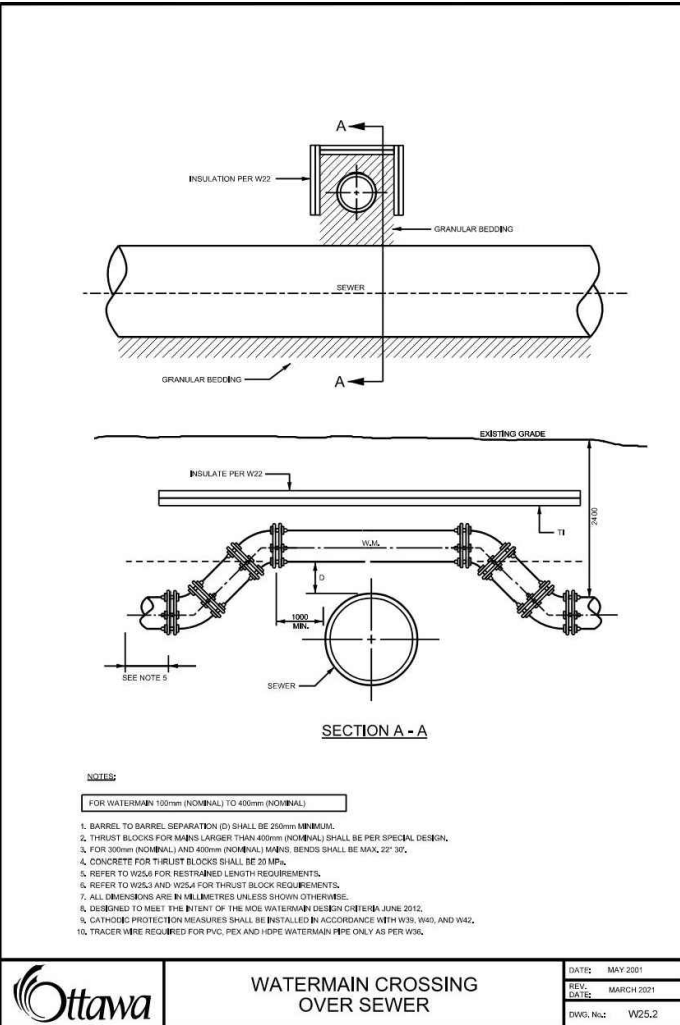
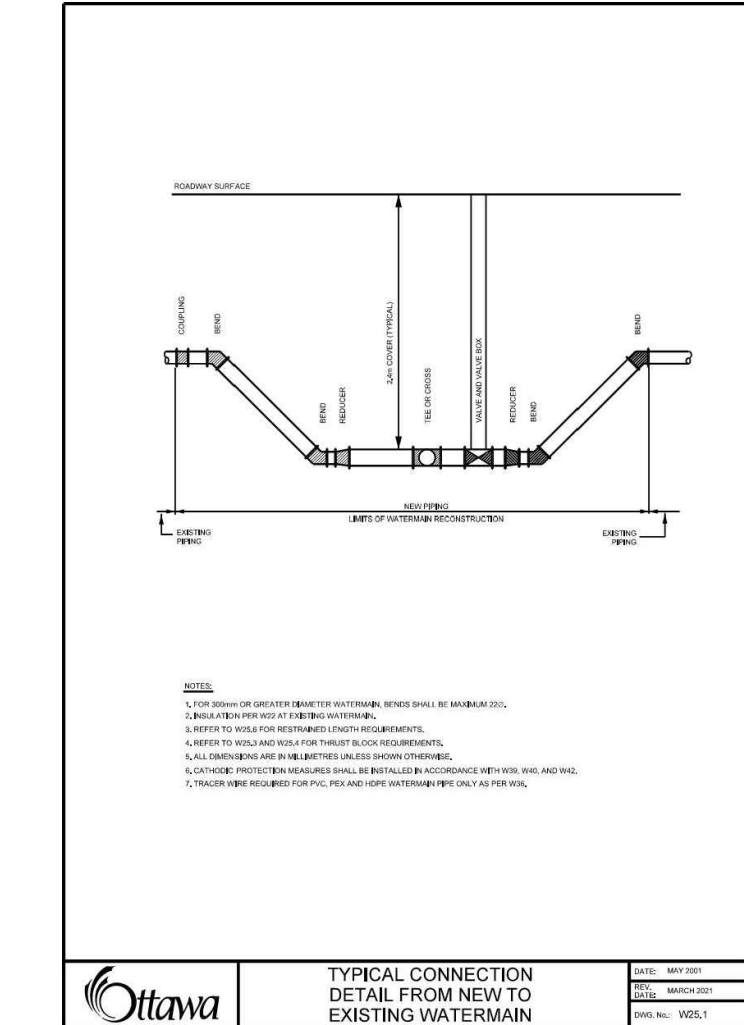
406-47 Clarence Street
Ottawa, ON K1N 9K1

T +1 613 234 2274
NEUFARCHITECTES.COM



Cadillac
Fairview




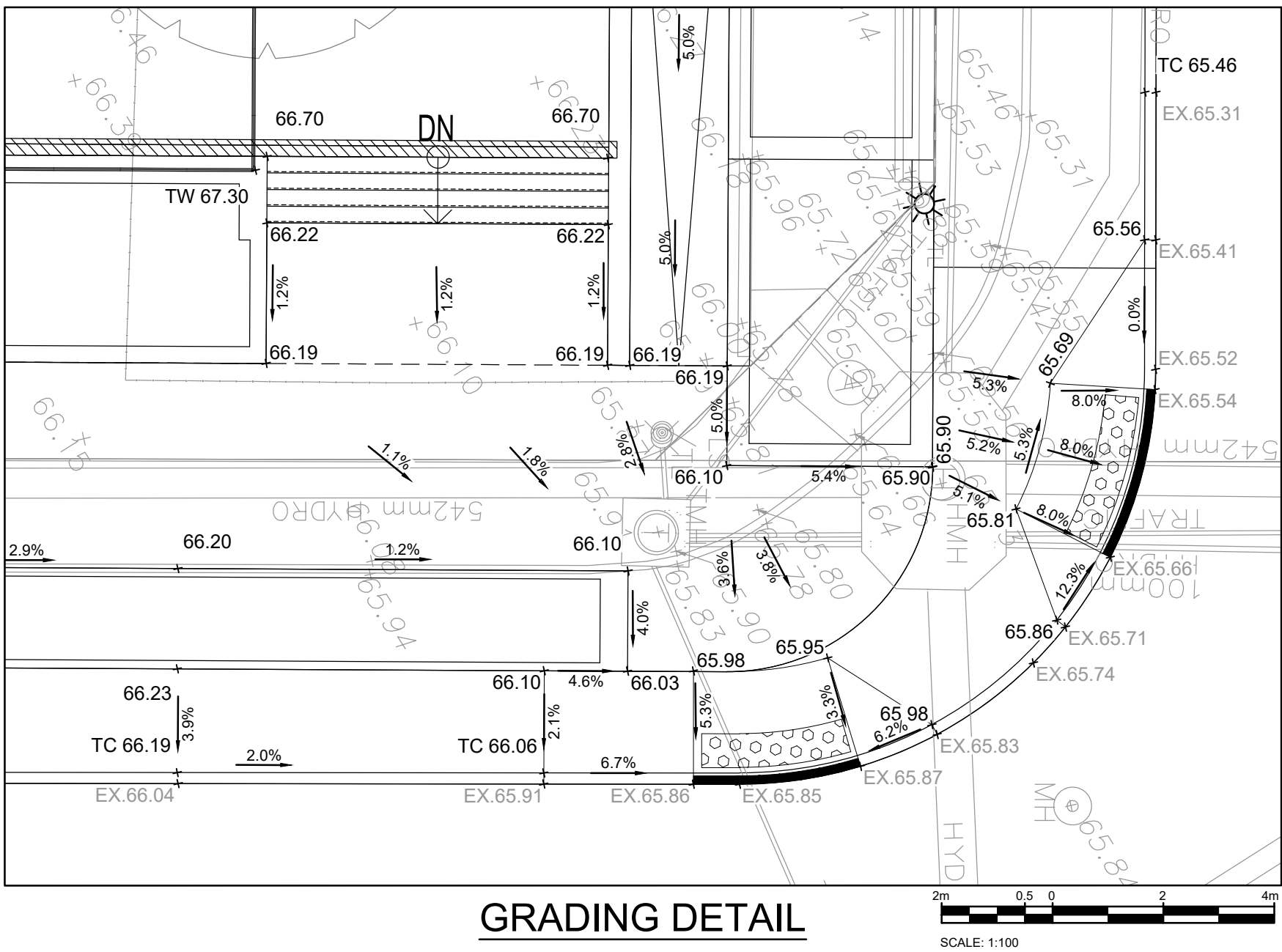
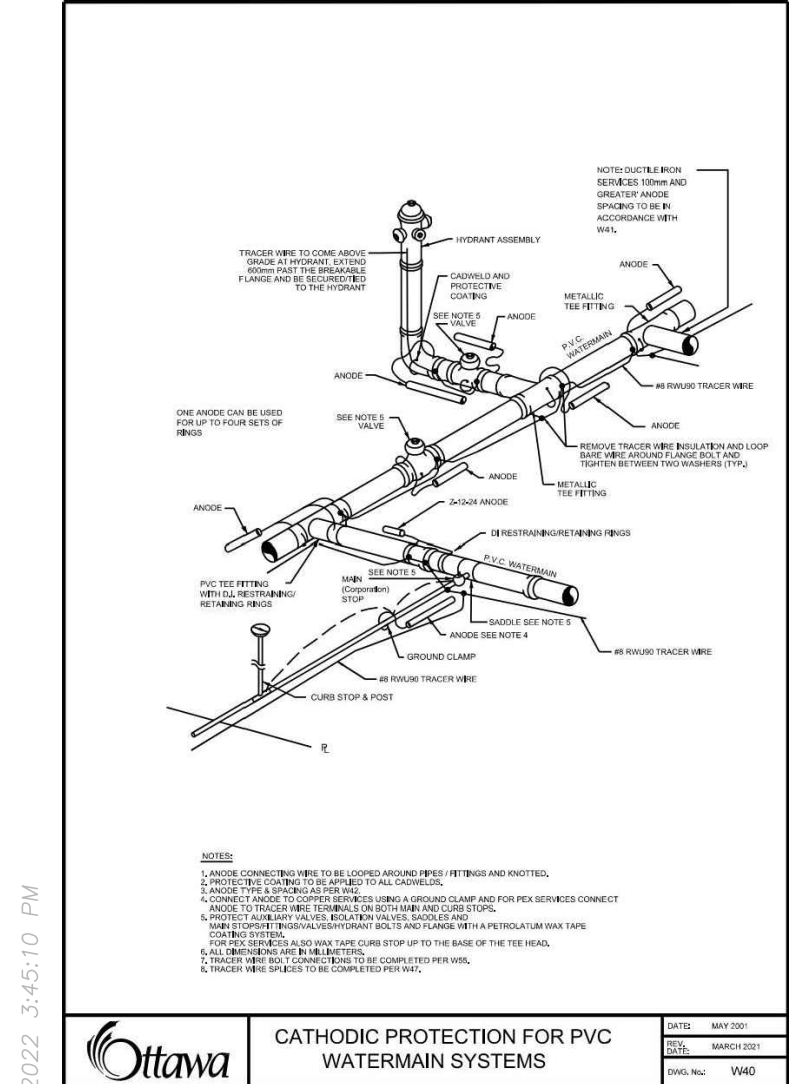


NOTE

COPYRIGHT © ZEIDLER ARCHITECTURE INC.

CONTRACTOR MUST CHECK AND VERIFY ALL DIMENSIONS ON THE JOB. ANY DISCREPANCY OR CONTRADICTORY INFORMATION WITHIN THIS SET OF DRAWINGS AND / OR OTHER CONSULTANTS' DRAWINGS MUST BE BROUGHT TO THE ATTENTION OF THE ARCHITECT BEFORE PROCEEDING.





SANITARY SEWER DATA									
LOCATION		DIAMETER	MATERIAL	CLASS	LENGTH	INVERT ELEVATIONS			
FROM	TO					UPSTREAM	DOWNSTREAM		
CAP AT BLDG	NICHOLAS ST. CONNECTION*	150mm	PVC	SDR-35	4.9m	63.66	63.56*		

*INVERT AT TOP BEND. CONNECT TO EXISTING PIPE AS PER CITY OF OTTAWA STD. S11.

STORM SEWER DATA									
LOCATION		DIAMETER	MATERIAL	CLASS	LENGTH	INVERT ELEVATIONS			
FROM	TO					UPSTREAM	DOWNSTREAM		
CAP 1.0m FROM BLDG	DAILY AVE. CONNECTION*	200mm	PVC	SDR-35	9.1m	62.37	62.19*		

*INVERT AT TOP BEND. CONNECT TO EXISTING PIPE AS PER CITY OF OTTAWA STD. S11

CROSSING TABLE				
CROSSING No.	CONDUIT ELEV. AT CROSSING	CONDUIT ELEV. AT CROSSING	CLEARANCE	CITY OTTAWA STANDARD DETAIL
CR-01	WM, BOT. 63.30	EX. SAN, TOP. #62.88	0.42m	-
CR-02	WM, BOT. 64.09	EX. STM, TOP. #63.79	0.30m	W25.2
CR-03	EX. WM, BOT. #62.75**	STM, TOP. 62.45	0.30m	-
CR-04	EX. HYDRO, BOT. #64.96*	SAN, TOP. 63.81	1.15m	-
CR-05	EX. HYDRO, BOT. #64.96*	WM, TOP. 63.50	1.46m	-
CR-06	EX. HYDRO, BOT. #64.27*	STM, TOP. 62.52	1.75m	-

* HYDRO DUCT BANK HAS BEEN ESTIMATED TO BE 0.5m BELOW GROUND AND 0.542m THICK.
** THE TOP OF EXISTING WATERMAIN WAS ASSUMED TO BE 2.2m BELOW GRADE.
CROSSING ELEVATIONS ARE APPROXIMATE AND THE CONTRACTOR IS REQUIRED TO DETERMINE THE PRECISE LOCATION, DEPTH AND SIZE OF EXISTING UTILITIES PRIOR TO CONSTRUCTION AND REPORT ANY DISCREPANCIES/CONFLICTS TO THE ENGINEER BEFORE COMMENCING WORK.

NOT FOR CONSTRUCTION

PROJECT

CF RIDEAU CENTRE REGISTRY SITE

PROJECT ADDRESS


70 NICOLAS ST.
OTTAWA, ON

TITLE

WATERMAIN DETAILS AND SEWER TABLES

PROJECT NO.	DRAWN	CHECKED
477846	JN	SM

DRAWING NO. D0718624	REVISION NO.



2

07-12-21-0197

#18624