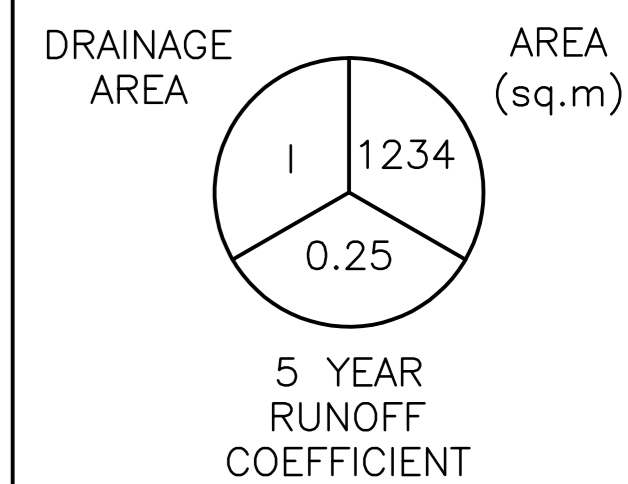
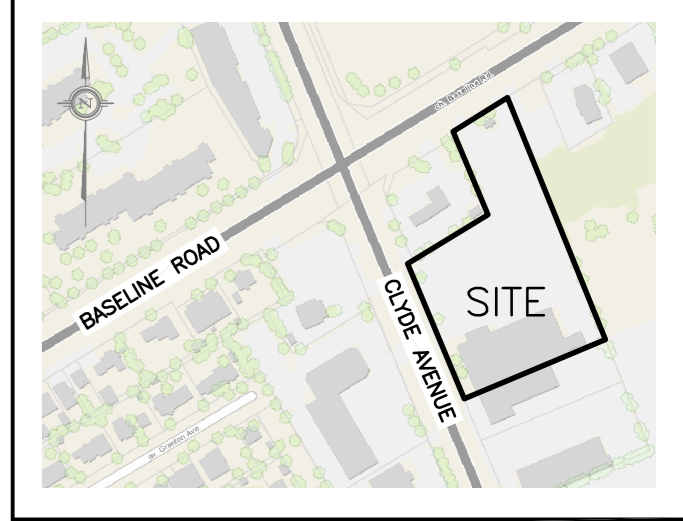


LEGEND



KEY PLAN



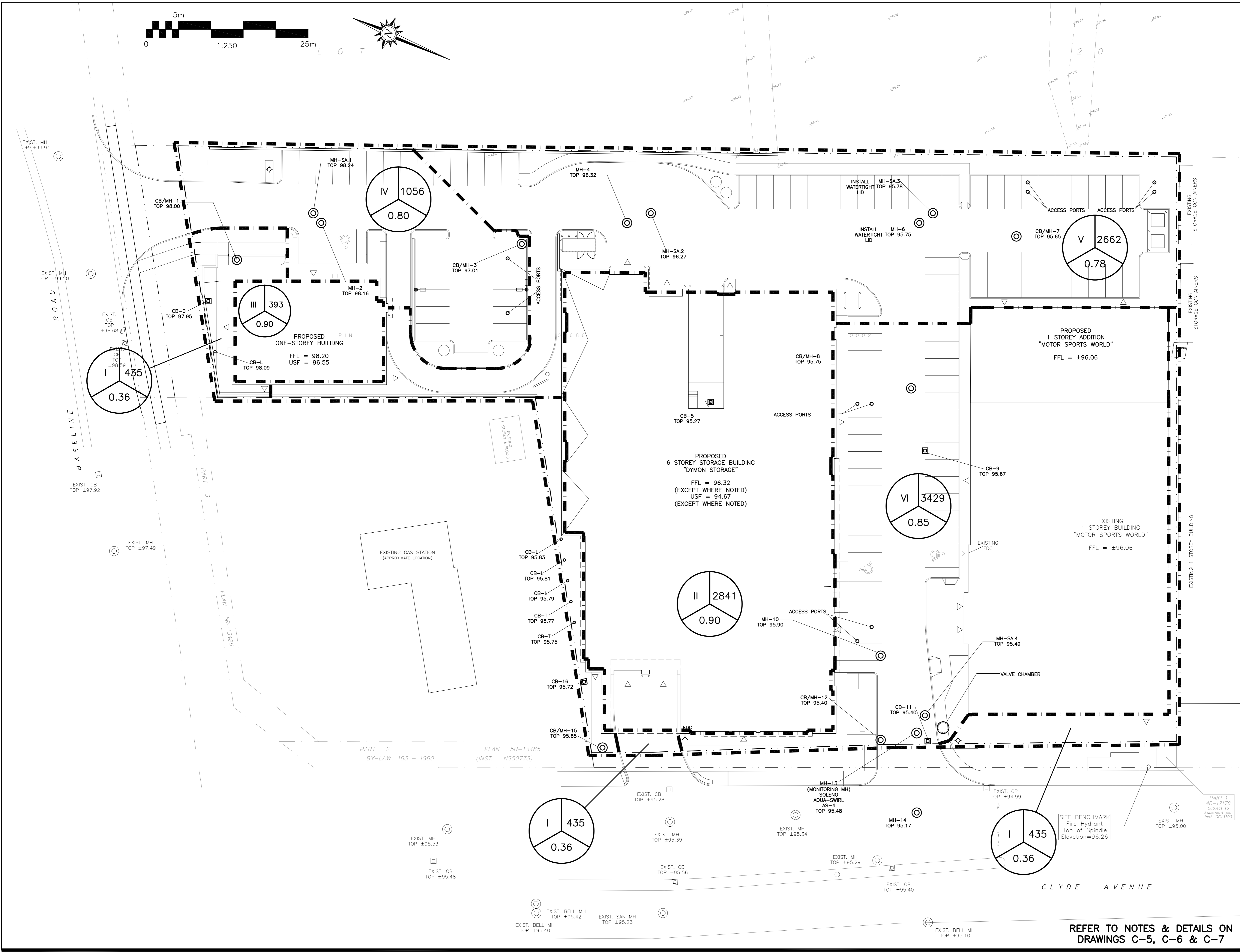
No.	DATE	REVISION
5	DEC 14-21	RE-ISSUED FOR APPROVAL
4	DEC 9-21	ISSUED FOR PERMIT
3	NOV 23-21	ISSUED FOR COORDINATION
2	JAN 8-20	ISSUED FOR APPROVAL
1	DEC 12-19	ISSUED FOR COORDINATION

D. B. GRAY ENGINEERING INC.
 Stormwater Management - Grading & Drainage - Storm & Sanitary Sewers - Watermain
 700 Long Point Circle 613-425-8044
 Ottawa, Ontario d.gray@dbgrayengineering.com

Project: **PROPOSED 6-STORY STORAGE FACILITY & 1-STORY BUILDING**
1375 CLYDE AVENUE
 OTTAWA, ONTARIO

DRAINAGE PLAN

Engineer's Seal: Drawn: **D.B.G.**
 Hor. Scale: 1:250
 Vert. Scale:
 Date: **SEP 17-19**
 Job No.: 19058
 Drawing No.: **C-8**
 of 8
 NOT VALID UNLESS SIGNED & DATED



REFER TO NOTES & DETAILS ON DRAWINGS C-5, C-6 & C-7