



**Site Plan Control and FLUDA : Design Drawings**

**NEW CAMPUS DEVELOPMENT FOR THE OTTAWA HOSPITAL**

Hospital and Central Utility Plant

930 Carling Avenue & 520 Preston Street, Ottawa, ON

SPC AND FLUDA - 1ST SUBMISSION

*November 30, 2022*

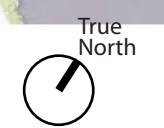
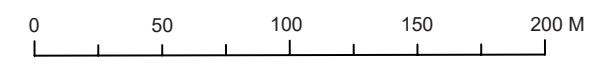


<b>TABLE OF CONTENTS</b>	<b>PAGE</b>
MASTER SITE PHASING PLAN.....	3
ILLUSTRATIVE SITE PLAN.....	4
SITE PLAN DIAGRAM.....	5
PARKING PLAN.....	6
LANDSCAPE PLANTING PLAN.....	7
LANDSCAPE TREE PLANTING LIST.....	8
SITE / BUILDING CROSS SECTIONS.....	10
LANDSCAPE TREATMENTS AT SITE BOUNDARIES.....	11
LANDSCAPE PRECEDENTS & CHARACTER.....	12
SITE FURNISHINGS.....	14
VIEWS ANALYSIS.....	15
CONCEPTUAL RENDERINGS.....	17
LANDSCAPE EXPERIENTIAL VIGNETTES.....	23
CONTEXT PLAN 1:1000.....	27
LIGHTING DESIGN CONCEPT.....	28
 <b>APPENDIX A: LARGE FORMAT PLANS</b>	

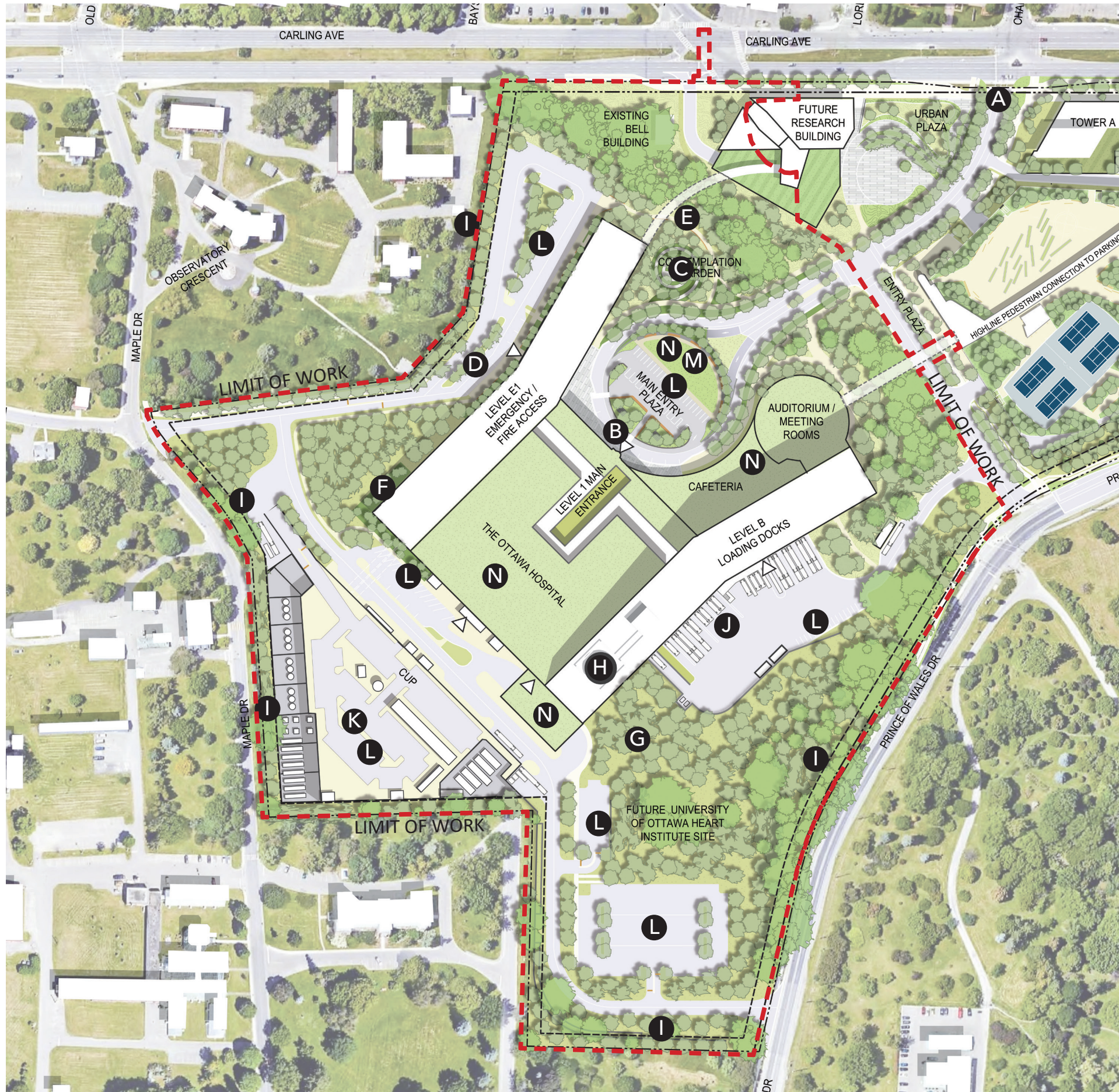




Phase	Project
1	Master Site Plan Approvals
2	Parking Garage
3	New Hospital CUP
4	New Hospital
5	Potential LRT Station Expansion
6	Research Tower
7A	Carling Tower A
7B	Carling Tower B
7C	Carling Tower C
8	New Hospital Expansion
9	New Hospital and UOHI Expansion







## LEGEND

- A CARLING AVENUE CAMPUS GATEWAY
- B MAIN ENTRY PLAZA
- C CONTEMPLATION GARDEN
- D WEST ENTRANCE
- E WOODLAND PATH
- F SUNKEN GARDEN
- G MEANDERS
- H HELIPORT
- I SHELTER BELTS
- J SERVICE DOCKS
- K CENTRAL UTILITY PLANT (CUP)
- L PARKING
- M LAWN
- N GREEN ROOF

# NEW CAMPUS DEVELOPMENT FOR THE OTTAWA HOSPITAL

## HOSPITAL AND CUP: ILLUSTRATIVE SITE PLAN

NOVEMBER 30, 2022

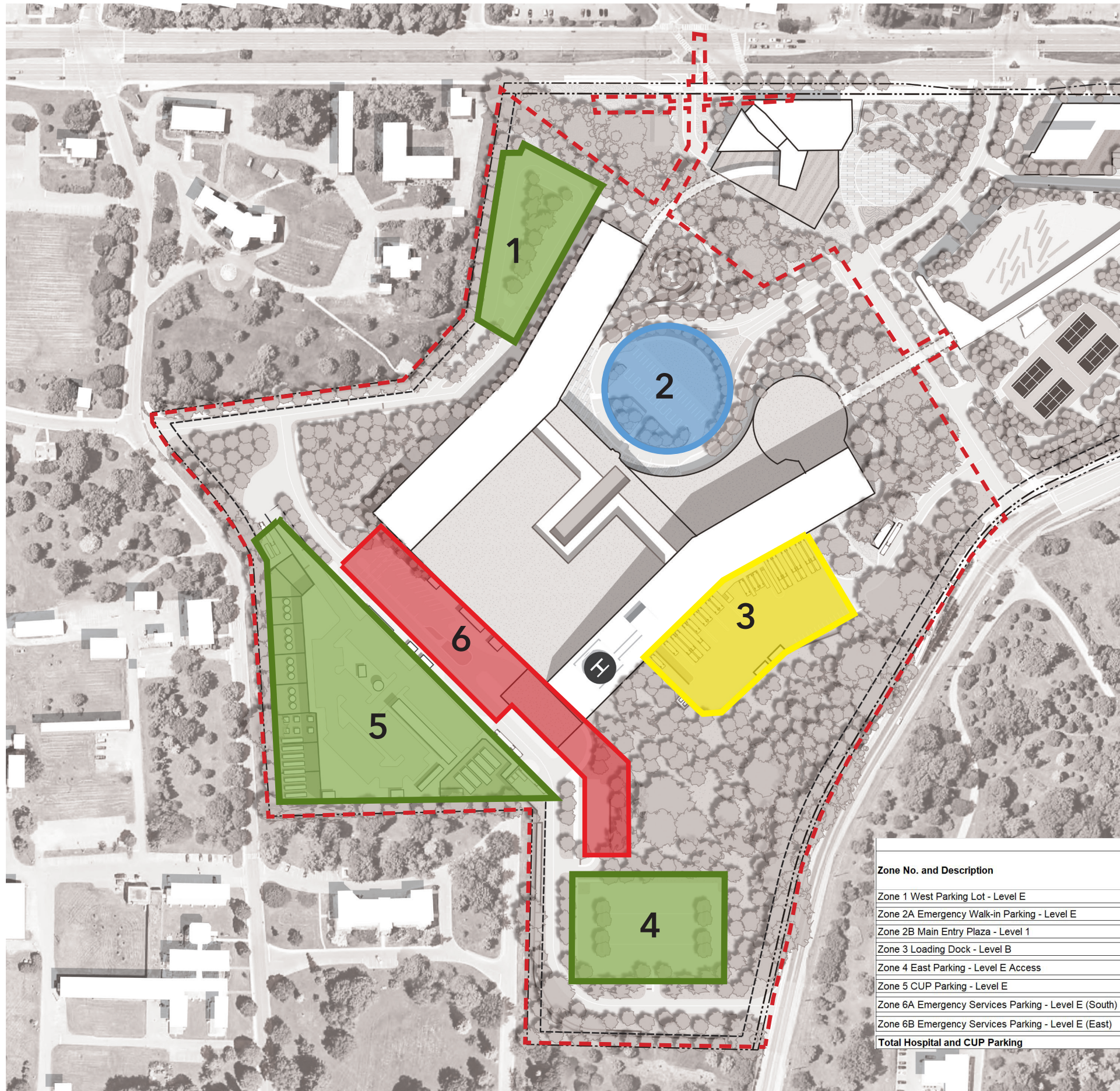
0 50 100 150 200 M







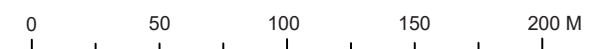




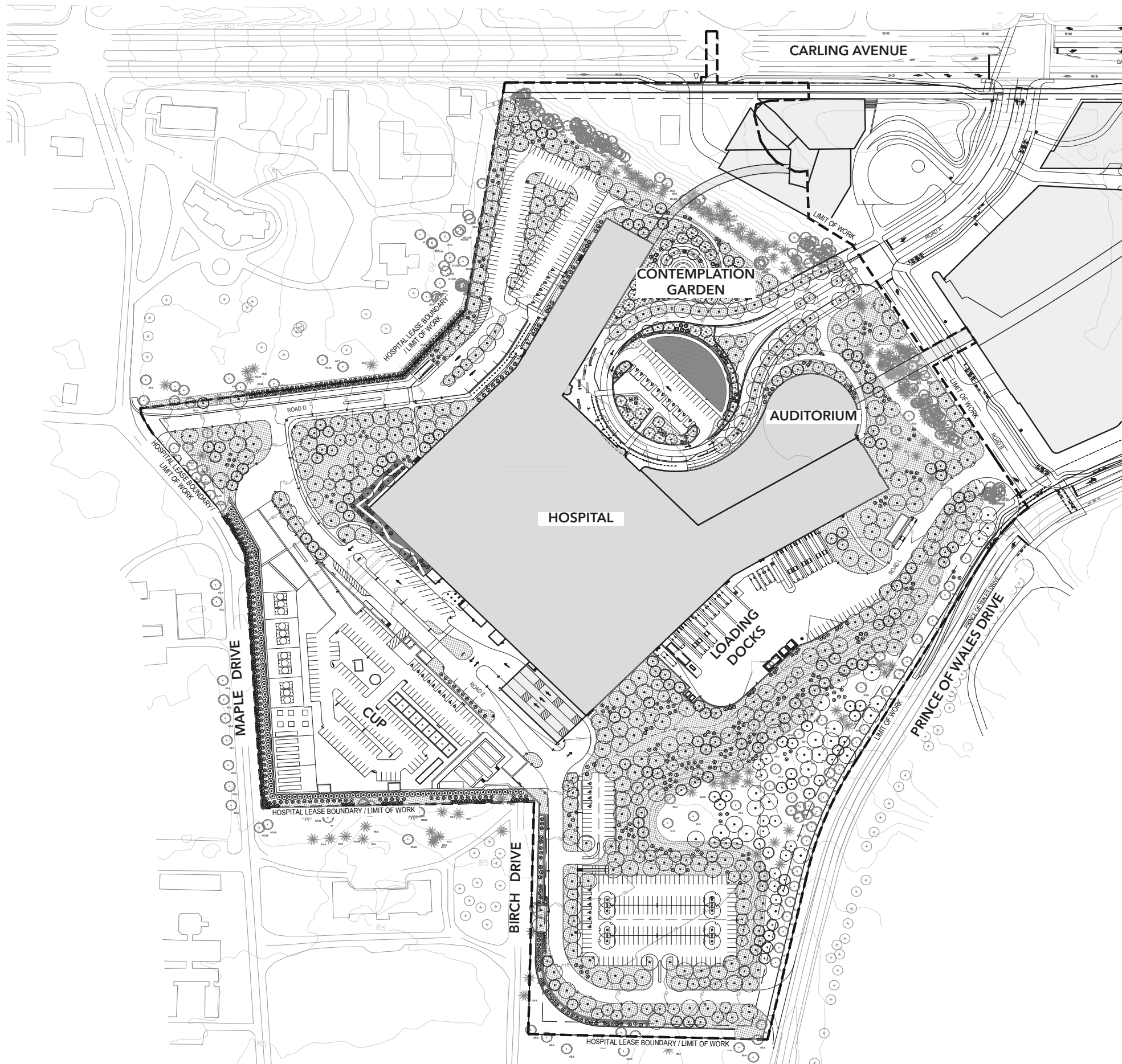
### LEGEND

1. WEST PARKING LOT
2. WALK-IN E.D (2A) AND MAIN ENTRY PLAZA (2B)
3. LOADING DOCK
4. EAST PARKING LOT
5. CUP
6. EMERGENCY SERVICES

Zone No. and Description	Total Parking Count	Included in Total Count	
		Accessible Parking	Limited Mobility Parking
Zone 1 West Parking Lot - Level E	128	6	12
Zone 2A Emergency Walk-in Parking - Level E	76	12	12
Zone 2B Main Entry Plaza - Level 1	34	11	6
Zone 3 Loading Dock - Level B	18		
Zone 4 East Parking - Level E Access	162	6	12
Zone 5 CUP Parking - Level E	142	9	18
Zone 6A Emergency Services Parking - Level E (South)	23		
Zone 6B Emergency Services Parking - Level E (East)	25	4	4
<b>Total Hospital and CUP Parking</b>	<b>608</b>	<b>48</b>	<b>64</b>

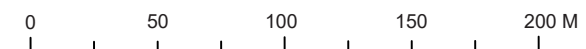






**NEW CAMPUS DEVELOPMENT FOR THE OTTAWA HOSPITAL**  
**LANDSCAPE PLANTING PLAN**

NOVEMBER 30, 2022





**Deciduous Trees**



*Acer saccharum* - Sugar Maple



*Quercus rubra* - Red Oak



*Betula papyrifera* - White Birch



*Amelanchier*- Serviceberry



*Acer nigrum* - Black Maple



*Cercis canadensis* - Eastern Redbud



*Cornus alternifolia*- Alternate-leaved Dog-



*Prunus Americana*- American plum, wild



**Evergreens**



*Pinus strobus* - Eastern White Pine



*Juniperus virginiana* - Eastern Red Cedar

**Mixed Woods Understory**



*Arctostaphylos uva-ursi*- Bearberry



*Tiarella*- Foam Flower



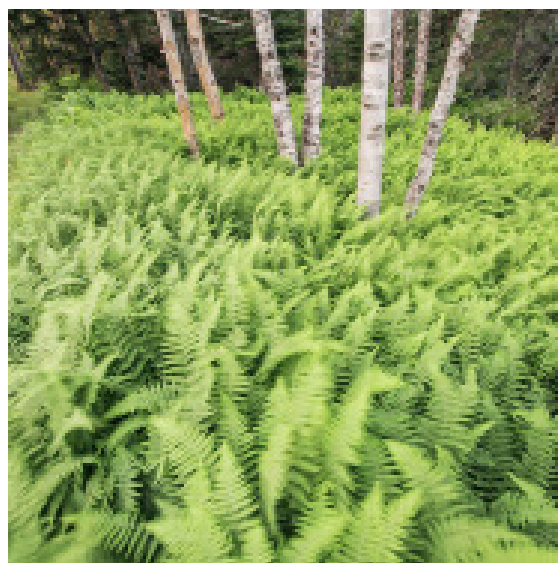
*Adiantum*- Madenhair Fern



*Vaccinium Angustifolium* - Lowbush



*Melanthiaceae*- Trillium



*Matteuccia struthiopteris* -Ostrich

**Co-dominant Understory**



*Hamamelis virginiana* - American Witch-

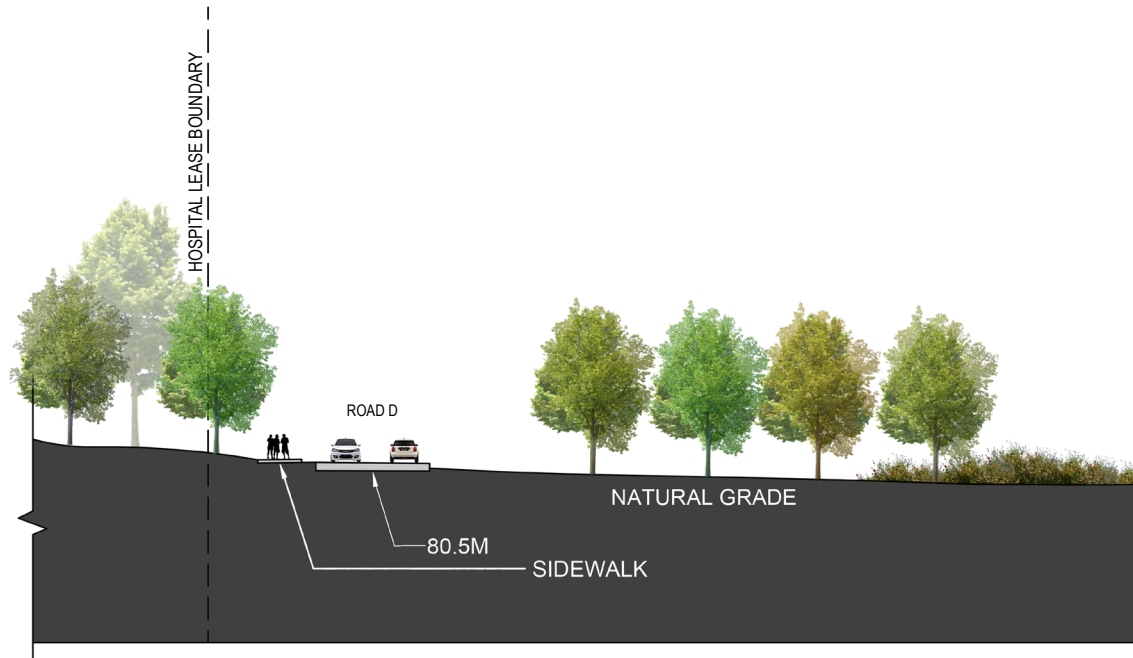


*Viburnum acerifolium* -Mapleleaf

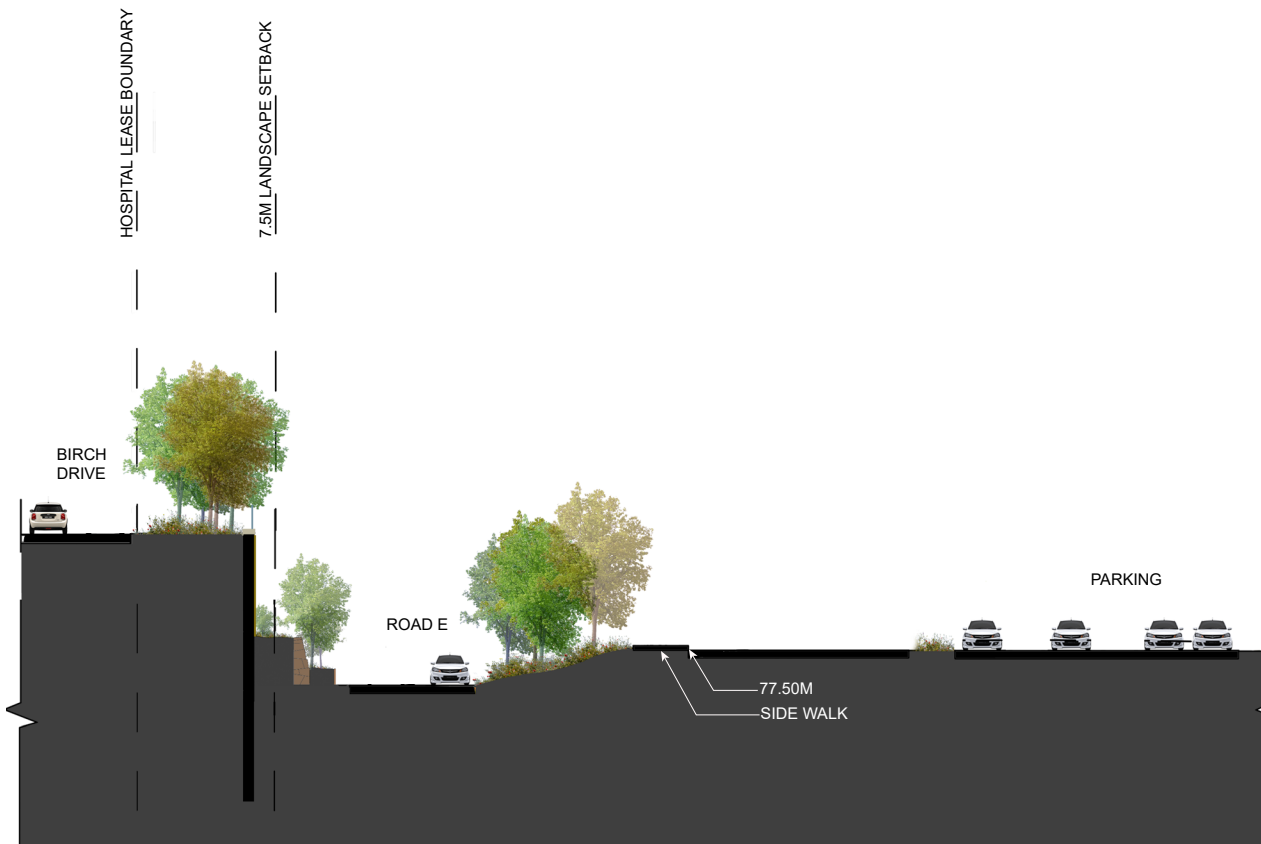


*Rhus aromatica*-Tufted Hairgrass

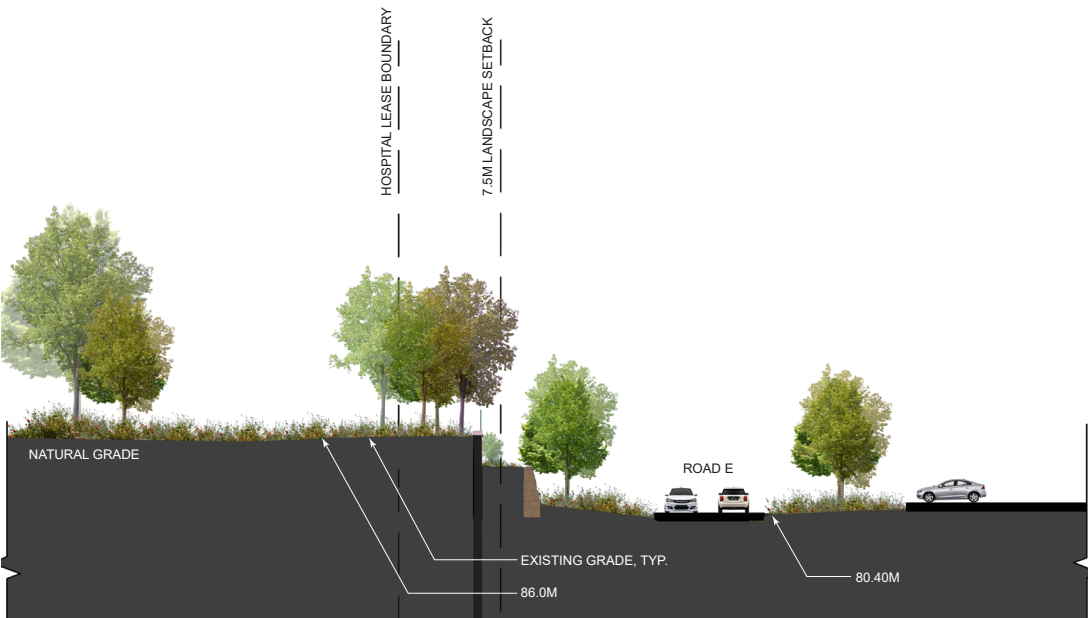
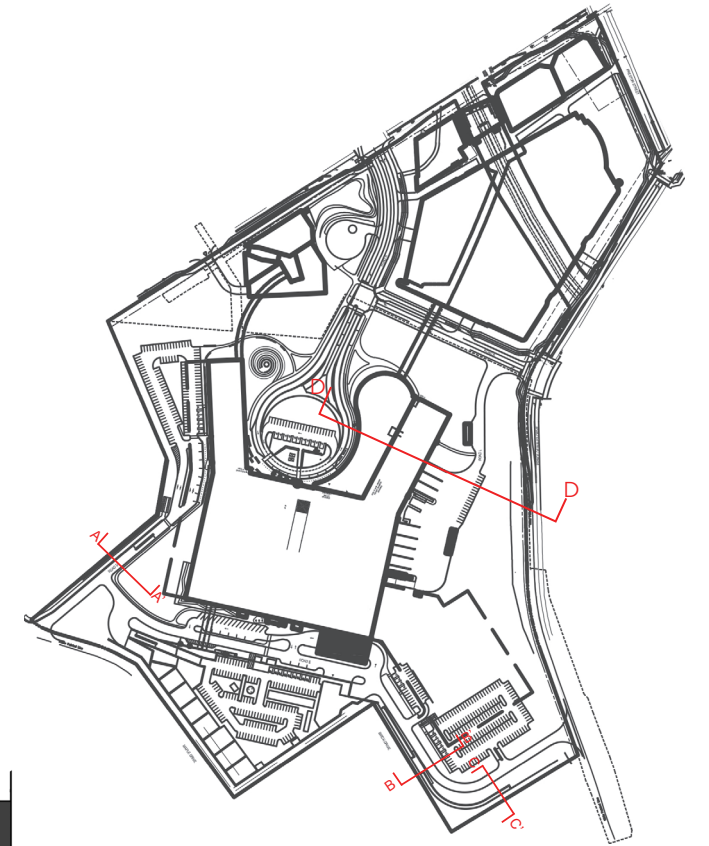




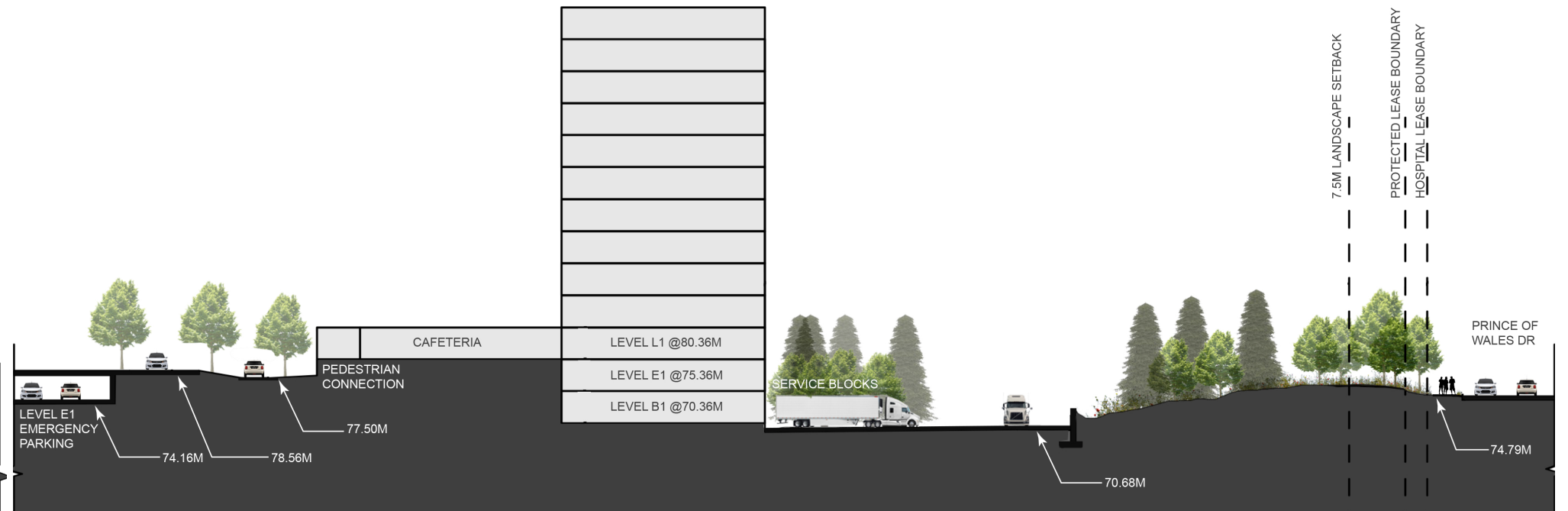
SECTION A



SECTION B

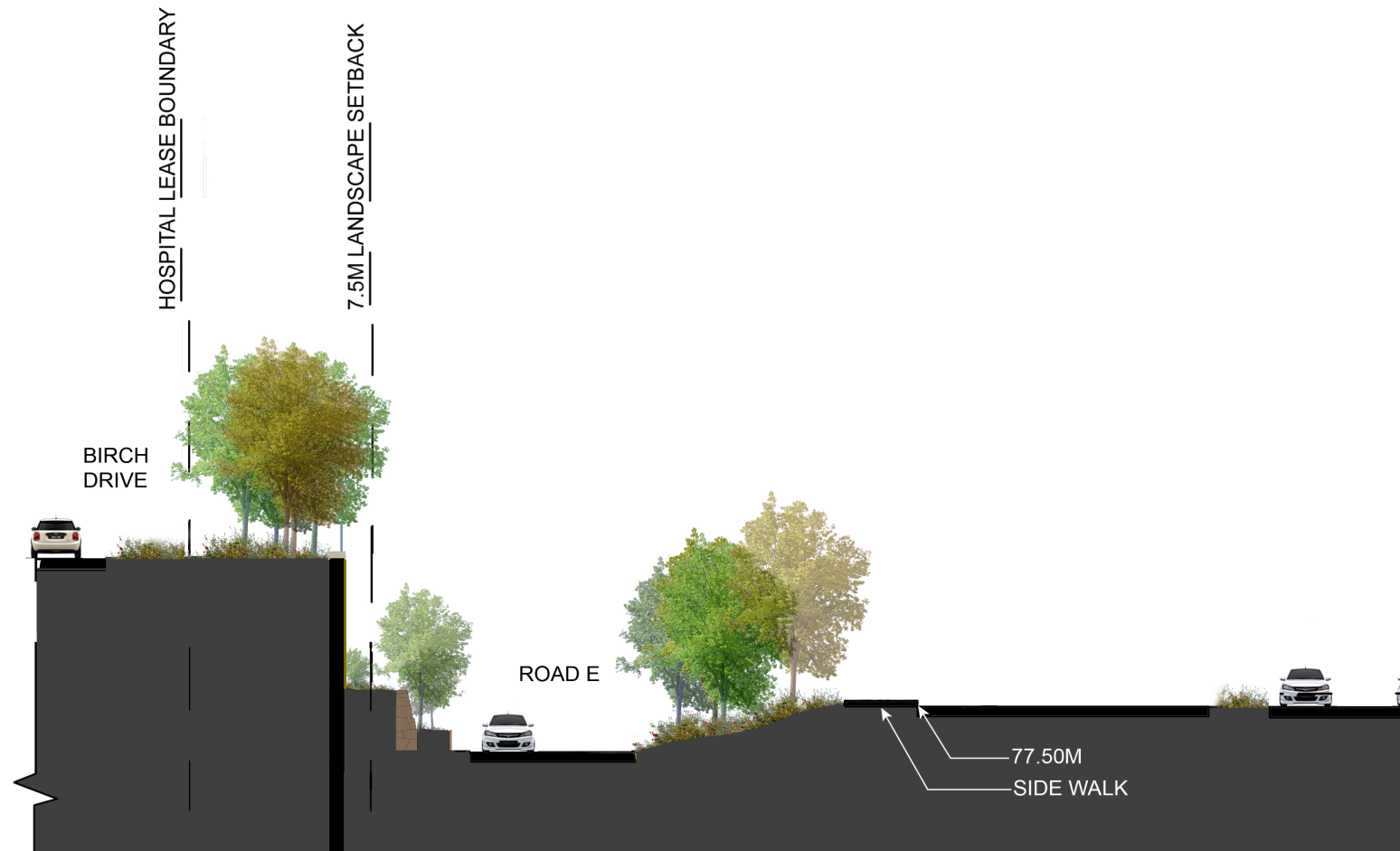


SECTION C

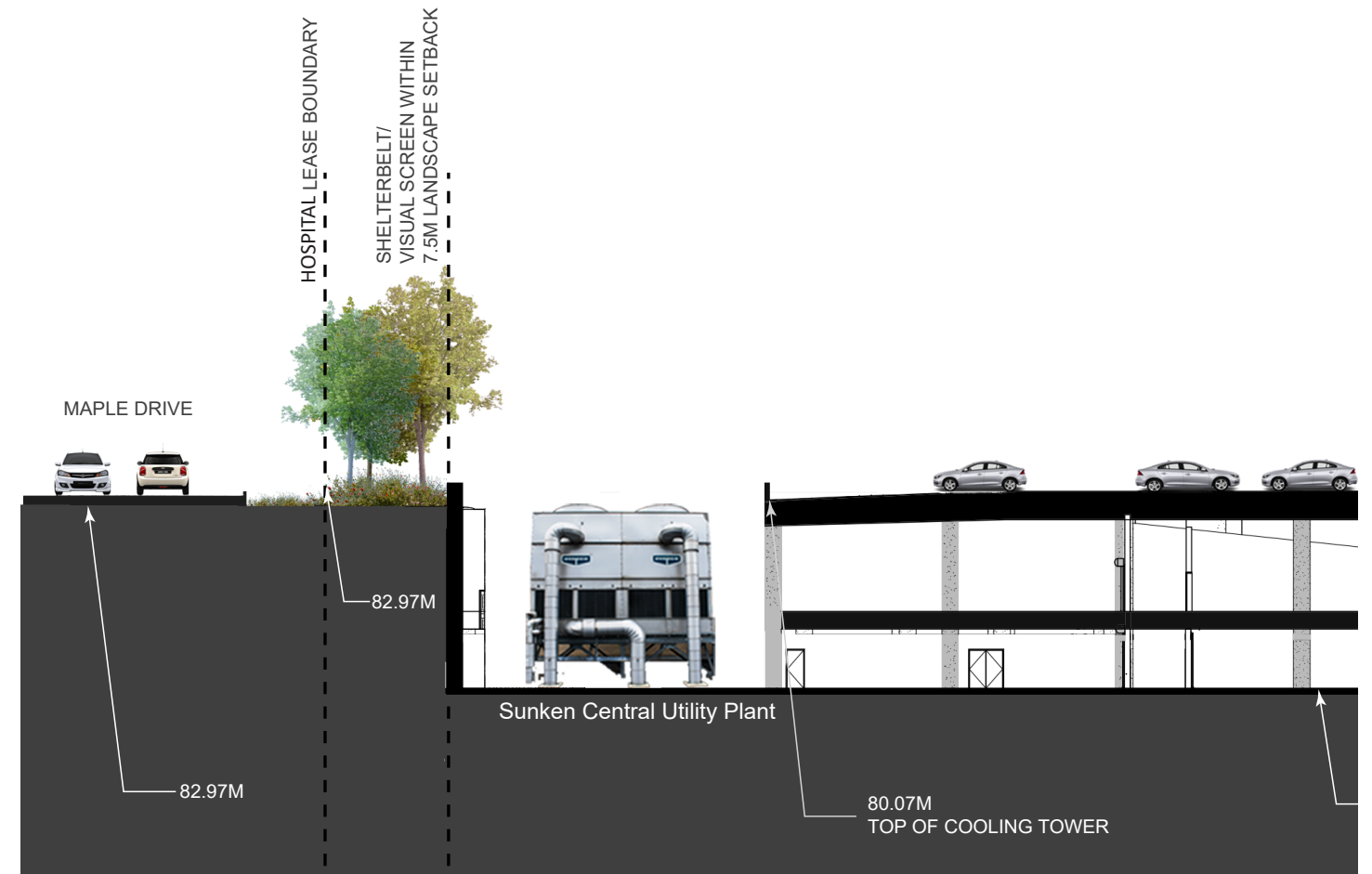


SECTION D

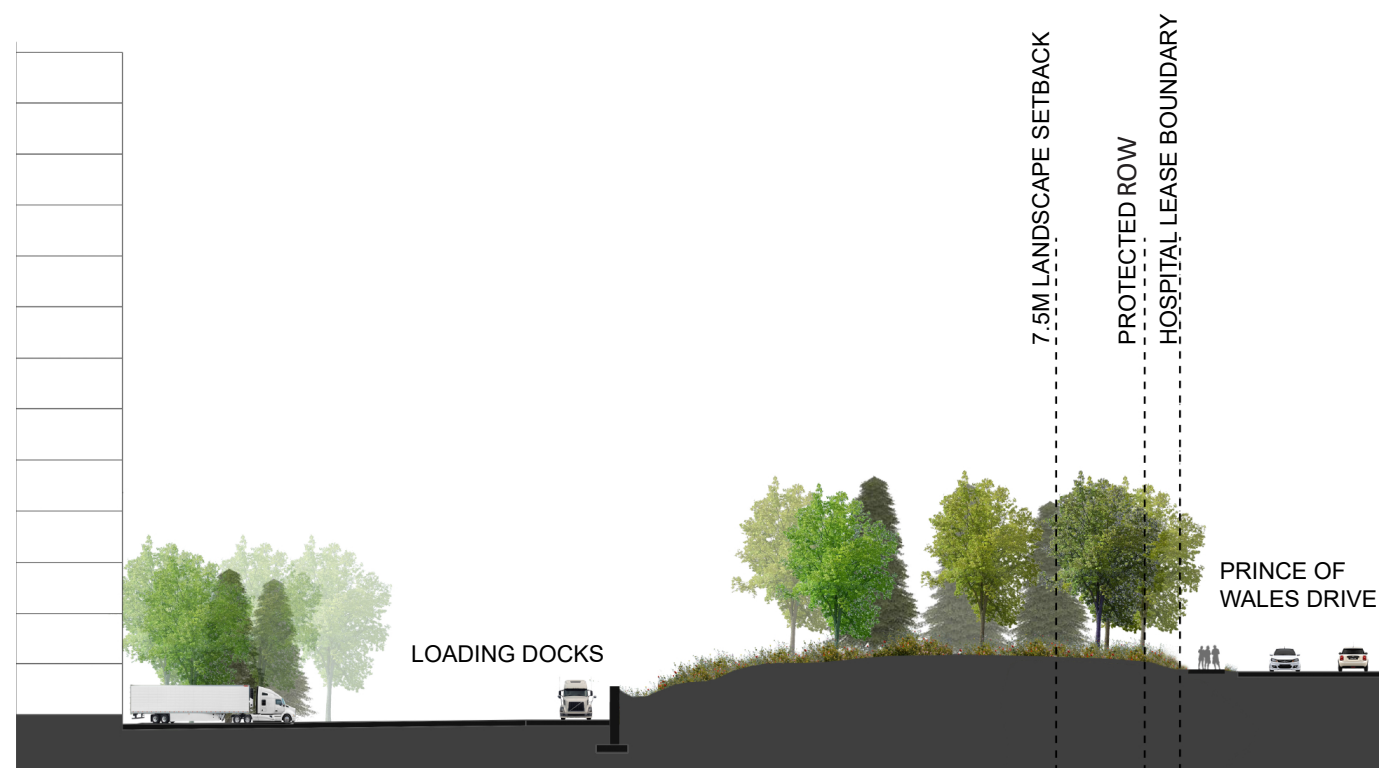




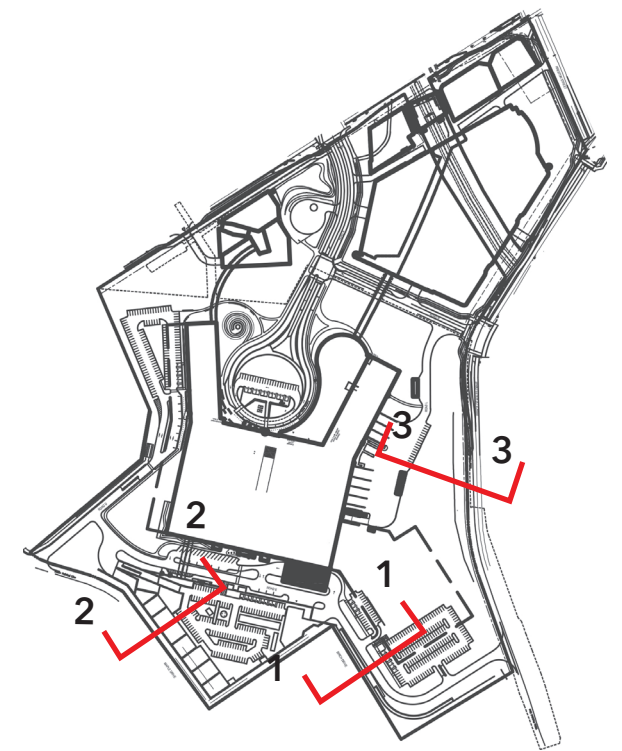
Section 1



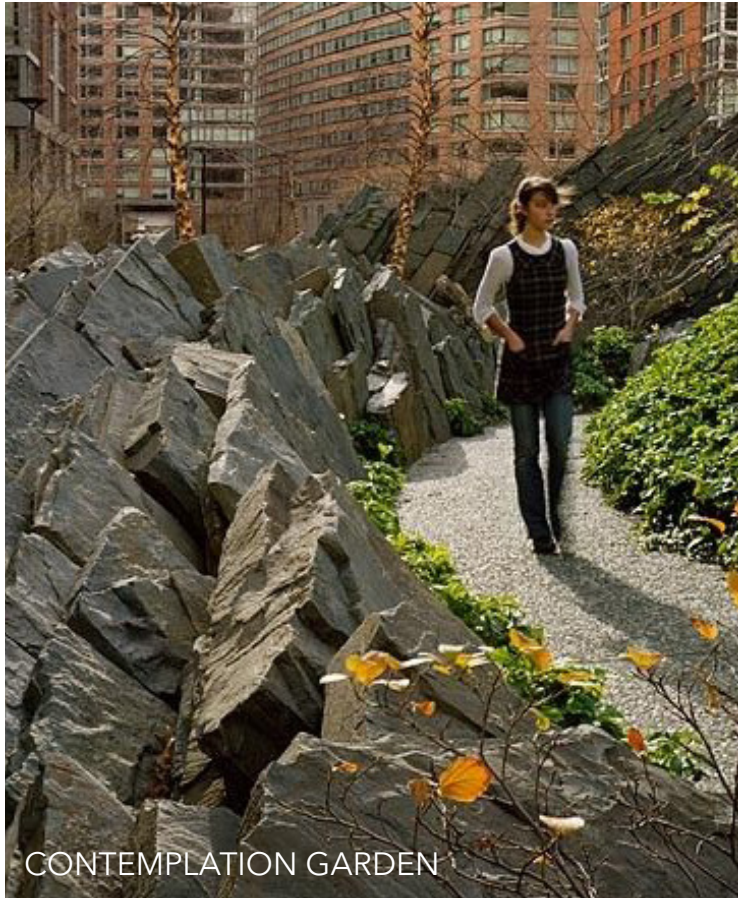
Section 2



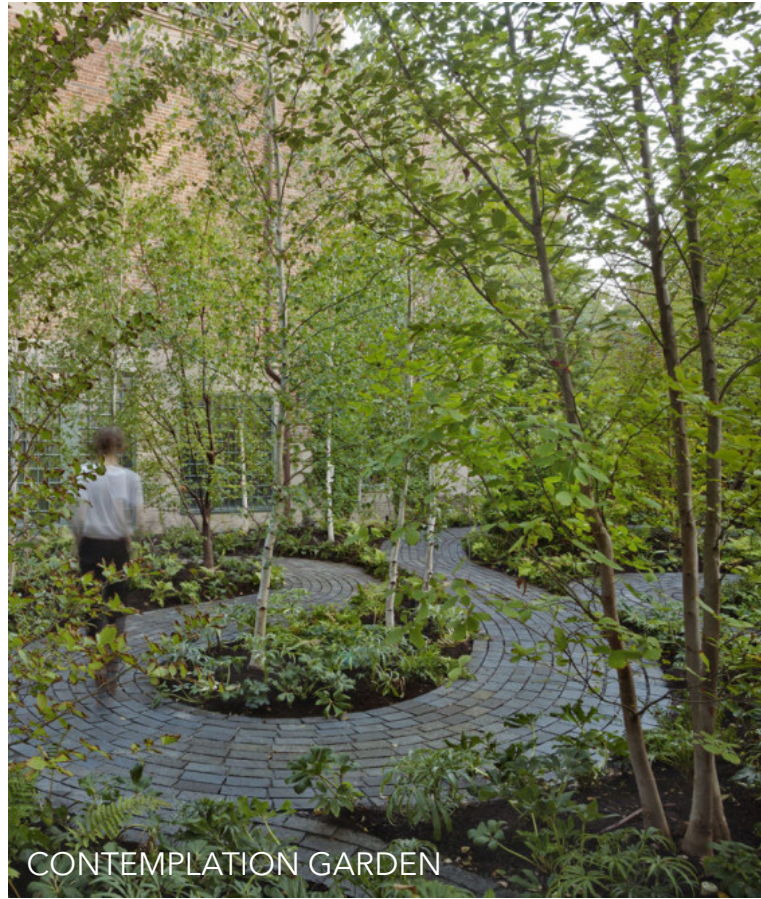
Section 3







CONTEMPLATION GARDEN



CONTEMPLATION GARDEN



WESTSIDE LANDSCAPE



ENTRY PLAZA



GREEN ROOF





ALVAR GRASSLAND PLANTING



ALVAR GRASSLAND PLANTING

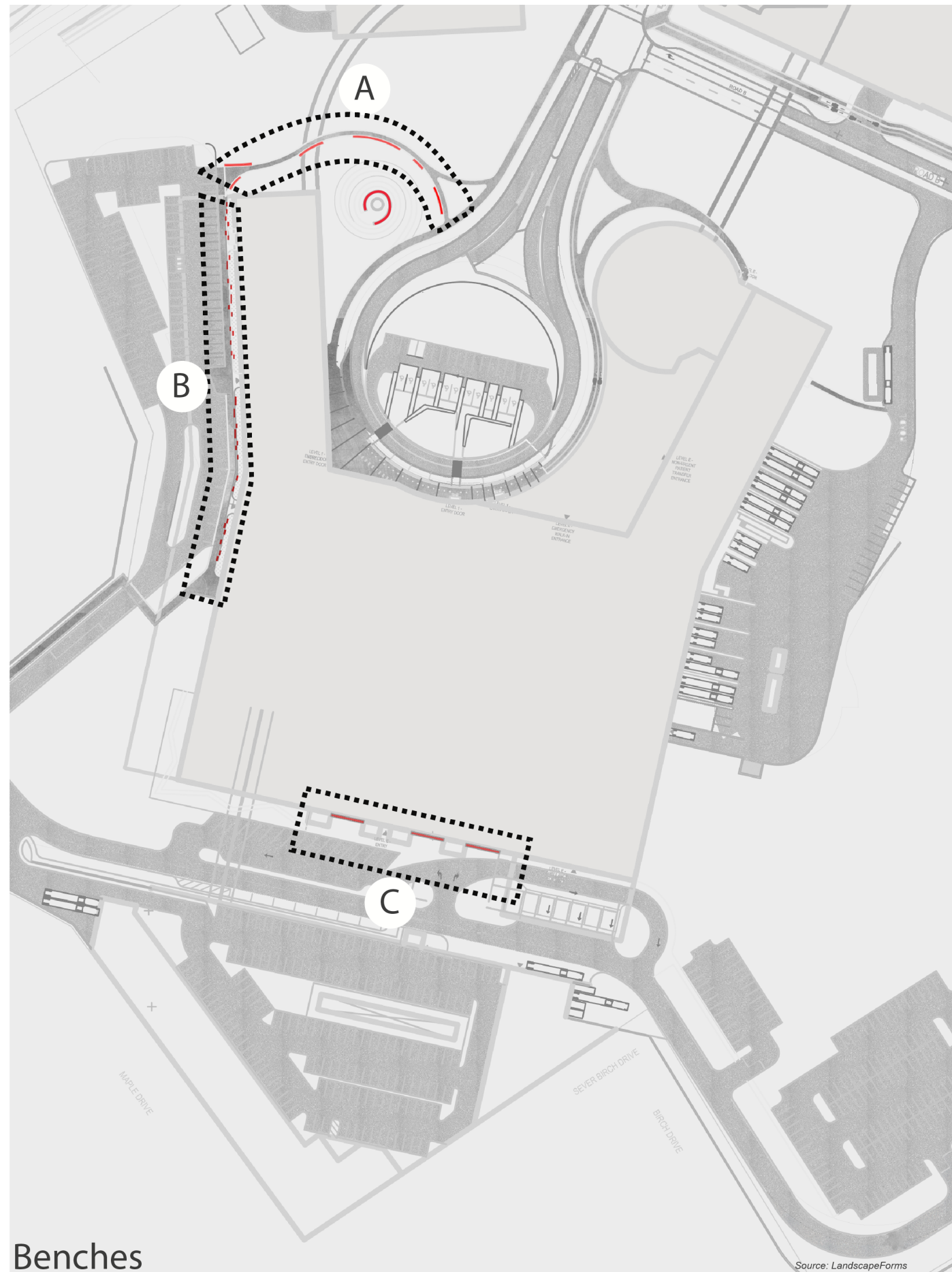


SUNKEN GARDEN (INSIDE VIEW)



SUNKEN GARDEN (OUTSIDE VIEW)





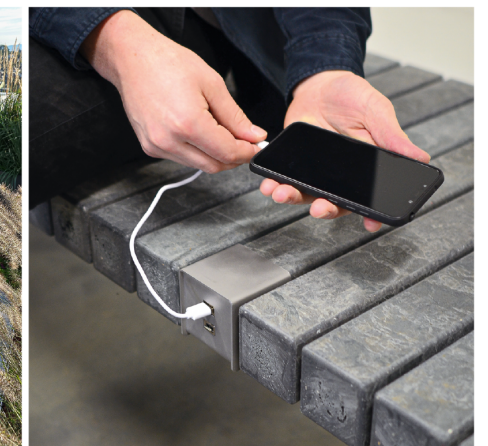
Benches



**A** *Rough&Ready (R&R) Seat Walls* have a continuous substructure, usually comprising CorTen steel. This sheet structure possesses recesses into which the beams are mounted. The transverse R&R beams (50 or 60 cm deep), made from FSC hardwood, are a natural anti-skate solution. R&R back elements and armrests are easy to mount. Both the straight and curved R&R Seat Wall models generally allow customisation.



**B** *Solid Seat Blocks* are mobile streetscape elements in which integrated benches and planters are combined to create an inviting, green space. The blocks are 100 cm – 39” wide with a double-sided seat.



**C** *Solid Staple Benches* comprise sturdy, crosswise-positioned Solid slats (7x7 cm – 2.8”x2.8”) on an integrated steel structure. The benches have a slender design, but have a powerful architectural impact. The steel base structure is powder coated in a RAL colour. Despite its slender appearance, the bench is strong and rigid.





**Views Analysis - Referenced Views #1**

View from Prince of Wales Drive - Extensive existing tree cover and landscaping in addition to enhanced plantings along the west side of Prince of Wales Drive fully shroud the lower floors of Tower B year round when viewed by pedestrians, cyclists and vehicles traveling along this scenic drive.



**Views Analysis - Referenced Views #2**

View from intersection of Prince of Wales Drive and Road B - Tower B extends upward from the loading area that is fully shrouded by existing and proposed plantings along Prince of Wales Drive.



Views Analysis - Key plan



**Views Analysis - Referenced Views #3**

View from intersection of Prince of Wales Drive and Preston Street - Tower B extends upward beyond The Park, Highline LRT Link and Parkade Structure in the foreground.



**Views Analysis - Referenced Views #4**

View east from the intersection of Carling Avenue and Maple Drive - Tower A aligns well with the mass and height of the Dominion Observatory buildings in the foreground.





**Views Analysis - Referenced Views #5**

View from Queen Elizabeth Driveway near Commissioners Park looking southwest through Dow's Lake - Tower B extends upward behind the Dow's Lake Pavilion, yet lower than the adjacent residential development as part of the Preston Carling District Secondary



**Views Analysis - Referenced Views #6**

View from Maple Drive including the Photo Equatorial Building as part of the Dominion Observatory in the foreground. Tower A spans the background in-line with the scale of the tree line beyond.



**Views Analysis - Key plan**



**Views Analysis - Referenced Views #7**

View from adjacent to the Saunders Building looking north - Tower B appears from behind the existing mature tree cover with the podium extending westward behind the existing tree cover.



**Views Analysis - Referenced Views #8**

View from Maple Drive north toward the Hospital - Tower A and the Podium are located in the background beyond the existing mature tree cover along the north edge of Maple Drive. Tower B is located behind the mature tree cover. Additional plantings are anticipated in this area and not shown.





The Hospital as viewed by day from the northwest including the existing mature trees of the escarpment in the foreground, Main Plaza and Pavilion at the center and the Main Concourse and Entrance flanked by Towers A and B beyond.





The Hospital as viewed by evening from the north west including the existing mature trees of the escarpment in the foreground, Main Plaza and Pavilion at the center and the Main Concourse and Entrance flanked by Towers A and B beyond.





Illustration depicts the legibility and character of this arrival landscape during daytime





Illustration depicts the legibility and character of this arrival landscape during evening





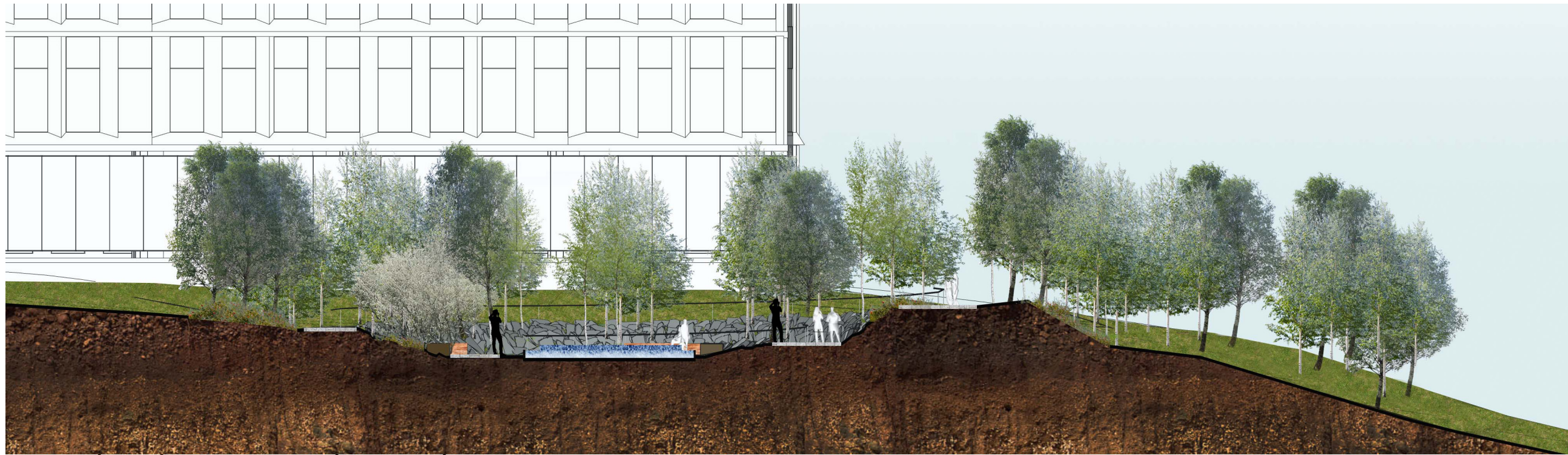
Future Urban Plaza with the curving steps and sit out court - Fall





Future Urban Plaza with the curving steps and sit out court - Winter





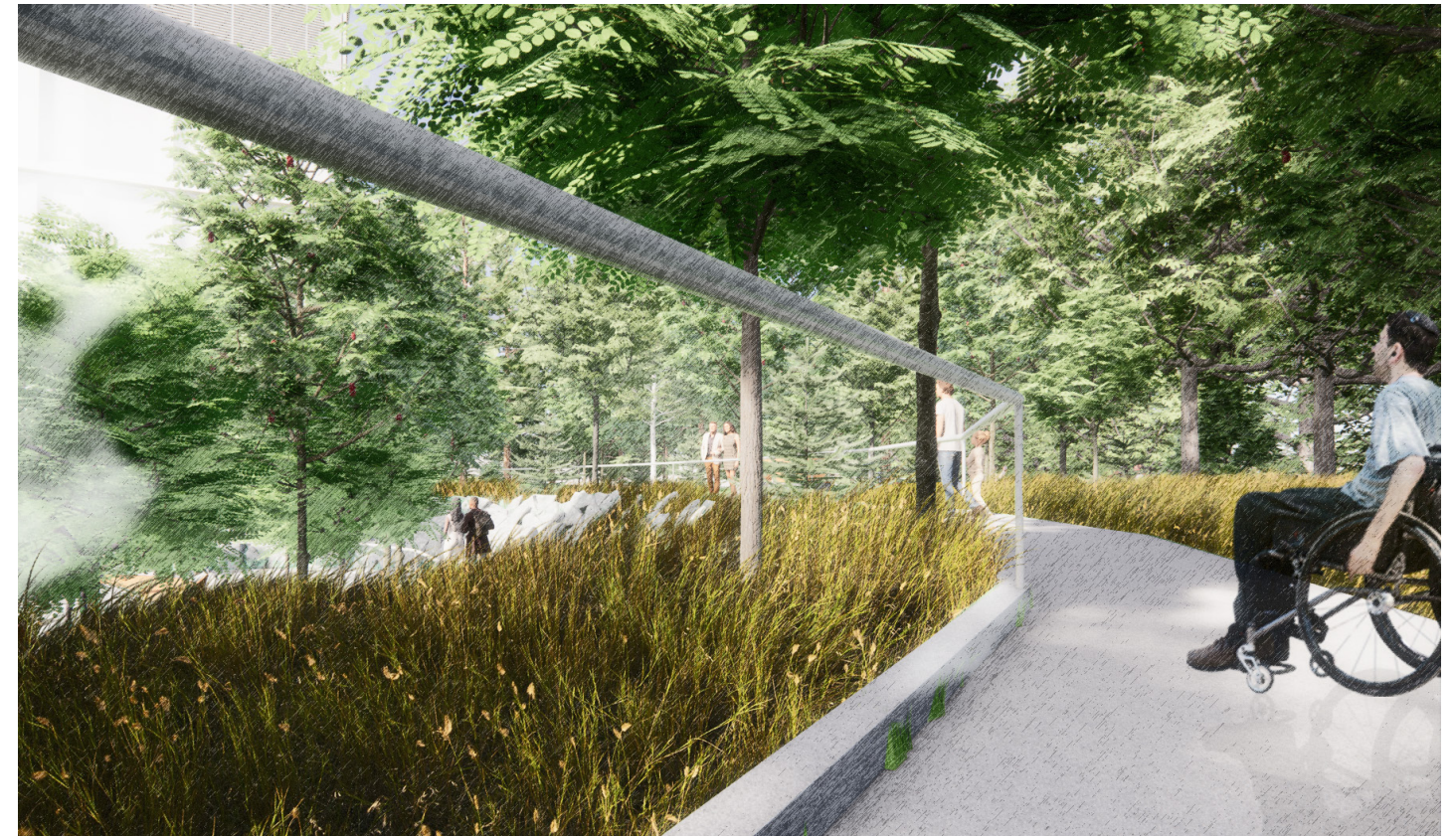
**Section through stone contemplation garden**

Section through the contemplation garden and the woodland path. Portions of the path to provide close access to the escarpment's mature trees, while also ensuring the health and safety of the trees by not building within their root zone



**Plan of stone contemplation garden**

Illustration shows a plan view of the contemplation garden in the context of the site. From the hospital's main entrance, a loop of connected landscape spaces provides access.



**Stone contemplation garden**

Upper Spiral Path at Contemplation Garden illustrates the nature of the spiral ramp. This particular view is from upper portion of the spiral path looking towards the lower levels.





**Lower Spiral Path at Contemplation Garden**

Illustrates the character of the lower section of the spiral ramp. This view also demonstrates the various parts of the spiral path assembly, including, curb, hand-rail, native planting terrace, and stone slab retaining wall.



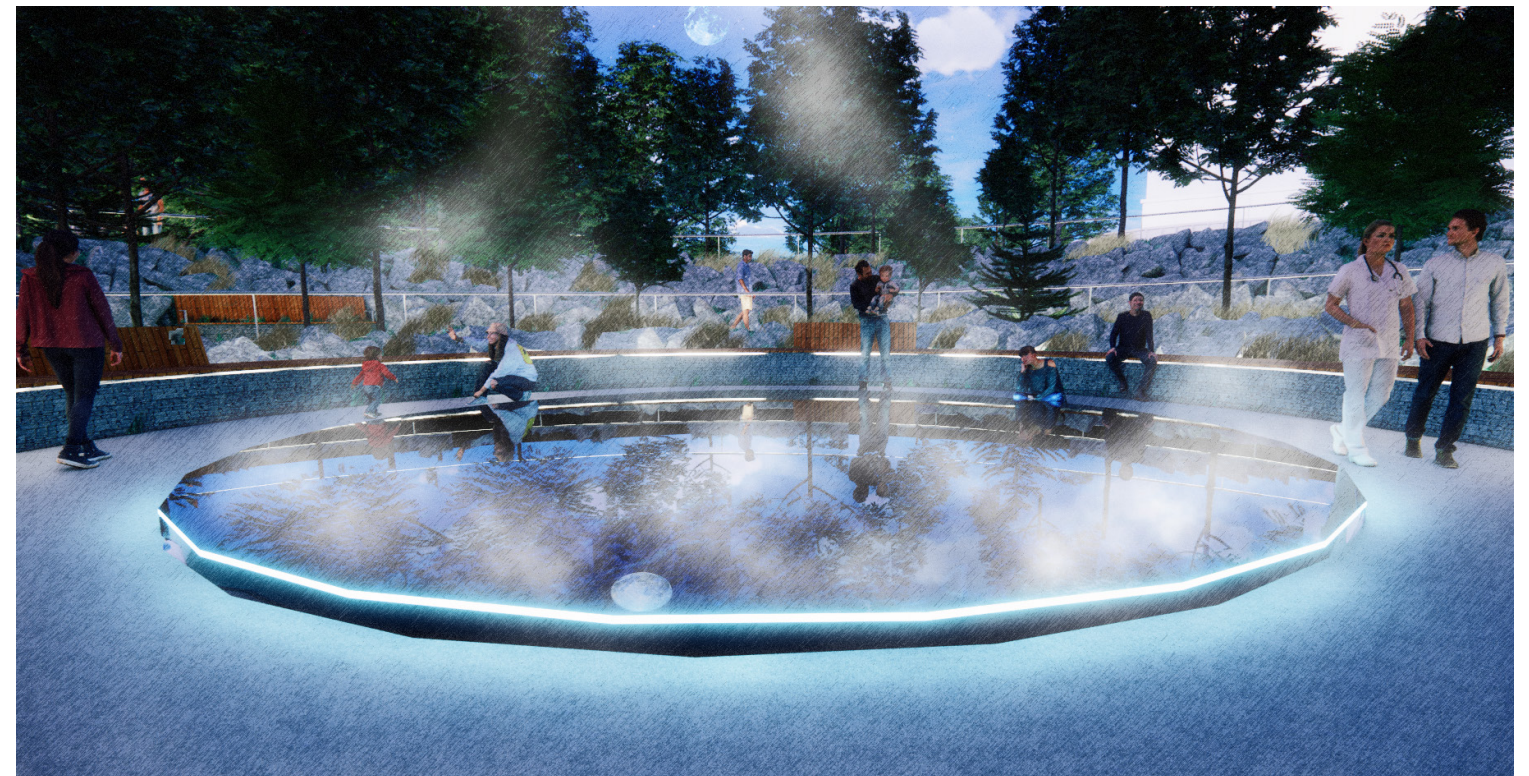
**Illuminated handrail along spiral path**

An illuminated handrail allowing visitors to use the space after dark. It also allows the space to be viewed at night from the adjacent bed tower.



**Lower Spiral Path at Contemplation Garden**

Shows the terminus of the spiral path, the lower plaza with potential reflection pool ringed by wood-topped stone bench accommodating a range of sitting postures.



**Stone Contemplation Garden**

Lower Plaza and reflecting pool at Contemplation Garden illustrates the experience of the lower plaza in the early evening hours.





**Enlarged Plan at Sunken Garden**

This garden provides a protected, calming view to Dialysis patients on Level E of the Hospital. Garden walls mitigate views of parking and roadways



**Section of Sunken Garden**

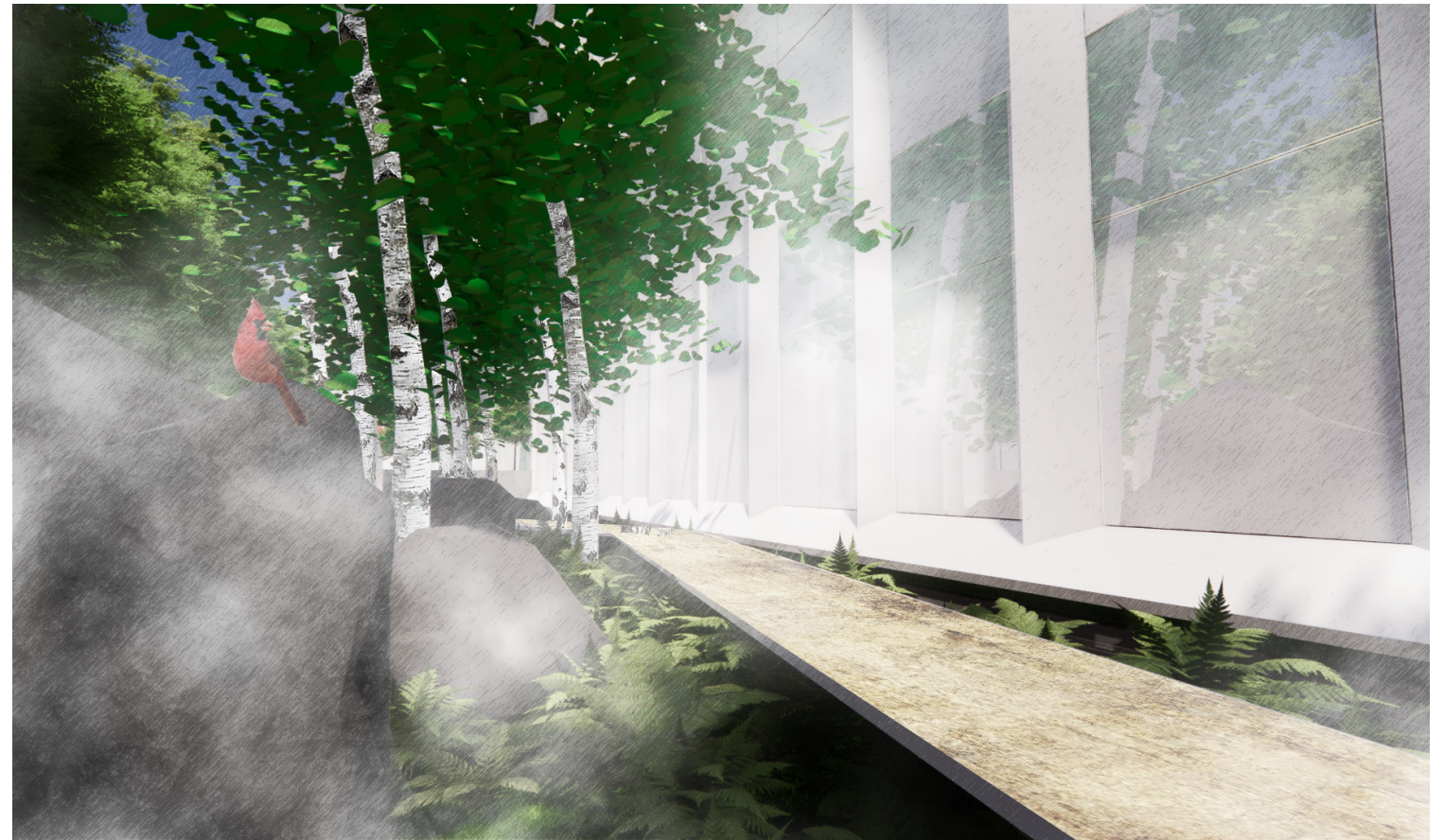
This section demonstrates the inside/outside nature of this landscape feature





### Sunken Garden

Demonstrates a typical inside/out-side encounter with a sunken garden.

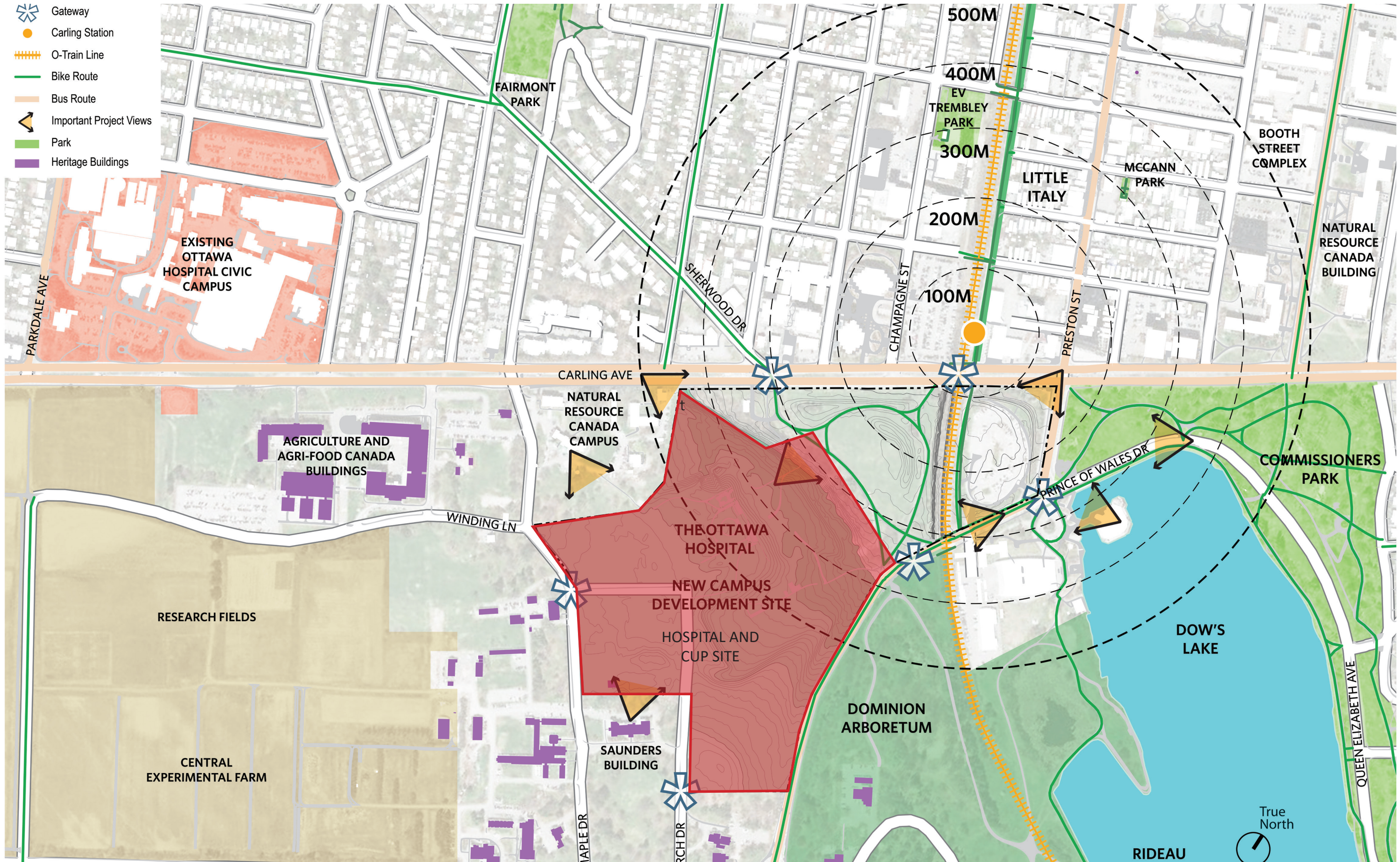


### Sunken Garden

Shows an understory of ferns, sedges, and woody shrubs with an overstory of white birch. An elevated path provides maintenance and visual interest, not for public use



-  Gateway
-  Carling Station
-  O-Train Line
-  Bike Route
-  Bus Route
-  Important Project Views
-  Park
-  Heritage Buildings





## Lighting Design Concept

Lighting for the campus is designed to convey intention. It will support visual performance and safety while enhancing intuitive way-finding, encouraging exploration of pathways and inspiring interaction with the natural environment and cultural artwork displays.

Lighting systems are not designed to be the focal point, but rather to focus attention on natural and architectural elements. A primary goal of the lighting design is to create a welcome destination that transitions the urban built environment to the natural and scenic vistas.

Another primary goal of the lighting design is to limit sky glow and light trespass onto adjacent sites as well as into the hospital itself. Proper placement and control of site lighting will enhance evening views while mitigating night time light contribution into patient sleeping rooms.

Site lighting is designed to be directed downwards in support of a dark night sky and bird-friendly practices. All site lighting will utilize warm white 3,000K Correlated Color Temperature (CCT) LED technology to further mitigate sky glow and support circadian rhythms.

## Parking and Roadways

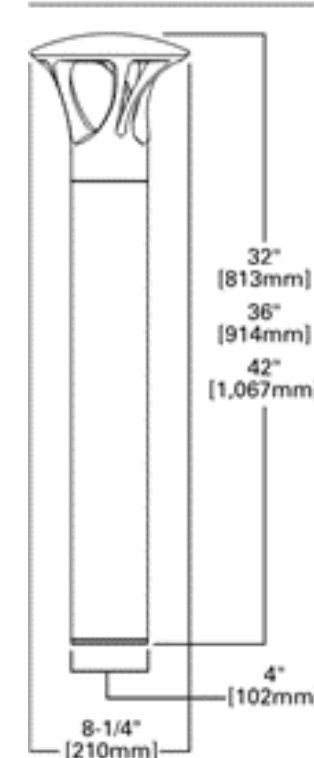
Full cut-off pole mounted LED luminaires with dark bronze finish will be utilized. Lighting will utilize photometric distributions to minimize quantity while maximizing illumination uniformity at grade. An average maintained illumination value of 11 lux will be provided with a max:min target ratio of 12:1.

Bottom of pole mounted luminaires will be 6 meters above finished grade. Height of fixtures will help keep light source out of normal viewing angles and improve uniformity.

Poles will utilize raised concrete bases for car, snow removal, and lawn maintenance protection. Luminaires will be controlled dusk-to-dawn by photocell with the ability to dim by time clock between midnight and 5am. Dimming protocols will be coordinated and approved by site security, but will never dim greater than 50%.



### DIMENSIONS



Full cut-off bollard lights will be utilized that match the styling of pole mounted fixtures.



Full cut-off pole mounted lights will be utilized with a comfort optic diffuse lens to mitigate glare for pedestrians and motorists.





The Hospital as viewed during the evening from the northwest including the existing mature trees of the escarpment in the foreground, Main Plaza and Pavilion at the center and the Main Concourse and Entrance flanked by Towers A and B beyond.





## Main Entry

Lighting will be utilized to assist intuitive way-finding by providing accent lighting along the architectural colonnade at the main entry. Recessed down lights in the canopy and architectural soffit will graze the vertical surfaces of the wood columns. Post-top, pedestrian scaled, full cut-off 4m tall luminaires will be utilized along sidewalks and at all crosswalks. Bollards and bench seating with integrated lights will provide a contemplative ambiance to areas of respite.

The drop-off sidewalk area will be illuminated to an average maintained value of 53 lux with a max:min target ratio of 10:1. Lighting will be controlled dusk-to-dawn by photocell.

## Sidewalks

Full cut-off pole post top mounted LED luminaires with dark bronze finish will be utilized. Lighting will utilize type II or type III photometric distributions to minimize quantity while maximizing illumination uniformity at grade. An average maintained illumination value of 11 lux will be provided with a max:min target ratio of 12:1.

The luminaires will utilize a flat diffuse lensed bottom to obscure direct view of LED sources. The top of fixture will be 4 meters above finished grade. Height of fixtures will help keep light source out of normal viewing angles and improve uniformity while providing a pedestrian-scaled intimacy to walking paths. Poles utilize raised concrete bases for snow removal, and lawn maintenance protection.