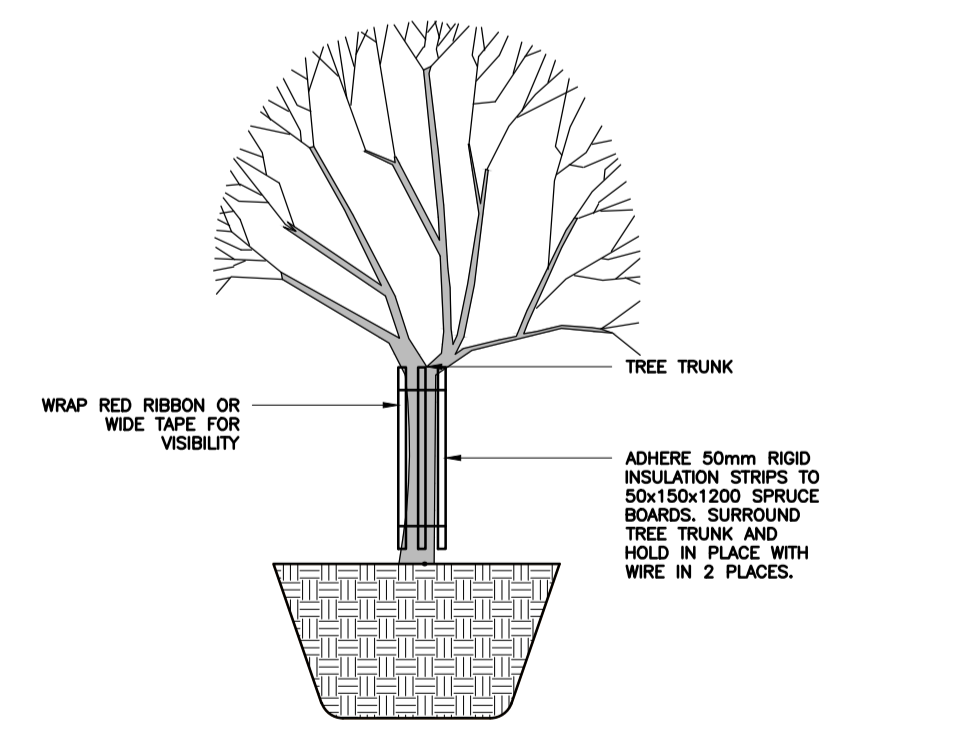
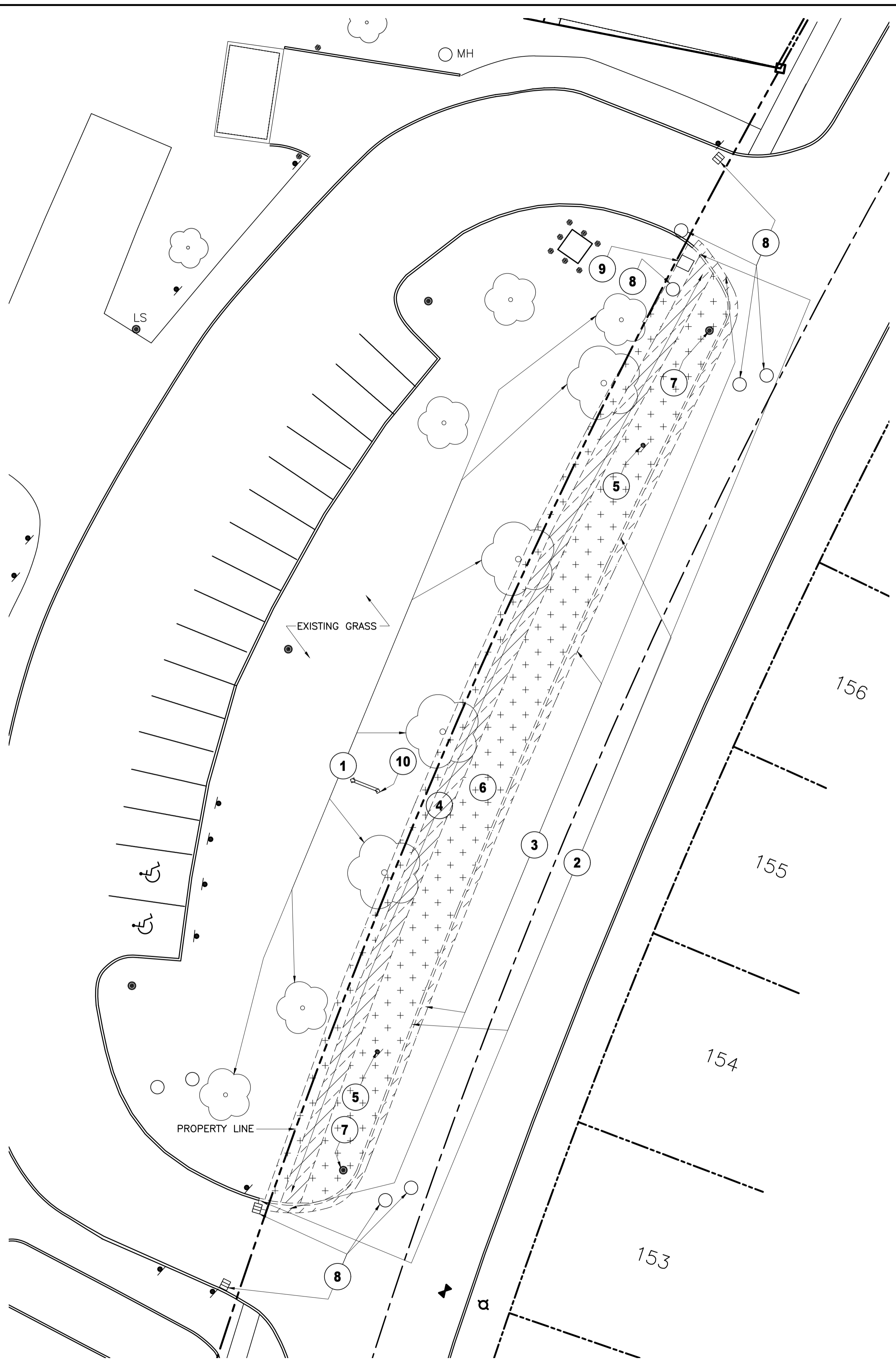


1 KEY PLAN
A1 1:750

DRAWING LEGEND	DEMOLITION NOTES
REMOVE EXISTING ASPHALT PAVING	1 EXISTING TREES TO BE PROTECTED FROM DAMAGE FOR DURATION OF WORK. REFER TO DETAIL.
REMOVE EXISTING CONCRETE SIDEWALK	2 REMOVE EXISTING CONCRETE CURB
REMOVE EXISTING TOPSOIL AND SOD	3 REMOVE EXISTING ASPHALT ALONG CONCRETE CURB. ALSO REFER TO CIVIL DRAWINGS.
PROPERTY LINE	4 REMOVE EXISTING CONCRETE SIDEWALK AND GRANULAR BASE
CENTRELINE OF ROAD	5 REMOVE EXISTING METAL POST AND SIGN
	6 REMOVE EXISTING GRASS AND TOP SOIL AS REQUIRED TO COMPLETE NEW WORK
	7 EXISTING LIGHT STANDARD TO REMAIN
	8 EXISTING HYDRO KIOSK TO REMAIN
	9 EXISTING MANHOLE/CATCH BASIN
	10 EXISTING SCHOOL SIGN



3 TYP. TREE PROTECTION DETAIL
A1 1:50



2 DEMOLITION PLAN
A1 1:200



1	0	22/12/02	ISSUED FOR SITE PLAN CONTROL
---	---	----------	------------------------------

LES IDÉES, CONCEPTS, DISPOSITIONS ET PLANS MONTRÉS OU REPRÉSENTÉS PAR CE DESSIN APPARTIENNENT À EDWARD J. CUHACI AND ASSOCIATES ARCHITECTS INC. ET ONT ÉTÉ CRÉÉS, ET DÉVELOPPÉS POUR ÊTRE UTILISÉS DANS LE CADRE DU PRÉSENT PROJET. ILS NE DOIVENT PAS ÊTRE UTILISÉS À D'AUTRES FINS NI COMMUNIQUÉS À QUI QUE CE SOIT SANS LA PERMISSION ÉCRITE DE EDWARD J. CUHACI AND ASSOCIATES ARCHITECTS INC.

L'ARCHITECTE DÉCLINE TOUTE RESPONSABILITÉ DÉCOULANT DE PROBLÈMES FAISANT SUITE AU NON RESPECT DES PLANS ET DEVIS OU DE L'INTENTION DU CONCEPT QU'ILS TRANSMETTENT, OU DE TOUTS PROBLÈMES POUVANT RÉSULTER DU DÉFAUT DE TIERS D'OBTENIR OU DE SUIVRE LES INSTRUCTIONS DE L'ARCHITECTE RELATIVEMENT AUX ERREURS, OMISSIONS, INCOHÉRENCES, AMBIGUITÉS OU CONTRADICTIONS ALLÉGUÉES.

L'ENTREPRENEUR DOIT VÉRIFIER TOUTES LES DIMENSIONS SUR PLACE ET INFORMER L'ARCHITECTE DE TOUT ÉCART AVANT LE DÉBUT DES TRAVAUX. NE PAS MESURER LES DESSINS À L'ÉCHELLE.

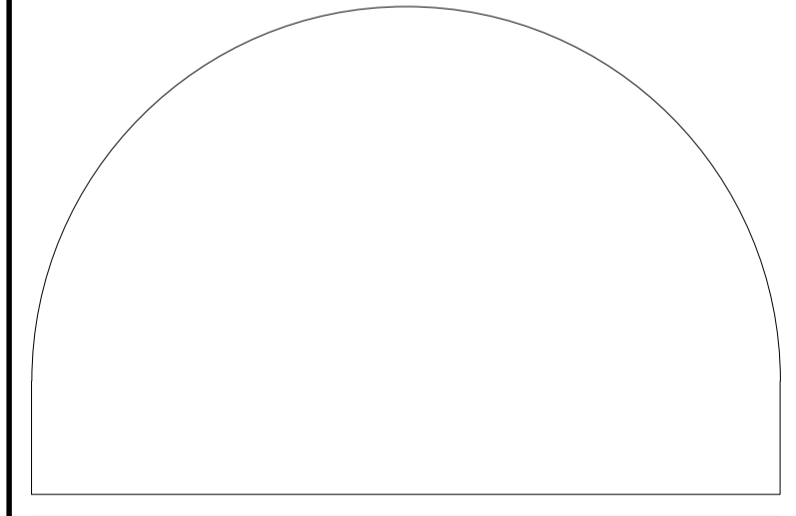
ALL IDEAS, DESIGNS, ARRANGEMENTS, AND PLANS INDICATED OR REPRESENTED BY THIS DRAWING ARE OWNED BY AND THE PROPERTY OF EDWARD J. CUHACI AND ASSOCIATES INC. AND WERE CREATED, EVOLVED, AND DEVELOPED FOR USE ON AND IN CONNECTION WITH THE SPECIFIED PROJECT. NONE OF THE IDEAS, DESIGNS, ARRANGEMENTS OR PLANS SHALL BE USED BY OR DISCLOSED TO ANY PERSON, FIRM, OR CORPORATION FOR ANY PURPOSE WHATSOEVER WITHOUT THE WRITTEN PERMISSION OF EDWARD J. CUHACI AND ASSOCIATES INC.

THE ARCHITECT WAIVES ANY AND ALL RESPONSIBILITY AND LIABILITY FOR PROBLEMS WHICH ARISE FROM FAILURE TO FOLLOW THESE PLANS, SPECIFICATIONS, AND THE DESIGN INTENT THEY CONVEY, OR FOR PROBLEMS WHICH ARISE FROM OTHERS' FAILURE TO OBTAIN AND/OR FOLLOW THE ARCHITECT'S GUIDANCE WITH RESPECT TO ANY ERRORS, OMISSIONS, INCONSISTENCIES, AMBIGUITIES OR CONFLICTS WHICH ARE ALLEGED.

CONTRACTOR TO VERIFY ALL DIMENSIONS AND NOTIFY THE ARCHITECT OF ANY DISCREPANCIES BEFORE WORK COMMENCES. DO NOT SCALE DRAWINGS

TRUE NORTH PLAN NORTH

ONTARIO ASSOCIATION OF ARCHITECTS
LICENSE 6193



EDWARD J CUHACI & ASSOCIATES ARCHITECTS Inc.
171 Slater St, Suite 100, Ottawa, Ontario, K1P 5H7
Fax: (613) 236-1944 Telephone: (613) 236-7135 E-mail: info@cuhaci.com

PROJECT TITLE/TITRE DU PROJET
STITTSTVILLE PUBLIC SCHOOL DROP OFF LANE
40 GRANITE RIDGE DRIVE
STITTSTVILLE, ON

OTTAWA-CARLETON DISTRICT SCHOOL BOARD
133 GREENBANK ROAD
NEPEAN, ON

DRAWING TITLE/TITRE DU DESSIN
KEY PLAN & DEMOLITION PLAN

SCALE ÉCHELLE	AS SHOWN	PROJ. No 2233	ISSUE No 1	REV. No 0
DRAWN BY DESSINE PAR	SL	DRAWING/DESSIN		
CHECKED BY VÉRIFIÉ PAR	XF	A1		
DATE	NOVEMBER 2022	ACAD FILE/FICHER: 2233-A1.DWG		

Plot Date: 02/12/2022 Plot Time: 11:05:45 AM Plot By: DALE SWAIN
 Plot Stamp For EAC Use Only
 Printer: DWG TO PDF PLOT
 Page Setup: