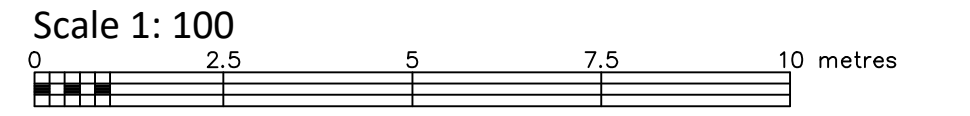


LOTS 5, 6 AND 7 REGISTERED PLAN 194250 CITY OF OTTAWA

FARLEY, SMITH & DENIS SURVEYING LTD. 2020



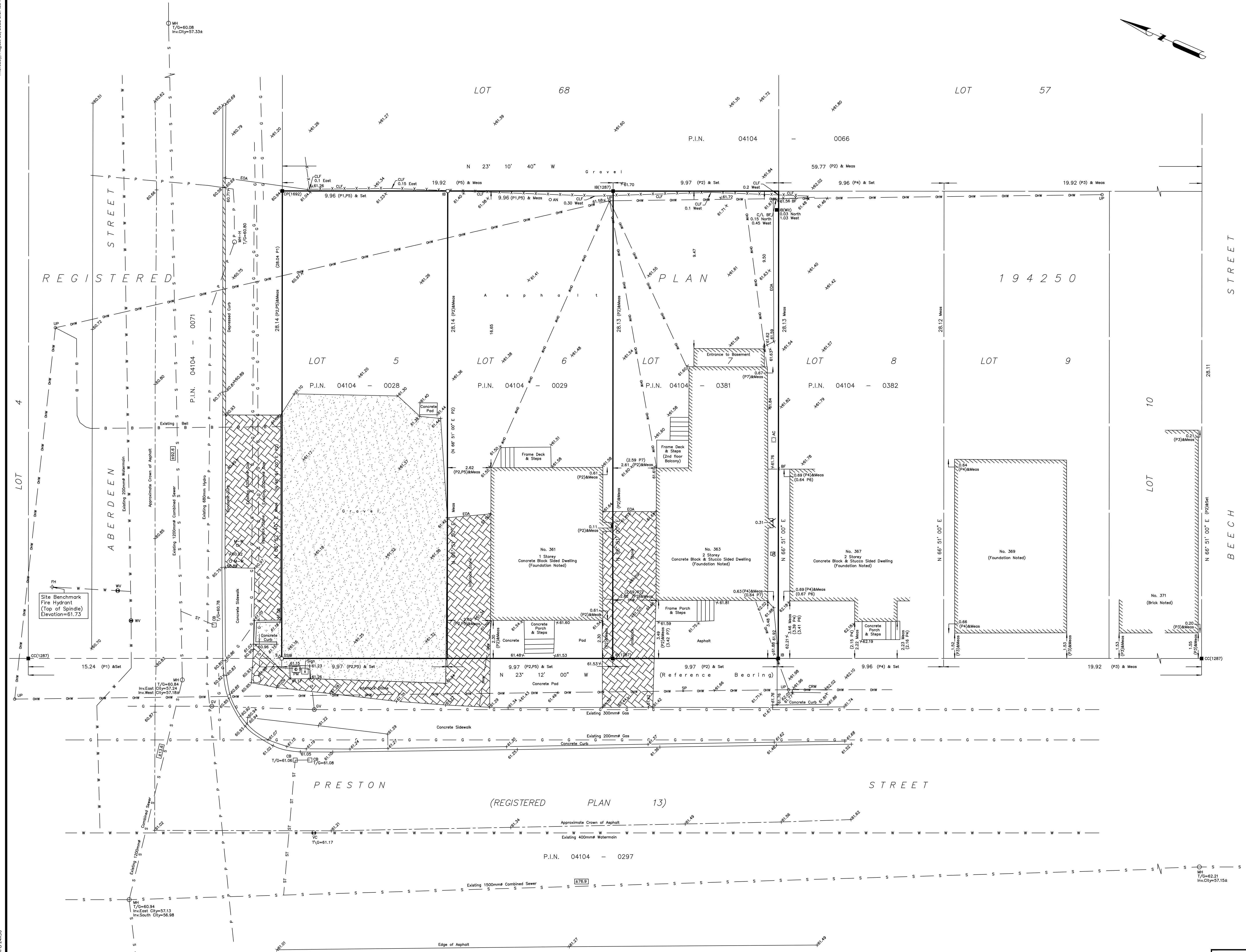
Metric Note Distances and coordinates on this plan are in metres and can be converted to feet by dividing by 0.3048.

Bearing Note Bearings are astronomic and are referred to the northeasterly limit of Preston Street having a bearing of N23°12'00"W as shown on Registered Plan 194250.

Elevation Notes 1. Elevations shown are geodetic and are referred to Geodetic Datum CGVD-1928 :1978. (FSD File No. 276-08) 2. It is the responsibility of the user of this information to verify that the job benchmark has not been altered or disturbed and that its relative elevation and description agrees with the information shown on this drawing.

Utility Notes 1. This drawing cannot be accepted as acknowledging all of the utilities and it will be the responsibility of the user to contact the respective utility authorities for confirmation. 2. Only visible surface utilities were located. 3. Underground utility data derived from City of Ottawa utility sheet reference: F-09-12, 14785-8, 14785-9, 14785-11, 9046, 3009 sheets 4 & 5 of 16. 4. Sanitary and storm sewer grades and inverts were compiled from: Field measurement & City of Ottawa. 5. A field location of underground plant by the pertinent utility authority is mandatory before any work involving breaking ground, probing, excavating etc.

Notes & Legend Denotes Survey Monument Planted, Survey Monument Found, Iron Bar, Cut Cross, Concrete Pin, Witness Measured, Registered Plan 194250, Plan by (1287) dated August 11, 2004 (Job No. 305-04), Plan by (1287) dated April 22, 1999 (Job No. 43-99), Plan by (JDB) dated August 12, 2002, Plan by (1692) dated August 28, 2008 (Job No. 276-08), Plan by (McR) dated February 13, 1959, Plan by (F&M) dated September 26, 1974, Maintenance Hole (Unidentified), Valve Chamber (Watermain), Underground Sanitary Sewer, Underground Water, Underground Power, Underground Gas, Underground Bell, Overhead Wires, Utility Pole, Anchor, Catch Basin, Fire Hydrant, Water Valve, Water Stand Post, Gas Valve, Gas Meter, Parking Meter, Sign, Air Conditioner, Chain Link Fence, Board Fence, Centreline, Location of Elevations, Top of Concrete Curb Elevation, Property Line, Monitoring Well, Invert, Invert per City Plans, Top of Grate, Concrete Retaining Wall, Edge of Asphalt.



ASSOCIATION OF ONTARIO LAND SURVEYORS PLAN SUBMISSION FORM 2130188 THIS PLAN IS NOT VALID UNLESS IT IS AN EMBOSSED ORIGINAL COPY ISSUED BY THE SURVEYOR In accordance with Regulation 1016, Section 29 (3).

WARNING NO PERSON MAY COPY, REPRODUCE, DISTRIBUTE OR ALTER THIS PLAN IN WHOLE OR IN PART WITHOUT THE WRITTEN PERMISSION OF FARLEY, SMITH & DENIS SURVEYING LTD. © FARLEY, SMITH & DENIS SURVEYING LTD., 2020.

Surveyor's Certificate I certify that: 1. This survey and plan are correct and in accordance with the Surveys Act, the Surveyors Act and the Regulations made under them. 2. The survey was completed on the 13th day of July, 2020.

Date Daniel Robinson Ontario Land Surveyor

FARLEY, SMITH & DENIS SURVEYING LTD. ONTARIO LAND SURVEYORS CANADA LAND SURVEYORS 190 COLONNADE ROAD, OTTAWA, ONTARIO K2E 7J5 TEL. (613) 727-8226 FAX. (613) 727-1826