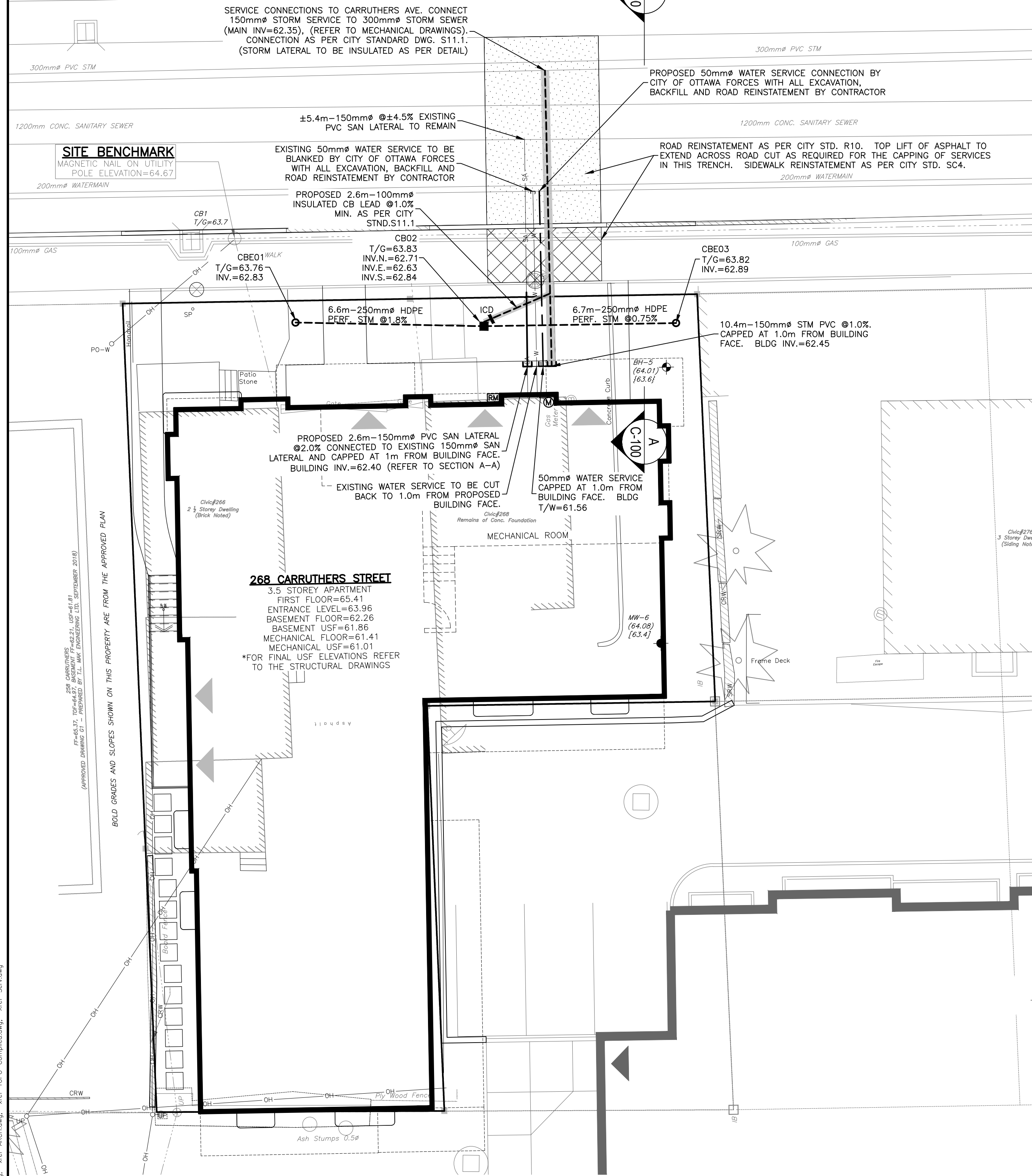
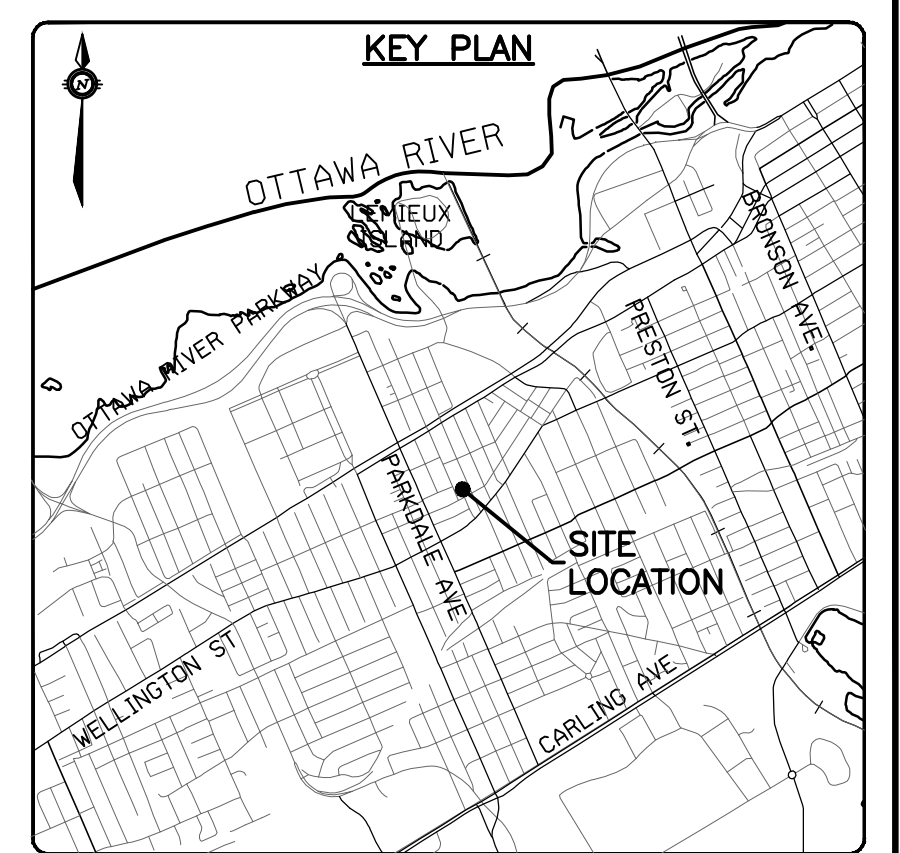
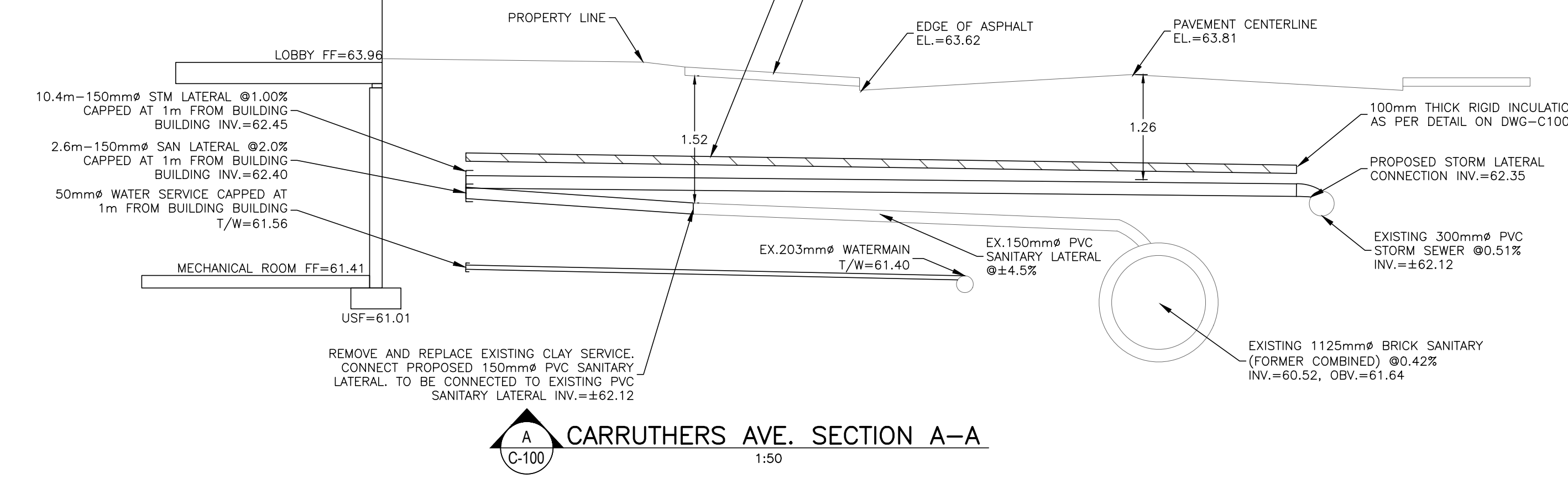
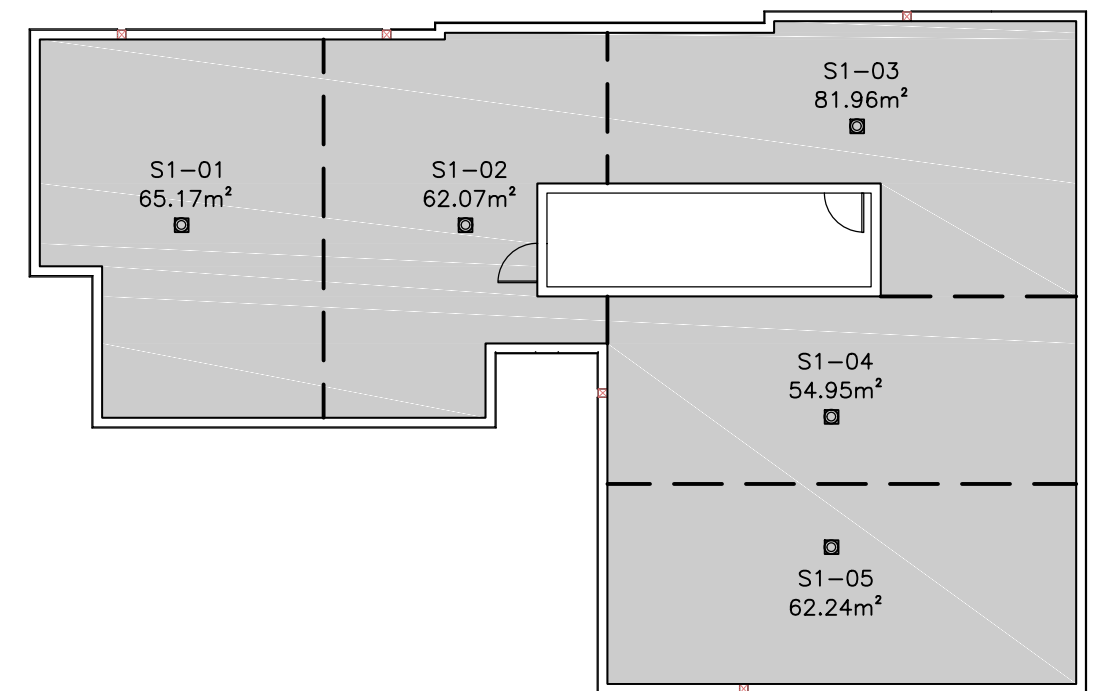


- NOTES:**
- CONTRACTOR TO CONFIRM THE DIAMETER OF THE EXISTING PVC SANITARY LATERAL AND MATCH EXISTING.
 - SANITARY FIXTURES IN BASEMENT WILL REQUIRE PUMPING TO SANITARY LATERAL.



CARRUTHERS AVENUE

ARMSTRONG STREET



ROOF PONDING				
AREA #	100 YEAR PONDING DEPTH (mm)	WEIR TYPE	NO. OF WEIRS PER DRAIN	WEIR POSITION
S1-01	134	WATTS ACCUTROL	1	2 - CLOSED
S1-02	133	WATTS ACCUTROL	1	2 - CLOSED
S1-03	137	WATTS ACCUTROL	1	2 - CLOSED
S1-04	131	WATTS ACCUTROL	1	2 - CLOSED
S1-05	133	WATTS ACCUTROL	1	2 - CLOSED

PROPOSED SEWER TABLE										
STRUCTURE	U/S	D/S	TYPE	INVERT ELEV (m)		NOMINAL DIA. (mm)	LENGT H (m)	Type	Class	Comment
				U/S	D/S					
CB01	CB02	STM	62.830	62.710	250	6.60	HDPE	BOSS 2000	PERFORATED S29	
CB03	CB02	STM	62.890	62.840	250	6.70	HDPE	BOSS 2000	PERFORATED S29	
CB02	WYE CONN.	STM	62.630	62.410	100	2.60	PVC	DR35	SOLID	
BLDG. CAP	EX. MAIN CONN.	STM	62.450	62.350	150	10.40	PVC	DR35	SOLID	
BLDG. CAP	EX. MAIN CONN.	SAN	62.400	62.120	150	2.60	PVC	DR35	SOLID	

STRUCTURE TABLE										
STRUCTURE NUMBER	TYPE	LID ELEV (m)	INVERT IN (m) and DIA (mm)		INVERT OUT (m) and DIA (mm)		STRUCTURE			Comment
			U/S	D/S	U/S	D/S	SIZE	REFERENCE	FRAME	
CB01	STORM	63.76	62.830	(S) (250)	62.830	(S) (250)	250 DIA	City of Ottawa S31	Ottawa S31	Ottawa S31
CB02	STORM	63.83	62.710	(N) (250)	62.830	(E) (100)	100 DIA	OPSD 705 010	OPSD 400 020	OPSD 400 020
CB03	STORM	63.82	62.840	(S) (250)	62.890	(N) (250)	250 DIA	City of Ottawa S31	Ottawa S31	Ottawa S31

CAUTION
THE POSITION OF ALL POLE LINES, CONDUITS, WATERMANS, SEWERS AND OTHER UNDERGROUND AND OVERGROUND UTILITIES AND STRUCTURES IS NOT NECESSARILY SHOWN ON THE CONTRACT DRAWINGS, AND WHERE SHOWN, THE ACCURACY OF THE POSITION OF SUCH UTILITIES AND STRUCTURES IS NOT GUARANTEED. BEFORE STARTING WORK, DETERMINE THE EXACT LOCATION OF ALL SUCH UTILITIES AND STRUCTURES AND ASSUME ALL LIABILITY FOR DAMAGE TO THEM.

REV	REVISION DESCRIPTION	DATE	BY	APPD	REV	REVISION DESCRIPTION	DATE	BY	APPD
1	ISSUED FOR SITE PLAN APPROVAL	09/11/22	SAB	BMT					

McCORMICK PARK DEVELOPMENTS
1600 LAPERRIERE AVENUE, SUITE 205
OTTAWA, ON. K1M 2H9
613.421.1515

exp.
exp Services Inc.
1-813-688-1899 | T-613-225-7330
2625 Carleton Place, Unit 100
Ottawa, ON K2B 8H6
Canada
www.exp.com

PROJECT
266-268 CARRUTHERS
177-179 ARMSTRONG STREET
OTTAWA, ONTARIO.

TITLE
SITE SERVICING PLAN

PROJECT NO.
OTT-22014656-AG

SURVEY
FWM/FSD

DATE
JUNE 2022

DRAWING NO.
C100