

PLAN OF SURVEY OF
**PART OF LOT 15
 CONCESSION 10
 GEOGRAPHIC TOWNSHIP OF HUNTLEY
 CITY OF OTTAWA**
 Surveyed by Annis, O'Sullivan, Vollebek Ltd.

Scale 1 : 500

Metric
 DISTANCES AND COORDINATES SHOWN ON THIS PLAN
 ARE IN METRES AND CAN BE CONVERTED TO FEET BY
 DIVIDING BY 0.3048.

PART 1
 PLAN 4R - 11444
 PIN 04540 - 0003

PART 2
 PLAN 4R - 11444
 PIN 04540 - 0002

PART 3
 PLAN 4R - 14824
 PIN 04540 - 0390

PART 4
 PLAN 4R - 14824
 PIN 04540 - 0389

PART 5
 PLAN 4R - 14824
 PIN 04540 - 0391

Surveyor's Certificate
 I CERTIFY THAT:
 1. This survey and plan are correct and in accordance with the Surveys Act and the Surveyors Act and the regulations made under them.
 2. The survey was completed on the 7th day of January, 2020.

Date: Jan 8/20

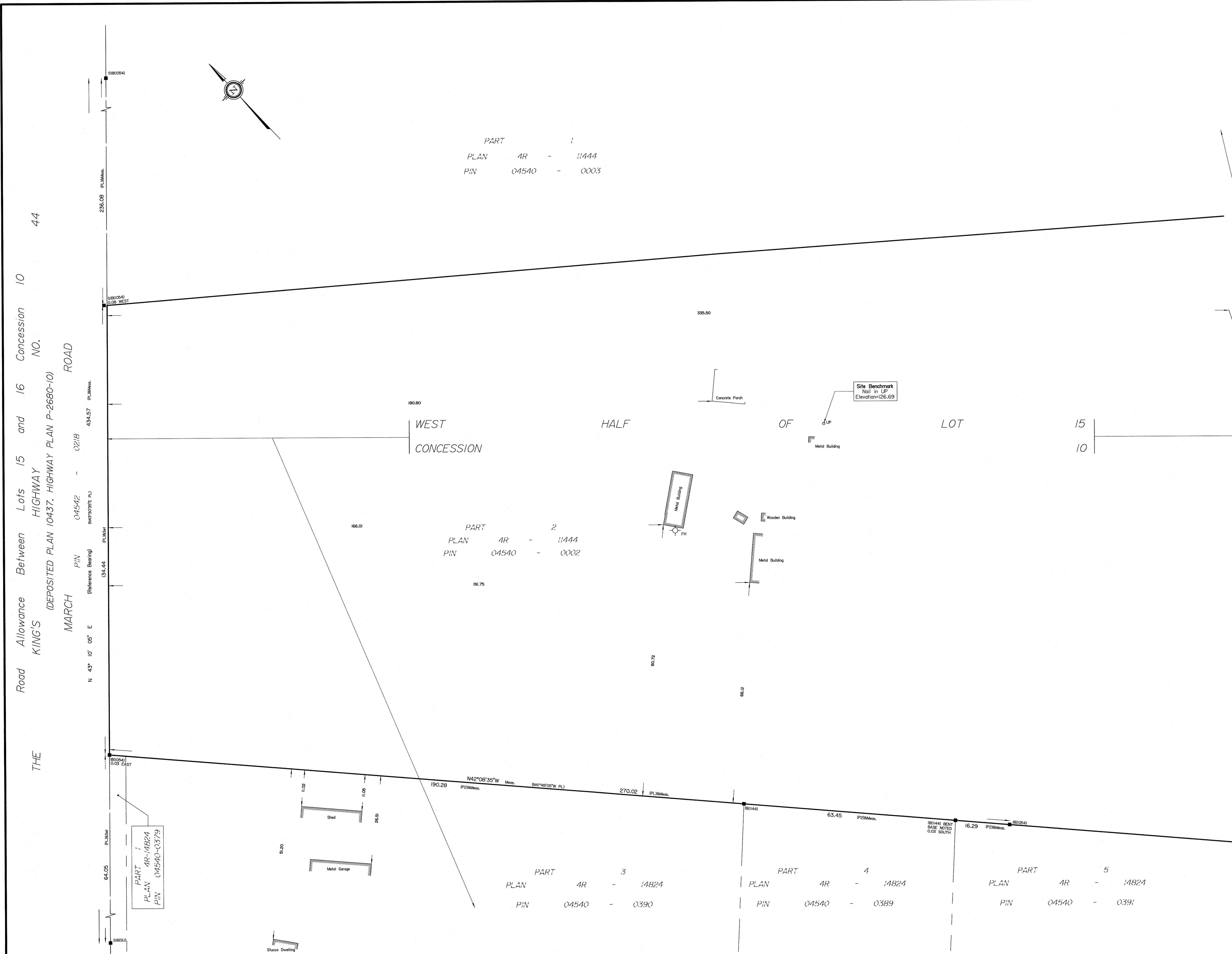
 T. Hartwick
 Ontario Land Surveyor

- Notes & Legend**
- Denotes Survey Monument Planted
 - Denotes Survey Monument Found
 - SIB Standard Iron Bar
 - SSIB Short Standard Iron Bar
 - IB Iron Bar
 - (SU) Source Unknown
 - (WT) Witness
 - (AOS) Annis, O'Sullivan, Vollebek Ltd.
 - Meas. Measured
 - (PL) Plan 4R-11444
 - (P2) Plan 4R-14824
 - FH Fire Hydrant

Bearings are grid, derived from Can-Net 2016 Real Time Network GPS observations, MTM Zone 9 (76°30' West Longitude) NAD-83 (original).
 For bearing comparisons, a rotation of 0°20'30" counter clockwise was applied to bearings on Plan PL.

ASSOCIATION OF ONTARIO
 LAND SURVEYORS
 PLAN SUBMISSION FORM
 2104118

 THIS PLAN IS NOT VALID UNLESS
 IT IS AN EMBOSSED ORIGINAL
 COPY ISSUED BY THE SURVEYOR
 In accordance with
 Regulation 1026, Section 29 (3).



THE ROAD ALLOWANCE BETWEEN LOTS 15 AND 16 CONCESSION 10 NO. 44
 KING'S HIGHWAY (DEPOSITED PLAN 10437, HIGHWAY PLAN P-2680-10)
 MARCH ROAD
 N 43° 10' 05" E
 P/PIN 04542 (Reference Bearing)
 P/PIN 04540 (Reference Bearing)
 P/PIN 04540 (Reference Bearing)
 P/PIN 04540 (Reference Bearing)
 P/PIN 04540 (Reference Bearing)