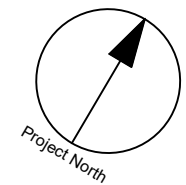


LEGEND :

MH1
0.16 | 0.88

AREA NUMBER
RUNOFF COEFFICIENT
AREA IN HECTARES



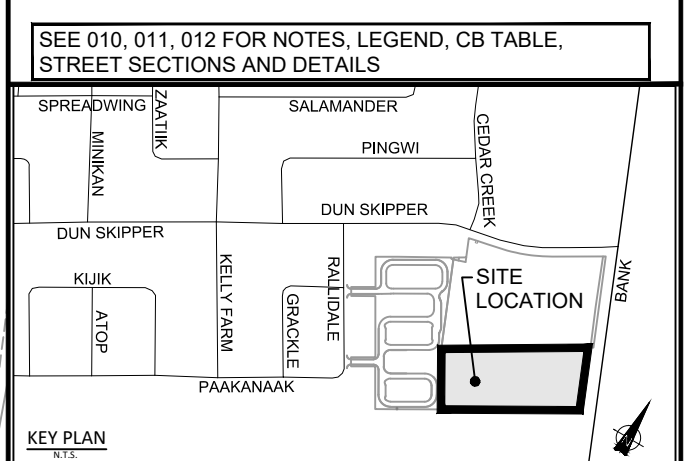
CLIENT
PATHWAYS SOUTH REGIONAL INC.
1737 WOODWARD DRIVE, OTTAWA, ON

COPYRIGHT
This drawing has been prepared solely for the intended use, and any reproduction or distribution for any purpose other than that authorized by IBI Group is forbidden. Written dimensions shall have precedence over scaled dimensions. Contractors shall verify and be responsible for all dimensions and conditions on the job, and IBI Group shall be informed of any variations from the dimensions and conditions shown on the drawing. Shop drawings shall be submitted to IBI Group for general conformance before proceeding with fabrication.

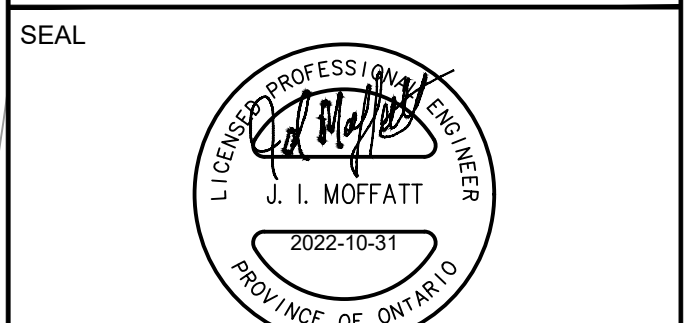
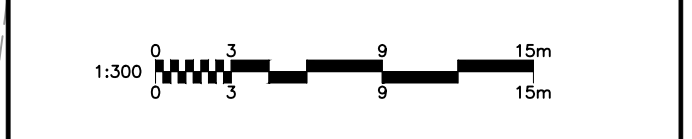
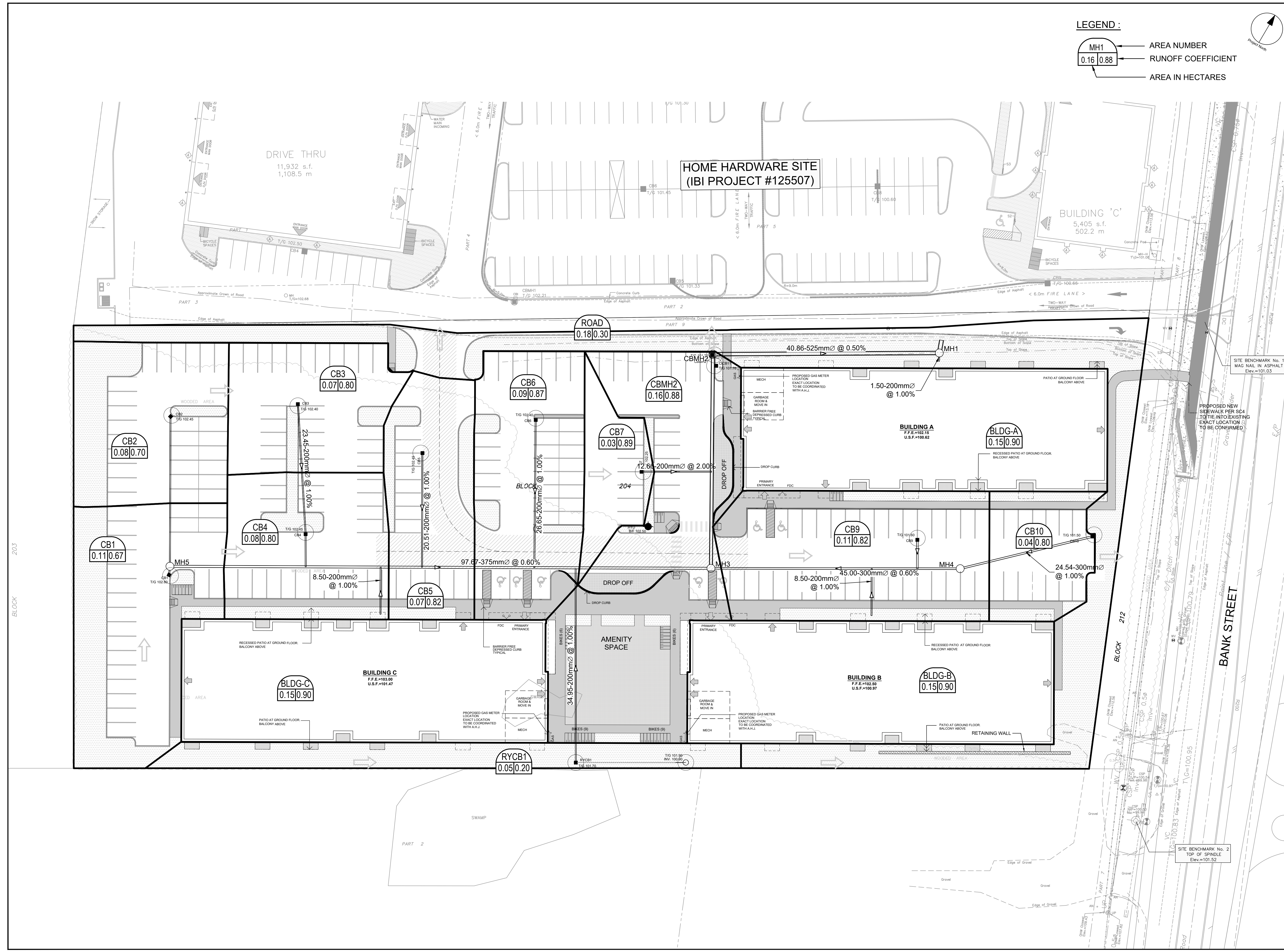
IBI Group Professional Services (Canada) Inc.
is a member of the IBI Group of companies.

ISSUES

No.	DESCRIPTION	DATE
1	SUBMISSION NO. 1 FOR CITY REVIEW	2022-06-03
2	SUBMISSION NO. 2 FOR CITY REVIEW	2022-08-26
3	SUBMISSION NO. 3 FOR CITY REVIEW	2022-10-31
4		
5		
6		
7		
8		



CONSULTANTS



IBI GROUP
400 - 333 Preston Street
Ottawa ON K1S 5M4 Canada
tel 613 225 1311 fax 613 225 5868
ibigroup.com

PROJECT
4840 BANK STREET

PROJECT NO:
137175

DRAWN BY: **M.M.** CHECKED BY: **S.E.L.**

PROJECT MGR: **D.C.** APPROVED BY: **J.I.M.**

SHEET TITLE
STORM DRAINAGE AREA PLAN

SHEET NUMBER
C-500 ISSUE
3

CITY FILE No. D07-12-22-0097

CITY PLAN No. xxxxx