

Chamberlain Architect Services Limited

4671 Palladium Way (Unit 1)
Burlington, Ontario, L7M 0W9
CANADA

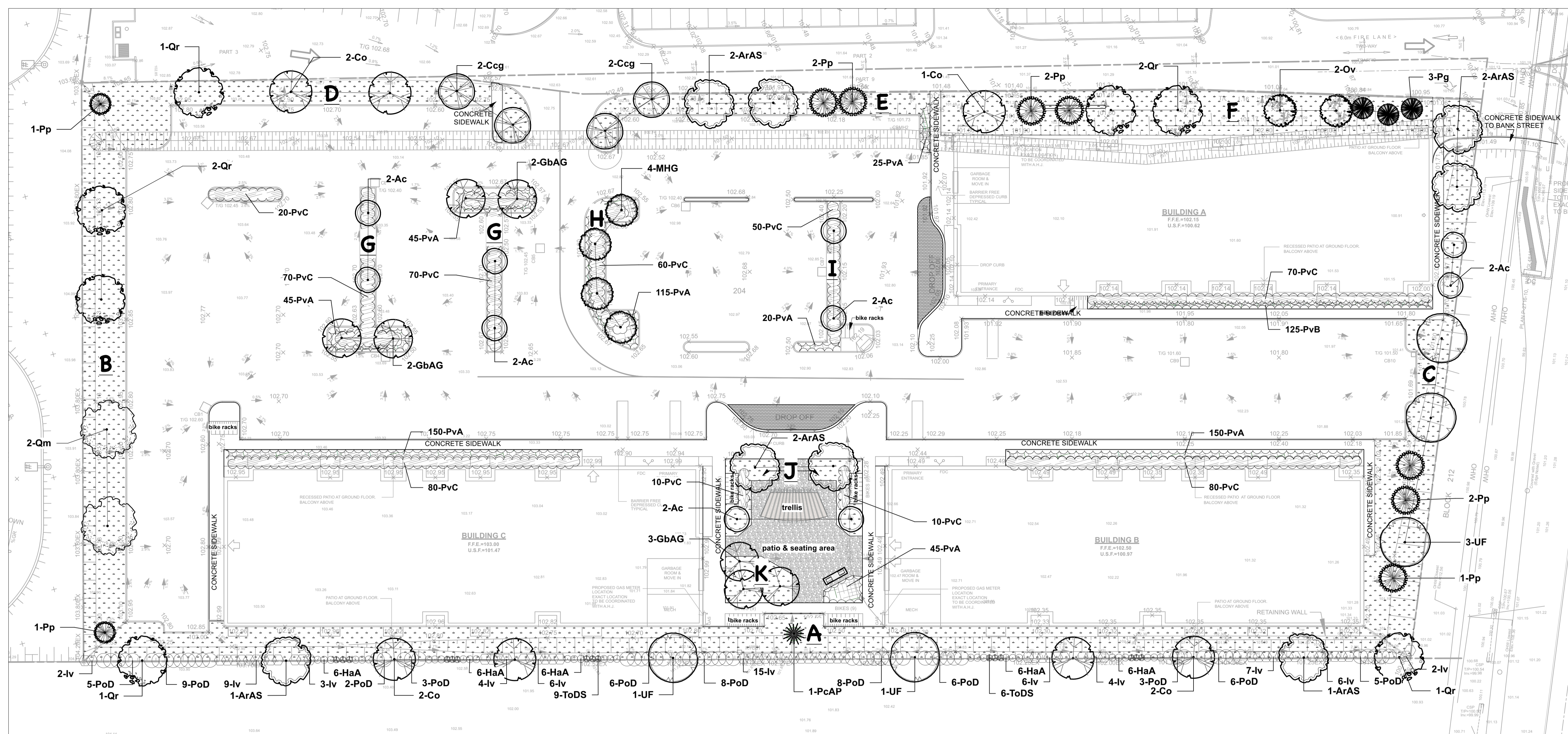
Phone: 905.631.7777

www.chamberlainPD.com

IBI GROUP
400 - 333 Preston Street
Ottawa ON K1S 5N4 Canada
tel 613 225 1311 fax 613 225 9869
ibigroup.com

6		
5		
4		
3	Re-Issued for Site Plan Control	22/11/02
2	Re-Issued for Site Plan Control	22/09/08
1	Issued for Site Plan Control	22/06/03

NUMBER	DATE	INITIALS
DESIGNED BY: CONDUYR	DESIGNED BY: VERREER	
A. Ahmed / M. Ruhland	M. Ruhland	
DRAWN BY: DESHAI	SCALE: ECHELLE	
T. Frost	1:300	



Landscape / Planting Plan

Soil Volume Area, Tree Quantity and Size	Tree Quantity	OTTAWA Target Soil Volume (m ³)	Design Soil Volume	Soil Adequacy percentage
AREA A - 13 large trees, 8 Coniferous trees (typical) plant bed (650 sq m x 0.45 ave metre deep)	13	225.0	292.5	130.00%
AREA B - 4 large trees, 5 Coniferous trees (typical)	6	102.0	157.5	154.41%
AREA C - 5 large trees, 2 small trees, 3 Coniferous trees (typical) plant bed (310 sq m x 0.45 ave metre deep)	9	144.0	139.5	96.88%
AREA D - 4 large trees, 2 small trees (typical) plant bed (170 sq m x 0.45 ave metre deep)	5	78.0	76.5	98.08%
AREA E - 2 large trees, 2 small trees, 2 Coniferous trees (typical) plant bed (95 sq m x 0.9 ave metre deep)	6	90.0	85.5	95.00%
AREA F - 3 large trees, 2 medium trees, 6 Coniferous trees (typical) plant bed (325 sq m x 0.45 ave metre deep)	10	165.0	146.3	88.64%
AREA G - 2 Medium trees, 2 Small Trees plant bed (48 sq m x 1 ave metre deep)	4	54.0	48.0	88.89%
AREA H - 3 Small trees plant bed (55 sq m x 1 ave metre deep)	4	48.0	55.0	114.58%
AREA I - 2 Small trees plant bed (20 sq m x 1 ave metre deep)	2	24.0	20.0	83.33%
AREA J - 1 medium tree, 1 Ornamental trees plant bed (22 sq m x 1 ave metre deep)	2	24.0	22.0	91.67%
AREA K - 3 medium trees plant bed (40 sq m x 1 ave metre deep)	3	45.0	40.0	88.89%

Trees in large grassed areas show an average depth of 45cm planting soil to average out depths of grassed areas and rootballs as per City of Ottawa detail L1. Trees in islands and other confined spaces show a depth of 90-100cm planting soil.

ID	Qty	Botanical Name	Common Name	Scheduled Size	Remarks
TREES					
ArAS	8	Acer rubrum 'Autumn Spire'	Red Maple	50mm caliper	WB Staked
Ac	10	Amelanchier canadensis	Serviceberry	45mm caliper	WB, Staked
Co	7	Celtis occidentalis	Hackberry	90mm caliper	WB Staked
Ccg	4	Crataegus crus-galli inermis	Thornless Cockspur Hawthorn	45mm caliper	WB, Staked
GbAG	7	Ginkgo biloba 'Autumn Gold'	Autumn Gold Maidenhair Tree	60mm caliper	WB Staked
MHG	4	Malus x 'Harvest Gold'	Harvest Gold Crabapple	50mm caliper	WB, Staked
Ov	2	Ostrya virginiana	Ironwood	50mm caliper	WB Staked
Pg	3	Picea glauca	White Spruce	200cm ht	WB, Staked
Pp	9	Picea pungens	Colorado Spruce	200cm ht	WB, Staked
PcAP	1	Pinus cembra 'Algonquin Pillar'	Algonquin Pillar Swiss Stone Pine	200cm ht	W.B. Staked
Qm	2	Quercus macrocarpa	Burr Oak	70mm caliper	WB, Staked
Qr	7	Quercus rubra	Northern Red Oak	60mm caliper	WB Staked
UF	5	Ulmus 'Frontier'	Frontier Elm	70mm caliper	WB Staked
SHRUBS					
HaA	30	Hydrangea arborescens 'Annabelle'	Annabelle Hydrangea	2 gallon pot	0.9m o.c.
Iv	64	Ilex verticillata	Winterberry	125cm ht.	Potted
PoD	61	Physocarpus opulifolius 'Diablo'	Diablo Ninebark	50cm ht.	Potted
ToDS	15	Thuja occidentalis 'Degroot's Spire'	Degroot's Spire Arborvitae	175cm ht	175cm ht
PERENNIALS					
PvB	125	Flowering perennials for shade		150mm pot	
PvA	595	Flowering Perennials for sun		150mm pot	
PvC	520	Ornamental Grasses		150mm pot	

Perennial mix
PvA – Flowering perennials for sun, min 2 varieties of each: Shasta Daisy vars, Daylily (reds, yellows), Coneflower, Black-eyed Susan, Speedwell
PvB – Flowering perennials for shade, min 2 varieties of each: Daylily, Coral Bells (burgundies), Hosta, Cranesbill Geranium, Ostrich Fern
PvC – Ornamental Grasses (tall in centre): Karl Foerster Reed Grass, Heavy Metal Switch Grass, Blue Fescue

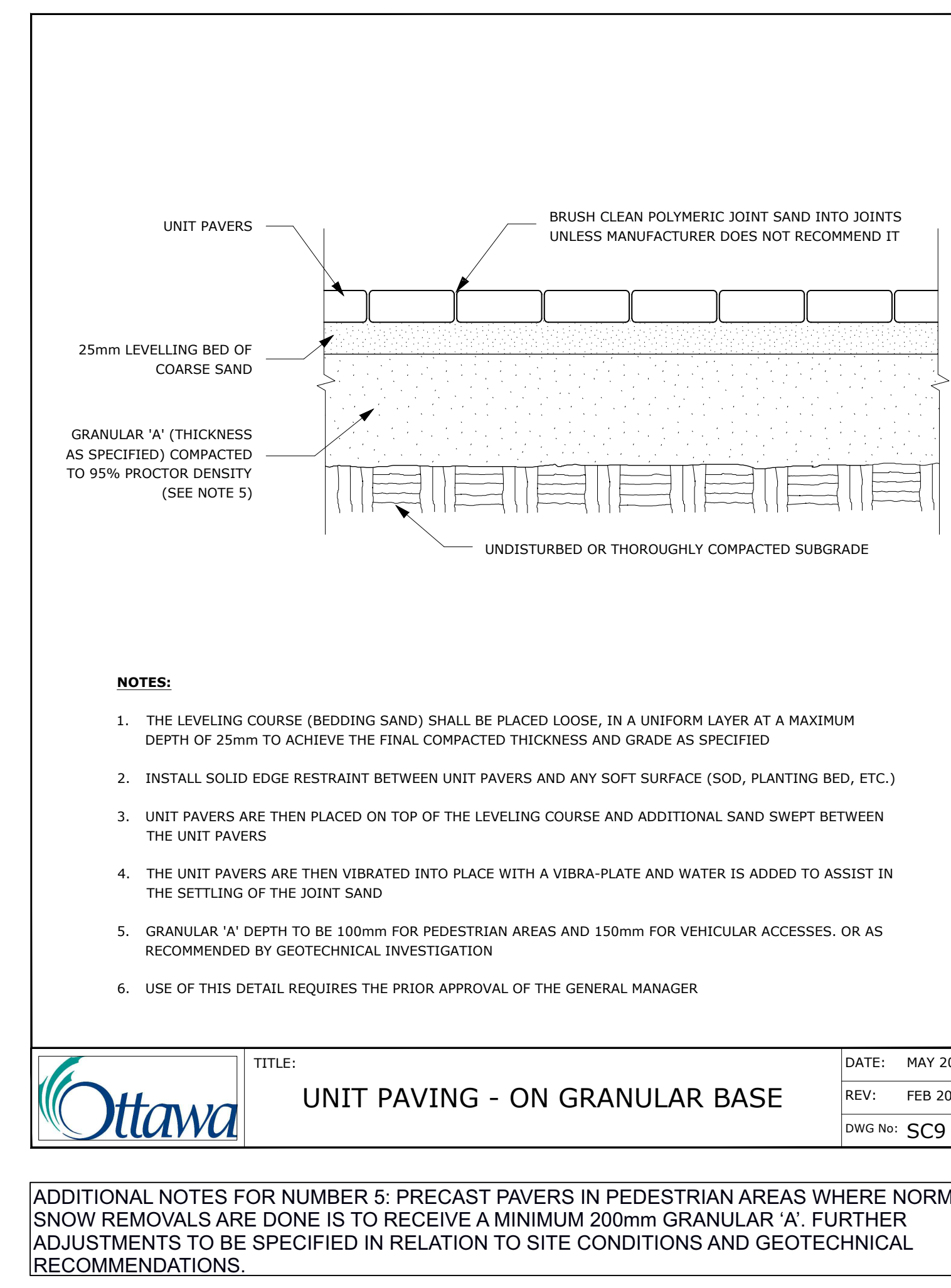
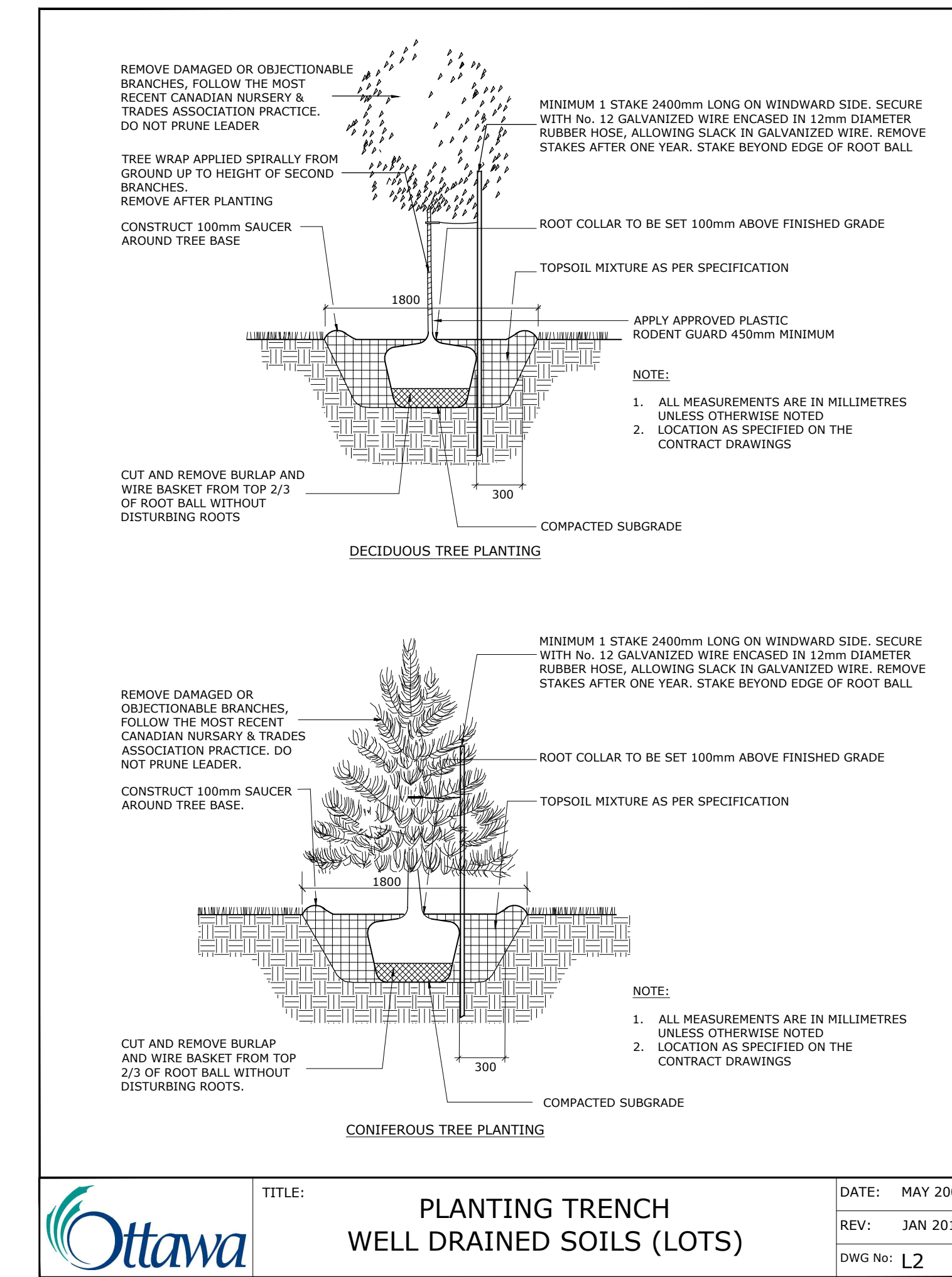
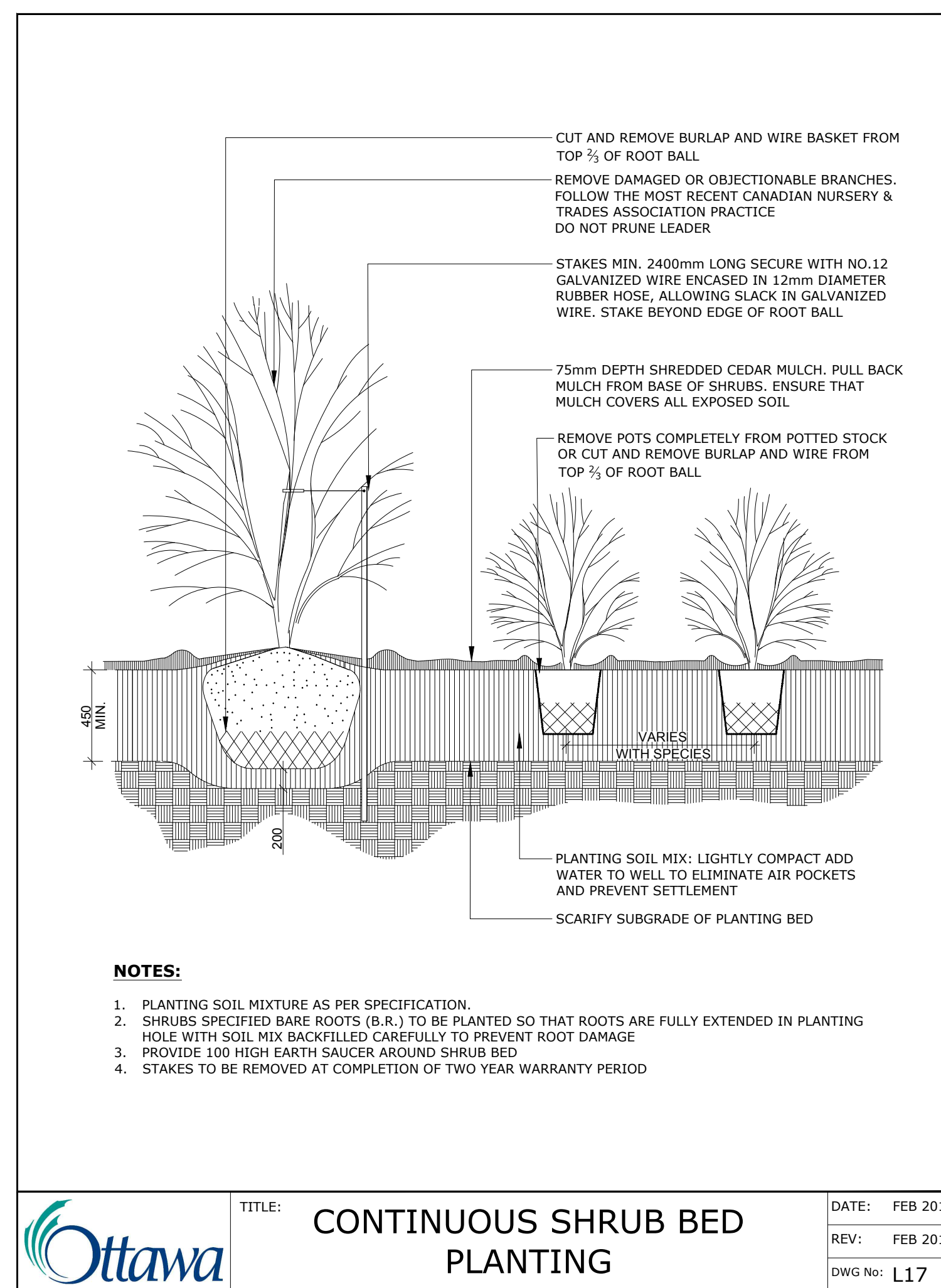
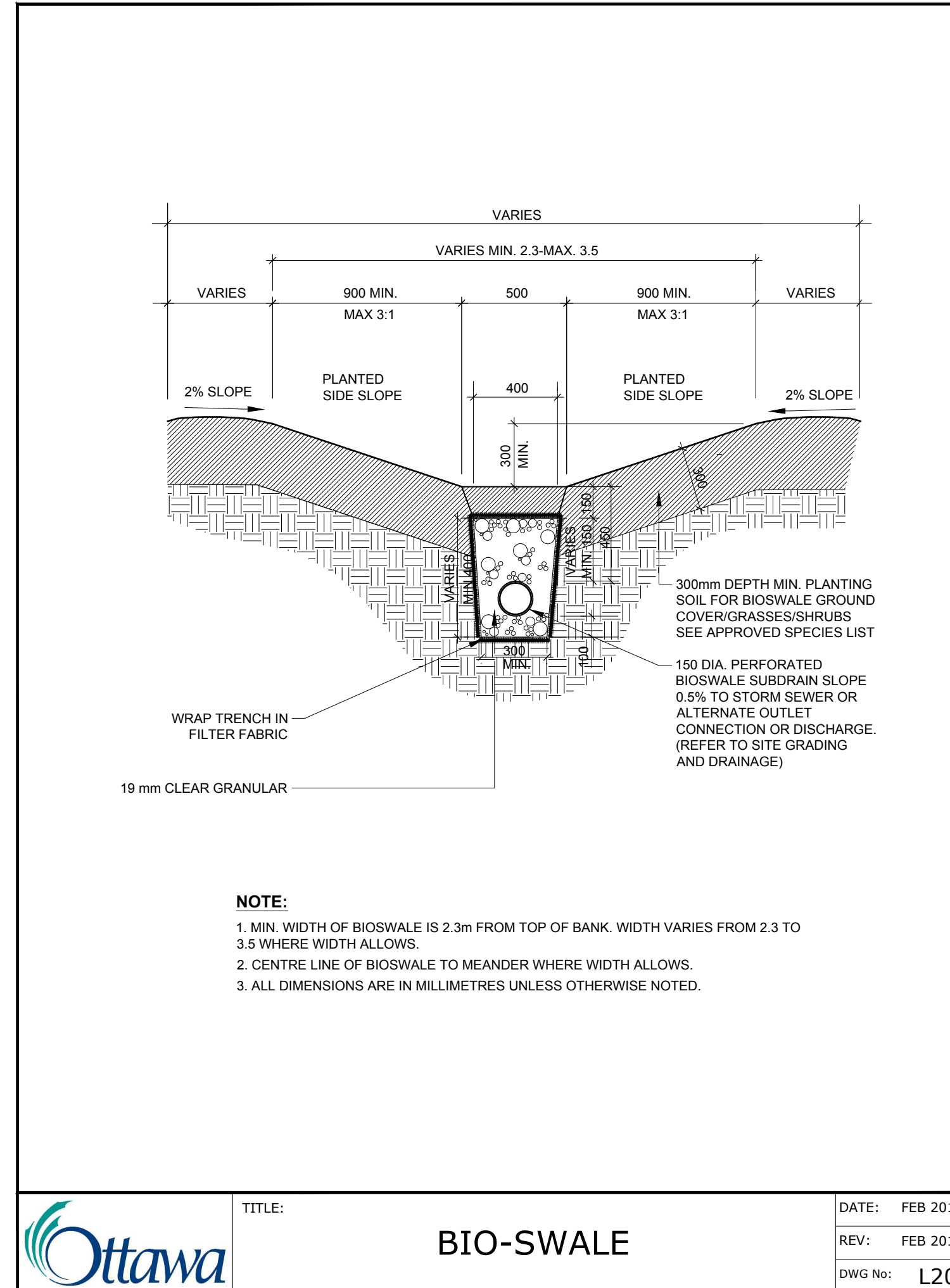
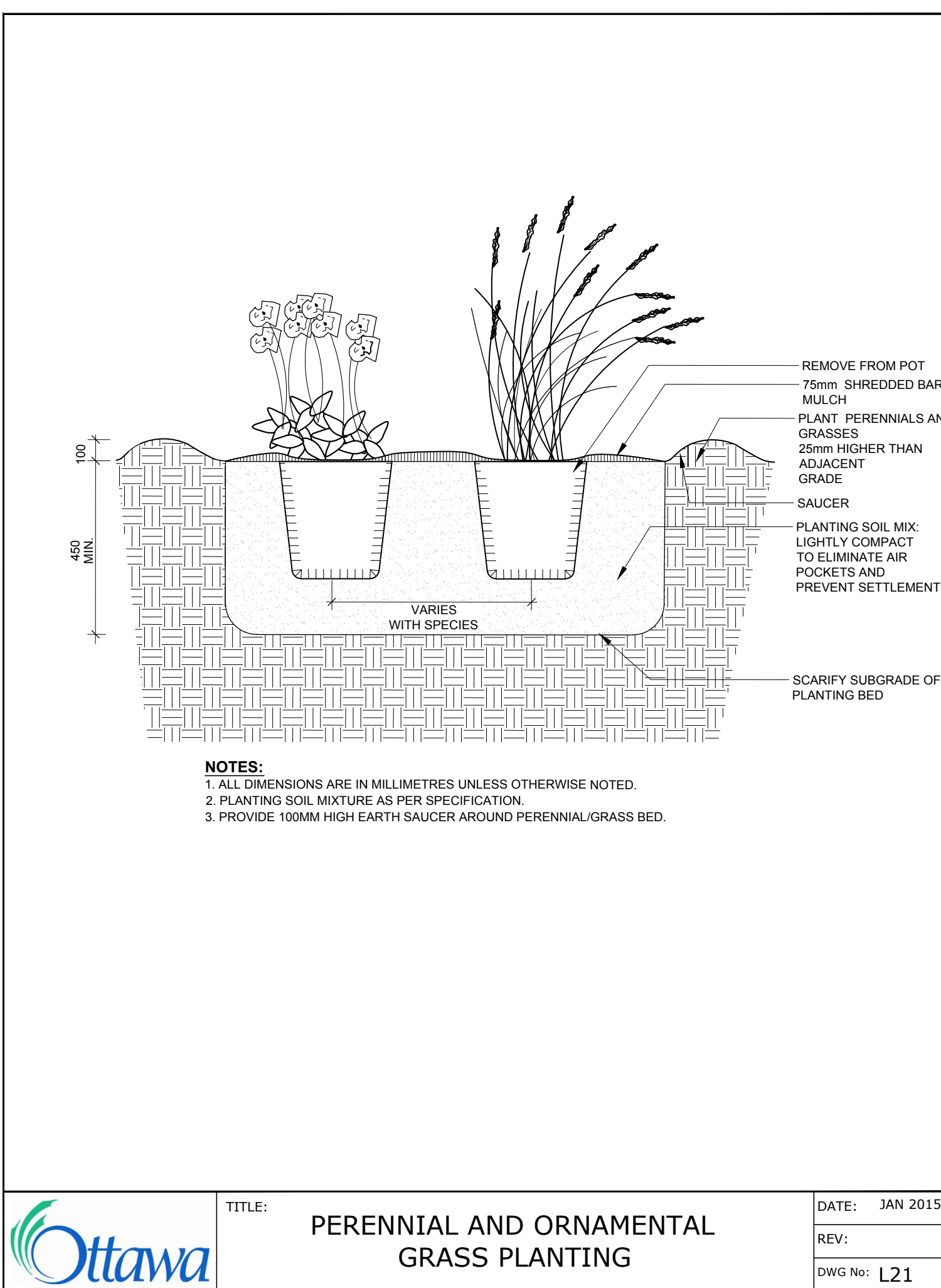
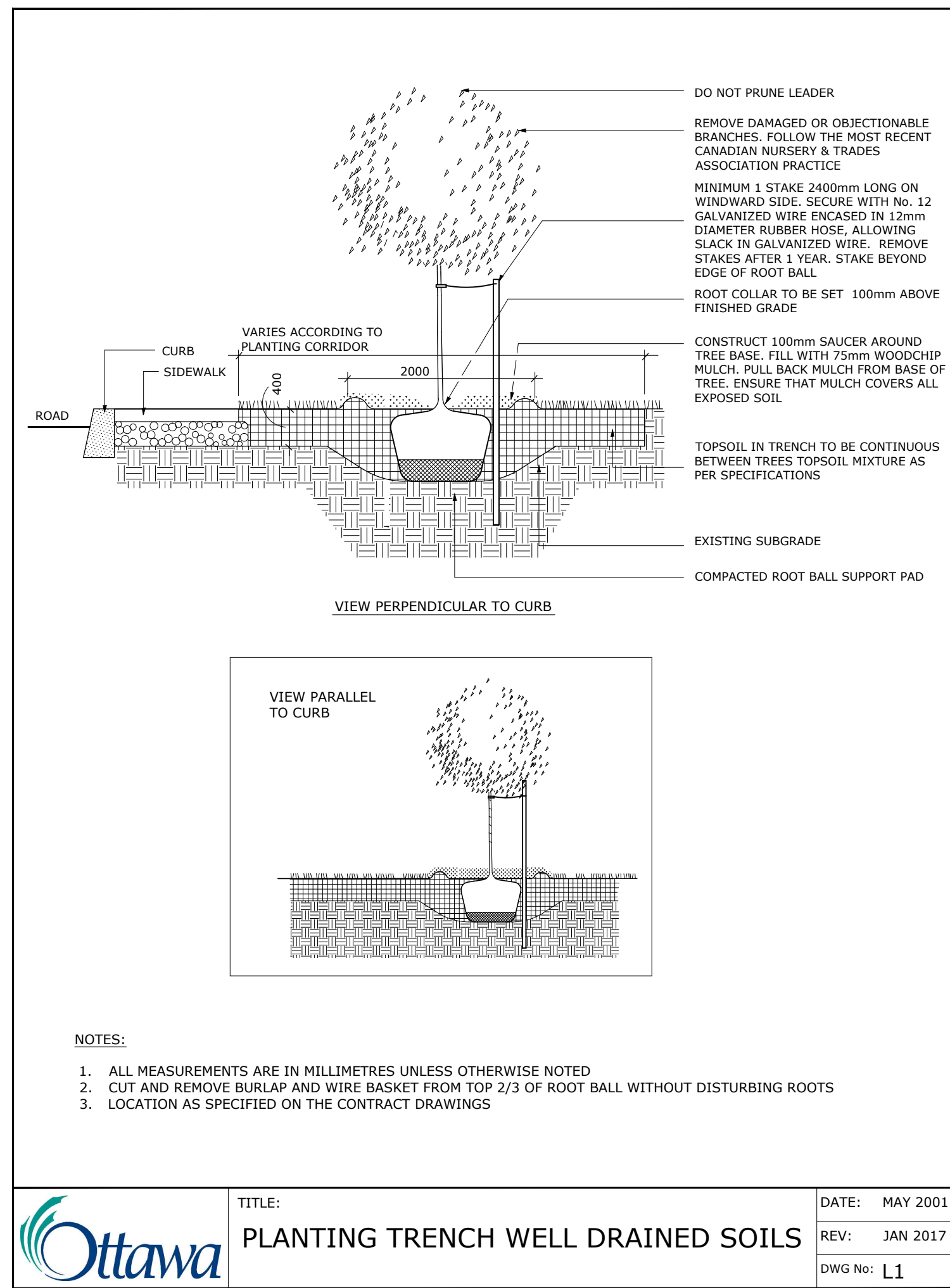
LEGEND	
	DROP-OFF AREA PAVERS
	AMENITY AREA PAVERS
	SOD
	FLOWERING PERENNIALS
	ORNAMENTAL GRASSES
	SOIL VOLUME AREA IDENTIFIER

NOTE:
THIS PLAN IS ISSUED FOR SITE PLAN CONTROL SUBMISSION ONLY. ADDITIONAL DETAILING AND SPECIFICATIONS ARE REQUIRED PRIOR TO TENDERING OR CONSTRUCTION.
SERVICING INFORMATION SHOWN AS REFERENCE ONLY. REFER TO CIVIL DRAWINGS FOR SITE SERVICING AND GRADING.

GENERAL NOTES
 .1 All general site information and conditions compiled from existing plans, surveys and consultant's field notes. Report all discrepancies prior to any work. No responsibility is born by the Consultant for unknown subsurface conditions.
 .2 The location of the utilities is approximate only, and the exact location should be determined by consulting the municipal authorities and utility companies concerned. The Contractor shall prove the location of utilities and shall be responsible for adequate protection from damage.
 .3 All dimensions shown are to be verified on site prior to any construction. No deviations are to be made from the layouts as shown on this plan without prior consultation with the Landscape Architect and Owner.
 .4 Obtain approval of the Consultant(s) for granular base and layout of all pavement areas prior to construction.
 .5 Stake planting locations and receive approval of Landscape Architect, prior to excavation of any planting pits. No substitutions of plant material shall be made without prior approval of the Landscape Architect.
 .6 Where clay is encountered proper drainage must be ensured in trees/shrub pits, prior to planting. Have method approved by Landscape Architect.
 .7 Maintain positive surface runoff through the entire construction period.
 .8 Reinstate all areas and items damaged as a result of construction activities.

ARCHITECT	CONSULTANT
CONSULTANT	CONSULTANT
PROJECT / LOCATION	
4840 BANK STREET	
4840 BANK STREET OTTAWA, ONTARIO	
DRAWING	
LANDSCAPE / PLANTING PLAN	
PROJECT NO.	SHEET NO.
22-1686	L-01

NOTES:
TREES ARE TO BE INSTALLED AS PER CITY STANDARD DETAILS; SOIL VOLUME AS PER BELOW NOTES AND MATRIX ON SHEET L-01.
 - STANDARD TREE SOIL VOLUMES QUANTITIES INCLUDE THE TOP 900-1000mm OF SOIL/EXISTING SUBSOIL LAYER TO CALCULATE TOTAL SOIL VOLUMES REQUIRED BY THE CITY OF OTTAWA FOR SUSTAINABLE TREE GROWTH. WHERE LARGER SOFT AREAS ARE AVAILABLE, THE TOP 400-500mm LAYER IS USED TO CALCULATE SOIL VOLUMES.
 - WHERE EXISTING MATERIAL BELOW THE SPECIFIED TOPSOIL IS NOT CONDUCTIVE TO TREE GROWTH, AN ADDITIONAL LAYER OF PLANTING MEDIUM IS TO BE INSTALLED BELOW SPECIFIED TOPSOIL DEPTH TO OBTAIN THE SOIL VOLUME DEPTH REQUIRED.
 - REFER TO SOIL VOLUME MATRIX AND PLANS FOR AREA WHERE TREE SOIL VOLUMES ARE REQUIRED.



PATHWAYS SOUTH REGIONAL INC.
 1737 WOODWARD DRIVE
 OTTAWA, ONTARIO

Ruhland & Associates Ltd
 landscape architecture • urban design • site planning
 Ph 613-224-4744 Fx 613-242-1331 info@rala.ca www.rala.ca

Chamberlain Architects
 Constructors
 Managers

Chamberlain Architect Services Limited
 4671 Palladium Way (Unit 1)
 Burlington, Ontario, L7M 0W9
 CANADA
 Phone: 905.631.7777
 www.chamberlainPD.com

IBI GROUP
 400 - 333 Preston Street
 Ottawa ON K1S 5N4 Canada
 tel 613 225 1311 fax 613 225 9869
 ibigroup.com

6		
5		
4		
3	Re-issued for Site Plan Control	22/11/02
2	Re-issued for Site Plan Control	22/09/08
1	Issued for Site Plan Control	22/06/03

DESIGNED BY / CONSULTANT: A. Ahmed / M. Ruhland
 CHECKED BY / VERIFIED: M. Ruhland
 DRAWN BY / DESIGNED: T. Frost
 SCALE: ECHELLE: NTS

ARCHITECT	CONSULTANT
CONSULTANT	CONSULTANT

PROJECT / LOCATION
 4840 BANK STREET
 4840 BANK STREET
 OTTAWA, ONTARIO

DRAWING
DETAILS
 SHEET NO.
L-02
 PROJECT NO.
 22-1686

CITY FILE No. D07-12-22-0097

CITY PLAN No. xxxxx