

LES IDEES, CONCEPTS, DISPOSITIONS ET PLANS MONTRÉS OU REPRÉSENTÉS PAR CE DESSIN APPARTIENNENT À EDWARD J. CUHACI AND ASSOCIATES ARCHITECTS INC. ET ONT ÉTÉ CRÉÉS ET DÉVELOPPÉS POUR ÊTRE UTILISÉS DANS LE CADRE DU PRÉSENT PROJET. ILS NE DOIVENT PAS ÊTRE UTILISÉS À D'AUTRES FINS NI COMMUNIQUÉS À QUI QUE CE SOIT SANS LA PERMISSION ÉCRITE DE EDWARD J. CUHACI AND ASSOCIATES ARCHITECTS INC.

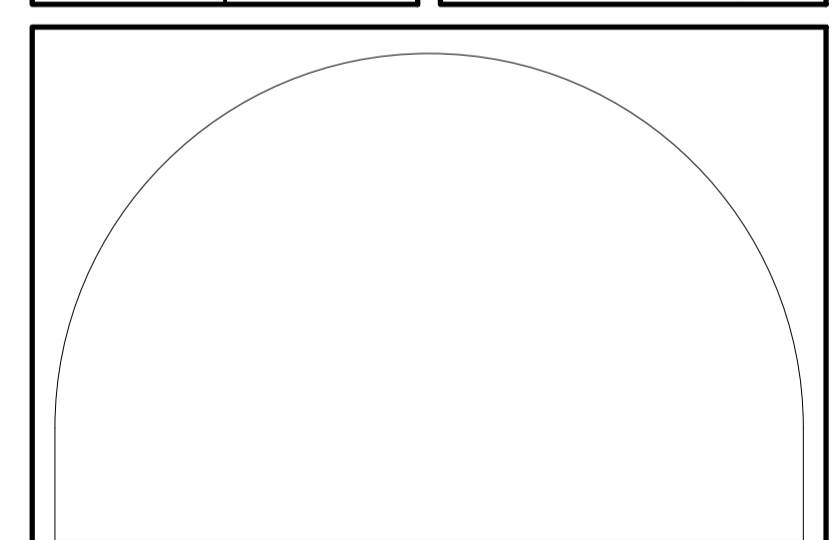
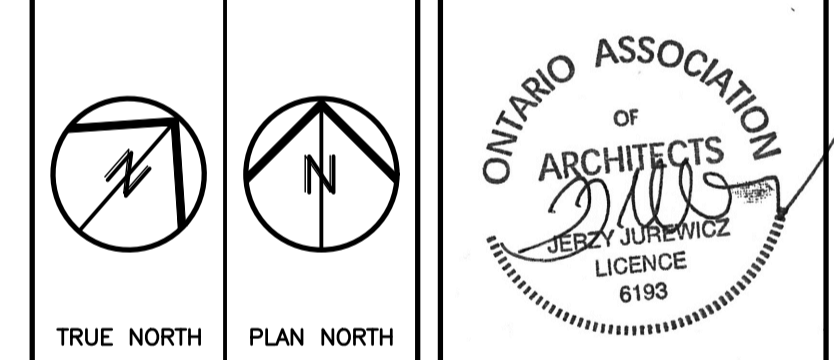
L'ARCHITECTE DÉCLINE TOUTE RESPONSABILITÉ DÉCOULANT DE PROBLÈMES FAISANT SUITE AU NON-RESPECT DES PLANS ET DEVIS OU DE L'INTENTION DU CONCEPTEUR QU'ILS TRANSMETTENT OU DE TOUTS PROBLÈMES POUVANT RÉSULTER DU DÉFAUT DE TIERS D'OBTENIR OU DE SUIVRE LES INSTRUCTIONS DE L'ARCHITECTE RELATIVEMENT AUX ERREURS, OMISSIONS, INCOHÉRENCES, AMBIGUITÉS OU CONTRADICTIONS ALLÉGUÉES.

L'ENTREPRENEUR DOIT VÉRIFIER TOUTES LES DIMENSIONS SUR PLACE ET INFORMER L'ARCHITECTE DE TOUT ÉCART AVANT LE DÉBUT DES TRAVAUX. NE PAS MESURER LES DESSINS À L'ÉCHELLE.

ALL IDEAS, DESIGNS, ARRANGEMENTS, AND PLANS INDICATED OR REPRESENTED BY THIS DRAWING ARE OWNED BY AND THE PROPERTY OF EDWARD J. CUHACI AND ASSOCIATES INC. AND WERE CREATED, EVOLVED, AND DEVELOPED FOR USE ON AND IN CONNECTION WITH THE SPECIFIED PROJECT. NONE OF THE IDEAS, DESIGNS, ARRANGEMENTS OR PLANS SHALL BE USED BY OR DISCLOSED TO ANY PERSON, FIRM, OR CORPORATION FOR ANY PURPOSE WHATSOEVER WITHOUT THE WRITTEN PERMISSION OF EDWARD J. CUHACI AND ASSOCIATES INC.

THE ARCHITECT WAIVES ANY AND ALL RESPONSIBILITY AND LIABILITY FOR PROBLEMS WHICH ARISE FROM FAILURE TO FOLLOW THESE PLANS, SPECIFICATIONS, AND THE DESIGN INTENT THEY CONVEY, OR FOR PROBLEMS WHICH ARISE FROM OTHERS' FAILURE TO OBTAIN AND/OR FOLLOW THE ARCHITECT'S GUIDANCE WITH RESPECT TO ANY ERRORS, OMISSIONS, INCONSISTENCIES, AMBIGUITIES OR CONFLICTS WHICH ARE ALLEGED.

CONTRACTOR TO VERIFY ALL DIMENSIONS AND NOTIFY THE ARCHITECT OF ANY DISCREPANCIES BEFORE WORK COMMENCES. DO NOT SCALE DRAWINGS



EDWARD J. CUHACI & ASSOCIATES ARCHITECTS Inc.
171 Slater St, Suite 100, Ottawa, Ontario, K1P 5H7
Fax: (613) 236-1944 Telephone: (613) 236-7135 E-mail: info@cuhaci.com

PROJECT/TITRE DU PROJET
ÉCOLE SECONDAIRE CATHOLIQUE PAUL-DESMARAIS - ADDITION
5315 ABBOTT STREET EAST
OTTAWA, ON

CONSEIL DES ÉCOLES CATHOLIQUES DU CENTRE-EST
4000, RUE LABELLE, OTTAWA, ON K1J 1A1

DRAWING/TITRE DU DESSIN
SITE PLAN

SCALE	PROJ. No	ISSUE No	REV. No
ECHELLE	1:500	2219	1 0
DRAWN BY	DRAWING/DESSIN		
DESSINÉ PAR	S.R.		
CHECKED BY	J.J.		
VÉRIFIÉ PAR	A001		
DATE	JANUARY 2022		
FICHER ACAD FILE: 2219-A001_SPC.dwg			

GENERAL NOTES

- EXTENT OF CONTRACT IS LIMITED TO WITHIN PROPERTY EXCEPT WHERE SHOWN OTHERWISE.
- ALL WORK OUTSIDE PROPERTY LINE TO BE CONSTRUCTED TO CITY OF OTTAWA CONSTRUCTION STANDARDS.
- PARKING STALL SIZE: 2600mm x 5200mm
BARRIER FREE PARKING STALL: 3900mm x 5200mm
- FOR LANDSCAPE/PLANTING DETAILS SEE DRAWING AS PREPARED BY JBL.
- FOR SITE GRADING INFORMATION SEE GRADING & DRAINAGE DRAWING AS PREPARED BY WSP.
- FOR SITE SERVICES INFORMATION SEE SITE SERVICES DRAWING AS PREPARED BY WSP.
- FOR SOIL INVESTIGATION REPORT REFER TO REPORT PREPARED BY EXP SERVICES.
- SLOPES OF CONCRETE/PAVING AT DEPRESSED CURBS SHALL NOT EXCEED 5%.
- CONTRACTOR TO VERIFY ALL DIMENSIONS ON SITE AND REPORT ANY ERRORS TO THE ARCHITECT. CONTRACTOR TO COORDINATE WITH ALL DRAWINGS.
- FOR SITE SURVEY INFORMATION, SEE TOPOLOGICAL SURVEY DRAWING PREPARED BY ANNIS, O'SULLIVAN, VOLLEBEKK LTD.

SITE PLAN NOTES - EXISTING

- EXISTING TRANSFORMER
- EXISTING PLANTER
- EXISTING SECOND FLOOR OVERHANG OR CANOPY
- EXISTING GAS METER WITH CHAINLINK FENCE
- EXISTING HEAVY TIMBER BENCHES
- EXISTING BICYCLE PARKING 90 SPACES
- EXISTING GARBAGE ENCLOSURE
- EXISTING VEHICLE AIRLOCK
- EXISTING HEAT AND INFLATION UNIT
- EXISTING FENCED SERVICE EQUIPMENT YARD
- EXISTING EMERGENCY EXIT FROM DOME
- EXISTING LOADING SPACE
- EXISTING SCHOOL SIGN
- EXISTING CONCRETE STORAGE SHED
- EXISTING GATE POSTS
- EXISTING BASKET BALL BACKSTOPS
- EXISTING EASEMENT
- EXISTING FIRE ROUTE
- EXISTING DOME VESTIBULE
- EXISTING ASPHALT BICYCLE PATH
- EXISTING GRASS AREA
- EXISTING CONCRETE SIDE WALK

SITE PLAN NOTES - NEW

- NEW SECOND FLOOR OVERHANG OR CANOPY
- NEW FIRE ROUTE
- FUTURE PORTABLE CLASSROOM N.I.C.
- LINE OF FUTURE GRANULAR 'A' PAD FOR FUTURE PORTABLE CLASSROOMS
- NEW CURB RAMP WITH FLARED SIDES AND TACTILE SURFACE WALKING INDICATOR. REFER TO SITE DETAILS AND SPECIFICATIONS
- NEW CONCRETE SIDEWALK/CURB TO NEAREST CONTROL JOINT.

LEGEND

- BARRIER FREE PARKING
- BUILDING ENTRANCE/EXIT
- EBD EXISTING BOLLARD TO REMAIN
- EC EXISTING CONCRETE CURB TO REMAIN
- EDC EXISTING DEPRESSED CONCRETE CURB TO REMAIN
- ESMDC EXISTING SEMI-MOUNTABLE DEPRESSED CONCRETE CURB
- EXISTING CHAIN LINK FENCE TO REMAIN
- ROAD CENTER LINE
- FIRE ROUTE
- SET BACK LINE
- PROPERTY LOT LINE
- EASEMENT BOUNDARY
- EFR EXISTING FIRE ROUTE SIGN TO REMAIN
- EH/C EXISTING HANDICAPPED PARKING SIGN TO REMAIN
- ED/O EXISTING DROP-OFF SIGN TO REMAIN
- EW EXISTING ONE WAY SIGN TO REMAIN
- ENE EXISTING NO ENTRY SIGN TO REMAIN
- ELA EXISTING LOADING AREA SIGN TO REMAIN
- ETS EXISTING MISC. TRAFFIC SIGN TO REMAIN
- ELS EXISTING LIGHT STANDARD TO REMAIN
- SIB IRON BAR (REFER TO SURVEY)
- EFDC EXISTING FIRE DEPARTMENT CONNECTION TO REMAIN
- FDC NEW FIRE DEPARTMENT CONNECTION (REFER TO MECHANICAL)
- EFH EXISTING FIRE HYDRANT TO REMAIN
- EMH EXISTING MAN HOLE TO REMAIN (REFER TO CIVIL)
- ECB EXISTING CATCH BASIN TO REMAIN (REFER TO CIVIL)
- EFP EXISTING FLAG POLE TO REMAIN
- EUP EXISTING UTILITY POST
- EFHC EXISTING FIRE HOSE CABINET
- NCC NEW CONCRETE CURB
- DC NEW DEPRESSED CONCRETE CURB
- SMDC NEW SEMI-MOUNTABLE DEPRESSED CONCRETE CURB
- FR NEW FIRE ROUTE SIGN (EVERY 25 METRES)
- LA NEW LOADING AREA SIGN
- LS NEW LIGHT STANDARD
- FH NEW FIRE HYDRANT (REFER TO CIVIL)
- MH NEW MAN HOLE (REFER TO CIVIL)
- CB NEW CATCH BASIN (REFER TO CIVIL)
- BD NEW BOLLARD

- NEW BUILDING
- EXISTING BUILDING
- EXISTING AREA NOT IN SCOPE OF WORK
- EXISTING UNIT PAVERS TO REMAIN
- EXISTING HEAVY DUTY ASPHALT PAVING TO REMAIN
- EXISTING LIGHT DUTY ASPHALT PAVING TO REMAIN
- EXISTING CONCRETE WALK TO REMAIN
- EXISTING CRUSHED STONE PATHWAY TO REMAIN
- EXISTING MULCH TO REMAIN
- NEW TYPE 1 ASPHALT - HEAVY DUTY (REFER TO SPEC.)
- NEW TYPE 2 ASPHALT - LIGHT DUTY (REFER TO SPEC.)
- NEW CONCRETE WALK
- NEW SEEDED GRASS
- NEW SODDED GRASS (REFER TO LANDSCAPE)
- EXISTING EASEMENT (REFER TO SURVEY)
- NEW TREES (REFER TO LANDSCAPE)
- EXISTING TREES TO REMAIN (REFER TO LANDSCAPE)

EXISTING SCHOOL + ADDITION + 6 PORTABLES+DOME+PAVILION

SITE DATA

SITE AREA	60,101.4 m ²
FOOTPRINT	
EXISTING SCHOOL FOOTPRINT	7,111.6 m ²
SCHOOL ADDITION FOOTPRINT	1,043.1 m ²
6 PORTABLES FOOTPRINT	420.0 m ²
FOOTBALL DOME FOOTPRINT	10,518.4 m ²
DOME PAVILION	504.1 m ²
TOTAL FOOTPRINT	19,597.2 m ²
GROSS FLOOR AREA	
(AS PER CITY OF OTTAWA ZONING BY-LAW DEFINITION)	
EXISTING SCHOOL GROSS FLOOR AREA	6,159.8 m ²
SCHOOL ADDITION GROSS FLOOR AREA	1,655.3 m ²
6 PORTABLES GROSS FLOOR AREA	402.0 m ²
FOOTBALL DOME GROSS FLOOR AREA	9,927.8 m ²
NEW DOME PAVILION GROSS FLOOR AREA	237.8 m ²
TOTAL GROSS FLOOR AREA	18,382.7 m ²

TOPOGRAPHICAL AND SURVEY INFORMATION PROVIDED BY ANNIS, O'SULLIVAN, VOLLEBEKK LTD.
(613)727-0850 FAX (613)727-1079
Job No: 22688-22
LEGAL DESCRIPTION:
PART OF LOT 28, CONCESSION 11
GEOGRAPHIC TOWNSHIP OF GOULBOURN
CITY OF OTTAWA

CITY OF OTTAWA ZONING

REQUIRED	PROVIDED
MINOR INSTITUTIONAL ZONE 11A [2129]	
LOT AREA	60,101.4m ²
LOT FRONTAGE	172.6m
LOT COVERAGE	32.6%
BUILDING HEIGHT (DOME)	(DOME) 23.01m
BUILDING HEIGHT (OTHERS)	(SCHOOL) 10.95m
FRONT YARD SETBACK	7.5m
REAR YARD SETBACK	8.5m
SIDE YARD SETBACK	12.0m
CORNER YARD SETBACK	7.5m
LANDSCAPING IN PARKING	30.9%

PARKING CALCULATIONS

MOTOR VEHICLE PARKING :
EXISTING SCHOOL + ADDITION + DOME + PAVILION

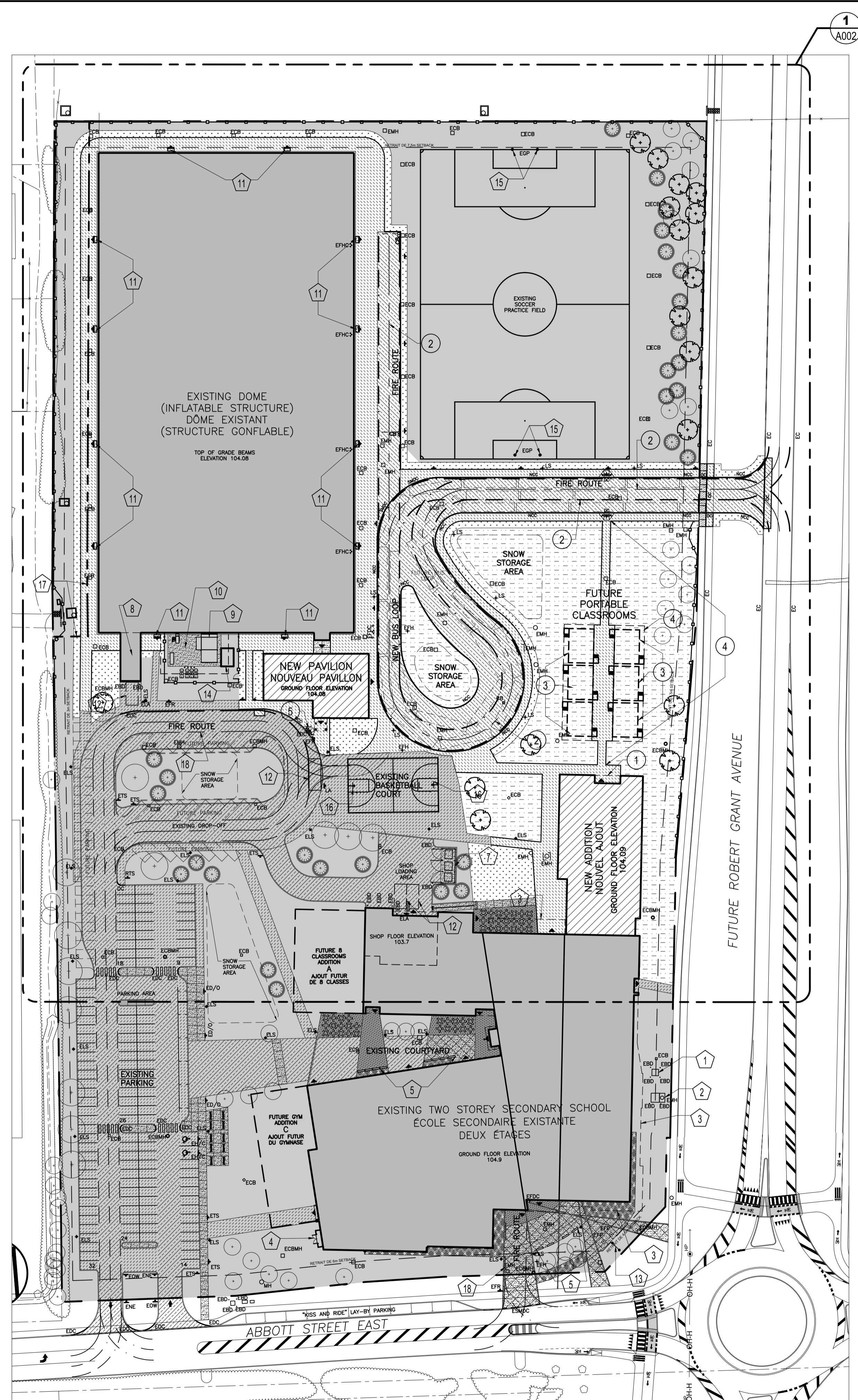
REQUIRED	USE	No. CLASS	SPACES PER CLASS	SPACES REQ'D
53 CLASSROOMS + 6 PORTABLES = 59 TOTAL	MIDDLE SCHOOL	18	1.5/CLASS	27
	MIDDLE SCHOOL PORTABLES	2	1.5/CLASS	3
	HIGH SCHOOL	35	2/CLASS	70
	HIGH SCHOOL PORTABLES	4	2/CLASS	8
	DOME (ATHLETIC FACILITY)	1 SURFACE	4/SURFACE	4
TOTAL REQUIRED PARKING SPACES				112 SPACES
TOTAL REQUIRED PARKING SPACES FOR PERSONS WITH DISABILITIES				2 SPACES
PROVIDED	SPACES @ 5.2mD X 2.6mW			121 SPACES
	SPACES FOR PERSONS WITH DISABILITIES @ 5.2mD X 3.67mW			2 SPACES
TOTAL SPACES PROVIDED				123 SPACES

BICYCLE PARKING (0.6m X 1.8m)

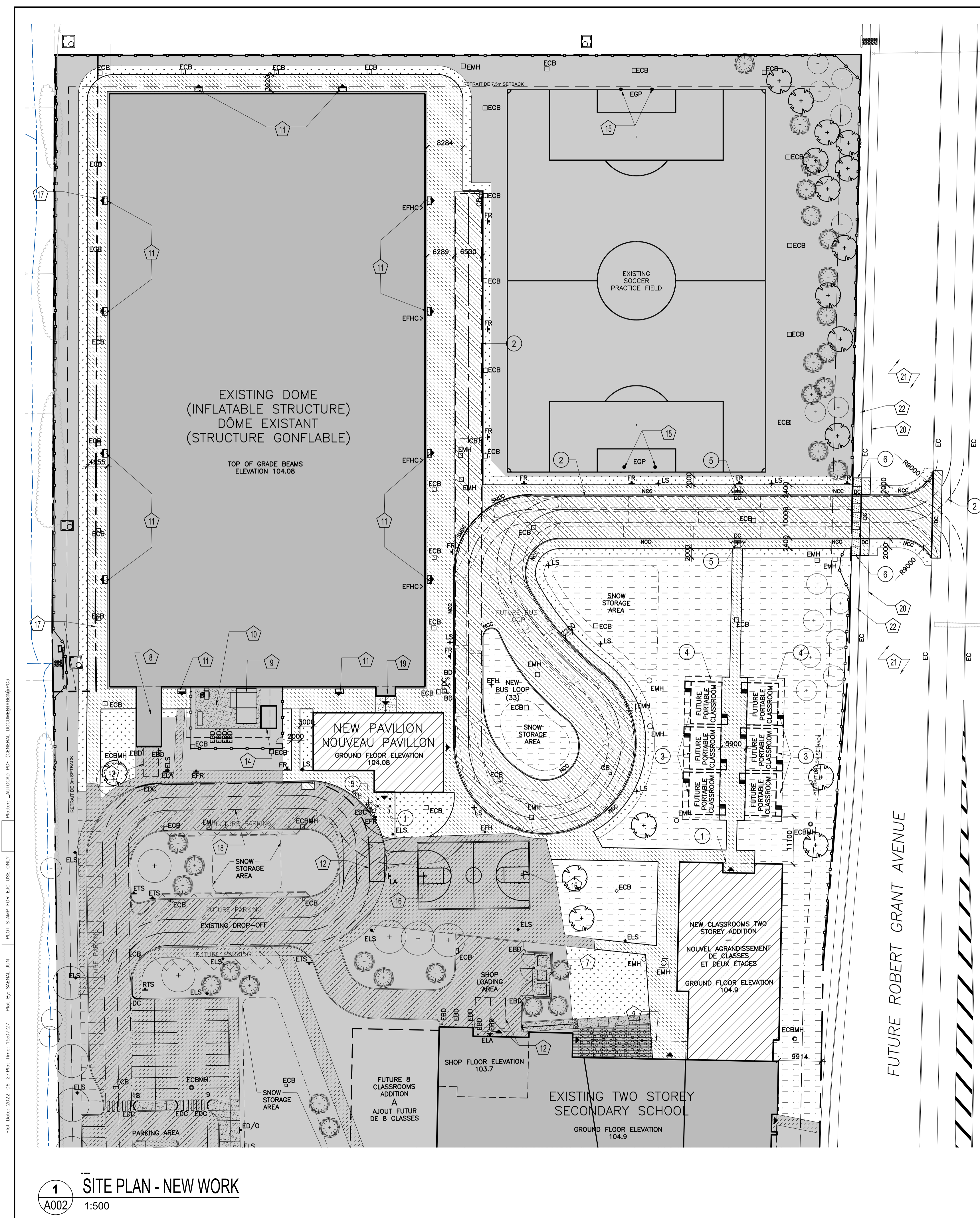
REQUIRED	USE	GROSS AREA	TABLE 113A	SPACES PER	SPACES REQ'D
TOTAL REQUIRED PARKING SPACES	SCHOOL	8,217.1m ²	COLUMN VI	1 / 100m ²	83 SPACES
	DOME	10,165.6m ²	COLUMN VII	1 / 1500m ²	7 SPACES
	TOTAL REQUIRED PARKING SPACES				90 SPACES
PROVIDED	SCHOOL (EXISTING)				90 SPACES
	DOME				0 SPACES
TOTAL SPACES PROVIDED					90 SPACES

LOADING SPACES (3.5m X 7.0m)

REQUIRED	USE	GROSS AREA	TABLE 113A	SPACES PER	SPACES REQ'D
TOTAL REQUIRED PARKING SPACES	SCHOOL	8,217.1m ²	COLUMN VI	1	1
	DOME	10,165.6m ²	COLUMN VII	2	2
	TOTAL REQUIRED PARKING SPACES				3 SPACES
PROVIDED	SCHOOL				2 SPACES
	DOME				2 SPACES
TOTAL SPACES PROVIDED					4 SPACES



1 A001 SITE PLAN - OVERALL
1:750



LEGEND

- BARRIER FREE PARKING
- BUILDING ENTRANCE/EXIT
- EXISTING BOLLARD TO REMAIN
- EXISTING CONCRETE CURB TO REMAIN
- EXISTING DEPRESSED CONCRETE CURB TO REMAIN
- EXISTING SEMI-MOUNTABLE DEPRESSED CONCRETE CURB
- EXISTING CHAIN LINK FENCE TO REMAIN
- ROAD CENTER LINE
- FIRE ROUTE
- SET BACK LINE
- PROPERTY LOT LINE
- EASEMENT BOUNDARY
- EFR EXISTING FIRE ROUTE SIGN TO REMAIN
- EH/C EXISTING HANDICAPPED PARKING SIGN TO REMAIN
- ED/O EXISTING DROP-OFF SIGN TO REMAIN
- EOW EXISTING ONE WAY SIGN TO REMAIN
- ENE EXISTING NO ENTRY SIGN TO REMAIN
- ELA EXISTING LOADING AREA SIGN TO REMAIN
- ETS EXISTING MISC. TRAFFIC SIGN TO REMAIN
- ELS EXISTING LIGHT STANDARD TO REMAIN
- SIB IRON BAR (REFER TO SURVEY)
- EFDC EXISTING FIRE DEPARTMENT CONNECTION TO REMAIN
- FDC NEW FIRE DEPARTMENT CONNECTION (REFER TO MECHANICAL)
- EFH EXISTING FIRE HYDRANT TO REMAIN
- EMH EXISTING MAN HOLE TO REMAIN (REFER TO CIVIL)
- ECB EXISTING CATCH BASIN TO REMAIN (REFER TO CIVIL)
- EFP EXISTING FLAG POLE TO REMAIN
- EUP EXISTING UTILITY POST
- EFHC EXISTING FIRE HOSE CABINET
- NCC NEW CONCRETE CURB
- DC NEW DEPRESSED CONCRETE CURB
- SMDC NEW SEMI-MOUNTABLE DEPRESSED CONCRETE CURB
- FR NEW FIRE ROUTE SIGN (EVERY 25 METRES)
- LA NEW LOADING AREA SIGN
- LS NEW LIGHT STANDARD
- FH NEW FIRE HYDRANT (REFER TO CIVIL)
- MH NEW MAN HOLE (REFER TO CIVIL)
- CB NEW CATCH BASIN (REFER TO CIVIL)
- BD NEW BOLLARD
- NEW BUILDING
- EXISTING BUILDING
- EXISTING AREA NOT IN SCOPE OF WORK
- EXISTING UNIT PAVERS TO REMAIN
- EXISTING HEAVY DUTY ASPHALT PAVING TO REMAIN
- EXISTING LIGHT DUTY ASPHALT PAVING TO REMAIN
- EXISTING CONCRETE WALK TO REMAIN
- EXISTING CRUSHED STONE PATHWAY TO REMAIN
- EXISTING MULCH TO REMAIN
- NEW TYPE 1 ASPHALT - HEAVY DUTY (REFER TO SPEC.)
- NEW TYPE 2 ASPHALT - LIGHT DUTY (REFER TO SPEC.)
- NEW CONCRETE WALK
- NEW SEEDED GRASS
- NEW SODDED GRASS (REFER TO LANDSCAPE)
- EXISTING EASEMENT (REFER TO SURVEY)
- NEW TREES (REFER TO LANDSCAPE)
- EXISTING TREES TO REMAIN (REFER TO LANDSCAPE)

GENERAL NOTES

1. EXTENT OF CONTRACT IS LIMITED TO WITHIN PROPERTY EXCEPT WHERE SHOWN OTHERWISE.
2. ALL WORK OUTSIDE PROPERTY LINE TO BE CONSTRUCTED TO CITY OF OTTAWA CONSTRUCTION STANDARDS.
3. PARKING STALL SIZE: 2600mm x 5200mm
BARRIER FREE PARKING STALL: 3900mm x 5200mm
4. FOR LANDSCAPE/PLANTING DETAILS SEE DRAWING AS PREPARED BY JBLA.
5. FOR SITE GRADING INFORMATION SEE GRADING & DRAINAGE DRAWING AS PREPARED BY WSP.
6. FOR SITE SERVICES INFORMATION SEE SITE SERVICES DRAWING AS PREPARED BY WSP.
7. FOR SOIL INVESTIGATION REPORT REFER TO REPORT PREPARED BY EXP SERVICES.
8. SLOPES OF CONCRETE/PAVING AT DEPRESSED CURBS SHALL NOT EXCEED 5%.
9. CONTRACTOR TO VERIFY ALL DIMENSIONS ON SITE AND REPORT ANY ERRORS TO THE ARCHITECT. CONTRACTOR TO COORDINATE WITH ALL DRAWINGS.
10. FOR SITE SURVEY INFORMATION, SEE TOPOLOGICAL SURVEY DRAWING PREPARED BY ANNIS, O'SULLIVAN, VOLLEBEKK LTD.

SITE PLAN NOTES - NEW

- 1 NEW SECOND FLOOR OVERHANG OR CANOPY
- 2 NEW FIRE ROUTE
- 3 FUTURE PORTABLE CLASSROOM N.I.C.
- 4 LINE OF FUTURE GRANULAR 'A' PAD FOR FUTURE PORTABLE CLASSROOMS
- 5 NEW CURB RAMP WITH FLARED SIDES AND TACTILE SURFACE WALKING INDICATOR. REFER TO SITE DETAILS AND SPECIFICATIONS
- 6 NEW CONCRETE SIDEWALK/CURB TO NEAREST CONTROL JOINT.

SITE PLAN NOTES - EXISTING

- 1 EXISTING TRANSFORMER
- 2 EXISTING PLANTER
- 3 EXISTING SECOND FLOOR OVERHANG OR CANOPY
- 4 EXISTING GAS METER WITH CHAINLINK FENCE
- 5 EXISTING HEAVY TIMBER BENCHES
- 6 EXISTING BICYCLE PARKING 90 SPACES
- 7 EXISTING GARBAGE ENCLOSURE
- 8 EXISTING VEHICLE AIRLOCK
- 9 EXISTING HEAT AND INFLATION UNIT
- 10 EXISTING FENCED SERVICE EQUIPMENT YARD
- 11 EXISTING EMERGENCY EXIT FROM DOME
- 12 EXISTING LOADING SPACE
- 13 EXISTING SCHOOL SIGN
- 14 EXISTING CONCRETE STORAGE SHED
- 15 EXISTING GOAL POSTS
- 16 EXISTING BASKET BALL BACKSTOPS
- 17 EXISTING EASEMENT
- 18 EXISTING FIRE ROUTE
- 19 EXISTING DOME VESTIBULE
- 20 EXISTING ASPHALT BICYCLE PATH
- 21 EXISTING GRASS AREA
- 22 EXISTING CONCRETE SIDE WALK

Écoles catholiques Centre-Est

ISSUE NO.	REV. NO.	DATE	ISSUE
1	0	2022/11/01	ISSUED FOR SITE PLAN CONTROL

LES IDÉES, CONCEPTS, DISPOSITIONS ET PLANS MONTRÉS OU REPRÉSENTÉS PAR CE DESSIN APPARTIENNENT À EDWARD J. CUHACI AND ASSOCIATES ARCHITECTS INC. ET ONT ÉTÉ CRÉÉS ET DÉVELOPPÉS POUR ÊTRE UTILISÉS DANS LE CADRE DU PRÉSENT PROJET. ILS NE DOIVENT PAS ÊTRE UTILISÉS À D'AUTRES FINS NI COMMUNIQUÉS À QUI QUE CE SOIT SANS LA PERMISSION ÉCRITE DE EDWARD J. CUHACI AND ASSOCIATES ARCHITECTS INC.

L'ARCHITECTE DÉCLINE TOUTE RESPONSABILITÉ DÉCOULANT DE PROBLÈMES FAISANT SUITE AU NON-RESPECT DES PLANS ET DEVIS OU DE L'INTENTION DU CONCEPT QU'ILS TRANSMETTENT OU DE TOUTS PROBLÈMES POUVANT RÉSULTER DU DÉFAUT DE TIERS D'OBTENIR OU DE SUIVRE LES INSTRUCTIONS DE L'ARCHITECTE RELATIVEMENT AUX ERREURS, OMISSIONS, INCOHÉRENCES, AMBIGUITÉS OU CONTRADICTIONS ALLÉGUÉES.

L'ENTREPRENEUR DOIT VÉRIFIER TOUTES LES DIMENSIONS SUR PLACE ET INFORMER L'ARCHITECTE DE TOUT ÉCART AVANT LE DÉBUT DES TRAVAUX. NE PAS MESURER LES DESSINS À L'ÉCHELLE.

ALL IDEAS, DESIGNS, ARRANGEMENTS, AND PLANS INDICATED OR REPRESENTED BY THIS DRAWING ARE OWNED BY AND THE PROPERTY OF EDWARD J. CUHACI AND ASSOCIATES INC. AND WERE CREATED, EVOLVED, AND DEVELOPED FOR USE ON AND IN CONNECTION WITH THE SPECIFIED PROJECT. NONE OF THE IDEAS, DESIGNS, ARRANGEMENTS OR PLANS SHALL BE USED BY OR DISCLOSED TO ANY PERSON, FIRM, OR CORPORATION FOR ANY PURPOSE WHATSOEVER WITHOUT THE WRITTEN PERMISSION OF EDWARD J. CUHACI AND ASSOCIATES INC.

THE ARCHITECT WAIVES ANY AND ALL RESPONSIBILITY AND LIABILITY FOR PROBLEMS WHICH ARISE FROM FAILURE TO FOLLOW THESE PLANS, SPECIFICATIONS, AND THE DESIGN INTENT THEY CONVEY, OR FOR PROBLEMS WHICH ARISE FROM OTHERS' FAILURE TO OBTAIN AND/OR FOLLOW THE ARCHITECT'S GUIDANCE WITH RESPECT TO ANY ERRORS, OMISSIONS, INCONSISTENCIES, AMBIGUITIES OR CONFLICTS WHICH ARE ALLEGED.

CONTRACTOR TO VERIFY ALL DIMENSIONS AND NOTIFY THE ARCHITECT OF ANY DISCREPANCIES BEFORE WORK COMMENCES. DO NOT SCALE DRAWINGS

TRUE NORTH

PLAN NORTH

ONTARIO ASSOCIATION OF ARCHITECTS
JESZY JURKOWICZ
LICENCE 6193

EDWARD J. CUHACI & ASSOCIATES ARCHITECTS Inc.
171 Slater St. Suite 100, Ottawa, Ontario, K1P 5H7
Fax: (613) 238-1944 Telephone: (613) 238-7155 E-mail: info@cuhaci.com

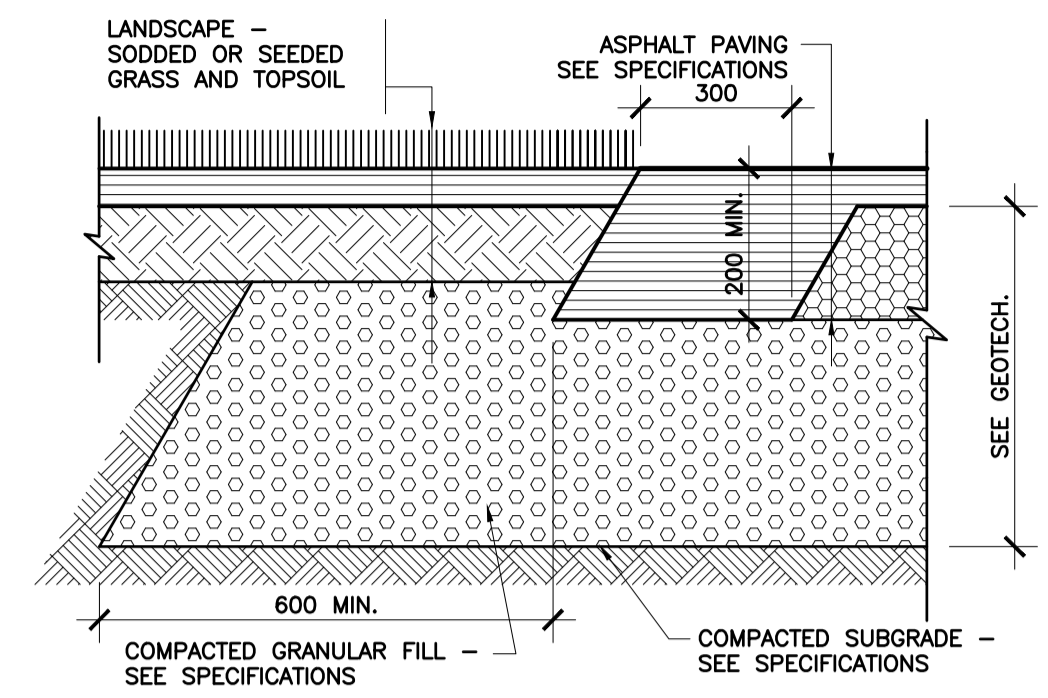
PROJECT TITLE/TITRE DU PROJET
ÉCOLE SECONDAIRE CATHOLIQUE PAUL-DESMARAIS - ADDITION
5315 ABBOTT STREET EAST
OTTAWA, ON

CONSEIL DES ÉCOLES CATHOLIQUES DU CENTRE-EST
4000, RUE LABELLE, OTTAWA, ON K1J 1A1

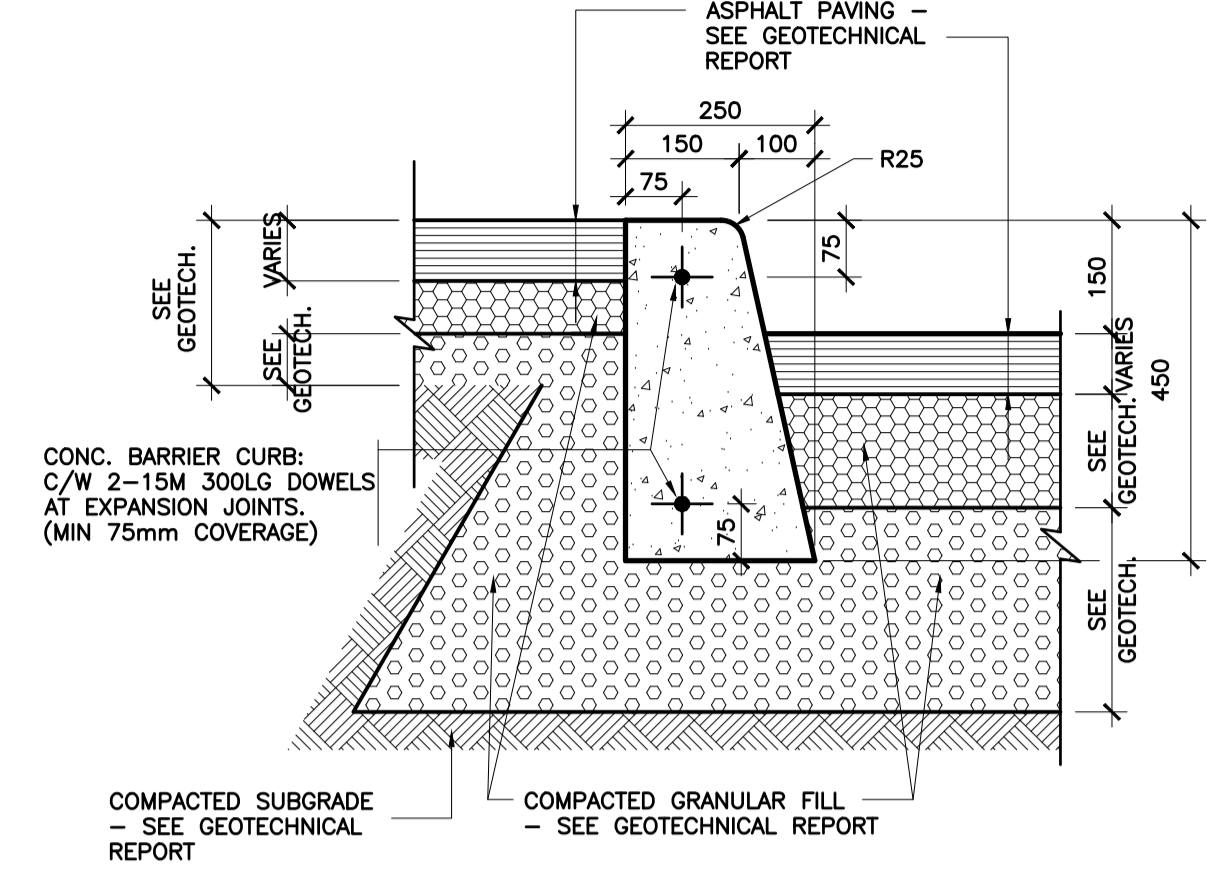
DRAWING TITLE/TITRE DU DESSIN
SITE PLAN - NEW WORK

SCALE ÉCHELLE	1:500	PROJ. No	2219	ISSUE No	1	REV. No	0	
DRAWN BY DESSINÉ PAR	S.J.	A002						
CHECKED BY VÉRIFIÉ PAR	J.J.							
DATE	JANUARY 2022	FICHER ACAD FILE: 2219-A002_SPC.dwg						

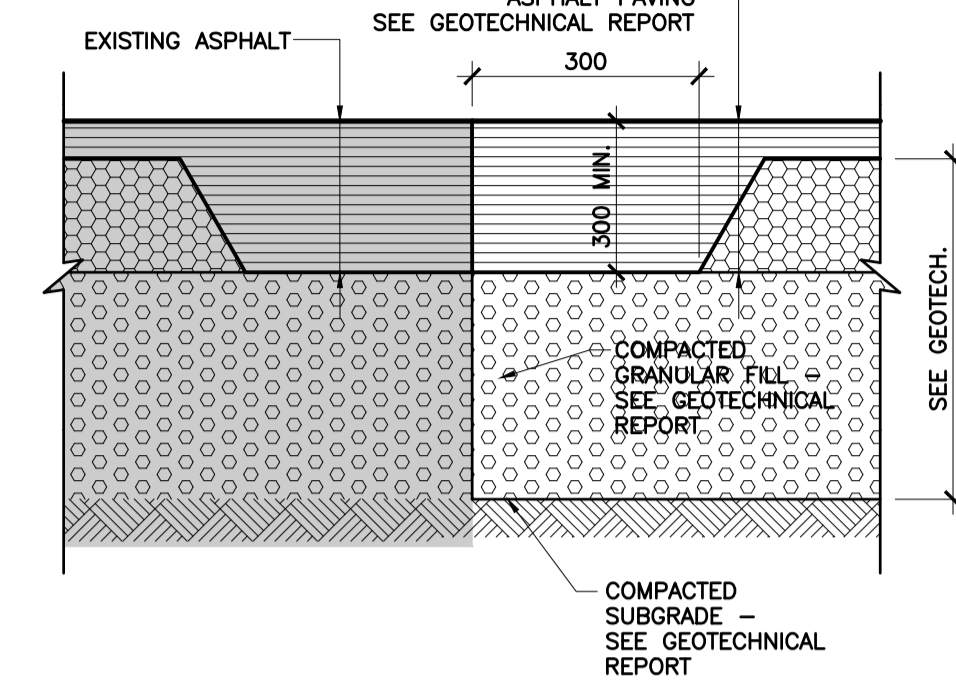
Plot Date: 2022-06-27 Plot Time: 15:07:27 Plot By: SMOUL, JLN
 PLOT STAMP FOR E-USE ONLY
 Période: A00000 PDF (GENERAL) DOC:04981041413



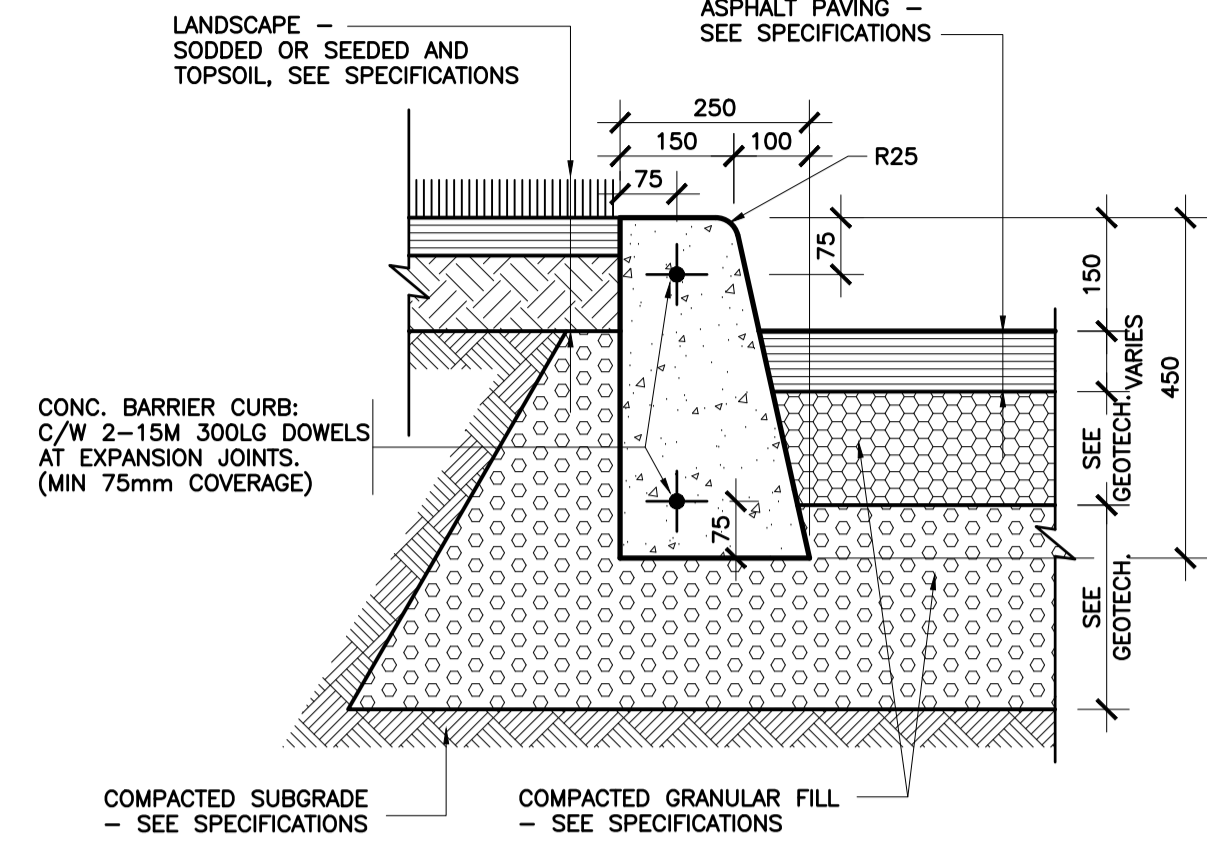
1
A003
SECTION DETAIL
ASPHALT AT GRASS
1:10



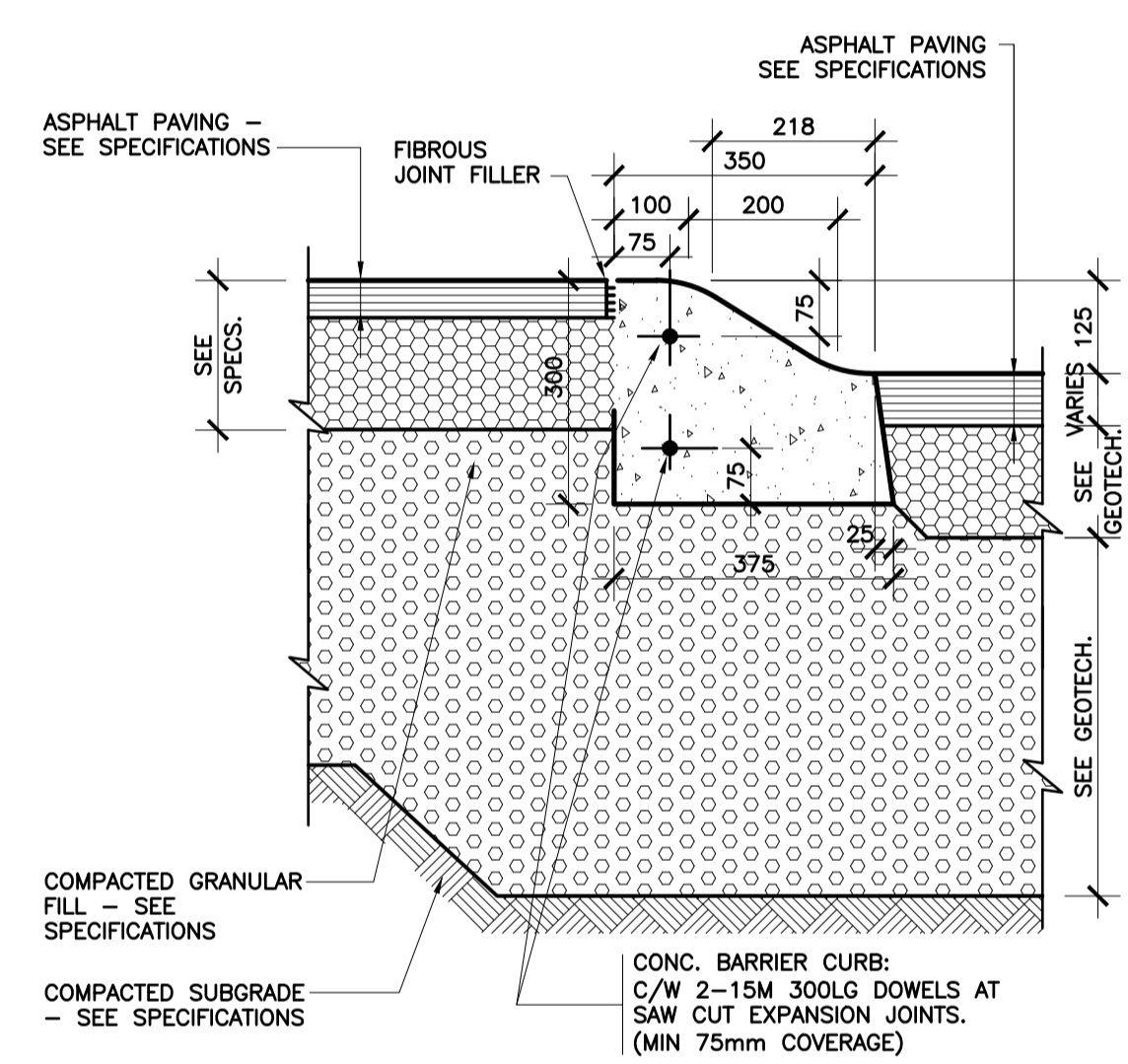
2
A003
SECTION DETAIL
ASPHALT - CONC. CURB - ASPHALT
1:10



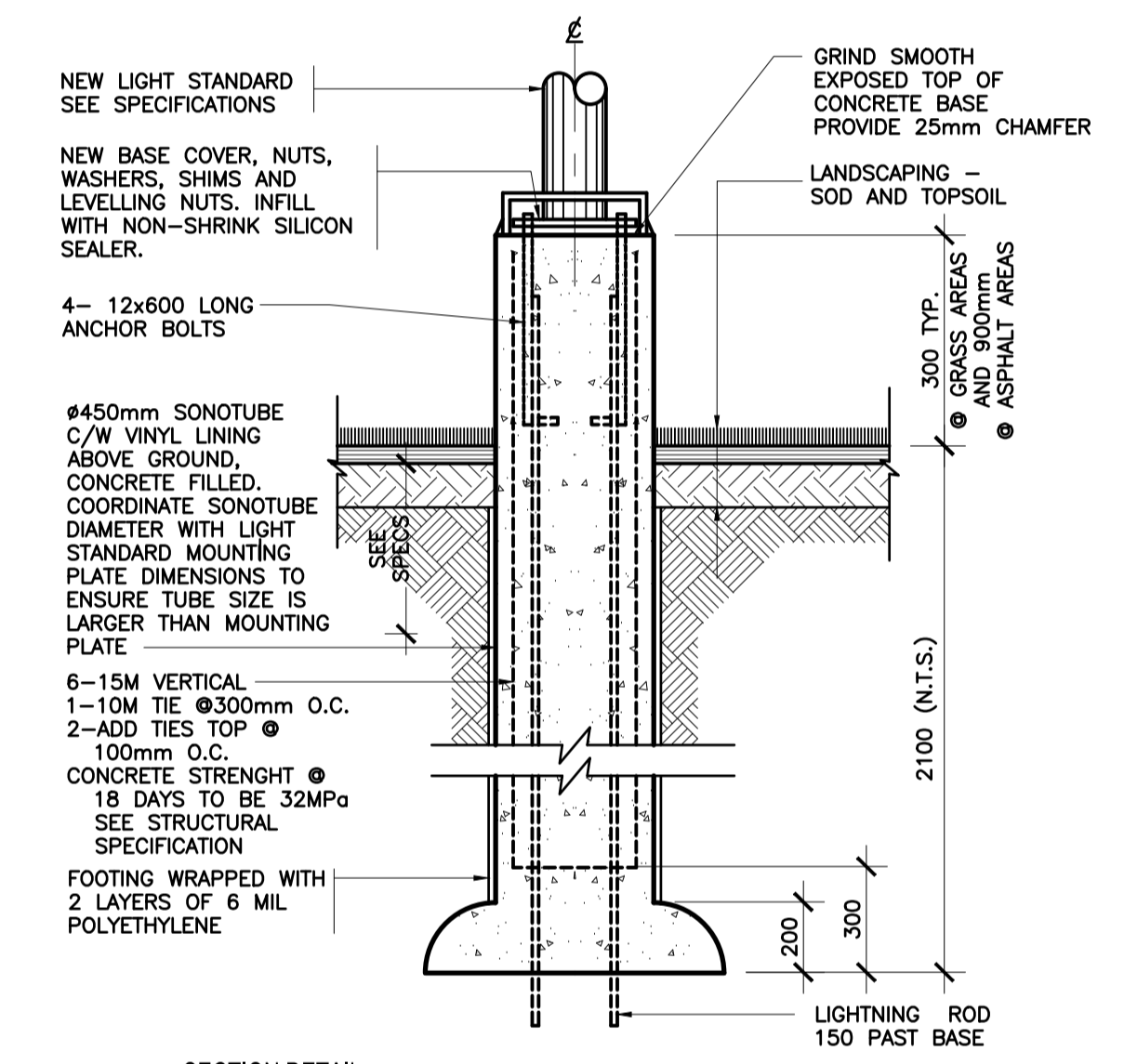
3
A003
SECTION DETAIL
NEW ASPHALT PAVING @ EXISTING
1:10



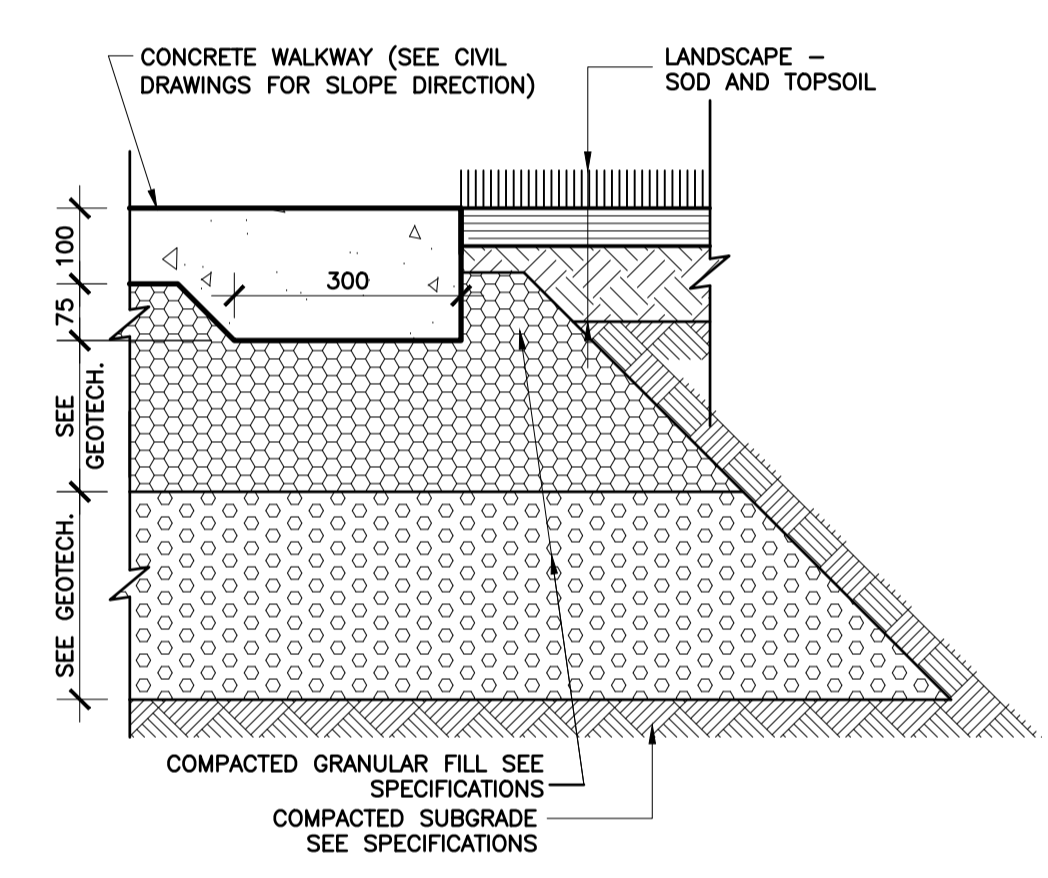
4
A003
SECTION DETAIL
CONCRETE CURB AT GRASS
1:10



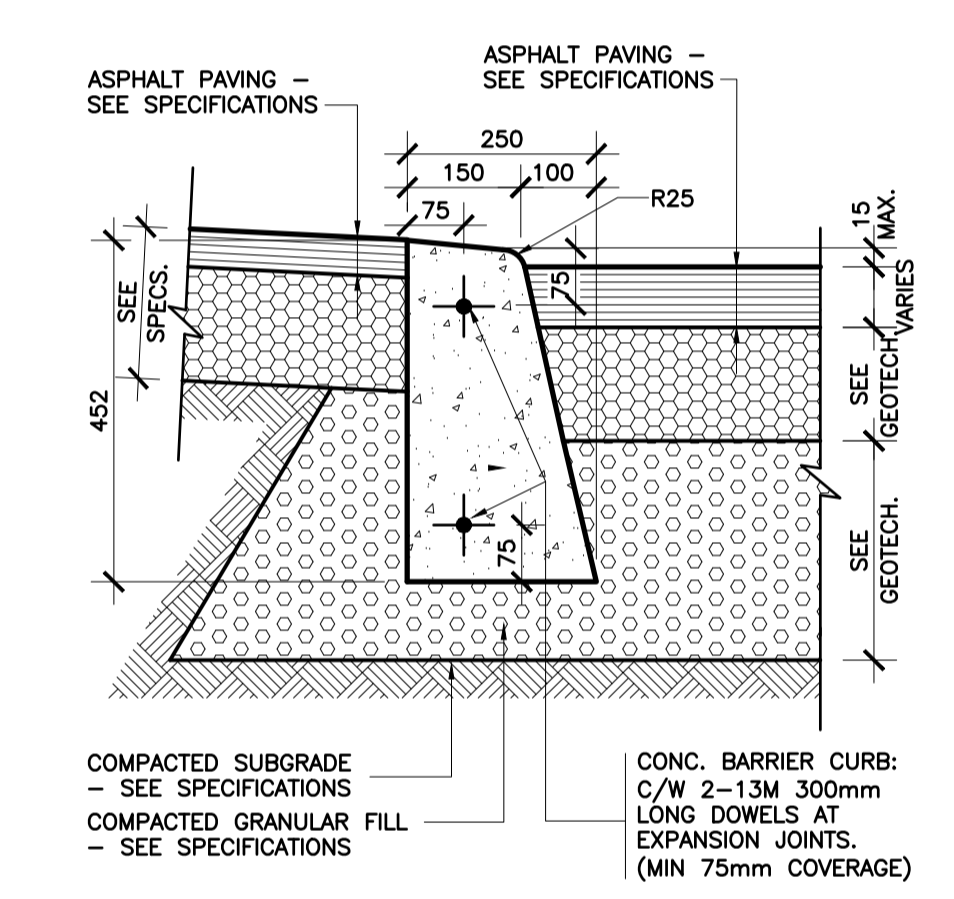
5
A003
SECTION DETAIL
SMDC @ ASPHALT PAVING
1:10



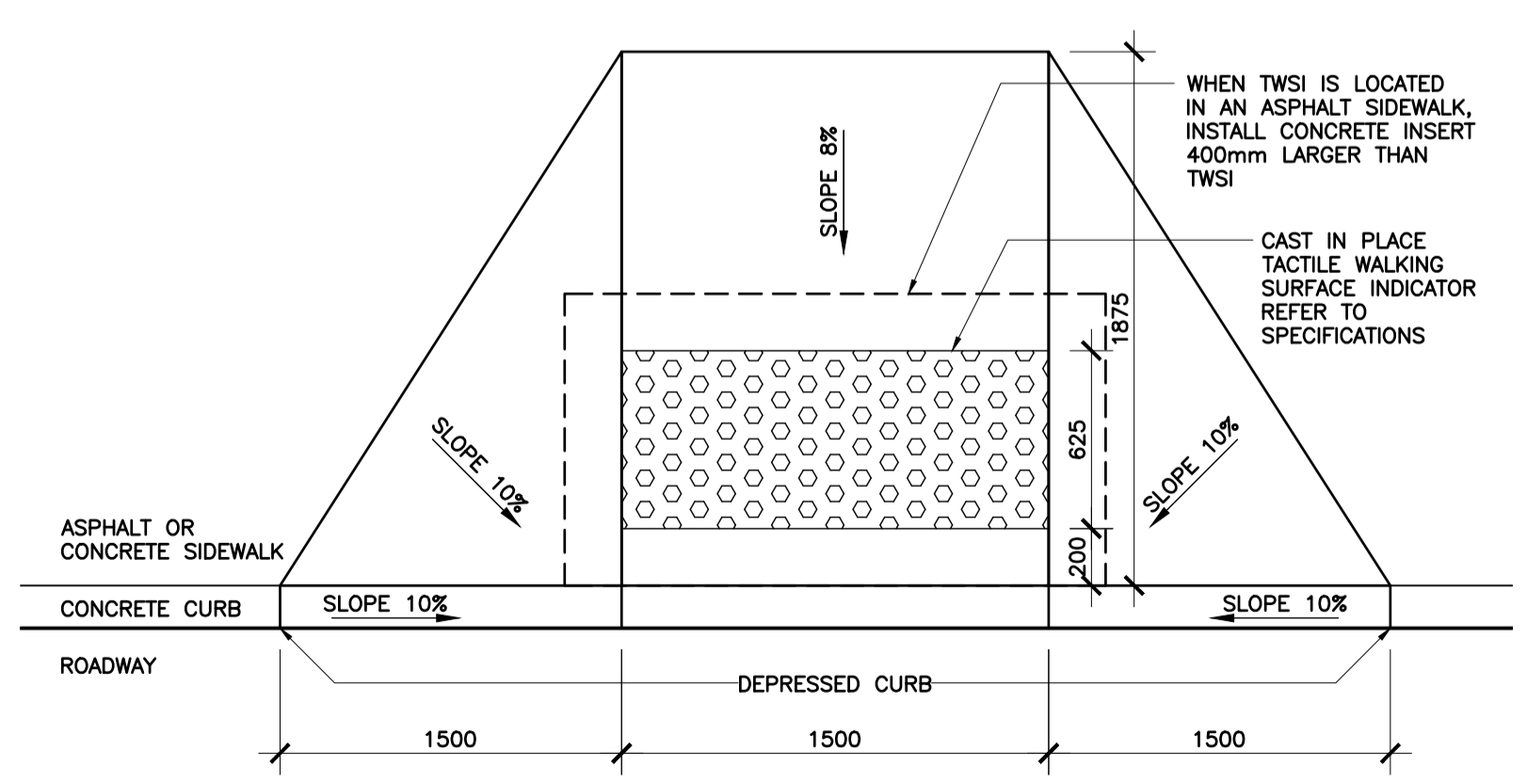
6
A003
SECTION DETAIL
LIGHT STANDARD
1:20



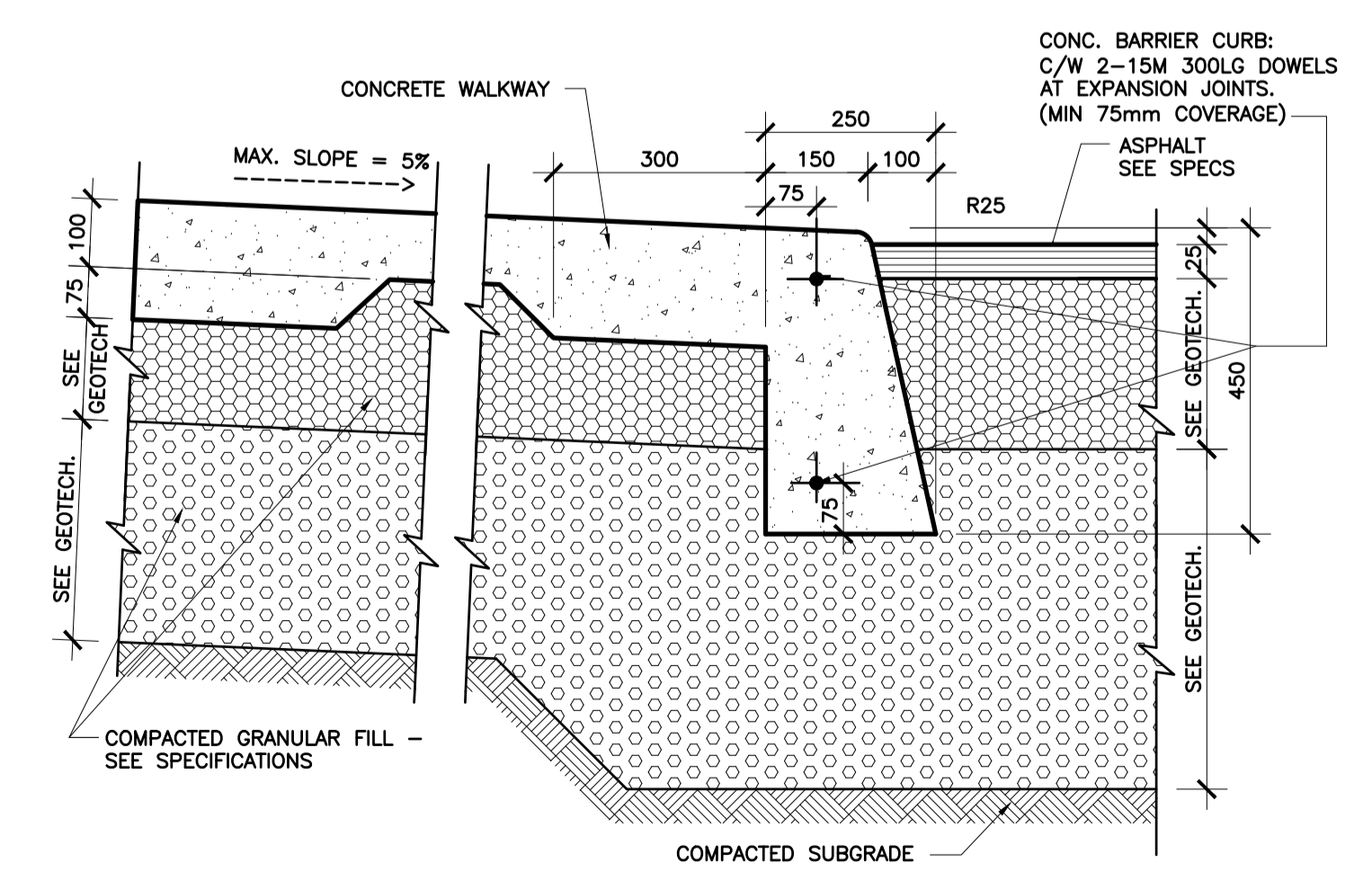
7
A003
SECTION DETAIL
CONC. SIDE WALK - SOD
1:10



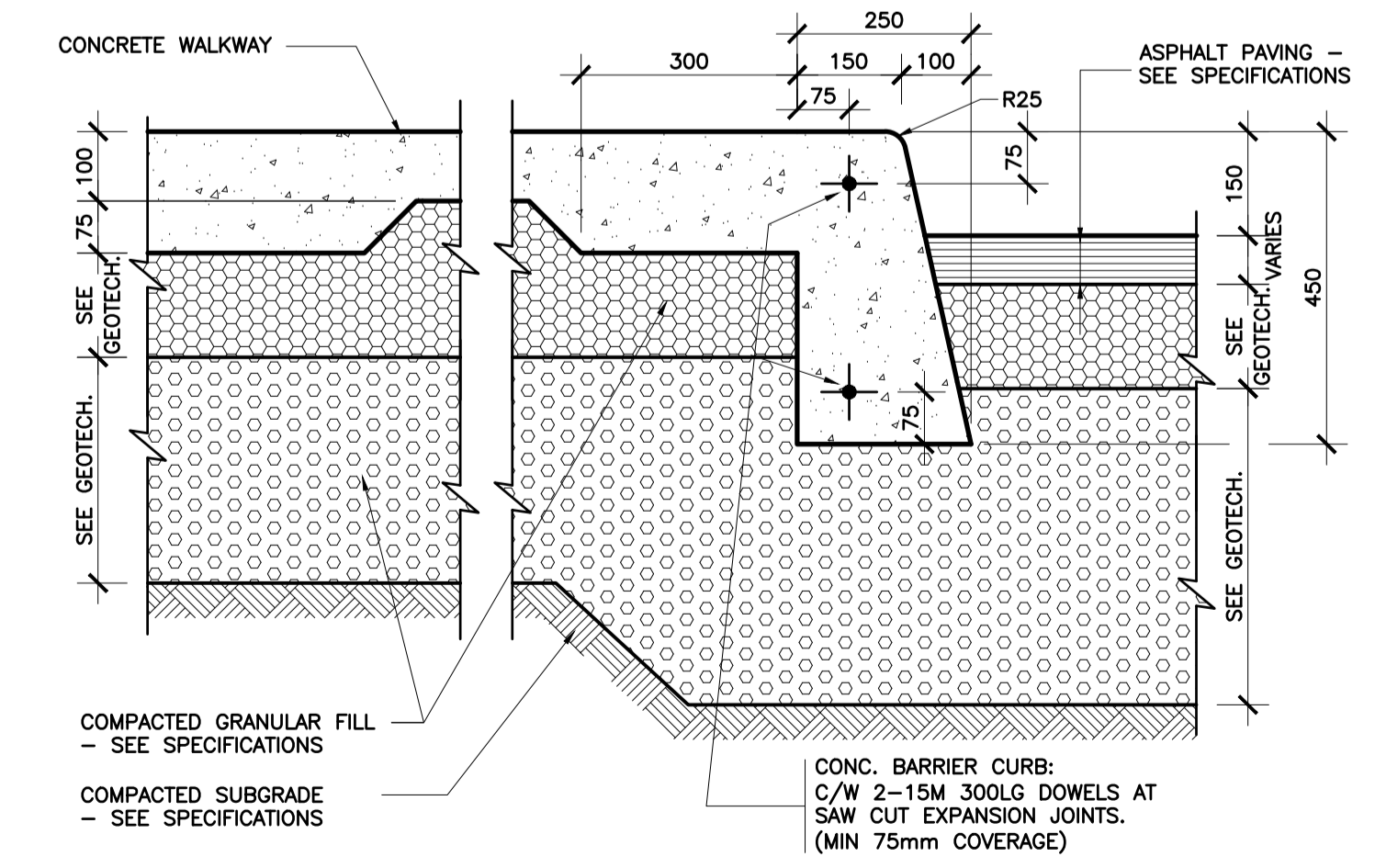
8
A003
SECTION DETAIL
ASPHALT - DEPRESSED CURB - ASPHALT
1:10



9
A003
PLAN DETAIL
TACTILE WALKING SURFACE INDICATOR (TWSI)
1:25



10
A003
SECTION DETAIL
CONC. SIDE WALK - DEPRESSED CURB - ASPHALT
1:10



11
A003
SECTION DETAIL
CONC. SIDE WALK - CONC. CURB - ASPHALT
1:10

ISSUE NO.	REV. NO.	DATE	ISSUE
1	0	2022/11/01	ISSUED FOR SITE PLAN CONTROL

LES IDÉES, CONCEPTS, DISPOSITIONS ET PLANS MONTRÉS OU REPRÉSENTÉS PAR CE DESSIN APPARTIENNENT À EDWARD J. CUHACI AND ASSOCIATES ARCHITECTS INC. ET ONT ÉTÉ CRÉÉS ET DÉVELOPPÉS POUR ÊTRE UTILISÉS DANS LE CADRE DU PRÉSENT PROJET. ILS NE DOIVENT PAS ÊTRE UTILISÉS À D'AUTRES FINS NI COMMUNIQUÉS À QUI QUE CE SOIT SANS LA PERMISSION ÉCRITE DE EDWARD J. CUHACI AND ASSOCIATES ARCHITECTS INC.

L'ARCHITECTE DÉCLINE TOUTE RESPONSABILITÉ DÉCOULANT DE PROBLÈMES FAISANT SUITE AU NON-RESPECT DES PLANS ET DEVIS OU DE L'INTENTION DU CONCEPT QU'ILS TRANSMETTENT OU DE TOUTS PROBLÈMES POUVANT RÉSULTER DU DÉFAUT DE TIERS D'OBTENIR OU DE SUIVRE LES INSTRUCTIONS DE L'ARCHITECTE RELATIVEMENT AUX ERREURS, OMISSIONS, INCOHÉRENCES, AMBIGUITÉS OU CONTRADICTIONS ALLÉGUÉES.

L'ENTREPRENEUR DOIT VÉRIFIER TOUTES LES DIMENSIONS SUR PLACE ET INFORMER L'ARCHITECTE DE TOUT ÉCART AVANT LE DÉBUT DES TRAVAUX. NE PAS MESURER LES DESSINS À L'ÉCHELLE.

ALL IDEAS, DESIGNS, ARRANGEMENTS, AND PLANS INDICATED OR REPRESENTED BY THIS DRAWING ARE OWNED BY AND THE PROPERTY OF EDWARD J. CUHACI AND ASSOCIATES INC. AND WERE CREATED, EVOLVED, AND DEVELOPED FOR USE ON AND IN CONNECTION WITH THE SPECIFIED PROJECT. NONE OF THE IDEAS, DESIGNS, ARRANGEMENTS OR PLANS SHALL BE USED BY OR DISCLOSED TO ANY PERSON, FIRM, OR CORPORATION FOR ANY PURPOSE WHATSOEVER WITHOUT THE WRITTEN PERMISSION OF EDWARD J. CUHACI AND ASSOCIATES INC.

THE ARCHITECT WAIVES ANY AND ALL RESPONSIBILITY AND LIABILITY FOR PROBLEMS WHICH ARISE FROM FAILURE TO FOLLOW THESE PLANS, SPECIFICATIONS, AND THE DESIGN INTENT THEY CONVEY, OR FOR PROBLEMS WHICH ARISE FROM OTHERS' FAILURE TO OBTAIN AND/OR FOLLOW THE ARCHITECT'S GUIDANCE WITH RESPECT TO ANY ERRORS, OMISSIONS, INCONSISTENCIES, AMBIGUITIES OR CONFLICTS WHICH ARE ALLEGED.

CONTRACTOR TO VERIFY ALL DIMENSIONS AND NOTIFY THE ARCHITECT OF ANY DISCREPANCIES BEFORE WORK COMMENCES. DO NOT SCALE DRAWINGS



EDWARD J. CUHACI & ASSOCIATES ARCHITECTS Inc.
171 Slater St. Suite 100, Ottawa, Ontario, K1P 5H7
Fax: (613) 238-1944 Telephone: (613) 238-7135 E-mail: info@juhaci.com

PROJECT TITLE/TITRE DU PROJET
ÉCOLE SECONDAIRE CATHOLIQUE PAUL-DESMARAIS - ADDITION
5315 ABBOTT STREET EAST
OTTAWA, ON

CONSEIL DES ÉCOLES CATHOLIQUES DU CENTRE-EST
4000, RUE LABELLE, OTTAWA, ON K1J 1A1

DRAWING TITLE/TITRE DU DESSIN
SITE DETAILS

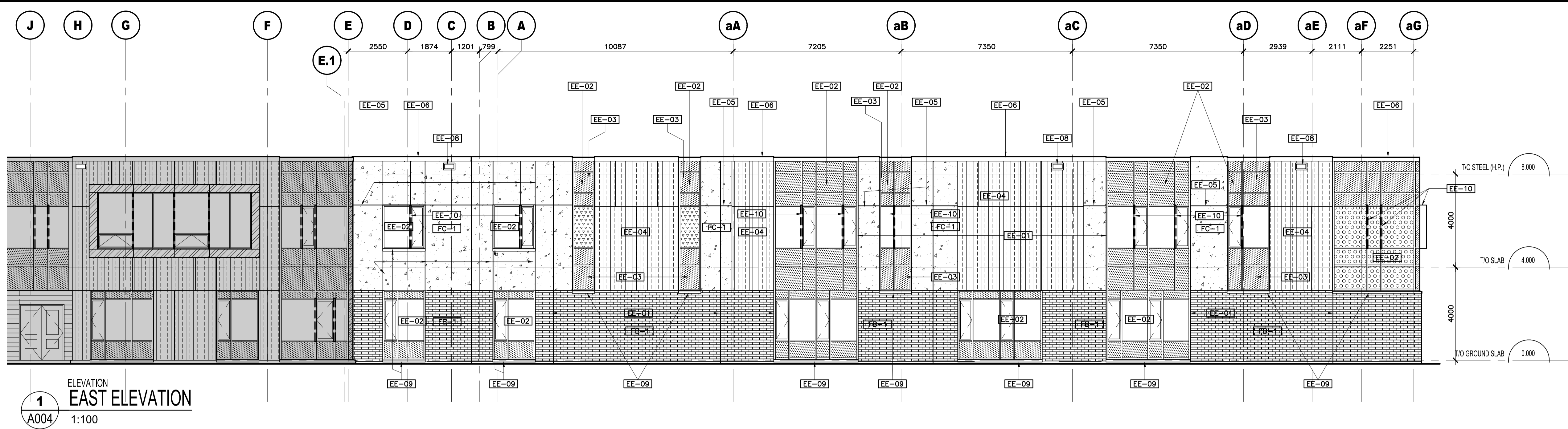
SCALE	PROJ. No	ISSUE No	REV. No
ECHELLE	1:500	2219	1 0

DRAWN BY	DRAWING/DESSIN
DESIGNÉ PAR	S.J.

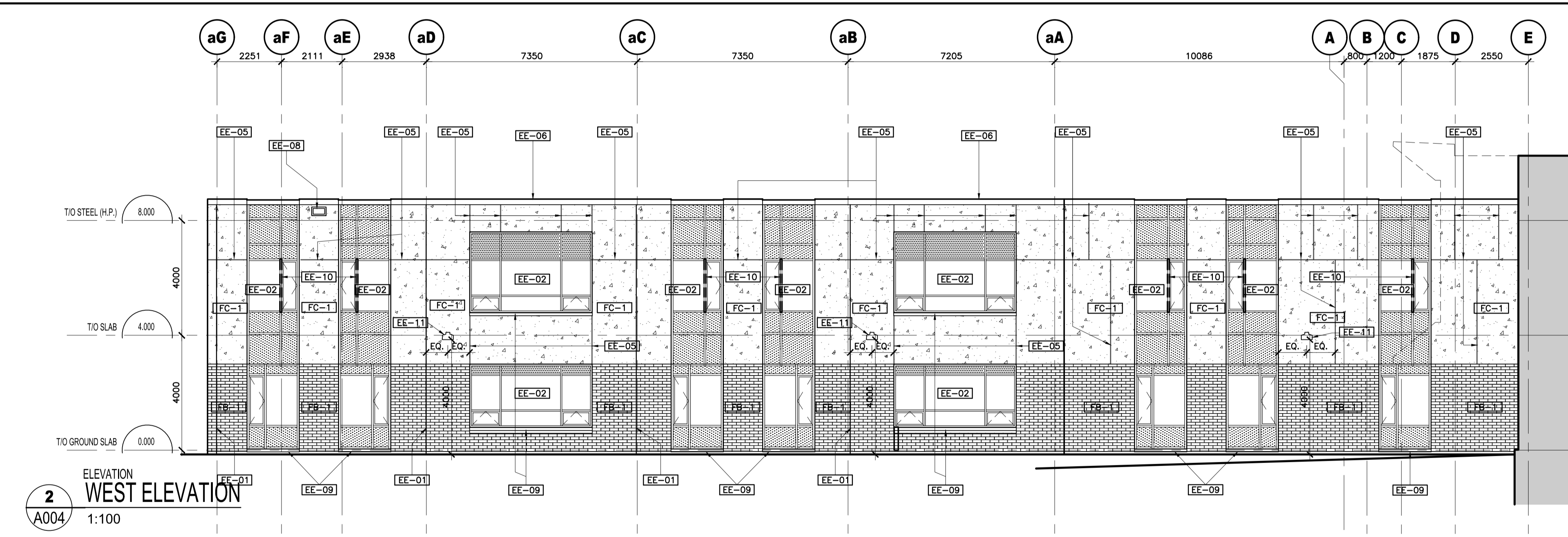
CHECKED BY	DATE
VÉRIFIÉ PAR	J.J.
	JANUARY 2022

A003

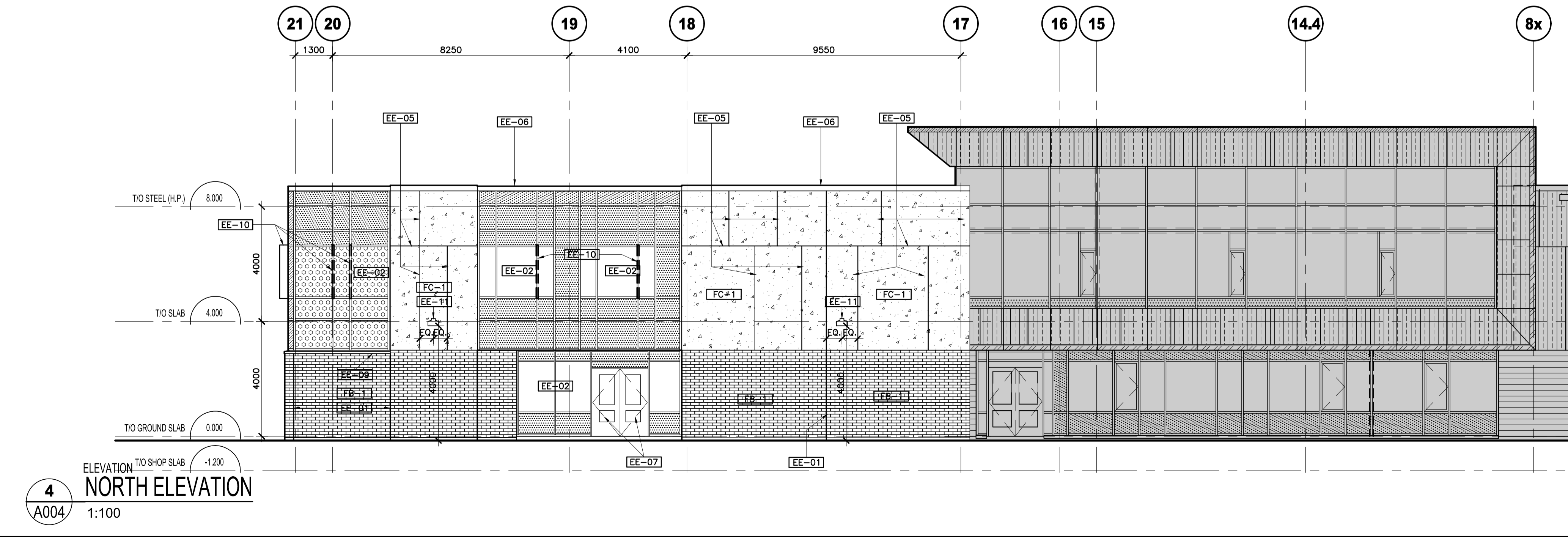
FICHER ACAD FILE: 2219-A003_SPC.dwg



1
A004
ELEVATION EAST ELEVATION
1:100



2
A004
ELEVATION WEST ELEVATION
1:100



4
A004
ELEVATION NORTH ELEVATION
1:100

ELEVATION LEGEND

- INSULATED SPANDREL PANEL GLAZING WITH INSULATED BACK PAN BEHIND IN ALUMINUM CURTAIN WALL
- VISION INSULATED GLASS UNITS IN ALUMINUM CURTAIN WALL
- PRIVACY FILM INSTALLED ON INSIDE FACE OF VISION INSULATED GLASS UNITS
- VISION INSULATED GLASS UNITS WITH CERAMIC FRIT COATED GLASS
- TILT-UP CONCRETE PANEL WITH BRICK VENEER TYPE 1
- TILT-UP CONCRETE PANEL WITH CONCRETE FINISH
- RE-USED EXISTING PHENOLIC PANELS
- TILT-UP PANEL BRICK VENEER TYPE 1
- TILT-UP PANEL CONCRETE FINISH

ELEVATION NOTES

- EE-1 19MM CONTROL JOINT BETWEEN TILT-UP PANELS
- EE-2 CURTAIN WALL SYSTEM, REFER TO WINDOW SCHEDULE
- EE-3 STRUCTURAL CONCRETE WYTHE BEHIND SPANDREL PANEL
- EE-4 RE-USED EXISTING PHENOLIC PANELS
- EE-5 19MM WIDE REVEAL IN TILT-UP CONCRETE PANEL
- EE-6 PRE-FINISHED METAL CAP FLASHING
- EE-7 ALUMINUM SWING DOOR
- EE-8 ROOF OVERFLOW SCUPPER
- EE-9 TYPICAL 2MM BRAKE FORMED ALUMINUM SILL FLASHING
- EE-10 300MM EXTRUDED ALUMINUM EXTENSION CURTAIN WALL CAP. REFER TO SPECIFICATIONS
- EE-11 EXTERIOR WALL MOUNTED LIGHT FIXTURE. REFER TO ELECTRICAL

1	0	2022/11/01	ISSUED FOR SITE PLAN CONTROL
---	---	------------	------------------------------

LES IDÉES, CONCEPTS, DISPOSITIONS ET PLANS MONTRÉS OU REPRÉSENTÉS PAR CE DESSIN APPARTIENNENT À EDWARD J. CUHACI AND ASSOCIATES ARCHITECTS INC. ET ONT ÉTÉ CRÉÉS ET DÉVELOPPÉS POUR ÊTRE UTILISÉS DANS LE CADRE DU PRÉSENT PROJET. ILS NE DOIVENT PAS ÊTRE UTILISÉS À D'AUTRES FINS NI COMMUNIQUÉS À QUI QUE CE SOIT SANS LA PERMISSION ÉCRITE DE EDWARD J. CUHACI AND ASSOCIATES ARCHITECTS INC.

L'ARCHITECTE DÉCLINE TOUTE RESPONSABILITÉ DÉCOULANT DE PROBLÈMES FAISANT SUITE AU NON-RESPECT DES PLANS ET DEVIS OU DE L'INTENTION DU CONCEPT QU'ILS TRANSMETTENT OU DE TOUTS PROBLÈMES POUVANT RÉSULTER DU DÉFAUT DE TIERS D'OBTENIR OU DE SUIVRE LES INSTRUCTIONS DE L'ARCHITECTE RELATIVEMENT AUX ERREURS, OMISSIONS, INCOHÉRENCES, AMBIGUITÉS OU CONTRADICTIONS ALLÉGUÉES.

L'ENTREPRENEUR DOIT VÉRIFIER TOUTES LES DIMENSIONS SUR PLACE ET INFORMER L'ARCHITECTE DE TOUT ÉCART AVANT LE DÉBUT DES TRAVAUX. NE PAS MESURER LES DESSINS À L'ÉCHELLE.

ALL IDEAS, DESIGNS, ARRANGEMENTS, AND PLANS INDICATED OR REPRESENTED BY THIS DRAWING ARE OWNED BY AND THE PROPERTY OF EDWARD J. CUHACI AND ASSOCIATES INC. AND WERE CREATED, EVOLVED, AND DEVELOPED FOR USE ON AND IN CONNECTION WITH THE SPECIFIED PROJECT. NONE OF THE IDEAS, DESIGNS, ARRANGEMENTS OR PLANS SHALL BE USED BY OR DISCLOSED TO ANY PERSON, FIRM, OR CORPORATION FOR ANY PURPOSE WHATSOEVER WITHOUT THE WRITTEN PERMISSION OF EDWARD J. CUHACI AND ASSOCIATES INC.

THE ARCHITECT WAIVES ANY AND ALL RESPONSIBILITY AND LIABILITY FOR PROBLEMS WHICH ARISE FROM FAILURE TO FOLLOW THESE PLANS, SPECIFICATIONS, AND THE DESIGN INTENT THEY CONVEY, OR FOR PROBLEMS WHICH ARISE FROM OTHERS' FAILURE TO OBTAIN AND/OR FOLLOW THE ARCHITECT'S GUIDANCE WITH RESPECT TO ANY ERRORS, OMISSIONS, INCONSISTENCIES, AMBIGUITIES OR CONFLICTS WHICH ARE ALLEGED.

CONTRACTOR TO VERIFY ALL DIMENSIONS AND NOTIFY THE ARCHITECT OF ANY DISCREPANCIES BEFORE WORK COMMENCES. DO NOT SCALE DRAWINGS



EDWARD J. CUHACI & ASSOCIATES ARCHITECTS Inc.
171 Slater St. Suite 100, Ottawa, Ontario, K1P 5H7
Fax: (613) 236-1944 Telephone: (613) 236-7155 E-mail: info@ejcuhaci.com

PROJECT TITLE/TITRE DU PROJET
ÉCOLE SECONDAIRE CATHOLIQUE PAUL-DESMARIS - ADDITION
5315 ABBOTT STREET EAST
OTTAWA, ON

CONSEIL DES ÉCOLES CATHOLIQUES DU CENTRE-EST
4000, RUE LABELLE, OTTAWA, ON K1J 1A1

DRAWING TITLE/TITRE DU DESSIN
ELEVATIONS

SCALE ÉCHELLE	1:500	PROJ. No	2219	ISSUE No	1	REV. No	0
DRAWN BY DESSINÉ PAR	S.J.	DRAWING/DESSIN					A004
CHECKED BY VÉRIFIÉ PAR	J.J.						
DATE	JANUARY 2022	FICHER ACAD FILE: 2219-A004_SPC.dwg					