

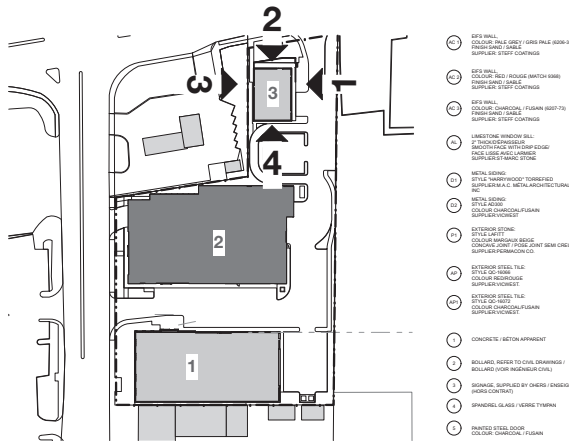
Attamlin

TACT

ALLISON HAMLIN  
 MANAGER (A), DEVELOPMENT REVIEW WEST  
 PLANNING, REAL ESTATE & ECONOMIC DEVELOPMENT  
 DEPARTMENT, CITY OF OTTAWA

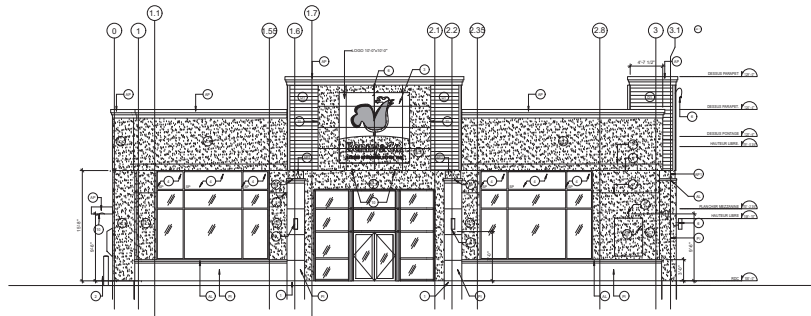
DATE: 2022-10-05  
 BY: Allison Hamlin  
 CHECKED BY: [blank]  
 APPROVED BY: [blank]  
 PROJECT: 1811-08  
 SHEET: 1811-08-01

**APPROVED**  
 By Allison Hamlin at 9:47 am, Oct 05, 2022

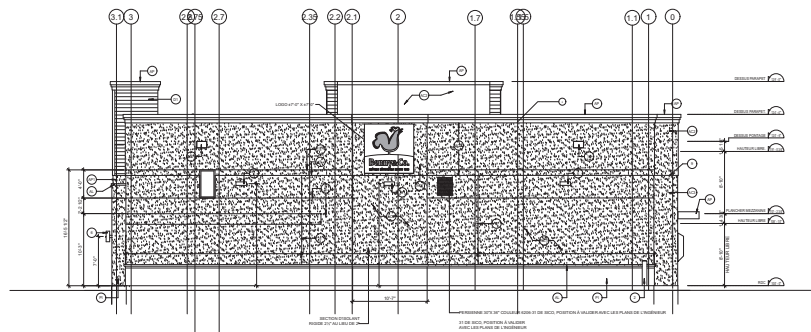


- 1. EXTERIOR LIGHTS, SEE ELECTRICAL / DÉTAILS DE LUMIÈRE (VOIR ÉLECTRIQUE / ÉLECTRIQUE)
- 2. EXTERIOR LIGHTS, SEE ELECTRICAL / DÉTAILS DE LUMIÈRE (VOIR ÉLECTRIQUE / ÉLECTRIQUE)
- 3. 1/4" GROOVE IN STUCCO FINISH-FRAMELESS ON ALUMINUM FRAME WITH 1/2" CLEARANCE TO THE OUTSIDE AND 1/2" TO THE INSIDE TO PREVENT WATER INTRUSION
- 4. 1/4" GROOVE IN STUCCO FINISH-FRAMELESS ON ALUMINUM FRAME WITH 1/2" CLEARANCE TO THE OUTSIDE AND 1/2" TO THE INSIDE TO PREVENT WATER INTRUSION
- 5. 1/4" GROOVE IN STUCCO FINISH-FRAMELESS ON ALUMINUM FRAME WITH 1/2" CLEARANCE TO THE OUTSIDE AND 1/2" TO THE INSIDE TO PREVENT WATER INTRUSION
- 6. RECESSED EXTERIOR LIGHT WITH BLACK FINISH AND 1/2" CLEARANCE TO THE OUTSIDE AND 1/2" TO THE INSIDE TO PREVENT WATER INTRUSION
- 7. 1/4" GROOVE IN STUCCO FINISH-FRAMELESS ON ALUMINUM FRAME WITH 1/2" CLEARANCE TO THE OUTSIDE AND 1/2" TO THE INSIDE TO PREVENT WATER INTRUSION
- 8. 1/4" GROOVE IN STUCCO FINISH-FRAMELESS ON ALUMINUM FRAME WITH 1/2" CLEARANCE TO THE OUTSIDE AND 1/2" TO THE INSIDE TO PREVENT WATER INTRUSION
- 9. 1/4" GROOVE IN STUCCO FINISH-FRAMELESS ON ALUMINUM FRAME WITH 1/2" CLEARANCE TO THE OUTSIDE AND 1/2" TO THE INSIDE TO PREVENT WATER INTRUSION
- 10. RECESSED EXTERIOR LIGHT WITH BLACK FINISH AND 1/2" CLEARANCE TO THE OUTSIDE AND 1/2" TO THE INSIDE TO PREVENT WATER INTRUSION
- 11. 1/4" GROOVE IN STUCCO FINISH-FRAMELESS ON ALUMINUM FRAME WITH 1/2" CLEARANCE TO THE OUTSIDE AND 1/2" TO THE INSIDE TO PREVENT WATER INTRUSION
- 12. 1/4" GROOVE IN STUCCO FINISH-FRAMELESS ON ALUMINUM FRAME WITH 1/2" CLEARANCE TO THE OUTSIDE AND 1/2" TO THE INSIDE TO PREVENT WATER INTRUSION
- 13. 1/4" GROOVE IN STUCCO FINISH-FRAMELESS ON ALUMINUM FRAME WITH 1/2" CLEARANCE TO THE OUTSIDE AND 1/2" TO THE INSIDE TO PREVENT WATER INTRUSION
- 14. 1/4" GROOVE IN STUCCO FINISH-FRAMELESS ON ALUMINUM FRAME WITH 1/2" CLEARANCE TO THE OUTSIDE AND 1/2" TO THE INSIDE TO PREVENT WATER INTRUSION
- 15. 1/4" GROOVE IN STUCCO FINISH-FRAMELESS ON ALUMINUM FRAME WITH 1/2" CLEARANCE TO THE OUTSIDE AND 1/2" TO THE INSIDE TO PREVENT WATER INTRUSION
- 16. 1/4" GROOVE IN STUCCO FINISH-FRAMELESS ON ALUMINUM FRAME WITH 1/2" CLEARANCE TO THE OUTSIDE AND 1/2" TO THE INSIDE TO PREVENT WATER INTRUSION
- 17. 1/4" GROOVE IN STUCCO FINISH-FRAMELESS ON ALUMINUM FRAME WITH 1/2" CLEARANCE TO THE OUTSIDE AND 1/2" TO THE INSIDE TO PREVENT WATER INTRUSION
- 18. 1/4" GROOVE IN STUCCO FINISH-FRAMELESS ON ALUMINUM FRAME WITH 1/2" CLEARANCE TO THE OUTSIDE AND 1/2" TO THE INSIDE TO PREVENT WATER INTRUSION
- 19. 1/4" GROOVE IN STUCCO FINISH-FRAMELESS ON ALUMINUM FRAME WITH 1/2" CLEARANCE TO THE OUTSIDE AND 1/2" TO THE INSIDE TO PREVENT WATER INTRUSION
- 20. 1/4" GROOVE IN STUCCO FINISH-FRAMELESS ON ALUMINUM FRAME WITH 1/2" CLEARANCE TO THE OUTSIDE AND 1/2" TO THE INSIDE TO PREVENT WATER INTRUSION
- 21. 1/4" GROOVE IN STUCCO FINISH-FRAMELESS ON ALUMINUM FRAME WITH 1/2" CLEARANCE TO THE OUTSIDE AND 1/2" TO THE INSIDE TO PREVENT WATER INTRUSION
- 22. 1/4" GROOVE IN STUCCO FINISH-FRAMELESS ON ALUMINUM FRAME WITH 1/2" CLEARANCE TO THE OUTSIDE AND 1/2" TO THE INSIDE TO PREVENT WATER INTRUSION
- 23. 1/4" GROOVE IN STUCCO FINISH-FRAMELESS ON ALUMINUM FRAME WITH 1/2" CLEARANCE TO THE OUTSIDE AND 1/2" TO THE INSIDE TO PREVENT WATER INTRUSION
- 24. 1/4" GROOVE IN STUCCO FINISH-FRAMELESS ON ALUMINUM FRAME WITH 1/2" CLEARANCE TO THE OUTSIDE AND 1/2" TO THE INSIDE TO PREVENT WATER INTRUSION
- 25. 1/4" GROOVE IN STUCCO FINISH-FRAMELESS ON ALUMINUM FRAME WITH 1/2" CLEARANCE TO THE OUTSIDE AND 1/2" TO THE INSIDE TO PREVENT WATER INTRUSION
- 26. 1/4" GROOVE IN STUCCO FINISH-FRAMELESS ON ALUMINUM FRAME WITH 1/2" CLEARANCE TO THE OUTSIDE AND 1/2" TO THE INSIDE TO PREVENT WATER INTRUSION
- 27. 1/4" GROOVE IN STUCCO FINISH-FRAMELESS ON ALUMINUM FRAME WITH 1/2" CLEARANCE TO THE OUTSIDE AND 1/2" TO THE INSIDE TO PREVENT WATER INTRUSION
- 28. 1/4" GROOVE IN STUCCO FINISH-FRAMELESS ON ALUMINUM FRAME WITH 1/2" CLEARANCE TO THE OUTSIDE AND 1/2" TO THE INSIDE TO PREVENT WATER INTRUSION
- 29. 1/4" GROOVE IN STUCCO FINISH-FRAMELESS ON ALUMINUM FRAME WITH 1/2" CLEARANCE TO THE OUTSIDE AND 1/2" TO THE INSIDE TO PREVENT WATER INTRUSION
- 30. 1/4" GROOVE IN STUCCO FINISH-FRAMELESS ON ALUMINUM FRAME WITH 1/2" CLEARANCE TO THE OUTSIDE AND 1/2" TO THE INSIDE TO PREVENT WATER INTRUSION

**BENNY & CO. RESTAURANT ELEVATIONS - BUILDING 3**



1 EAST ELEVATION - RESTAURANT  
 SCALE: 1/8"=1'-0"



3 WEST ELEVATION - RESTAURANT  
 SCALE: 1/8"=1'-0"



2 NORTH ELEVATION - RESTAURANT  
 SCALE: 1/8"=1'-0"



4 SOUTH ELEVATION - RESTAURANT  
 SCALE: 1/8"=1'-0"



Note: Building permit issuance shall be subject to the building permit drawings not being in contradiction with these approved plans and drawings including, but not limited to, the exterior design of the building and exterior building materials.

Note: This drawing and all copyright therein are the sole and exclusive property of TACT Design Inc. Reproduction or use of this drawing in whole or in part by any means or in any way whatsoever without the prior written consent of TACT Design is strictly prohibited. Do not scale this drawing. Published Tuesday, December 7, 2021. File: 1811-08\_Cityde v\_27\_1\_BPA\_PlanSheets.dwg

TACT Architecture Inc.  
 1811-08  
 1811-08-01  
 1811-08-01

Architect of Record  
 TACT Architecture Inc.  
 1811-08-01  
 1811-08-01  
 1811-08-01

Client  
 Dymon Capital Corporation  
 1811-08-01  
 1811-08-01  
 1811-08-01

Site Elevations - Building 3  
 RD, JL, FT, ST, NS  
 Tuesday, December 7, 2021  
 1811-07